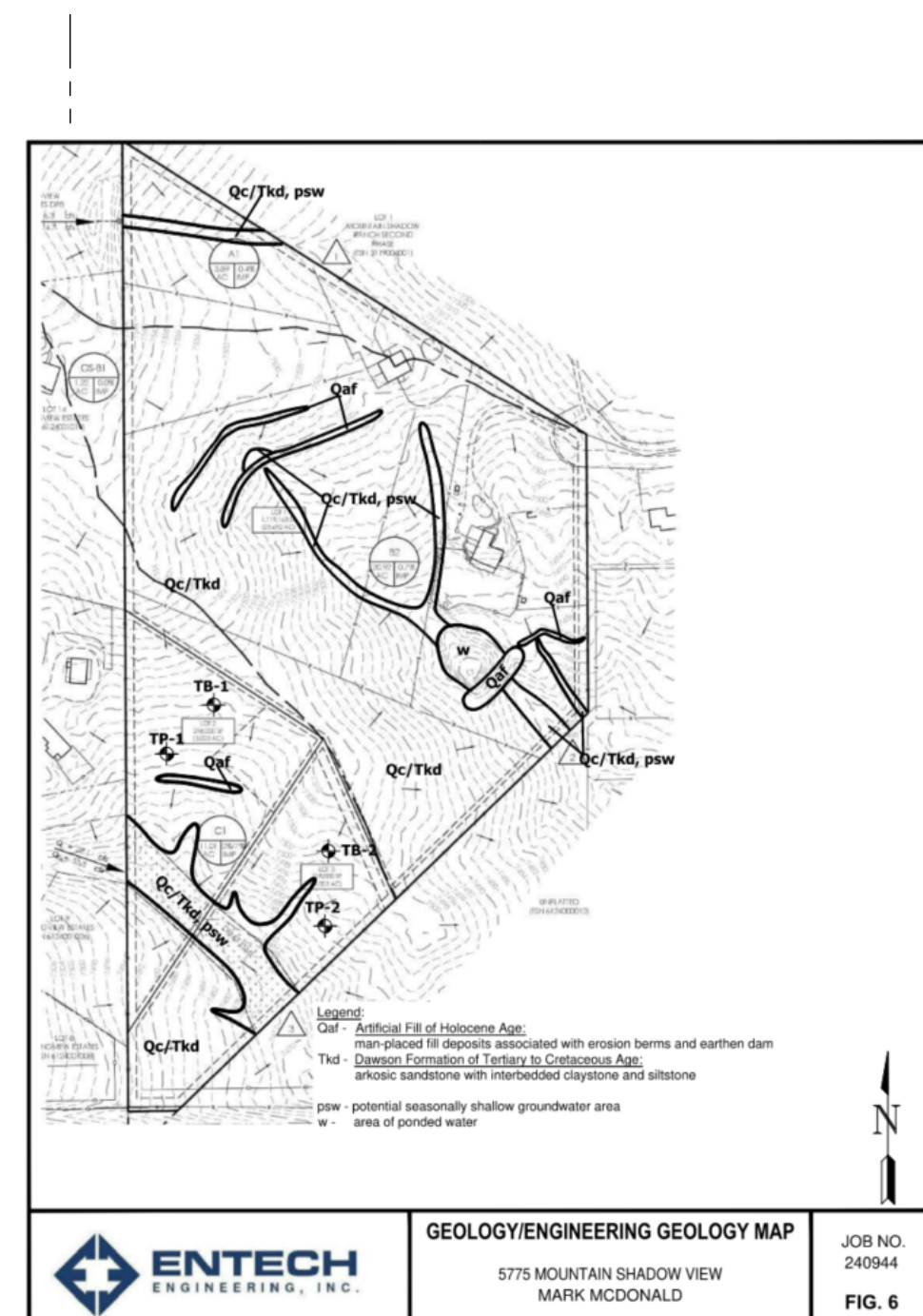


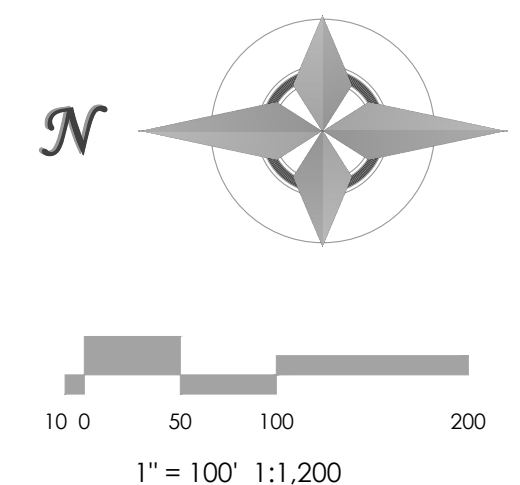
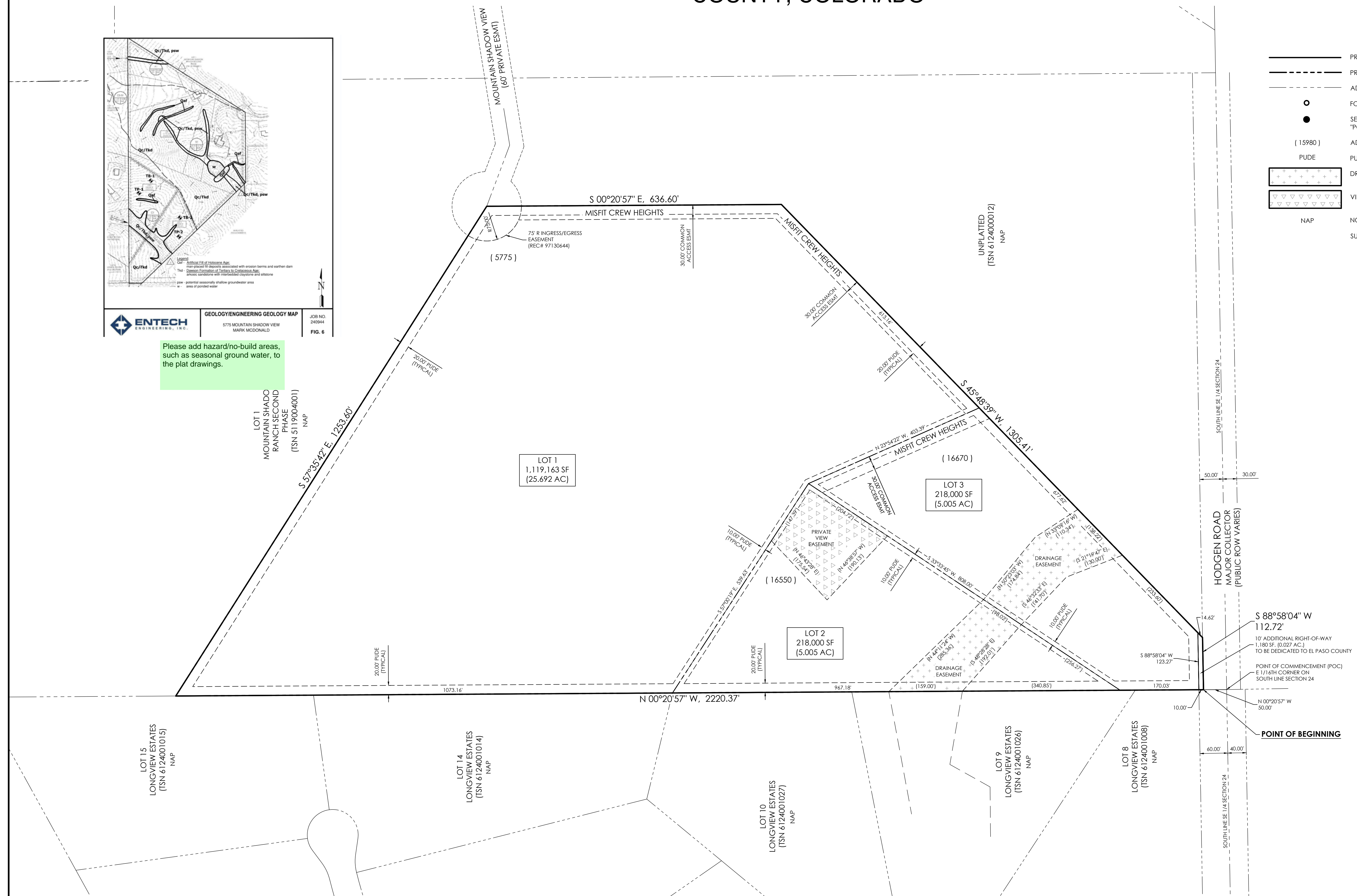
MISFIT CREW ESTATES

A TRACT OF LAND LOCATED IN THE EAST HALF OF THE SOUTHEAST QUARTER QUARTER OF SECTION 24, TOWNSHIP 11 SOUTH, RANGE 66 WEST of the 6th PRINCIPAL MERIDIAN, EL PASO COUNTY, COLORADO



Please add hazard/no-build areas, such as seasonal ground water, to the plat drawings.

- LEGEND**
- PROPOSED SUBDIVISION BOUNDARY LINE
 - PROPOSED LOT LINE
 - ADJACENT BOUNDARIES
 - FOUND CORNER AS SHOWN
 - SET #5 REBAR W/ ALUMINUM CAP MARKED "POLARIS, PLS 27605" FLUSH WITH THE GROUND
 - (15980) ADDRESS NUMBER
 - PUDE PUBLIC UTILITY AND DRAINAGE EASEMENT
 - DRAINAGE EASEMENT WITH NO BUILD AND NO STORAGE OF MATERIALS
 - VIEW EASEMENT
 - NAP NOT A PART OF THIS SUBDIVISION (NO AREAS OUTSIDE OF THE SHOWN BOUNDARY ARE A PART OF THIS SUBDIVISION)



MINOR SUBDIVISION PLAT
 MISFIT CREW ESTATES

MVE, INC.
ENGINEERS SURVEYORS

MVE PROJECT: 61160
 MVE DRAWING: 61160-PLAT-PS1
 DATE: OCTOBER 16, 2024
 SHEET: 2 OF 2

1903 LeBarry Street, Suite 300
 Colorado Springs, CO 80909
 719.635.5736 www.mvecivil.com