

Approver, Please note, the span is greater than 3'-0". Thus, the bearing bars have to run the incorrect direction. Please Verify this is acceptable.

BILL OF MATERIALS

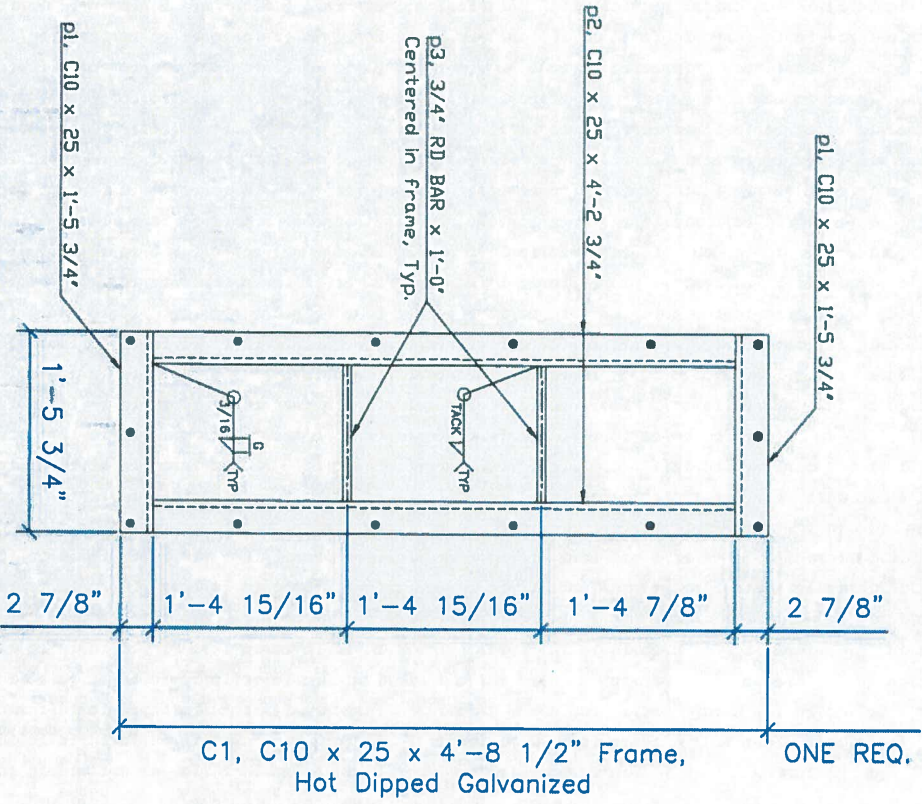
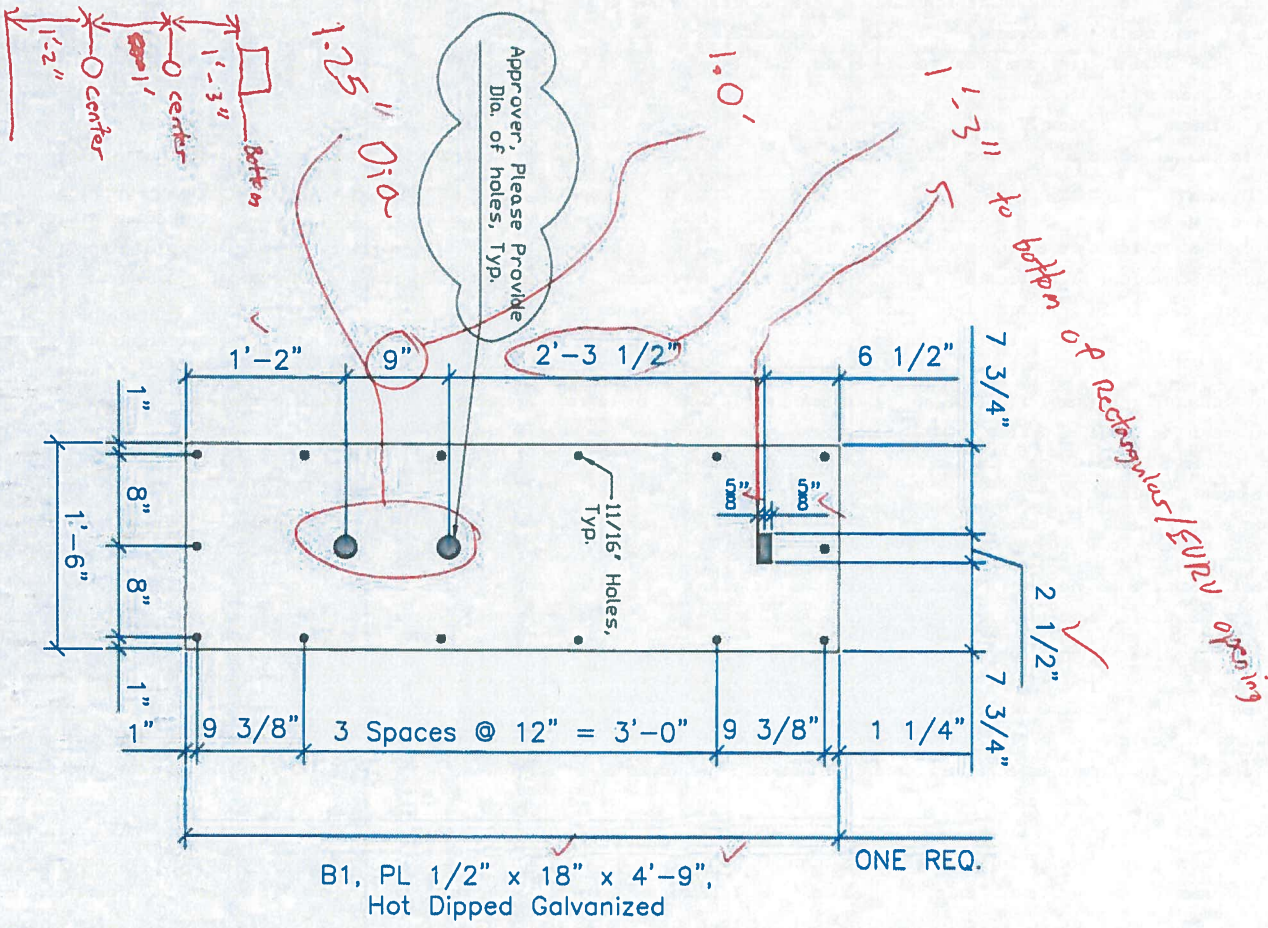
MK.	PAK/QTY.	MATERIAL	FT.	INCHES	WEIGHT
A1	1	PL 1/4" x 15"	2'	0"	25.5' ed
B1	1	PL 1/2" x 18"	4'	9"	145.4' ed
C1	1	C10 x 25 x 1'-5 3/4" Frame	4'	8 1/2"	288.4' ed
P1	2	C10 x 25	1'	5 3/4"	36.98' ed
P2	2	C10 x 25	4'	2 3/4"	105.73' ed
P3	2	3/4" RD BAR	1'	0"	1.50' ed
D1	1	Johnson NO. 93 x 1'-6"	5'	10"	???
E1	3	McNichols 6602141332	3'	5 1/2"	113.40' ed

- NO EXCEPTION TAKEN TO ITEM(S) SUBMITTED
- MAKE CORRECTIONS NOTED
- REVISE AND RESUBMIT
- REJECTED
- SUBMIT SPECIFIED ITEM(S)

Checking is only for general conformance with the design concept of the project and general compliance with the information given in the Contract Documents. Any Action shown is subject to the requirements of the plans and specifications. Contractor is responsible for dimensions which shall be confirmed and correlated at the job site, fabrication processes and techniques of construction coordinate of contractors work with that of all other trades and the satisfactory performance of their work.

JR ENGINEERING, LLC

By *[Signature]* Date 1/28/2021



PRINTING

FOR APPROVAL JAN 21 2021

FOR CONSTRUCTION

CONTRACTOR DE Steel, Inc. (719) 573-7887

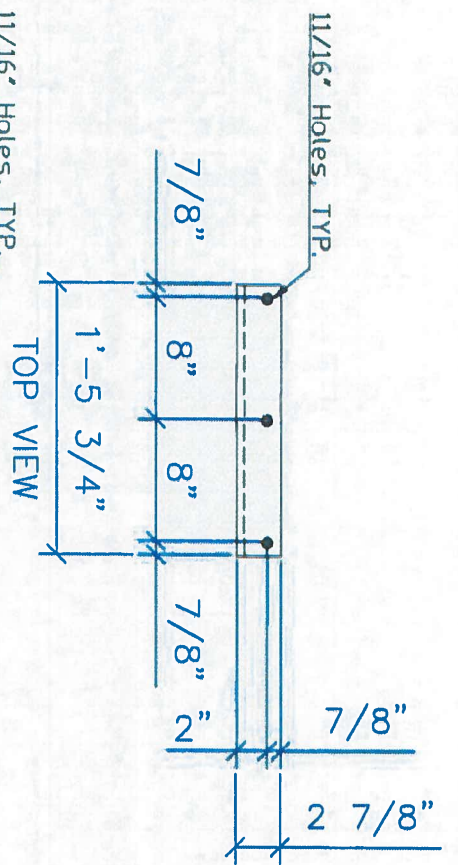
PPC

Colorado Springs, CO

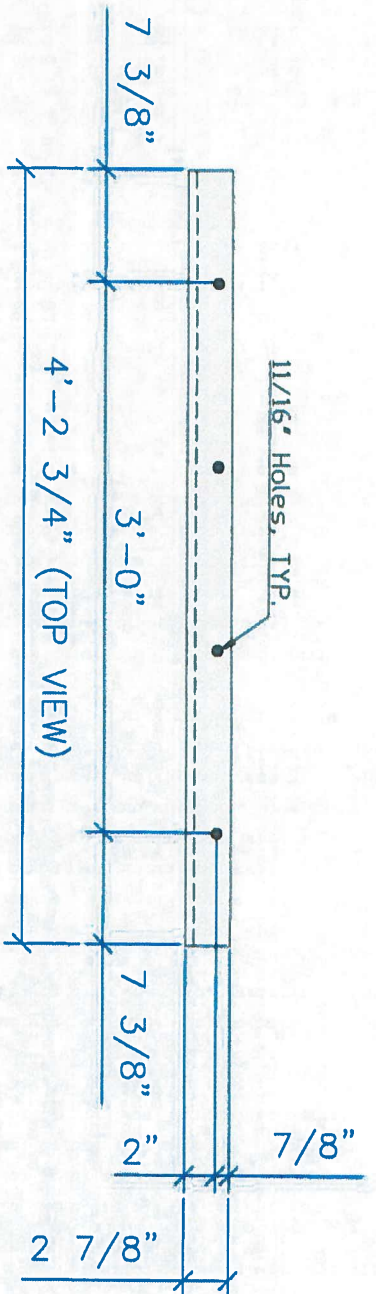
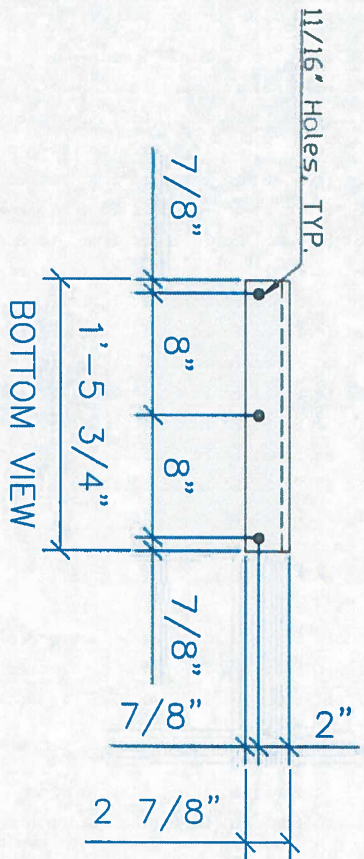
LOCATION Tamlin RD., RV Storage / McDonalds Storage

STRUCTURE Pond A Outlet Structure

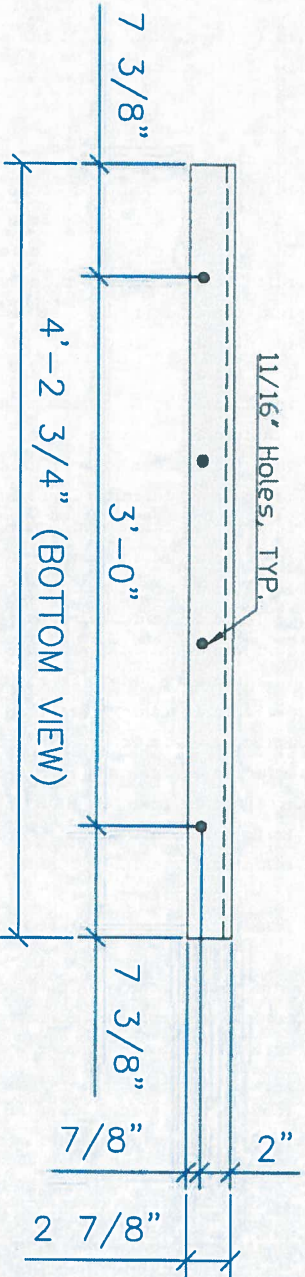
TITLE



p1, C10 x 25, TWO REQ.



p2, C10 x 25 x 4'-2 3/4", TWO REQ.



BILL OF MATERIALS

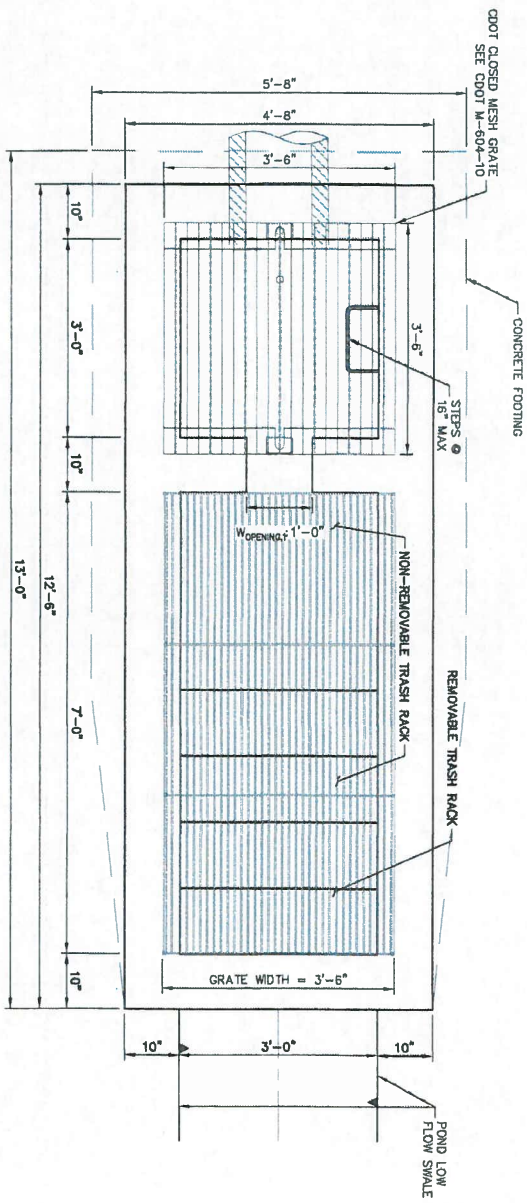
MK.	P.MK	QTY.	MATERIAL	FT.	INCHES	WEIGHT
p1		2	C10 x 25	1'	5 3/4"	36.98 ec
p2		2	C10 x 25	4'	2 3/4"	105.73 ec
p3		2	3/4" RD BAR	1'	0"	01.50 ec

HOLE DIA. = 7/16" U.O.N.
PAINT = NP
FIELD BOLTS
SEE ALL FAB SHEETS

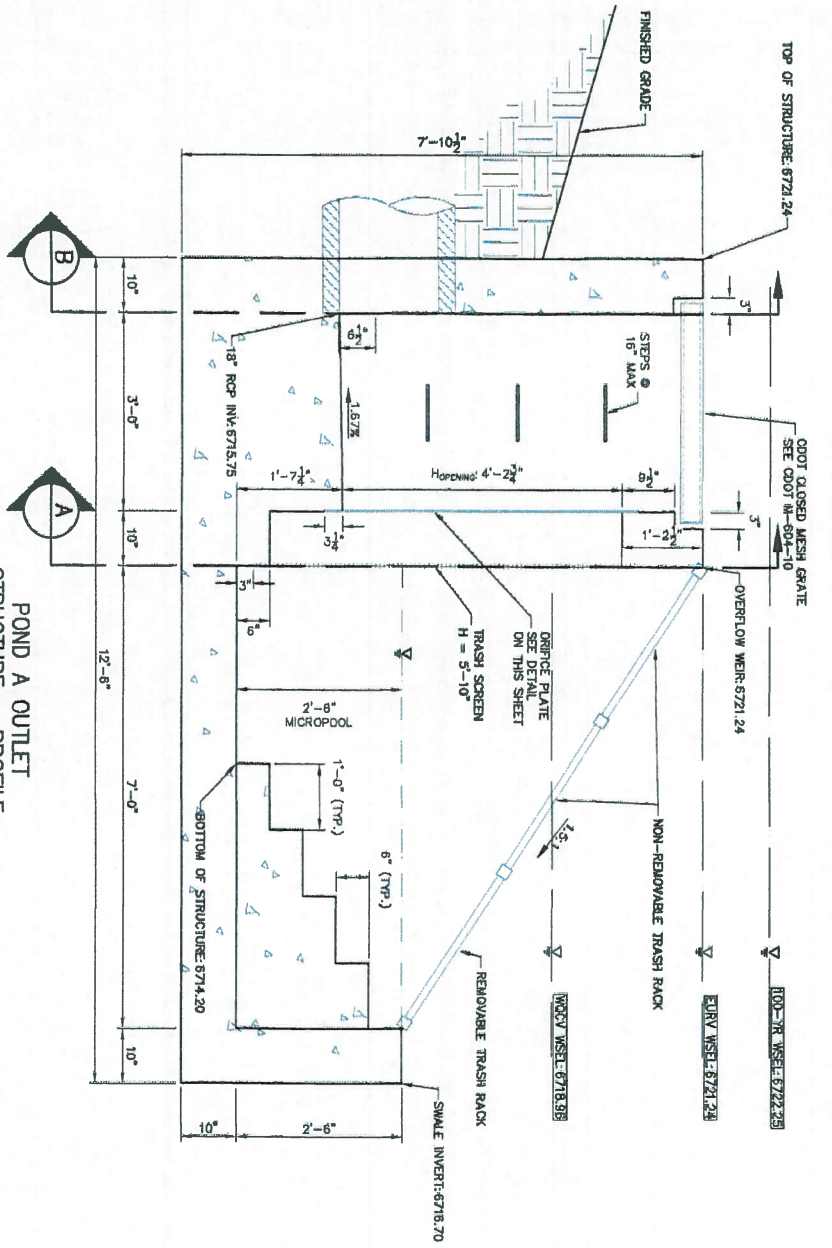
PRINTING
FOR APPROVAL
FOR CONSTRUCTION
JAN 21 2021
CONTRACTOR
DE Steel, Inc. (719) 573-7887

CONTRACTOR	PPC
LOCATION	Colorado Springs, CO.
STRUCTURE	Tamlin RD. RV Storage / McDonalds Storage
TITLE	Pond A Outlet Structure

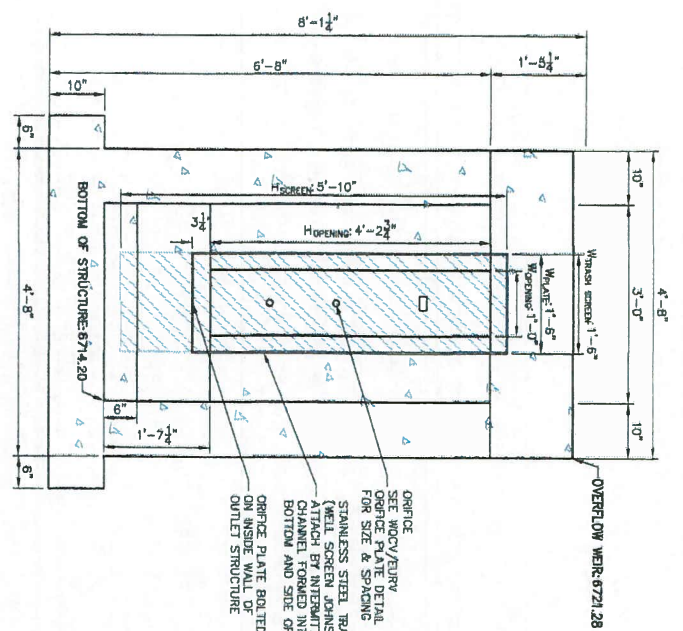
POND A OUTLET
STRUCTURE - PLAN



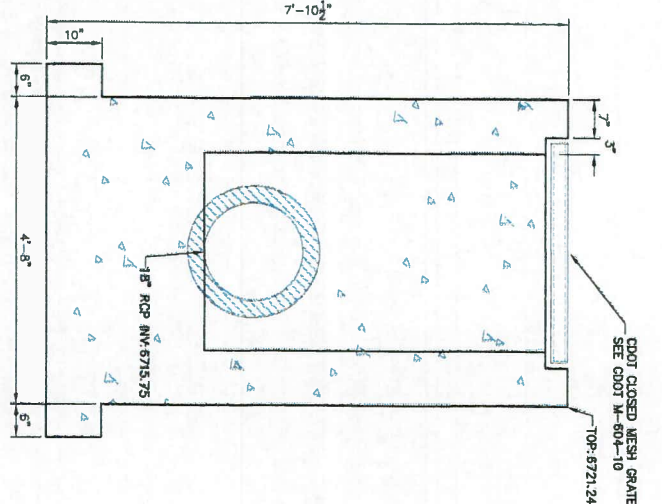
POND A OUTLET
STRUCTURE - PROFILE



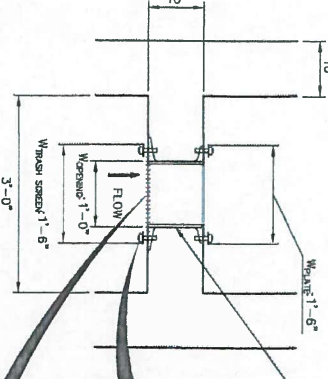
A SECTION A AT ORIFICE (FRONT) WALL



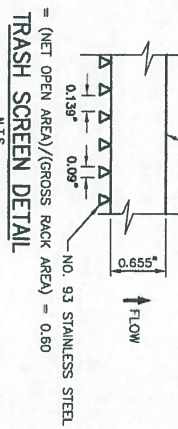
B SECTION B AT OUTLET (REAR) WALL



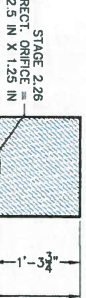
TRASH SCREEN AND WOCV PLATE
DETAIL (PLAN)



TRASH SCREEN DETAIL



4\" x 1\" THICK FLOW GALVANIZED STEEL, FLOW CONTROL PLATE, PROVIDE CONTINUOUS NEOPRENE GASKET MATERIAL BETWEEN THE ORIFICE PLATE AND 12\" FROM PLATE EDGE TO CONCRETE @ 12\" MAX O.C.



WOCV/EURY ORIFICE
PLATE DETAIL

SCALE: 3/4\" = 1\"

ENGINEER'S STATEMENT
PREPARED UNDER MY DIRECT SUPERVISION AND ON BEHALF OF JR ENGINEERING
MICHAEL A. BRAMLETT, P.E.
COLORADO P.E. 32314
FOR AND ON BEHALF OF JR ENGINEERING

TAMLIN ROAD RV STORAGE POND A OUTLET STRUCTURE	H-SCALE	3/4\" = 1\"
	V-SCALE	3/4\" = 1\"
	DATE	07/14/20
	DESIGNED BY	NQJ
	DRAWN BY	NQJ
	CHECKED BY	

SHEET 6 OF 10
JOB NO. 25134.00



Centennial 303-740-0386 • Colorado Springs 719-593-2583
Fort Collins 970-491-9888 • www.jrengineering.com

PREPARED FOR
C&M PROPERTIES, LLC
12748 BAROSSA VALLEY ROAD
COLORADO SPRINGS, CO 80921
EDWARD MCDONALD
719-210-9480

UNTIL SUCH TIME AS THESE DRAWINGS ARE APPROVED BY THE APPROPRIATE REVIEWING AGENCIES, JR ENGINEERING APPROVES THEIR USE ONLY FOR THE PURPOSES DESIGNATED BY WRITTEN AUTHORIZATION.