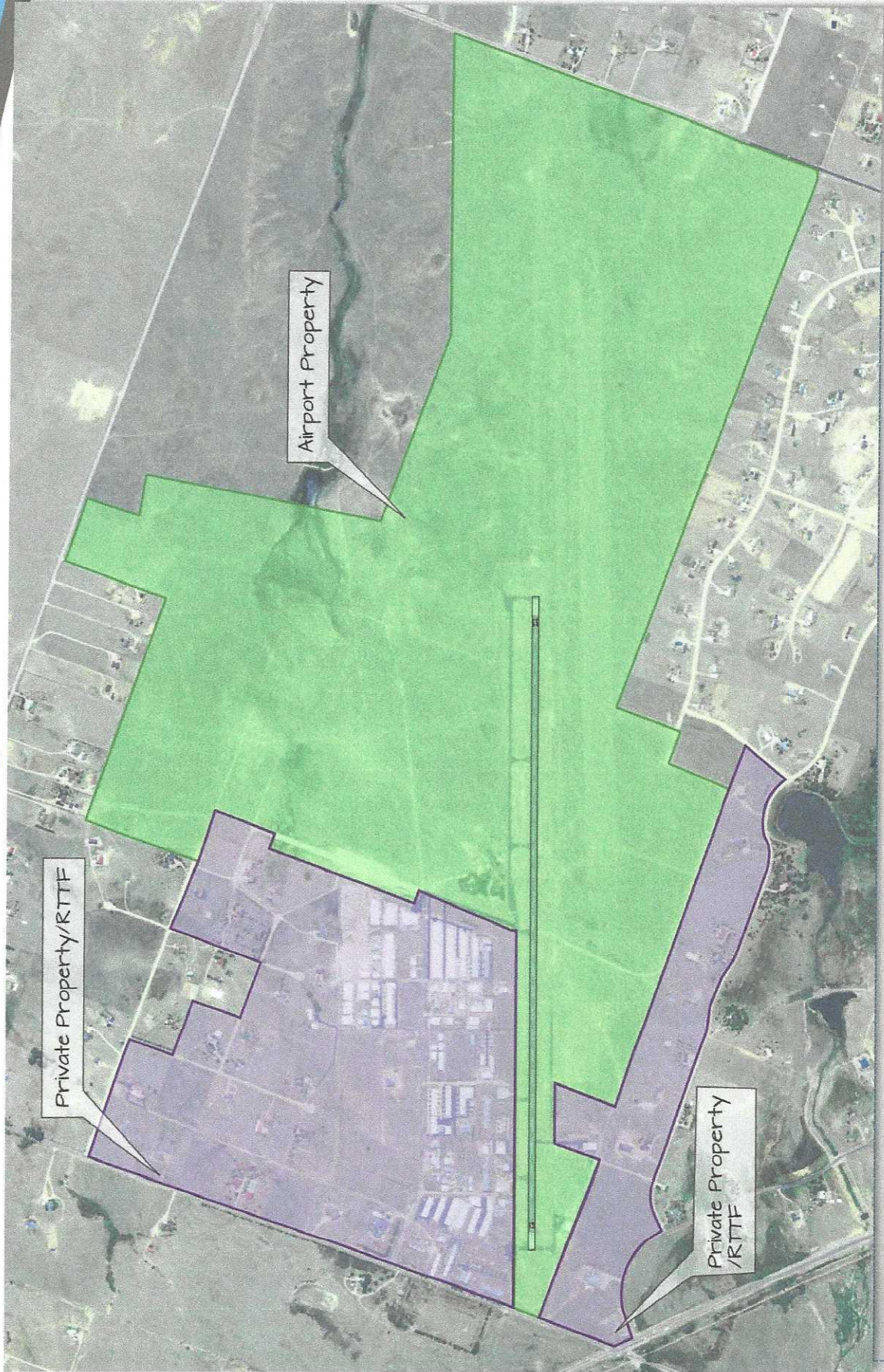


MEADOW LAKE AIRPORT

Property Boundary

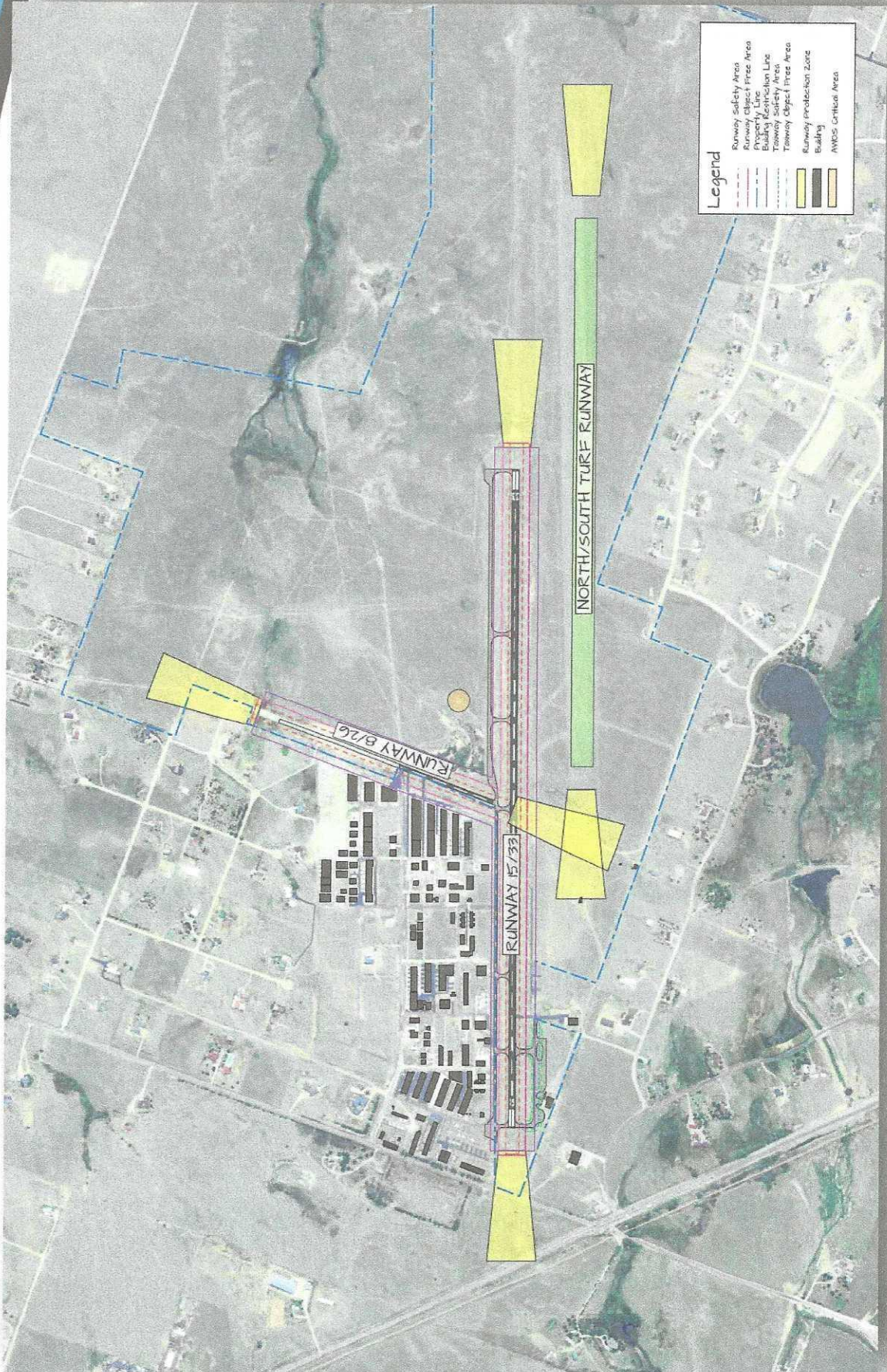


AVIATION

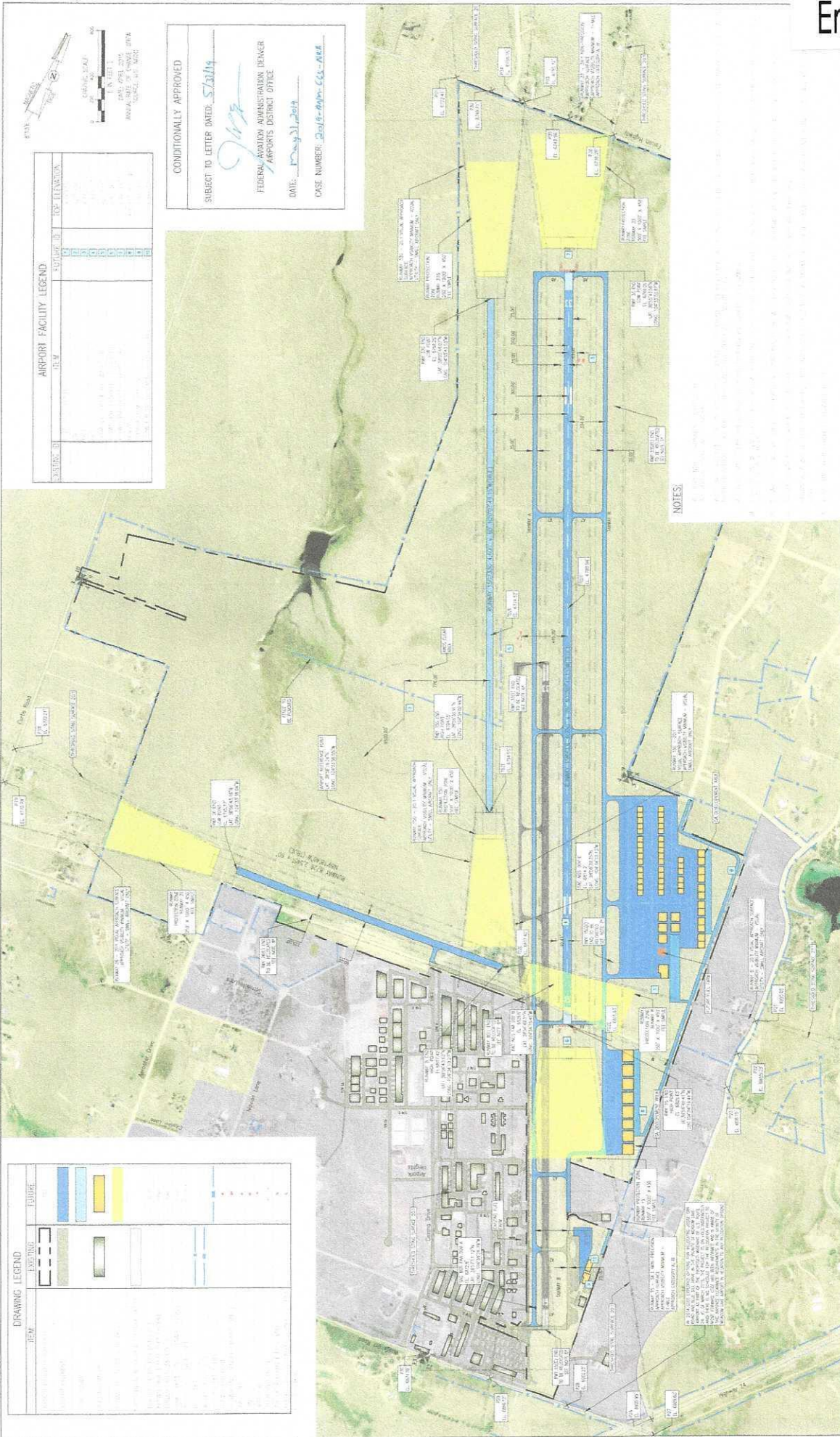
Note: Private Property Not Included in Airport Facility Requirements or Alternatives

MEADOW LAKE AIRPORT

Existing Airport Facilities



AVIATION



AIRPORT FACILITY LEGEND

SYMBOL	DESCRIPTION
[Symbol]	Runway
[Symbol]	Taxiway
[Symbol]	Gravel Surface
[Symbol]	Asphalt Pavement
[Symbol]	Concrete Surface
[Symbol]	Grass
[Symbol]	Water
[Symbol]	Other

CONDITIONALLY APPROVED

SUBJECT TO LETTER DATED 5/31/14

[Signature]

FEDERAL AVIATION ADMINISTRATION DEAGER
AIRPORTS DISTRICT OFFICE

DATE: 12/11/14

CASE NUMBER: 2014-FLY-01-01-01-01-01

NOTES

1. THIS PLAN IS A PRELIMINARY PLAN AND IS SUBJECT TO CHANGE WITHOUT NOTICE.

2. THE USER OF THIS PLAN SHALL BE RESPONSIBLE FOR OBTAINING ALL NECESSARY PERMITS AND APPROVALS FROM THE APPROPRIATE AGENCIES.

3. THE USER OF THIS PLAN SHALL BE RESPONSIBLE FOR OBTAINING ALL NECESSARY PERMITS AND APPROVALS FROM THE APPROPRIATE AGENCIES.

4. THE USER OF THIS PLAN SHALL BE RESPONSIBLE FOR OBTAINING ALL NECESSARY PERMITS AND APPROVALS FROM THE APPROPRIATE AGENCIES.

DRAWING LEGEND

ITEM	EXISTING	FUTURE
Runway	[Symbol]	[Symbol]
Taxiway	[Symbol]	[Symbol]
Gravel Surface	[Symbol]	[Symbol]
Asphalt Pavement	[Symbol]	[Symbol]
Concrete Surface	[Symbol]	[Symbol]
Grass	[Symbol]	[Symbol]
Water	[Symbol]	[Symbol]
Other	[Symbol]	[Symbol]

ISSUE RECORD

NO.	BY	DATE	DESCRIPTION



AVIATION

AIRPORT LAYOUT PLAN - FUTURE

DESIG. NO.	2014-FLY-01
DATE	MAY 2019
ISSUE NO.	04

AIRPORT LAYOUT PLAN

Meadow Lake Airport Influence Area

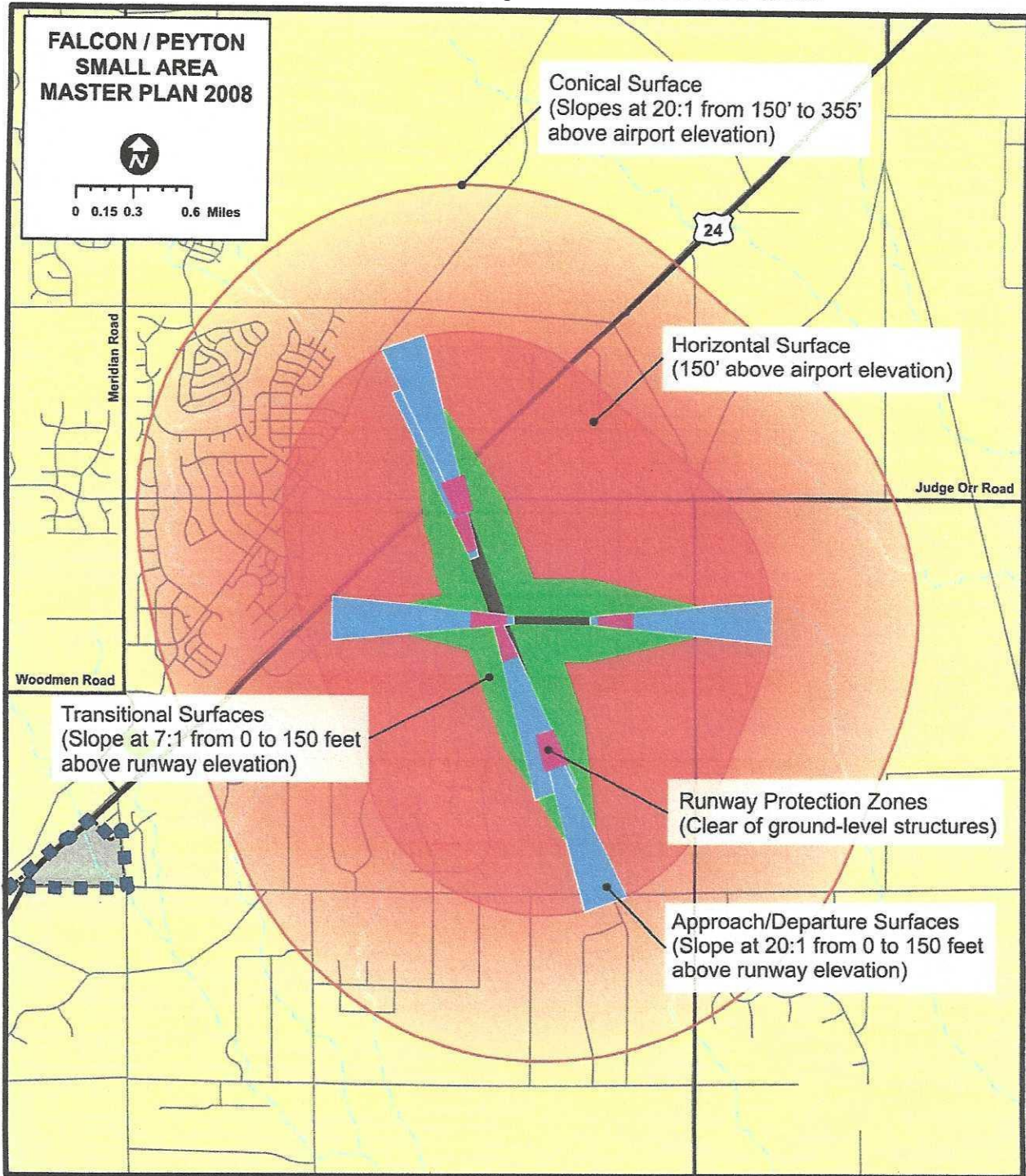
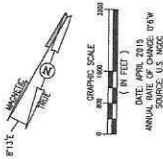


Figure 2-22 - Meadow Lake Airport Influence Area

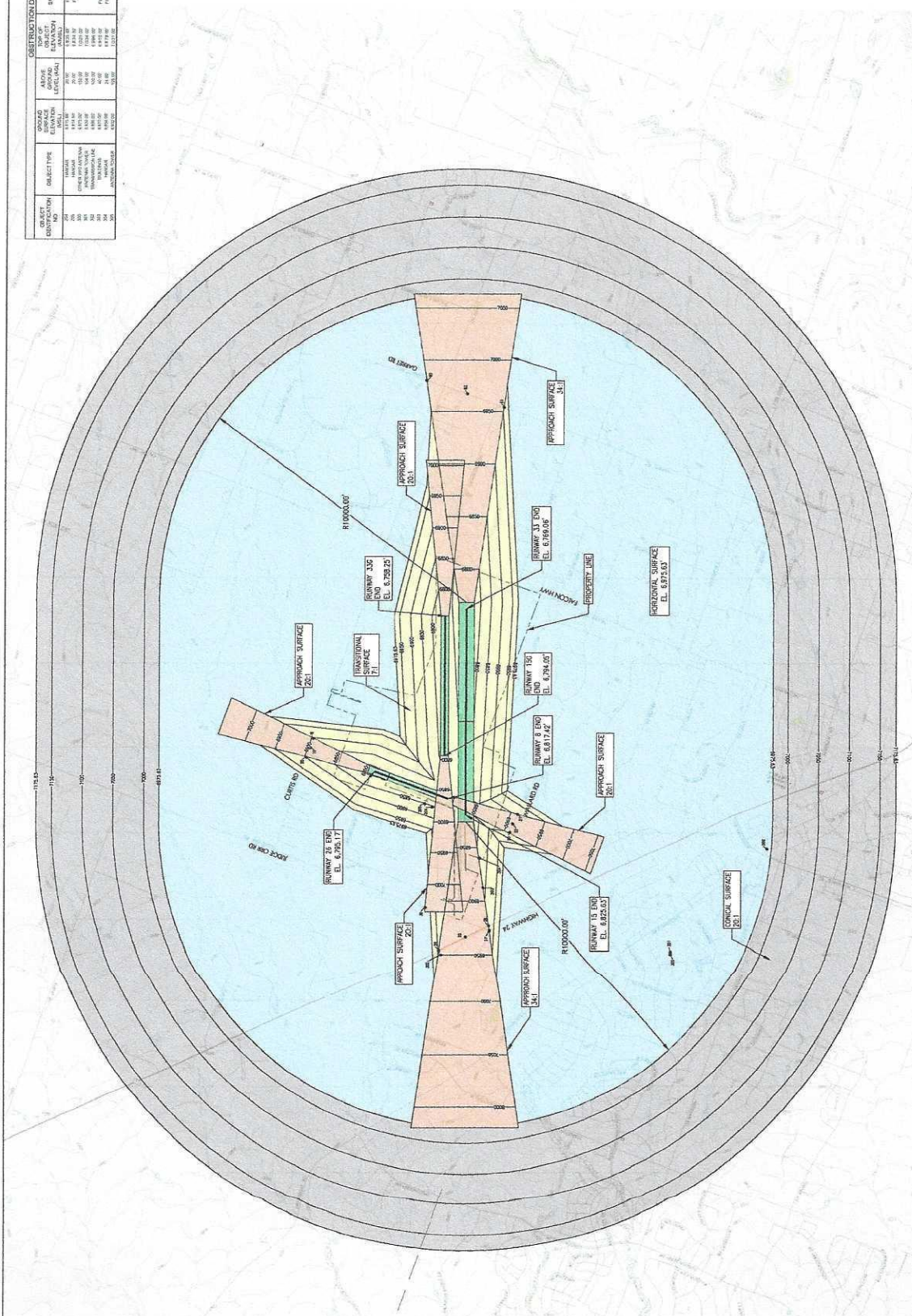
OBJECT ID	OBJECT DESCRIPTION	OBJECT TYPE	OBJECT ELEVATION (ASL)	OBJECT LEVEL (ASL)	OBJECT SURFACE REFERENCE	TRANSITIONAL SURFACE REFERENCE	DISPOSITION	FAA AIRSPACE CASE NUMBER
301	OBSTACLE	OBSTACLE	100.00	100.00	OBSTACLE	OBSTACLE	REMOVE	100-100-100
302	OBSTACLE	OBSTACLE	100.00	100.00	OBSTACLE	OBSTACLE	REMOVE	100-100-100
303	OBSTACLE	OBSTACLE	100.00	100.00	OBSTACLE	OBSTACLE	REMOVE	100-100-100
304	OBSTACLE	OBSTACLE	100.00	100.00	OBSTACLE	OBSTACLE	REMOVE	100-100-100
305	OBSTACLE	OBSTACLE	100.00	100.00	OBSTACLE	OBSTACLE	REMOVE	100-100-100
306	OBSTACLE	OBSTACLE	100.00	100.00	OBSTACLE	OBSTACLE	REMOVE	100-100-100
307	OBSTACLE	OBSTACLE	100.00	100.00	OBSTACLE	OBSTACLE	REMOVE	100-100-100
308	OBSTACLE	OBSTACLE	100.00	100.00	OBSTACLE	OBSTACLE	REMOVE	100-100-100
309	OBSTACLE	OBSTACLE	100.00	100.00	OBSTACLE	OBSTACLE	REMOVE	100-100-100
310	OBSTACLE	OBSTACLE	100.00	100.00	OBSTACLE	OBSTACLE	REMOVE	100-100-100



DRAWING LEGEND	
ITEM	FUTURE
APPROACH SURFACE	[Orange box]
CONICAL SURFACE	[Light blue box]
HORIZONTAL SURFACE	[Light green box]
PRIMARY SURFACE	[Light yellow box]
TRANSITIONAL SURFACE	[Light purple box]

NOTES

1. ALL ELEVATIONS ARE TO MEAN SEA LEVEL (MSL).
2. IMAGE SOURCE: USGS TOPO MAP FROM USGS IMARISE.
3. COORDINATE/ELEVATION DATA IS IN NAD83/NGVD03.
4. SEE INNER PORTION OF THE APPROACH PLAN AND PROFILE SHEETS FOR CLOSE IN OBSTRUCTIONS.
5. COLORADO REGULAR STATUTE 43-10-113, SAFE OPERATING AREA (SOA) REGULATIONS, AND FEDERAL AVIATION ADMINISTRATION (FAA) REGULATIONS TO THE EXTENT APPLICABLE, GOVERN THE DESIGN AND CONSTRUCTION OF OBSTRUCTIONS TO AIRCRAFT FLIGHT. THE DESIGN AND CONSTRUCTION OF OBSTRUCTIONS TO AIRCRAFT FLIGHT SHALL BE IN ACCORDANCE WITH THE FEDERAL REGULATIONS, PART 77, GOVERNING OBSTRUCTIONS TO AIRCRAFT FLIGHT.
6. COLORADO REGULAR STATUTE 24-81-802, CRITERIA FOR OBSTRUCTIONS TO AIRCRAFT FLIGHT, GOVERN THE DESIGN AND CONSTRUCTION OF OBSTRUCTIONS TO AIRCRAFT FLIGHT. THE DESIGN AND CONSTRUCTION OF OBSTRUCTIONS TO AIRCRAFT FLIGHT SHALL BE IN ACCORDANCE WITH THE FEDERAL REGULATIONS, PART 77, GOVERNING OBSTRUCTIONS TO AIRCRAFT FLIGHT.
7. SEPARATE UNCONVERTIBLE MOBILE SOURCES FROM RESIDENTIAL, COMMERCIAL, INDUSTRIAL, AND OTHER LOCAL DEVELOPMENT THAT MAY BE SUBJECT TO PUBLIC SAFETY AND HEALTH OR TO PROPERTY LOSS TO AIRCRAFT COURSE.



SHEET 08 of				
AIRPORT AIRSPACE DRAWING - FUTURE				
CDAG GRANT NO. 2014-FLY-01	AVIATION PROJ. NO. 2014-FLY-01			
DATE: MAY 2019	DATE: MAY 2019			
ISSUE RECORD				
DES. B.L.R.	NO.	BY	DATE	DESCRIPTION
DR. B.L.R.				
CH. S.E.S.				
APP. D.F.N.				



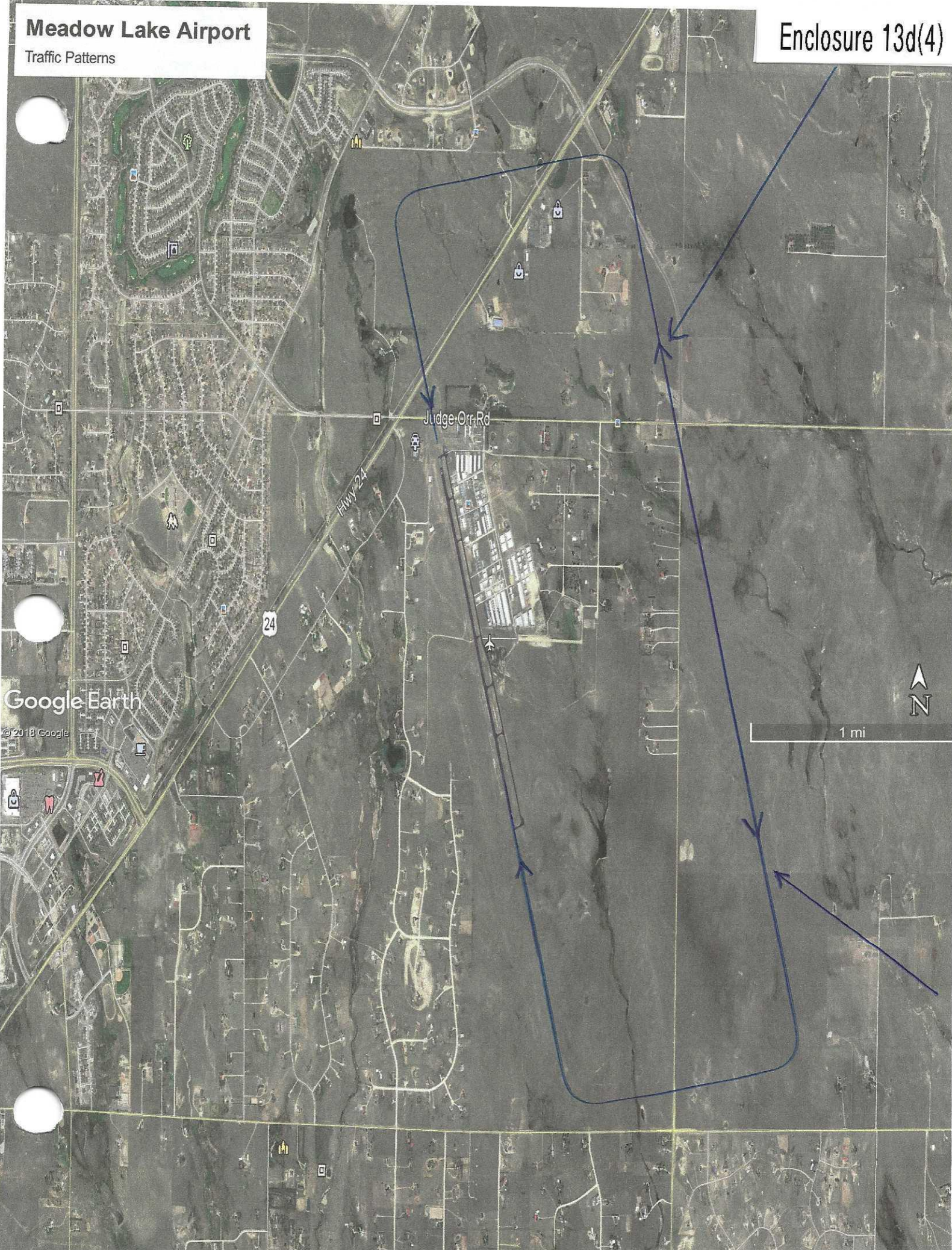
AVIATION

SCALE: 1" = 400' (AS SHOWN)

Meadow Lake Airport

Traffic Patterns

Enclosure 13d(4)



Meadow Lake Airport

Traffic Patterns

Enclosure 13d(5)



Meadow Lake Airport

Traffic Patterns

Enclosure 13d(6)

