

# Zone Map 423 - El Paso County - Development Services Department

## Zoning Designations

RS-2000D: Residential Suburban (20,000 sq. ft.)	F-5: Forest & Recreation (5 acres)
RS-6000: Residential Suburban (6,000 sq. ft.)	PUD: Planned Unit Development
RS-5000: Residential Suburban (5,000 sq. ft.)	CC: Commercial Community
RM-12: Residential Multi-Dwelling (12 DU/acre)	CR: Commercial Regional
RM-30: Residential Multi-Dwelling (30 DU/acre)	CS: Commercial Service
RR-0.5: Residential Rural (0.5 acres)	I-2: Limited Industrial
RR-2.5: Residential Rural (2.5 acres)	I-3: Heavy Industrial
RR-5: Residential Rural (5 acres)	A-5: Agricultural (5 acres)
RR-S: Residential - Topographic	A-35: Agricultural (35 acres)
MHP: Mobile Home Park	C-1: ** Commercial
MHP-R: Mobile Home Park, Rural	C-2: ** Commercial
MHS: Mobile Home Subdivision	M: ** Industrial
RVP: Recreational Vehicle Park	R-4: ** Planned Development

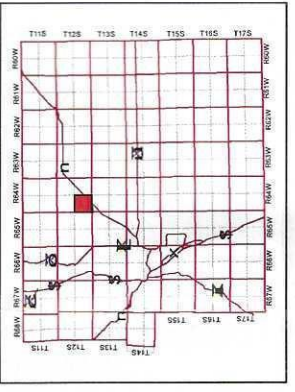
\*\* Indicates an obsolete designation

## Supporting Data

- Highways
- Major Roadways
- Creeks - Perennial
- Creeks - Intermittent
- Section Corner Nodes
- Incorporated Cities
- Parcels
- Military
- Pine National Forest
- Zone Map Boundary
- Zoning Overlay
- Special Users



## Vicinity Map

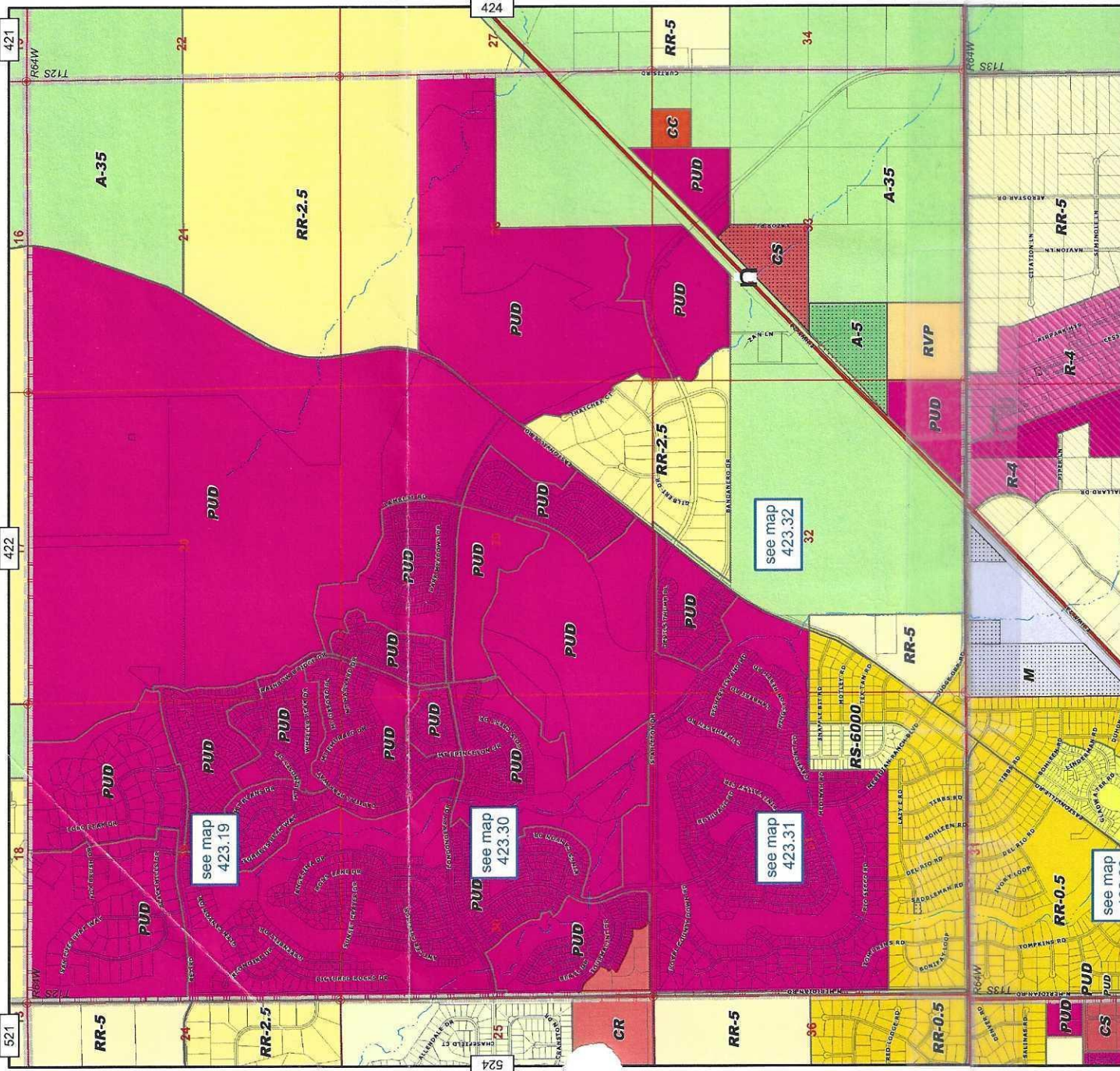


COPYRIGHT 2018 by the Board of County Commissioners, El Paso County, Colorado. All rights reserved. No part of this publication may be reproduced, stored in a retrieval system, or transmitted, in any form or by any means, without the specific written approval of the Board of County Commissioners, El Paso County, Colorado. This document was prepared from the best data available at the time of plotting and is for reference only. El Paso County, Colorado, makes no claim to the completeness or accuracy of the data contained herein.

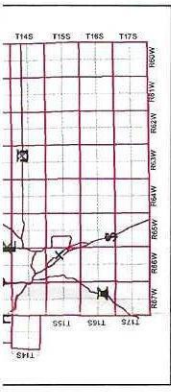
# Zone Map 423 - El Paso County - Development Services Department

## Zoning Designations

RS-2000D: Residential Suburban (20,000 sq. ft.)	F-5: Forest & Recreation (5 acres)
RS-6000: Residential Suburban (6,000 sq. ft.)	PUD: Planned Unit Development







Copyright 2018 by the Board of County Commissioners, El Paso County, Colorado. All rights reserved. No part of this document may be reproduced, stored in a retrieval system, or transmitted in any form or by any means, without the specific written approval of the Board of County Commissioners, El Paso County, Colorado. This document was prepared from the best data available at the time of plotting and is for internal use only. El Paso County, Colorado, makes no claim as to the completeness or accuracy of the data contained herein.

## El Paso County - Development Services Department

### Zoning Designations

RS-20000: Residential Suburban (20,000 sq. ft.)	P-5: Forest & Recreation (5 acres)
RS-5000: Residential Suburban (5,000 sq. ft.)	PUD: Planned Unit Development
RS-5000: Residential Suburban (5,000 sq. ft.)	CC: Commercial Community
RM-12: Residential Multi-Dwelling (12 DU/acre)	CR: Commercial Regional
RM-300: Residential Multi-Dwelling (30 DU/acre)	CS: Commercial Service
RR-0.5: Residential Rural (0.5 acres)	I-2: Limited Industrial
RR-2.5: Residential Rural (2.5 acres)	I-3: Heavy Industrial
RR-5: Residential Rural (5 acres)	A-5: Agricultural (5 acres)
RT: Residential - Topographic	A-35: Agricultural (35 acres)
MHP: Mobile Home Park	C-1: ** Commercial
MHP-R: Mobile Home Park, Rural	C-2: ** Commercial
MHS: Mobile Home Subdivision	N: ** Industrial
RVP: Recreational Vehicle Park	R-4: ** Planned Development

\*\* Indicates an obsolete designation

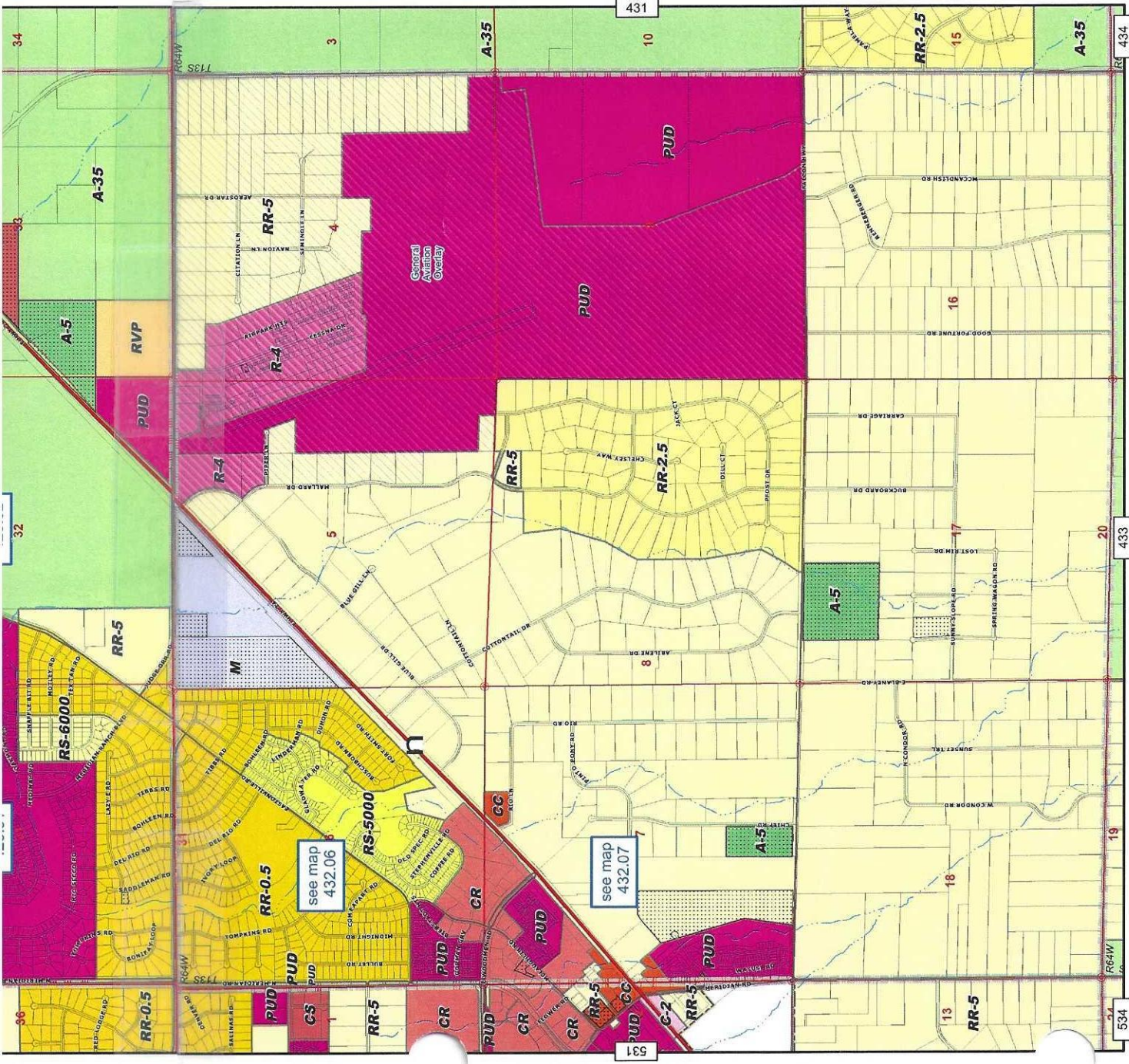
#### Supporting Data

- Highways
- Major Roadways
- Creeks - Perennial
- Creeks - Intermittent
- Section Corner Nodes
- Sections
- Parcels
- Military
- Pike National Forest
- Incorporated Cities
- Zone Map Boundary
- Zoning Overlay
- Special Uses

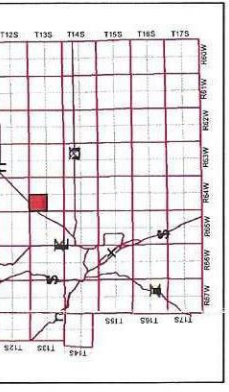
1 inch = 1,600 feet

January 18, 2018

Copyright 2018 by the Board of County Commissioners, El Paso County, Colorado. All rights reserved. No part of this document or data contained herein may be reproduced, stored in a retrieval system, or transmitted in any form or by any means, without the specific written approval of the Board of County Commissioners, El Paso County, Colorado. This document was prepared from the best data available at the time of plotting and is for internal use only. El Paso County, Colorado, makes no claim as to the completeness or accuracy of the data contained herein.



### Vicinity Map



Copyright 2018 by the Board of County Commissioners, El Paso County, Colorado. All rights reserved. No part of this document or data contained herein may be reproduced, stored in a retrieval system, or transmitted in any form or by any means, without the specific written approval of the Board of County Commissioners, El Paso County, Colorado. This document was prepared from the best data available at the time of plotting and is for internal use only. El Paso County, Colorado, makes no claim as to the completeness or accuracy of the data contained herein.