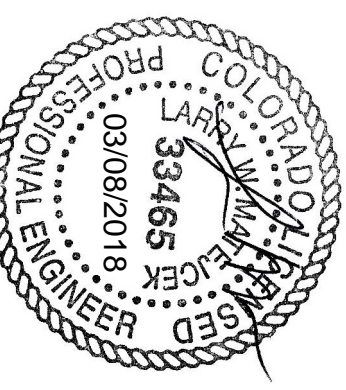
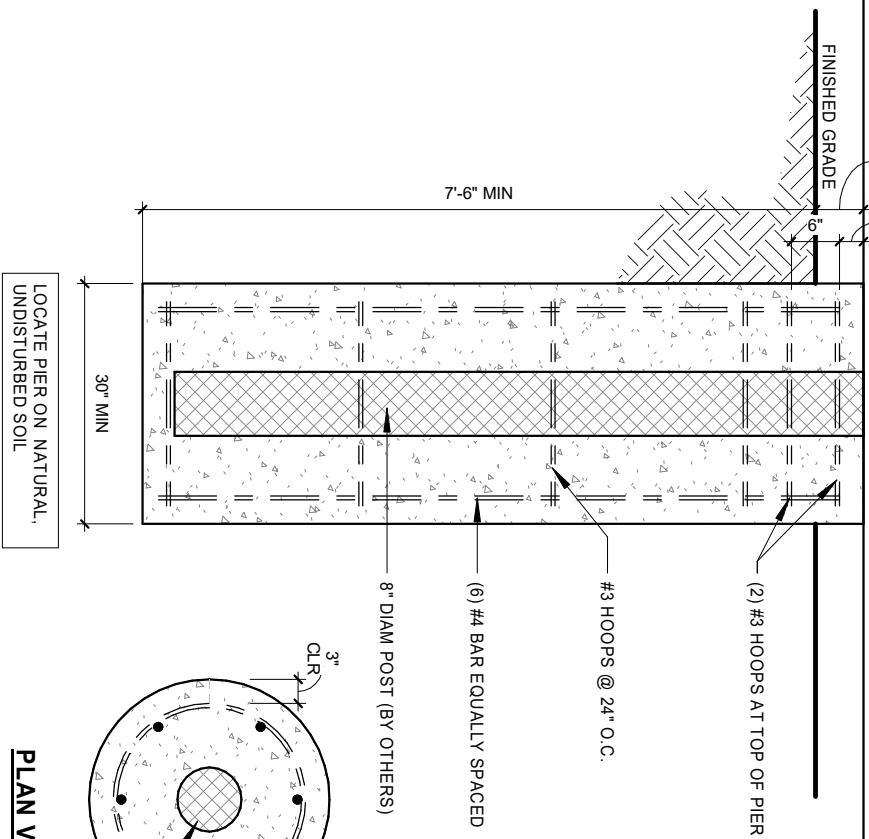


10'-0" WIDE x 12'-0" TALL SIGN (BY OTHERS)

PER MANF.
SPECS
3" MIN
8" MAX



STRUCTURAL ONLY

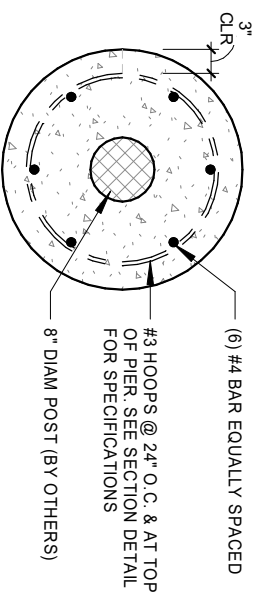


DESIGN NOTES:

UNRESTRAINED EMBEDDED POLE FOUNDATION PER 2009 IBC 1807.3.2. SOIL PARAMETERS ARE BASED ON A ASSUMED MINIMUM LATERAL BEARING OF 150 PSF AND A MINIMUM END BEARING OF 2000 PSF FOR A SILTY SANDY MATERIAL. SOIL PARAMETERS SHALL BE VERIFIED BY A COLORADO LICENSED PROFESSIONAL ENGINEER.

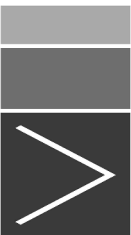
3,000 PSI AIR ENTRAINED CONCRETE REQUIRED

PLAN VIEW



PIER DETAIL

1/2" = 1'-0"

PROJECT No.	18-0039	FOUNDATION DETAIL 1403 Woolsey Heights Colorado Springs, CO 80915
DATE	MAR. 7, 2018	
DRAWN BY	BLD	
CHECKED BY	LM	
D-1		(719) 452-4325  Design Co.
Pier Detail		
allegrodesignco.com		Design, with family in mind