





















THE ABOVE PLAN, SPECIFICATIONS, MEASUREMENTS, AND DIMENSIONS ARE FOR INFORMATION ONLY. THE USER SHALL BE RESPONSIBLE FOR VERIFYING THE ACCURACY OF ALL INFORMATION AND DIMENSIONS SHOWN ON THIS PLAN. THE USER SHALL BE RESPONSIBLE FOR OBTAINING ALL NECESSARY PERMITS AND APPROVALS FROM THE APPROPRIATE AGENCIES. THE USER SHALL BE RESPONSIBLE FOR OBTAINING ALL NECESSARY PERMITS AND APPROVALS FROM THE APPROPRIATE AGENCIES. THE USER SHALL BE RESPONSIBLE FOR OBTAINING ALL NECESSARY PERMITS AND APPROVALS FROM THE APPROPRIATE AGENCIES.

File Location: D:\DEN\Projects\0399-00 Mountain View Academy\Design\CDs\Civil\Phase II\on-site\HCP.dwg Plot Date: 2/7/2020 5:21 PM Last Saved By: JRP/KEWA



Know what's below.  
Call before you dig.

LINE TABLE				
LINE #	BEARING	LENGTH	START NORTHING EASTING	END NORTHING EASTING
L: 4	S36° 43' 35"E	18.84'	1376013.304 3237023.897	1375998.206 3237035.162
L: 8	S36° 43' 35"E	16.00'	1376072.972 3236996.846	1376060.148 3237006.414
L: 9	S53° 16' 25"W	327.00'	1376072.972 3236996.846	1375877.427 3236734.756
L: 10	S36° 43' 35"E	16.00'	1375877.427 3236734.756	1375864.603 3236744.324
L: 11	S53° 16' 25"W	15.00'	1375860.405 3236731.691	1375851.435 3236731.691
L: 12	S36° 43' 35"E	79.99'	1375818.740 3236692.887	1375754.628 3236740.721
L: 13	S53° 16' 25"W	371.65'	1376080.173 3236996.464	1375857.926 3236698.585
L: 14	S36° 43' 35"E	21.60'	1376094.373 3237036.400	1376077.058 3237049.318
L: 16	S53° 16' 25"W	57.74'	1375930.548 3236715.653	1375896.023 3236669.379
L: 17	S66° 43' 35"E	17.90'	1375896.023 3236669.379	1375888.951 3236685.820
L: 18	S53° 16' 25"W	37.83'	1375883.791 3236886.429	1375861.171 3236856.112
L: 27	S55° 36' 06"W	19.78'	1376059.409 3237117.112	1376048.233 3237100.789
L: 28	S36° 43' 35"E	57.73'	1376012.655 3237094.875	1375966.384 3237129.397
L: 29	S53° 16' 25"W	284.96'	1375874.376 3237061.773	1375703.973 3236833.380
L: 30	S88° 16' 25"W	37.99'	1375784.562 3236844.279	1375783.417 3236806.311
L: 31	S36° 43' 35"E	13.96'	1375802.750 3236845.370	1375791.558 3236853.720
L: 32	S53° 16' 25"W	18.00'	1375802.750 3236845.370	1375791.986 3236906.233
L: 33	S36° 43' 35"E	14.02'	1375803.207 3236822.571	1375791.967 3236830.957
L: 34	S53° 16' 25"W	47.68'	1375803.818 3236818.372	1375775.307 3236780.159
L: 35	N36° 43' 35"W	6.00'	1375877.427 3236734.756	1375882.236 3236861.497
L: 36	N36° 43' 35"W	6.00'	1375878.623 3236736.359	1375883.432 3236732.771
L: 37	N0° 24' 42"W	61.29'	1375654.490 3236760.961	1375715.783 3236760.520
L: 38	S55° 36' 06"W	18.23'	1376079.345 3237103.747	1376069.048 3237088.709
L: 40	S36° 43' 35"E	129.78'	1375837.370 3236646.549	1375733.350 3236724.157
L: 41	N0° 24' 42"W	43.02'	1375653.108 3236736.970	1375696.129 3236736.661
L: 42	S53° 16' 25"W	1.00'	1376060.136 3237011.414	1376059.538 3237010.613
L: 45	N63° 24' 25"E	8.43'	1376162.045 3237045.813	1376165.818 3237053.349
L: 46	N53° 16' 25"E	164.69'	1376061.245 3236910.058	1376159.727 3237042.054
L: 47	S36° 43' 35"E	157.10'	1376070.111 3236642.500	1375944.192 3236736.448
L: 48	S36° 43' 35"E	22.40'	1376186.289 3236628.341	1376188.336 3236641.735
L: 49	S53° 16' 25"W	20.00'	1376198.249 3236644.371	1376186.289 3236628.341
L: 50	N36° 43' 36"W	110.70'	1375950.836 3237108.558	1376039.558 3237042.363
L: 51	S53° 16' 25"W	18.00'	1376024.068 3237038.324	1376013.304 3237023.897
L: 52	S36° 43' 35"E	14.00'	1376035.289 3237029.952	1376024.068 3237038.324
L: 53	S53° 16' 25"W	2.50'	1376040.983 3237032.566	1376039.488 3237030.563
L: 57	S53° 16' 25"W	62.35'	1375938.002 3236714.774	1375900.715 3236664.797
L: 58	N66° 43' 35"W	9.24'	1375934.352 3236723.260	1375938.002 3236714.774
L: 59	S53° 16' 25"W	16.45'	1375944.192 3236736.448	1375934.352 3236723.260
L: 60	N36° 43' 35"W	31.61'	1375956.152 3236752.478	1375981.491 3236733.573
L: 61	N36° 43' 35"W	31.61'	1375989.506 3236727.593	1376014.845 3236708.687

LINE TABLE				
LINE #	BEARING	LENGTH	START NORTHING EASTING	END NORTHING EASTING
L: 62	N36° 43' 35"W	53.51'	1376019.654 3236705.099	1376062.543 3236673.100
L: 63	N36° 43' 35"W	14.36'	1376070.558 3236667.120	1376082.071 3236658.530
L: 64	N53° 16' 25"E	92.62'	1376128.254 3236665.246	1376183.643 3236739.485
L: 65	N36° 43' 35"W	6.00'	1375909.719 3236778.037	1375914.528 3236774.449
L: 66	N36° 43' 35"W	6.00'	1375914.503 3236784.449	1375919.312 3236780.861
L: 67	N36° 43' 35"W	6.00'	1375945.300 3236825.728	1375950.109 3236825.738
L: 68	N36° 43' 35"W	6.00'	1375946.496 3236827.329	1375951.305 3236823.741
L: 69	N36° 43' 35"W	6.00'	1376005.996 3236907.078	1376010.805 3236903.490
L: 70	N36° 43' 35"W	6.00'	1376010.780 3236913.490	1376015.569 3236909.802
L: 71	N36° 43' 35"W	6.00'	1376041.577 3236954.788	1376046.386 3236951.180
L: 72	N36° 43' 35"W	6.00'	1376042.773 3236956.371	1376047.582 3236952.783
L: 73	N36° 43' 35"W	6.00'	1376070.281 3236993.240	1376075.090 3236989.652
L: 74	N36° 43' 35"W	5.00'	1376072.177 3236994.944	1376076.184 3236991.954
L: 75	N36° 43' 35"W	6.00'	1375974.004 3236864.198	1375978.813 3236860.610
L: 76	N36° 43' 35"W	6.00'	1375975.200 3236865.801	1375980.009 3236862.213
L: 77	S36° 43' 35"E	31.61'	1376154.985 3236966.108	1376129.646 3236985.013
L: 78	S36° 43' 35"E	90.13'	1376235.235 3236906.233	1376163.000 3236960.128
L: 79	N36° 43' 35"W	185.10'	1376133.234 3236989.822	1376281.594 3236879.130
L: 80	S53° 16' 25"W	16.00'	1376281.594 3236879.130	1376272.028 3236866.306
L: 81	S53° 16' 25"W	78.50'	1376268.438 3236861.497	1376221.496 3236798.580
L: 82	N53° 16' 25"E	100.50'	1376213.099 3236797.359	1376273.197 3236877.909
L: 83	N77° 43' 16"E	34.06'	1375677.437 3236815.581	1375684.880 3236848.857
L: 84	N53° 18' 59"E	73.23'	1375684.680 3236848.857	1375728.426 3236907.582
L: 85	N53° 18' 59"E	135.84'	1375736.883 3236918.935	1375818.035 3237027.875
L: 86	N50° 41' 19"E	60.92'	1375818.035 3237027.875	1375856.632 3237075.012
L: 87	N55° 20' 25"E	53.93'	1375856.632 3237075.012	1375887.302 3237119.371
L: 88	N89° 35' 18"E	103.04'	1375641.406 3236666.290	1375642.147 3236769.328
L: 89	S0° 24' 42"E	443.34'	1376088.994 3236613.358	1375645.665 3236616.544
L: 90	S53° 16' 23"W	48.10'	1376384.622 3236784.560	1376355.858 3236746.009
L: 91	S0° 24' 42"E	154.47'	1376539.088 3236783.450	1376384.622 3236784.560
L: 92	S89° 35' 18"W	155.40'	1376540.616 3236955.401	1376539.499 3236900.005
L: 93	N36° 43' 37"W	121.53'	1375949.501 3237211.419	1376046.906 3237138.744
L: 94	N53° 16' 23"E	422.45'	1375675.882 3236869.776	1375928.508 3237208.367

CURVE TABLE							
CURVE #	LENGTH	DELTA	RADIUS	CRD LENGTH	CRD BEARING	START NORTHING EASTING	END NORTHING EASTING
C: 8	39.27'	180° 00' 00"	12.50'	25.00'	N36° 43' 35"W	1376060.136 3237011.414	1376080.173 3236996.464
C: 9	4.71'	90° 00' 00"	3.00'	4.24'	S81° 43' 35"E	1376060.148 3237006.414	1376059.538 3237010.613
C: 10	4.71'	90° 00' 00"	3.00'	4.24'	N8° 16' 25"E	1375860.405 3236743.714	1375864.603 3236744.324
C: 11	102.35'	130° 18' 44"	45.00'	81.67'	S11° 52' 58"E	1375851.435 3236731.691	1375771.514 3236748.508
C: 12	5.43'	103° 18' 05"	3.00'	4.72'	N25° 08' 47"W	1375767.240 3236750.514	1375771.514 3236748.508
C: 13	12.48'	11° 10' 32"	64.00'	12.46'	S21° 09' 29"W	1375767.240 3236750.514	1375755.617 3236746.015
C: 14	6.69'	127° 42' 11"	3.00'	5.39'	N79° 25' 19"E	1375754.628 3236740.721	1375755.617 3236746.015
C: 15	43.98'	90° 00' 00"	28.00'	39.60'	S8° 16' 25"W	1375857.926 3236698.585	1375818.740 3236692.887
C: 16	63.62'	90° 00' 00"	40.50'	57.28'	N81° 43' 35"W	1376094.373 3237036.400	1376102.615 3236979.720
C: 18	6.28'	120° 00' 00"	3.00'	5.20'	N6° 43' 35"W	1375883.791 3236686.429	1375888.951 3236685.820
C: 19	42.60'	97° 38' 09"	25.00'	37.63'	S49° 13' 46"E	1375654.490 3236780.961	1375629.916 3236789.460
C: 20	39.25'	89° 57' 37"	25.00'	35.34'	N44° 34' 05"E	1375627.929 3236712.168	1375653.108 3236736.970
C: 22	38.34'	87° 52' 20"	25.00'	34.69'	N80° 27' 44"W	1376059.409 3237151.325	1376059.409 3237117.112
C: 23	37.65'	86° 17' 03"	25.00'	34.19'	N12° 27' 35"E	1376079.345 3237103.747	1376112.730 3237111.124
C: 35	40.29'	92° 19' 42"	25.00'	36.07'	S9° 26' 15"W	1376048.233 3237100.789	1376012.655 3237094.875
C: 36	80.05'	106° 39' 31"	43.00'	68.98'	N16° 36' 10"E	1375900.281 3237109.687	1375966.384 3237129.397
C: 37	54.86'	16° 39' 31"	188.00'	54.47'	S61° 36' 10"W	1375900.281 3237109.687	1375874.376 3237061.773
C: 38	161.36'	215° 00' 00"	43.00'	82.02'	S19° 13' 35"E	1375781.418 3236806.371	1375703.973 3236833.380
C: 40	122.48'	155° 56' 56"	45.00'	88.02'	S10° 17' 57"W	1375783.417 3236806.311	1375783.417 3236790.573
C: 41	9.17'	30° 54' 14"	17.00'	9.06'	N72° 49' 17"E	1375784.562 3236844.279	1375787.237 3236852.933
C: 42	4.93'	94° 05' 46"	3.00'	4.39'	N10° 19' 17"E	1375787.237 3236852.933	1375791.558 3236853.720
C: 43	4.71'	90° 00' 00"	3.00'	4.24'	N81° 43' 35"W	1375803.207 3236822.571	1375803.818 3236818.372
C: 44	45.95'	57° 14' 21"	46.00'	44.07'	S24° 39' 14"W	1375755.307 3236780.159	1375735.257 3236761.777
C: 45	19.35'	3° 33' 14"	312.00'	19.35'	N2° 11' 19"W	1375715.783 3236760.520	1375735.118 3236759.782
C: 46	45.90'	87° 40' 18"	30.00'	41.56'	S80° 33' 45"E	1376075.862 3237047.715	1376069.048 3237088.709
C: 47	39.93'	36° 18' 53"	63.00'	39.27'	N18° 34' 09"W	1375696.129 3236736.661	1375733.350 3236724.157
C: 52	15.53'	89° 00' 02"	10.00'	14.02'	S72° 05' 34"E	1376165.818 3237053.349	1376161.507 3237066.688
C: 54	4.42'	10° 08' 01"	25.00'	4.42'	N58° 20' 25"E	1376159.727 3237042.054	1376162.045 3237045.813
C: 57	67.12'	72° 33' 38"	53.00'	62.72'	S0° 26' 47"E	1376132.833 3236642.012	1376070.111 3236642.500
C: 58	37.99'	72° 33' 38"	30.00'	35.50'	S0° 26' 47"E	1376168.336 3236641.735	1376132.833 3236642.012
C: 61	47.12'	90° 00' 00"	30.00'	42.43'	N81° 43' 35"W	1376177.249 3236697.469	1376183.354 3236655.484
C: 62	30.72'	106° 39' 31"	16.50'	26.47'	N16° 36' 10"E	1375925.172 3237100.594	1375905.537 3237108.157
C: 63	19.59'	5° 14' 44"	214.00'	19.59'	N67° 18' 34"E	1375917.147 3237082.696	1375924.702 3237100.766
C: 64	8.31'	158° 43' 37"	3.00'	5.90'	S35° 57' 00"E	1375921.921 3237079.234	1375917.147 3237

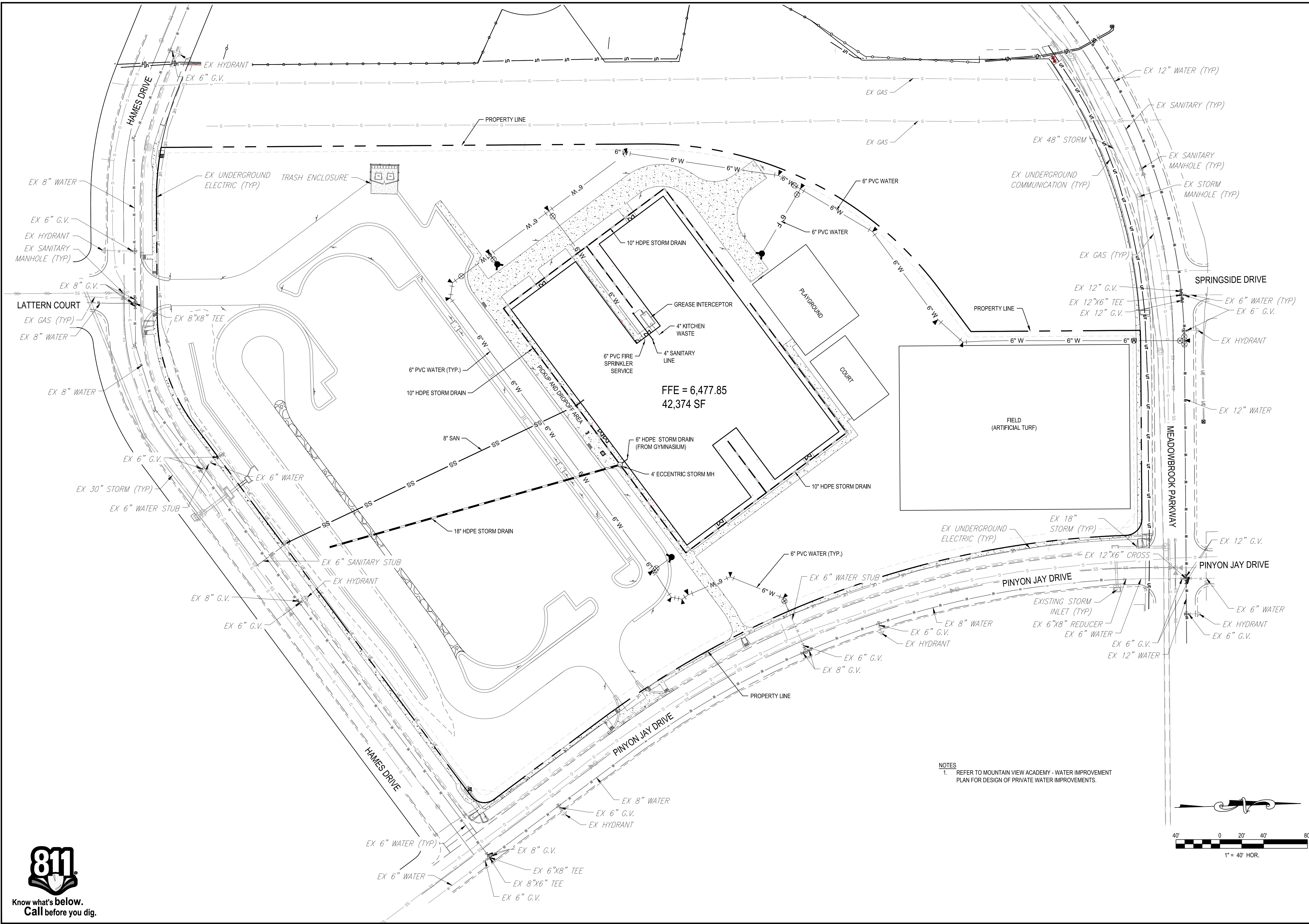






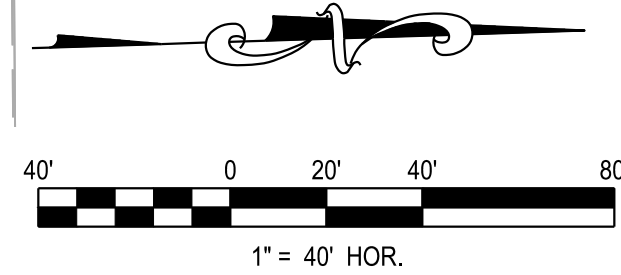
THIS AND ANY OTHER ELECTRONIC MEDIA CONTAINED HEREIN IS AN INSTRUMENT OF SERVICE PREPARED BY MERRICK AND COMPANY FOR A DEFINED PROJECT. IT IS NOT INTENDED OR REPRESENTED TO BE SUITABLE FOR REUSE IN WHOLE OR IN PART ON OTHER PROJECTS OR ON ANY OTHER PROJECTS WITHOUT THE WRITTEN CONSENT OF MERRICK AND COMPANY. MERRICK AND COMPANY SHALL BE AT THE SOLE RISK FOR THE UNAUTHORIZED USER WITHOUT LIABILITY OR LOSS OF SERVICE TO MERRICK AND COMPANY.


File Location: Q:\DEN\Projects\0399-00 Mountain View Academy\Design\Civil\Phase II\on-site\OVERALL UTILS.dwg Plot Date: 2/7/2020 5:23 PM Last Saved By: IRYPKEWA




FFE = 6,477.85  
42,374 SF

NOTES  
1. REFER TO MOUNTAIN VIEW ACADEMY - WATER IMPROVEMENT PLAN FOR DESIGN OF PRIVATE WATER IMPROVEMENTS.





**MERRICK**  
Engineering / Architecture / Design-Build / Surveying / Planning / Geospatial Solutions  
5970 GREENWOOD PLAZA BLVD. GREENWOOD VILLAGE, CO 80111  
303-751-0741  
www.merrick.com



**NATIONAL HERITAGE ACADEMIES**

REV	REVISION DESCRIPTION	DATE

**MOUNTAIN VIEW ACADEMY**  
CIVIL CONSTRUCTION DOCUMENTS  
OVERALL UTILITY EXHIBIT

ISSUED FOR REVIEW

FOR AND ON BEHALF OF MERRICK & COMPANY

JOB NUMBER: 65120399

DATE: 02/07/2020

SHEET: **C2.4**

8 of 20

FE STAMP

DATE: 02/07/2020

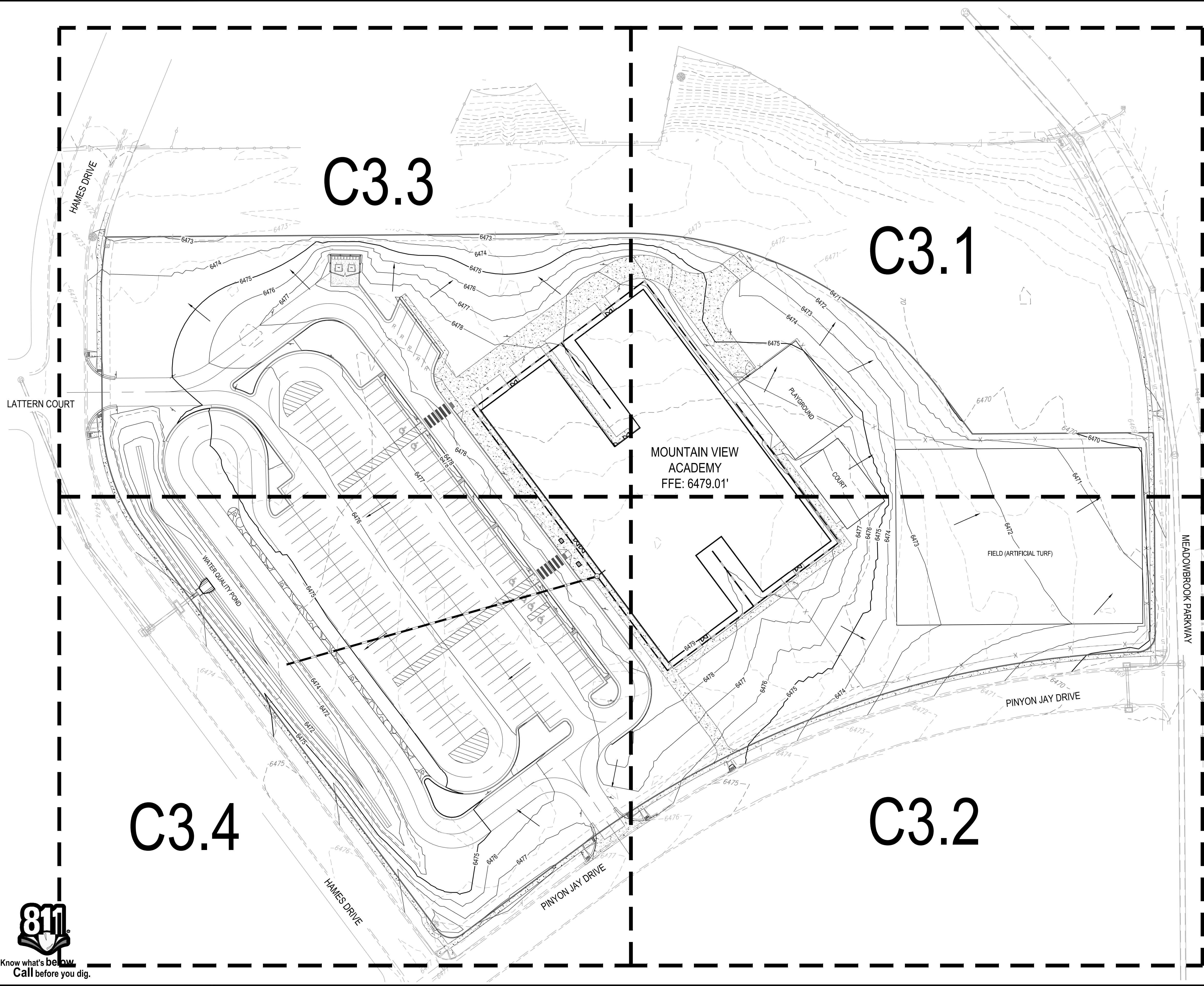
SHEET: **C2.4**





THIS AND ANY OTHER ELECTRONIC MEDIA REPRESENTS AN INSTRUMENT OF SERVICE PREPARED BY MERRICK AND COMPANY FOR A DEFINED PROJECT. IT IS NOT INTENDED OR REPRESENTED TO BE SUITABLE FOR REUSE IN WHOLE OR IN PART OR IN EXTENSIONS OF THE PROJECT OR ON ANY OTHER PROJECT. THE USER SHALL BE RESPONSIBLE FOR OBTAINING ALL NECESSARY PERMITS AND APPROVALS FROM THE APPROPRIATE AGENCIES. MERRICK AND COMPANY SHALL BE AT THE SOLE RISK FOR THE UNAUTHORIZED USER WITHOUT LIABILITY OR LOSS OF SERVICE TO MERRICK AND COMPANY.

File Location: Q:\DENProjects\0389-00 Mountain View Academy\Design\CDS\Civil\Phase II\on-site\OVERALL GRADING.dwg Plot Date: 2/7/2020 5:24 PM Last Saved By: FPAYNE



Know what's below.  
Call before you dig.

REV	REVISION DESCRIPTION	DATE	CHND/CHKD/APPR

**MOUNTAIN VIEW ACADEMY**  
CIVIL CONSTRUCTION DOCUMENTS  
OVERALL GRADING PLAN

FOR REVIEW

FOR AND ON BEHALF OF MERRICK'S COMPANY

JOB NUMBER: 65120399  
DATE: 02/07/2020  
SHEET: **C3.0**

9 of 20















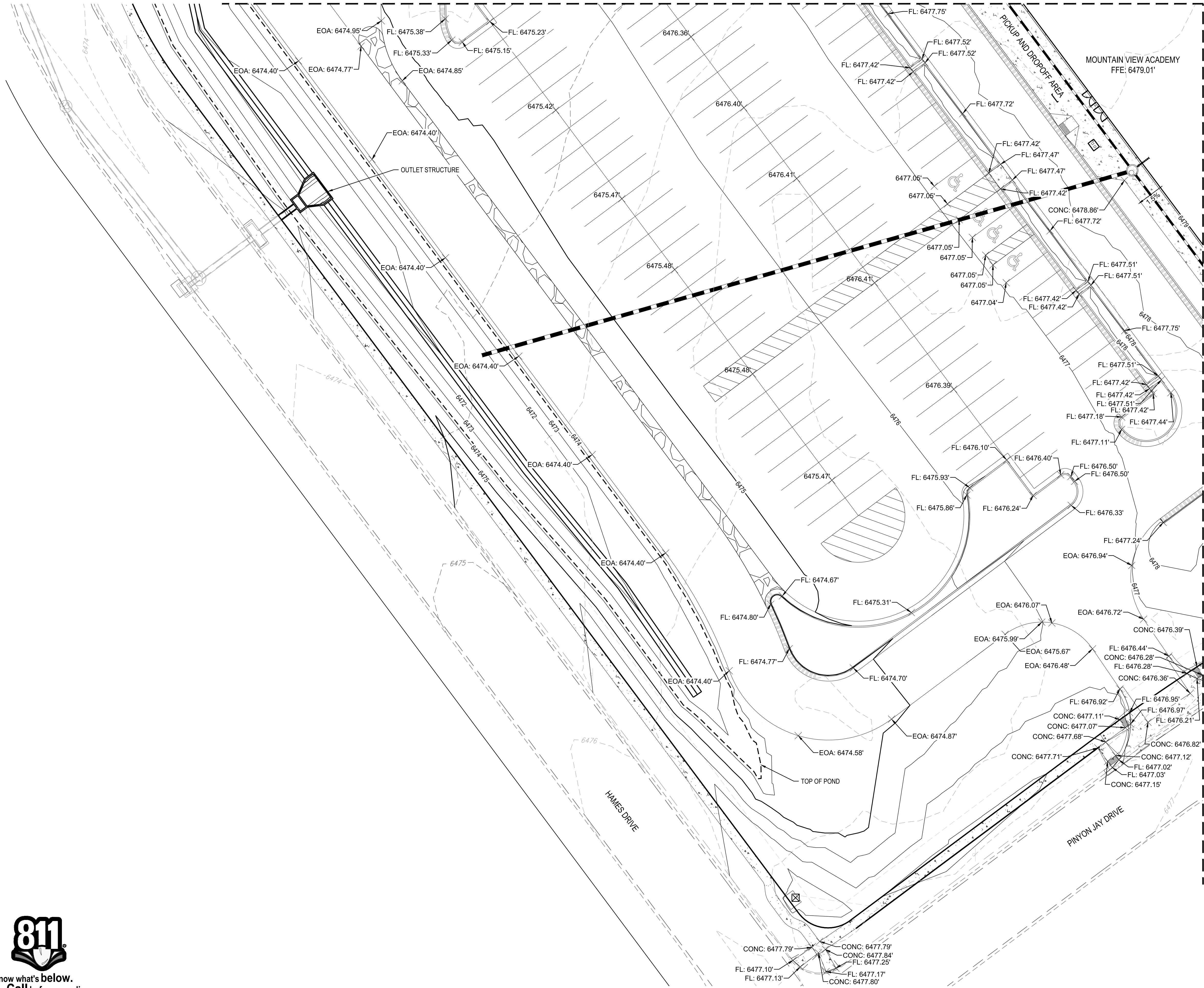
THIS AND ANY OTHER ELECTRONIC MEDIA COUNTERPART IS AN INSTRUMENT OF SERVICE PREPARED BY MERRICK AND COMPANY FOR A DEFINED PROJECT. IT IS NOT INTENDED OR REPRESENTED TO BE SUITABLE FOR REUSE IN WHOLE OR IN PART ON OTHER PROJECTS OR ON ANY OTHER PROJECTS. MERRICK AND COMPANY SHALL BE AT THE SOLE RISK FOR THE UNAUTHORIZED USER WITHOUT LIABILITY TO MERRICK AND COMPANY.

File Location: Q:\DENProjects\0389-00 Mountain View Academy\Design\CDS\CivilPhase\11on-site\DETAIL GRADING.dwg Plot Date: 2/7/2020 5:24 PM Last Saved By: FPAYNE



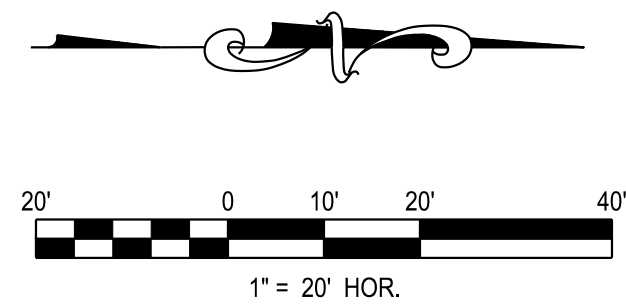
Know what's below.  
Call before you dig.

MATCHLINE  
SEE SHEET C3.3



LEGEND  
----- DENOTES THE USE OF SPILL CURB

MATCHLINE  
SEE SHEET C3.2



REV	REVISION DESCRIPTION	DATE	CHKD	APPD

**MOUNTAIN VIEW ACADEMY**  
CIVIL CONSTRUCTION DOCUMENTS  
DETAIL GRADING PLAN

ISSUED FOR REVIEW  
FOR AND ON BEHALF OF MERRICK & COMPANY

JOB NUMBER	65120399
DATE	02/07/2020
SHEET	<b>C3.4</b>
13	of 20

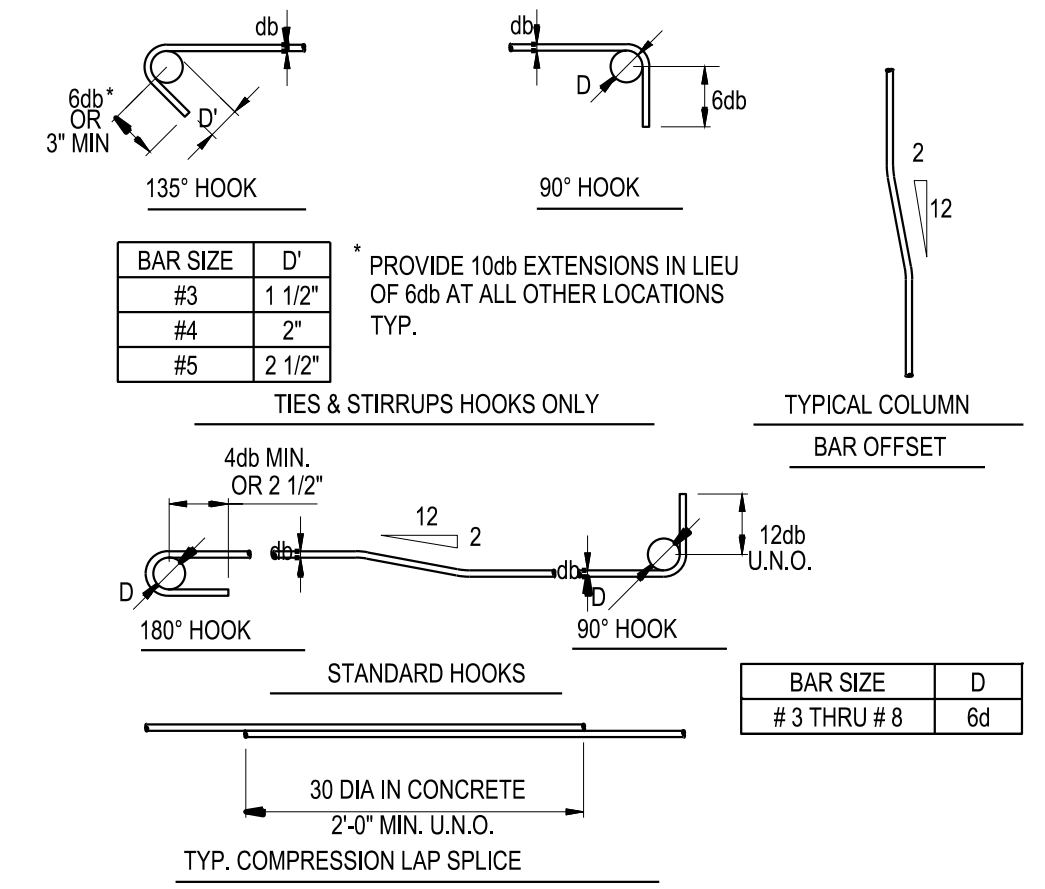
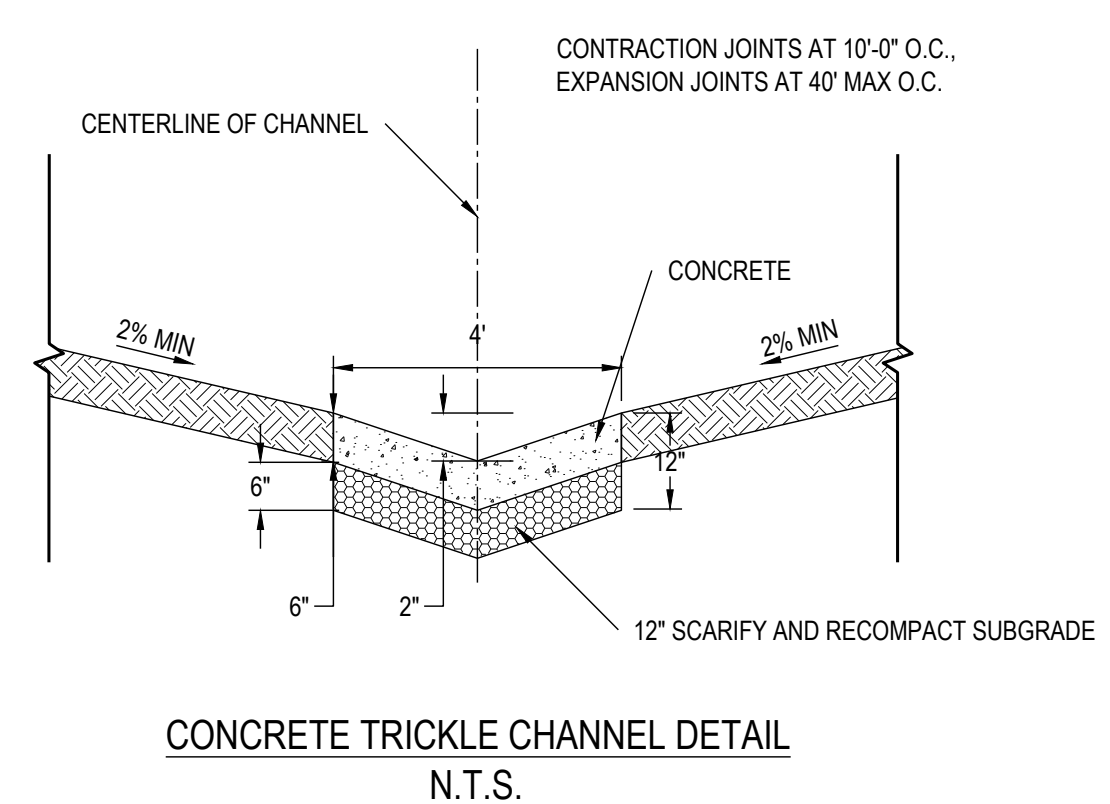
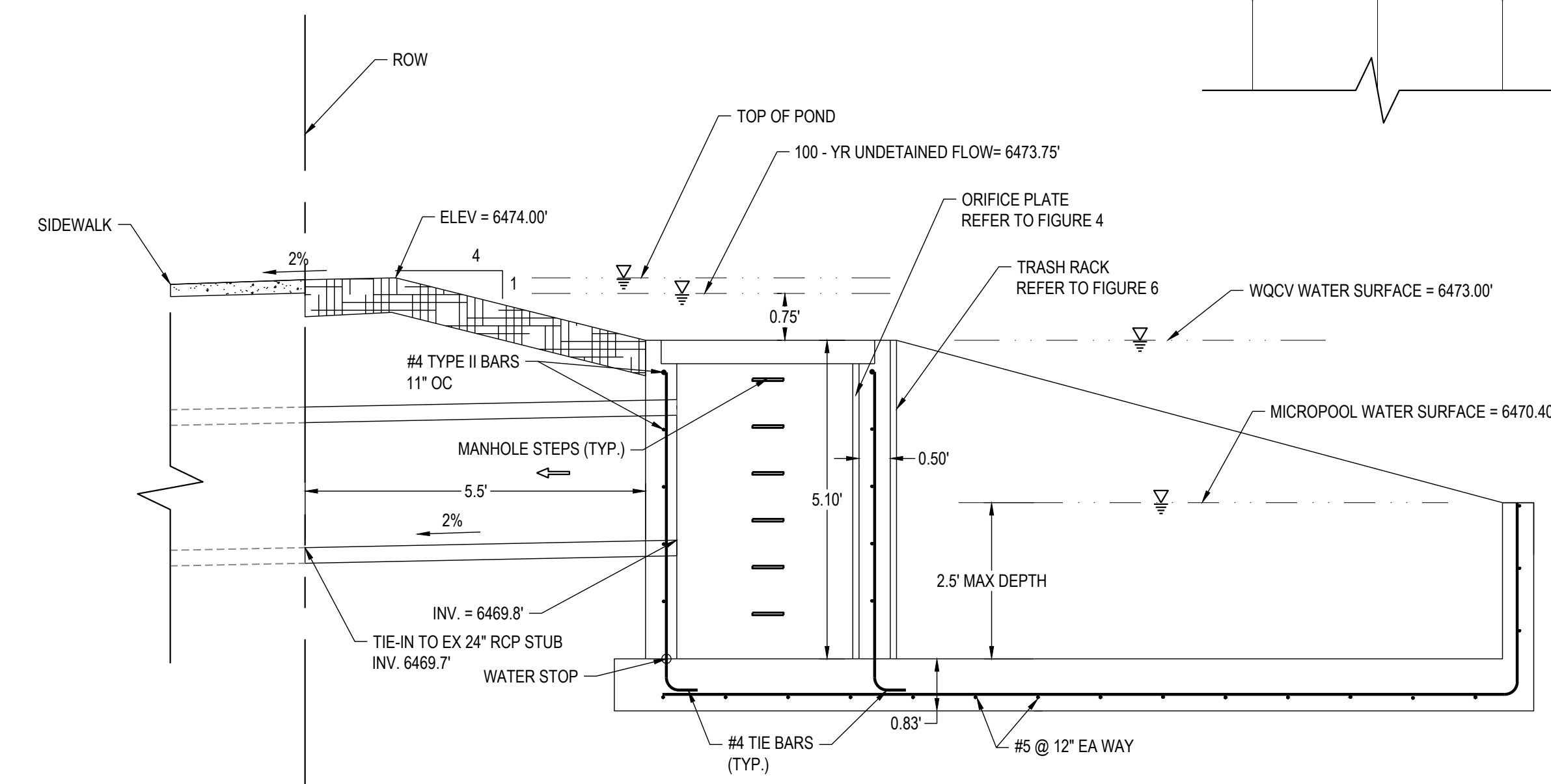
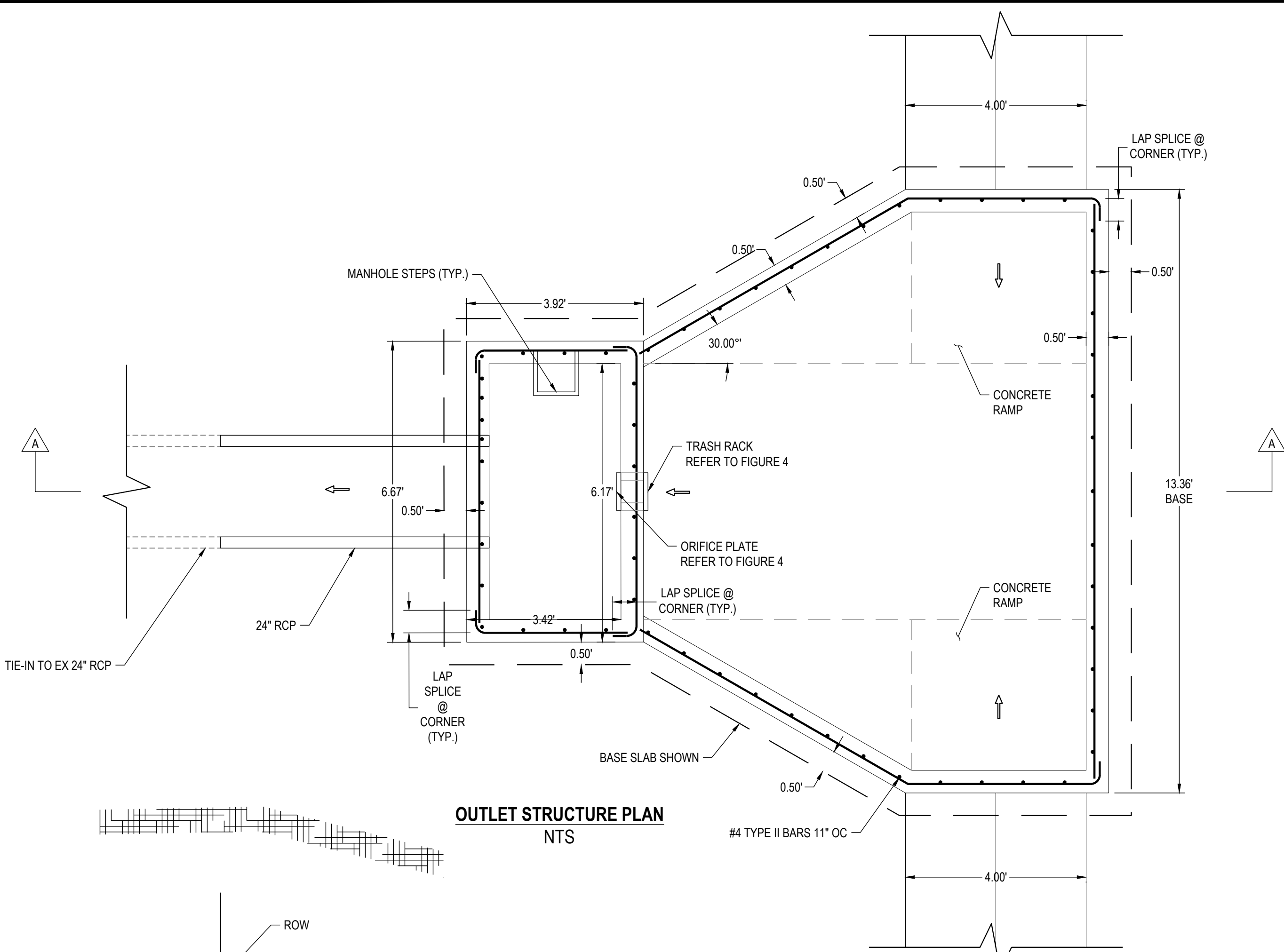






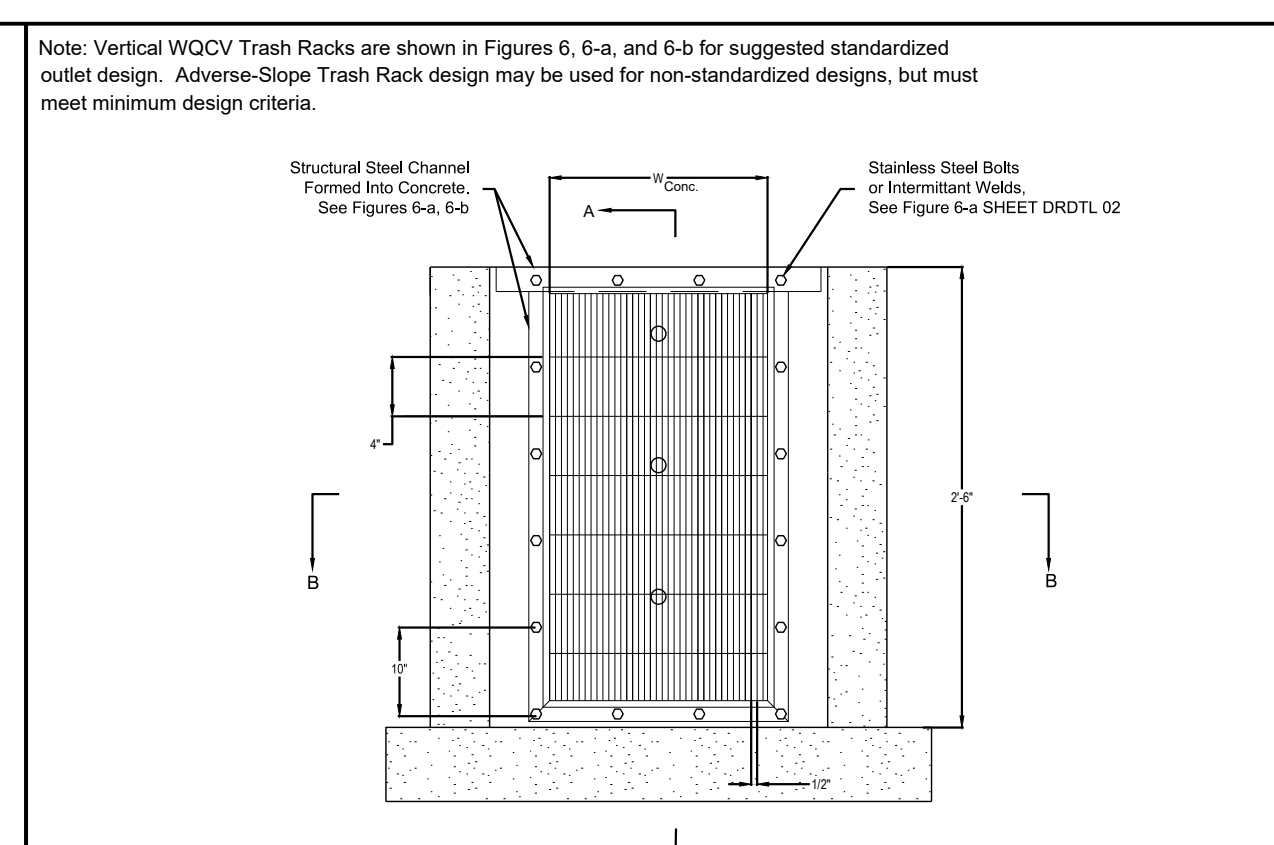
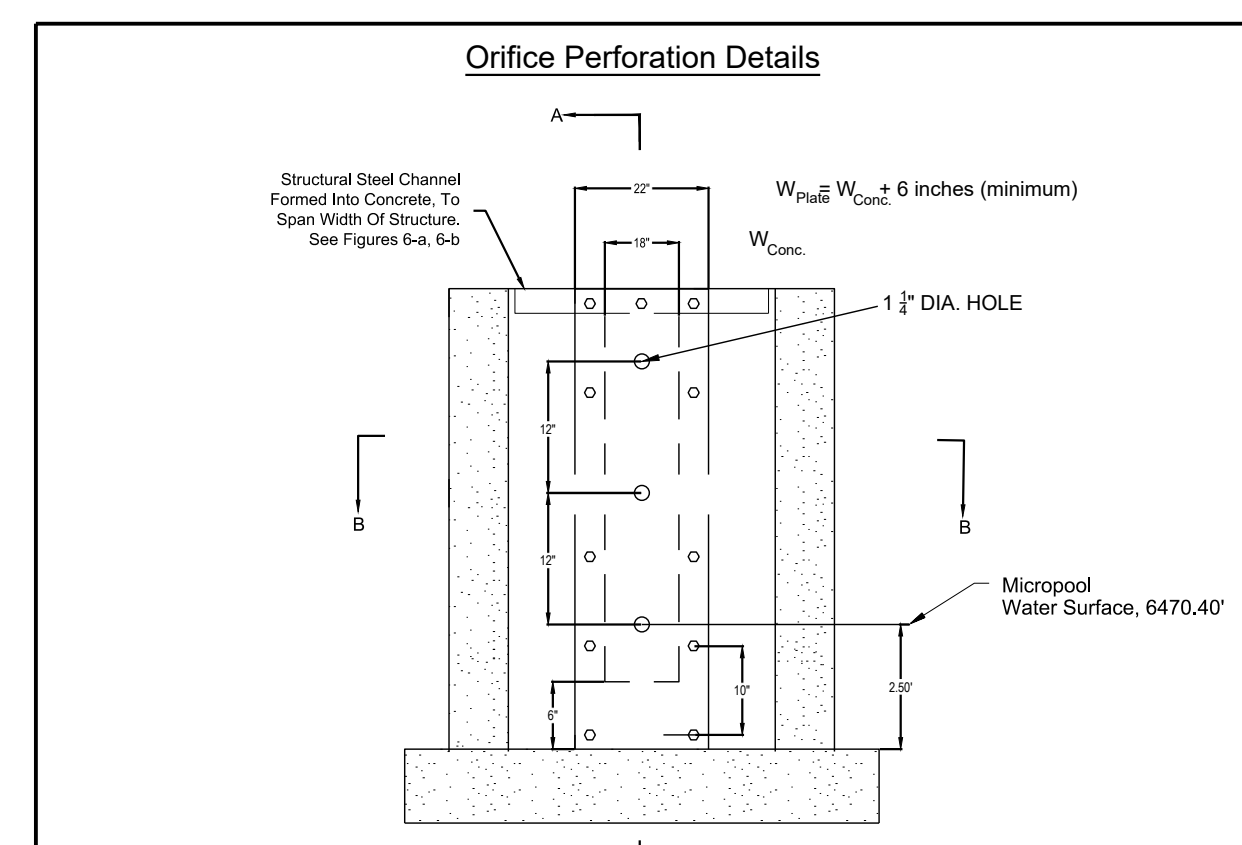
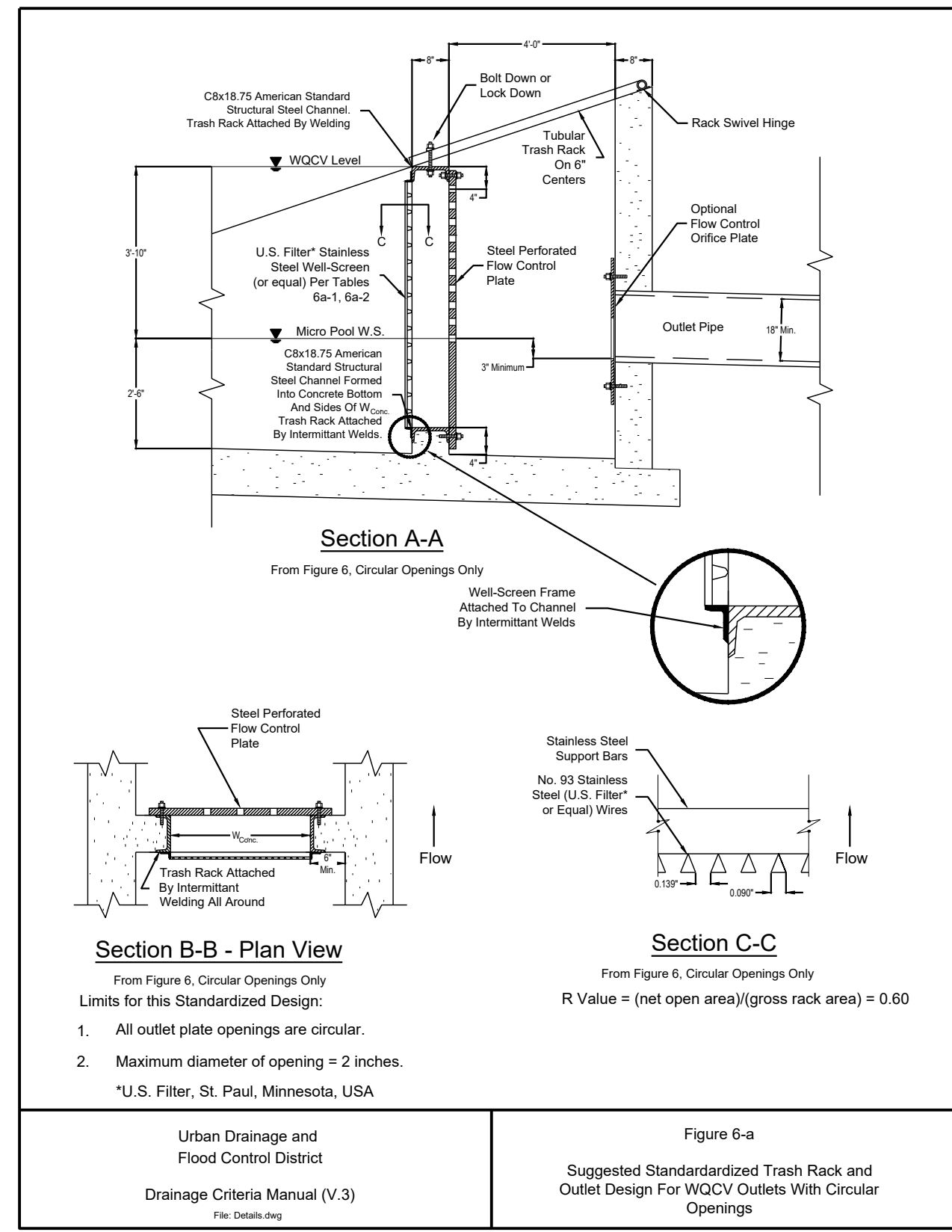
THIS AND ANY OTHER ELECTRONIC MEDIA COUNTERPART IS AN INSTRUMENT OF SERVICE PREPARED BY MERRICK AND COMPANY FOR A DEFINED PROJECT. IT IS NOT INTENDED OR REPRESENTED TO BE SUBSTITUTED FOR THE ORIGINAL INSTRUMENT OF SERVICE OR ANY OTHER INSTRUMENT OF SERVICE. MERRICK AND COMPANY SHALL BE AT THE SOLE RISK FOR THE UNAUTHORIZED USER WITHOUT LIABILITY TO MERRICK AND COMPANY.

File Location: Q:\DENProjects\0389-00 Mountain View Academy\Design\CDs\Civil\Phase II\on-site\RAINAGE DETAILS.dwg Plot Date: 2/7/2020 5:25 PM Last Saved By: FFAYNE



BAR DESCRIPTION AND LOCATION IN STRUCTURE	CONCRETE STRENGTH psi	BAR SIZE LAP CLASS	#4		#5		#6	
			A	B	A	B	A	B
BAR WITH SPACING > 2" db CLEAR COVER > db OR BEAM & COLUMN BARS WITH SPACING > db CLEAR COVER > DB	4500	TOP	2'-0"	2'-7"	2'-4"	3'-2"	2'-11"	3'-10"
		BOTTOM	1'-6"	2'-0"	1'-11"	2'-8"	2'-3"	2'-11"
OTHER CASES	4500	TOP	2'-11"	3'-10"	3'-8"	4'-0"	4'-9"	4'-9"
		BOTTOM	2'-3"	2'-11"	2'-10"	3'-8"	3'-9"	4'-5"

- NOTES:**
- USE THIS TABLE FOR BAR SPLICES UNLESS SPECIFICALLY DETAILED AND DIMENSIONED ON PLANS.
  - FOR TENSION DEVELOPMENT LENGTHS "Ld", USE CLASS "B" SPLICE LENGTHS.
  - ALL SPLICES SHALL BE CLASS "B" UNLESS NOTED OTHERWISE ON PLANS.
  - TOP BARS ARE HORIZONTAL REINFORCEMENT WITH MORE THAN 12" OF CONCRETE CAST BELOW BAR.
  - BOTTOM BARS ARE ALL VERTICAL BARS, ALL HORIZONTAL WALL REINFORCEMENT, AND HORIZONTAL REINFORCEMENT WITH LESS THAN 12" OF CONCRETE CAST BELOW BAR.
  - COVER DESIGNATES CLEAR CONCRETE COVER FROM SPLICED BAR TO FACE OF MEMBER, SPACING DESIGNATES CLEAR DIMENSION BETWEEN SPLICED BARS.
  - STAGGER CONTINUOUS FOOTING BOTTOM SPLICES AT LEAST 6'-0" FROM SPLICES IN OTHER BOTTOM REINFORCEMENT; STAGGER SPLICES FOR TOP REINFORCEMENT SIMILARLY.



Urban Drainage and Flood Control District Drainage Criteria Manual (V.3) File: Details.dwg	Figure 4 Orifice Details for Draining WQCV	Urban Drainage and Flood Control District Drainage Criteria Manual (V.3) File: Details.dwg	Figure 6 Suggested Standardized Trash Rack Design
--	---	--	--



**MERRICK**  
Engineering / Architecture / Design-Build / Surveying / Planning / Geospatial Solutions  
5970 GREENWOOD PLAZA BLVD. GREENWOOD VILLAGE, CO. 80111  
303-751-0741  
www.merrick.com

**NATIONAL HERITAGE ACADEMIES**

**MOUNTAIN VIEW ACADEMY**  
CIVIL CONSTRUCTION DOCUMENTS  
DRAINAGE DETAILS

DATE: 02/07/2020  
SHEET: C3.6  
15 of 20

REV. REVISION DESCRIPTION DATE

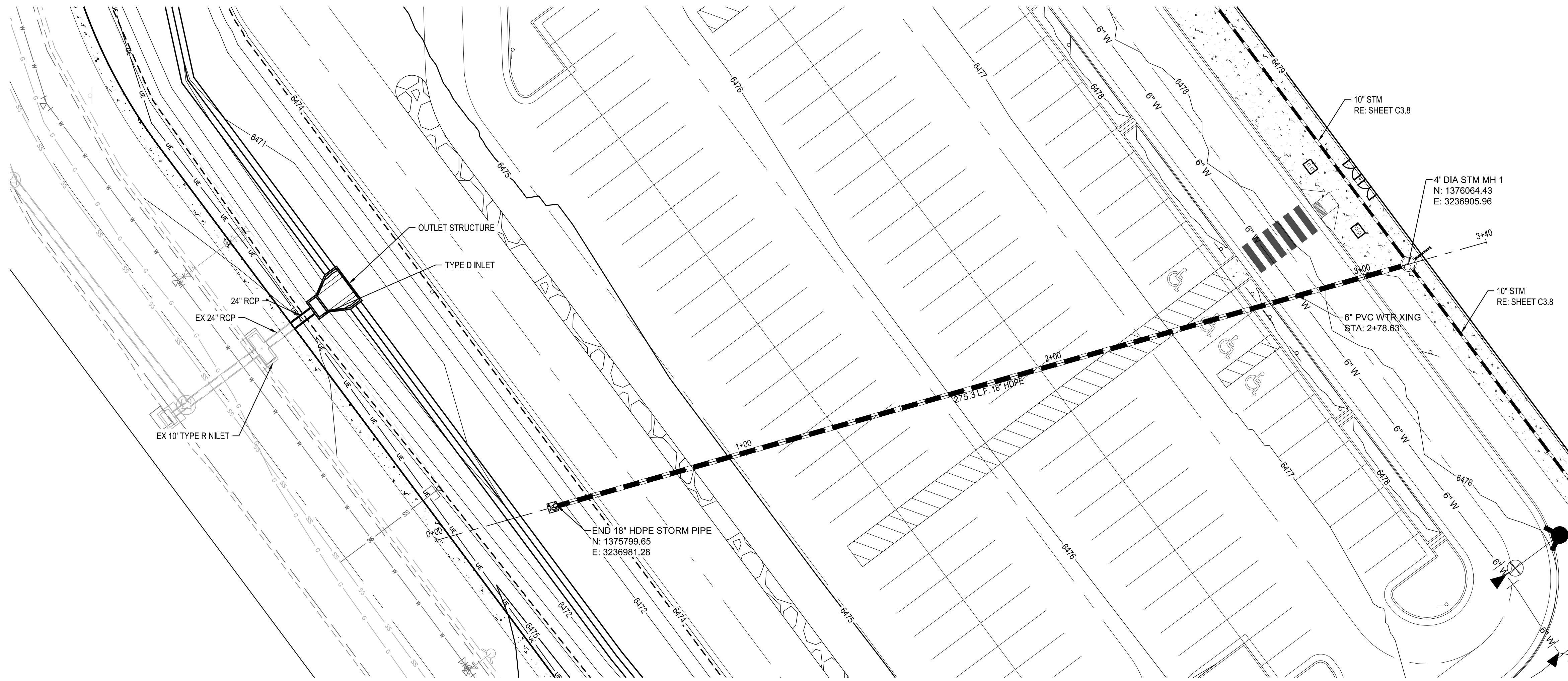
ISSUED FOR REVIEW

FOR AND ON BEHALF OF MERRICK & COMPANY

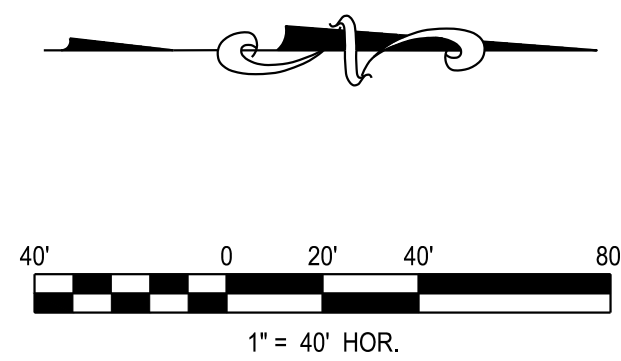
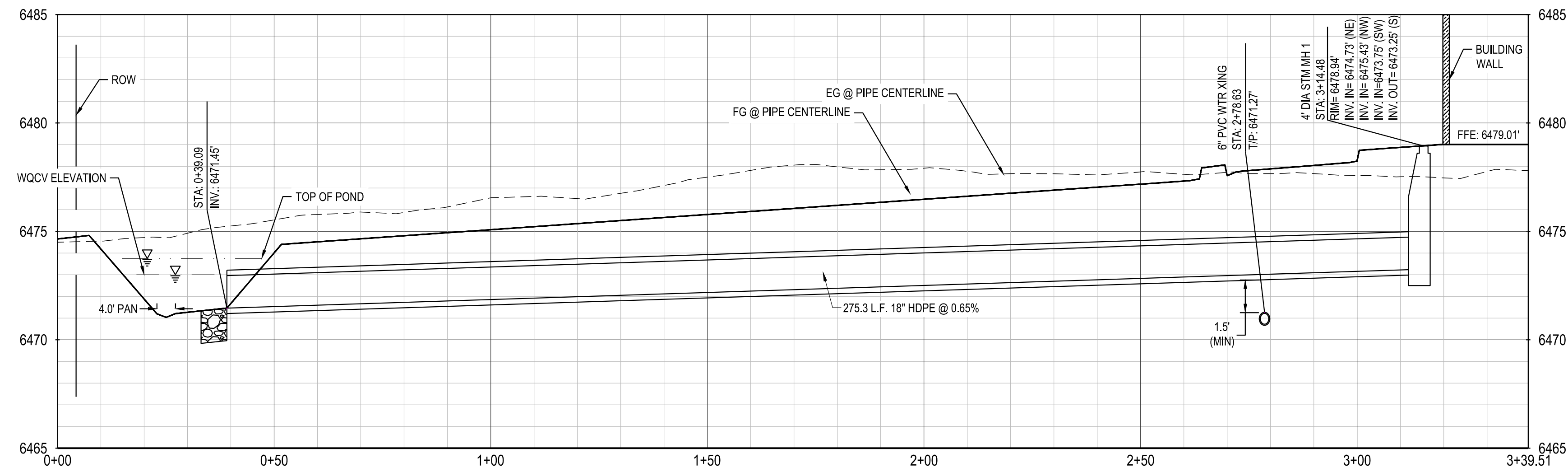


THIS AND ANY OTHER ELECTRONIC MEDIA REPRESENTS AN INSTRUMENT OF SERVICE PREPARED BY MERRICK AND COMPANY FOR A DEFINED PROJECT. IT IS NOT INTENDED OR REPRESENTED TO BE SUITABLE FOR REUSE IN WHOLE OR IN PART ON EXTENSIONS OF THE PROJECT OR ON ANY OTHER PROJECT. MERRICK AND COMPANY SHALL BE AT THE SOLE RISK FOR THE UNAUTHORIZED USER WITHOUT LIABILITY TO MERRICK AND COMPANY.

File Location: Q:\DENProjects\0389-00 Mountain View Academy\Design\CDS\Civil\Phase II\on-site\STORM PP.dwg Pklt Date: 2/7/2020 5:25 PM Last Saved By: FFAYNE



STORM



REV	REVISION DESCRIPTION	DATE	CHKD	APPD

MOUNTAIN VIEW ACADEMY  
CIVIL CONSTRUCTION DOCUMENTS  
STORM PLAN AND PROFILE

ISSUED FOR REVIEW

JOB NUMBER: 65120399  
DATE: 02/07/2020  
SHEET: C3.7  
16 of 20







