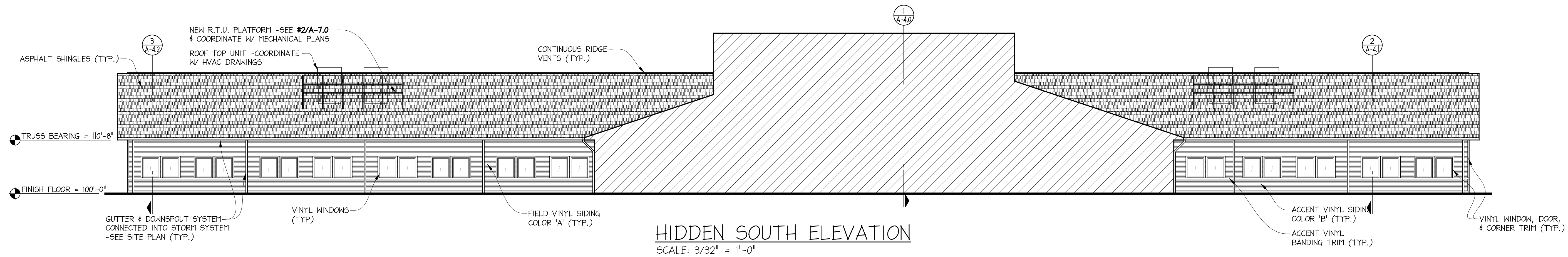
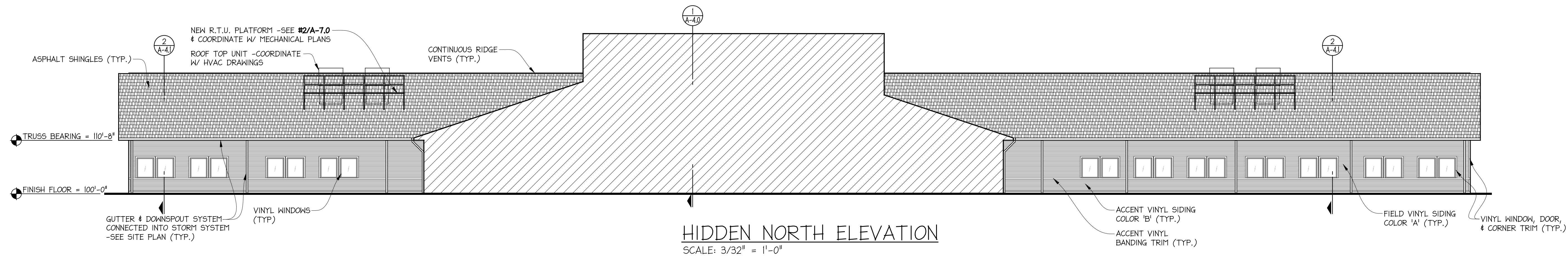


EXTERIOR MATERIAL SCHEDULE (NOTE: COLORS FOR PRICING PURPOSES - SUBMIT SAMPLES FOR OWNER APPROVAL.)

- CULTURED STONE: T.B.D. WITH COLORED MORTAR: T.B.D.
- CULTURED STONE WATER TABLE: T.B.D.
- ALUMINUM FASCIA: "PETERSEN ALUM. CO." FLUSH PANEL -COLOR: T.B.D.
- SOFFIT: "PETERSEN ALUM. CO. PAC -850" -COLOR: T.B.D.
- ENTRY STOREFRONT: -COLOR: T.B.D.
- STOREFRONT WINDOWS: "KAWNEER" TRI-FAB 451T THERMALLY BROKEN ACCENT COLORED FLUOROPAN ALUMINUM FRAME W/ TEMPERED INSULATED LOW 'E' GLASS
A. STOREFRONT FRAME COLOR: T.B.D.
- HOLLOW METAL DOORS & FRAMES - COLOR: T.B.D.
- METAL COPING: -COLOR: T.B.D.
- SOFFIT & FASCIA: COLOR T.B.D.
- VINYL SIDING: "GEORGIA PACIFIC PLYGEM" OR EQUAL
A. FIELD COLOR: 'A' T.B.D.
B. ACCENT COLOR: 'B' T.B.D.
C. ACCENT VINYL BANDING TRIM: T.B.D.
D. WINDOW, DOOR, & CORNER VINYL TRIM: T.B.D.
- VINYL WINDOWS: -COLOR: T.B.D.
- GUTTERS & DOWNSPOUT: ALUMINUM -COLOR: T.B.D.
- EXPANSION CAULK: T.B.D.
- STANDING SEAM METAL ROOF -COLOR: T.B.D.
- SHINGLES: T.B.D.
- HEAVY TIMBER: T.B.D.



HIDDEN SOUTH ELEVATION
SCALE: 3/32" = 1'-0"



HIDDEN NORTH ELEVATION
SCALE: 3/32" = 1'-0"

EXTERIOR MATERIAL SCHEDULE
(NOTE: COLORS FOR PRICING PURPOSES - SUBMIT SAMPLES FOR OWNER APPROVAL.)

- CULTURED STONE: T.B.D. WITH COLORED MORTAR: T.B.D.
- CULTURED STONE WATER TABLE: T.B.D.
- ALUMINUM FASCIA: "PETERSEN ALUM. CO." FLUSH PANEL -COLOR: T.B.D.
- SOFFIT: "PETERSEN ALUM. CO. PAC -850" -COLOR: T.B.D.
- ENTRY STOREFRONT: -COLOR: T.B.D.
- STOREFRONT WINDOWS: "KAWNEER" TRI-FAB 461T THERMALLY BROKEN ACCENT COLORED FLUOROPAN ALUMINUM FRAME W/ TEMPERED INSULATED LOW 'E' GLASS
A. STOREFRONT FRAME COLOR: T.B.D.
- HOLLOW METAL DOORS & FRAMES - COLOR: T.B.D.
- METAL COPING: -COLOR: T.B.D.
- SOFFIT & FASCIA: COLOR T.B.D.
- VINYL SIDING: "GEORGIA PACIFIC PLYGEM" OR EQUAL
A. FIELD COLOR 'A': T.B.D.
B. ACCENT COLOR 'B': T.B.D.
C. ACCENT VINYL BANDING TRIM: T.B.D.
D. WINDOW, DOOR, & CORNER VINYL TRIM: T.B.D.
- VINYL WINDOWS: -COLOR: T.B.D.
- GUTTERS & DOWNSPOUT: ALUMINUM -COLOR: T.B.D.
- EXPANSION CAULK: T.B.D.
- STANDING SEAM METAL ROOF -COLOR: T.B.D.
- SHINGLES: T.B.D.
- HEAVY TIMBER: T.B.D.

NATIONAL HERITAGE ACADEMIES
MOUNTAIN VIEW ACADEMY
COLORADO SPRINGS, CO
ELEVATIONS -CONT

ANDRUS ARCHITECTURE

11629 NORTHLAND DRIVE - SUITE 200
ROCKFORD, IL 61151
PHONE: 616.863.8850
WWW.ANDRUSARCHITECTURE.COM

National Heritage Academies