



DATE: 07/12/2021
 DRAWN BY: JVA
 CHECKED BY: JVA
 JOB #: 105196
 DATE: JULY 2021
 © JVA, INC.

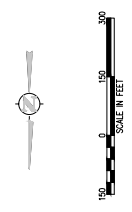
REVISION DESCRIPTION
 NO. DATE DESD DWN



DESIGNED BY: JVA
 DRAWN BY: JVA
 CHECKED BY: JVA
 JOB #: 105196
 DATE: JULY 2021
 © JVA, INC.

WOODMOOR WSD NO. 1
 LAKE PUMP STATION NO. 2 AND PIPELINE
 EL PASO COUNTY, COLORADO
 VICINITY MAP
 SHEET NO.
C0.1

NOTES:
 1. PARCELS AFFECTED BY THE PUMP STATION AND/OR THE TRANSMISSION MAIN ARE HIGHLIGHTED IN YELLOW. INFORMATION REGARDING THE TRANSMISSION MAIN AND PUMP STATION DEVELOPMENT PLAN, SUBJECT PROPERTY, AND PROPERTIES AFFECTED BY TRANSMISSION PIPELINE TABLES BELOW EACH CLARITY LEGAL DESCRIPTION ARE ATTACHED FOR REFERENCE. ADJACENT PARCELS ARE SHOWN FOR REFERENCE. INFORMATION REGARDING ADJACENT PARCELS IS ATTACHED FOR REFERENCE. PROPERTIES TABLES BELOW EACH ADJACENT PARCEL IS ASSIGNED A REFERENCE NUMBER FOR CLARITY.



REFERENCE NUMBER	PARCEL NUMBER	PARCEL OWNER	ZONING DESIGNATION	LAND USE
18	711420016	THACK CRAND	PUD	SINGLE FAMILY RES
17	711420017	HARRIS NATHAN P	PUD	SINGLE FAMILY RES
16	711420018	CLORA JOHN JR	PUD	SINGLE FAMILY RES
15	711420019	ELBERT DAN R	PUD	SINGLE FAMILY RES
14	711420020	WAXTON-SMITH DAVID	PUD	SINGLE FAMILY RES
21	711420021	JONES DANIEL GIBSON	PUD	VACANT RESIDENTIAL LOTS
22	711420022	SARGENT GREGORY LEE	PUD	SINGLE FAMILY RES
23	711420023	WAGNER GREGORY LEE	PUD	POLITICAL SUBDIVISION
24	711420024	BEACH AT WOODMOOR HOA	PUD	HOMEOWNERS ASSOCIATION
25	711420025	BEACH AT WOODMOOR HOA	PUD	HOMEOWNERS ASSOCIATION
26	711420026	CAMPBELL HOMES LLC	PUD	SINGLE FAMILY RES
27	711420027	CASEY JEFFREY S	PUD	SINGLE FAMILY RES
28	711420028	KANDAS GARY E JR	PUD	SINGLE FAMILY RES
29	711420029	MAGILL ROBERT T	PUD	SINGLE FAMILY RES

REFERENCE NUMBER	PARCEL NUMBER	PARCEL OWNER	ZONING DESIGNATION	LAND USE
1	711420009	REINER FAMILY TRUST	CC	SPECIAL PURPOSE
2	711420010	THE-JONES CAROL INC	R-4	RELIGIOUS WORSHIP
3	711420011	WOODMOOR DARDENESS ASSN INC	R-4	HOMEOWNERS ASSOCIATION
4	711420012	WOODMOOR WATER & SANITATION	RR-5	POLITICAL SUBDIVISION
5	711420013	WILAGE AT WOOD-MOOD OWNERS ASSN	R-4	HOMEOWNERS ASSOCIATION
6	711420014	TANIG LLC	CC	RECREATION
7	711420015	DUNES AT WOODMOOR HOMEOWNERS ASSN	R-4, PUD	HOMEOWNERS ASSOCIATION
8	711420016	DUNES AT WOODMOOR HOMEOWNERS ASSN	R-4, PUD	HOMEOWNERS ASSOCIATION
9	711420017	DUNES AT WOODMOOR HOMEOWNERS ASSN	R-4, PUD	HOMEOWNERS ASSOCIATION
10	711420018	DUNES AT WOODMOOR HOMEOWNERS ASSN	PUD	HOMEOWNERS ASSOCIATION
11	711420019	FORRESTAL JEFFREY	PUD	SINGLE FAMILY RES
12	711420020	LARRAZA ERIC	PUD	SINGLE FAMILY RES
13	711420021	MATEVA MELISSA	PUD	SINGLE FAMILY RES
14	711420022	TRENDE EWA K	PUD	SINGLE FAMILY RES
15	711420023	MCCOY ALBERT C	PUD	SINGLE FAMILY RES

REFERENCE LETTER	PARCEL NUMBER	ADDRESS	PARCEL OWNER	ZONING DESIGNATION	LAND USE	PARCEL SIZE (AC)
A	711420008	1596 LAKE WOODMOOR DRIVE	WOODMOOR WATER & SANITATION	R-4	PLANNED DEVELOPMENT	43.19

REFERENCE LETTER	PARCEL NUMBER	ADDRESS	PARCEL OWNER	ZONING DESIGNATION	LAND USE	PARCEL SIZE (AC)
B	711420014	1592 LAKE WOODMOOR DRIVE	BEACH AT WOODMOOR HOA	PUD	HOMEOWNERS ASSOCIATION	0.66
C	711420022	1640 LAKE WOODMOOR DRIVE	CS LAND COMPANY LLC	PUD	VACANT COMMERCIAL LOTS	1.20
D	711420021	1680 LAKE WOODMOOR DRIVE	CS LAND COMPANY LLC	PUD	VACANT COMMERCIAL LOTS	1.34
E	711420041	1754 WILLOW PARKWAY	LENS PALMER SCHOOL SANITATION	C-2, RR-5	POLITICAL SUBDIVISION	4.68
F	711420020	1754 WILLOW PARKWAY	DUNES AT WOODMOOR HOA	PUD	HOMEOWNERS ASSOCIATION	2.62
G	711420014	1776 WOODMOOR DRIVE	WOODMOOR WATER & SANITATION	RR-5	POLITICAL SUBDIVISION	21.60
H	711420015	1765 DEER CREEK ROAD	WOODMOOR WATER & SANITATION	I-2	POLITICAL SUBDIVISION	2.32

EPC 7/12/2021



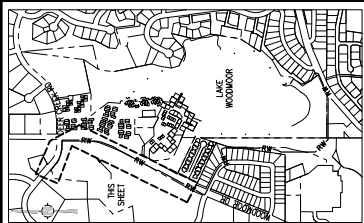
NO. DATE DESD D.W.N.
 REVISION DESCRIPTION

NO.	DATE	DESD	D.W.N.	REVISION DESCRIPTION

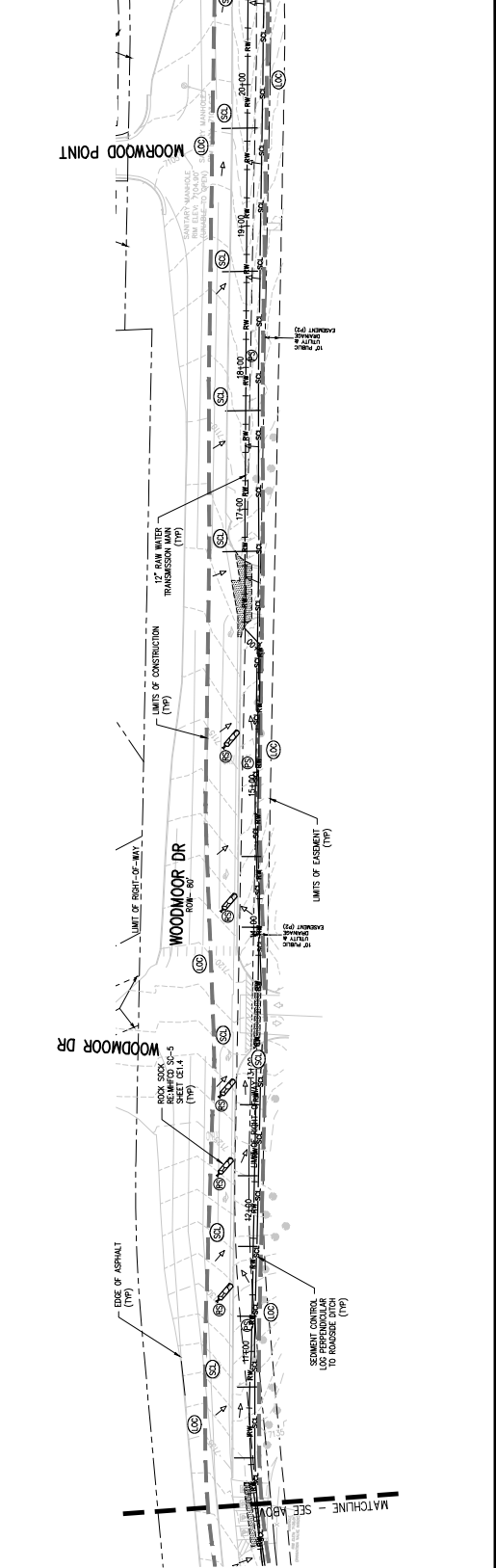
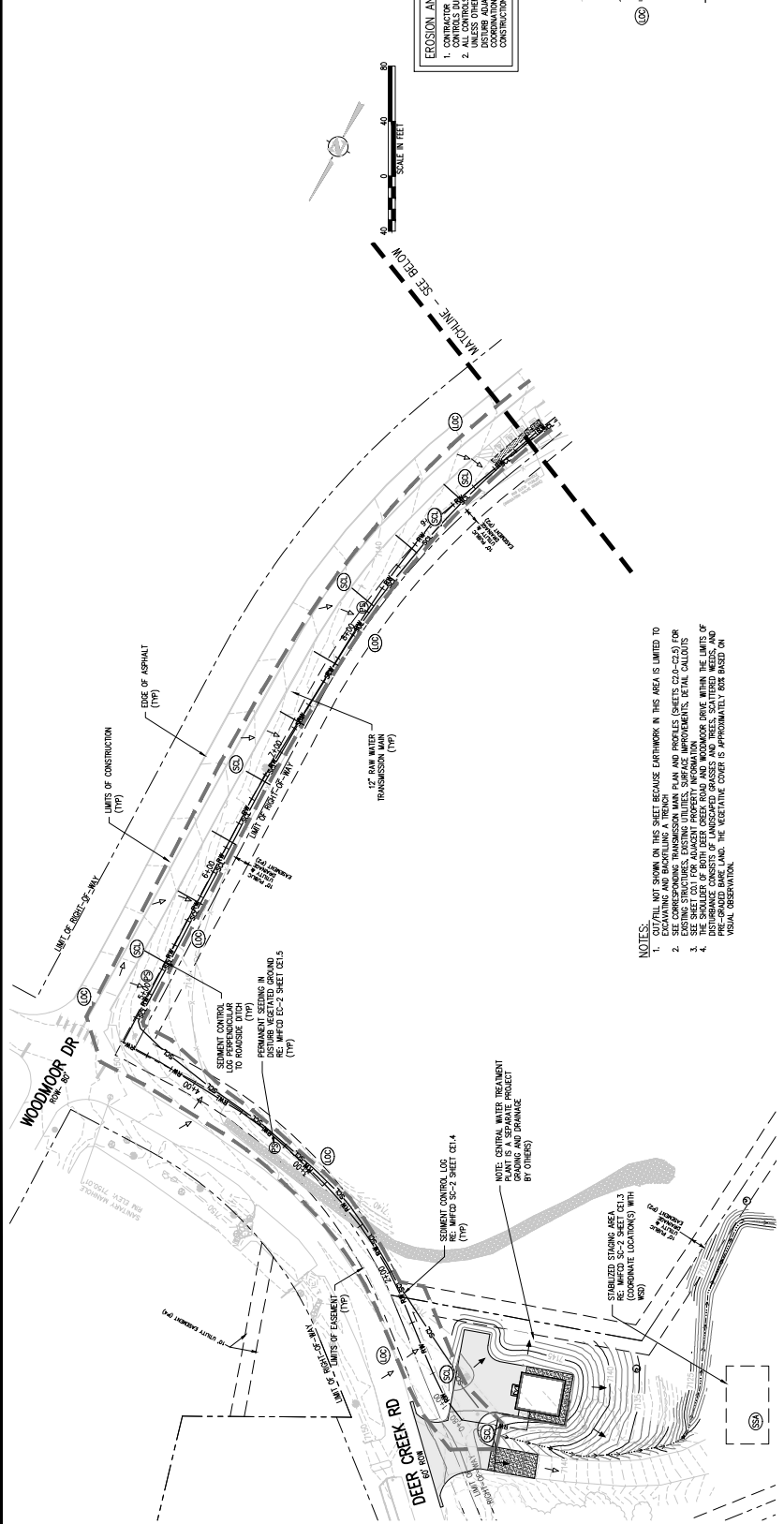
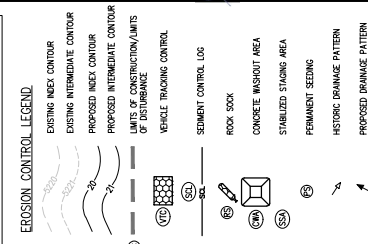


DESIGNED BY: PROJECT #
 DRAWN BY: SHEET #
 CHECKED BY: JIM
 JOB # 10526A
 DATE: JULY 2021
 © JVA, INC.

WOODMOOR WSD NO.1
 LAKE PUMP STATION NO. 2 AND PIPELINE
 EL PASO COUNTY, COLORADO
 EROSION CONTROL PLAN
 SHEET NO. CE1.0



EROSION AND SEDIMENTATION NOTES:
 1. CONTRACTOR IS RESPONSIBLE FOR INSTALLING AND MAINTAINING ALL CONTROLS SURROUNDING THE INTERNAL AND FINAL CONDITIONS UNLESS OTHERWISE SPECIFIED. WHEN CONSTRUCTION ACTIVITIES ARE COMPLETED, THE CONTRACTOR SHALL RESTORE ALL AREAS TO CONFORMANCE WITH PROPERTY RECORDS IS REQUIRED PRIOR TO CONSTRUCTION.





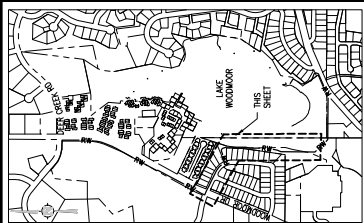
DESIGNED BY: JVA, INC.
 DRAWN BY: JVA, INC.
 CHECKED BY: JVA, INC.
 DATE: JULY 2021

NO.	DATE	DESC	DWN



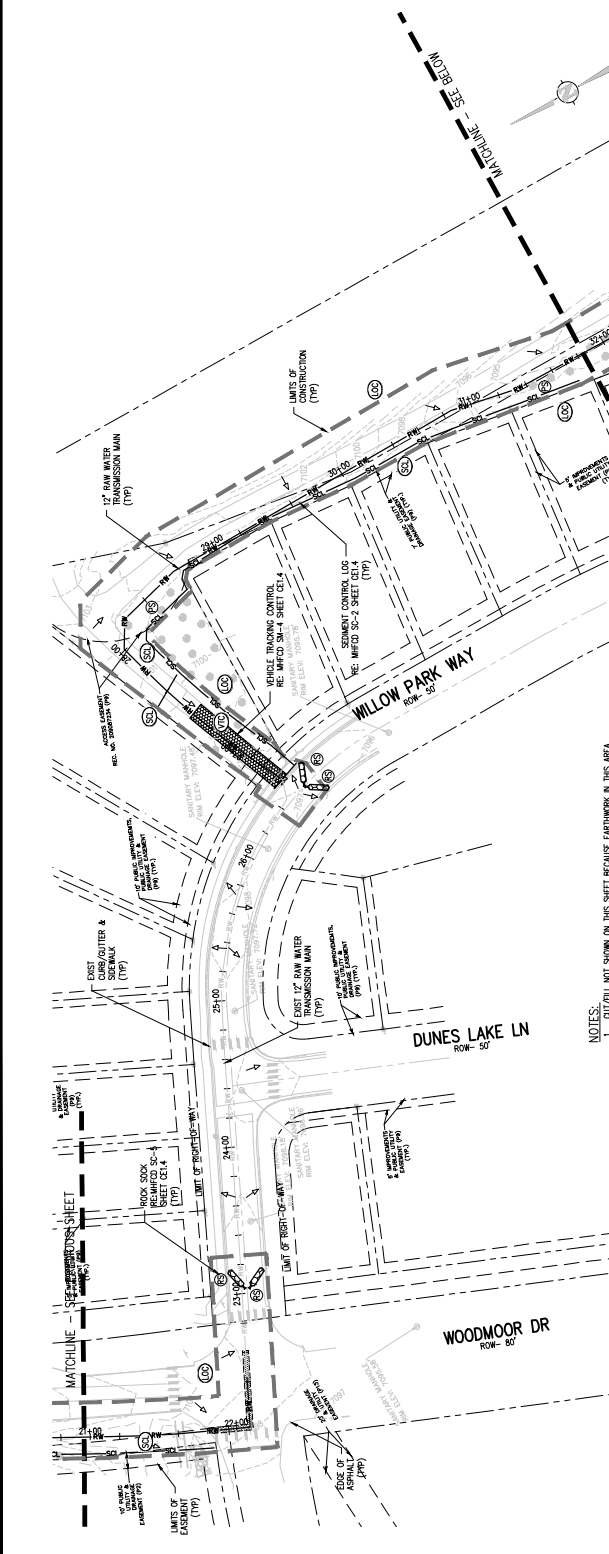
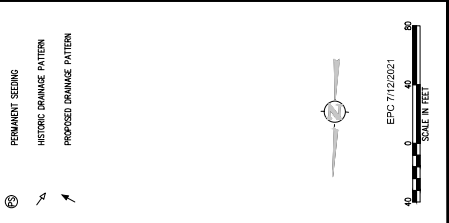
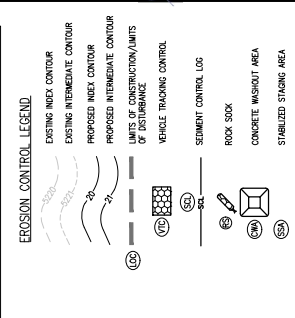
WOODMOOR WSD NO. 1
 LAKE PUMP STATION NO. 2 AND PIPELINE
 EL PASO COUNTY, COLORADO

SHEET NO.
CE1.1



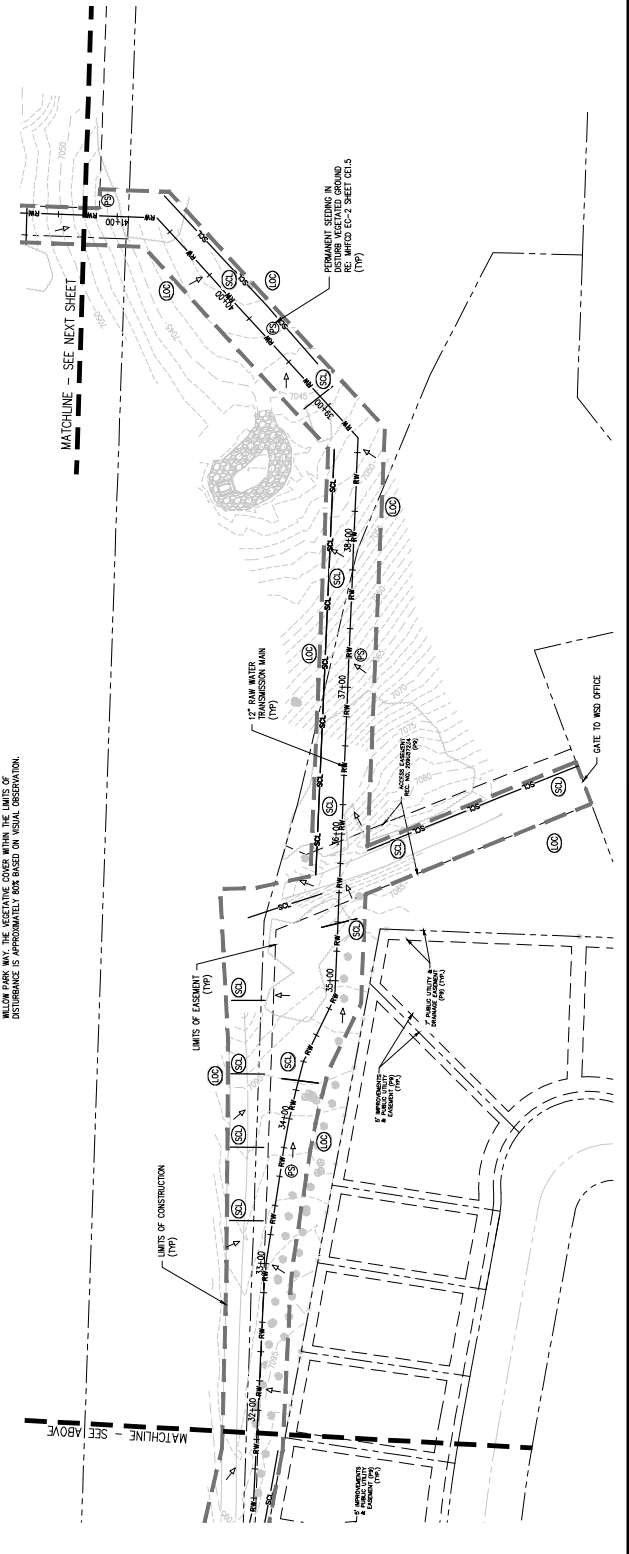
EROSION AND SEDIMENTATION NOTES:

1. ALL EROSION AND SEDIMENTATION CONTROLS SHALL BE INSTALLED WITHIN THE PROPERTY LINES AND SHALL BE MAINTAINED THROUGHOUT CONSTRUCTION.
2. ALL CONTROLS SHALL BE INSTALLED WITHIN THE PROPERTY LINES AND SHALL BE MAINTAINED THROUGHOUT CONSTRUCTION.
3. DISTURBANCE ADJACENT AND/OR RIGHT-OF-WAY PROPERTIES COORDINATION WITH PROPERTY OWNERS IS REQUIRED PRIOR TO CONSTRUCTION.



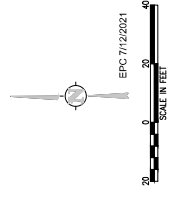
NOTES:

1. OUTFALL NOT SHOWN ON THIS SHEET BECAUSE EARTHWORK IN THIS AREA IS LIMITED TO EXCAVATING AND BACKFILLING A TRENCH.
2. SEE SHEET CE1.2 FOR EXISTING STRUCTURES, EXISTING UTILITIES, SURFACE IMPROVEMENTS, DETAIL CALLOUTS.
3. SEE SHEET CE1.3 FOR EXISTING STRUCTURES, EXISTING UTILITIES, SURFACE IMPROVEMENTS, DETAIL CALLOUTS.
4. THE SHOULDER OF WOODMOOR DRIVE WITHIN THE LIMITS OF DISTURBANCE SHALL BE MAINTAINED THROUGHOUT CONSTRUCTION. THE SHOULDER SHALL BE MAINTAINED WITHIN THE LIMITS OF DISTURBANCE ADJACENT TO THE LAKE'S DAM TO CONSIST OF NATIVE GRASSES AND TREES AND GRASSES. THE SHOULDER SHALL BE MAINTAINED WITHIN THE LIMITS OF DISTURBANCE ADJACENT TO THE LAKE'S DAM TO CONSIST OF NATIVE GRASSES AND TREES AND GRASSES. DISTURBANCE SHALL BE MAINTAINED WITHIN THE LIMITS OF DISTURBANCE ADJACENT TO THE LAKE'S DAM TO CONSIST OF NATIVE GRASSES AND TREES AND GRASSES. DISTURBANCE IS APPROXIMATELY 500 FEET ON VISUAL OBSERVATION.



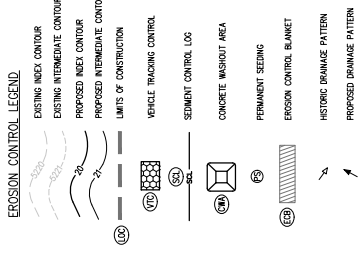


NO.	DATE	DESC.	DWN.
REVISION DESCRIPTION			



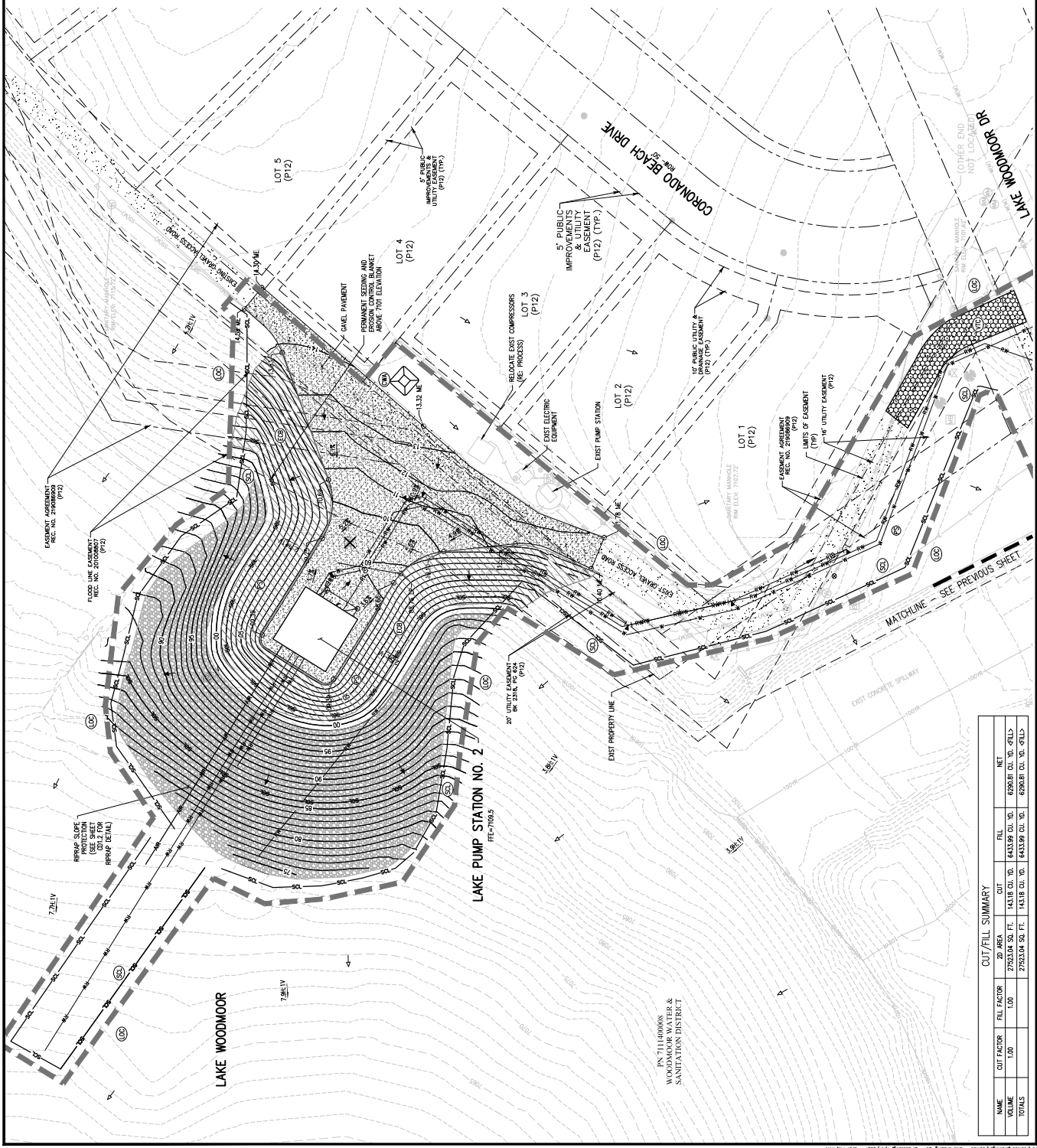
EROSION AND SEDIMENTATION NOTES:

- CONTRACTOR IS RESPONSIBLE FOR INSTALLING AND MAINTAINING ALL CONTROLS DURING INITIAL, INTERIM, AND FINAL CONDITIONS.
- CONTRACTOR SHALL MAINTAIN ALL CONTROLS IN OPERATING ORDER UNLESS OTHERWISE SPECIFIED. WHEN CONSTRUCTION ACTIVITIES DISTURB ADJACENT AND/OR RIGHT-OF-WAY PROPERTIES, THE CONTRACTOR SHALL OBTAIN WRITTEN PERMISSION FROM THE ADJACENT PROPERTY OWNERS PRIOR TO CONSTRUCTION.



NOTES:

- SEE CORRESPONDING TRANSMISSION MAIN PLAN AND PROFILES SHEETS FOR PROPOSED TRANSMISSION MAIN, EXISTING UTILITIES, SURFACE IMPROVEMENTS, DETAIL CALLOUTS.
- SEE SHEET FOR ADVANCED PROPERTY INFORMATION AND THE LIMITS OF DISTURBANCE AS WELL AS THE AREA SURROUNDING THE PROJECT. THE CONTRACTOR SHALL MAINTAIN THE VEGETATION COVER WITHIN THE LIMITS OF DISTURBANCE. THE VEGETATION COVER SHALL BE REPLACED WITHIN THE AREA ADJACENT TO THE PUMPS ON CORONADO BEACH DRIVE. THE VEGETATION SHALL BE LANDSCAPED WITH GRASSES AND TREES.



CUT/FILL SUMMARY

NAME	CUT FACTOR	FILL FACTOR	CUT	FILL	NET
20' WEA.	1.00	1.00	143.18 CU. YD.	143.18 CU. YD.	0.00
27.5' WEA.	1.00	1.00	143.18 CU. YD.	143.18 CU. YD.	0.00
TOTALS			286.36 CU. YD.	286.36 CU. YD.	0.00



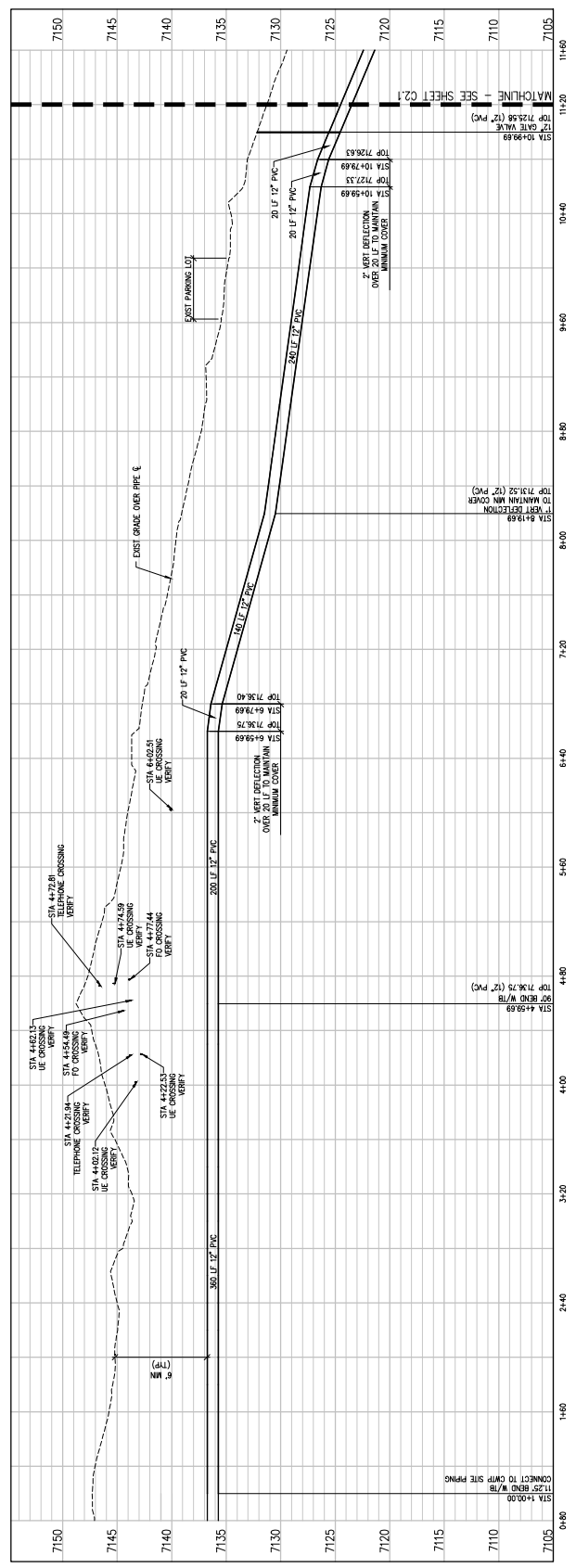
DESIGNED BY: PERMITS
DESIGNED BY: JMM
CHECKED BY: JMM
DATE: JULY 2021
© JVA, INC.

NO.	DATE	DESC	DWN

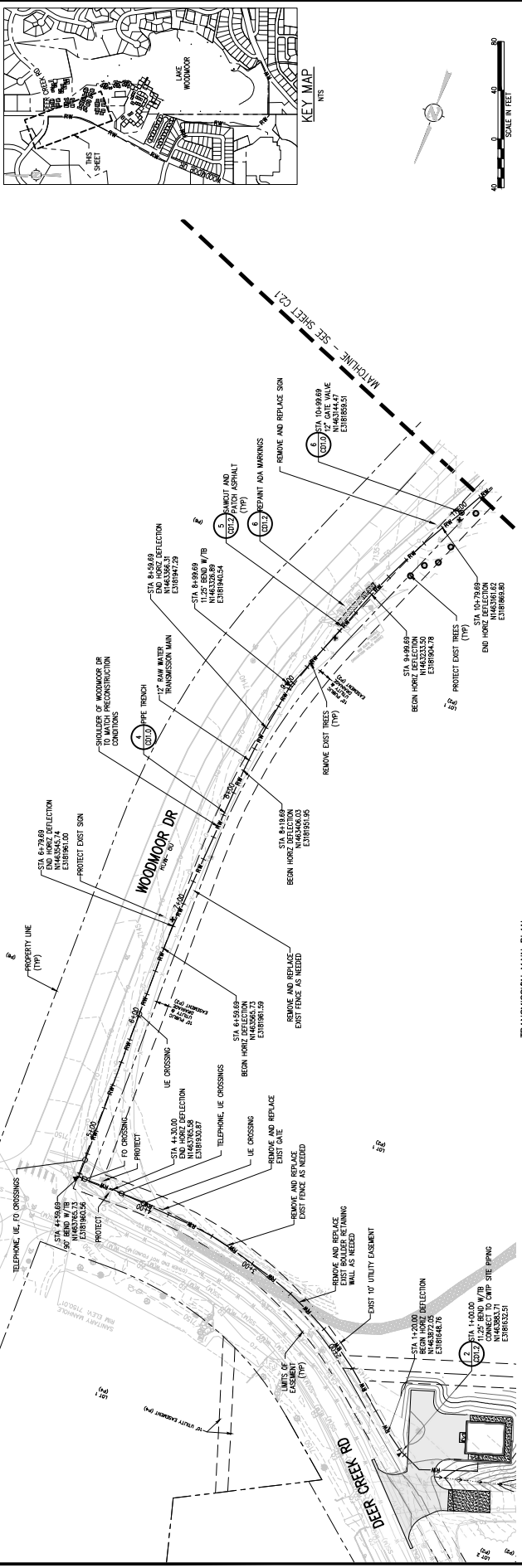


EPC 712/2021

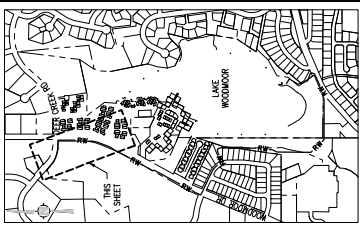
TRANSMISSION MAIN PROFILE
SCALE: 1"=40' HORIZ
1"=5' VERT



TRANSMISSION MAIN PLAN
SCALE: 1"=40'



KEY MAP
N/S





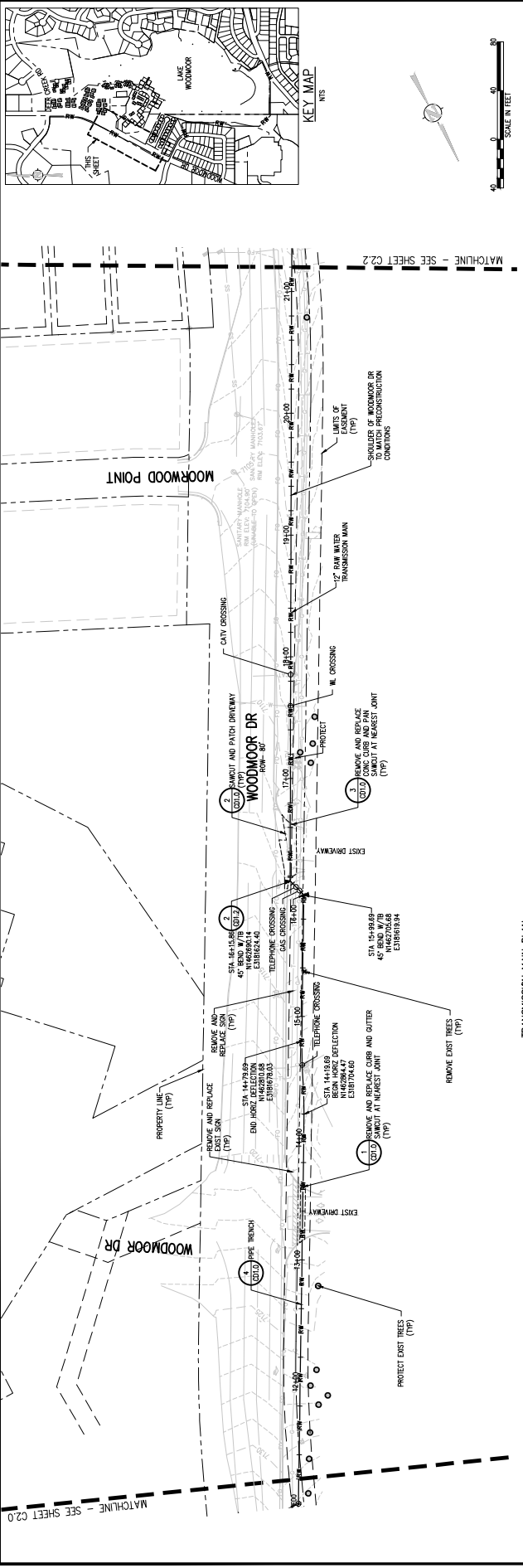
NO. DATE DESD. DWN. REVISION DESCRIPTION

DESIGNED BY	PROJ. MGT.	DATE	JULY 2021
DRAWN BY	CHKD.	CHECKED BY	JMM
JOB #	105294		
			© JVA, INC.

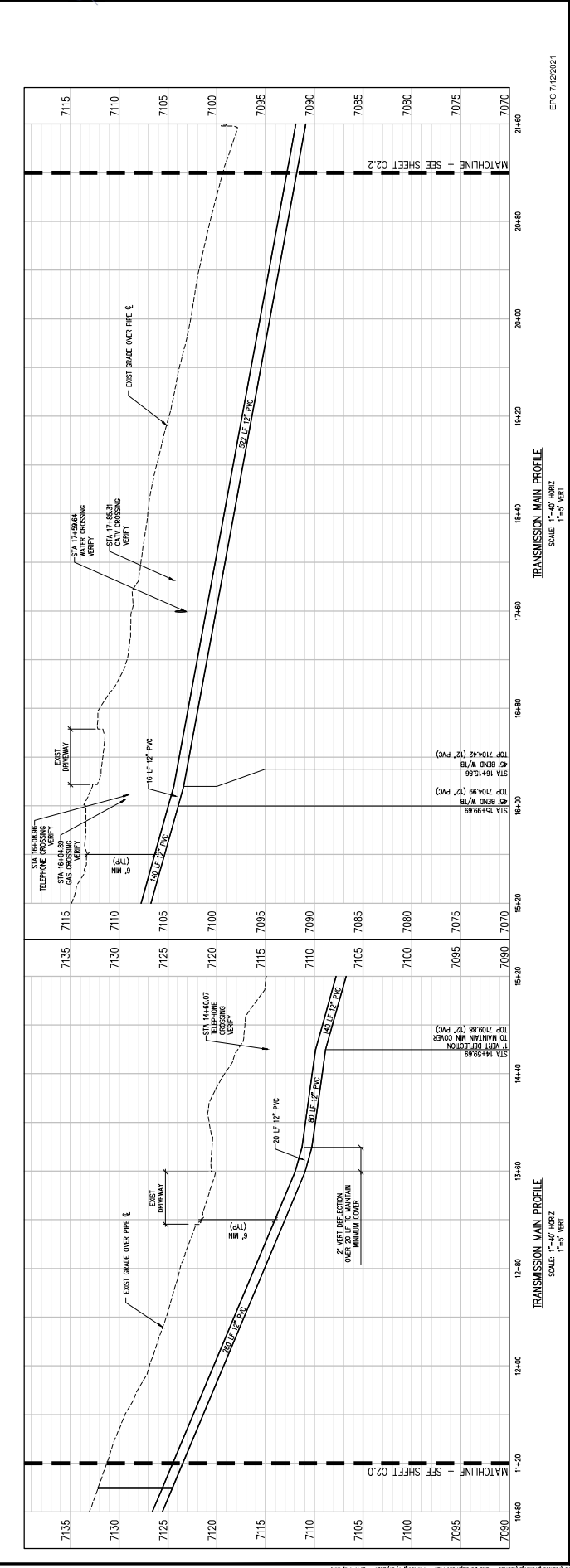


WOODMOOR WSD NO. 1
LAKE PUMP STATION NO. 2 AND PIPELINE
EL PASO COUNTY, COLORADO
TRANSMISSION MAIN PLAN AND PROFILE

SHEET NO. C2.1



TRANSMISSION MAIN PLAN
SCALE: 1"=40'



TRANSMISSION MAIN PROFILE
SCALE: 1"=4" VERT, 1"=5' HORIZ

TRANSMISSION MAIN PROFILE
SCALE: 1"=4" VERT, 1"=5' HORIZ

EPC 11/22/2021



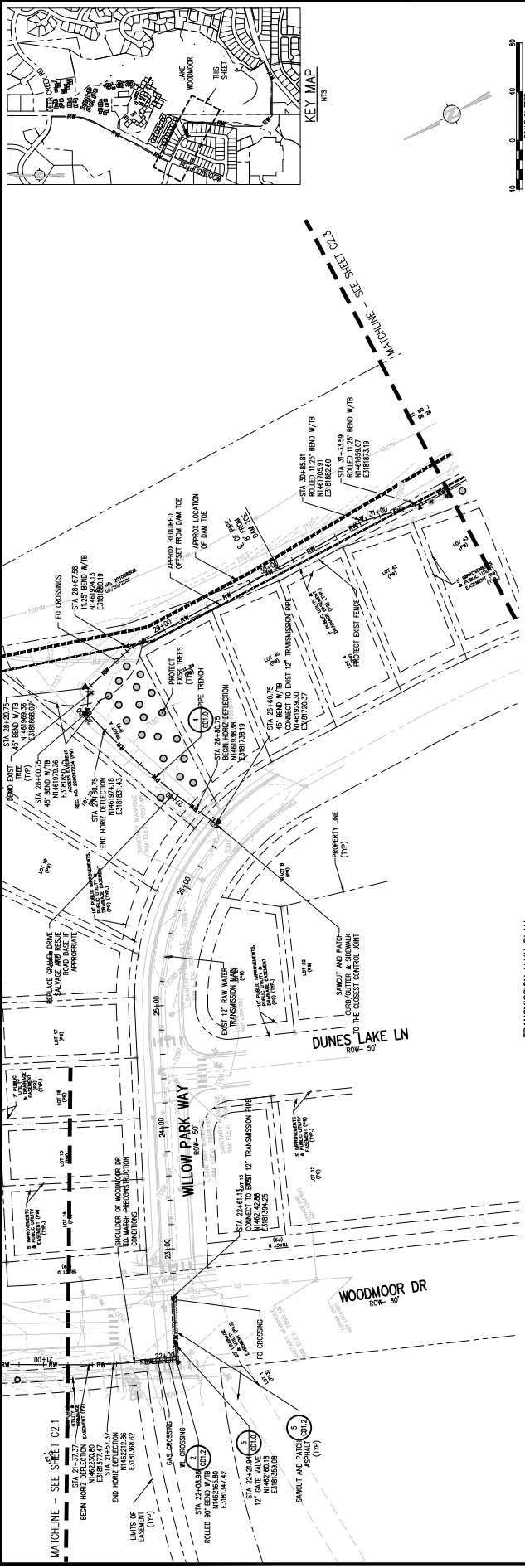
NO. DATE DESG. DWN. REVISION DESCRIPTION

NO.	DATE	DESG.	DWN.	REVISION DESCRIPTION

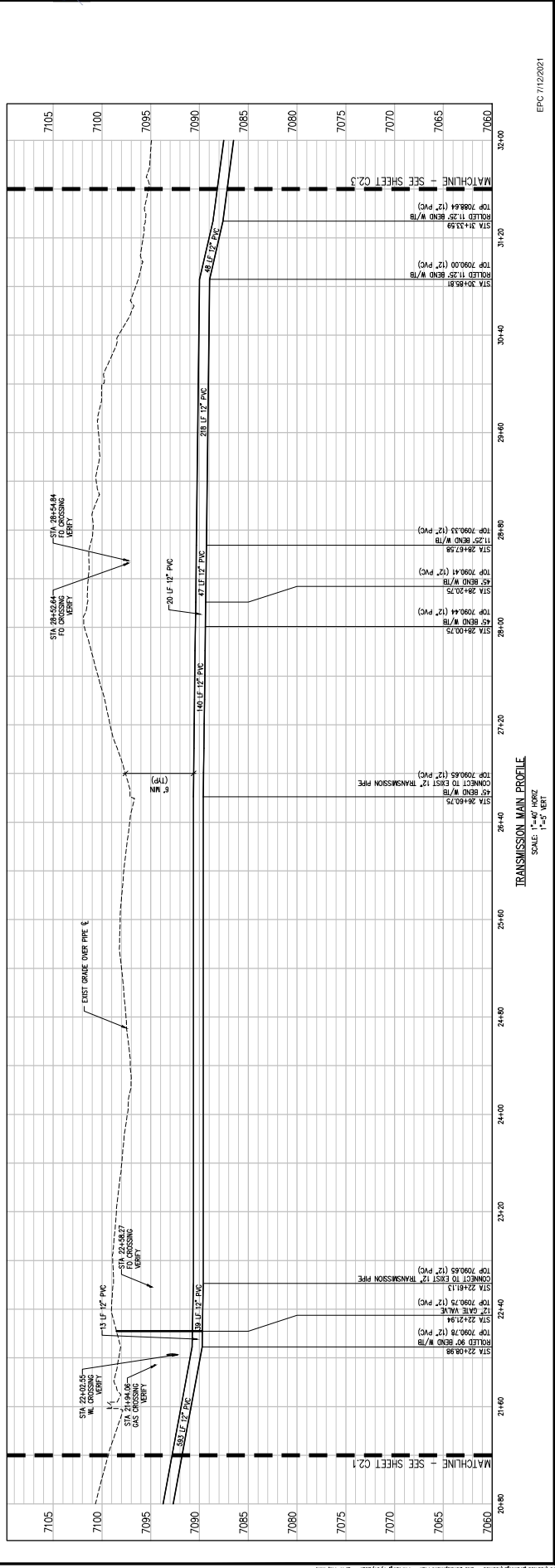
DESIGNED BY: PROJECT NO. 105296
 DRAWN BY: JVA INC. 41654
 CHECKED BY: JVA INC.
 DATE: JULY 2021
 © JVA, INC.

WOODMOOR WSD NO.1
 LAKE PUMP STATION NO. 2 AND PIPELINE
 EL PASO COUNTY, COLORADO
 TRANSMISSION MAIN PLAN AND PROFILE

SHEET NO. C2.2



TRANSMISSION MAIN PLAN
 SCALE: 1" = 40'



TRANSMISSION MAIN PROFILE
 SCALE: 1" = 40' HORIZ
 1" = 5' VERT

EPC 7/12/2021



DESIGNED BY: PM/AMT
 DRAWN BY: JMM
 CHECKED BY: JMM
 JRS # 105294
 DATE: JULY 2021
 © JVA, INC.

NO. DATE DESD DWN
 REVISION DESCRIPTION

W0000R WSD NO.1
 LAKE PUMP STATION NO. 2 AND PIPELINE
 EL PASO COUNTY, COLORADO

TRANSMISSION MAIN PLAN AND PROFILE

SHEET NO. C2.3



DESIGNED BY: PM/AMT
 DRAWN BY: JMM
 CHECKED BY: JMM
 JRS # 105294
 DATE: JULY 2021
 © JVA, INC.

W0000R WSD NO.1
 LAKE PUMP STATION NO. 2 AND PIPELINE
 EL PASO COUNTY, COLORADO

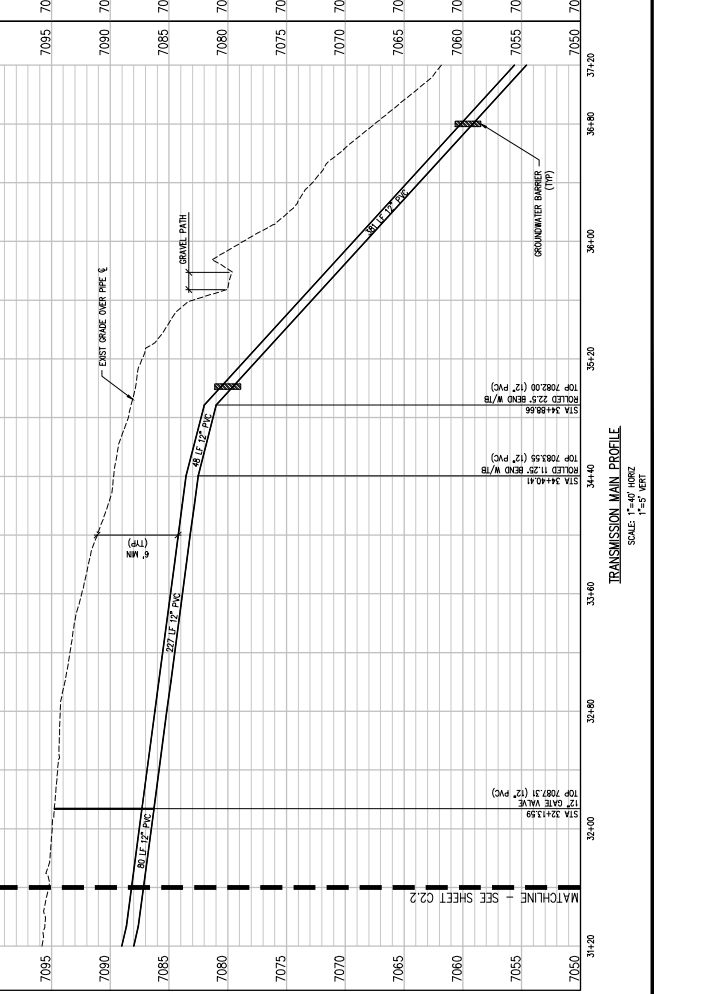
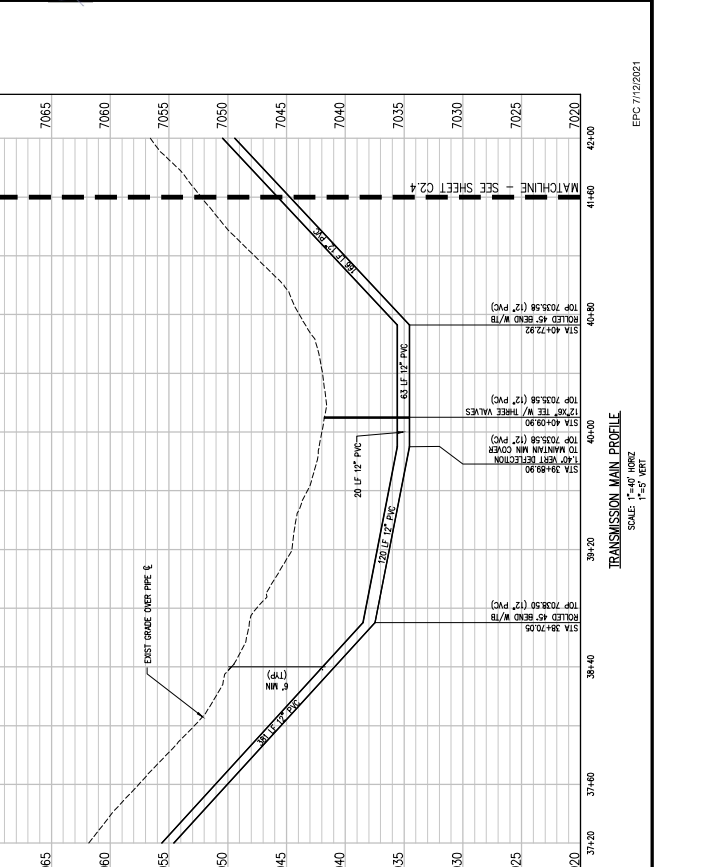
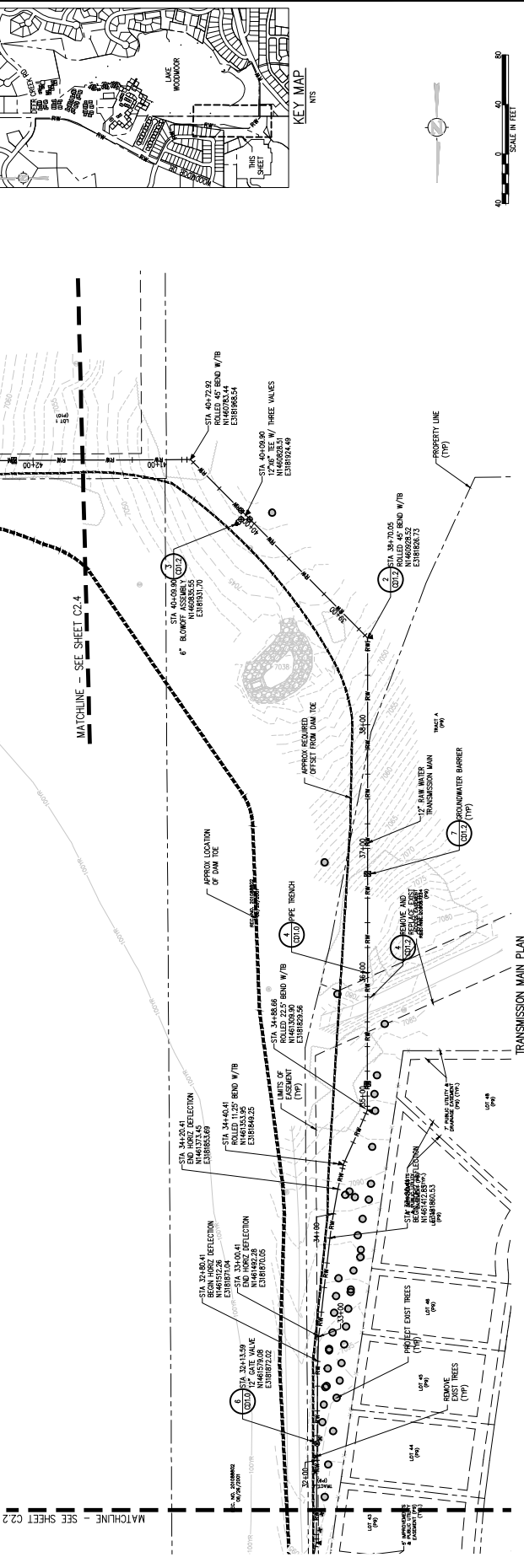
TRANSMISSION MAIN PLAN AND PROFILE

SHEET NO. C2.3



DESIGNED BY: PM/AMT
 DRAWN BY: JMM
 CHECKED BY: JMM
 JRS # 105294
 DATE: JULY 2021
 © JVA, INC.

W0000R WSD NO.1
 LAKE PUMP STATION NO. 2 AND PIPELINE
 EL PASO COUNTY, COLORADO



EPC 7/12/2021

10514\Drawings\10514a - Site Development Plan - 070421 - 24x7 Pln.dwg 7/12/2021 - 2:47 PM



DESIGNED BY: [NAME]
 DRAWN BY: [NAME]
 CHECKED BY: [NAME]
 DATE: [DATE]

NO.	DATE	DESD.	DWN.

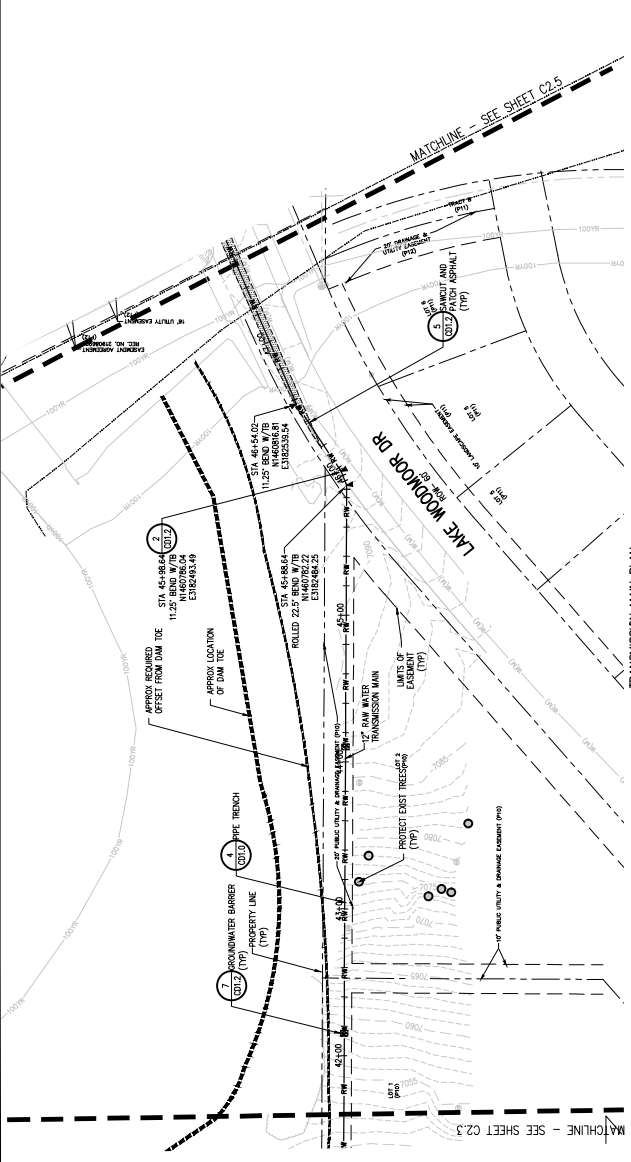
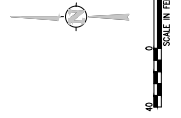
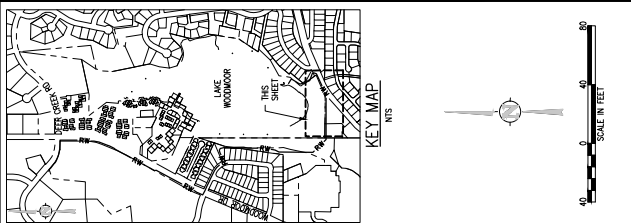


DESIGNED BY: [NAME]
 DRAWN BY: [NAME]
 CHECKED BY: [NAME]
 DATE: [DATE]

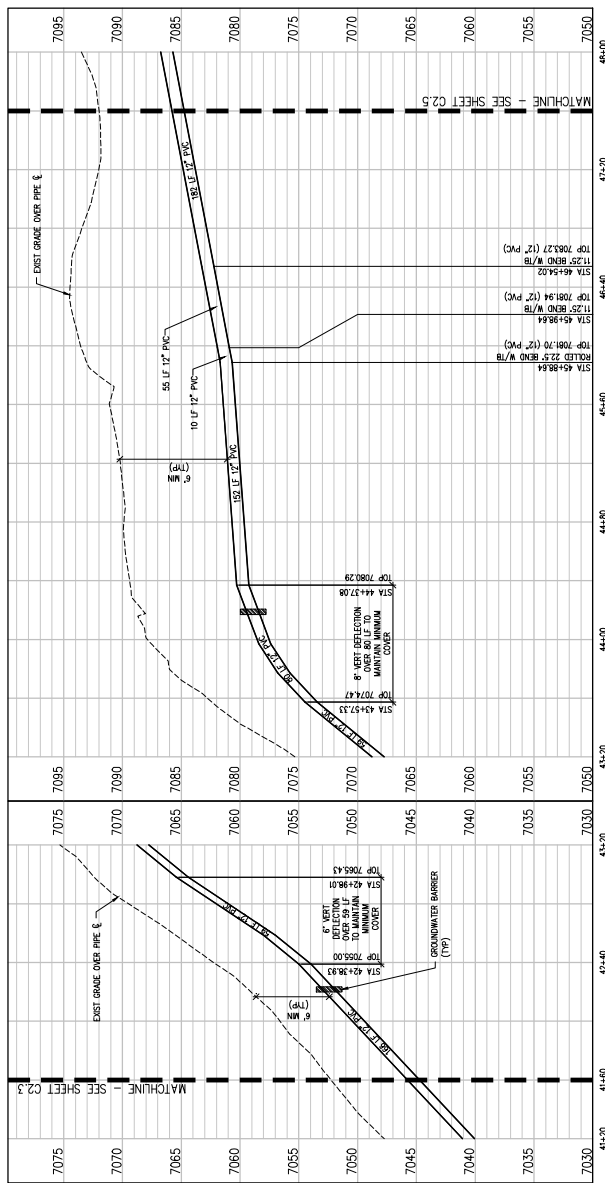
WUDDMOOR WSD NO. 1
 LAKE PUMP STATION NO. 2 AND PIPELINE
 EL PASO COUNTY, COLORADO

SHEET NO.
C2.4

EPC 7/12/2021



TRANSMISSION MAIN PLAN
 SCALE: 1" = 40'



TRANSMISSION MAIN PROFILE
 SCALE: 1" = 40' HORIZ
 1" = 5' VERT

TRANSMISSION MAIN PROFILE
 SCALE: 1" = 40' HORIZ
 1" = 5' VERT

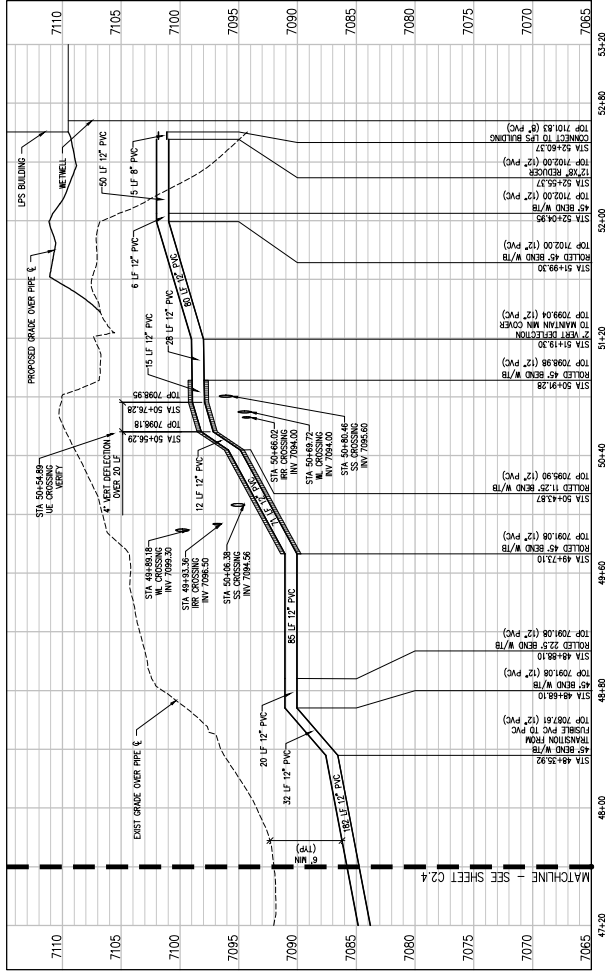
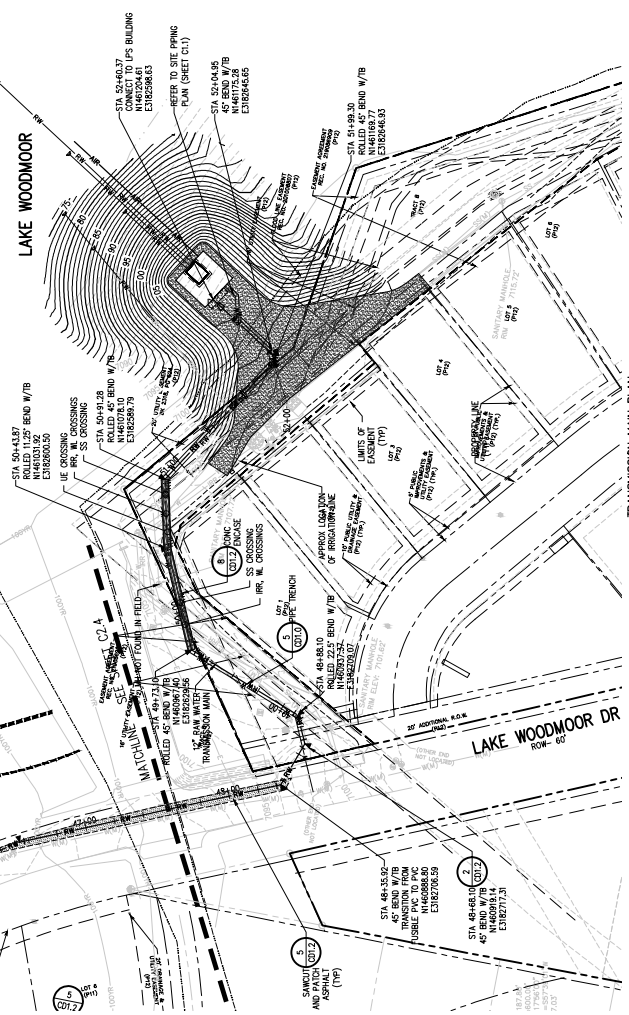
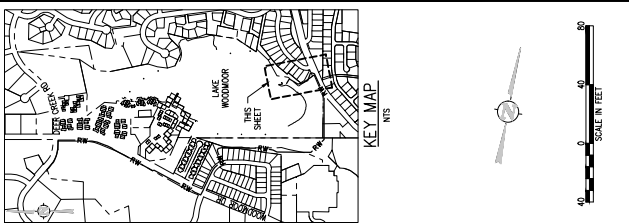
WOODMOOR WSD NO.1
LAKE PUMP STATION NO. 2 AND PIPELINE
EL PASO COUNTY, COLORADO

TRANSMISSION MAIN PLAN AND PROFILE

DESIGNED BY: P. HARRIS
DRAWN BY: J. HARRIS
CHECKED BY: J. HARRIS
DATE: JULY 2021



NO.	DATE	DESD	DWN	REVISION DESCRIPTION



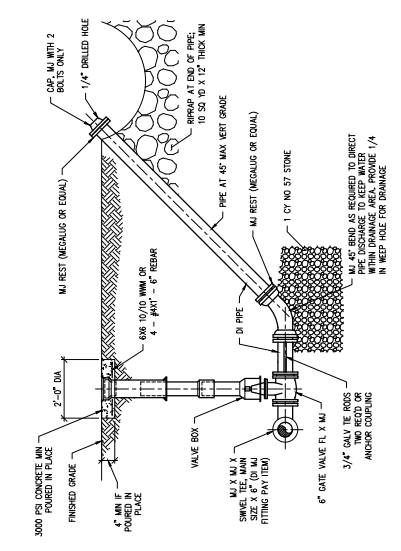


10000 WOODMOOR ROAD
WOODMOOR, COLORADO 80554
TEL: 303.501.1000
WWW.WOODMOOR.CO.GOV

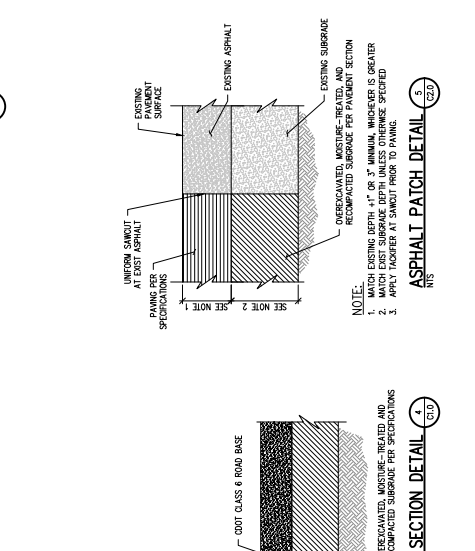
NO.	DATE	DESC	DWN	REVISION DESCRIPTION
1	JULY 2021			

DESIGNED BY: POLYMER
DESIGNED BY: JVA, INC.
CHECKED BY: JVA, INC.
JOB #
DATE: JULY 2021
© JVA, INC.

CIVIL DETAILS
LAKE PUMP STATION NO. 2 AND PIPELINE
WOODMOOR WSD NO. 1
SHEET NO.
CD1.2

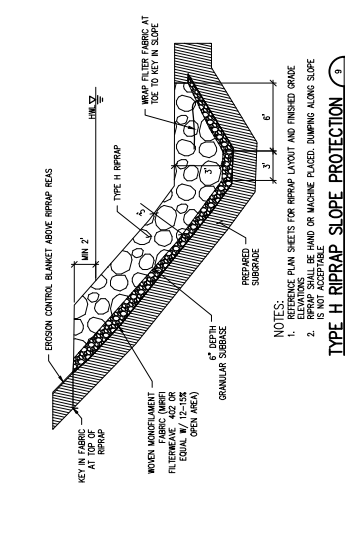


6" BLOW-OFF ASSEMBLY DETAIL (C1.3)

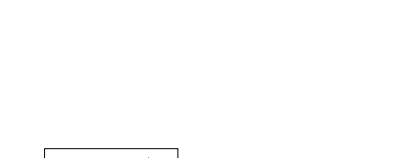


ASPHALT PATCH DETAIL (C1.4)

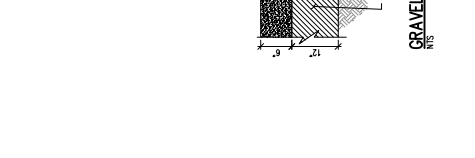
GRAVEL SECTION DETAIL (C1.5)



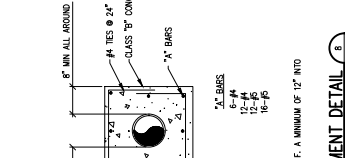
TYPE H RIPRAP SLOPE PROTECTION (C1.6)



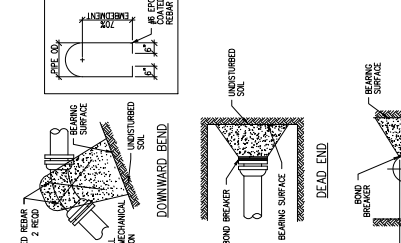
CONCRETE ENCASUREMENT DETAIL (C1.7)



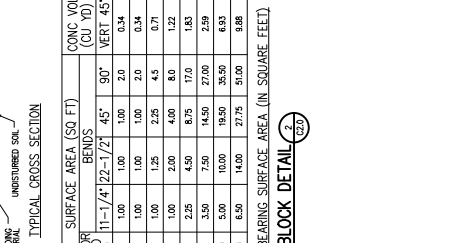
CONCRETE THRUST BLOCK DETAIL (C1.8)



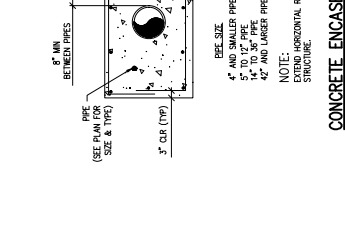
GROUNDWATER BARRIER DETAIL (C1.9)



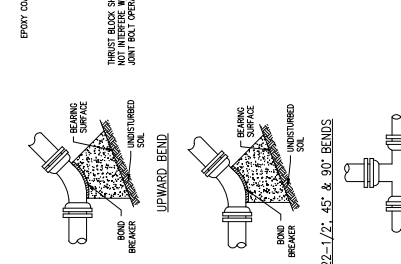
FIELD INSTALLATION-POLYETHYLENE WRAP (C1.1)



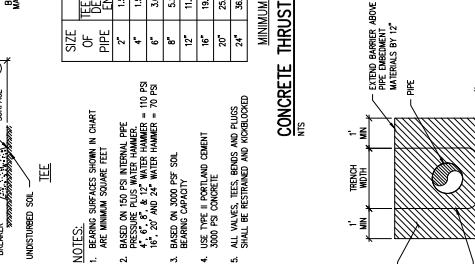
ACCESSIBLE SYMBOL DETAIL (C1.2)



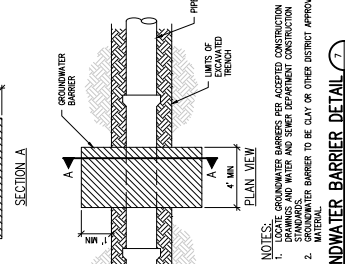
TYPICAL CROSS SECTION



UPWARD BEND, DOWNWARD BEND, and DEAD-END



CONCRETE ENCASUREMENT DETAIL (C1.7)



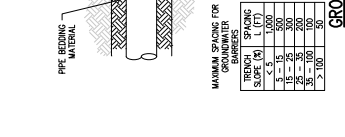
GROUNDWATER BARRIER DETAIL (C1.9)



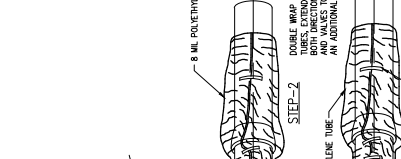
CONCRETE ENCASUREMENT DETAIL (C1.7)



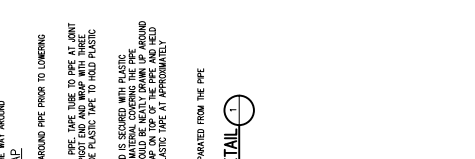
GROUNDWATER BARRIER DETAIL (C1.9)



CONCRETE ENCASUREMENT DETAIL (C1.7)



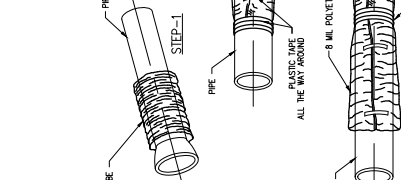
CONCRETE ENCASUREMENT DETAIL (C1.7)



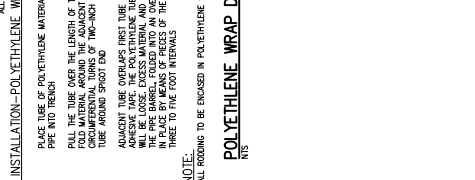
GROUNDWATER BARRIER DETAIL (C1.9)



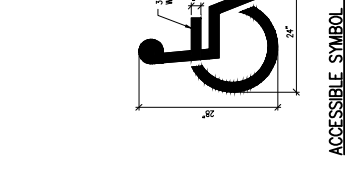
CONCRETE ENCASUREMENT DETAIL (C1.7)



CONCRETE ENCASUREMENT DETAIL (C1.7)



GROUNDWATER BARRIER DETAIL (C1.9)



CONCRETE ENCASUREMENT DETAIL (C1.7)



CONCRETE ENCASUREMENT DETAIL (C1.7)



GROUNDWATER BARRIER DETAIL (C1.9)



CONCRETE ENCASUREMENT DETAIL (C1.7)



WOODMOOR

Water & Sanitation District No. 1

P. O. Box 1407 • Monument, Colorado 80132
Phone (719) 488-2525 • Fax (719) 488-2530

Jennifer Irvine
El Paso County Department of Transportation
3275 Akers Drive
Colorado Springs, CO 80922

Re: *Payment of Permit Fees & Restoration of Usefulness*

Dear Ms. Irvine:

The Woodmoor Water and Sanitation District is in receipt of comments from El Paso County Planning and community development regarding a planned road cut for the establishment of a raw water transmission line in Woodmoor Drive.

General counsel for the District has advised us that under Colorado law, the District has express legislative authority to perform road cuts. §32-1-1006(1)(c)(I), C.R.S. Where the District restores a location to its former state of usefulness, the District is not required to pay any fees to the County. §32-1-1006(1)(c)(II), C.R.S.

Based on this advice, the District has taken the position that the District has no legal obligation to pay permit fees nor perform restoration beyond that which is necessary to restore the location to its former state of usefulness.

Very truly yours,

WOODMOOR WATER & SANITATION DISTRICT

Jessie J. Shaffer
District Manager

cc: El Paso County Planning & Community Development
Members of the District Board of Directors