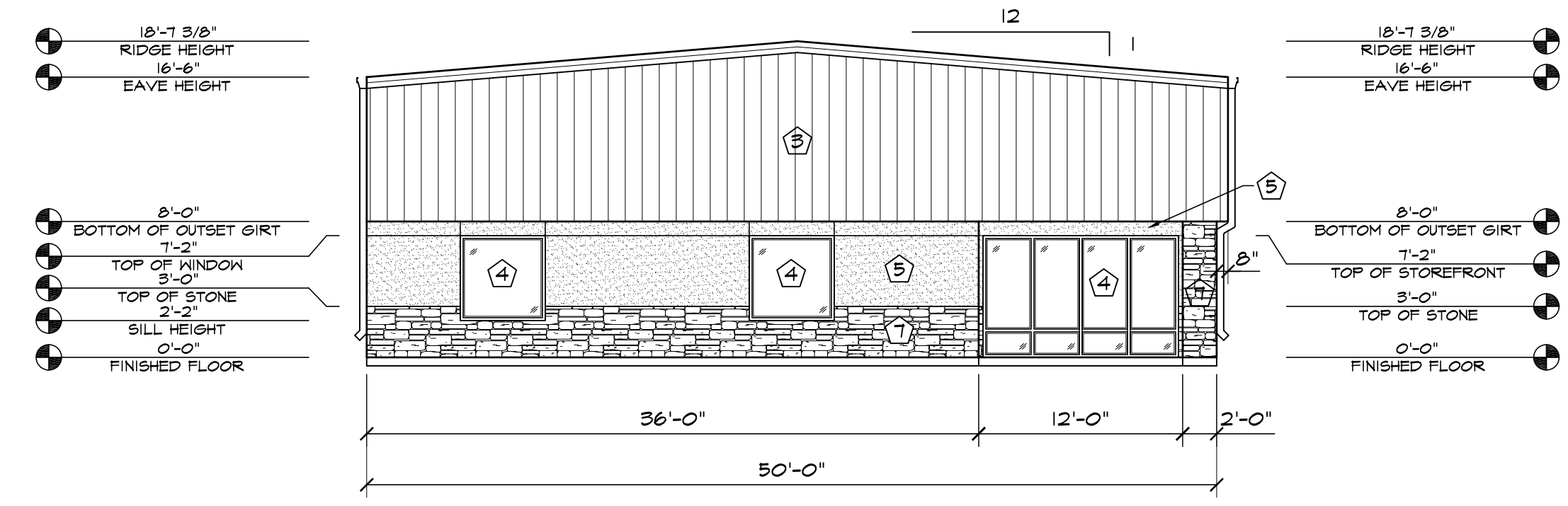
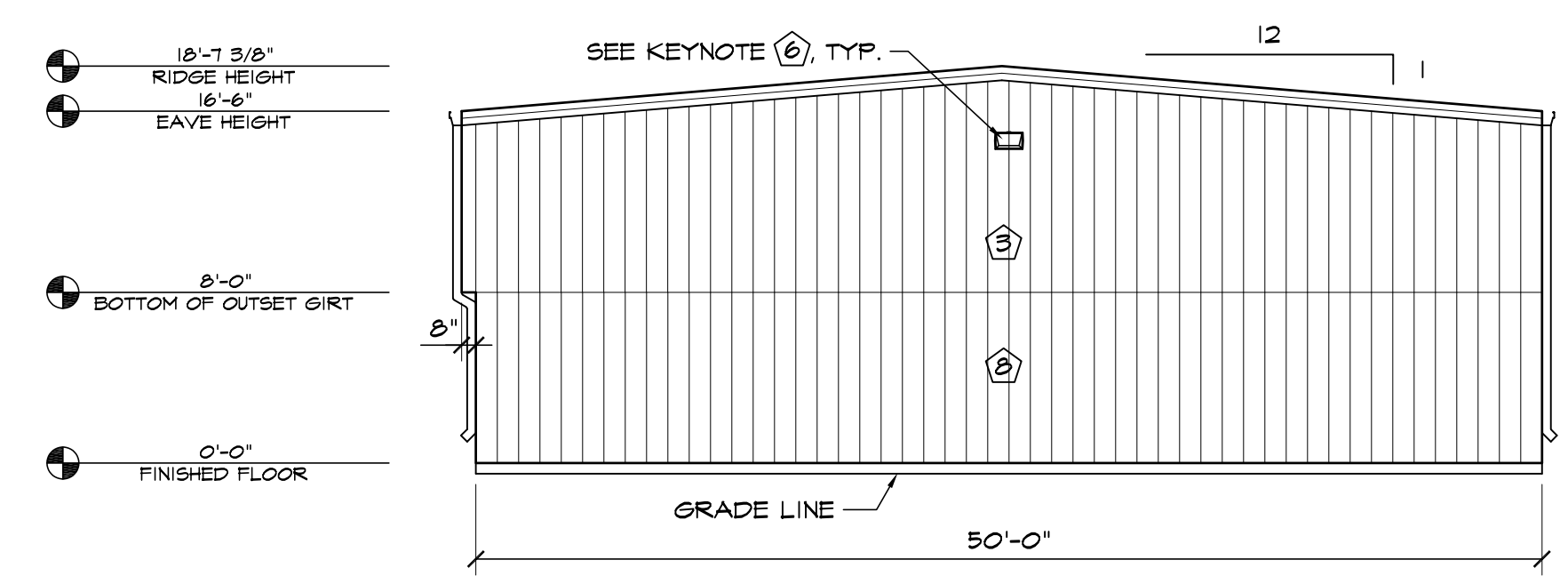


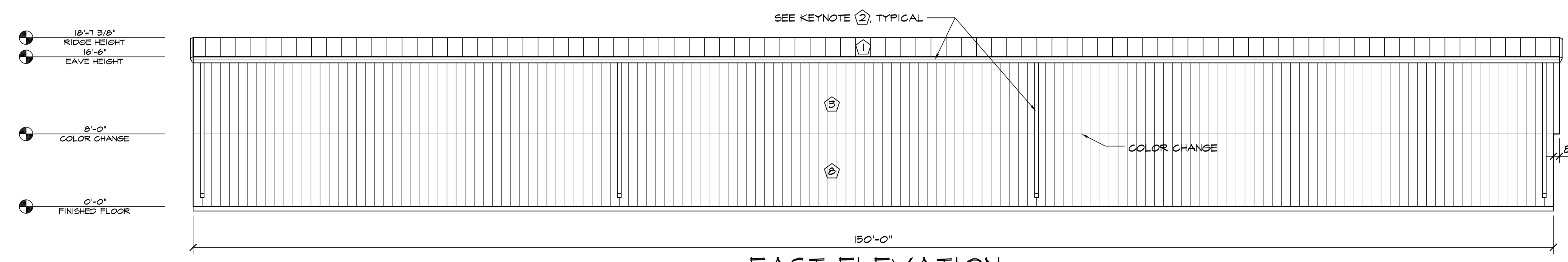
1 WEST ELEVATION
SCALE: 1/8"=1'-0"



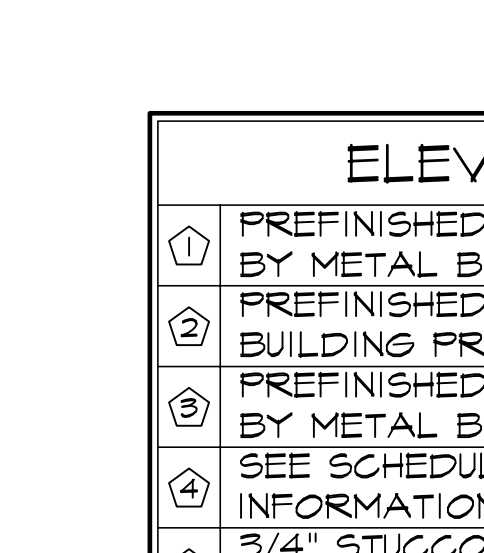
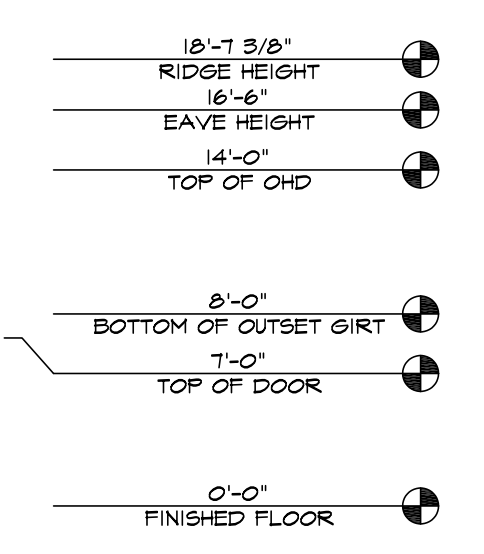
2 NORTH ELEVATION
SCALE: 1/8"=1'-0"



3 SOUTH ELEVATION
SCALE: 1/8"=1'-0"



4 EAST ELEVATION
SCALE: 1/8"=1'-0"



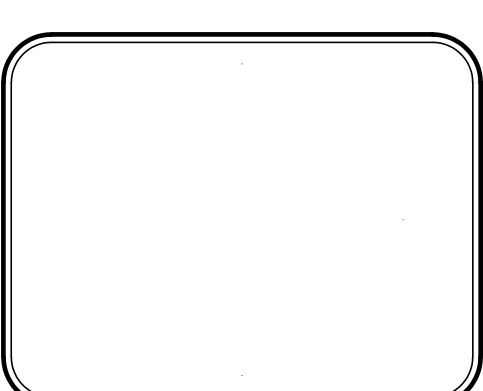
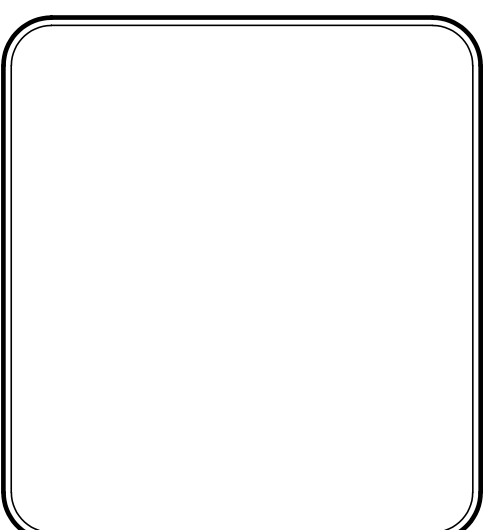
ELEVATION KEY NOTES	
①	PREFINISHED 24 GA. "PBR" METAL ROOF PANELS BY METAL BUILDING PROVIDER
②	PREFINISHED GUTTER & DOWNSPOUTS BY METAL BUILDING PROVIDER
③	PREFINISHED 26 GA. "PBR" METAL WALL PANELS BY METAL BUILDING PROVIDER
④	SEE SCHEDULES ON "A" SHEETS FOR ALL DOOR INFORMATION
⑤	3/4" STUCCO FINISH SYS. W/ EXPANSION JOINT-120 SF MAX AREA
⑥	WALL PACK LIGHT TOP OF LIGHT @ 15'-6" A.F.F. SEE ELECT. PLANS
⑦	STONE VENEER 1/2 2" GAP INSTALLED W/ SCHLUTER TRIM
⑧	PREFINISHED 26 GA. "PBR" METAL WALL PANELS BY METAL BUILDING PROVIDER

NOTES
R-SEAL THICKNESS IS NOT REFLECTED IN THE ELEVATION DIMENSIONS.

HAMMERS CONSTRUCTION INC.
COMMERCIAL GENERAL CONTRACTORS SPECIALIZING IN DESIGN/BUILD
PRESIDENT: STEVE R. HAMMERS
VICE PRES: DAVID J. HAMMERS
1411 WOOLSEY HEIGHTS
COLORADO SPRINGS, CO 80915
(719) 570-1589 FAX (719) 570-7008
www.hammersconstruction.com

THIS DRAWING CONTAINS MATERIAL & INFORMATION WHICH MAY NOT BE REPRODUCED WITHOUT WRITTEN CONSENT OF HAMMERS CONSTRUCTION INC. THESE DRAWINGS ARE INTENDED TO BE USED ONLY BY HAMMERS CONSTRUCTION & ITS REPRESENTATIVES. THESE DRAWINGS HAVE NOT BEEN PREPARED FOR ANY OTHER PURPOSE THAN TO INDICATE THE GENERAL FEATURES AND PLACEMENT OF THE PROPOSED PROJECT. COPYRIGHT © 2021 HAMMERS CONSTRUCTION

CBP 2-1, LOT 2
7735 GARY WATSON POINT
COLORADO SPRINGS, CO 80915
EL PASO COUNTY, COLORADO



DATE: APRIL 5, 2021
DRAWN BY: W. VENEROS
PROJ. MGR: R. GREEN
SCALE: SEE PLAN
APPROVED BY:
JOB NO: 1160

RESUBMITTALS:	
▲	4-14-21 / COMMENTS 4-1-21
▲	
▲	
▲	
▲	