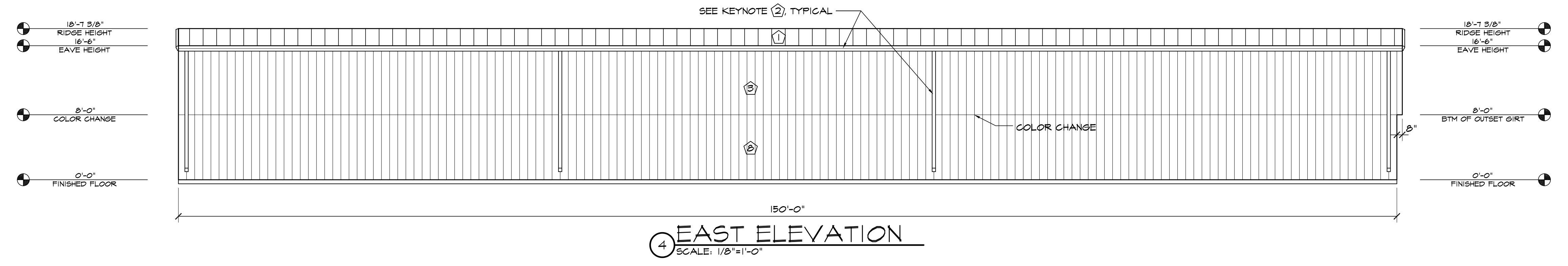
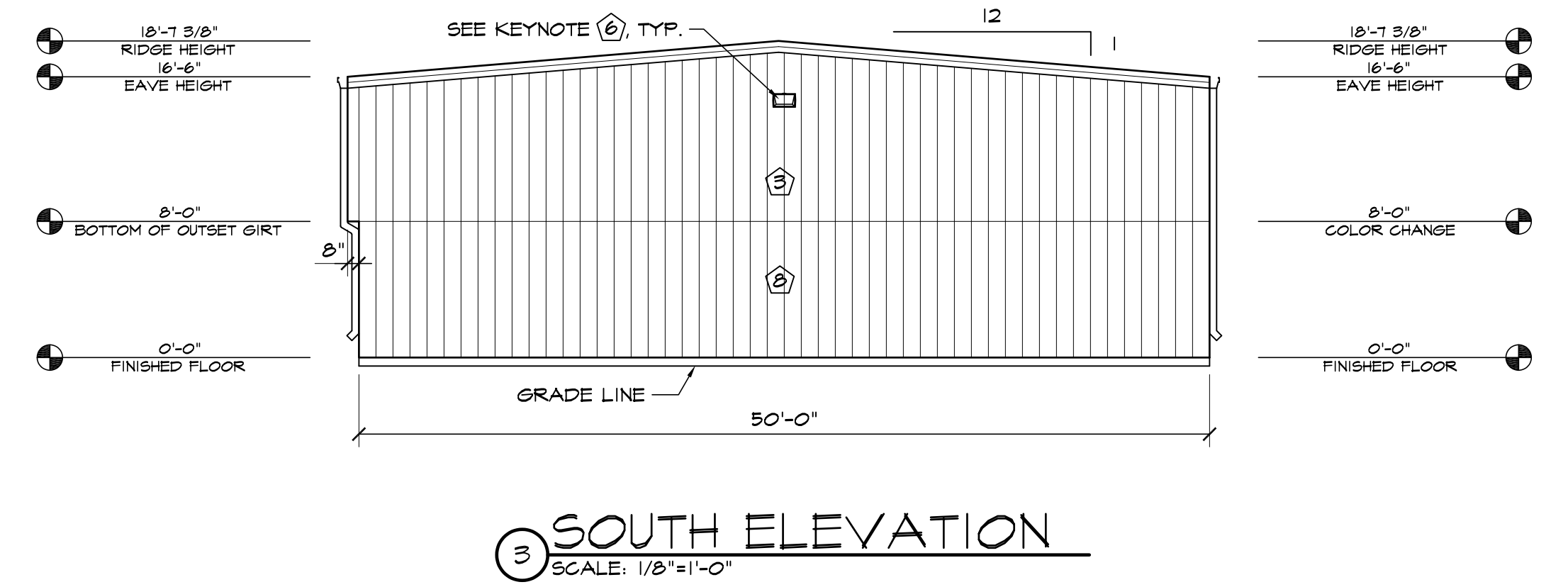
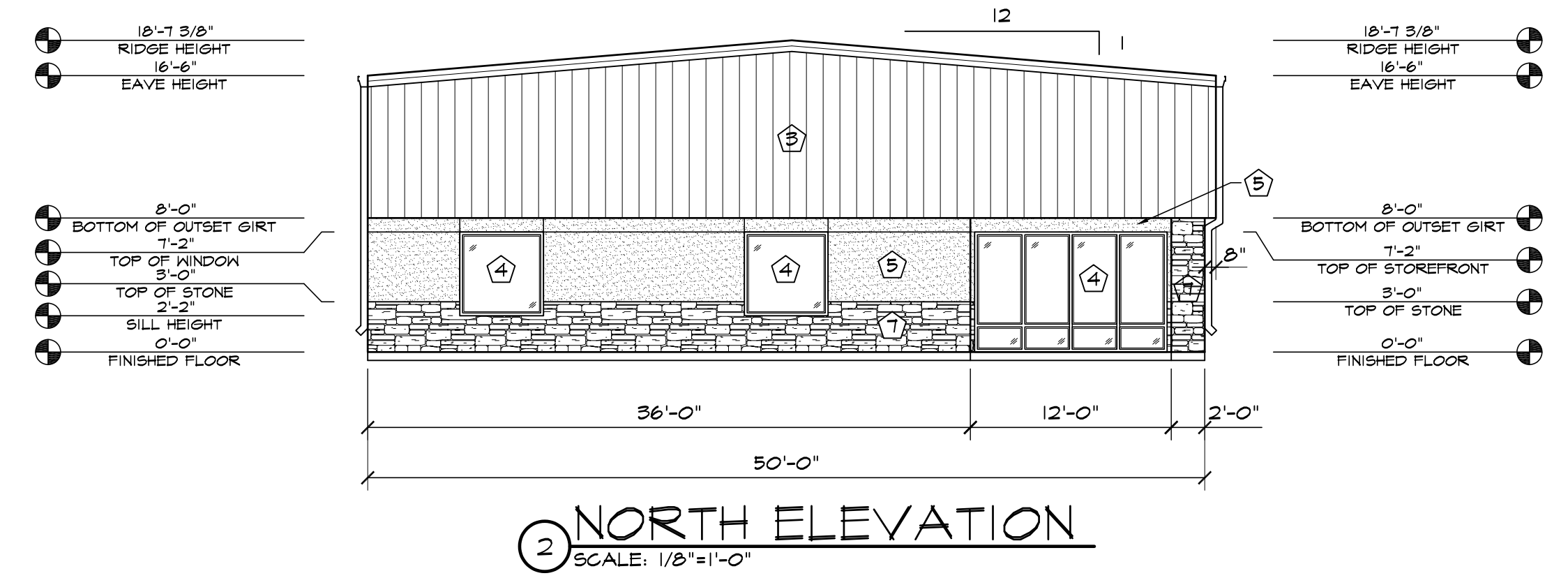
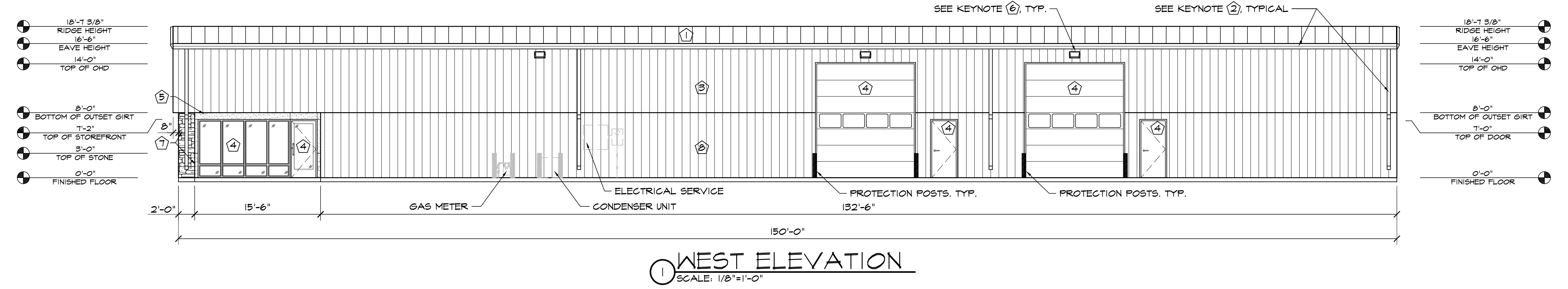


ELEVATION KEY NOTES	
①	PREFINISHED 24 GA. "FBR" METAL ROOF PANELS BY METAL BUILDING PROVIDER
②	PREFINISHED GUTTER & DOWNSPOUTS BY METAL BUILDING PROVIDER
③	PREFINISHED 26 GA. "FBR" METAL WALL PANELS BY METAL BUILDING PROVIDER
④	SEE SCHEDULES ON "A" SHEETS FOR ALL DOOR INFORMATION
⑤	3/4" STUCCO FINISH SYS. W/ EXPANSION JOINT-120 SF MAX AREA
⑥	WALL PACK LIGHT TOP OF LIGHT @ 15'-6" A.F.F. SEE ELECT. PLANS
⑦	STONE VENEER W/ 2" CAP INSTALLED W/ SCHLUTER TRIM
⑧	PREFINISHED 26 GA. "FBR" METAL WALL PANELS BY METAL BUILDING PROVIDER

HAMMERS CONSTRUCTION INC.
 COMMERCIAL GENERAL CONTRACTORS SPECIALIZING IN DESIGN/BUILD
 PRESIDENT: STEVE R. HAMMERS
 VICE PRES. DAVID J. HAMMERS
 1411 WOOLSEY HEIGHTS
 COLORADO SPRINGS, CO 80915
 (719) 570-1589 FAX (719) 570-7008
 www.hammersconstruction.com

THIS DRAWING CONTAINS MATERIAL & INFORMATION WHICH MAY NOT BE REPRODUCED WITHOUT WRITTEN CONSENT OF HAMMERS CONSTRUCTION INC. THESE DRAWINGS ARE INTENDED TO BE USED ONLY BY HAMMERS CONSTRUCTION & ITS REPRESENTATIVES. THESE DRAWINGS HAVE NOT BEEN PREPARED FOR ANY OTHER PURPOSE THAN TO INDICATE THE GENERAL FEATURES AND PLACEMENT OF THE PROPOSED PROJECT. COPYRIGHT © 2021 HAMMERS CONSTRUCTION

CBP 2-1, LOT 2
 7735 GARY WATSON POINT
 COLORADO SPRINGS, CO 80915
 EL PASO COUNTY, COLORADO



DATE: FEB. 22, 2021
 DRAWN BY: W. VENEROS
 PROJ. MGR: R. GREEN
 SCALE: SEE PLAN
 APPROVED BY:
 JOB NO: 1160

RESUBMITTALS: