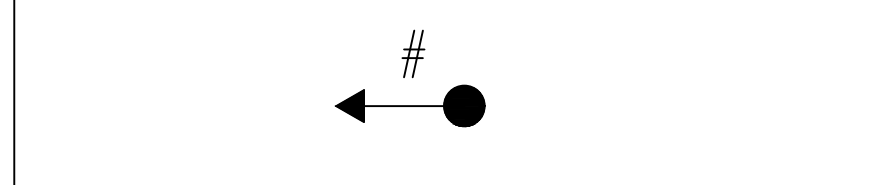


Fox Run Substation
Luminaire list

Φ_{Total} 333540 lm	P_{Total} 3040.0 W	Luminous efficacy 109.7 lm/W
-----------------------------	-------------------------	---------------------------------

Luminaire No. & Direction

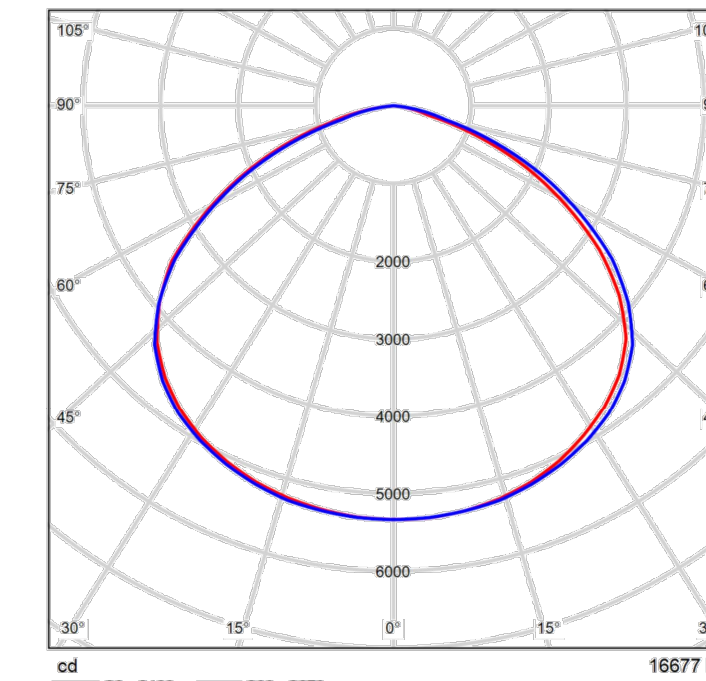


pcs.	Manufacturer	Article No.	Article name	P	Φ	Luminous efficacy
20	Appleton	I/ AMLGL8W	AREAMASTER LED 19500 LUMENS NEMA 7X7 CLEAR GLASS	152.0 W	16677 lm	109.7 lm/W

Appleton - AREAMASTER LED 19500 LUMENS NEMA 7X7 CLEAR GLASS



Article No.	I/AMLGL8W6
P	152.0 W
$\Phi_{Luminaire}$	16677 lm
Luminous efficacy	109.7 lm/W
CCT	3114 K
CRI	83



Polar LDC

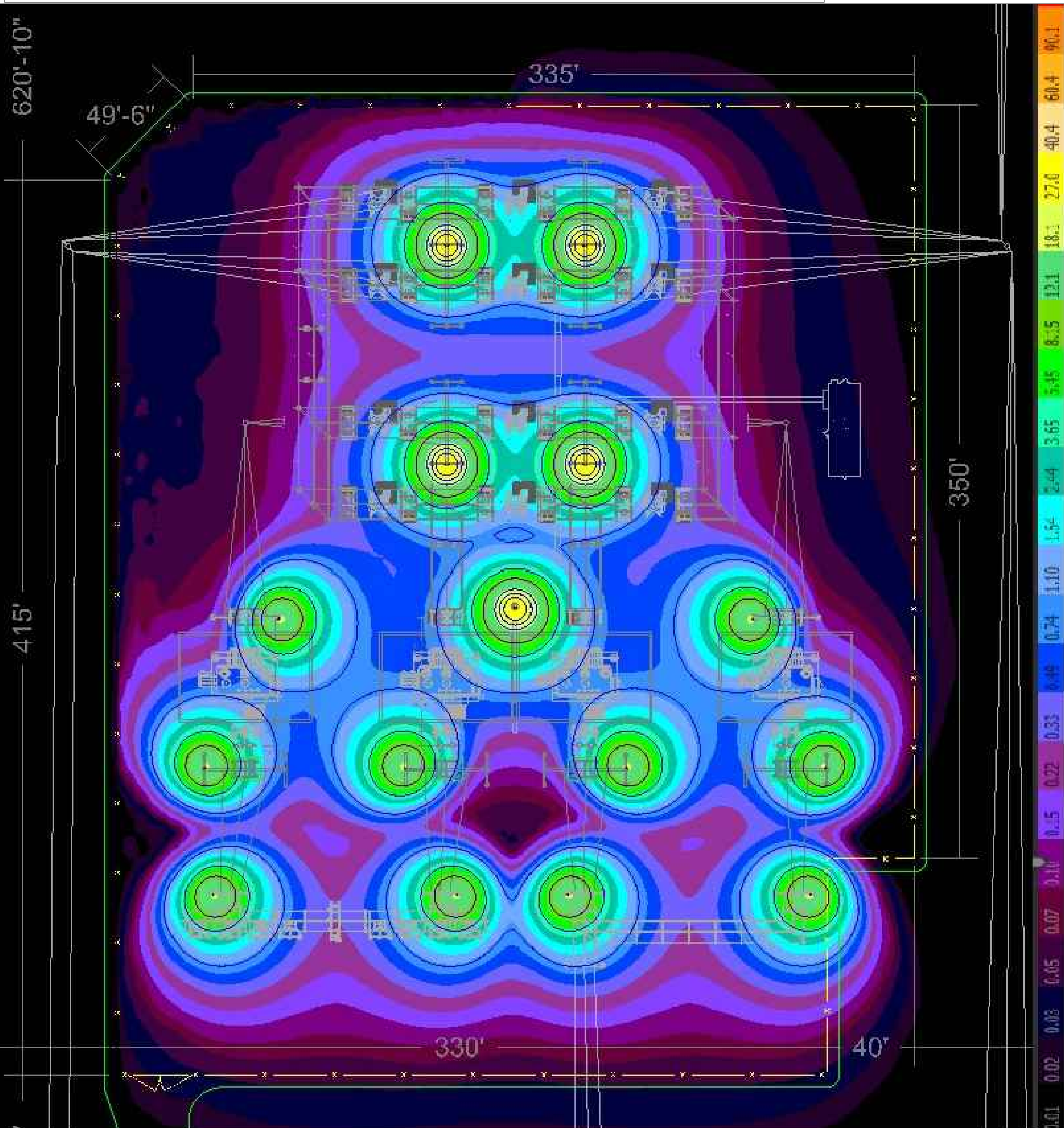
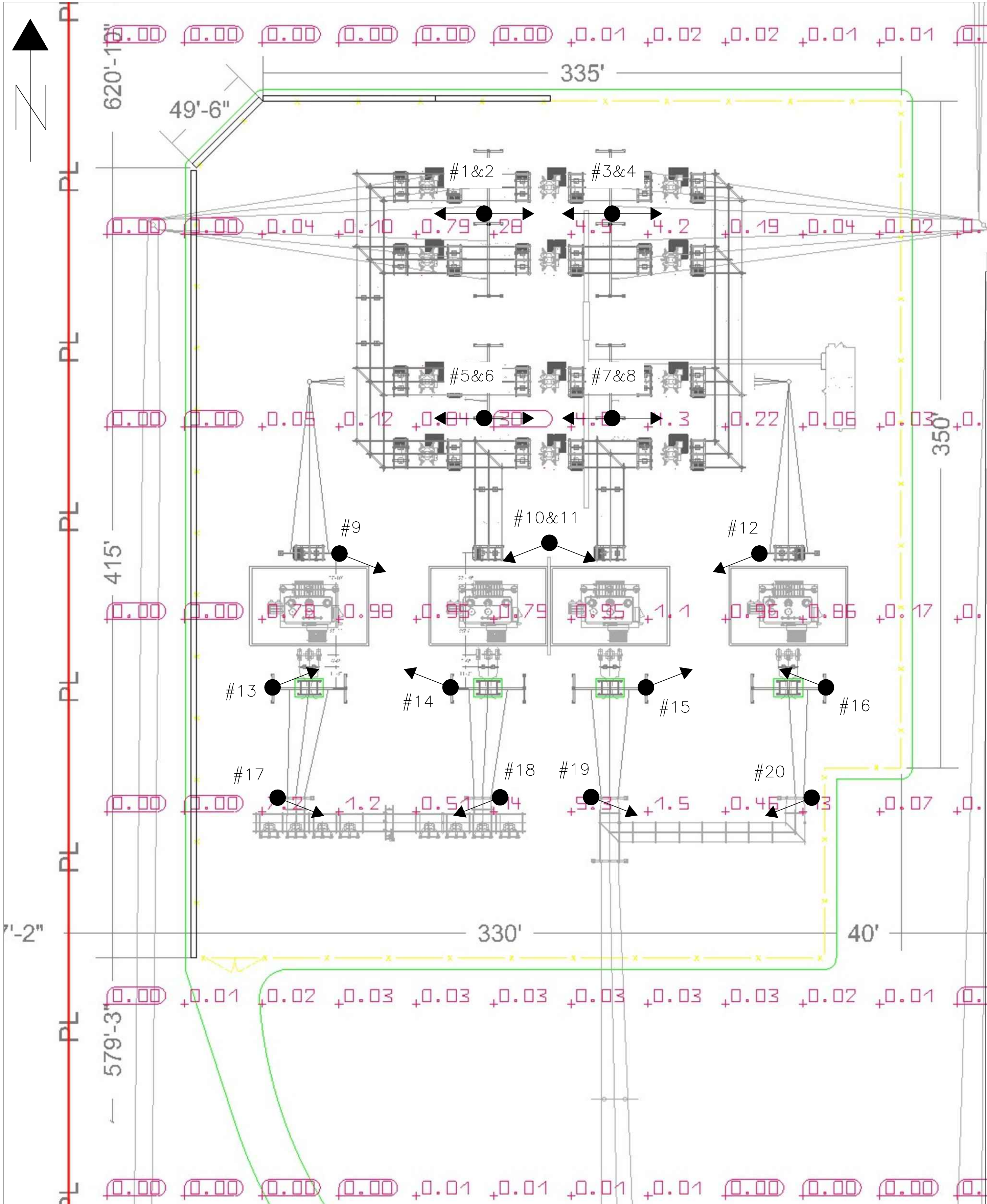
Areamaster LED Gen2 Flood light Series
Pole Mount
19500 LUMENS, 3000 K CCT, NEMA 7X7
Yoke Mount
BU-120-277 Vac, 50/60Hz,
BH-347-480 Vac, 50/60Hz
3/4" NPT Hub
7 x7 OPTICS
Warm White
CLEAR GLASS

Class I, Division 2, Groups A, B, C, D
Class I, Zone 2 GROUP IIC
TYPE 3R, 4, 4X
IP66/67
Suitable for Use in Wet Locations
Marine Outside (Salt Water)

Refer to catalog for additional options

NOTES:

1. THE TILT ANGLE OF THE LIGHTS SHALL BE AT 20-DEGREE ABOVE HORIZON PLANE ANGLED TOWARDS THE GROUND SURFACE.
2. LIGHTS SHALL BE MOUNTED 15- FEET ABOVE GRADE.
3. CALCULATIONS SHOWN ARE MAINTAINED HORIZONTAL FOOTCANDALS TAKEN AS SHOWN IN CALCULATIONS SUMMARY.
4. FIXTURE ORIENTATION IS SUCH THAT 0 IS TO THE RIGHT OF DRAWING AND 90 IS TO THE TOP OF THE DRAWING.
5. LUMINARY LUMENS EQUAL LUMENS LEAVING LUMINARY WITH EFFICIENCY CONSIDERED.



<p>FOX RUN SUBSTATION 115/69/12.47KV LIGHTING PLAN 17090 SHAHARA RD, MONUMENT CO PARCEL # 6121003005 TRI-STATE GENERATION & TRANSMISSION ASSOCIATION, INCORPORATED</p>						
7	6	5	4	3	2	1
No.	Date	Appd.				
1	01-03-23	KGU				
2	01-13-22	KGU				
<p>UPDATE BY: KENUJL 1/11/2023 12:15 PM Contact: 0485</p>						
<p>PATH: C:\Users\kenut\OneDrive - Tri-State Generation and Transmission Association, Inc\enutil\Projects\Fox Run Substation\EL_Pose County Docs\Lighting\Plan.dwg</p>						

PLAN PREPARER CONTACT:
KENT UTLEY
TRI-STATE G&T
303-254-3170
kutley@tristategt.org

TRI-STATE
Generation and Transmission
Association, Inc.
A Touchstone Energy Cooperative

1100 W. 116th Ave.
P.O. Box 33695
Denver, Colorado 80233
303-452-6111