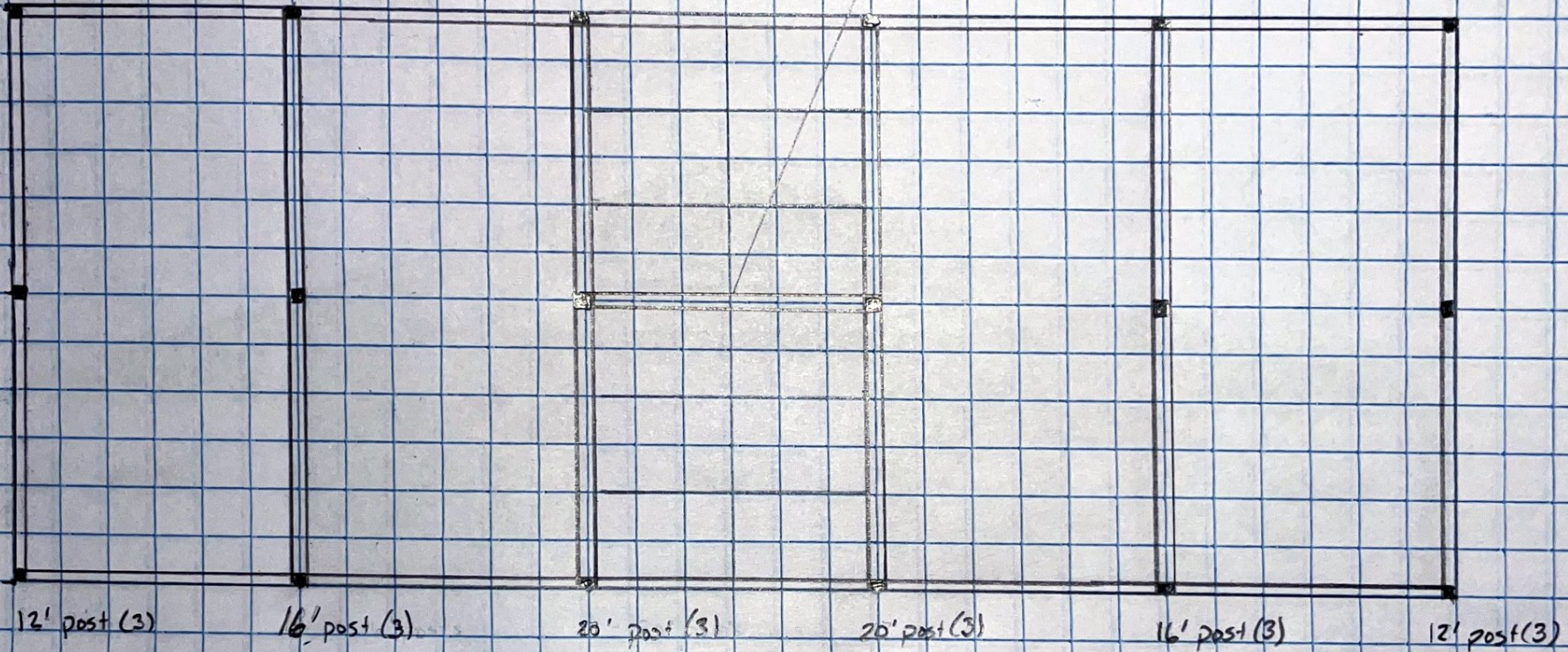


Center & Ends



traced critical #2

■ = posts (6x6)

Rafters (2x8)

Center & End Supports (2x10)

SPLASH BOARD (2x8x12') Traced

$$12' = 6$$

$$14' = (52)$$

$$12' = (8)$$

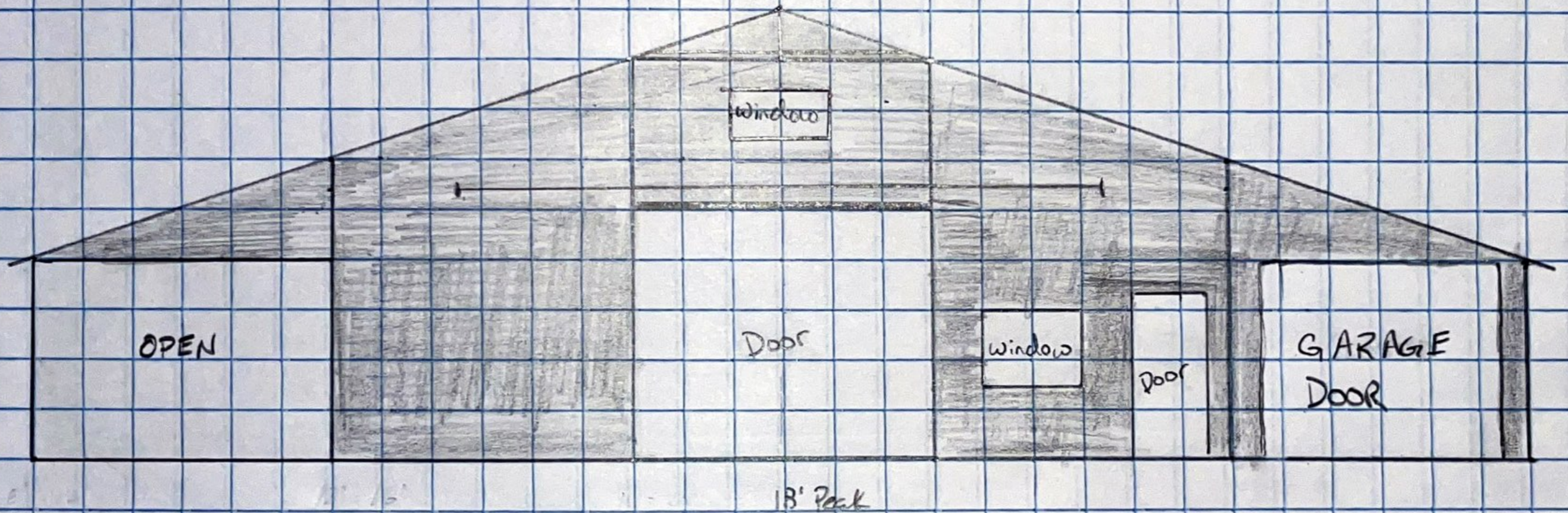
$$12' = (14)$$

$$16' = 6$$

$$8' = (26)$$

$$20' = 6$$

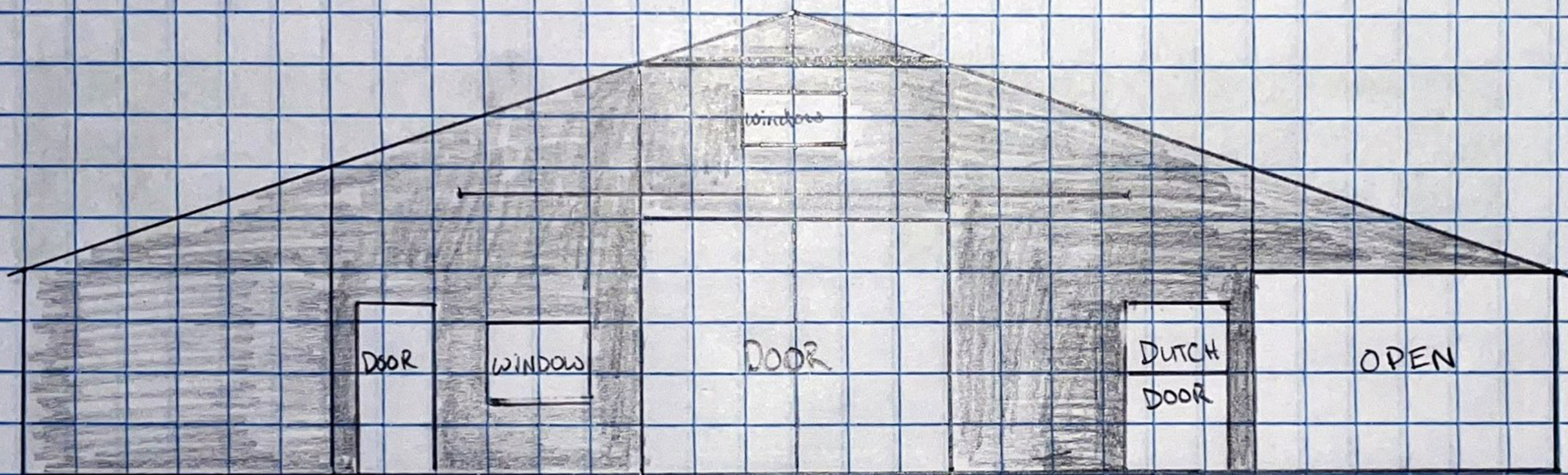
NORTH END OF BARN



$$100^2 + 900 = 10000$$

$$31.6227$$

SOUTH END OF BARN



WEST END BARN



EAST END BARN

