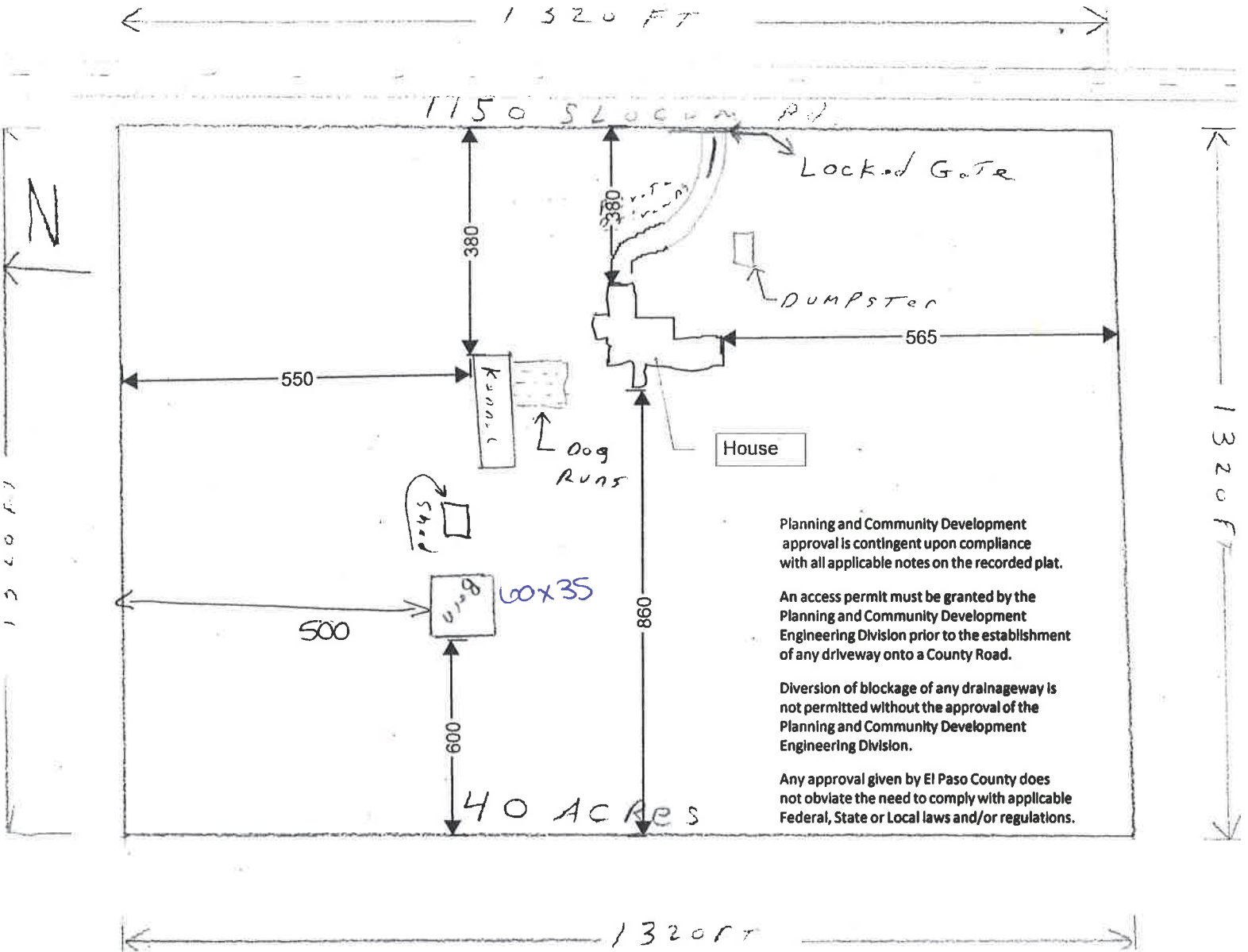


A61933

RR-5
40 ACRES

1150 SLOCUM RD
SE4NE4 SEC 11-14-64
4400000247



Planning and Community Development approval is contingent upon compliance with all applicable notes on the recorded plat.

An access permit must be granted by the Planning and Community Development Engineering Division prior to the establishment of any driveway onto a County Road.

Diversion of blockage of any drainageway is not permitted without the approval of the Planning and Community Development Engineering Division.

Any approval given by El Paso County does not obviate the need to comply with applicable Federal, State or Local laws and/or regulations.

BESQCP Not Required
by JE on 7/18/19

APPROVED

DENIED

BY JE DATE 7/18/19
FOR 2100 V BARR (EXISTING)

EL PASO COUNTY
PLANNING AND COMMUNITY DEVELOPMENT

BEFORE → DAMAGE

OLD BARN

50 x 60

AC-1933

20 x 60

HAY LOFT

Remove

North overhang

new size 60 x 35

