

**EL PASO COUNTY**  
**COLORADO**

*Copied/mailed  
8/24/21  
RH*

COMMISSIONERS:  
STAN VANDERWERF (CHAIR)  
LONGINOS GONZALEZ, JR. (VICE-CHAIR)

HOLLY WILLIAMS  
CARRIE GEITNER  
CAMI BREMER

PLANNING AND COMMUNITY DEVELOPMENT DEPARTMENT  
CRAIG DOSSEY, EXECUTIVE DIRECTOR

8/24/2021

RE: Trails at Aspen Ridge Filing No. 1 Re-Plat – Vacation/Re-plat

File: VR-21-002

Parcel ID Nos.: 5509301011, 5509301012, 5509301013, 5509301014, 5509301081

To Whom It May Concern:

This letter is to inform property owners adjacent to the property located at parcel numbers 5509301011, 5509301012, 5509301013, 5509301014, and 5509301081 that the applicant, COLA LLC, has requested approval of an application for a Vacation/Re-plat to alter the lot lines of four existing lots and one tract within an existing subdivision.

The Planning and Community Development Director may make a formal decision regarding the Final Plat application on 9/7/2021. Any comments or questions may be forwarded to me prior to that decision. Administrative approval by the Planning and Community Development Director is subject to the appeal provisions of the Land Development Code.

You may view the application documents online at [www.epcdevplanreview.com](http://www.epcdevplanreview.com). Please feel free to contact me with any questions, comments, or concerns you may have prior to the decision.

Respectfully,

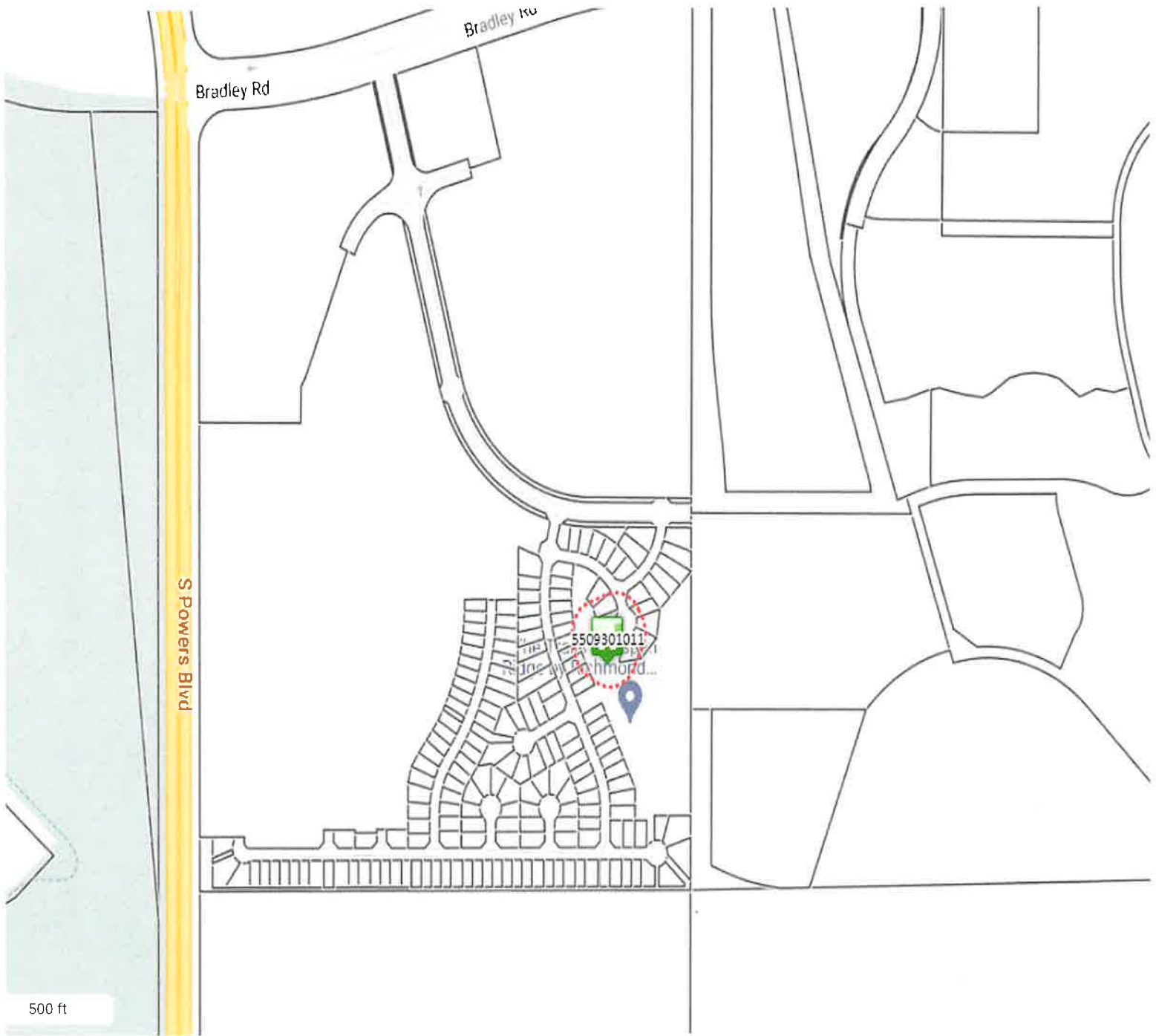
John Green  
El Paso County Planning and Community Development  
719-520-6442  
[johngreen@elpasoco.com](mailto:johngreen@elpasoco.com)

2880 INTERNATIONAL CIRCLE, SUITE 110  
PHONE: (719) 520-6300



COLORADO SPRINGS, CO 80910-3127  
FAX: (719) 520-6695

[WWW.ELPASOCO.COM](http://WWW.ELPASOCO.COM)



1273 FALLING ROCK DR

No Photo Available



5509301011  
COLA LLC

Market Value \$47,150

Disclaimer

We have made a good-faith effort to provide you with the most recent and most accurate information available. However, if you need to use this information in any legal or official venue, you will need to obtain official copies from the Assessor's Office. Do be aware that this data is subject to change on a daily basis. If you believe that any of this information is incorrect, please call us at (719) 520-6600.

COLA LLC  
7910 GATEWAY BLVD EAST #102  
EL PASO TX 79915-1810

~~COLA LLC  
7910 GATEWAY BLVD EAST #102  
EL PASO TX 79915-1810~~

~~COLA LLC  
7910 GATEWAY BLVD EAST #102  
EL PASO TX 79915-1810~~

~~COLA LLC  
7910 GATEWAY BLVD EAST #102  
EL PASO TX 79915-1810~~

~~COLA LLC  
7910 GATEWAY BLVD EAST #102  
EL PASO TX 79915-1810~~

~~COLA LLC  
7910 GATEWAY BLVD EAST #102  
EL PASO TX 79915-1810~~

~~COLA LLC  
7910 GATEWAY BLVD EAST #102  
EL PASO TX 79915-1810~~

~~COLA LLC  
7910 GATEWAY BLVD EAST #102  
EL PASO TX 79915-1810~~

~~COLA LLC  
7910 GATEWAY BLVD EAST #102  
EL PASO TX 79915-1810~~

ASPEN VIEW HOMES LLC  
555 MIDDLE CREEK PKWY STE 500  
COLORADO SPRINGS CO 80921

~~ASPEN VIEW HOMES LLC  
555 MIDDLE CREEK PKWY #500  
COLORADO SPRINGS CO 80921~~

~~ASPEN VIEW HOMES LLC  
555 MIDDLE CREEK PKWY #500  
COLORADO SPRINGS CO 80921~~

~~ASPEN VIEW HOMES LLC  
555 MIDDLE CREEK PKWY #500  
COLORADO SPRINGS CO 80921~~

~~ASPEN VIEW HOMES LLC  
555 MIDDLE CREEK PKWY #500  
COLORADO SPRINGS CO 80921~~

~~ASPEN VIEW HOMES LLC  
555 MIDDLE CREEK PKWY #500  
COLORADO SPRINGS CO 80921~~

WATERVIEW II METRO DISTRICT  
2154 E COMMONS AVE STE 2000  
LITTLETON CO 80122