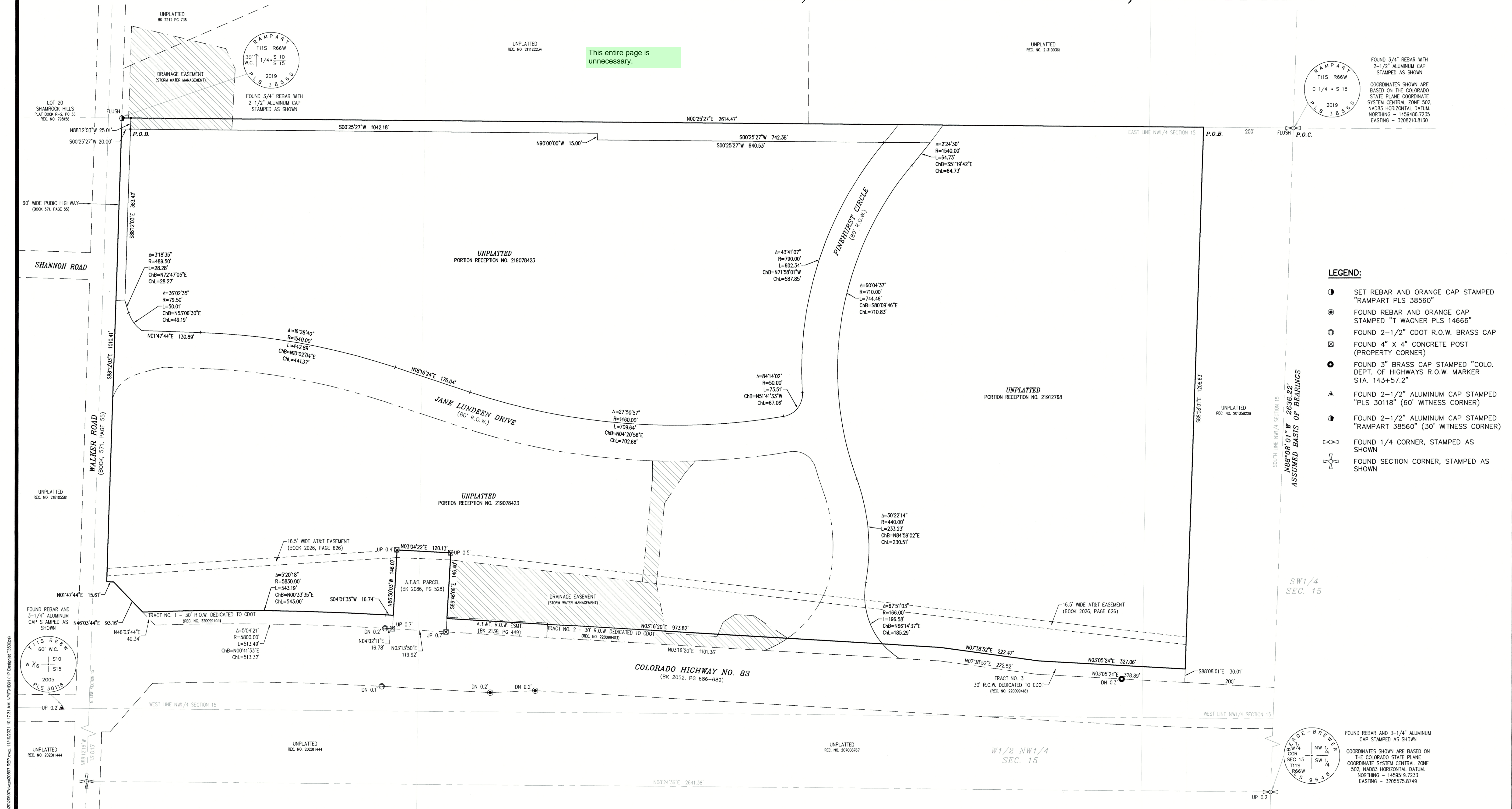


MA SUBDIVISION

A PORTION OF THE E1/2 OF THE NW1/4 OF SECTION 15, TOWNSHIP 11 SOUTH,
RANGE 66 WEST OF THE 6th P.M., EL PASO COUNTY, COLORADO



AS DEEDED

AS DEEDED
NOTE: ONLY DEEDED BEARINGS AND DISTANCES SHOWN

MA SUBDIVISION - PT. E1/2 NW1/4 SEC. 15, T11S,
R66W OF THE 6th P.M., EL PASO COUNTY, COLORADO

RAMPART
SURVEYS, LLC

P.O. Box 5101 Woodland Park, CO. 80866 (719) 687-0920

DRAWING: 20597REP.DWG

PAGE 2 OF 3

0' 100' 200'

SCALE: 1" = 100'

JOB NO.: 20597

OCTOBER 4, 2021

MA SUBDIVISION

A PORTION OF THE E1/2 OF THE NW1/4 OF SECTION 15, TOWNSHIP 11 SOUTH, RANGE 66 WEST OF THE 6th P.M., EL PASO COUNTY, COLORADO

