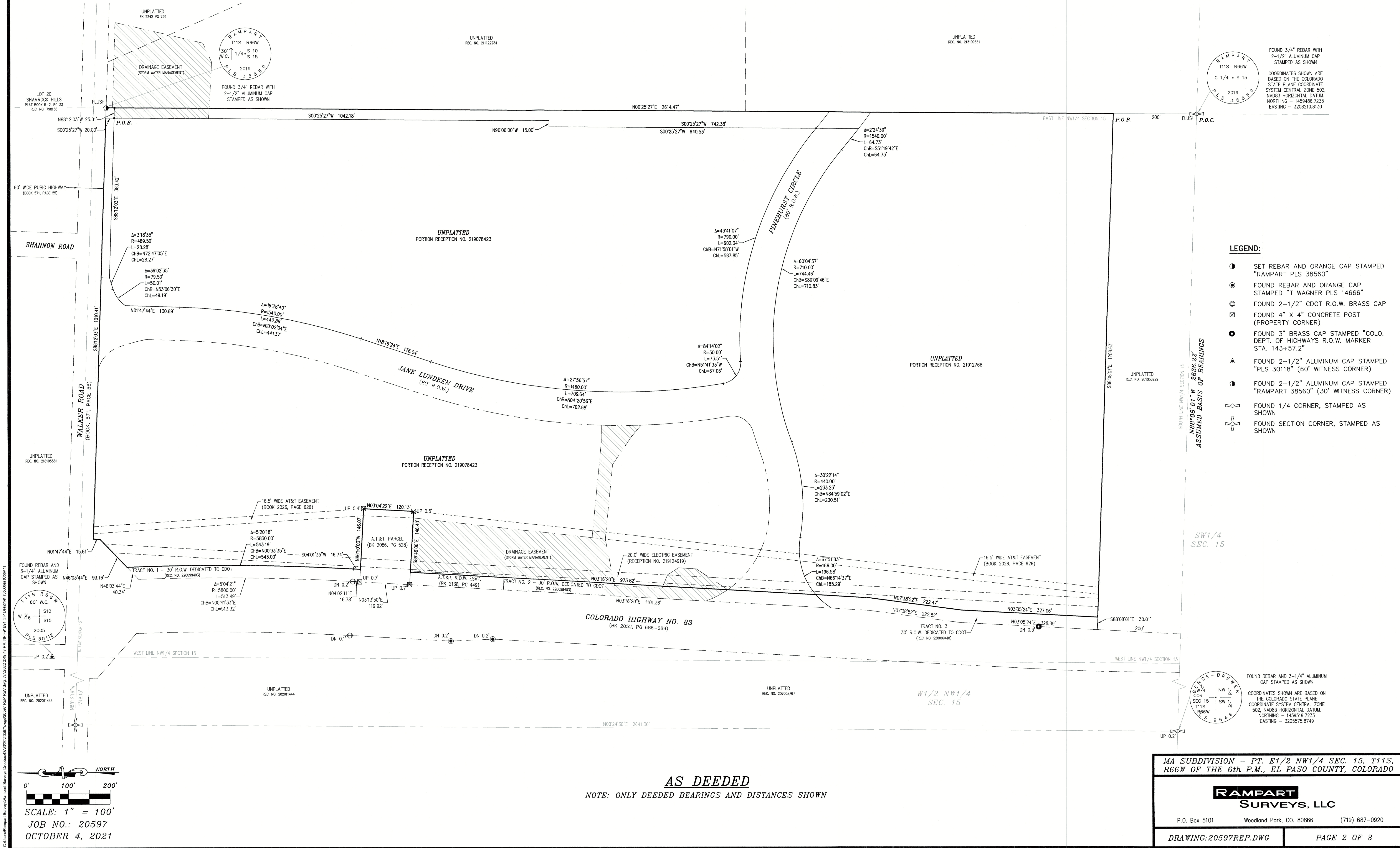


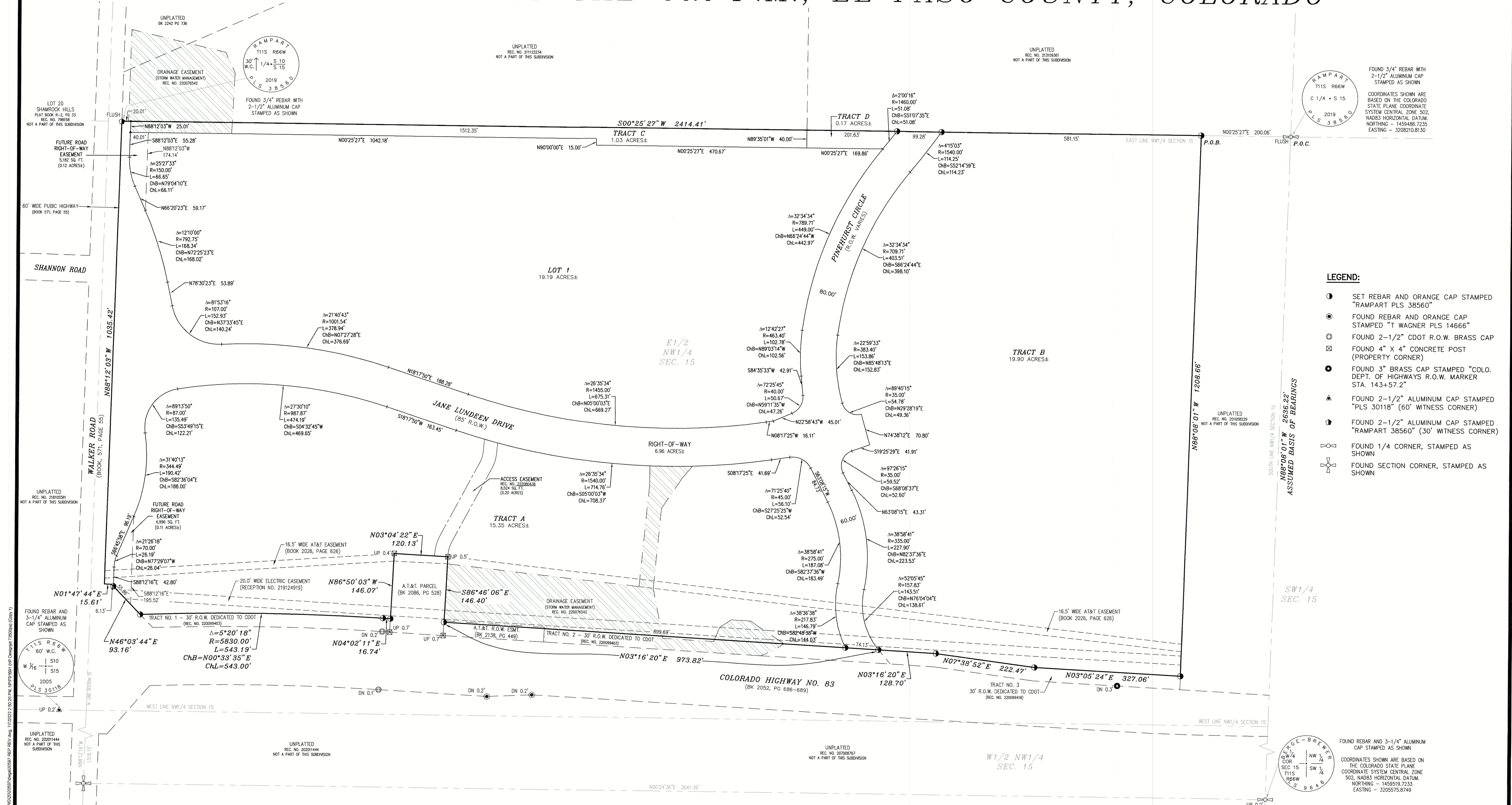
MA SUBDIVISION

A PORTION OF THE E1/2 OF THE NW1/4 OF SECTION 15, TOWNSHIP 11 SOUTH, RANGE 66 WEST OF THE 6th P.M., EL PASO COUNTY, COLORADO

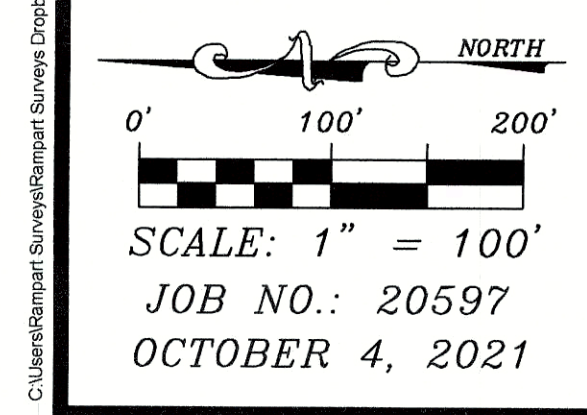


MA SUBDIVISION

A PORTION OF THE E1/2 OF THE NW1/4 OF SECTION 15, TOWNSHIP 11 SOUTH, RANGE 66 WEST OF THE 6th P.M., EL PASO COUNTY, COLORADO



- LEGEND:**
- SET REBAR AND ORANGE CAP STAMPED "RAMPART PLS 38560"
 - FOUND REBAR AND ORANGE CAP STAMPED "T WAGNER PLS 14666"
 - FOUND 2-1/2" CDOT R.O.W. BRASS CAP
 - FOUND 4" X 4" CONCRETE POST (PROPERTY CORNER)
 - FOUND 3" BRASS CAP STAMPED "COLO. DEPT. OF HIGHWAYS R.O.W. MARKER STA. 143+57.2"
 - FOUND 2-1/2" ALUMINUM CAP STAMPED "PLS 30118" (60' WITNESS CORNER)
 - FOUND 2-1/2" ALUMINUM CAP STAMPED "RAMPART 38560" (30' WITNESS CORNER)
 - FOUND 1/4" CORNER, STAMPED AS SHOWN
 - ✕ FOUND SECTION CORNER, STAMPED AS SHOWN



AS PLATTED
NOTE: ONLY MEASURED BEARINGS AND DISTANCES SHOWN

MA SUBDIVISION - PT. E1/2 NW1/4 SEC. 15, T11S, R66W OF THE 6th P.M., EL PASO COUNTY, COLORADO

RAMPART SURVEYS, LLC

P.O. Box 5101 Woodland Park, CO. 80866 (719) 687-0920

DRAWING: 20597REP.DWG PAGE 3 OF 3