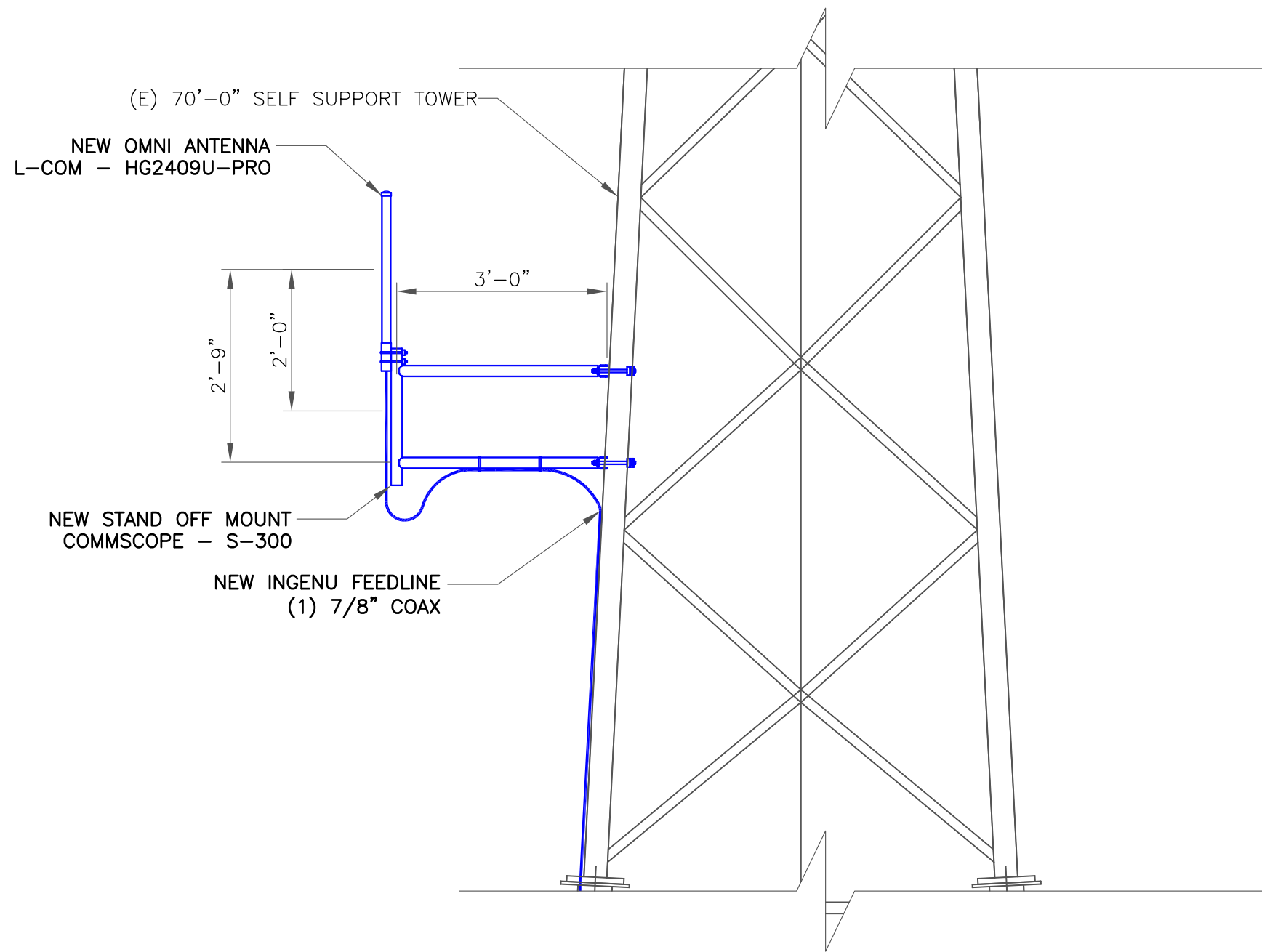


1 FINAL TOWER ELEVATION  
SCALE: NOT TO SCALE

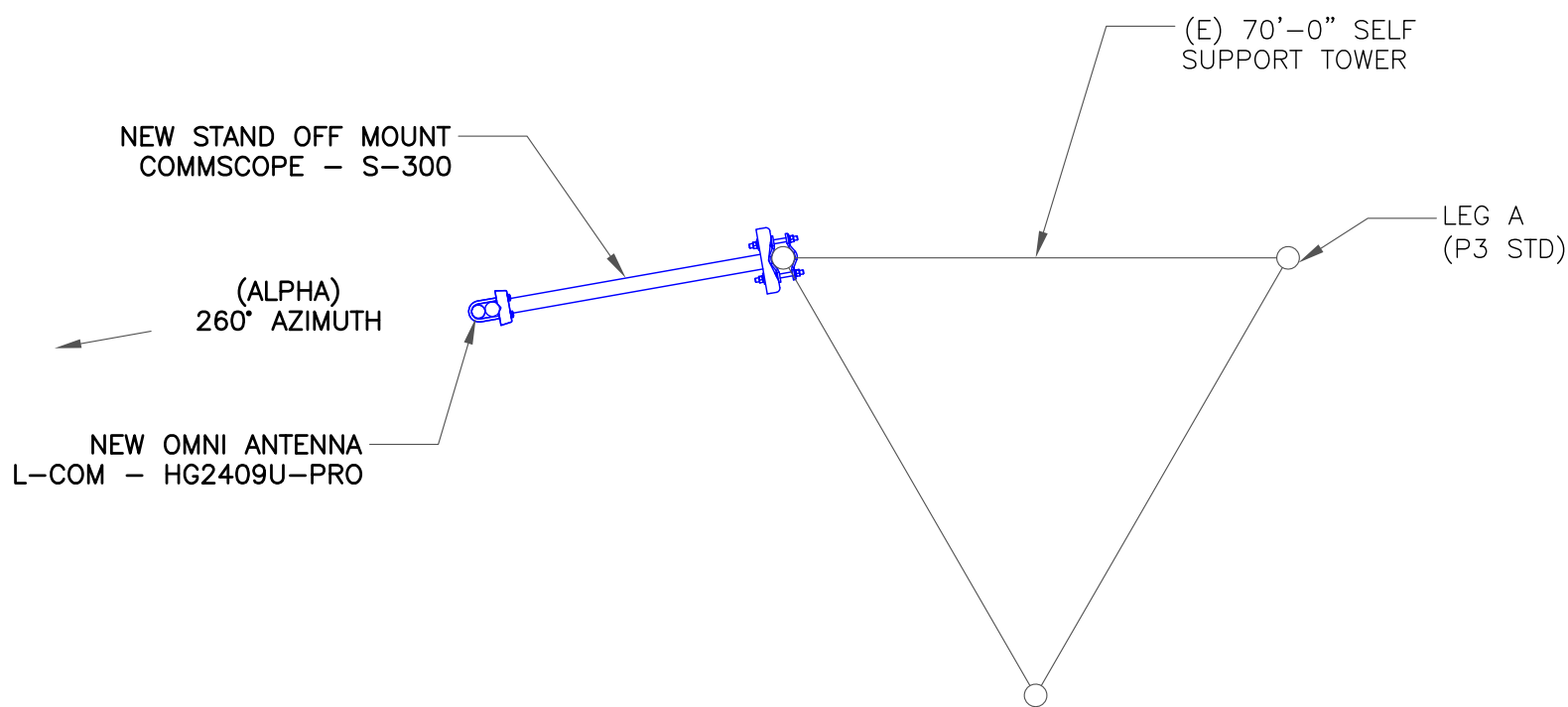
The special use approved an 80 tower (AL-08-019).

RF SCHEDULE							
ITEM	MANUFACTURER	PART NUMBER	SUPPLIER	QUANTITY	LENGTH	RAD CENTER	AZIMUTH
OMNI ANTENNA	L-COM	HG2409U-PRO	CUSTOMER	1	32"	49'-0"	260°
COAX	COMMSCOPE	LDF5-50A (1) 7/8"	CONTRACTOR	1	65'-0"±	N/A	N/A
COAX JUMPER (ANTENNA)	COMMSCOPE	LDF4-50A 1/2"Ø	CONTRACTOR	1	3'-0"±	N/A	N/A
COAX JUMPER (EQUIPMENT)	COMMSCOPE	LDF4-50A 1/2"Ø	CONTRACTOR	1	3'-0"±	N/A	N/A

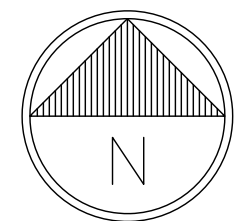
- CONTRACTOR SHALL SUPPLY ALL CONNECTORS WHICH ARE TO BE COMMSCOPE, N TYPE.
- MINIMIZE LENGTH OF JUMPERS.



2 NEW ANTENNA ELEVATION  
SCALE: NOT TO SCALE



3 NEW ANTENNA LAYOUT  
SCALE: NOT TO SCALE



10301 MEANLEY DRIVE  
SAN DIEGO, CA 92131



2055 S. STEARMAN DRIVE  
CHANDLER, AZ 85286

INGENU SITE NUMBER:  
**US-DEN-3002B**

BU #: 877090  
**FILL-IN/ COLORADO SPGS/  
CSP154**

8150 BLACK FOREST ROAD  
COLORADO SPRINGS, CO  
80920

EXISTING 70'-0" SELF  
SUPPORT TOWER

ISSUED FOR:

REV	DATE	DRWN	DESCRIPTION	DES./QA
A	03/28/17	JAS	PRELIMINARY	LMR
B	04/12/17	JAS	PRELIMINARY	LMR

**THIS DOCUMENT IS  
PRELIMINARY IN  
NATURE AND IS NOT A  
FINAL, SIGNED AND  
SEALED DOCUMENT**

IT IS A VIOLATION OF LAW FOR ANY PERSON,  
UNLESS THEY ARE ACTING UNDER THE DIRECTION  
OF A LICENSED PROFESSIONAL ENGINEER,  
TO ALTER THIS DOCUMENT.

SHEET NUMBER:

**C-2**

REVISION:

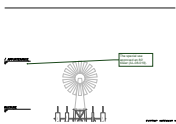
**B**

# Markup Summary

dsdruiz (2)



**Subject:** File Attachment  
**Page Label:** 1  
**Lock:** Locked  
**Author:** dsdruiz



**Subject:** Callout  
**Page Label:** 1  
**Lock:** Locked  
**Author:** dsdruiz

The special use approved an 80' tower (AL-08-019).