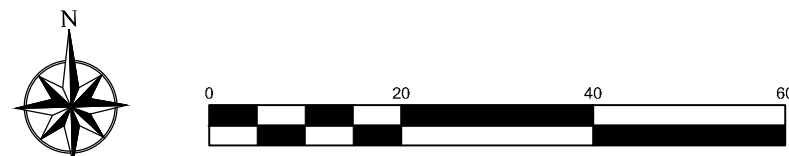


LANDSCAPE PLAN
SCALE: 1" = 20'



PLANT SCHEDULE

TREES	QTY	BOTANICAL / COMMON NAME	SIZE
	6	Celtis occidentalis / Common Hackberry	1.5" B&B
	6	Gleditsia triacanthos inermis 'Shademaster' TM / Shademaster Locust	1.5" B&B
	7	Juniperus scopulorum 'Moonglow' / Moonglow Juniper	6" B&B
SHRUBS	QTY	BOTANICAL / COMMON NAME	SIZE
	13	Aronia melanocarpa 'Iroquis Beauty' / Dwarf Chokeberry	5 gal
	17	Chamaebatiaria millefolium 'Fernbush' / Fernbush	5 gal
	9	Juniperus scopulorum 'MOONGLOW' / UPRIGHT Juniper	10 gal
	11	Physocarpus opulifolius 'Diablo' / Diablo Ninebark	5 gal
	27	Physocarpus opulifolius 'Little Devil' / Dwarf Purple Ninebark	5 gal
	31	Prunus besseyi 'Pawnee Buttes' / Sand Cherry	5 gal
	9	Rhus aromatica 'Gro-Low' / Gro-Low Fragrant Sumac	5 gal
GRASSES	QTY	BOTANICAL / COMMON NAME	SIZE
	62	Bouteloua gracilis 'Blonde Ambition' / Blue Grama	1 gal
	29	Sporobolus wrightii / Big Sacaton	1 gal

QTY FOR REFERENCE ONLY.
VERIFY ALL COUNTS PER PLAN

PLANT SCHEDULE

GROUND COVERS	QTY	BOTANICAL / COMMON NAME	SIZE
	6,520 sf	ROCK MULCH / 3/4" TAN RIVER ROCK PLACE TO A UNIFORM DEPTH OF 3"	mulch
MULCHES	QTY	BOTANICAL / COMMON NAME	SIZE
	8,014 sf	ROCK MULCH / 2-4" RIVER ROCK PER OWNER APPROVAL.	mulch
SOD/SEED	QTY	BOTANICAL / COMMON NAME	SIZE
	5,547 sf	NATURALIZED SEED AREAS / El Paso County All Purpose Low Grow Mix SEE SHEET 7 / L2.0. IRRIGATED SEED MIX.	seed

REFERENCE NOTES SCHEDULE

SYMBOL	DESCRIPTION	QTY
	PLACE SHREDDED CEDAR MULCH AROUND BASE OF ALL PERENNIALS AND GRASSES IN LARGE COBBLE AREAS. MASSED PERENNIALS TO RECEIVE LARGE RING AROUND ENTIRE GROUP (TYP). WOOD MULCH NOT REQUIRED AROUND BASE OF PLANTS LOCATED IN PEA GRAVEL.	
	PLACE PLANTS TO PROVIDE MIN. 2' CLEARANCE FROM BACK OF CURB AT MATURE SPREAD.	
SYMBOL	32 LANDSCAPE IMPROVEMENTS DESCRIPTION	QTY
	14 G ROLL TOP STEEL EDGING, STAKED 30" OC MAX.	1,227 LF

SITE CATEGORY REQUIREMENTS

ROADWAY LANDSCAPING (or Double Frontage Lot Streetscapes)					
Street Name or Zone Boundary (elev.) Bent Grass Meadows	Street Classification Non-Arterial	Setback Width Req. / Prov. 10 / 10	Linear Footage 470	Tree/Feet Required 1 / 30	No. of Trees Req. / Prov. 15 / 6*
Shrub and Orn. Grass Substitutes 0 / 0	Setback Plant Abbrev. Denoted on Plan -	Percent Ground Plane Veg. Req. / Provided 75% / 75%	High Water-use Turf % 0%		
*Numerous easements and utilities preclude tree planting in these areas					
PARKING LOTS					
No. of Vehicle Spaces Provided 92	Shade Trees (1/15) Required / Provided 6 / 6	Vehicle Lot Frontage (s) Meridian Park Bent Grass Meadows 81 306	Length of Frontage (ft.) (excluding driveways) 81 306	2/3 Length of Frontage (ft.) 55 229	
Frontage Screening Provided (LF) 70 235	Evergreen LF Req.(50%) / Prov. 35 / 35 118 / 125	Length of Screening Wall or Berm Provided -	Vehicle Lot Plant Abbr. on Plan N/A N/A	Percent Ground Plane Veg. Req. / Provided 75% / 80% 75% / 80%	
INTERNAL LANDSCAPING					
Net Site Area (SF) (less public R.O.W.) 80,894	Percent Min. Internal Area (%) 5%	Internal Area (SF) Required / Provided 4,045 / (18,562)	Internal Trees (1/500 SF) Required / Provided 8 / 8	Internal Trees (1/500 SF) Shrub Sub Req/Prov 0 / 0	
Internal Plant Abbr. Denoted on Plan IN	Percent Ground Plane Veg. Req. / Provided 75% / 86%				
LANDSCAPE BUFFERS & SCREENS - N/A					
Street Name or Property Line (elev.)	Width (in. ft.) Req./ Prov.	Linear Footage	Buffer Trees (1/25) Required / Provided	Evergreen Trees Req.(50%) / Provided	Length of 6 ft. Opaque Structure Req. / Prov.

BENT GRASS PLAZA PEYTON, COLORADO

FINAL LANDSCAPE PLAN

PROJ. NO.:
DATE: 09.28.23
SCALE: See Sheet
DRAWN: JRO
CHKD BY: NAM
SHEET L10

REVISIONS:

NDS
NATURAL DESIGN SOLUTIONS
Landscape Architecture
Land Planning • Irrigation Design
8539 Oak Drive, Longmont, CO 80503
(303) 403-0335 • info@naturaldesigns.com

GENERAL NOTES

(Note: All references to "Contractor" are specific to "Landscape Contractor" unless notified as "General or other type of Contractor")

1. CONTRACTOR IS RESPONSIBLE FOR VERIFYING QUANTITIES OF MATERIALS NEEDED TO COMPLETE THIS PLAN IN THE FIELD. NOTIFY LANDSCAPE ARCHITECT OF ANY DISCREPANCIES BETWEEN THE DRAWINGS AND CONDITIONS IN THE FIELD. SUBSTITUTIONS OF PLANT MATERIAL ARE NOT ALLOWED WITHOUT APPROVAL FROM LANDSCAPE ARCHITECT GIVEN PRIOR TO INSTALLATION. GRAPHIC QTY'S. PREVAIL OVER WRITTEN QTY'S. PRIOR TO COMMENCEMENT OF WORK THE LANDSCAPE CONTRACTOR SHALL CONTACT OWNERS REPRESENTATIVE FOR SPECIFIC INSTRUCTIONS RELEVANT TO THE SEQUENCING AND SCOPE OF WORK.
2. CONTRACTOR IS RESPONSIBLE FOR INSTALLING ALL LANDSCAPE SHOWN ON THIS PLAN. ANY DEFICIENCIES OR DEVIATIONS FROM THIS PLAN ARE TO BE APPROVED BY OWNER'S REPRESENTATIVE OR LANDSCAPE ARCHITECT. ANY CHANGES FROM THE APPROVED PLANS MAY REQUIRE APPROVAL FROM THE CITY OR COUNTY PLANNING DEPARTMENTS.

LANDSCAPE CONTRACTOR TO PROVIDE ALL LABOR AND MATERIALS NECESSARY TO FURNISH SCOPE OF WORK AS SHOWN PER PLAN.

3. EXISTING TOPSOIL IS TO BE STOCKPILED AND USED TO ESTABLISH FINAL GRADES WITHIN LANDSCAPE AREAS. ALL STOCKPILED SOIL MUST BE CLEAR OF WEEDS, ROCKS AND DEBRIS BEFORE REUSE. ALL BERMED PLANTING BEDS TO BE CREATED WITH IMPORTED TOPSOIL.

4. GENERAL CONTRACTOR TO RE-SPREAD STOCKPILED SOIL AND ESTABLISH ROUGH GRADE CONDITIONS TO THE FOLLOWING SPECIFICATIONS:
- A. 1" BELOW CURB FOR ALL SEEDED AREAS.
- B. 2.5" BELOW CURB FOR ALL SODDED AREAS.
- C. 4" BELOW CURB FOR ALL PLANTING, ROCK AND MULCH BEDS.
5. CONTRACTOR TO TILL PARKING LOT ISLANDS TO A DEPTH OF 30".

6. AMEND ALL PLANTING BEDS WITH CLASS 1 COMPOST. PROVIDE 4 CY PER 1000 SF FOR TURF AREAS; 2 CYDS PER 1000 SF FOR SEEDED NATIVE AREAS; AND PROVIDE 2:1 MIXTURE OF AMENDMENT FOR FILL DIRT IN TREES/SHRUB HOLES. MINIMUM TILL DEPTH OF 6".

7. FINE GRADE TO BE ESTABLISHED BY LANDSCAPE CONTRACTOR. FINE GRADE SHALL BE FREE OF ROCKS AND DEBRIS ½" AND GREATER. FINE GRADE IN SODDED AREAS SHALL BE FREE FROM ROCKS AND DEBRIS ¼" AND GREATER. CONTRACTOR TO REPORT ANY POOR DRAINAGE CONDITIONS PRIOR TO CONSTRUCTION.

8. CONTRACTOR IS TO PROVIDE VERIFICATION THAT ALL SOD IS OF THE SPECIES SHOWN ON THIS PLAN. NO SUBSTITUTIONS WILL BE ALLOWED. SOD TO BE LAID WITH TIGHT STAGGERED EDGES AND BE ROLLED AFTER INSTALLATION. SEEDED AREAS CANNOT BE SUBSTITUTED WITH SOD.

9. MULCHS: ALL PLANTING BEDS THAT CALL FOR WOOD/ORGANIC MULCH TO RECEIVE 4" ORGANIC SHREDDED BARK MULCH. SHREDDED MULCH IS TO BE OF FIBROUS MATERIAL, NOT CHIPS OR CHUNKS. NO FABRIC IS TO BE PLACED UNDER WOOD/ORGANIC MULCH. TREES IN TURF AND NATIVE GRASS AREAS TO RECEIVE 4" DIAMETER OF WOOD MULCH, 3" DEPTH. SHRUBS AND GROUNDCOVERS IN NATIVE GRASS AREAS TO RECEIVE 3" DIAMETER OF WOOD MULCH, 3" DEEP. ALL MULCHED BEDS ARE TO BE SPRAYED WITH WATER AFTER INSTALLATION TO HELP MULCH TO MAT DOWN. ALL BEDS MUST BE MULCHED.

TREES IN COBBLE/ROCK MULCH TO RECEIVE 4" DIAMETER OF WOOD MULCH, 3" DEEP. SHRUBS AND GROUNDCOVERS IN COBBLE/ROCK MULCH AREAS TO RECEIVE 3" DIAMETER OF WOOD MULCH, 3" DEEP. NO FABRIC UNDERLAYMENT IN WOOD MULCH AREAS.

ALL PLANTING BEDS THAT CALL FOR COBBLE/ROCK MULCH TO RECEIVE MIN. 3" DEPTH OF MULCH. USE QUICK RELEASE ORGANIC PRE-EMERGENT HERBICIDE FOR ALL MULCHED AND PERENNIAL/PLANTING BEDS (AND FOR COBBLE/AGGREGATE AREAS WITH SLOPES EXCEEDING 3:1 GRADE).

10. SEED MIX INSTALLATION: CONTRACTOR TO DRILL SEED WITH BRILLION TYPE APPLICATOR AND APPLY 'SOIL GUARD' BONDED FIBER MATRIX (BFM), WHERE INDICATED PER PLAN AND SCHEDULES. APPLY SEED IN TWO DIRECTIONS (PERPENDICULAR OF THE OTHER). ADD SOIL GUARD BFM FOR DRILL SEEDING WHERE NOTED PER PLAN AND ON ALL SLOPES 5:1 TO 3:1. FOR AREAS WITH 3:1 SLOPES OR GREATER CONTRACTOR TO USE SOIL GUARD APPLICATION ONLY (IN LIEU OF HYDROMULCH) CONTRACTOR TO SPOT SEED NON-GERMINATING AREAS (3) MONTHS AFTER INITIAL SEED APPLICATION. CONTRACTOR TO RE-SEED ALL BARE AREAS (6"x6") AND GREATER AFTER (6) MONTHS FROM SEED GERMINATION OR AT THE BEGINNING OF THE FOLLOWING GROWING SEASON. PRIOR TO THE 11-MONTH WARRANTY INSPECTION RE-APPLY SOIL GUARD AND SEED MIX TO ALL BARE AREAS (6"x6" OR GREATER) AND TO ALL BARE AREAS (4"x4" OR GREATER) ON ALL SLOPES 3:1 AND GREATER.

11. REMOVED DEAD TWIGS AND BRANCHES FROM ALL NEW AND EXISTING PLANT MATERIAL IN A MANNER THAT DOES NOT CHANGE THE NATURAL HABIT OF THE PLANT MATERIAL. SCARES OF 1" OR MORE SHALL BE PAINTED WITH ORGANIC TREE PAINT. CENTRAL LEADERS SHALL NOT BE REMOVED AT ANY TIME. NEWLY PLANTED TREES WITHOUT CENTRAL LEADERS WILL BE REJECTED.

12. CONTRACTOR TO APPLY FERTILIZER IN SPRING & LATE SEPTEMBER. WATER THOROUGHLY AFTER APPLICATION OF FERTILIZERS.

ALL SEEDED AND SODDED AREAS TO HAVE RECOMMEND FERTILIZER APPLICATIONS ADDED 2 TO 3 WEEKS AFTER SEEDLING EMERGENCE, AND ONCE IN MID TO LATE JUNE, IN EARLY TO MID AUGUST, AND ONCE IN LATE SEPTEMBER. SEEDED AND SODDED AREAS ARE ALSO TO RECEIVE .5 LB. OF ELEMENTAL SULFUR (OR EQUIVALENT MATERIAL) PER 1,000 S.F. APPLIED IN LATE SEPTEMBER. WATER THOROUGHLY AFTER APPLICATION OF FERTILIZERS.

13. ALL PLANT MATERIALS AND UTILITIES ARE SHOWN AT AN APPROXIMATE LOCATIONS. THE CONTRACTOR MAY NEED TO ADJUST LOCATIONS OF PLANT MATERIAL TO ADHERE TO SPECIFIC ON-SITE CONDITIONS AND CODE REQUIREMENTS. ALL TREES AND SHRUBS TO BE PLACES AT 2' MINIMUM BACK OF CURB. CONTRACTOR TO CALL FOR UTILITY LOCATES BEFORE PLANTING (TYP.) 1-800-922-1987, OR CALL 811 BEFORE YOU DIG!

14. ALL CONTRASTING GROUND COVER MATERIALS SHALL UTILIZE PROFESSIONAL GRADE STEEL (WITH ROLLED OR SAFETY CAP TOP EDGE), BRICK, STONE, DECORATIVE CONCRETE OR OTHER EDGING APPROVED BY THE MRC TO DEFINE THE AREAS AND PROVIDE A CLEAN MAINTENANCE EDGE. USE PERFORATED EDGING SEGMENTS TO OBTAIN POSITIVE DRAINAGE FOR ALL DRAINAGE SWALES OR AREAS OF STANDING WATER.

15. CONTRACTOR TO PROVIDE COBBLE & UNDERLAYMENT FOR BUILDING DRAINS AND SWALES THROUGH LANDSCAPED AREAS.

16. ALL REQUIRED LANDSCAPING TO BE INSTALLED PRIOR TO ISSUANCE OF THE CERTIFICATE OF OCCUPANCY.

17. ALL NURSERY STOCK TO CONFORM TO THE AMERICAN STANDARD FOR NURSERY STOCK (ANSI Z60.1) AND THE COLORADO NURSERY ACT.

18. CONTRACTOR IS RESPONSIBLE FOR CONTACTING LANDSCAPE ARCHITECT FOR ALL REQUIRED INSPECTIONS. PROVIDE AT LEAST 48 HOURS NOTICE TO SCHEDULE AN INSPECTION. REQUIRED INSPECTIONS INCLUDE A LANDSCAPE LAYOUT AND PLANT MATERIAL VERIFICATION AND PLACEMENT INSPECTION, IRRIGATION MAIN LINE INSPECTION, LANDSCAPE AND IRRIGATION PUNCH LIST INSPECTION, AND A LANDSCAPE AND IRRIGATION FINAL INSPECTION.

19. CONTRACTOR IS TO PROVIDE A ONE YEAR WARRANTY ON ALL PLANT MATERIAL, TURF, IRRIGATION COMPONENTS, AND WORKMANSHIP. REPLACEMENT PLANT MATERIALS SHALL BE OF THE SAME SPECIES AND SIZE AS THE DECAYED OR DEAD PLANT MATERIAL. WARRANTY IS VOID IF PLANT MATERIAL ARE UNDER OR OVER-WATERED/FERTILIZED, DAMAGED BY VANDALISM OR NEGLECTED BY OWNER AFTER FINAL MAINTENANCE PERIOD AND FINAL ACCEPTANCE IS PROVIDED.

REMOVE ALL TREE STAKING MATERIALS AT END OF WARRANTY, PRIOR TO FINAL ACCEPTANCE

20. MAINTENANCE: THE OWNER OF THIS PROPERTY AND ANY FUTURE OWNERS SHALL BE RESPONSIBLE FOR THE PROPER LANDSCAPE AND IRRIGATION MAINTENANCE OF THIS SITE AND ANY RIGHT OF WAY AREAS BETWEEN THE CURB AND PROPERTY LINES OF THIS SITE. MAINTENANCE OF THIS SITE INCLUDES, BUT IS NOT LIMITED TO, IRRIGATION INSPECTIONS AND ADJUSTMENTS, IRRIGATION SYSTEM SHUT DOWN AND START UP, IRRIGATION LEAK REPAIR, LANDSCAPE WEEDING, MOWING, SEEDING, FERTILIZATION, WOOD MULCH AND ROCK COVER REPLACEMENT, PRUNING, AND PLANT MATERIAL REPLACEMENT (INCLUDING ANNUAL BEDS). ALL MAINTENANCE SHOULD BE IN ACCORDANCE WITH STANDARDS SPECIFIED WITHIN THE "ALCC SPECIFICATIONS HANDBOOK" REVISED EDITION- 1996. OWNER SHOULD CONTACT LANDSCAPE CONTRACTOR OR LANDSCAPE ARCHITECT REGARDING ANY QUESTIONS RELATING TO THE LANDSCAPE OR IRRIGATION MAINTENANCE OF THIS SITE.

STREET TREES, STREETSCAPE IMPROVEMENTS AND VEGETATION WITHIN THE CITY ROW SHALL BE MAINTAINED BY THE ABUTTING PROPERTY OWNER

IRRIGATION NOTES
ALL TURF AREAS TO BE IRRIGATED WITH AN AUTOMATIC POP-UP SPRINKLER SYSTEM. ALL SHRUBS BEDS TO BE IRRIGATED WITH AUTOMATIC DRIP IRRIGATION SYSTEM. THE IRRIGATION SYSTEM IS TO BE ADJUSTED TO MEET THE NEEDS OF INDIVIDUAL PLANT MATERIAL.

IRRIGATION SYSTEM TO BE ADJUSTED AS NEEDED FOR PLANT ESTABLISHMENT FOR A PERIOD OF AT LEAST ONE (1) YEAR.

ADJUSTMENTS TO BE MADE AFTER ESTABLISHMENT BASED ON SPECIFIC PLANT REQUIREMENTS. SEE SUGGESD RUN TIMES PROVIDED WITHIN THESE PLANS.

DESIGN OF IRRIGATION SYSTEMS TO MEET OR EXCEED LOCAL REQUIREMENTS AND INDUSTRY STANDARDS. CONSTRUCTION DOCUMENTS SUITABLE FOR DEVELOPMENT COORDINATION TO BE PROVIDED.

IRRIGATION SYSTEM TO BE DESIGNED USING APPROPRIATE COMPONENTS FOR PLANT MATERIAL, AND WILL INCLUDE A SMART ET CONTROLLER AND RAIN SENSOR.

ALL NATIVE SEED AREAS TO BE PERMANENTLY IRRIGATED.

LANDSCAPE IMPROVEMENTS AND MAINTENANCE SHALL BE THE RESPONSIBILITY OF OWNER, AND/OR THEIR ASSIGNS

ALL STREET TREES AND STREETSCAPE IMPROVEMENTS LOCATED IN THE ROW WILL BE MAINTAINED BY THE PROPERTY OWNER

Table 5-1. El Paso County Conservation District All-Purpose Mix for Upland, Transition and Permanent Control Measure Areas

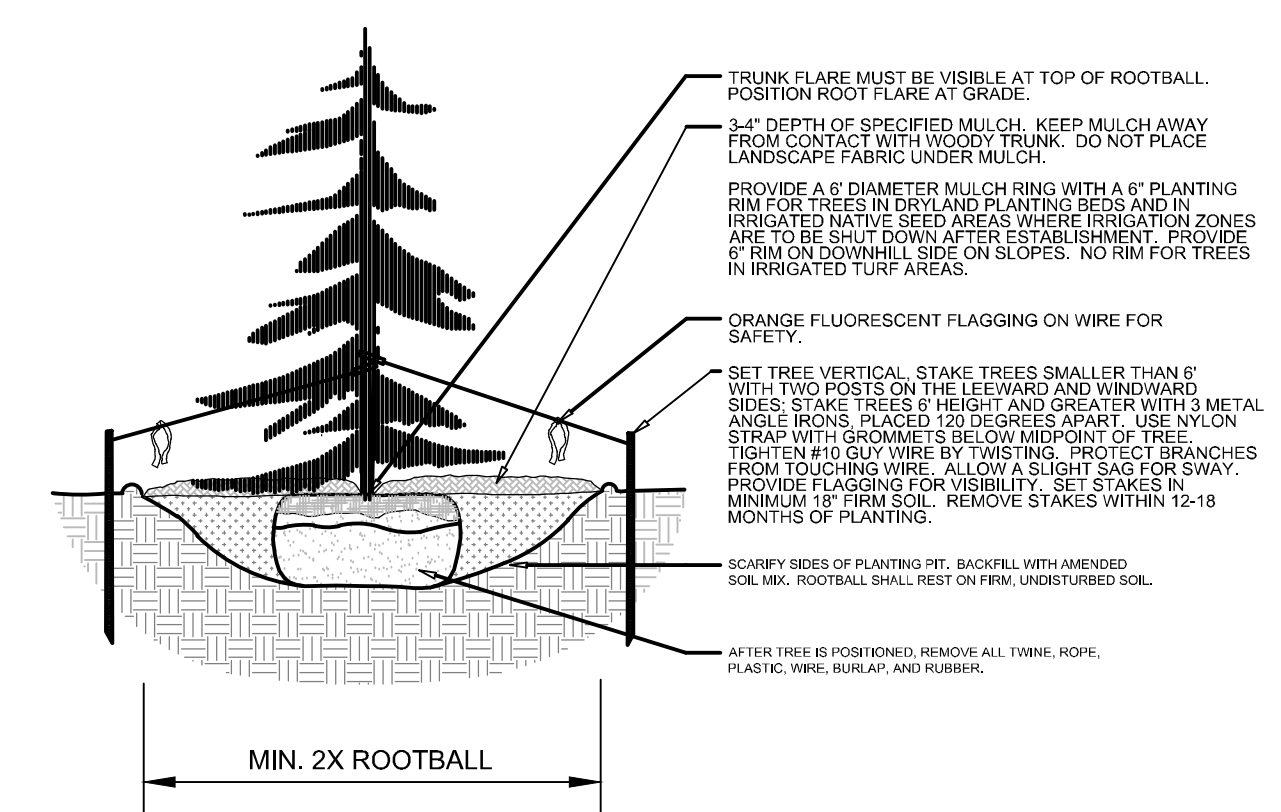
Common Name	Scientific Name	Growth Season / Form	% of Mix	Pounds PLS		
				• Irrigated broadcast • Irrigated hydroseeded	• Non-irrigated broadcast • Non-irrigated hydroseeded • Irrigated drilled	• Non-irrigated drilled
Bluestem, big	<i>Andropogon gerardii</i>	Warm, sod	20	4.4	2.2	1.1
Gramma, blue	<i>Bouteloua gracilis</i>	Warm, bunch	10	0.5	0.25	0.13
Green needlegrass	<i>Nassella viridula</i>	Cool, bunch	10	2	1	0.5
Wheatgrass, western	<i>Panicum smithii</i>	Cool, sod	20	6.4	3.2	1.6
Gramma, sideoats	<i>Bouteloua curtipendula</i>	Warm, bunch	10	2	1	0.5
Switchgrass	<i>Panicum virgatum</i>	Warm, bunch/sod	10	0.8	0.4	0.2
Prairie sandreed	<i>Calamagrostis longifolia</i>	Warm, sod	10	1.2	0.6	0.3
Yellow indiangrass	<i>Sorghastrum nutans</i>	Warm, sod	10	2	1	0.5
Seed rate (lbs PLS/acre)				19.3	9.7	4.8

Table 5-2. El Paso County All-Purpose Low Grow Mix for Upland and Transition Areas

Common Name	Scientific Name	Growth Season / Form	% of Mix	Pounds PLS		
				• Irrigated broadcast • Irrigated hydroseeded	• Non-irrigated broadcast • Non-irrigated hydroseeded • Irrigated drilled	• Non-irrigated drilled
Buffalograss	<i>Buchloe dactyloides</i>	Warm, sod	25	9.6	4.8	2.4
Gramma, blue	<i>Bouteloua gracilis</i>	Warm, bunch	20	10.8	5.4	2.7
Gramma, sideoats	<i>Bouteloua curtipendula</i>	Warm, bunch	29	5.6	2.8	1.4
Green needlegrass	<i>Nassella viridula</i>	Cool, bunch	5	3.2	1.6	0.8
Wheatgrass, western	<i>Panicopyrum smithii</i>	Cool, sod	20	12	6	3
Droopseed, sand	<i>Sporobolus cryptandrus</i>	Warm, bunch	1	0.8	0.4	0.2
Seed rate (lbs PLS/acre)				42	21	10.3

NOTES:

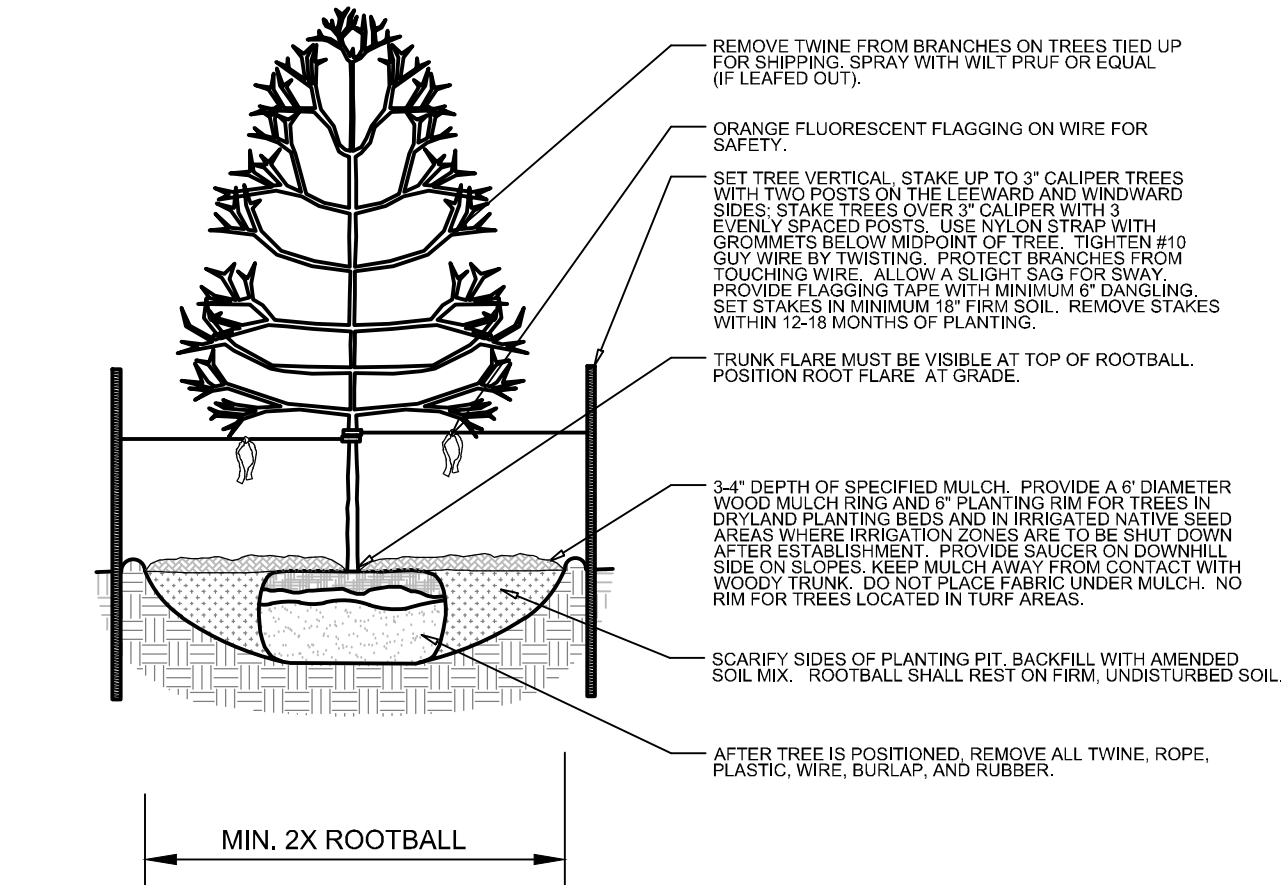
- DO NOT REMOVE OR CUT LEADER.
- PRUNE ONLY DEAD OR BROKEN BRANCHES IMMEDIATELY PRIOR TO PLANTING.
- DO NOT REMOVE ANY DOUBLE LEADER, UNLESS OTHERWISE DIRECTED BY OWNERS REPRESENTATIVE.
- KEEP PLANTS MOIST AND SHADED UNTIL PLANTING.
- AMENDED BACKFILL SHALL BE AS STATED ON THIS SHEET.
- MARK THE NORTH SIDE OF TREE IN THE NURSERY, AND ROTATE TREE TO FACE NORTH AT THE SITE WHENEVER POSSIBLE.
- PINE AND SPRUCE TREES TO BE SPRAYED FOR IPS BARK BEETLE PRIOR TO PLANTING. COORDINATE WITH CITY FORESTRY
- FOR CURRENT INSECT AND DISEASE RECOMMENDATIONS PRIOR TO PLANTING.
- ALL TREES TO BE DEEP WATERED AT TIME OF PLANTING.



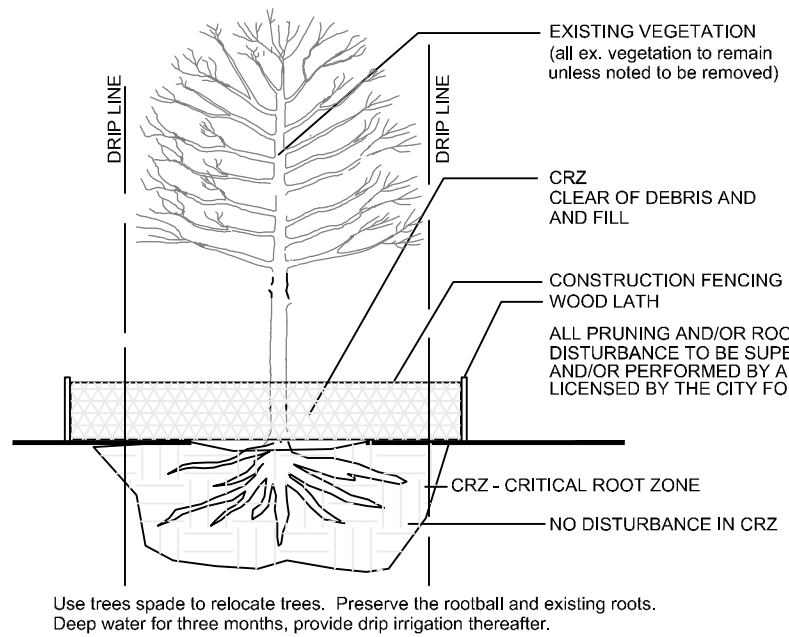
L2.0 EVERGREEN TREE PLANTING DETAIL
NOT TO SCALE SECTION

NOTES:

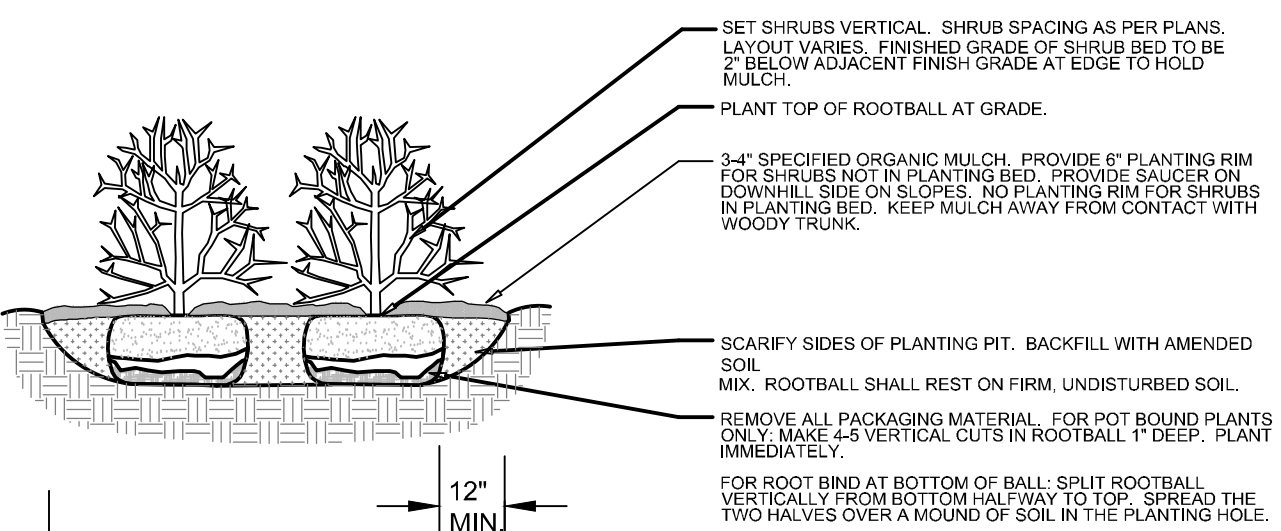
- MARK THE NORTH SIDE OF TREE IN THE NURSERY, AND ROTATE TREE TO FACE NORTH AT THE SITE WHENEVER POSSIBLE.
- AT TIME OF PLANTING, DO NOT REMOVE OR CUT LEADER AND PRUNE ONLY DEAD OR BROKEN BRANCHES, CROSS OVER BRANCHES, AND WEAK OR NARROW CROTCHES. SOME INTERIOR TWIGS AND LATERAL BRANCHES MAY BE PRUNED. HOWEVER, DO NOT REMOVE THE TERMINAL BUDS OF BRANCHES THAT EXTEND TO THE EDGE OF THE CROWN.
- STRUCTURAL PRUNING SHOULD NOT BEGIN UNTIL AFTER ESTABLISHMENT PERIOD, USUALLY TWO GROWING SEASONS.
- KEEP PLANTS MOIST AND SHADED UNTIL PLANTING.
- DO NOT FERTILIZE FOR AT LEAST ONE GROWING SEASON.
- AMENDED BACKFILL SHALL BE AS STATED ON THIS SHEET
- WRAP TRUNK ON EXPOSED SITES AND SPECIES WITH THIN BARK. USE ELECTRICAL OR DUCT TAPE, NOT TWINE.
- COORDINATE WITH CITY FORESTRY FOR CURRENT INSECT AND DISEASE RECOMMENDATIONS PRIOR TO PLANTING.
- DEEP WATER ALL PLANTS AT TIME OF PLANTING.



L2.0 DECIDUOUS TREE PLANTING DETAIL
NOT TO SCALE SECTION



L2.0 TREE PROTECTION DETAIL
NOT TO SCALE

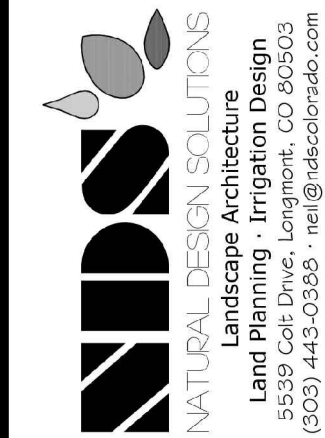


L2.0 SHRUB PLANTING DETAIL
NOT TO SCALE SECTION

BENT GRASS PLAZA PEYTON, COLORADO

LANDSCAPE DETAILS & NOTES

REVISIONS:



PROJ. NO.:
DATE: 09.28.23
SCALE: See Sheet
DRAWN: JRO
CHKD BY: NAM
SHEET L2.0