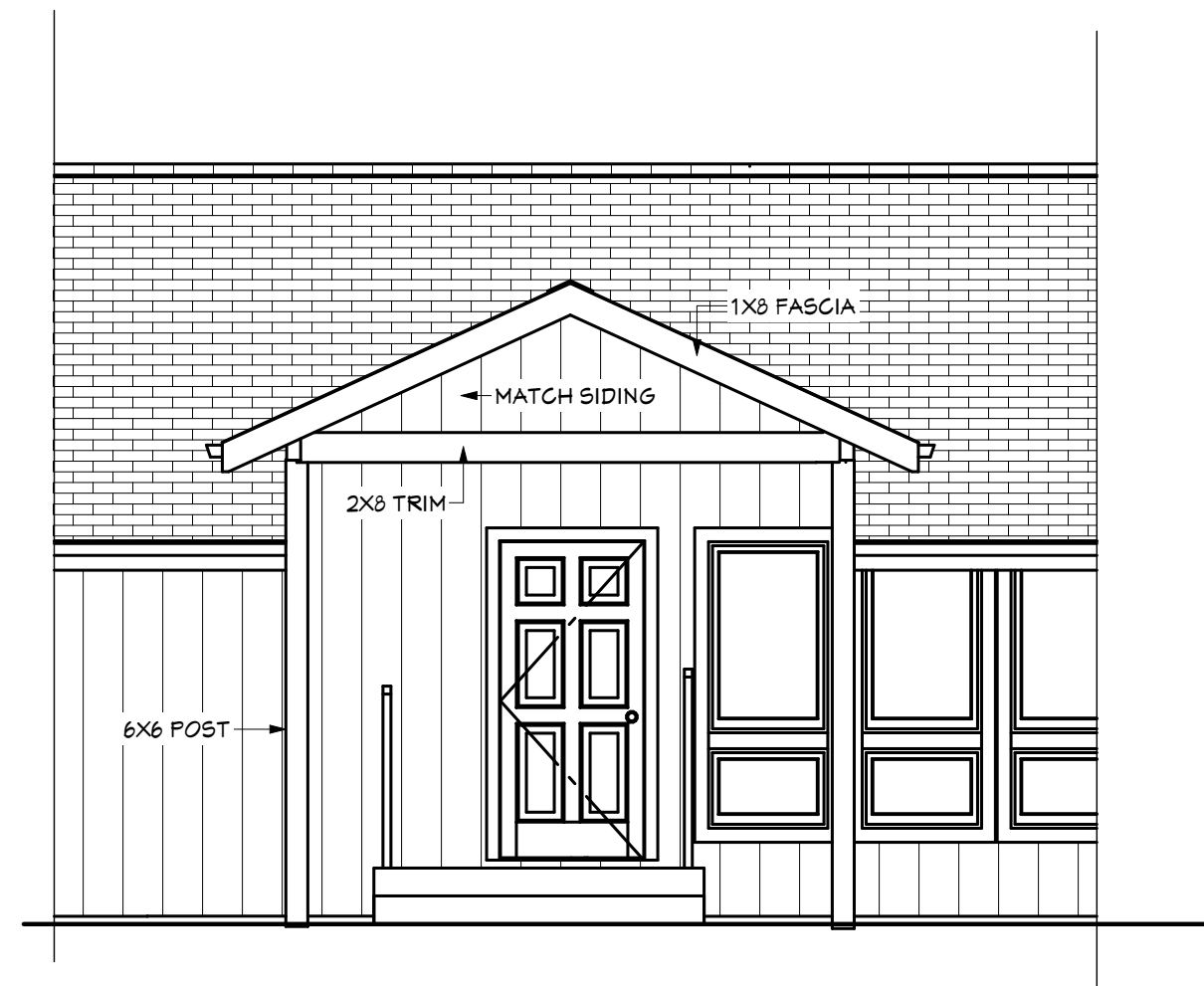


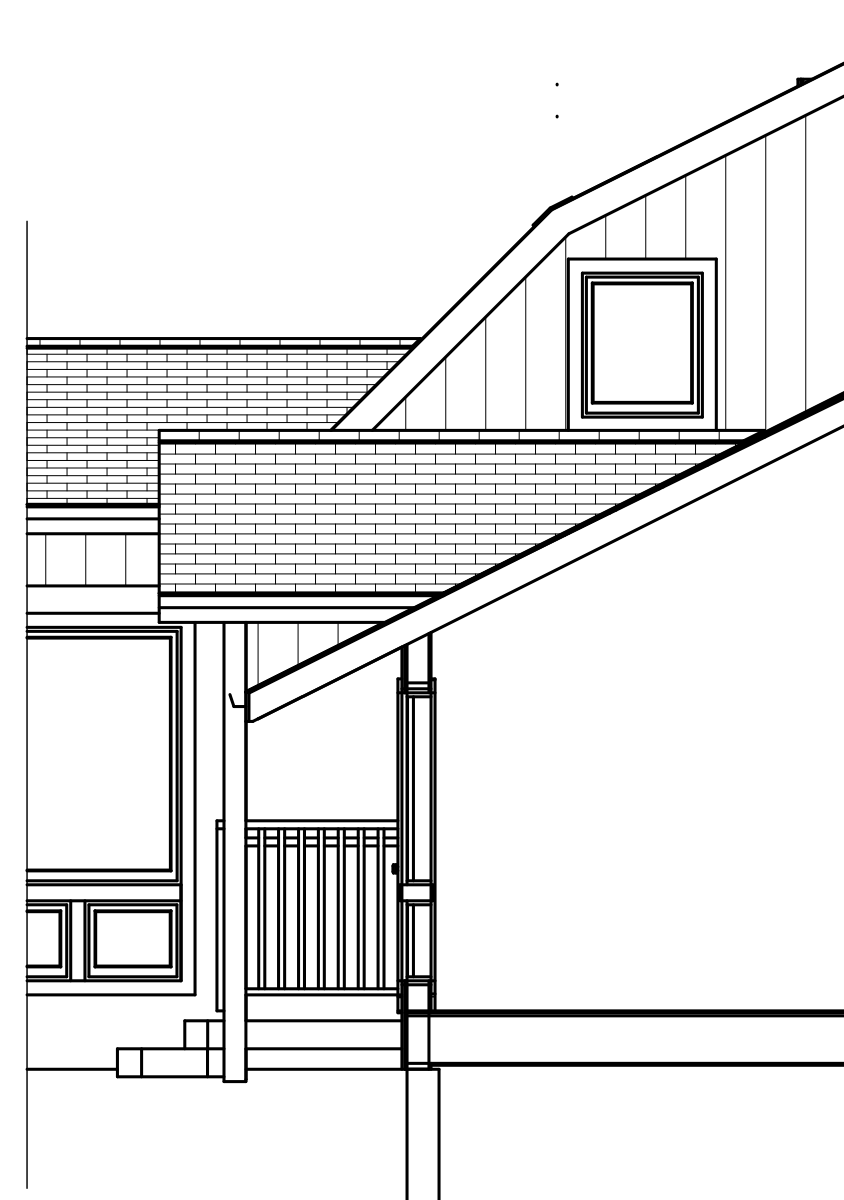
FLOOR PLAN

1/16" = 1'-0"



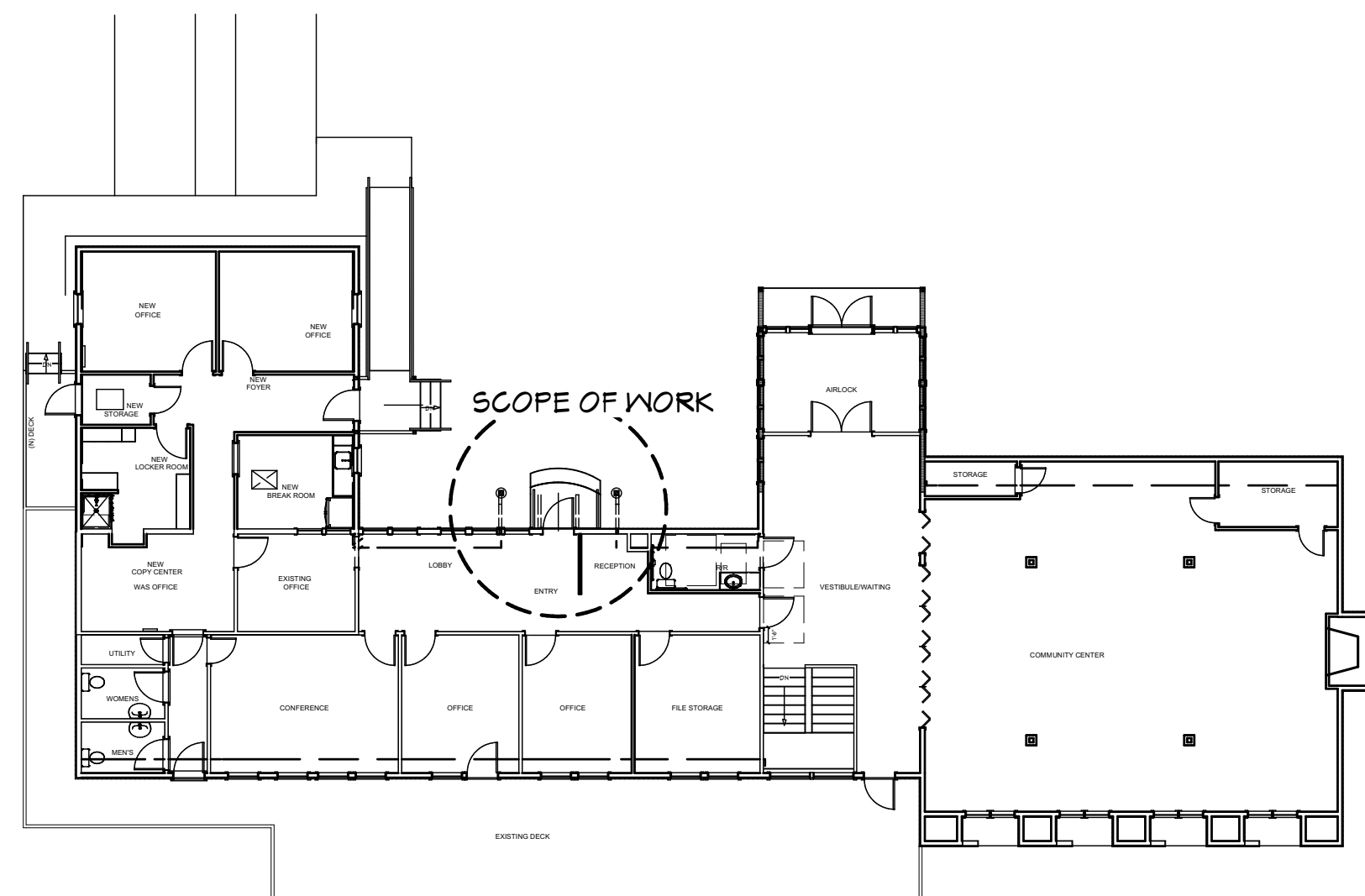
FRONT ELEVATION

1/16" = 1'-0"



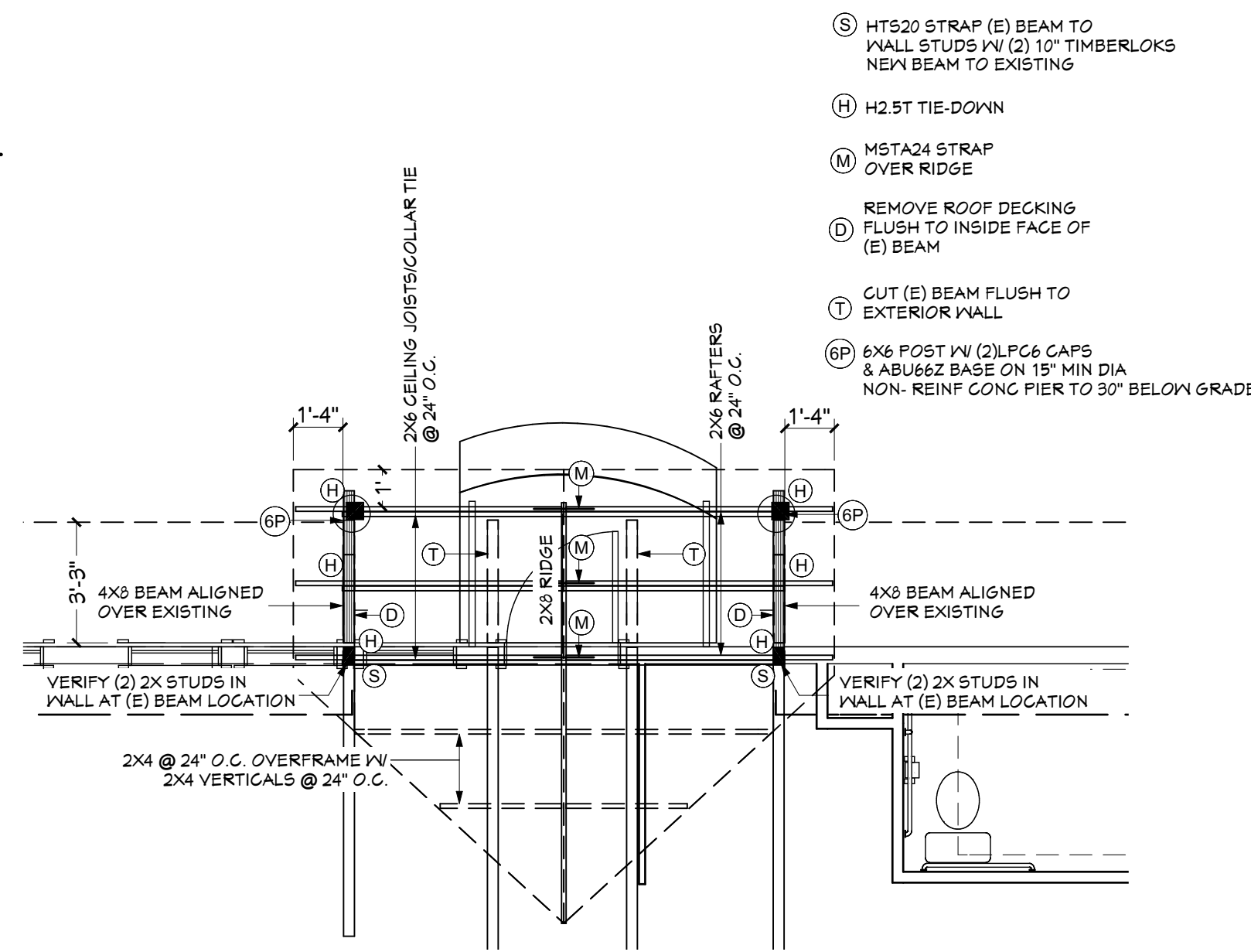
SIDE ELEVATION

1/16" = 1'-0"



KEY PLAN

1/16" = 1'-0"



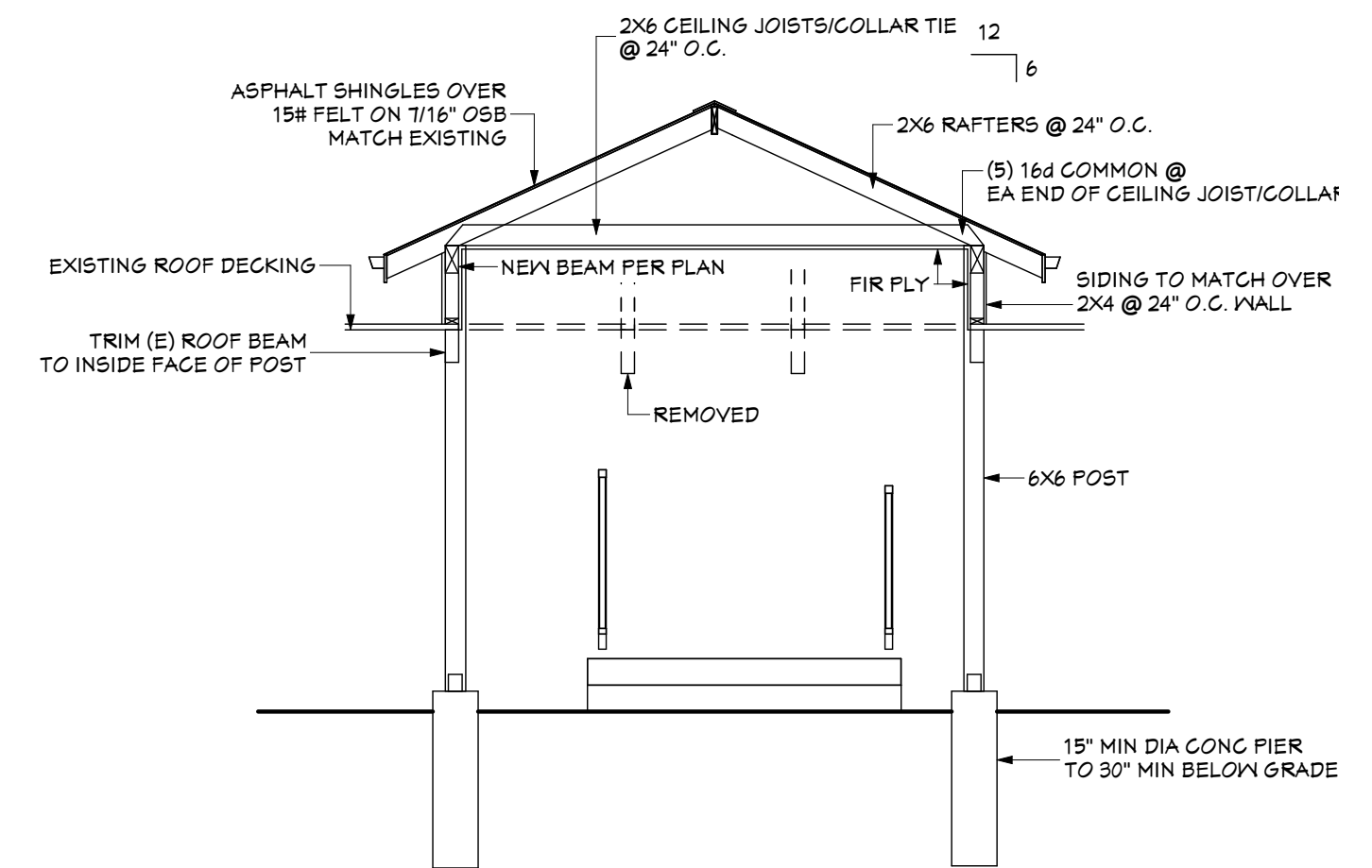
FRAMING PLAN - ROOF

1/4" = 1'-0"

- NOTES:
- ALL FRAMING LUMBER SHALL BE HF#2 OR BETTER.

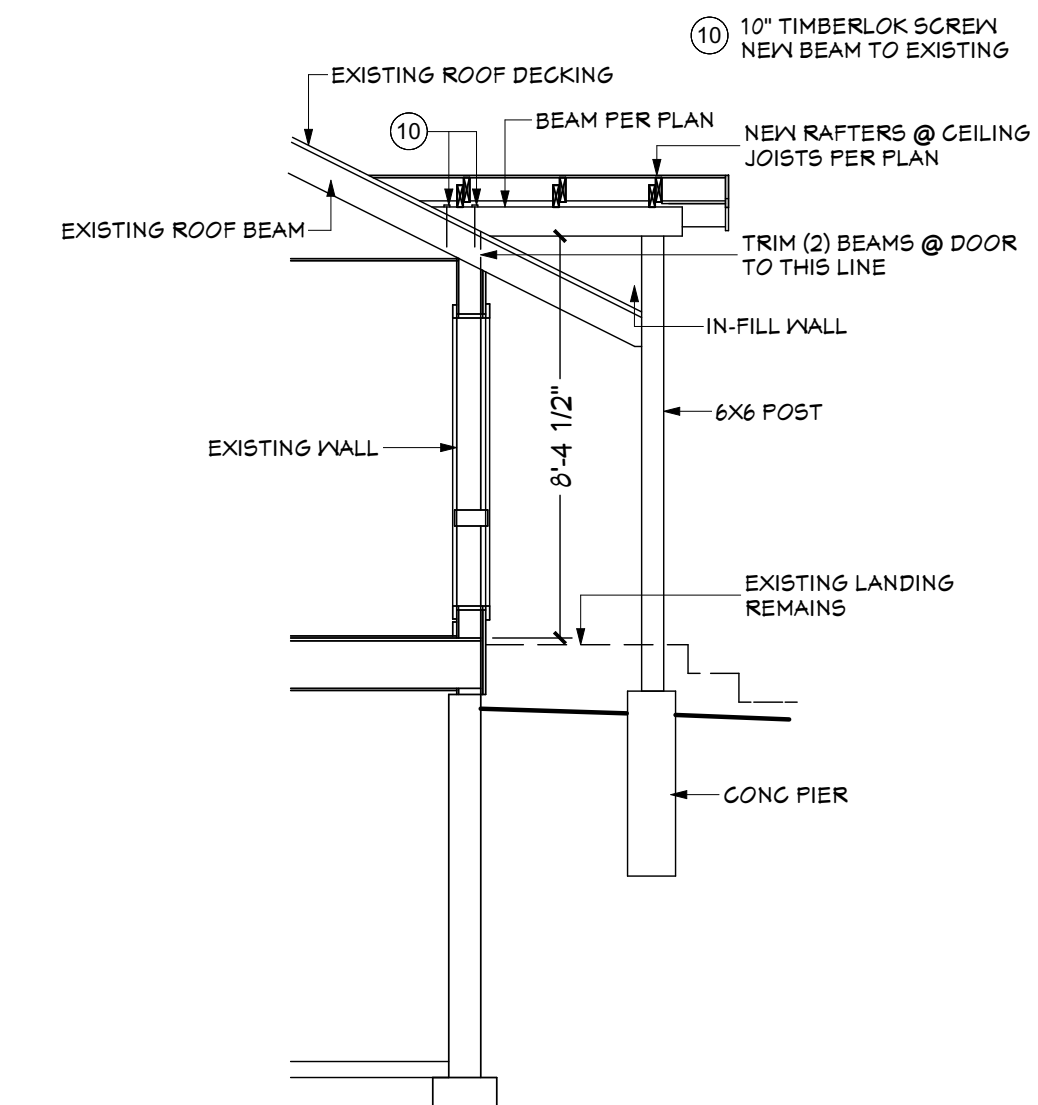


ROOF DESIGN LOADING:
LIVE LOAD: 40 LBS/ SQ. FT.
DEAD LOAD: 15 LBS/ SQ. FT.
TOTAL: 55 LBS/ SQ. FT.
WIND LOADING: 130 MPH, EXP "C"



CROSS SECTION

1/16" = 1'-0"



CROSS SECTION

1/16" = 1'-0"