



EL PASO COUNTY PLANNING & COMMUNITY DEVELOPMENT
SIGN APPLICATION

REVISOR FOR MONUMENT & GAS CANOPY

DATE: 8/3/18

Business

Name: Crelell

Address: 613

Meadowbrook Pkwy

Zone: RL

Legal Description: LDT

12194 Business

Port Elm

ESN: 01080-08-001

Type of Sign

Illuminated:

Non-Illuminated:

Valuation: \$52,502.00

Storefront Length &/or

Width: 111.78' + 40.08'

Proposed Sign Sq. Ft.

Existing Sign Sq. Ft.

Total Sign Sq. Ft. 267.66

Contractor Information

Name: Custom Lighted

Signs LLC

Address: 1840 Van Gordon

#440 Wheat Ridge, CO

Phone: 800 333

303-292-1882

Type of License: Sign

Contractor ID# 103666

Vicinity Map

Tax Schedule #
Please show major intersections.



See attached
worksheets

Sign Plan

(Please indicate dimensions and sign copy)

See attached
worksheets

009 - gas canopy

613 - store

003 - monument

Elevation Drawing

Indicate storefront length & placement of sign.

See attached
worksheets

For Planning & Community Development Use Only

Approved Date:

Denied Date:

Comments:

Resubmittal? Yes _____ No _____

Fee of \$262.00 must accompany this Application. Additional signs at time of first Application are \$125.00. Make checks payable to El Paso County.

Circle K
613 Meadowbrook Parkway
Colorado Springs, CO 80915

Proposed Signs by #	Elevation	Area	Sign Copy
A		100.88 sq ft	Monument – Illuminated - \$23,000.00
B	South	63.5 sq ft	CIRCLE K – Illuminated – \$2,279.00
C	South	23 sq ft	Polar Pop – Illuminated – Wall Sign - \$1,081.00
D1	East	20.8 sq ft	Circle K Logo – Illuminated- Wall Sign - \$1,081.00
D2	West	20.8 sq ft	Circle K Logo – Illuminated – Wall Sign \$1,081.00
E1	West	30.32 sq ft	Circle K Logo – Illuminated – Canopy
E2	South	30.32 sq ft	Circle K Logo – Illuminated – Canopy
E3	East	30.32 sq ft	Circle K Logo – Illuminated – Canopy – Total Valuation for Canopy Signs \$24,000.00
Total number of signs		Total area of signs	

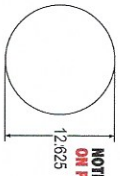
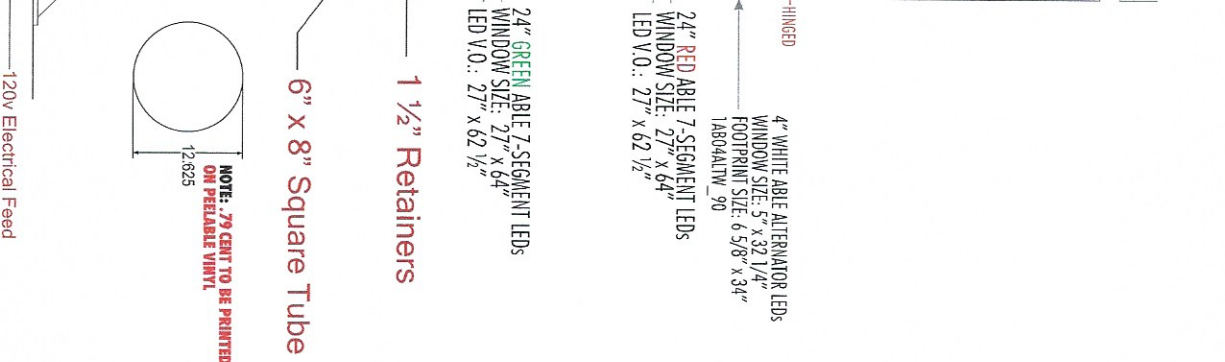
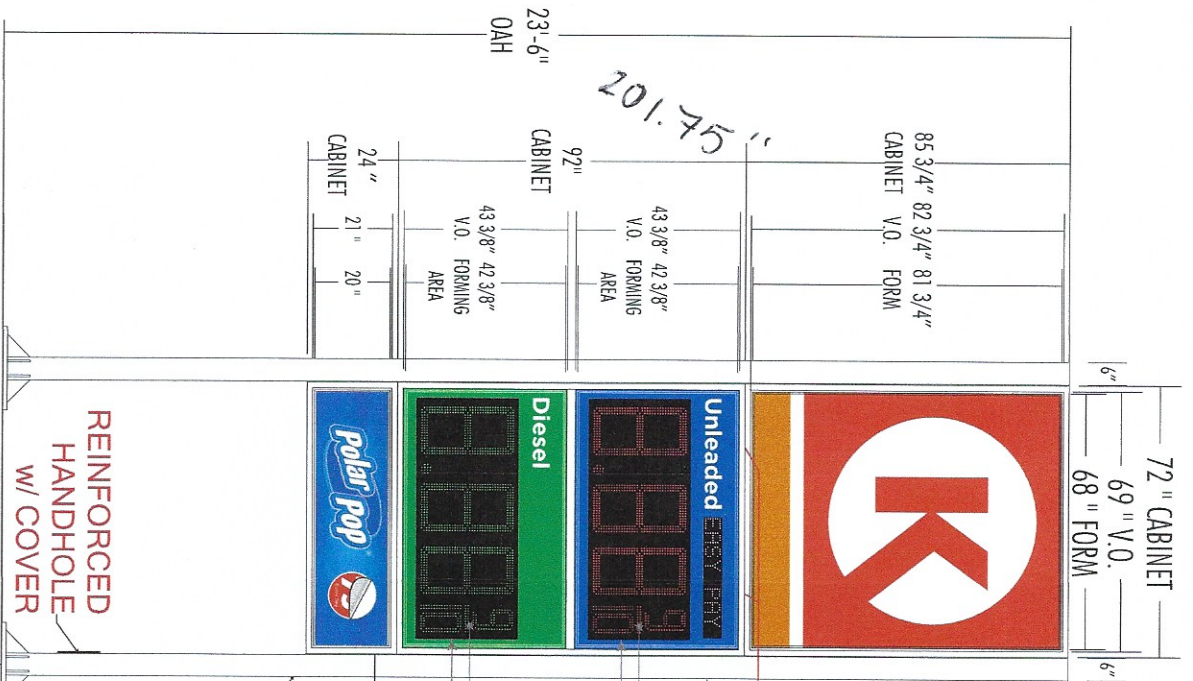
603 Meadowbrook Pkwy.
illum. monument

613 Meadowbrook Pkwy.
Store

609 Meadowbrook Pkwy.
gas canopy

A

MAIN I.D. SIGN



NOTE: .79 CENT TO BE PRINTED SEPARATELY ON PREFERABLE VINYL

201.75"

100.9 SA FT.

REVISION

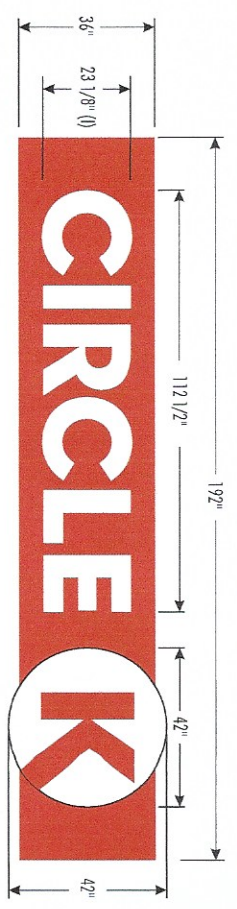
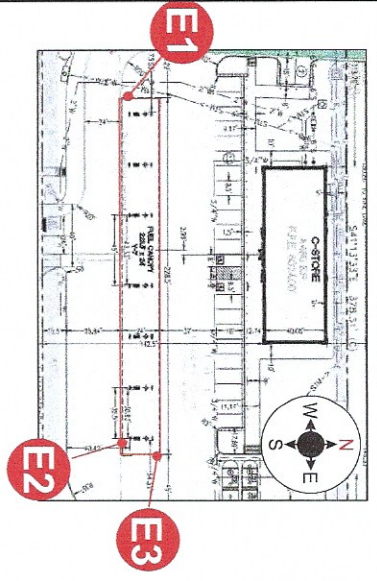
SIDE VIEW

SCALE = 1:32

REVISION

E

OVERHEAD VIEW



REFERENCE PART #:
VINYL APPLIED SECOND
SURFACE DECORATION

CIRCLE = 18.07 SQ. FT.
K = 12.25 SQ. FT.
TOTAL = 30.32 SQ. FT.
(x3) = 90.96 SQ. FT.

BUILDING SIDE

NON-ILLUMINATED ACM

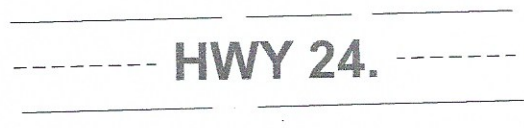


NON-ILLUMINATED ACM

NON-ILLUMINATED ACM

NON-ILLUMINATED ACM

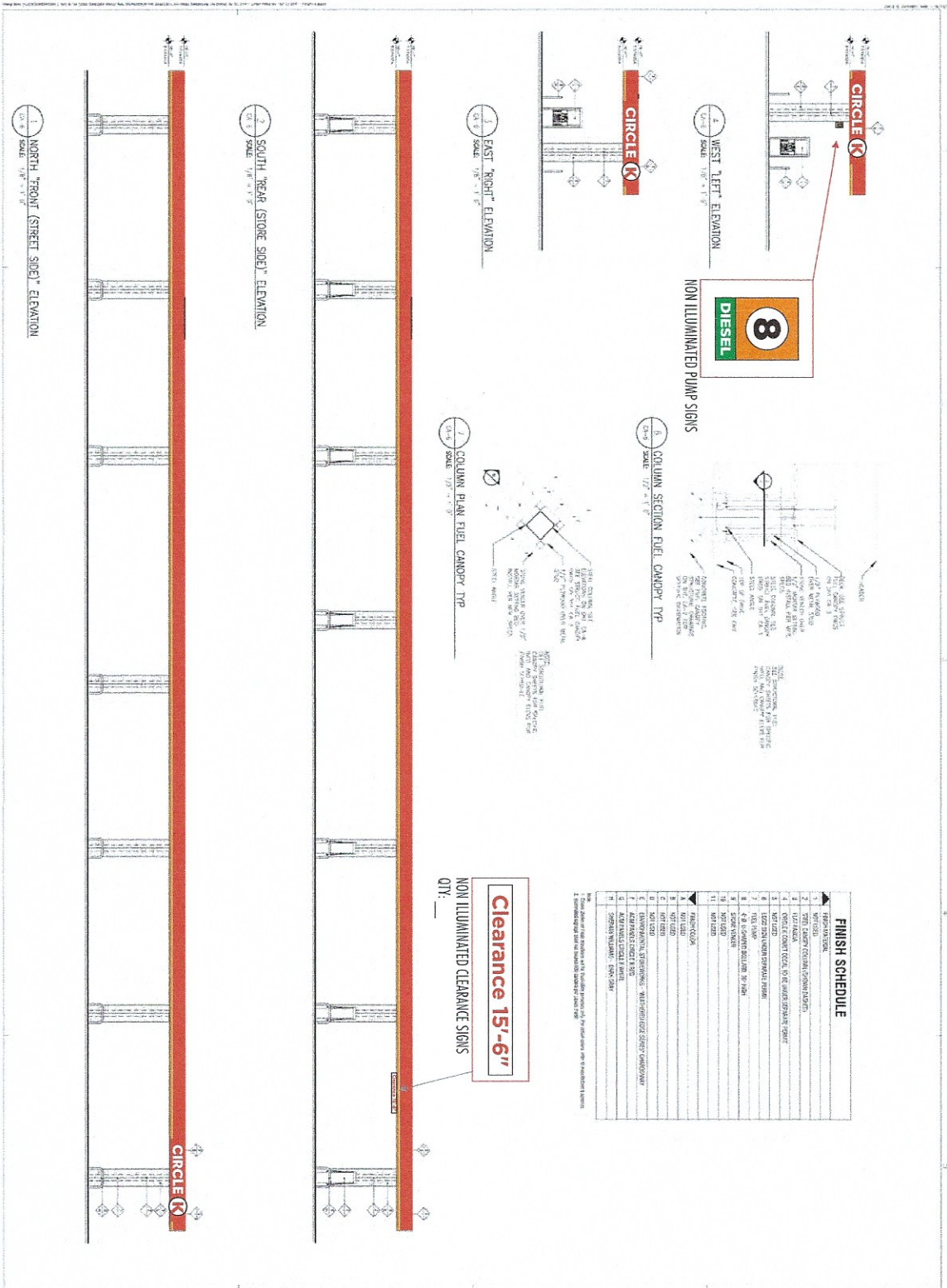
MEADOWBROOK PARK WAY.



CANOPY

SCALE = 1:120

REV 15 10/15



FINISH SCHEDULE

NO.	DESCRIPTION
1	SPRINKLER RISER
2	SPRINKLER HEAD
3	SPRINKLER CONTROL VALVE
4	SPRINKLER CONTROL VALVE
5	SPRINKLER CONTROL VALVE
6	SPRINKLER CONTROL VALVE
7	SPRINKLER CONTROL VALVE
8	SPRINKLER CONTROL VALVE
9	SPRINKLER CONTROL VALVE
10	SPRINKLER CONTROL VALVE
11	SPRINKLER CONTROL VALVE
12	SPRINKLER CONTROL VALVE
13	SPRINKLER CONTROL VALVE
14	SPRINKLER CONTROL VALVE
15	SPRINKLER CONTROL VALVE
16	SPRINKLER CONTROL VALVE
17	SPRINKLER CONTROL VALVE
18	SPRINKLER CONTROL VALVE
19	SPRINKLER CONTROL VALVE
20	SPRINKLER CONTROL VALVE
21	SPRINKLER CONTROL VALVE
22	SPRINKLER CONTROL VALVE
23	SPRINKLER CONTROL VALVE
24	SPRINKLER CONTROL VALVE
25	SPRINKLER CONTROL VALVE
26	SPRINKLER CONTROL VALVE
27	SPRINKLER CONTROL VALVE
28	SPRINKLER CONTROL VALVE
29	SPRINKLER CONTROL VALVE
30	SPRINKLER CONTROL VALVE
31	SPRINKLER CONTROL VALVE
32	SPRINKLER CONTROL VALVE
33	SPRINKLER CONTROL VALVE
34	SPRINKLER CONTROL VALVE
35	SPRINKLER CONTROL VALVE
36	SPRINKLER CONTROL VALVE
37	SPRINKLER CONTROL VALVE
38	SPRINKLER CONTROL VALVE
39	SPRINKLER CONTROL VALVE
40	SPRINKLER CONTROL VALVE
41	SPRINKLER CONTROL VALVE
42	SPRINKLER CONTROL VALVE
43	SPRINKLER CONTROL VALVE
44	SPRINKLER CONTROL VALVE
45	SPRINKLER CONTROL VALVE
46	SPRINKLER CONTROL VALVE
47	SPRINKLER CONTROL VALVE
48	SPRINKLER CONTROL VALVE
49	SPRINKLER CONTROL VALVE
50	SPRINKLER CONTROL VALVE

CANOPY

Preemerge
3141 S. 10th St., Suite 100
Tucson, AZ 85710
Tel: 520-795-1111
Fax: 520-795-1112
www.preemerge.com

PROFESSIONAL SEAL

PROJECT NAME:
CIRCLE K STORES, INC.
EL PASO COUNTY
COLORADO
MEADOWBROOK HWY &
US HIGHWAY 24

PROJECT NUMBER:
CA-6

PROJECT ARCHITECT:
CIRCLE K STORES, INC.
2000 N. 10th St.
Tucson, AZ 85710

SHEET TITLE:
FUEL CANOPY ELEVATIONS