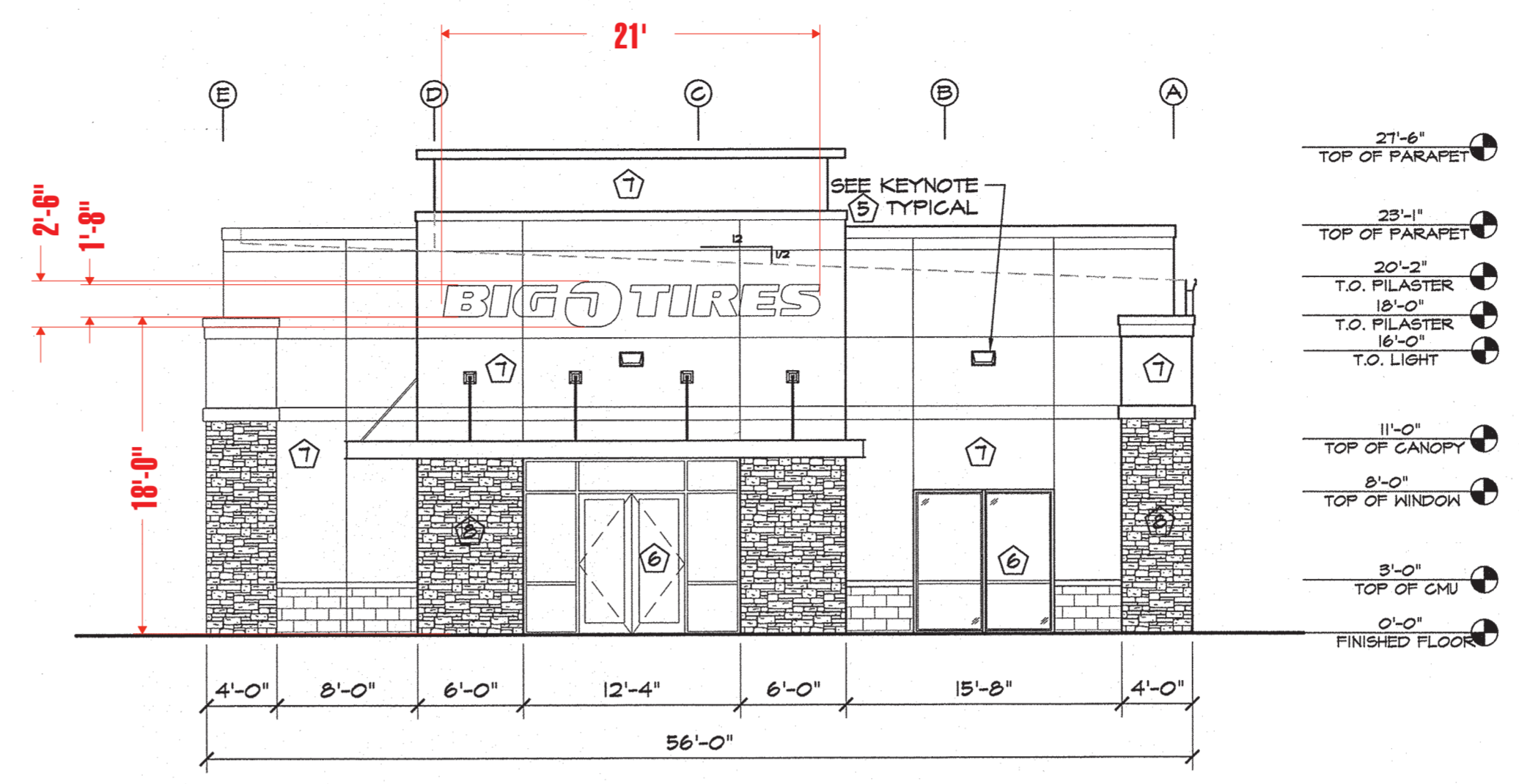
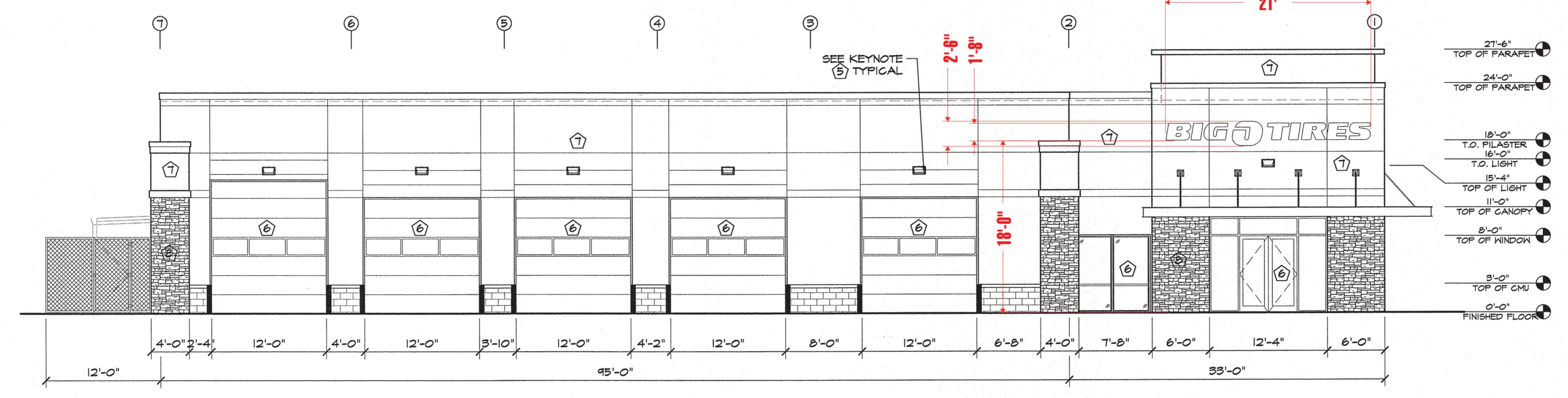


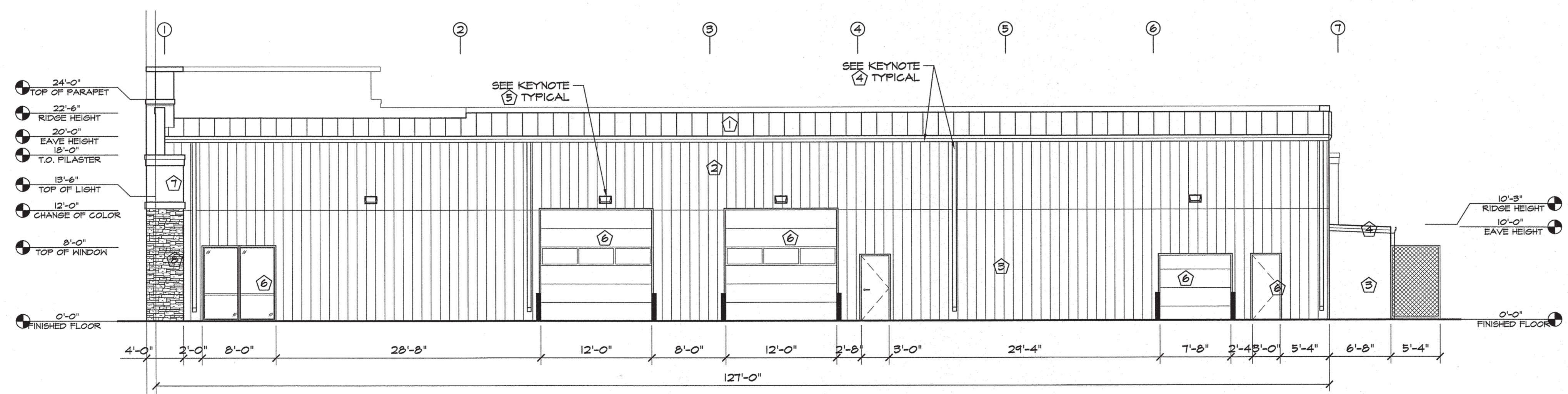
2 NORTH ELEVATION  
SCALE: 1/8"=1'-0"



1 SOUTH ELEVATION  
SCALE: 1/8"=1'-0"



3 WEST ELEVATION  
SCALE: 1/8"=1'-0"



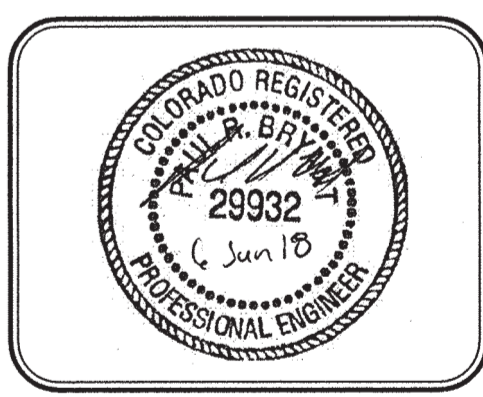
4 EAST ELEVATION  
SCALE: 1/8"=1'-0"

ELEVATION KEY NOTES	
1	PREFINISHED 24 GA. "PBR" METAL ROOF PANELS BY METAL BUILDING PROVIDER, COLOR - CHARCOAL GRAY
2	PREFINISHED 26 GA. "PBR" METAL WALL PANELS BY METAL BUILDING PROVIDER COLOR - CHARCOAL GRAY, 200 SERIES
3	PREFINISHED 26 GA. "PBR" METAL WALL PANELS BY METAL BUILDING PROVIDER COLOR - ASH GRAY, 200 SERIES
4	PREFINISHED GUTTER & DOWNSPOUTS BY METAL BUILDING PROVIDER-CHARCOAL GRAY, VERIFY LOCATIONS AND ADD SIDEWALK CHASE AS NEEDED, DTL. 1/2 WALL PACK LIGHT - SEE ELEVATION FOR HEIGHTS.
5	SEE SCHEDULES ON A4.1 FOR ALL DOOR & WINDOW INFORMATION
6	3/4" STUCCO FINISH SYS., EXPANSION JOINT - 120 SF MAX AREA - EL REY-113 DOVE GRAY
7	STONE VENEER, LEDGE STONE-BALA LEDGE

**HAMMERS CONSTRUCTION INC.**  
 COMMERCIAL GENERAL CONTRACTORS SPECIALIZING IN DESIGN/BUILD  
 PRESIDENT: STEVE R. HAMMERS  
 VICE PRES: DAVID J. HAMMERS  
 1411 WOOLSEY HEIGHTS  
 COLORADO SPRINGS, CO 80915  
 (719) 570-1599 FAX (719) 570-7008  
 www.hammersconstruction.com

THIS DRAWING CONTAINS MATERIAL & INFORMATION WHICH MAY NOT BE REPRODUCED WITHOUT WRITTEN CONSENT OF HAMMERS CONSTRUCTION, INC. THESE DRAWINGS ARE INTENDED TO BE USED ONLY BY HAMMERS CONSTRUCTION & ITS REPRESENTATIVES. THESE DRAWINGS HAVE NOT BEEN PREPARED FOR ANY OTHER PURPOSE THAN TO INDICATE THE GENERAL FEATURES AND PLACEMENT OF THE PROPOSED PROJECT. COPYRIGHT © 2018 HAMMERS CONSTRUCTION

**BIG O TIRES**  
 6495 N. MERIDIAN RD  
 PUYTON, CO 80831  
 EL PASO COUNTY, COLORADO



DATE: MAR. 20, 2018  
 DRAWN BY: D. AQUINO  
 PROJ. MGR: Z. CRABTREE  
 SCALE: SEE PLAN  
 APPROVED BY:  
 JOB NO: 1053

Released for Permit  
 NOV 19 2018  
 LB  
 RBD Construction

RESUBMITTALS:
▲
▲
▲
▲
▲

RBD ✓

**A2.1**  
 BUILDING ELEVATIONS