

Windmill Mesa Park

Widefield Parks & Recreation

Widefield School District 3

4610 Fencer Rd., Colorado Springs, CO 80911

Site Plan

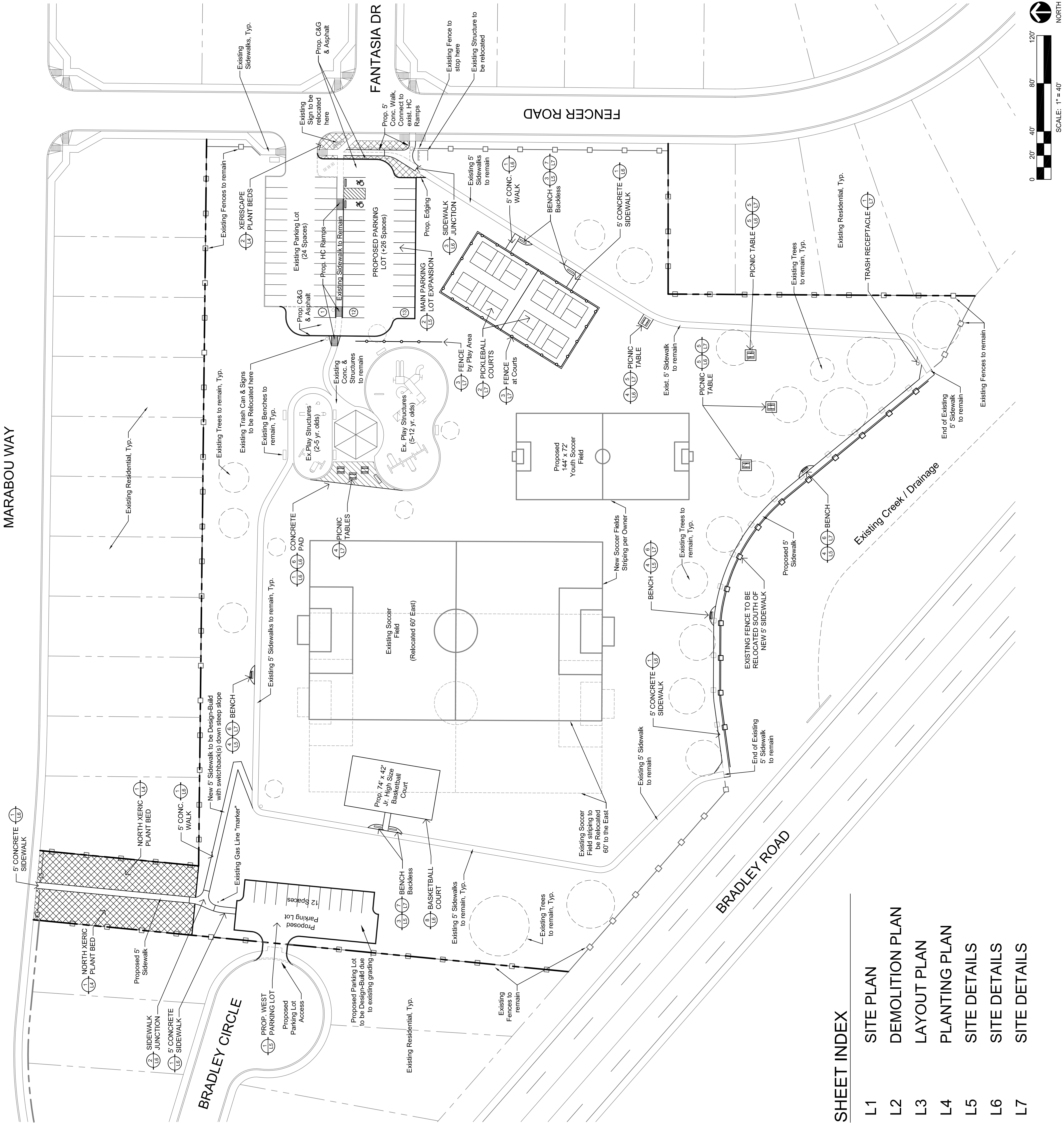
DATE:	SCALE:
Feb. 22, 2017	PER PLAN

REVISION:	DATE:	ISSUE:
#1	03/25/2017	For Construction

SHEET

L1

1 OF 7



SHEET INDEX

- L1 SITE PLAN
- L2 DEMOLITION PLAN
- L3 LAYOUT PLAN
- L4 PLANTING PLAN
- L5 SITE DETAILS
- L6 SITE DETAILS
- L7 SITE DETAILS

Windmill Mesa Park

Widefield Parks & Recreation

Widefield School District 3

4610 Fencer Rd. Colorado Springs, CO 80911

Layout

Plan

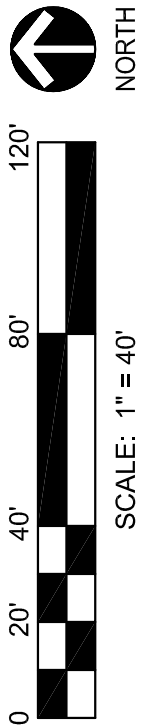
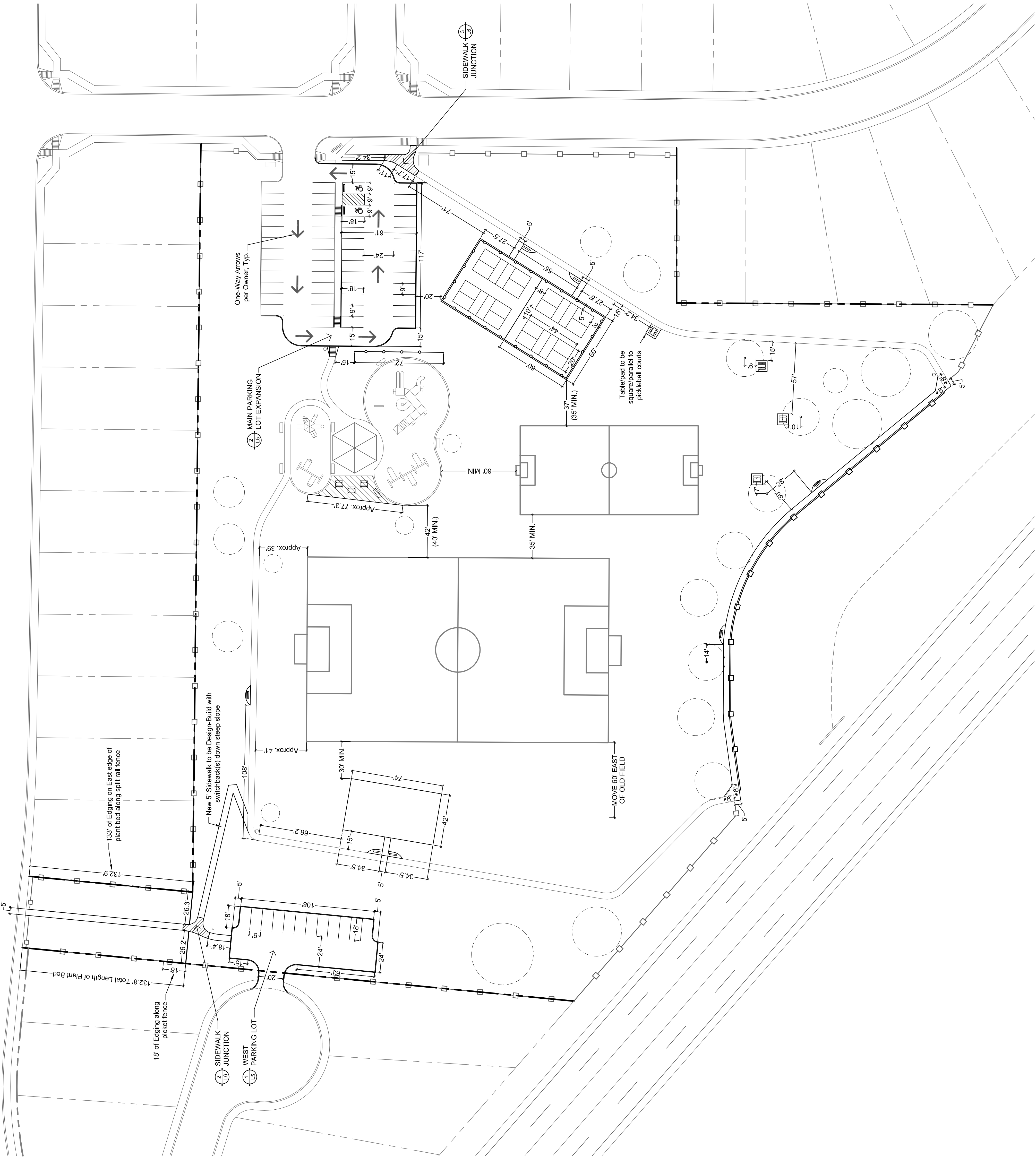
DATE:	SCALE:
Feb. 22, 2017	PER PLAN

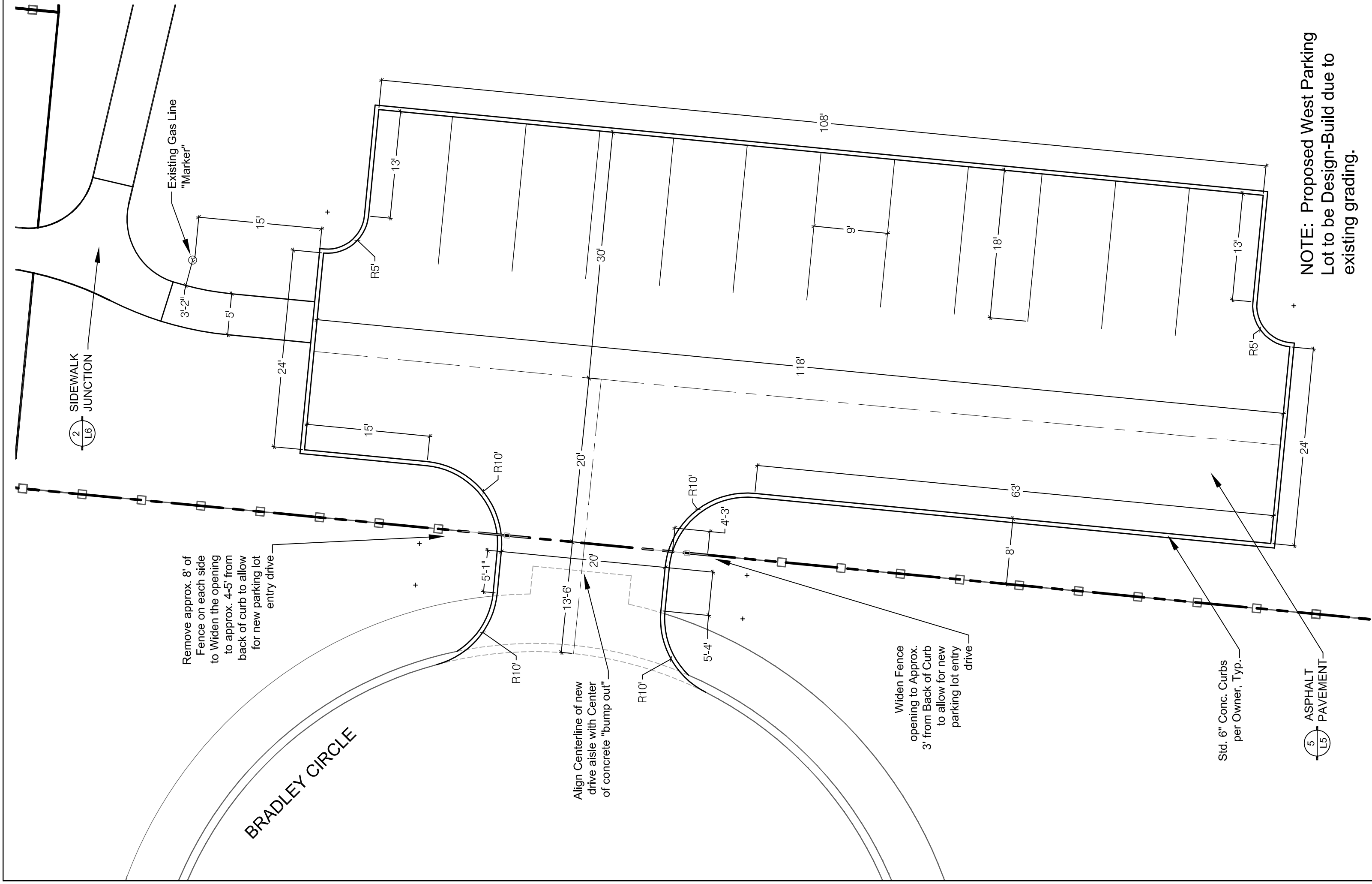
REVISION:	DATE:	ISSUE:
#1	03/25/2017	For Construction

SHEET

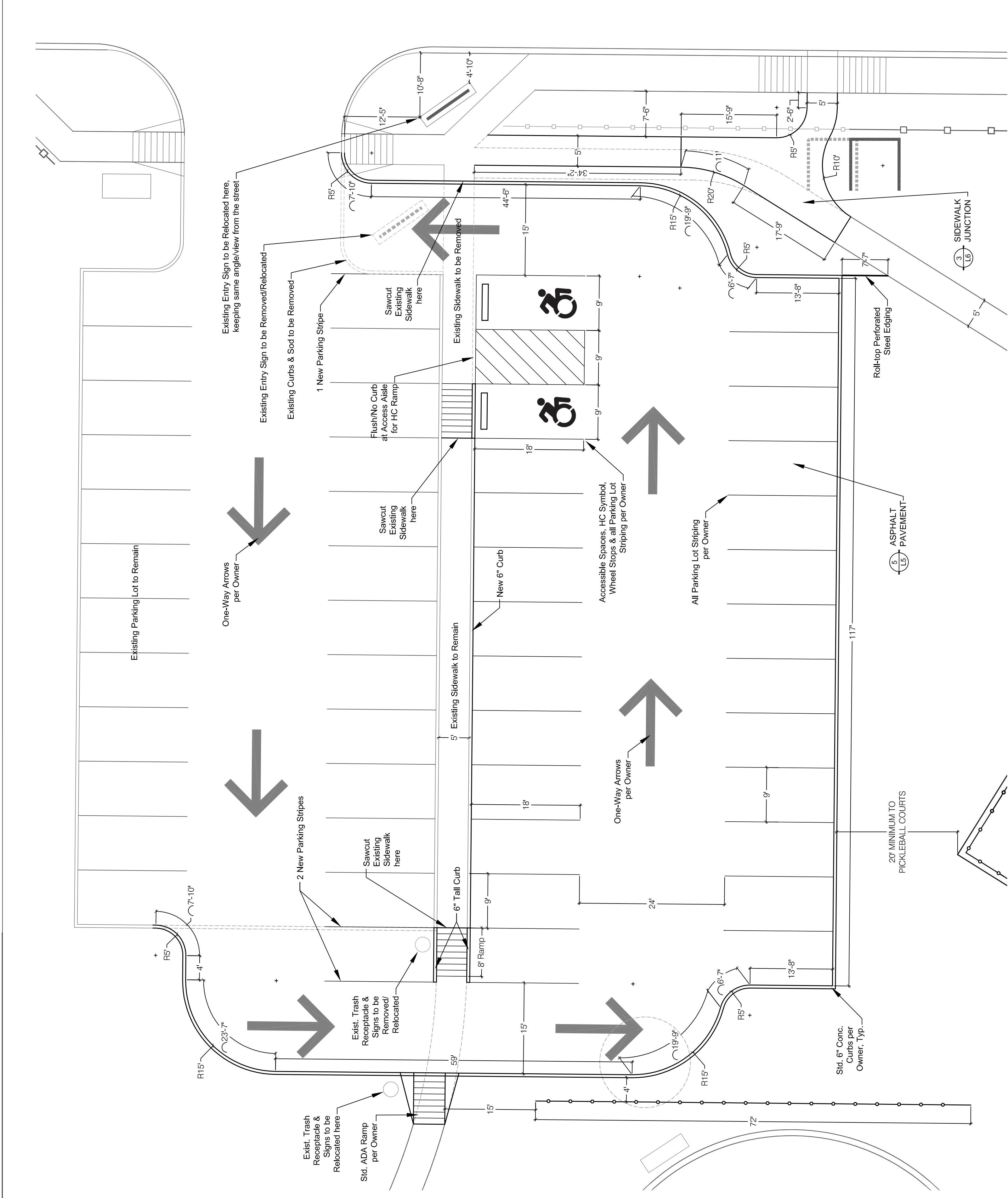
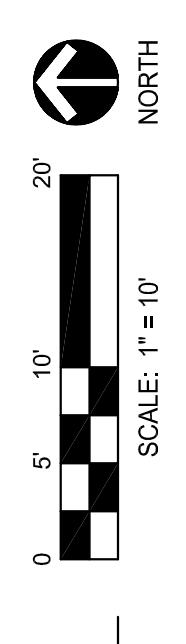
L3

3 OF 7

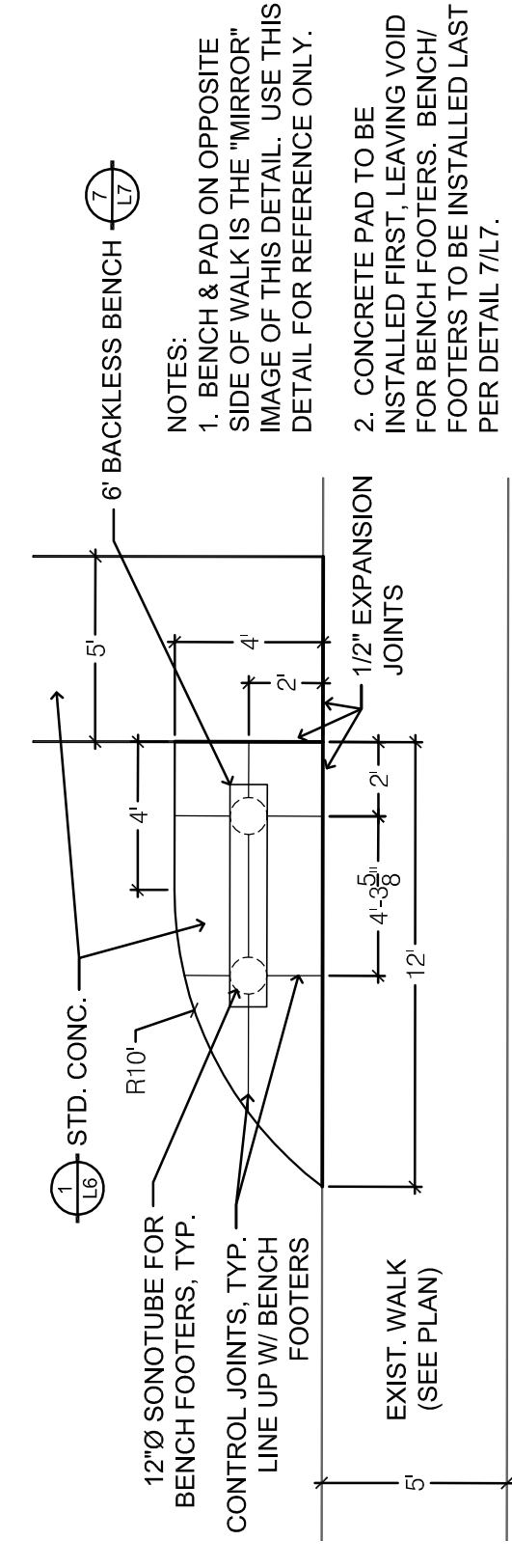
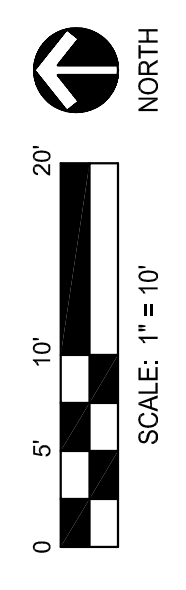




1 West Parking Lot - Layout Plan

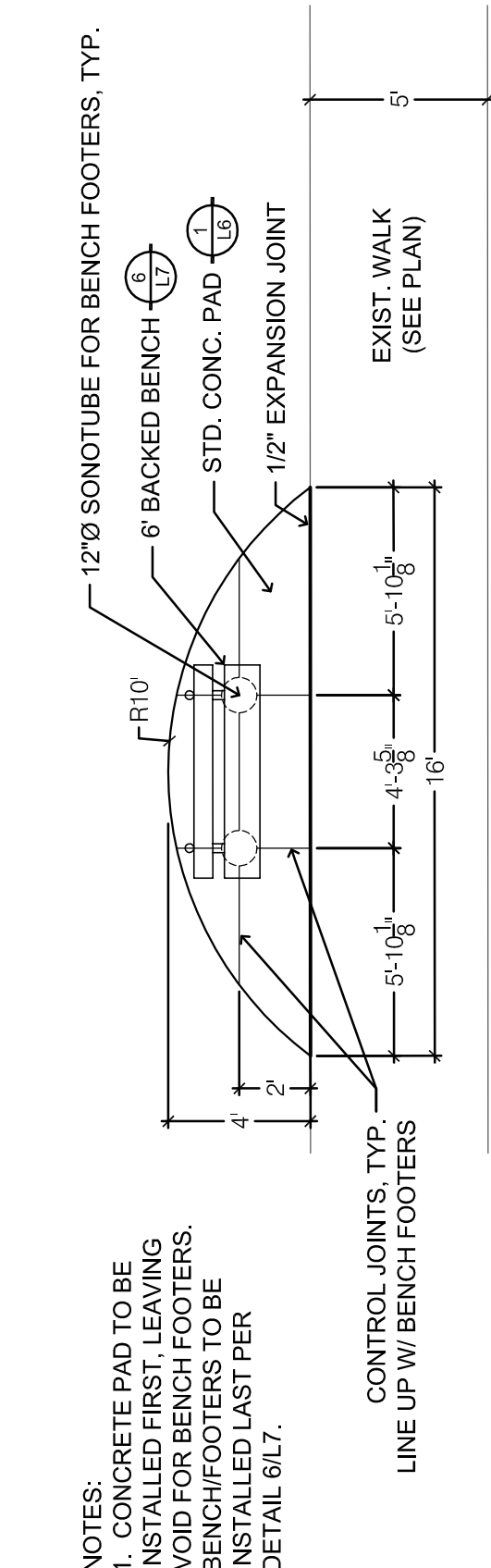


2 Main Parking Lot Expansion - Layout Plan



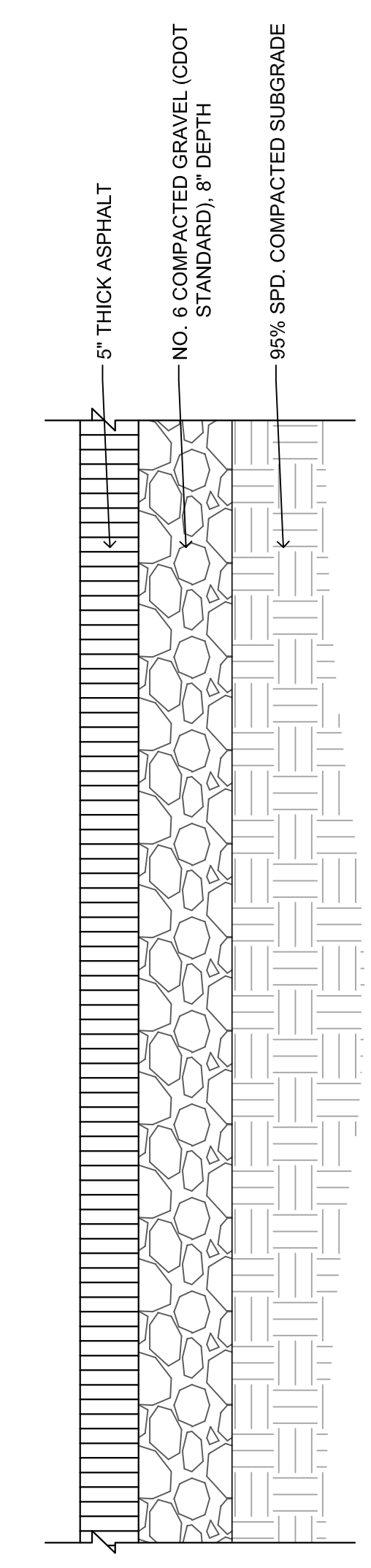
3 Concrete Pad - Layout Plan (Backless Bench)

Scale: 1" = 5'



4 Concrete Pad - Layout Plan (Backed Bench)

Scale: 1" = 5'



5 Asphalt Pavement Section in Parking Lots

No Scale

Terry Putman & Associates, Inc.
Land Planning and Development Consulting
Park Planning and Design

TPA

7495 Delmonico Drive
Colorado Springs, Colorado 80919
phone: 719.641.1539 fax: 719.590.1566
e-mail: tputman@tpa.com

Designed By:

ALPINE DESIGN
Landscape Architecture
by **Janette Kuhnel, PLA**
2730 Silent Rain Drive
Colorado Springs, CO 80919
AlpineDesignLA@gmail.com
Phone: (719) 290-5330

Windmill Mesa Park
Widefield Parks & Recreation
Widefield School District 3
4610 Fencer Rd. Colorado Springs, CO 80911

Site Details

DATE:	SCALE:
Feb. 22, 2017	PER PLAN

REVISION:	DATE:	ISSUE:
#1	03/25/2017	For Construction

SHEET

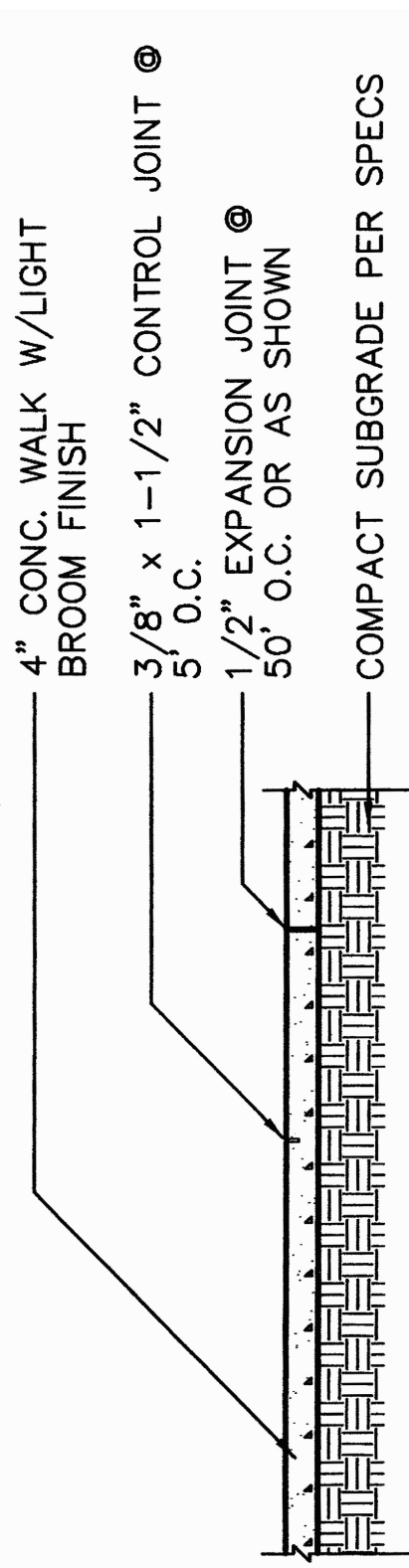
L5

5 OF 7

CONCRETE:
4,000 PSI @ 28 DAYS.
3/4" COURSE AGGREGATE.
1" SLUMP (W/O SUPER-PLASTICIZER).
4.5% MIN AIR CONTENT.

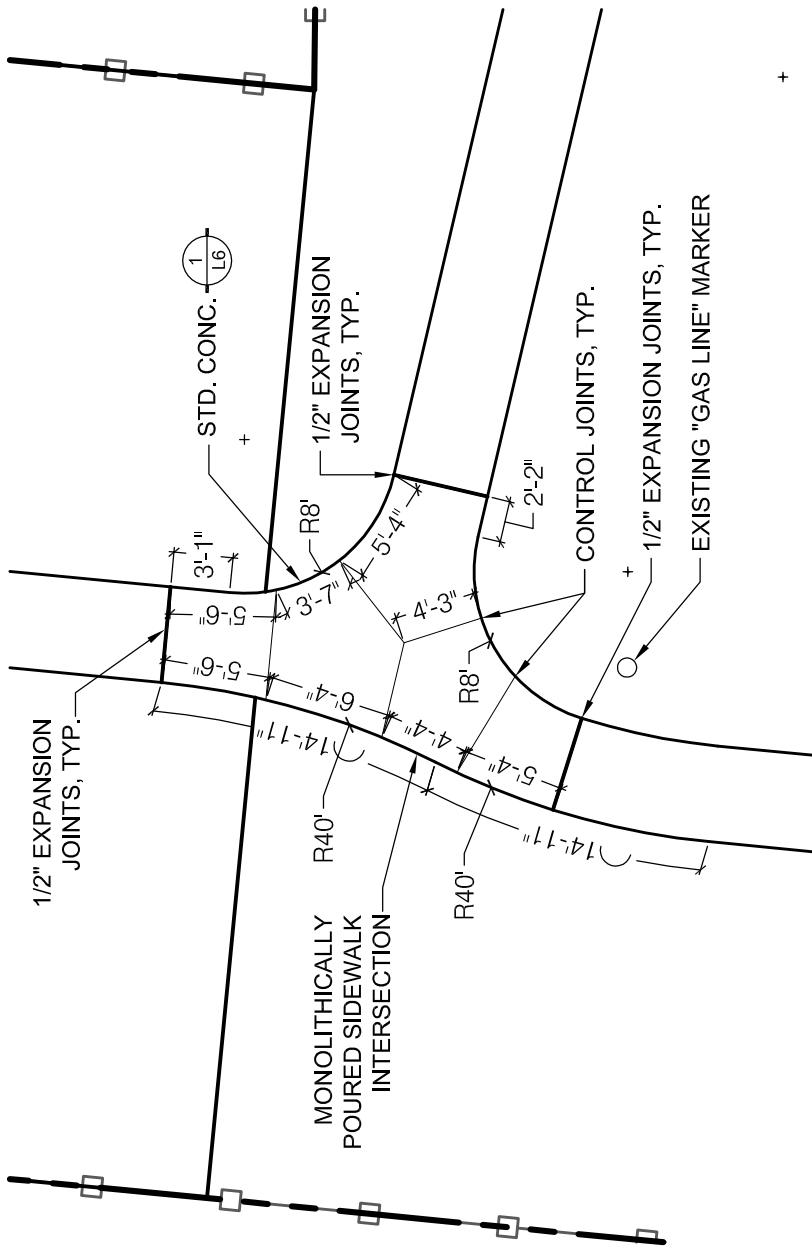
FOR ALL EXPANSION JOINTS:
1/2" WIDE, FULL DEPTH OF CONCRETE.
1/2" DEEP POURED URETHANE SEALANT OVER
REFORMER (W/O SUPER-PLASTICIZER).
SEALANT COLOR TO MATCH STANDARD
CONCRETE.

*USE FIBER MESH REINFORCED CONCRETE THROUGHOUT.
MEDIUM BROOM FINISH (UNLESS OTHERWISE NOTED).
STANDARD CONCRETE COLOR.



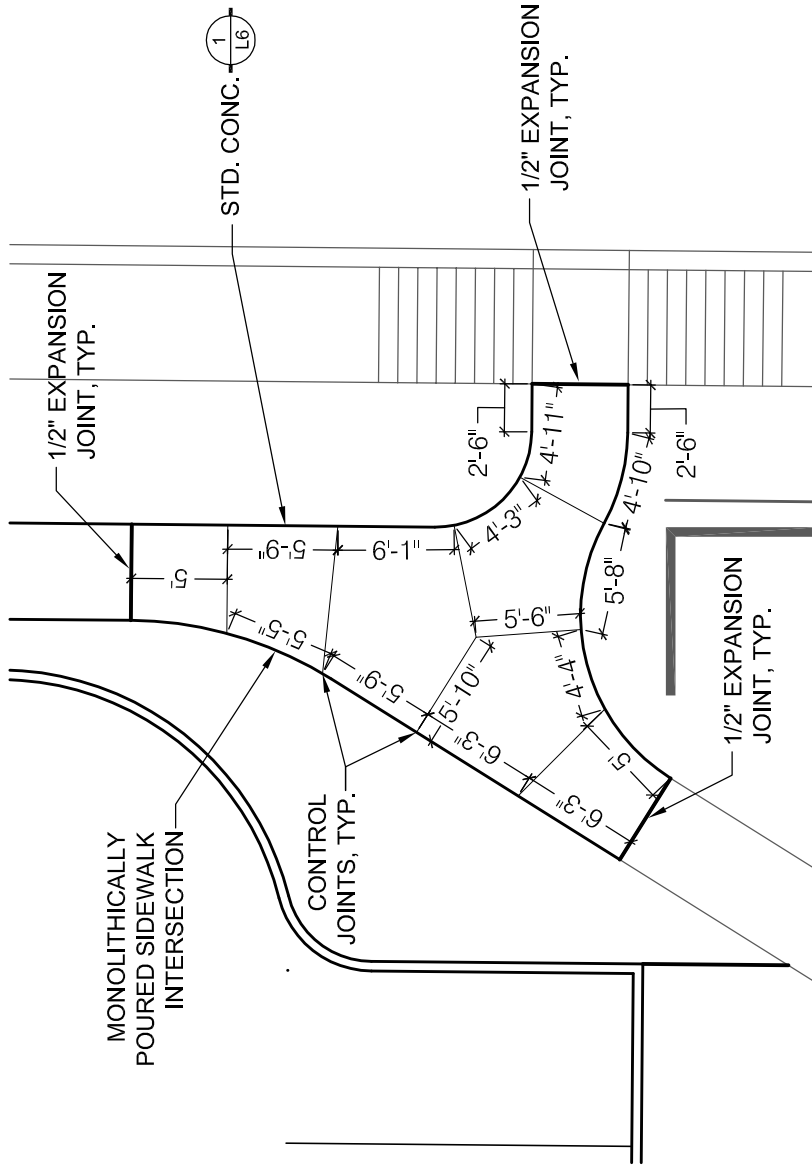
1 Standard Concrete Walk / Pad

Scale: 1/2" = 1'-0"



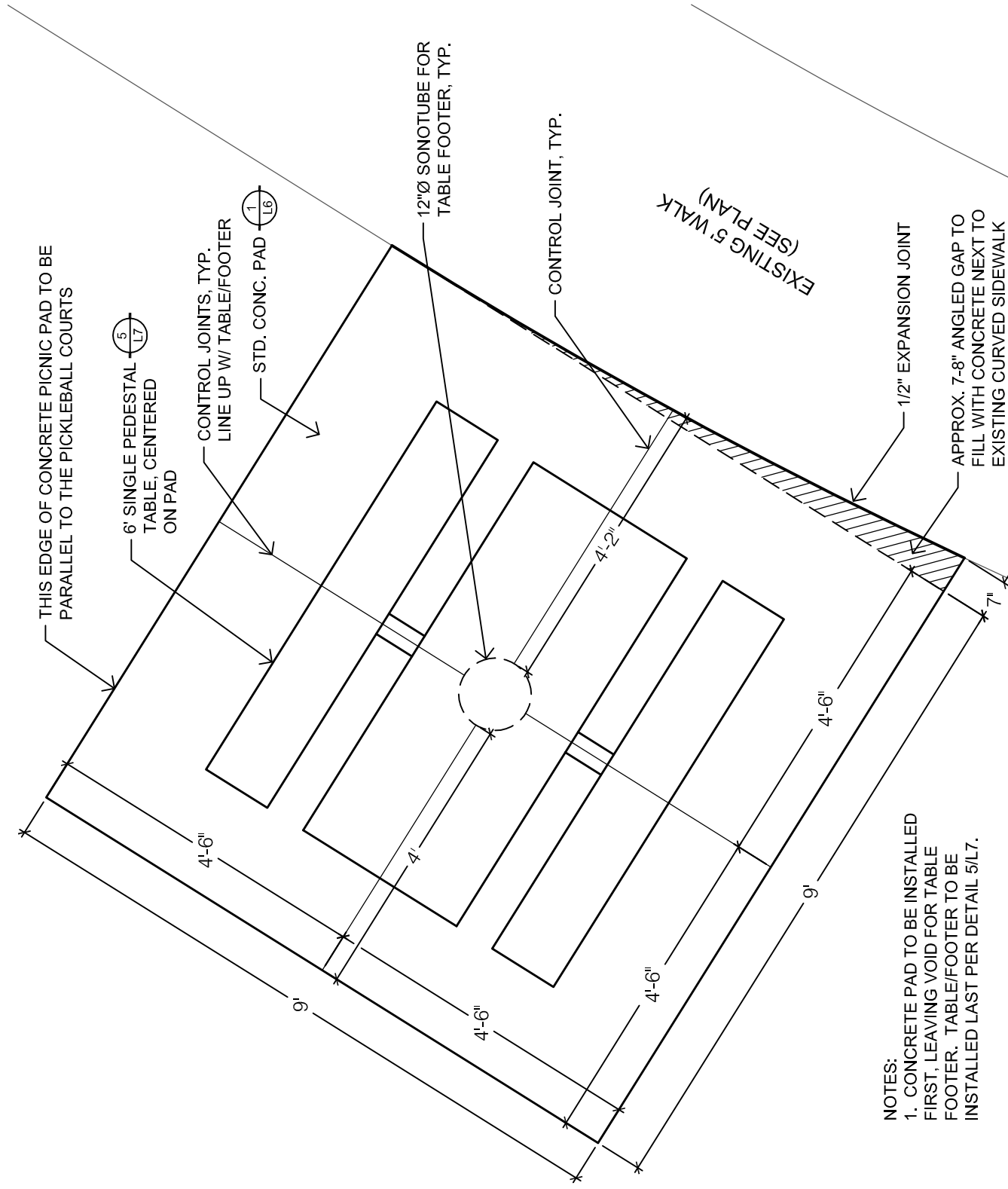
2 Monolithic Concrete Sidewalk Junction
(West side)

Scale: 1" = 10'



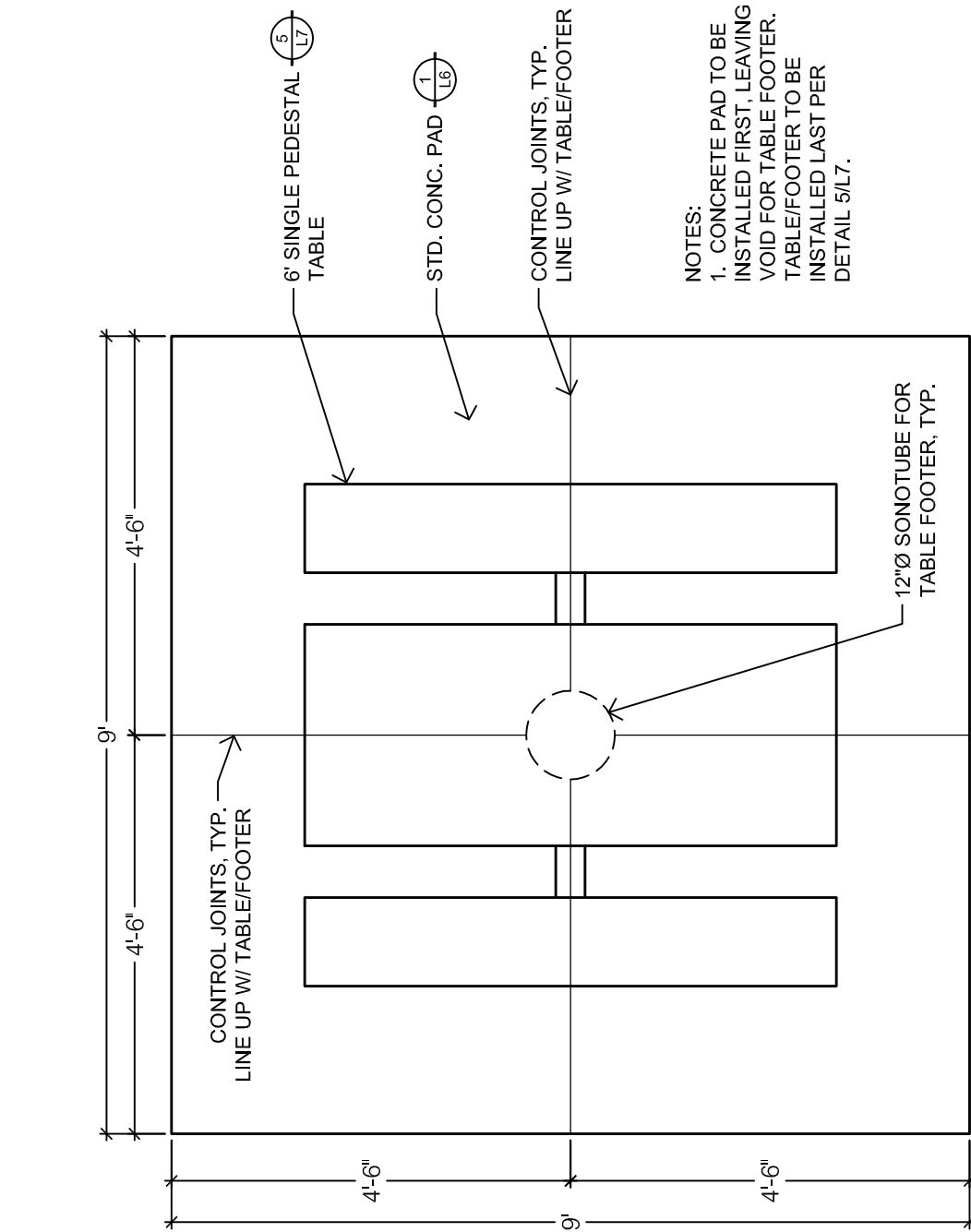
3 Monolithic Concrete Sidewalk Junction
(East side by Main Entry)

Scale: 1" = 10'



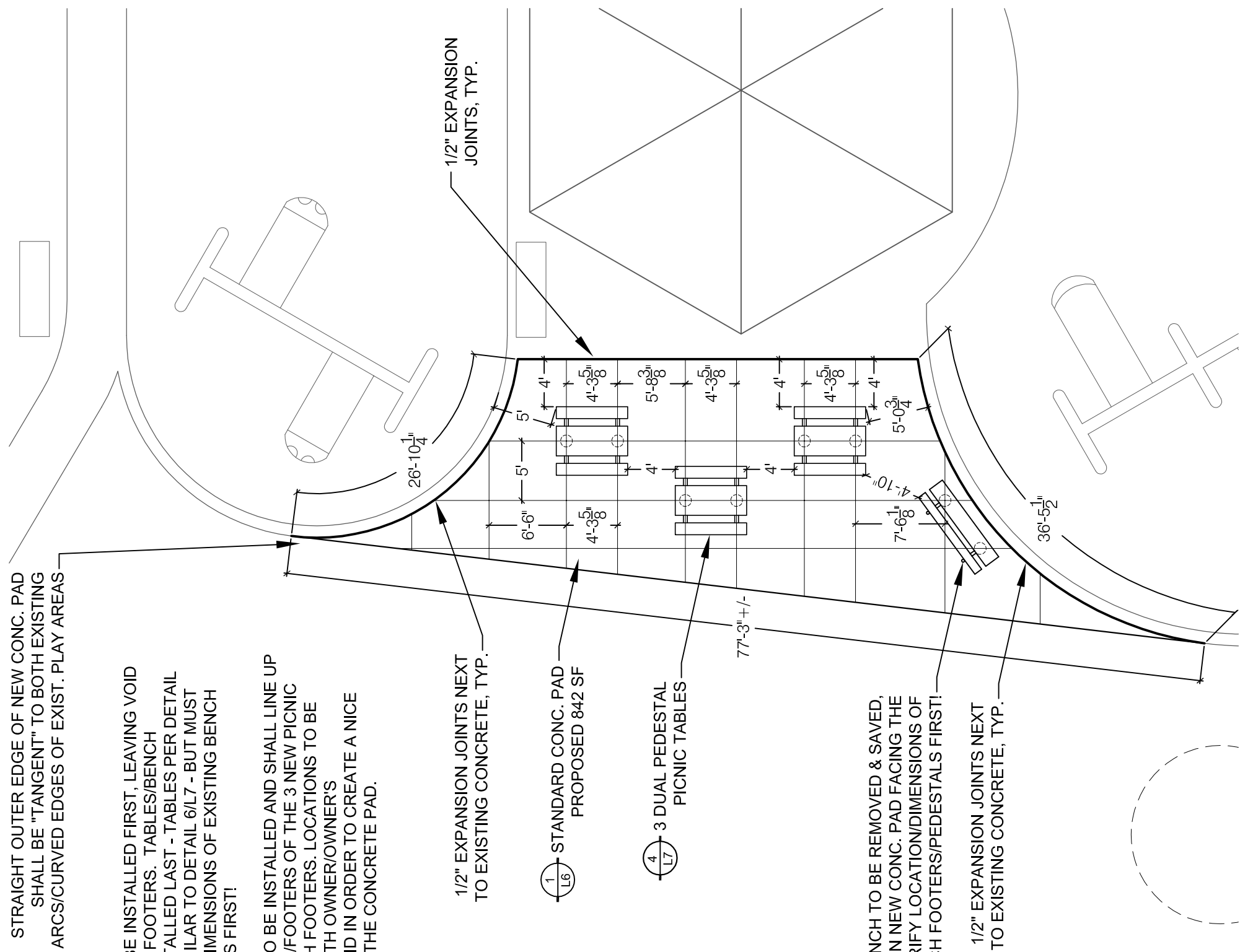
4 Concrete Pad at Exist. Walk / Picnic Table (In-ground Mount)

Scale: 1/2" = 1'



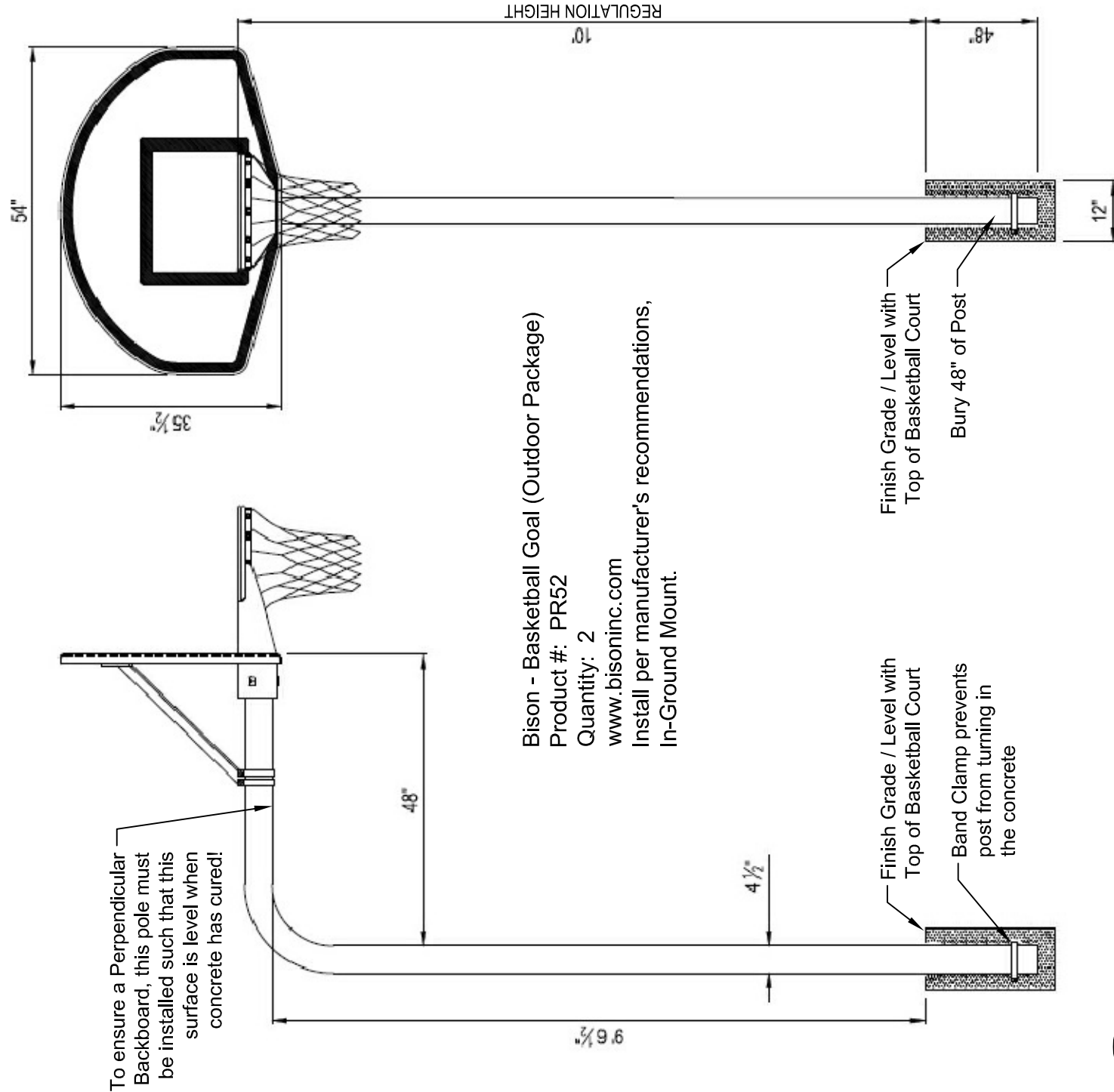
5 Concrete Pad & Picnic Table (In-ground Mount)

Scale: 1/2" = 1'



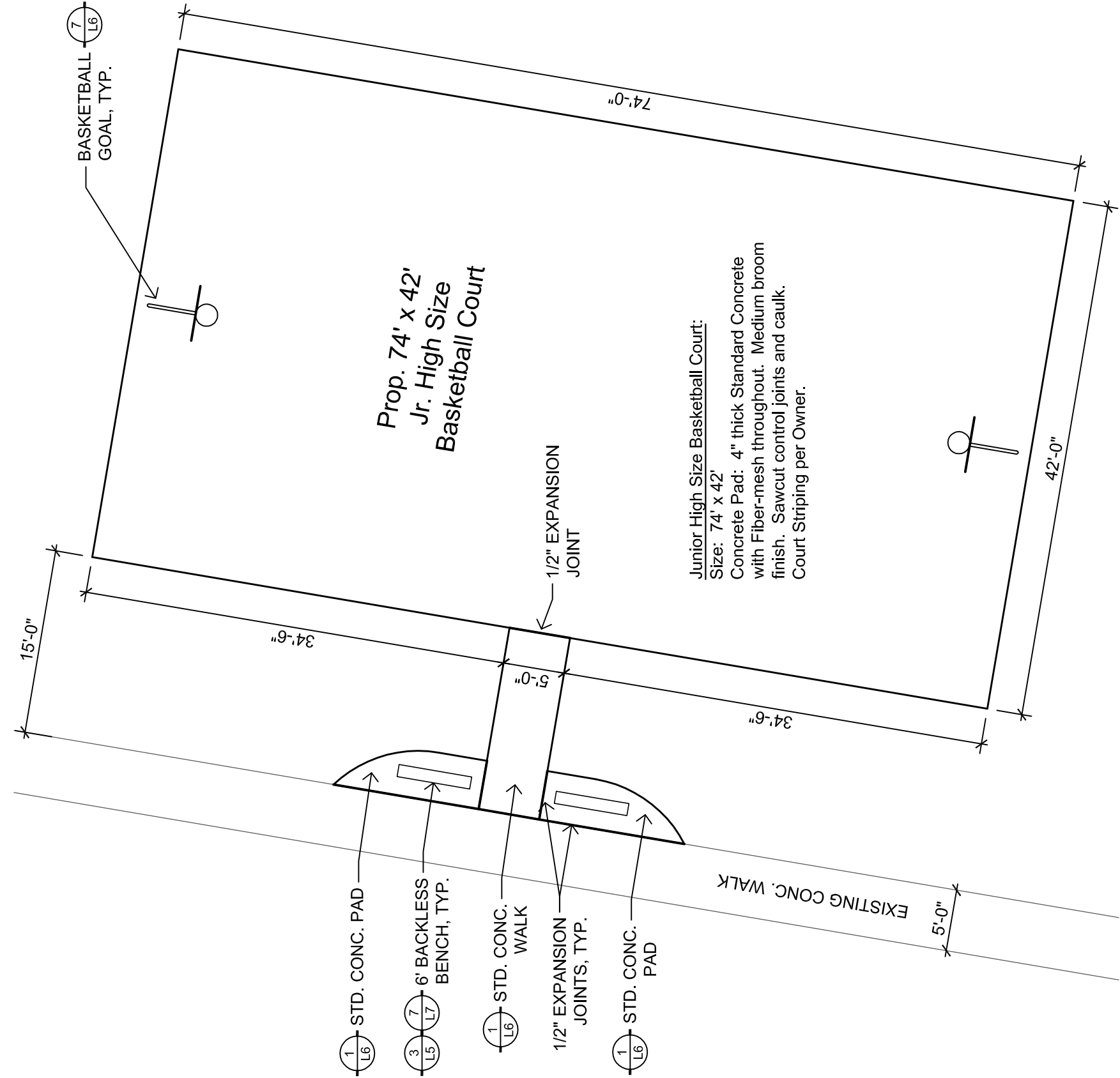
6 Concrete Pad by Existing Pavilion

Scale: 1" = 10'



7 Basketball Goal (In-ground Mount)

No Scale



8 Basketball Court Layout

Scale: 1" = 10'

DATE:	SCALE:
Feb. 22, 2017	PER PLAN

REVISION:	DATE:	ISSUE:
#1	03/25/2017	For Construction

Windmill Mesa Park

Widefield Parks & Recreation

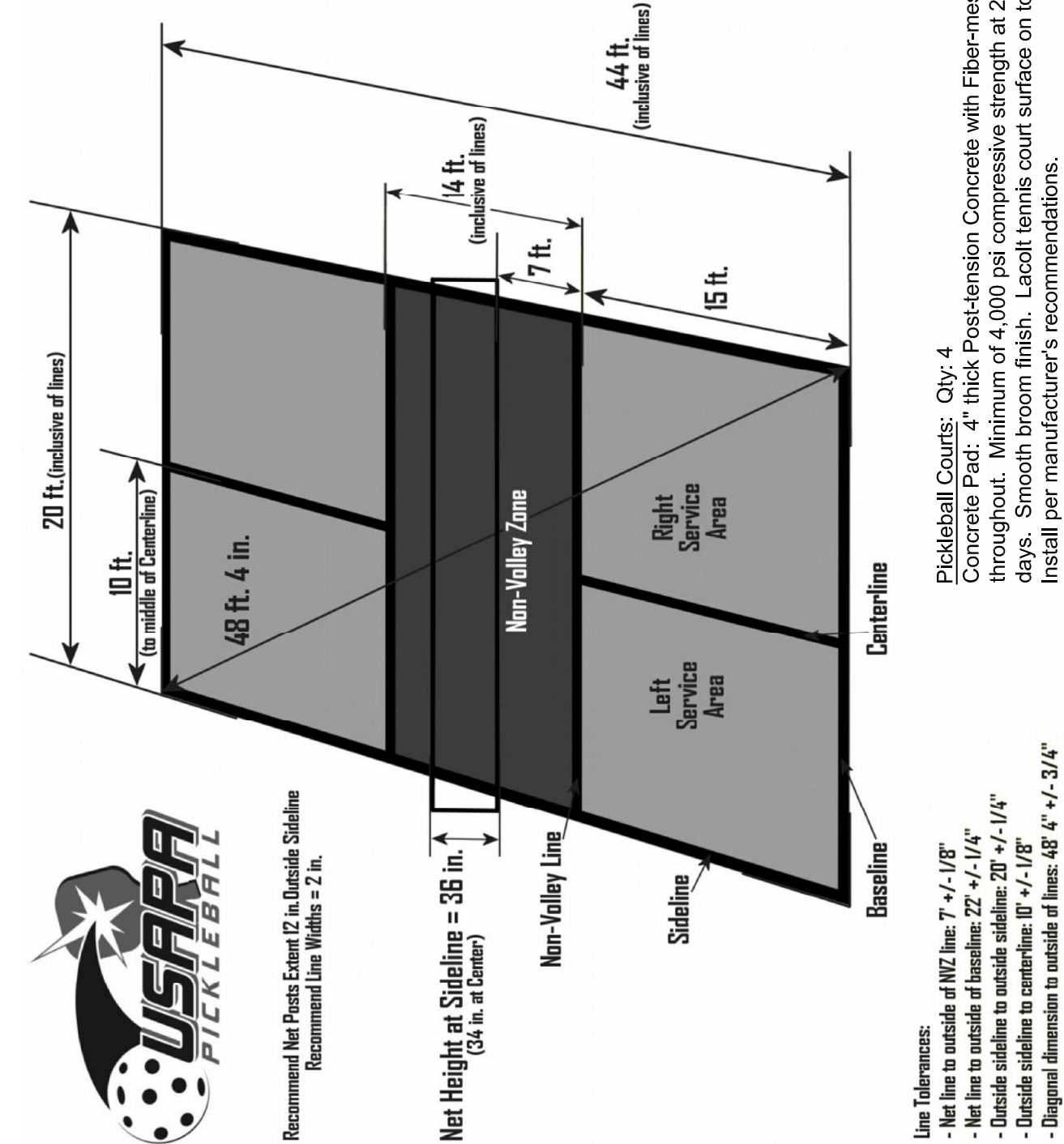
Widefield School District 3

4610 Fencer Rd., Colorado Springs, CO 80911

Site Details

DATE:	SCALE:
Feb. 22, 2017	PER PLAN

REVISION:	DATE:	ISSUE:
#1	03/25/2017	For Construction



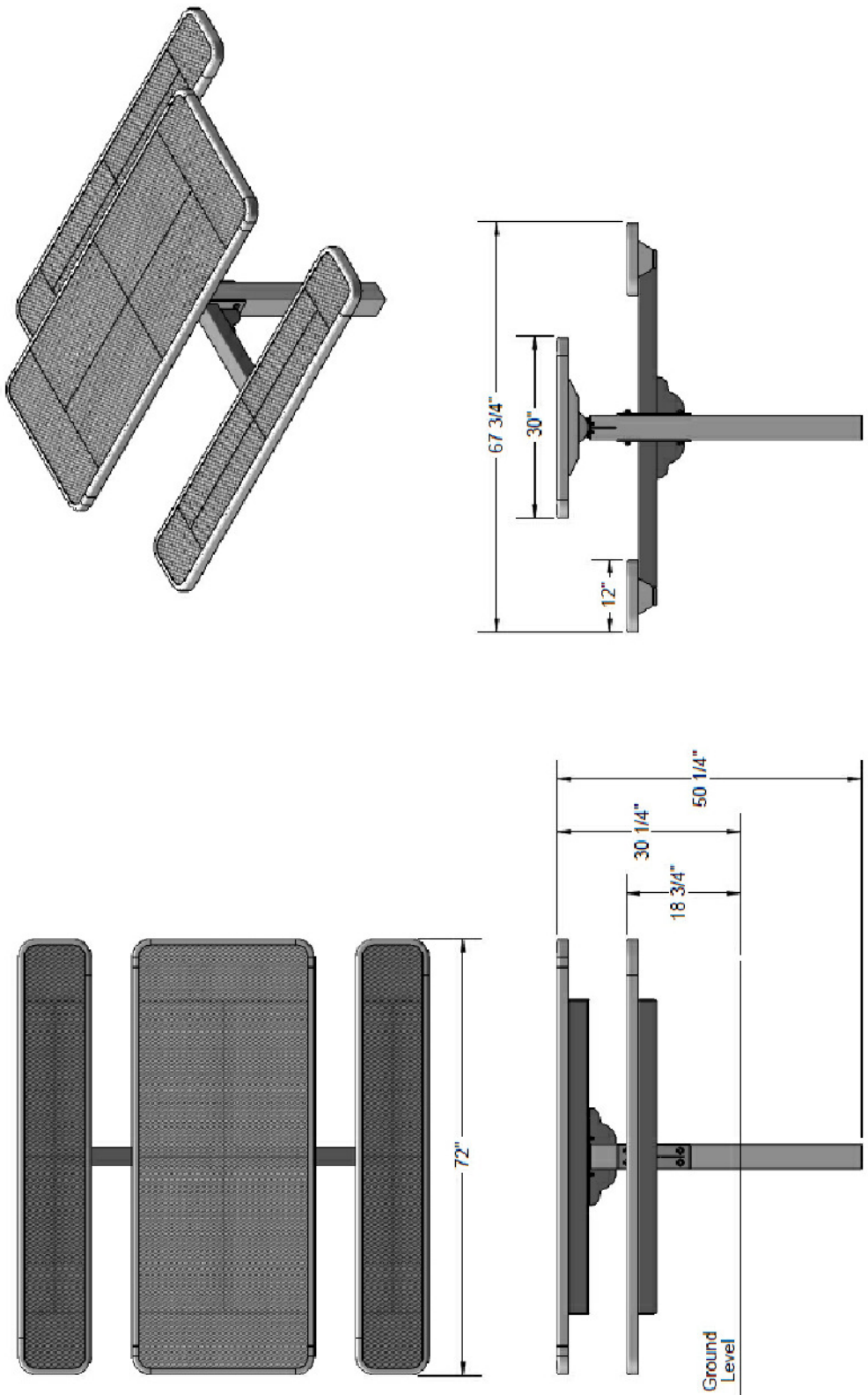
- Line Tolerances:**
- Net line to outside of NW line: 7' +/- 1/8"
 - Net line to outside of baseline: 22' +/- 1/4"
 - Outside sideline to outside sideline: 20' +/- 1/4"
 - Outside sideline to centerline: 10' +/- 1/8"
 - Original dimension to outside of lines: 48' 4" +/- 3/4"
- Pickleball Courts:** Qty: 4
- Concrete Pad:** 4" thick Post-tension Concrete with Fiber-mesh throughout. Minimum of 4,000 psi compressive strength at 28 days. Smooth broom finish. Locust tennis court surface on top. Install per manufacturer's recommendations.

2

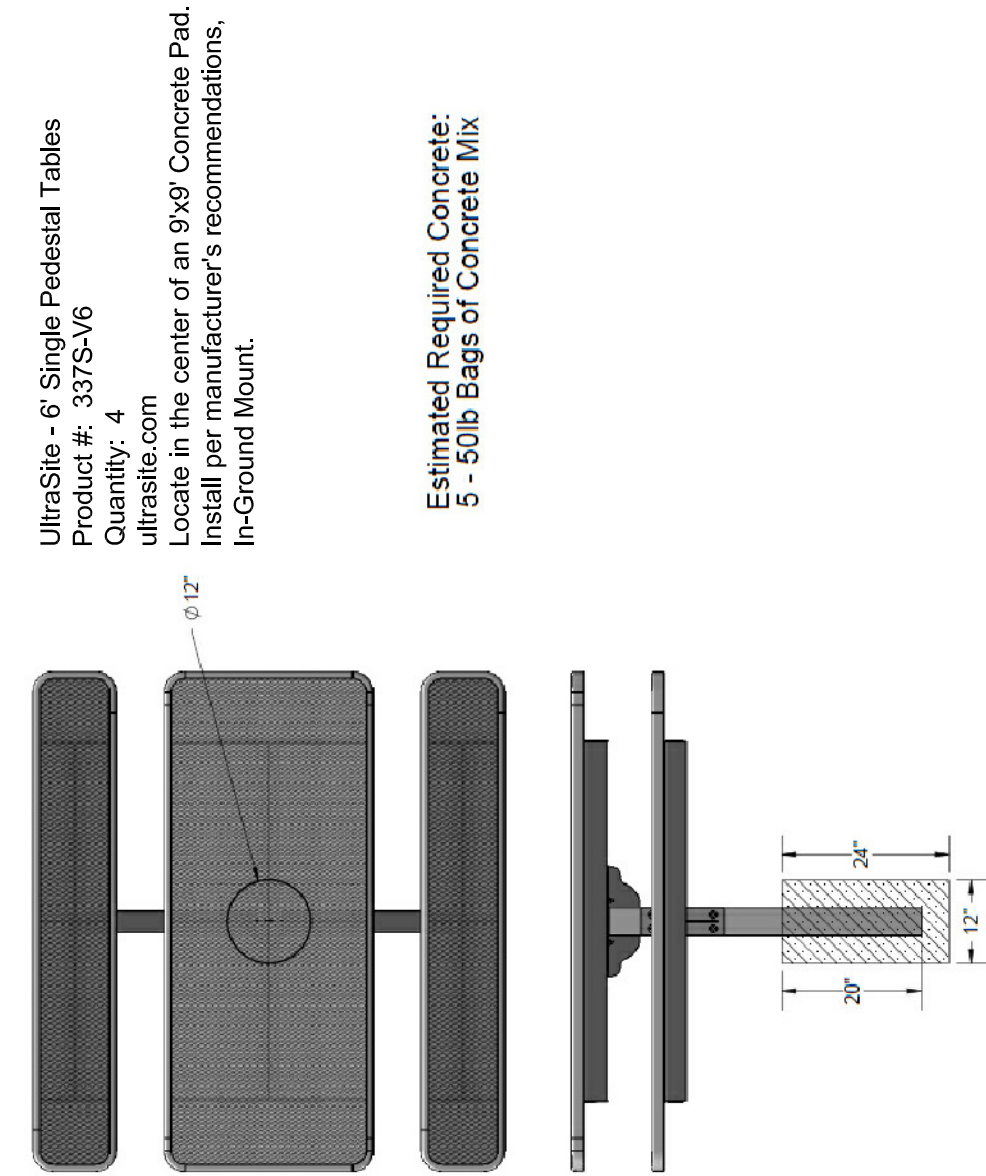
Pickleball Court Layout

No Scale

Overall Dimensions



Installation/Footers

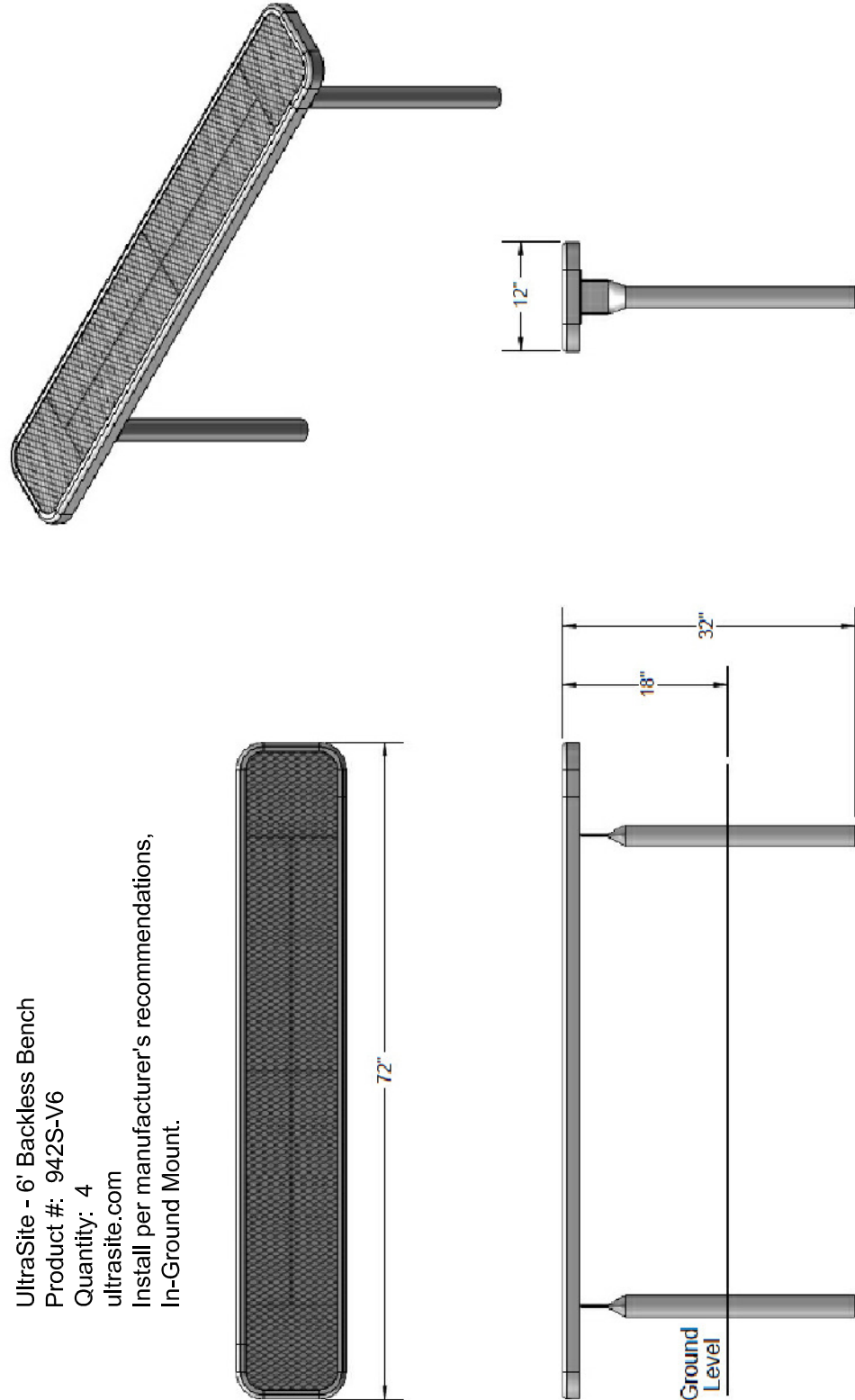


5

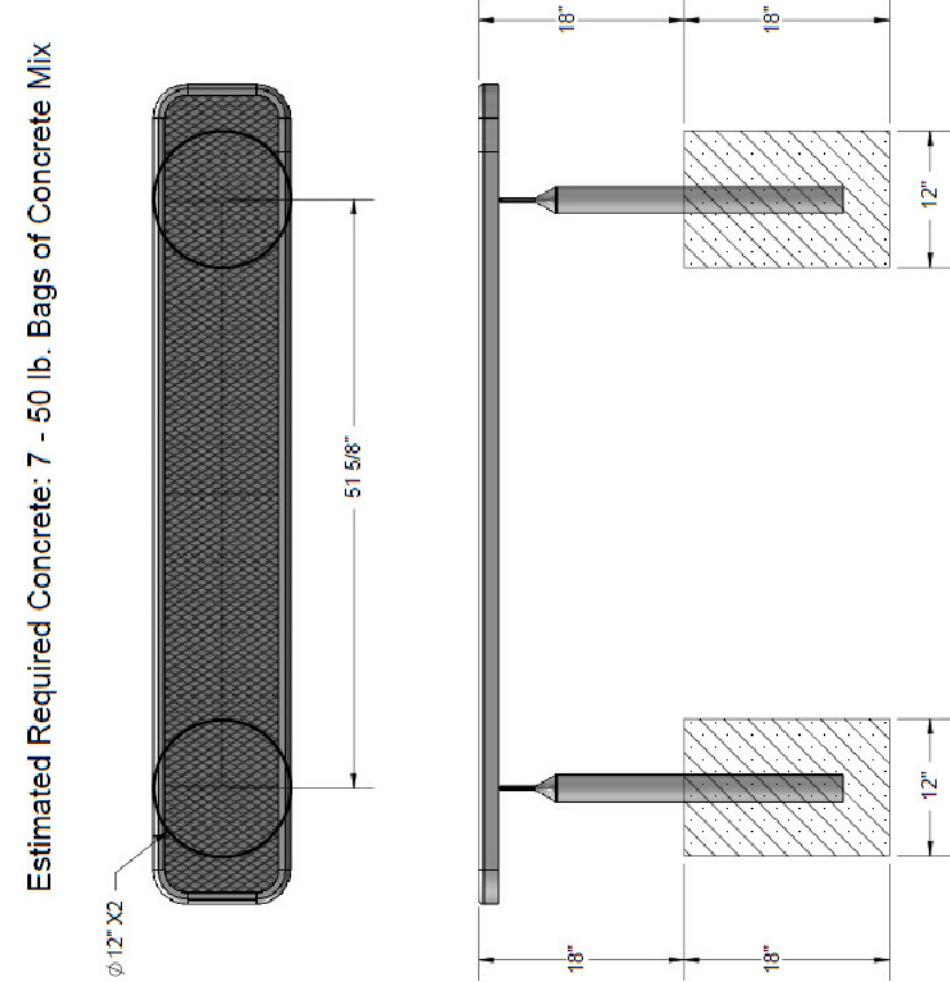
6' Single Pedestal Table (In-ground Mount)

No Scale

Overall Dimensions



Installation/Footers



7

6' Backless Bench (In-ground Mount)

No Scale

EX-32

32 GALLON TRASH RECEPTACLE

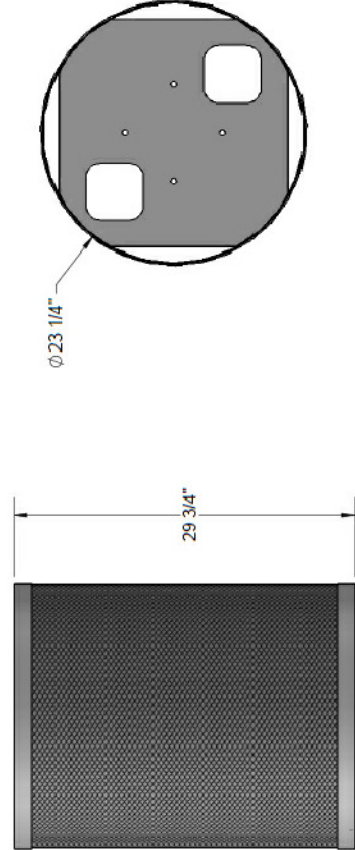
Receptacle Coating: Oven fused functionalized polyethylene copolymer-based thermoplastic. Fluidized bed coating application with superior mechanical performance, impact resistance and UV-stability.

Material: 3/4" #9 steel expanded metal. 11 gauge x 1-1/2" flat strip border the top and bottom of the expanded metal, and the vertical seam. Bottom plate fabricated from 11 gauge sheet steel laser cut for 4 precision fit. All electrolysis MIG welded.

Receptacle Dimensions: 23-1/4" diameter x 29-3/4" high x 32 gallon capacity

Hardware: Attachment hardware and mounting kit not included (7/16" diameter holes provided in receptacle for mounting).

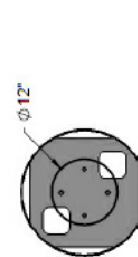
Overall Dimensions



Attach the IG KIT to the EX-32 as shown using specified hardware.



Estimated Required Concrete:
5 - 50lb Bags of Concrete Mix



IG KIT

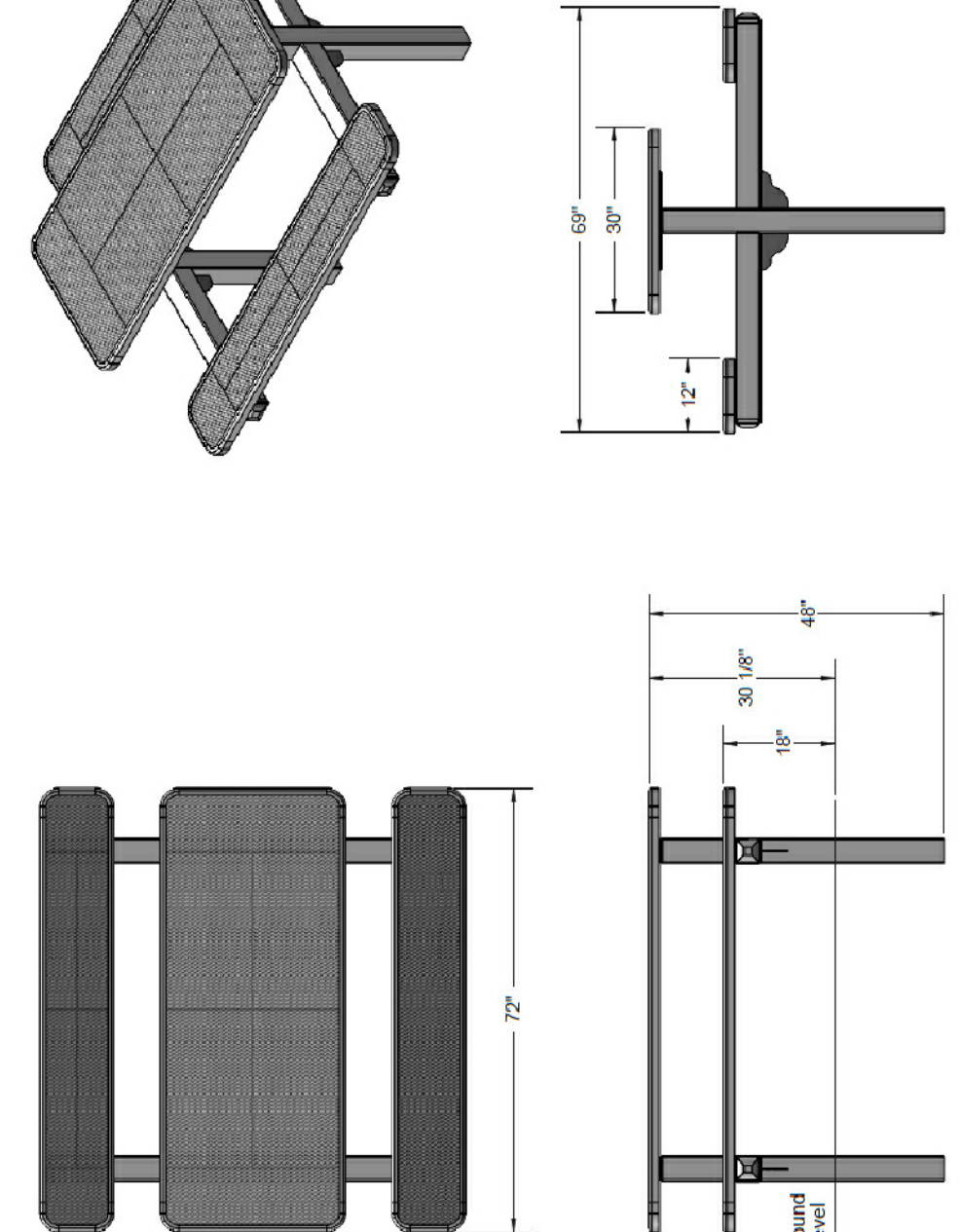
ITEM NO.	Part No.	DESCRIPTION	QTY
1	74105-0002	receptacle approval mount	1
3	33-52-0029	2 1/2" x 1 1/2" Mount Bolt (SS)	4
4	33-52-0012	5/8" x 3" Nut (SS)	4

1

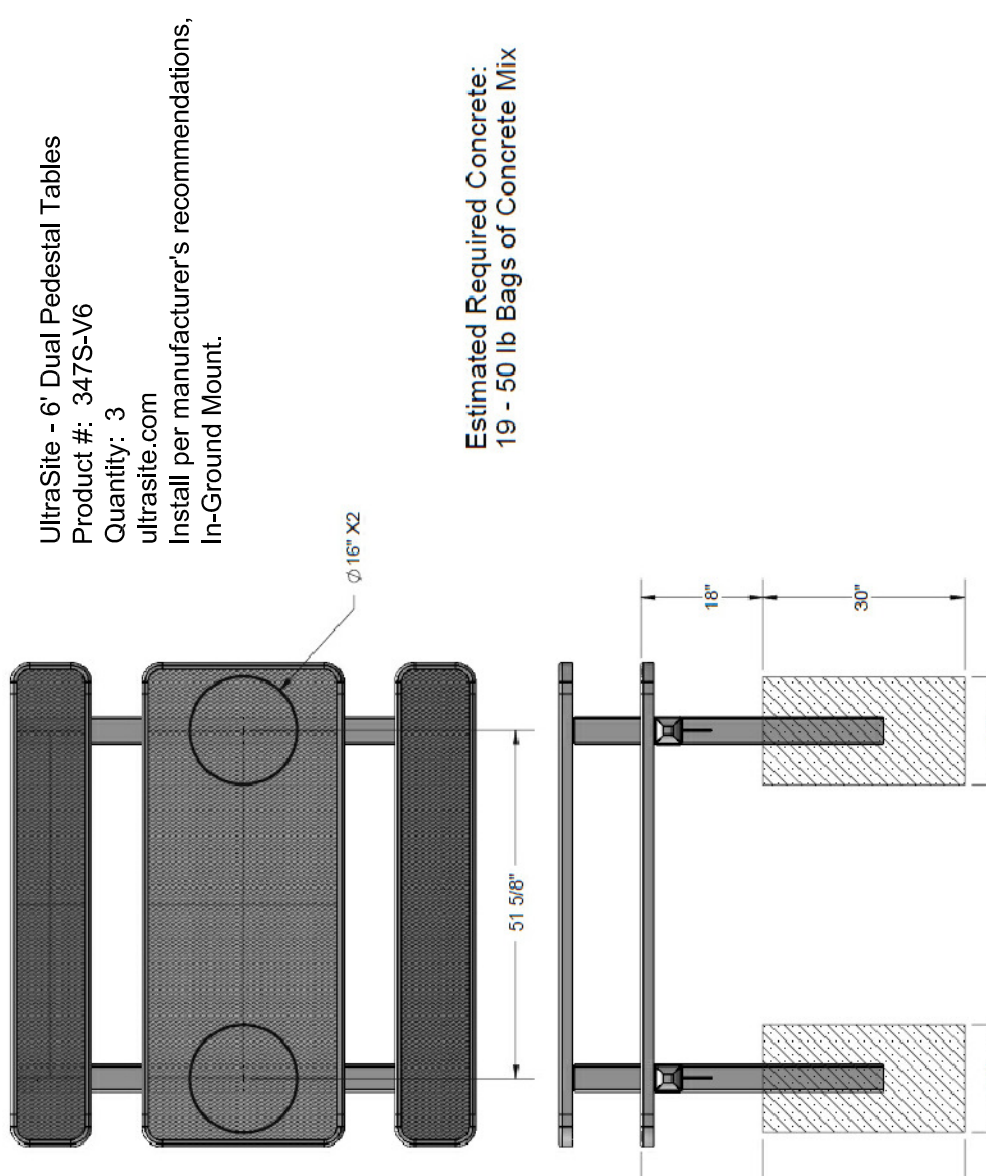
Trash Receptacle (In-ground Mount)

No Scale

Overall Dimensions



Installation/Footers

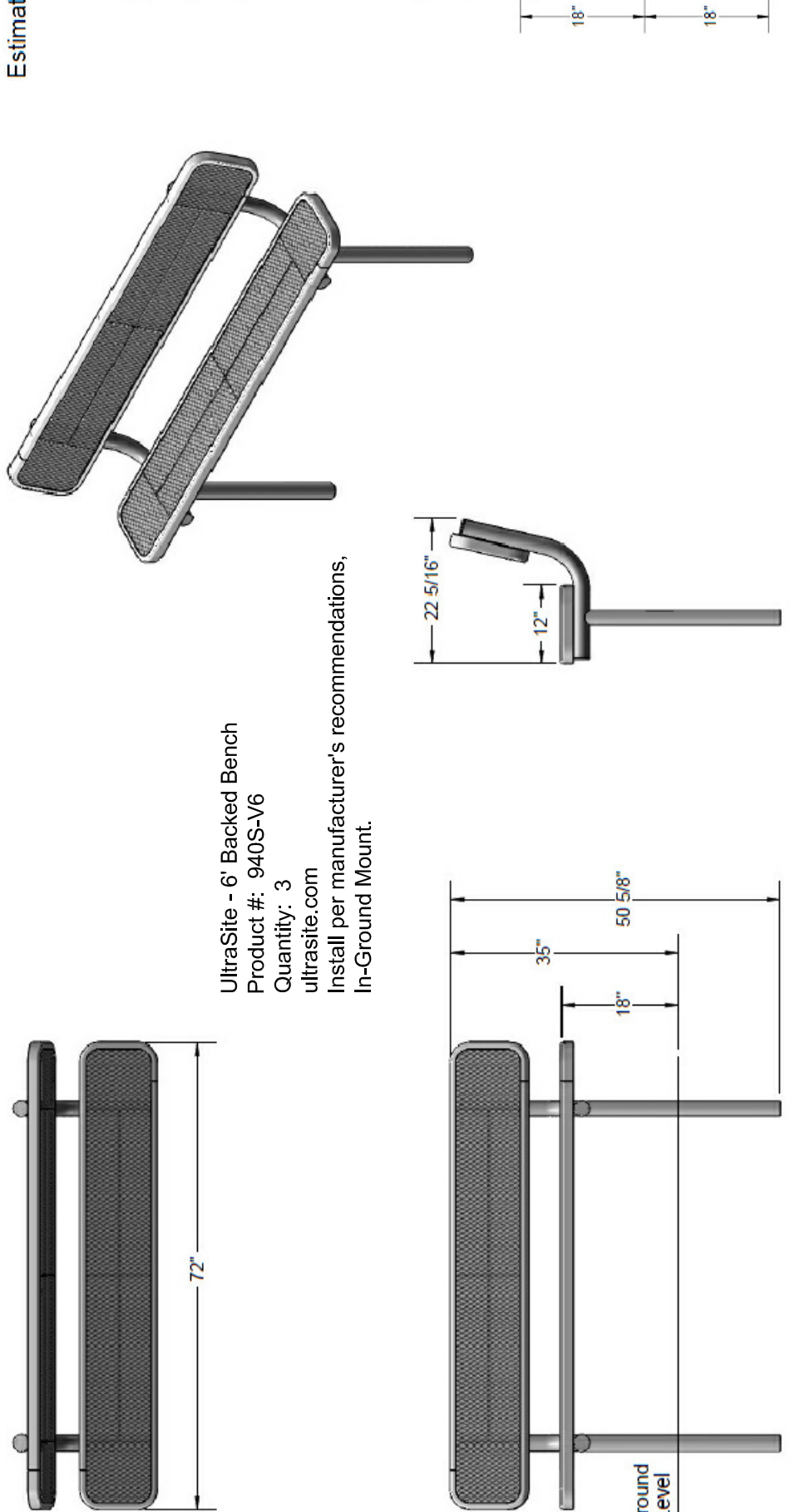


4

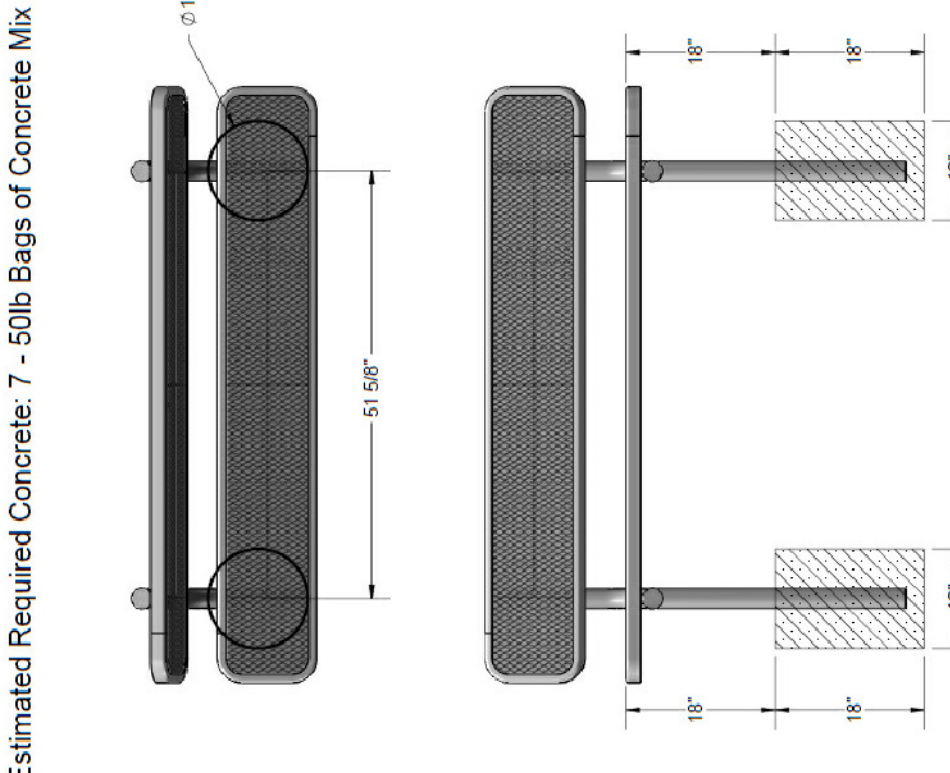
6' Dual Pedestal Table (In-ground Mount)

No Scale

Overall Dimensions



Installation/Footers



6

6' Backed Bench (In-ground Mount)

No Scale