

GENERAL CONSTRUCTION NOTES:

FALCON HIGH SCHOOL ADDITION

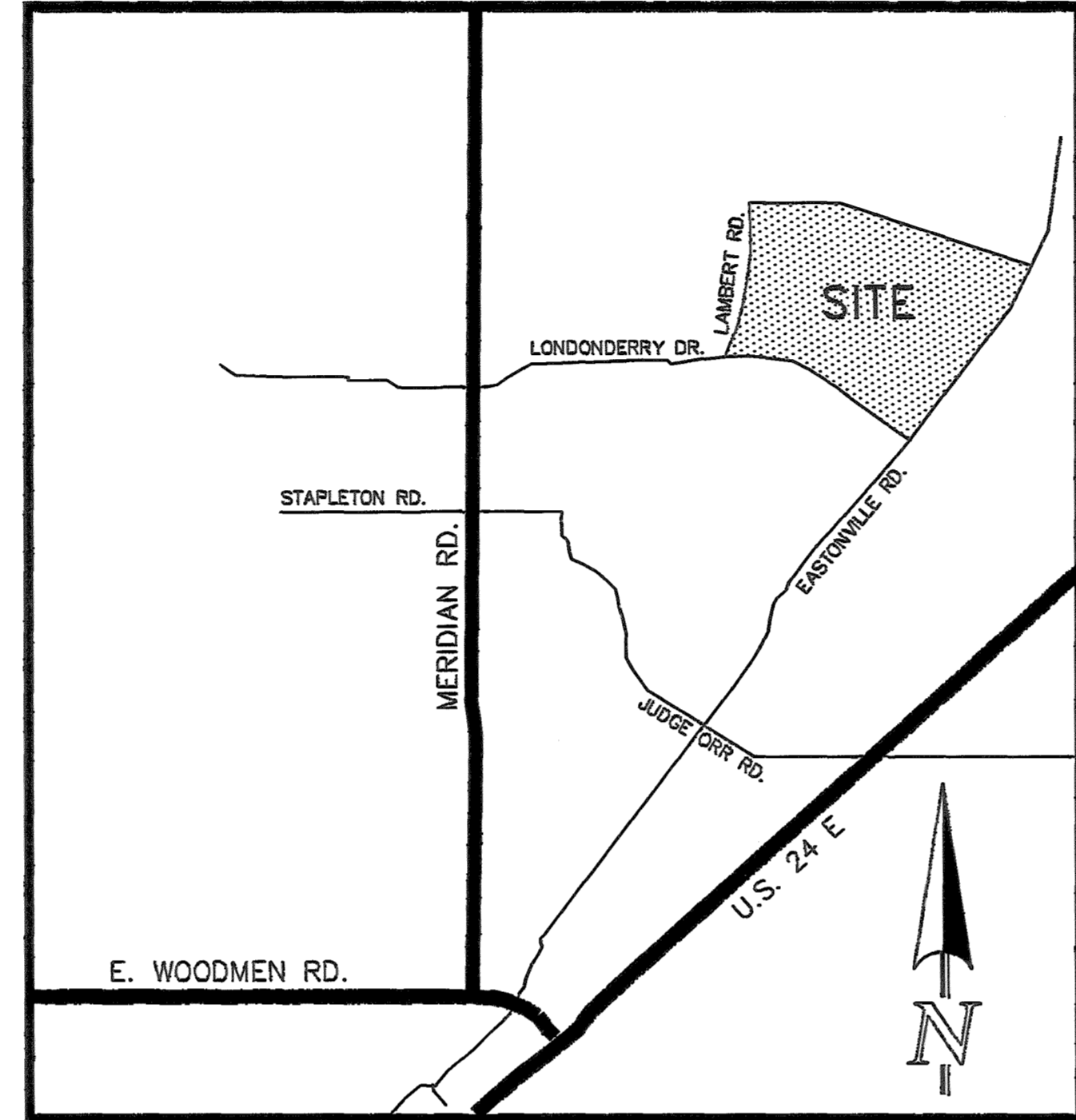
COUNTY OF EL PASO, STATE OF COLORADO

CONSTRUCTION PLANS

JULY 2017

PORTION OF SECTION 28 AND 29,
TOWNSHIP 12 SOUTH, RANGE 64
WEST OF THE 6TH P.M.

- ALL CONSTRUCTION WITHIN EL PASO COUNTY PUBLIC RIGHT-WAYS SHALL BE IN ACCORDANCE WITH MOST CURRENT STANDARDS AND SPECIFICATIONS OF EL PASO COUNTY.
- IT SHALL BE THE RESPONSIBILITY OF THE CONTRACTOR TO VERIFY THE EXISTENCE AND LOCATION OF ALL UNDERGROUND UTILITIES ALONG THE ROUTE OF THE WORK. THE OMISSION FROM OR THE INCLUSION OF UTILITY LOCATIONS ON THE PLANS IS NOT TO BE CONSIDERED AS THE NONEXISTENCE OF OR A DEFINITE LOCATION OF EXISTING UNDERGROUND UTILITIES.
- BEFORE COMMENCING ANY EXCAVATION, CALL 811 FOR EXISTING UTILITY LOCATIONS.
- THE CONTRACTOR WILL TAKE THE NECESSARY PRECAUTIONS TO PROTECT EXISTING UTILITIES FROM DAMAGE DUE TO THIS OPERATION. ANY DAMAGE TO THE UTILITIES WILL BE REPAIRED AT THE CONTRACTOR'S EXPENSE, AND ANY SERVICE DISRUPTION WILL BE SETTLED BY THE CONTRACTOR.
- ADDITIONAL EROSION CONTROL STRUCTURES MAY BE REQUIRED AT THE TIME OF CONSTRUCTION.
- ALL BACKFILL, SUB-BASE AND/OR BASE COURSE (CLASS 6) MATERIAL SHALL BE COMPACTED TO THE SOILS ENGINEER'S RECOMMENDATIONS, AND APPROVED BY EL PASO COUNTY DEVELOPMENT SERVICES ENGINEERING DIVISION.
- ALL STATIONING IS CENTERLINE UNLESS OTHERWISE INDICATED. ALL ELEVATIONS ARE FLOWLINE UNLESS OTHERWISE INDICATED.
- ALL DISTURBED PAVEMENT EDGES SHALL BE CUT TO NEAT LINES. REPAIR SHALL CONFORM TO THE EPC ECM APPENDIX K - 1.2C.
- ALL INTERSECTION ACCESSES TO BE CONSTRUCTED WITH A 25 FOOT SIGHT VISIBILITY TRIANGLES.
- ALL CULVERT AND STORM DRAIN PIPES SHALL BE SMOOTH INTERIOR CORRUGATED POLYETHYLENE PIPE (HDPE), REINFORCED CONCRETE PIPE (RCP). ALL CULVERTS SHALL BE PLACED COMPLETE WITH FLARED END SECTIONS. ADEQUACY OF MATERIAL THICKNESS FOR ANY CSP INSTALLED SHALL BE VERIFIED BY OWNER'S GEOTECHNICAL ENGINEER TO SUPPORT MINIMUM 50 YEAR DESIGN LIFE. CULVERTS MUST CONFORM TO EPC ECM SECTION 3.52 - CULVERTS.
- ASPHALT THICKNESS AND BASE COURSE THICKNESS (COMPACTED) FOR ROADS SHALL BE PER DESIGN REPORT BY OWNER'S GEOTECHNICAL ENGINEER. OWNER'S GEOTECHNICAL ENGINEER TO BE ON SITE AT TIME OF ROAD CONSTRUCTION TO EVALUATE SOIL CONDITIONS AND DETERMINE IF ADDITIONAL MEASURES ARE NECESSARY TO ASSURE STABILITY OF THE NEW ROADS. PAVEMENT DESIGN SHALL BE APPROVED BY EL PASO COUNTY DEVELOPMENT SERVICES ENGINEERING DIVISION PRIOR TO CONSTRUCTION.
- TYPE II RIP-RAP WITH 4" OF TYPE II GRANULAR BEDDING AND MIRAFI 180N OR EQUAL MAY BE SUBSTITUTED WHERE TYPE I RIP-RAP WITH MIRAFI FW 700 OR EQUAL IS SPECIFIED.
- ALL MATERIALS AND INSTALLATION PROCEDURES SHALL BE IN COMPLIANCE WITH ANY AND ALL APPLICABLE EL PASO COUNTY STANDARDS.
- ALL POTABLE WATER MAINS SHALL BE AWWA C900-SDR18 PVC WITH PUSH-ON SINGLE GASKET TYPE JOINTS AND SHALL MEET THE REQUIREMENTS OF ANSI/NSF 61.
- ALL WATER MAIN FITTINGS SHALL BE MADE FROM GRAY-IRON OR DUCTILE IRON AND FURNISHED WITH MECHANICAL JOINT ENDS. ALL FITTINGS SHALL HAVE A PRESSURE RATING OF 250 PSI AND SHALL MEET THE REQUIREMENTS OF ANSI/NSF 61.
- ALL WATER LINE BENDS, TEES, BLOW-OFFS AND PLUGS AT DEAD-END MAINS SHALL BE PROTECTED FROM THRUST BY USING CONCRETE THRUST BLOCKS AND/OR ROODING AND RESTRAINED PIPE.
- MAXIMUM DEFLECTION OF 8" & 12" PVC WATER MAIN JOINTS IS 4 DEGREES. CORRESPONDING MINIMUM CURVE RADIUS IS 286'. ADDITIONAL 11.25' OR 22.5' BENDS MAY BE REQUIRED FOR PROPER ALIGNMENT.
- CONTRACTOR IS RESPONSIBLE FOR PROVIDING DETAILED AS-BUILTS OF ALL WATER MAIN, STORM SEW AND SAN. SEW. MAIN INSTALLATIONS, INCLUDING ACCURATE DISTANCES OF MAIN LINES, VALVES, FITTINGS, MANHOLES AND LOCATIONS OF WATER AND SEWER SERVICES.
- SANITARY SEWER PIPE AND FITTINGS: PVC 4"-8" ASTM D3034, TYPE PSM, SDR 35; PUSH-ON JOINTS AND MOLDED RUBBER GASKETS MAXIMUM HORIZONTAL DEFLECTION, AFTER INSTALLATION AND BACK FILLING SHALL NOT EXCEED 3% OF THE PIPE DIAMETER. (MINIMUM CURVE RADIUS IS 100' FOR 8" PVC SAN. SEW. MAIN)



BENCHMARK:
FIMS MONUMENT E-24 A US&GS BRASS CAP BENCHMARK SET IN CONCRETE APPROXIMATELY 50 FEET NORTH OF THE CENTERLINE OF JUDGE ORR ROAD AND APPROXIMATELY 170 FEET NORTHWEST OF THE CENTERLINE OF U.S. HIGHWAY 24. ELEVATION=6898.20'

VICINITY MAP
NOT TO SCALE

EL PASO COUNTY GRADING AND EROSION CONTROL NOTES:

- CONSTRUCTION MAY NOT COMMENCE UNTIL A CONSTRUCTION PERMIT IS OBTAINED FROM PLANNING AND COMMUNITY DEVELOPMENT (PCD) AND A PRECONSTRUCTION CONFERENCE IS HELD WITH PCD INSPECTIONS.
- STORMWATER DISCHARGES FROM CONSTRUCTION SITES SHALL NOT CAUSE OR THREATEN TO CAUSE POLLUTION, CONTAMINATION, OR DEGRADATION OF STATE WATERS. ALL WORK AND EARTH DISTURBANCE SHALL BE DONE IN A MANNER THAT MINIMIZES POLLUTION OF ANY ON-SITE OR OFF SITE WATERS, INCLUDING WETLANDS.
- NOTWITHSTANDING ANYTHING DEPICTED IN THESE PLANS IN WORDS OR GRAPHIC REPRESENTATION, ALL DESIGN AND CONSTRUCTION RELATED TO ROADS, STORM DRAINAGE AND EROSION CONTROL SHALL CONFORM TO THE STANDARDS AND REQUIREMENTS OF THE MOST RECENT VERSION OF THE RELEVANT ADOPTED EL PASO COUNTY STANDARDS, INCLUDING THE LAND DEVELOPMENT CODE, THE ENGINEERING CRITERIA MANUAL, THE DRAINAGE CRITERIA MANUAL, AND THE DRAINAGE CRITERIA MANUAL VOLUME 2. ANY DEVIATIONS TO REGULATIONS AND STANDARDS MUST BE REQUESTED, AND APPROVED, IN WRITING.
- A SEPARATE STORMWATER MANAGEMENT PLAN (SWMP) FOR THIS PROJECT SHALL BE COMPLETED AND AN EROSION AND STORMWATER QUALITY CONTROL PERMIT (ESQCP) ISSUED PRIOR TO COMMENCING CONSTRUCTION. DURING CONSTRUCTION THE SWMP IS THE RESPONSIBILITY OF THE DESIGNATED STORMWATER MANAGER, SHALL BE LOCATED ON SITE AT ALL TIMES AND SHALL BE KEPT UP TO DATE WITH WORK PROGRESS AND CHANGES IN THE FIELD.
- ONCE THE ESQCP HAS BEEN ISSUED, THE CONTRACTOR MAY INSTALL THE INITIAL STAGE EROSION AND SEDIMENT CONTROL BMPs AS INDICATED ON THE GEO. A PRECONSTRUCTION MEETING BETWEEN THE CONTRACTOR, ENGINEER, AND EL PASO COUNTY WILL BE HELD PRIOR TO ANY CONSTRUCTION. IT IS THE RESPONSIBILITY OF THE APPLICANT TO COORDINATE THE MEETING TIME AND PLACE WITH COUNTY PCD INSPECTIONS STAFF.
- SOIL EROSION CONTROL MEASURES FOR ALL SLOPES, CHANNELS, DITCHES, OR ANY DISTURBED LAND AREA SHALL BE COMPLETED WITHIN 21 CALENDAR DAYS AFTER FINAL GRADING OR FINAL EARTH DISTURBANCE HAS BEEN COMPLETED. DISTURBED AREAS AND STOCKPILES WHICH ARE NOT AT FINAL GRADE BUT WILL REMAIN DORMANT FOR LONGER THAN 30 DAYS SHALL ALSO BE MULCHED WITHIN 21 DAYS AFTER INTERIM GRADING. AN AREA THAT IS GOING TO REMAIN IN AN INTERIM STATE FOR MORE THAN 60 DAYS SHALL ALSO BE SEEDDED. ALL TEMPORARY SOIL EROSION CONTROL MEASURES AND BMPs SHALL BE MAINTAINED UNTIL PERMANENT SOIL EROSION CONTROL MEASURES ARE IMPLEMENTED AND ESTABLISHED.
- TEMPORARY SOIL EROSION CONTROL FACILITIES SHALL BE REMOVED AND EARTH DISTURBANCE AREAS GRADED AND STABILIZED WITH PERMANENT SOIL EROSION CONTROL MEASURES PURSUANT TO STANDARDS AND SPECIFICATION PRESCRIBED IN THE DCM VOLUME II AND THE ENGINEERING CRITERIA MANUAL (ECM) APPENDIX I.
- ALL PERSONS ENGAGED IN EARTH DISTURBANCE SHALL IMPLEMENT AND MAINTAIN ACCEPTABLE SOIL EROSION AND SEDIMENT CONTROL MEASURES INCLUDING BMPs IN CONFORMANCE WITH THE EROSION CONTROL TECHNICAL STANDARDS OF THE DRAINAGE CRITERIA MANUAL (DCM) VOLUME II AND IN ACCORDANCE WITH THE STORMWATER MANAGEMENT PLAN (SWMP).
- ALL TEMPORARY EROSION CONTROL FACILITIES INCLUDING BMPs AND ALL PERMANENT FACILITIES INTENDED TO CONTROL EROSION OF ANY EARTH DISTURBANCE OPERATIONS, SHALL BE INSTALLED AS DEFINED IN THE APPROVED PLANS, THE SWMP AND THE DCM VOLUME II AND MAINTAINED THROUGHOUT THE DURATION OF THE EARTH DISTURBANCE OPERATION.
- ANY EARTH DISTURBANCE SHALL BE CONDUCTED IN SUCH A MANNER SO AS TO EFFECTIVELY REDUCE ACCELERATED SOIL EROSION AND RESULTING SEDIMENTATION. ALL DISTURBANCES SHALL BE DESIGNED, CONSTRUCTED, AND COMPLETED SO THAT THE EXPOSED AREA OF ANY DISTURBED LAND SHALL BE LIMITED TO THE SHORTEST PRACTICAL PERIOD OF TIME.
- ANY TEMPORARY OR PERMANENT FACILITY DESIGNED AND CONSTRUCTED FOR THE CONVEYANCE OF STORMWATER AROUND, THROUGH, OR FROM THE EARTH DISTURBANCE AREA SHALL BE DESIGNED TO LIMIT THE DISCHARGE TO A NON-EROSIVE VELOCITY.
- CONCRETE WASH WATER SHALL BE CONTAINED AND DISPOSED OF IN ACCORDANCE WITH THE SWMP. NO WASH WATER SHALL BE DISCHARGED TO OR ALLOWED TO RUNOFF TO STATE WATERS, INCLUDING ANY SURFACE OR SUBSURFACE STORM DRAINAGE SYSTEM OR FACILITIES.
- EROSION CONTROL BLANKETING IS TO BE USED ON SLOPES STEEPER THAN 3:1.
- BUILDING, CONSTRUCTION, EXCAVATION, OR OTHER WASTE MATERIALS SHALL NOT BE TEMPORARILY PLACED OR STORED IN THE STREET, ALLEY, OR OTHER PUBLIC WAY, UNLESS IN ACCORDANCE WITH AN APPROVED TRAFFIC CONTROL PLAN. BMPs MAY BE REQUIRED BY EL PASO COUNTY ENGINEERING IF DEEMED NECESSARY, BASED ON SPECIFIC CONDITIONS AND CIRCUMSTANCES.
- VEHICLE TRACKING OF SOILS AND CONSTRUCTION DEBRIS OFF-SITE SHALL BE MINIMIZED. MATERIALS TRACKED OFFSITE SHALL BE CLEANED UP AND PROPERLY DISPOSED OF IMMEDIATELY.
- CONTRACTOR SHALL BE RESPONSIBLE FOR THE REMOVAL OF ALL WASTES FROM THE CONSTRUCTION SITE FOR DISPOSAL IN ACCORDANCE WITH LOCAL AND STATE REGULATORY REQUIREMENTS. NO CONSTRUCTION DEBRIS, TREE SLASH, BUILDING MATERIAL WASTES OR UNUSED BUILDING MATERIALS SHALL BE BURIED, DUMPED, OR DISCHARGED AT THE SITE.
- THE OWNER, SITE DEVELOPER, CONTRACTOR, AND/OR THEIR AUTHORIZED AGENTS SHALL BE RESPONSIBLE FOR THE REMOVAL OF ALL CONSTRUCTION DEBRIS, DIRT, TRASH, ROCK, SEDIMENT, AND SAND THAT MAY ACCUMULATE IN THE STORM SEWER OR OTHER DRAINAGE CONVEYANCE SYSTEM AND STORMWATER APPURTENANCES AS A RESULT OF SITE DEVELOPMENT.
- THE QUANTITY OF MATERIALS STORED ON THE PROJECT SITE SHALL BE LIMITED, AS MUCH AS PRACTICAL, TO THAT QUANTITY REQUIRED TO PERFORM THE WORK IN AN ORDERLY SEQUENCE. ALL MATERIALS STORED ON-SITE SHALL BE STORED IN A NEAT, ORDERLY MANNER, IN THEIR ORIGINAL CONTAINERS, WITH ORIGINAL MANUFACTURER'S LABELS.
- NO CHEMICALS ARE TO BE USED BY THE CONTRACTOR, WHICH HAVE THE POTENTIAL TO BE RELEASED IN STORMWATER UNLESS PERMISSION FOR THE USE OF A SPECIFIC CHEMICAL IS GRANTED IN WRITING BY THE ECM ADMINISTRATOR. IN GRANTING THE USE OF SUCH CHEMICALS, SPECIAL CONDITIONS AND MONITORING MAY BE REQUIRED.
- BULK STORAGE STRUCTURES FOR PETROLEUM PRODUCTS AND OTHER CHEMICALS SHALL HAVE ADEQUATE PROTECTION SO AS TO CONTAIN ALL SPILLS AND PREVENT ANY SPILLED MATERIAL FROM ENTERING STATE WATERS, INCLUDING ANY SURFACE OR SUBSURFACE STORM DRAINAGE SYSTEM OR FACILITIES.
- NO PERSON SHALL CAUSE THE IMPEDIMENT OF STORMWATER FLOW IN THE FLOW LINE OF THE CURB AND GUTTER OR IN THE DITCHLINE.
- INDIVIDUALS SHALL COMPLY WITH THE 'COLORADO WATER QUALITY CONTROL ACT' (TITLE 25, ARTICLE 8, CRS), AND THE 'CLEAN WATER ACT' (33 USC 1344), IN ADDITION TO THE REQUIREMENTS INCLUDED IN THE DCM VOLUME II AND THE ECM APPENDIX I. ALL APPROPRIATE PERMITS MUST BE OBTAINED BY THE CONTRACTOR PRIOR TO CONSTRUCTION (NPDES, FLOODPLAIN, 404, FUGITIVE DUST, ETC.). IN THE EVENT OF CONFLICTS BETWEEN THESE REQUIREMENTS AND LAWS, RULES, OR REGULATIONS OF OTHER FEDERAL, STATE, OR COUNTY AGENCIES, THE MORE RESTRICTIVE LAWS, RULES, OR REGULATIONS SHALL APPLY.
- ALL CONSTRUCTION TRAFFIC MUST ENTER/EXIT THE SITE AT APPROVED CONSTRUCTION ACCESS POINTS.
- PRIOR TO ACTUAL CONSTRUCTION THE PERMITEE SHALL VERIFY THE LOCATION OF EXISTING UTILITIES.
- A WATER SOURCE SHALL BE AVAILABLE ON SITE DURING EARTHWORK OPERATIONS AND UTILIZED AS REQUIRED TO MINIMIZE DUST FROM EARTHWORK EQUIPMENT AND WIND.
- THE SOILS REPORT FOR THIS SITE HAS BEEN PREPARED BY RMG ENGINEERS GROUP, TITLED "FALCON HS EXPANSION GEOTECHNICAL REPORT", DATED FEBRUARY 3, 2017 AND SHALL BE CONSIDERED A PART OF THESE PLANS.
- AT LEAST TEN DAYS PRIOR TO THE ANTICIPATED START OF CONSTRUCTION, FOR PROJECTS THAT WILL DISTURB 1 ACRE OR MORE, THE OWNER OR OPERATOR OF CONSTRUCTION ACTIVITY SHALL SUBMIT A PERMIT APPLICATION FOR STORMWATER DISCHARGE TO THE COLORADO DEPARTMENT OF PUBLIC HEALTH AND ENVIRONMENT, WATER QUALITY DIVISION. THE APPLICATION CONTAINS CERTIFICATION OF COMPLETION OF A STORMWATER MANAGEMENT PLAN (SWMP), OF WHICH THIS GRADING AND EROSION CONTROL PLAN MAY BE A PART. FOR INFORMATION OR APPLICATION MATERIALS CONTACT:
COLORADO DEPARTMENT OF PUBLIC HEALTH AND ENVIRONMENT
WATER QUALITY CONTROL DIVISION
WOOD - PERMITS
4300 CHERRY CREEK DRIVE SOUTH
DENVER, CO 80248-1530
ATTN: PERMITS UNIT

AGENCIES:

- DEVELOPER:** SCHOOL DISTRICT 49
10850 E WOODMEN ROAD
PEYTON, CO 80831
MS. MELISSA ANDREWS (719) 494-8997
- CIVIL ENGINEER:** CLASSIC CONSULTING ENGINEERS & SURVEYORS
619 N. CASCADE AVE., SUITE 200
COLORADO SPRINGS, CO 80903
MR. KYLE R. CAMPBELL, P.E. (719) 785-0790
- COUNTY ENGINEERING:** PUBLIC SERVICES DEPARTMENT
3275 AKERS DRIVE
COLORADO SPRINGS, COLORADO 80922
MRS. JENNIFER IRVINE, P.E. (719) 520-6888
- WATER & SANITATION DISTRICT:** MERIDIAN SERVICE METROPOLITAN DISTRICT
11886 STAPLETON DRIVE
FALCON, CO 80831
(719) 495-6567
- FIRE DISTRICT:** FALCON FIRE PROTECTION DISTRICT
7030 OLD MERIDIAN ROAD,
FALCON, CO 80831
(719) 495-4050
- GAS COMPANY:** CITY OF COLORADO SPRINGS
101 SOUTH CONEJOS STREET
COLORADO SPRINGS, COLORADO 80903
MR. TIM BENEDICT, (719) 668-3574
- ELECTRIC COMPANY:** MOUNTAIN VIEW ELECTRIC
P.O. BOX 1600
LIMON, COLORADO 80828
MR. LES ULFERS, (719) 495-2283
- TELEPHONE COMPANY:** CENTURY LINK (LOCATORS) 811
AT & T (LOCATORS) 811

APPROVALS:

ENGINEER'S STATEMENT:

THIS GRADING AND EROSION CONTROL PLAN WAS PREPARED UNDER MY DIRECTION AND SUPERVISION AND IS CORRECT TO THE BEST OF MY KNOWLEDGE AND BELIEF. SAID PLAN HAS BEEN PREPARED ACCORDING TO THE CRITERIA ESTABLISHED BY THE COUNTY FOR GRADING AND EROSION CONTROL PLANS.

I ACCEPT RESPONSIBILITY FOR ANY LIABILITY CAUSED BY ANY NEGLIGENT ACTS, ERRORS OR OMISSIONS ON MY PART IN PREPARING THIS PLAN.

Kyle R. Campbell
KYLE R. CAMPBELL, COLORADO P.E. #29794
FOR AND ON THE BEHALF OF CLASSIC CONSULTING ENGINEERS & SURVEYORS

11-8-17
DATE

OWNER/DEVELOPER STATEMENT:

THE OWNER WILL COMPLY WITH THE REQUIREMENTS OF THE GRADING AND EROSION CONTROL PLAN.

Melissa Andrews
SCHOOL DISTRICT 49
MS. MELISSA ANDREWS

11/9/2017
DATE

EL PASO COUNTY:

COUNTY PLAN REVIEW IS PROVIDED ONLY FOR GENERAL CONFORMANCE WITH COUNTY DESIGN CRITERIA. THE COUNTY IS NOT RESPONSIBLE FOR THE ACCURACY AND ADEQUACY OF THE DESIGN, DIMENSIONS, AND/OR ELEVATIONS WHICH SHALL BE CONFIRMED AT THE JOB SITE. THE COUNTY THROUGH THE APPROVAL OF THIS DOCUMENT ASSUMES NO RESPONSIBILITY FOR COMPLETENESS AND/OR ACCURACY OF THIS DOCUMENT.

FILED IN ACCORDANCE WITH THE REQUIREMENTS OF THE EL PASO COUNTY LAND DEVELOPMENT CODE, DRAINAGE CRITERIA, AND ENGINEERING CRITERIA MANUAL AS AMENDED.

JENNIFER IRVINE, P.E.
COUNTY ENGINEER / ECM ADMINISTRATOR

DATE

SHEET INDEX

TITLE SHEET	SHEET 1 OF 5
DETAILED GRADING & EROSION CONTROL PLAN	SHEET 2 OF 5
DETAILED GRADING & EROSION CONTROL PLAN	SHEET 3 OF 5
DETAILS SHEET	SHEET 4 OF 5
INTERCEPTOR DRAIN PLAN	SHEET 5 OF 5

EL PASO COUNTY PROJECT NO. PPR-17-048

48 HOURS BEFORE YOU DIG,
CALL UTILITY LOCATORS
811
UTILITY NOTIFICATION CENTER OF COLORADO
IT'S THE LAW

THE LOCATIONS OF EXISTING UNDERGROUND UTILITIES ARE SHOWN IN AN APPROXIMATE WAY ONLY. THE CONTRACTOR SHALL DETERMINE THE EXACT LOCATION OF ALL EXISTING UTILITIES BEFORE COMMENCING WORK. THE CONTRACTOR SHALL BE FULLY RESPONSIBLE FOR ANY AND ALL DAMAGES WHICH MIGHT BE CAUSED BY HIS FAILURE TO EXACTLY LOCATE AND PRESERVE ANY AND ALL UNDERGROUND UTILITIES.

NO.	REVISION	DATE

REVIEW:

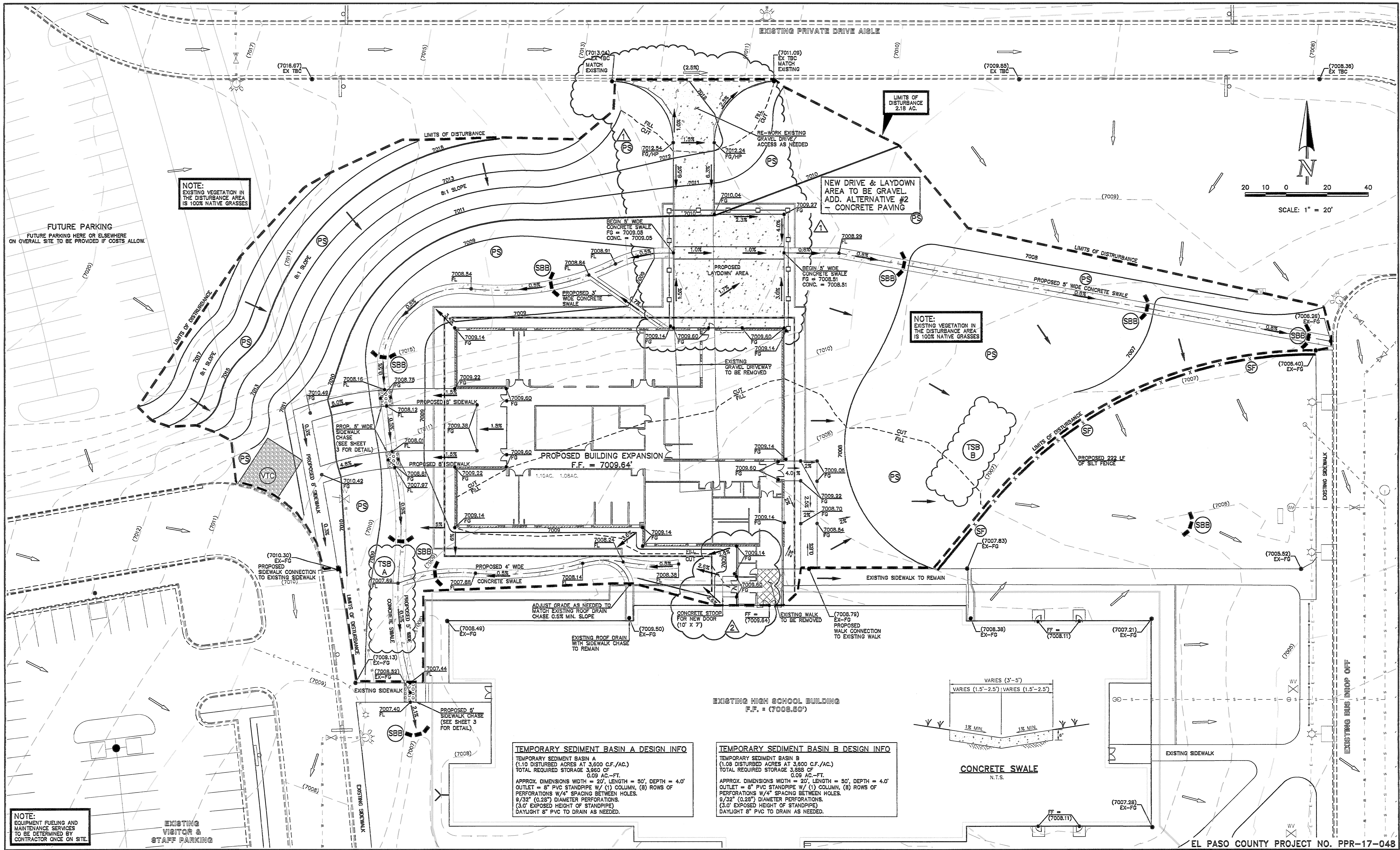
PREPARED UNDER MY DIRECT SUPERVISION FOR AND ON BEHALF OF CLASSIC CONSULTING ENGINEERS AND SURVEYORS, LLC

Kyle R. Campbell
KYLE R. CAMPBELL, COLORADO P.E. #29794

CLASSIC
CONSULTING ENGINEERS & SURVEYORS

619 N. Cascade Avenue, Suite 200 (719)785-0790
Colorado Springs, Colorado 80903 (719)785-0789(Fax)

FALCON HIGH SCHOOL ADDITION	FALCON SCHOOL DISTRICT 49	CONSTRUCTION PLANS	TITLE SHEET
DESIGNED BY	MAL	SCALE	DATE 07/28/17
DRAWN BY	MES	(H) 1"=VARIES	SHEET 1 OF 5
CHECKED BY	(V) 1"= N/A	JOB NO.	2366.92



NOTE:
EXISTING VEGETATION IN
THE DISTURBANCE AREA
IS 100% NATIVE GRASSES

FUTURE PARKING
FUTURE PARKING HERE OR ELSEWHERE
ON OVERALL SITE TO BE PROVIDED IF COSTS ALLOW.

LIMITS OF
DISTURBANCE
2.18 AC.

NEW DRIVE & LAYDOWN
AREA TO BE GRAVEL.
ADD. ALTERNATIVE #2
- CONCRETE PAVING

NOTE:
EXISTING VEGETATION IN
THE DISTURBANCE AREA
IS 100% NATIVE GRASSES

TEMPORARY SEDIMENT BASIN A DESIGN INFO
TEMPORARY SEDIMENT BASIN A
(1.10 DISTURBED ACRES AT 3,600 C.F./AC.)
TOTAL REQUIRED STORAGE 3,960 CF
0.09 AC.-FT.
APPROX. DIMENSIONS WIDTH = 20', LENGTH = 50', DEPTH = 4.0'
OUTLET = 8" PVC STANDPIPE W/ (1) COLUMN, (8) ROWS OF
PERFORATIONS W/ 4" SPACING BETWEEN HOLES.
9/32" (0.28") DIAMETER PERFORATIONS.
(3.0' EXPOSED HEIGHT OF STANDPIPE)
DAYLIGHT 8" PVC TO DRAIN AS NEEDED.

TEMPORARY SEDIMENT BASIN B DESIGN INFO
TEMPORARY SEDIMENT BASIN B
(1.08 DISTURBED ACRES AT 3,600 C.F./AC.)
TOTAL REQUIRED STORAGE 3,888 CF
0.09 AC.-FT.
APPROX. DIMENSIONS WIDTH = 20', LENGTH = 50', DEPTH = 4.0'
OUTLET = 8" PVC STANDPIPE W/ (1) COLUMN, (8) ROWS OF
PERFORATIONS W/ 4" SPACING BETWEEN HOLES.
9/32" (0.28") DIAMETER PERFORATIONS.
(3.0' EXPOSED HEIGHT OF STANDPIPE)
DAYLIGHT 8" PVC TO DRAIN AS NEEDED.

CONCRETE SWALE
N.T.S.

NOTE:
EQUIPMENT FUELING AND
MAINTENANCE SERVICES
TO BE DETERMINED BY
CONTRACTOR ONCE ON SITE.

EXISTING
VISITOR &
STAFF PARKING

EL PASO COUNTY PROJECT NO. PPR-17-048

LEGEND	
(7000)	EXISTING CONTOUR MAJOR
7000	PROPOSED CONTOUR MAJOR
●	SPOT ELEVATION
→	FLOW DIRECTION AND GRADE
—	EDGE OF ASPHALT
FL	FLOW LINE OF CURB
TBC	TOP BACK OF CURB
FG	FINISHED GROUND
HP	HIGH POINT ELEVATION
LP	LOW POINT ELEVATION
(PS)	PERMANENT SEEDING
(SF)	SILT FENCE
(SBB)	STRAW BALE CHECK DAM
(VTC)	VEHICLE TRACKING CONTROL

48 HOURS BEFORE YOU DIG,
CALL UTILITY LOCATORS
811
UTILITY NOTIFICATION CENTER OF COLORADO
IT'S THE LAW

THE LOCATIONS OF EXISTING UNDERGROUND UTILITIES ARE SHOWN IN AN APPROXIMATE WAY ONLY. THE CONTRACTOR SHALL DETERMINE THE EXACT LOCATION OF ALL EXISTING UTILITIES BEFORE COMMENCING WORK. THE CONTRACTOR SHALL BE FULLY RESPONSIBLE FOR ANY AND ALL DAMAGES WHICH MIGHT BE CAUSED BY HIS FAILURE TO EXACTLY LOCATE AND PRESERVE ANY AND ALL UNDERGROUND UTILITIES.

NO.	REVISION	DATE
1	DRIVEWAY AND LAYDOWN AREA TO BE GRAVEL.	9/08/17
	ADD. ALTERNATIVE #2 - CONCRETE PAVING	
2	ASI-2 - SHIFTED DOOR SLIGHTLY	9/21/17

REVIEW:
PREPARED UNDER MY DIRECT SUPERVISION FOR AND ON BEHALF OF
CLASSIC CONSULTING ENGINEERS AND SURVEYORS, LLC

Kyle R. Campbell
KYLE R. CAMPBELL, COLORADO P.E. #29794

11.8.17
DATE

CLASSIC
CONSULTING
ENGINEERS & SURVEYORS

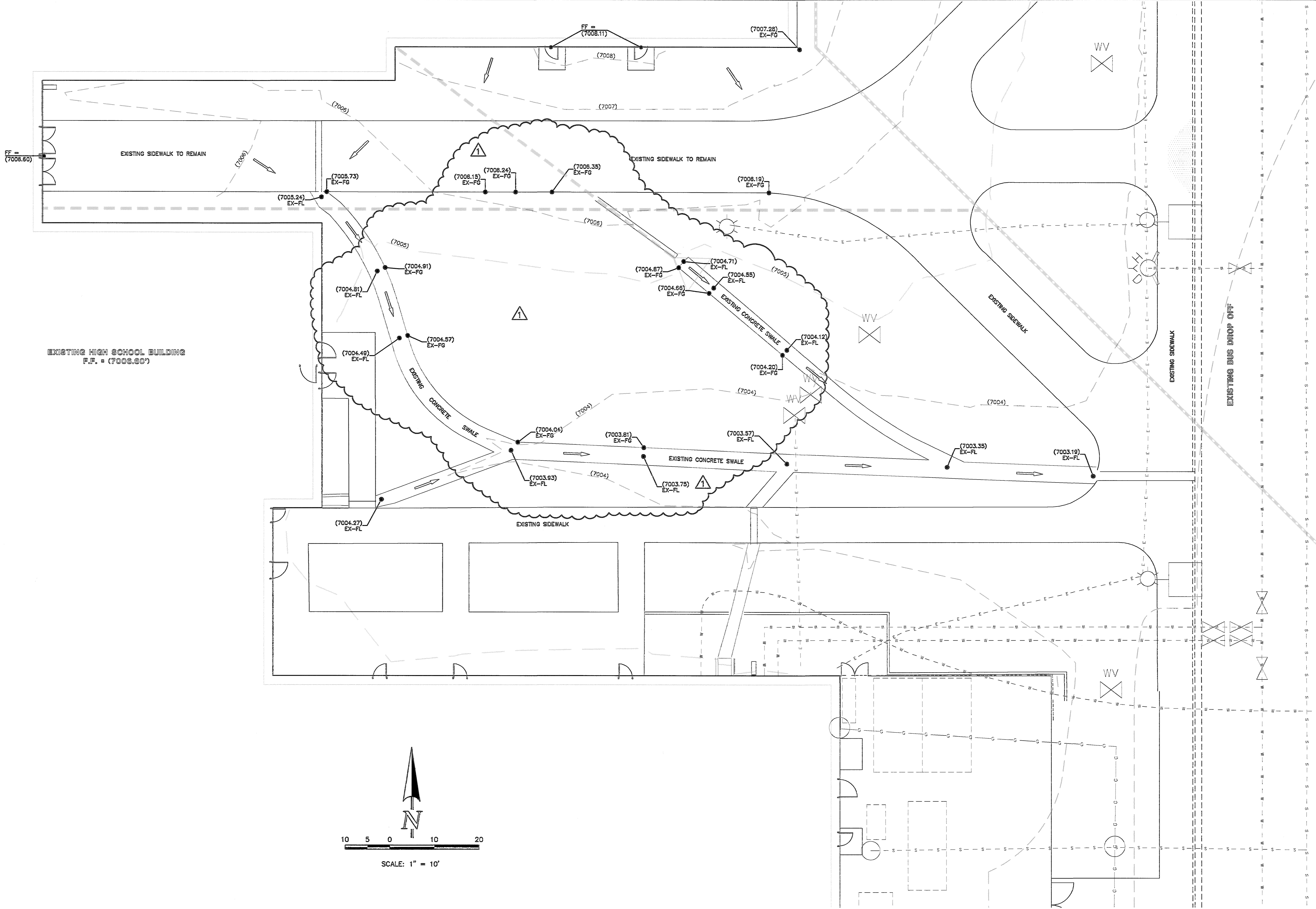
619 N. Cascade Avenue, Suite 200
Colorado Springs, Colorado 80903

(719) 785-0790
(719) 785-0799 (Fax)

FALCON HIGH SCHOOL ADDITION FALCON SCHOOL DISTRICT 49 CONSTRUCTION PLANS DETAILED GRADING & EROSION CONTROL PLAN			
DESIGNED BY	MAL	SCALE	DATE 07/28/17
DRAWN BY	MES	(H) 1" = 20'	SHEET 2 OF 5
CHECKED BY	(V) 1" = N/A	JOB NO.	2366.92

CLASSIC
CONSULTING
ENGINEERS & SURVEYORS

M:\236692\DRAWINGS\CONSTRUCT\TRMA.C 1:1-00-01.dwg, 11/17/2017 7:50:24 AM, E11



EL PASO COUNTY PROJECT NO. PPR-17-048

LEGEND

(7000)	EXISTING CONTOUR MAJOR	HP	HIGH POINT ELEVATION
7000	PROPOSED CONTOUR MAJOR	LP	LOW POINT ELEVATION
●	SPOT ELEVATION	(IP1)	BLOCK & ROCK SOCK
→	FLOW DIRECTION AND GRADE	(SF)	SILT FENCE
—	EDGE OF ASPHALT		
—	FLOW LINE OF CURB		
TBC	TOP BACK OF CURB		
FG	FINISHED GROUND		

**48 HOURS BEFORE YOU DIG,
CALL UTILITY LOCATORS
811**

UTILITY NOTIFICATION CENTER OF COLORADO
IT'S THE LAW

THE LOCATIONS OF EXISTING UNDERGROUND UTILITIES ARE SHOWN IN AN APPROXIMATE WAY ONLY. THE CONTRACTOR SHALL DETERMINE THE EXACT LOCATION OF ALL EXISTING UTILITIES BEFORE COMMENCING WORK. THE CONTRACTOR SHALL BE FULLY RESPONSIBLE FOR ANY AND ALL DAMAGES WHICH MIGHT BE CAUSED BY HIS FAILURE TO EXACTLY LOCATE AND PRESERVE ANY AND ALL UNDERGROUND UTILITIES.

NO. REVISION	DATE
1	9/08/17

REVIEW:

PREPARED UNDER MY DIRECT SUPERVISION FOR AND ON BEHALF OF CLASSIC CONSULTING ENGINEERS AND SURVEYORS, LLC

Kyle R. Campbell
KYLE R. CAMPBELL, COLORADO P.E. #29794

11.01.17
DATE

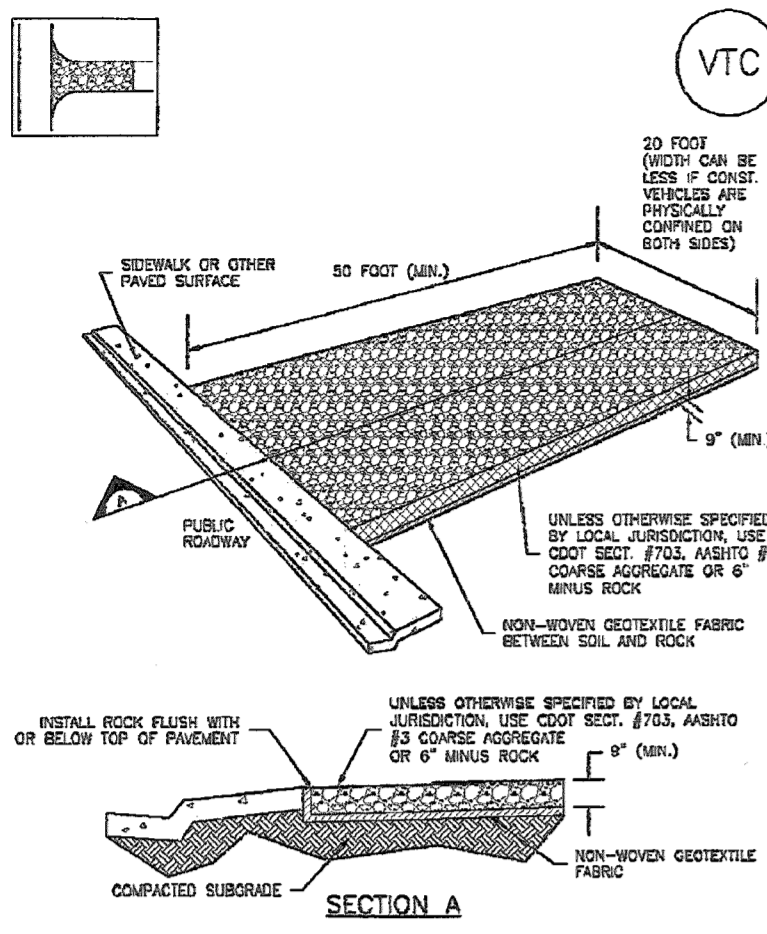
CLASSIC
CONSULTING ENGINEERS & SURVEYORS

619 N. Cascade Avenue, Suite 200
Colorado Springs, Colorado 80903
(719) 785-0790
(719) 785-0799 (Fax)

FALCON HIGH SCHOOL ADDITION FALCON SCHOOL DISTRICT 49 CONSTRUCTION PLANS DETAILED GRADING & EROSION CONTROL PLAN			
DESIGNED BY	MAL	SCALE	DATE 07/28/17
DRAWN BY	MES	(H) 1" = 10'	SHEET 3 OF 5
CHECKED BY	(V)	1" = N/A	JOB NO. 2366.92

R:\336692\DRAWINGS\CONTRIC\17-048.dwg, 11/7/2017 7:59:41 AM, E1

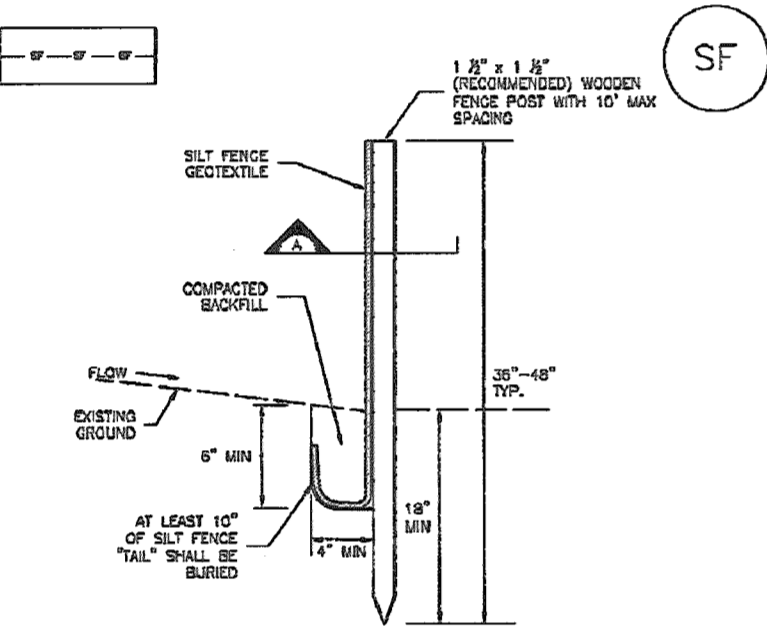
Vehicle Tracking Control (VTC) SM-4



VTC-1. AGGREGATE VEHICLE TRACKING CONTROL

November 2010 Urban Drainage and Flood Control District Urban Storm Drainage Criteria Manual Volume 3 VTC-3

Silt Fence (SF) SC-1

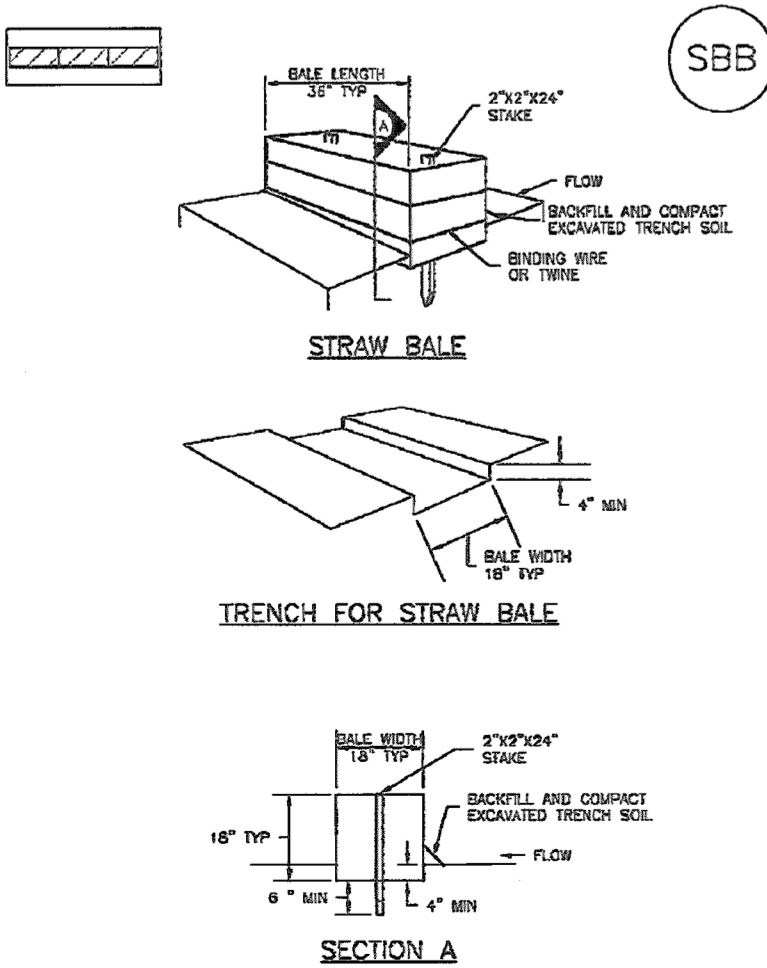


SILT FENCE

SF-1. SILT FENCE

November 2010 Urban Drainage and Flood Control District Urban Storm Drainage Criteria Manual Volume 3 SF-3

Straw Bale Barrier (SBB) SC-3



SBB-1. STRAW BALE

November 2010 Urban Drainage and Flood Control District Urban Storm Drainage Criteria Manual Volume 3 SBB-3

SM-4 Vehicle Tracking Control (VTC)

STANDARD CONSTRUCTION DETAILS/DETAIL INSTALLATION NOTES

- SEE PLAN VIEW FOR LOCATION OF CONSTRUCTION ENTRANCE/EXIT POINTS. PLACE OF CONSTRUCTION ENTRANCE/EXIT POINTS SHALL BE AS SHOWN ON PLAN. CONSTRUCTION ENTRANCE/EXIT POINTS SHALL BE AS SHOWN ON PLAN. CONSTRUCTION ENTRANCE/EXIT POINTS SHALL BE AS SHOWN ON PLAN.
- CONSTRUCTION ENTRANCE/EXIT POINTS SHALL BE AS SHOWN ON PLAN. CONSTRUCTION ENTRANCE/EXIT POINTS SHALL BE AS SHOWN ON PLAN. CONSTRUCTION ENTRANCE/EXIT POINTS SHALL BE AS SHOWN ON PLAN.
- CONSTRUCTION ENTRANCE/EXIT POINTS SHALL BE AS SHOWN ON PLAN. CONSTRUCTION ENTRANCE/EXIT POINTS SHALL BE AS SHOWN ON PLAN. CONSTRUCTION ENTRANCE/EXIT POINTS SHALL BE AS SHOWN ON PLAN.
- CONSTRUCTION ENTRANCE/EXIT POINTS SHALL BE AS SHOWN ON PLAN. CONSTRUCTION ENTRANCE/EXIT POINTS SHALL BE AS SHOWN ON PLAN. CONSTRUCTION ENTRANCE/EXIT POINTS SHALL BE AS SHOWN ON PLAN.
- CONSTRUCTION ENTRANCE/EXIT POINTS SHALL BE AS SHOWN ON PLAN. CONSTRUCTION ENTRANCE/EXIT POINTS SHALL BE AS SHOWN ON PLAN. CONSTRUCTION ENTRANCE/EXIT POINTS SHALL BE AS SHOWN ON PLAN.
- CONSTRUCTION ENTRANCE/EXIT POINTS SHALL BE AS SHOWN ON PLAN. CONSTRUCTION ENTRANCE/EXIT POINTS SHALL BE AS SHOWN ON PLAN. CONSTRUCTION ENTRANCE/EXIT POINTS SHALL BE AS SHOWN ON PLAN.
- CONSTRUCTION ENTRANCE/EXIT POINTS SHALL BE AS SHOWN ON PLAN. CONSTRUCTION ENTRANCE/EXIT POINTS SHALL BE AS SHOWN ON PLAN. CONSTRUCTION ENTRANCE/EXIT POINTS SHALL BE AS SHOWN ON PLAN.
- CONSTRUCTION ENTRANCE/EXIT POINTS SHALL BE AS SHOWN ON PLAN. CONSTRUCTION ENTRANCE/EXIT POINTS SHALL BE AS SHOWN ON PLAN. CONSTRUCTION ENTRANCE/EXIT POINTS SHALL BE AS SHOWN ON PLAN.
- CONSTRUCTION ENTRANCE/EXIT POINTS SHALL BE AS SHOWN ON PLAN. CONSTRUCTION ENTRANCE/EXIT POINTS SHALL BE AS SHOWN ON PLAN. CONSTRUCTION ENTRANCE/EXIT POINTS SHALL BE AS SHOWN ON PLAN.
- CONSTRUCTION ENTRANCE/EXIT POINTS SHALL BE AS SHOWN ON PLAN. CONSTRUCTION ENTRANCE/EXIT POINTS SHALL BE AS SHOWN ON PLAN. CONSTRUCTION ENTRANCE/EXIT POINTS SHALL BE AS SHOWN ON PLAN.

VTC-4 Urban Drainage and Flood Control District Urban Storm Drainage Criteria Manual Volume 3 November 2010

SC-1 Silt Fence (SF)

THE FOLLOWING NOTES APPLY TO ALL SILT FENCES UNLESS OTHERWISE NOTED

- SILT FENCES SHALL BE CONSTRUCTED WITH A 1.5" DIA. WOODEN FENCE POST WITH 10" DIA. HOLE. THE FENCE SHALL BE SUPPORTED BY A 4" DIA. PIPE. THE FENCE SHALL BE SUPPORTED BY A 4" DIA. PIPE.
- SILT FENCES SHALL BE CONSTRUCTED WITH A 1.5" DIA. WOODEN FENCE POST WITH 10" DIA. HOLE. THE FENCE SHALL BE SUPPORTED BY A 4" DIA. PIPE. THE FENCE SHALL BE SUPPORTED BY A 4" DIA. PIPE.
- SILT FENCES SHALL BE CONSTRUCTED WITH A 1.5" DIA. WOODEN FENCE POST WITH 10" DIA. HOLE. THE FENCE SHALL BE SUPPORTED BY A 4" DIA. PIPE. THE FENCE SHALL BE SUPPORTED BY A 4" DIA. PIPE.
- SILT FENCES SHALL BE CONSTRUCTED WITH A 1.5" DIA. WOODEN FENCE POST WITH 10" DIA. HOLE. THE FENCE SHALL BE SUPPORTED BY A 4" DIA. PIPE. THE FENCE SHALL BE SUPPORTED BY A 4" DIA. PIPE.
- SILT FENCES SHALL BE CONSTRUCTED WITH A 1.5" DIA. WOODEN FENCE POST WITH 10" DIA. HOLE. THE FENCE SHALL BE SUPPORTED BY A 4" DIA. PIPE. THE FENCE SHALL BE SUPPORTED BY A 4" DIA. PIPE.
- SILT FENCES SHALL BE CONSTRUCTED WITH A 1.5" DIA. WOODEN FENCE POST WITH 10" DIA. HOLE. THE FENCE SHALL BE SUPPORTED BY A 4" DIA. PIPE. THE FENCE SHALL BE SUPPORTED BY A 4" DIA. PIPE.
- SILT FENCES SHALL BE CONSTRUCTED WITH A 1.5" DIA. WOODEN FENCE POST WITH 10" DIA. HOLE. THE FENCE SHALL BE SUPPORTED BY A 4" DIA. PIPE. THE FENCE SHALL BE SUPPORTED BY A 4" DIA. PIPE.
- SILT FENCES SHALL BE CONSTRUCTED WITH A 1.5" DIA. WOODEN FENCE POST WITH 10" DIA. HOLE. THE FENCE SHALL BE SUPPORTED BY A 4" DIA. PIPE. THE FENCE SHALL BE SUPPORTED BY A 4" DIA. PIPE.
- SILT FENCES SHALL BE CONSTRUCTED WITH A 1.5" DIA. WOODEN FENCE POST WITH 10" DIA. HOLE. THE FENCE SHALL BE SUPPORTED BY A 4" DIA. PIPE. THE FENCE SHALL BE SUPPORTED BY A 4" DIA. PIPE.
- SILT FENCES SHALL BE CONSTRUCTED WITH A 1.5" DIA. WOODEN FENCE POST WITH 10" DIA. HOLE. THE FENCE SHALL BE SUPPORTED BY A 4" DIA. PIPE. THE FENCE SHALL BE SUPPORTED BY A 4" DIA. PIPE.

SF-4 Urban Drainage and Flood Control District Urban Storm Drainage Criteria Manual Volume 3 November 2010

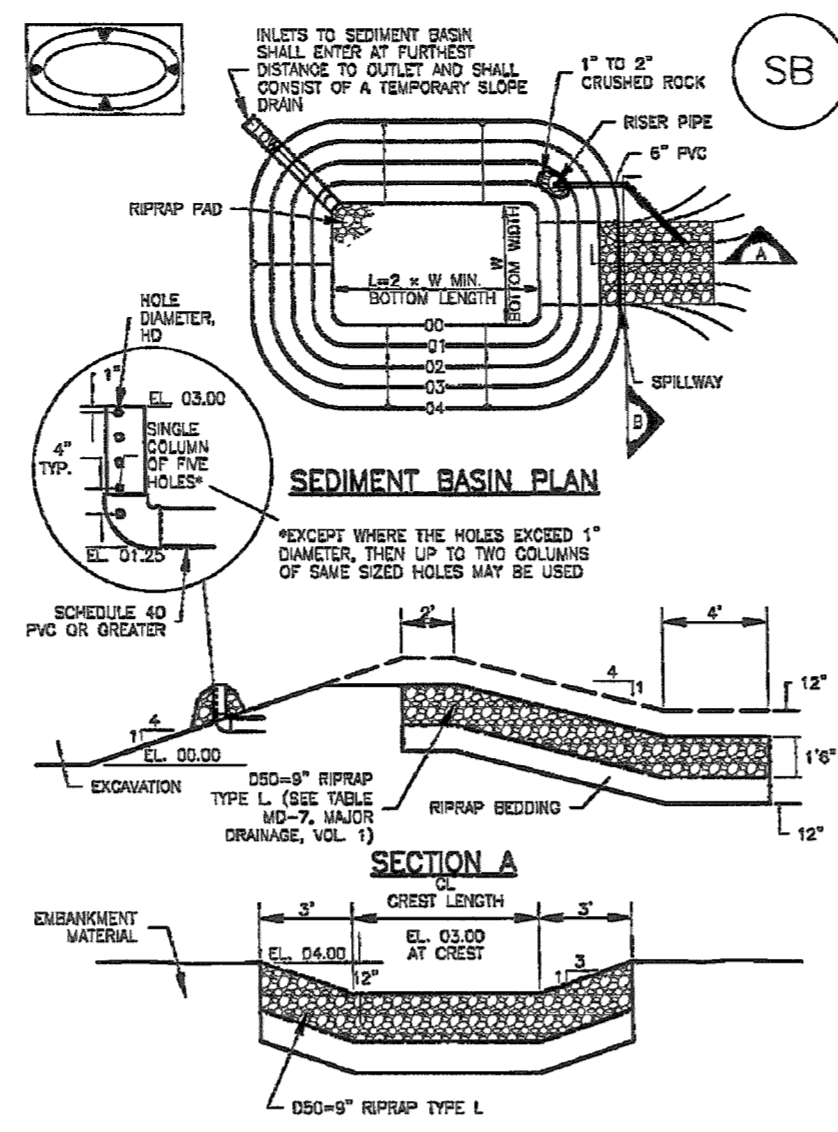
SC-3 Straw Bale Barrier (SBB)

STRAW BALE INSTALLATION NOTES

- SEE PLAN VIEW FOR LOCATION OF STRAW BALE.
- STRAW BALES SHALL BE CONSTRUCTED WITH FREE STRAW OR HAY. LOAD CAPACITY SHALL BE AS SHOWN ON PLAN.
- STRAW BALES SHALL BE CONSTRUCTED WITH FREE STRAW OR HAY. LOAD CAPACITY SHALL BE AS SHOWN ON PLAN.
- STRAW BALES SHALL BE CONSTRUCTED WITH FREE STRAW OR HAY. LOAD CAPACITY SHALL BE AS SHOWN ON PLAN.
- STRAW BALES SHALL BE CONSTRUCTED WITH FREE STRAW OR HAY. LOAD CAPACITY SHALL BE AS SHOWN ON PLAN.
- STRAW BALES SHALL BE CONSTRUCTED WITH FREE STRAW OR HAY. LOAD CAPACITY SHALL BE AS SHOWN ON PLAN.
- STRAW BALES SHALL BE CONSTRUCTED WITH FREE STRAW OR HAY. LOAD CAPACITY SHALL BE AS SHOWN ON PLAN.
- STRAW BALES SHALL BE CONSTRUCTED WITH FREE STRAW OR HAY. LOAD CAPACITY SHALL BE AS SHOWN ON PLAN.
- STRAW BALES SHALL BE CONSTRUCTED WITH FREE STRAW OR HAY. LOAD CAPACITY SHALL BE AS SHOWN ON PLAN.
- STRAW BALES SHALL BE CONSTRUCTED WITH FREE STRAW OR HAY. LOAD CAPACITY SHALL BE AS SHOWN ON PLAN.

SBB-2 Urban Drainage and Flood Control District Urban Storm Drainage Criteria Manual Volume 3 November 2010

Sediment Basin (SB) SC-7



SC-7 Urban Drainage and Flood Control District Urban Storm Drainage Criteria Manual Volume 3 November 2010

Sediment Basin (SB) SC-7

TABLE SB-1. SIZING INFORMATION FOR STANDARD SEDIMENT BASIN

Upper Basin Drainage Area (Acres)	Basin Bottom Width (ft)	Spillway Crest Length (ft)	Basin Depth (ft)
1	12.5	2	1.5
2	15.0	3	1.5
3	17.5	4	1.5
4	20.0	5	1.5
5	22.5	6	1.5
6	25.0	7	1.5
7	27.5	8	1.5
8	30.0	9	1.5
9	32.5	10	1.5
10	35.0	11	1.5
11	37.5	12	1.5
12	40.0	13	1.5
13	42.5	14	1.5
14	45.0	15	1.5
15	47.5	16	1.5
16	50.0	17	1.5
17	52.5	18	1.5
18	55.0	19	1.5
19	57.5	20	1.5
20	60.0	21	1.5
21	62.5	22	1.5
22	65.0	23	1.5
23	67.5	24	1.5
24	70.0	25	1.5
25	72.5	26	1.5

- SEE PLAN VIEW FOR LOCATION OF SEDIMENT BASIN.
- SEE PLAN VIEW FOR LOCATION OF SEDIMENT BASIN.
- SEE PLAN VIEW FOR LOCATION OF SEDIMENT BASIN.
- SEE PLAN VIEW FOR LOCATION OF SEDIMENT BASIN.
- SEE PLAN VIEW FOR LOCATION OF SEDIMENT BASIN.
- SEE PLAN VIEW FOR LOCATION OF SEDIMENT BASIN.
- SEE PLAN VIEW FOR LOCATION OF SEDIMENT BASIN.
- SEE PLAN VIEW FOR LOCATION OF SEDIMENT BASIN.
- SEE PLAN VIEW FOR LOCATION OF SEDIMENT BASIN.
- SEE PLAN VIEW FOR LOCATION OF SEDIMENT BASIN.

SC-7 Urban Drainage and Flood Control District Urban Storm Drainage Criteria Manual Volume 3 November 2010

Sediment Basin (SB) SC-7

- SEE PLAN VIEW FOR LOCATION OF SEDIMENT BASIN.
- SEE PLAN VIEW FOR LOCATION OF SEDIMENT BASIN.
- SEE PLAN VIEW FOR LOCATION OF SEDIMENT BASIN.
- SEE PLAN VIEW FOR LOCATION OF SEDIMENT BASIN.
- SEE PLAN VIEW FOR LOCATION OF SEDIMENT BASIN.
- SEE PLAN VIEW FOR LOCATION OF SEDIMENT BASIN.
- SEE PLAN VIEW FOR LOCATION OF SEDIMENT BASIN.
- SEE PLAN VIEW FOR LOCATION OF SEDIMENT BASIN.
- SEE PLAN VIEW FOR LOCATION OF SEDIMENT BASIN.
- SEE PLAN VIEW FOR LOCATION OF SEDIMENT BASIN.

SC-7 Urban Drainage and Flood Control District Urban Storm Drainage Criteria Manual Volume 3 November 2010

EROSION CONTROL CRITERIA:

- THE OMISSION FROM OR THE INCLUSION OF UTILITY LOCATIONS ON THE PLANS IS NOT TO BE CONSIDERED AS THE NON-EXISTENCE OF OR A DEFINITE LOCATION OF EXISTING UNDERGROUND UTILITIES.
- DURING GRADING OPERATIONS, LOCATE AND SET THE STRAW BALE CHECK DAMS AND SILT FENCES AS SHOWN ON THE EROSION CONTROL PLAN. AT THE TIME REESED ALL DISTURBED AREAS WITH AN EL PASO COUNTY APPROVED SEED MIX.
- SEEDING APPLICATION: DRILLED TO A DEPTH OF .25" TO .50" INTO SOIL WHERE POSSIBLE. BROADCAST AND RAKED TO COVER ON STEEPER THAN 3:1 SLOPES WHERE ACCESS IS LIMITED OR UNSAFE FOR EQUIPMENT.
- MULCHING REQUIREMENT AND APPLICATION: 1.5 TONS PER ACRE NATIVE HAY MECHANICALLY CRIMPED INTO SOIL.
- THE STRAW BALE CHECK DAMS AND SILT FENCES SHALL BE KEPT IN PLACE AND MAINTAINED UNTIL EROSION AND SEDIMENTATION POTENTIAL IS MITIGATED. REMOVAL OF SILT AND SEDIMENT COLLECTED BY THE STRAW BALES IS REQUIRED ONCE IT REACHES HALF THE HEIGHT OF THE STRAW BALES OR SILT FENCE.
- DISTURBED SOIL SHALL BE VEGETATED WITHIN 60 DAYS AFTER SUBSTANTIAL FINAL GRADING IS COMPLETE. TEMPORARY VEGETATION TO DISTURBED AREAS THAT WILL HAVE A PERIOD OF EXPOSURE OF 6 MONTHS OR LONGER PRIOR TO FINAL STABILIZATION.
- ALL FACILITIES, VEGETATION AND OTHER ITEMS REQUIRED BY THE APPROVED FINAL GRADING, EROSION CONTROL AND RECLAMATION PLAN SHALL BE PROPERLY MAINTAINED BY THE OWNERS OF THE PROPERTY. SUCH MAINTENANCE SHALL INCLUDE, BUT NOT BE LIMITED TO KEEPING ALL EROSION CONTROL FACILITIES IN GOOD ORDER AND FUNCTIONAL, REPAIRING ANY EROSION DAMAGE THAT OCCURS, KEEPING ALL VEGETATION HEALTHY AND IN GROWING CONDITION AND REPLACING ANY DEAD VEGETATION AS SOON AS PRACTICABLE.
- ALL SILT FENCES ARE TO BE REGULARLY INSPECTED AND REPAIRED AS NEEDED.
- THE CONTRACTOR SHALL PROVIDE VEHICLE TRACKING CONTROL FACILITIES FOR EACH ENTRANCE/EXIT TO THE SITE. THE CONTRACTOR SHALL SUBMIT A PLAN WHICH WILL ASSURE USAGE OF THIS FACILITY BY ALL VEHICLES LEAVING THE SITE.
- EROSION CONTROL MEASURES SHALL BE CHECKED AFTER EACH STORM EVENT AND REPAIRED WHEN NECESSARY.
- CONTRACTOR SHALL MAINTAIN ALL TEMPORARY EROSION CONTROL FACILITIES IN GOOD WORKING ORDER UNTIL SUCH TIME AS PERMANENT FACILITIES ARE IN PLACE AND THE CONSTRUCTION MANAGER HAS APPROVED THEIR REMOVAL.
- ADDITIONAL EROSION CONTROL STRUCTURES MAY BE REQUIRED AT THE TIME OF CONSTRUCTION.
- THE EROSION CONTROL MEASURES OUTLINED ON THE PLAN ARE THE RESPONSIBILITY OF THE DEVELOPER TO MONITOR AND REPLACE, REGRADE AND REBUILD AS NECESSARY UNTIL VEGETATION IS ESTABLISHED.
- MAXIMUM ACREAGE OPEN AT ANY GIVEN TIME IS TO BE 30 ACRES.

SEEDING GUIDELINES

- SEEDBED PREPARATION**
THE SEEDBED SHOULD BE WELL-SEDED AND FIRM, BUT FRAGILE ENOUGH THAT THE SEED CAN BE PLACED AT THE SEEDING DEPTH. COMPETITIVE STANION OF WEEDS THAT ARE PRESENT BEFORE SEEDING MUST BE CONTROLLED BY SHALLOW TILLAGE OR BY APPLICATION OF HERBICIDES. SOILS THAT HAVE BEEN OVER-COMPACTED BY TRAFFIC OR EQUIPMENT, ESPECIALLY WHEN THEY SHOULD BE BROKEN UP ROOTING-RESTRICTIVE LAYERS, THAN HARROWED, ROLLED, OR FILLED TO PREPARE THE REQUIRED FIRM SEEDBED.
- FERTILIZER**
FERTILIZER SHOULD BE APPLIED AT A RATE OF 80 POUNDS OF AVAILABLE NITROGEN PER ACRE AND 40 POUNDS OF AVAILABLE PHOSPHATE PER ACRE. THE TIME OF APPLICATION SHOULD BE IMMEDIATELY PRIOR TO SEEDING, AT THE TIME OF SEEDING, OR IMMEDIATELY FOLLOWING SEEDING, DEPENDING ON THE KIND OF FERTILIZER AND TYPE OF EQUIPMENT USED.
- SEEDING**
SEED SHOULD BE PLANTED WITH A GRASS DRILL ON ALL SLOPES OF 3:1 OR FLATTER. SEED MAY BE BROADCAST BY HAND, BY MECHANICAL SPREADER, OR BY HYDRAULIC EQUIPMENT ON AREAS THAT ARE SMALL, TOO STEEP, OR NOT ACCESSIBLE FOR SEED DRILL OPERATIONS. SEED PLANTED WITH A DRILL SHOULD BE COVERED WITH SOIL TO A DEPTH OF 1/4" TO 3/4" INCH. SEED PLANTED BY THE BROADCAST METHOD SHOULD BE INCORPORATED INTO THE SOIL SURFACE NOT TO EXCEED A DEPTH OF 3/4" INCH, BY RAKING, HARROWING, OR OTHER PROVEN METHOD. THE TIME OF SEEDING IS FROM OCTOBER 15TH - MAY 31ST - SEED PLANTED IN THE LATE FALL WILL REMAIN DORMANT UNTIL SPRING, WHEN IT WILL GERMINATE.
- MULCHING**
SEEDING AREAS SHOULD BE MULCHED TO CONSERVE MOISTURE, PREVENT SURFACE COMPACTION OR CRUSTING, REDUCE RUNOFF AND EROSION, CONTROL INSECTS, AND HELP ESTABLISH PLANT COVER. NATIVE HAY OR STRAW SHOULD BE APPLIED AT A RATE OF 4,000 POUNDS PER ACRE AND CRIMPED INTO THE GROUND, ON SLOPES GREATER THAN 3:1, AN AGROMONY BLANKET SHOULD BE USED.
- SUPPLEMENTAL WATER**
IN LOW RAINFALL AREAS, WHERE WATER IS AVAILABLE AND WHERE RAPID ESTABLISHMENT IS NEEDED, IRRIGATION OF NEW SEEDING SHOULD BE PERFORMED DURING THE FIRST GROWING SEASON. WATER SHOULD BE APPLIED AT APPROXIMATELY ONE WEEK INTERVALS, AT A RATE OF 3/4" TO 1" INCH PER APPLICATION, WHEN RAINFALL IS DEFICIENT FOR PLANT DEVELOPMENT.

RECOMMENDED EL PASO COUNTY GRASS SEED MIXES

GRASS	VARIETY	PLS lbs per acre
GRASS MIX FOR QUICK REVEGETATION - ALL SITES:		
CRESTED WHEAT GRASS	EPHRAIM OR HYCREST	4.0
PERENNIAL RYE	LINN	3.0
WESTERN WHEATGRASS	BARTON	3.0
SMOOTH BROME GRASS	LINCOLN OR MANCHAR	5.0
SIDEOTS GRAMA	EL RENO	2.5
		TOTAL: 16.5
GRASS MIX FOR HEAVIER SOIL AREAS:		
GRASS	VARIETY	PLS lbs per acre
CRESTED WHEAT GRASS	EPHRAIM	3.0
SLENDER WHEAT GRASS	SODAR	2.5
WESTERN WHEATGRASS	BARTON	3.0
SMOOTH BROME GRASS	LINCOLN OR MANCHAR	4.0
SIDEOTS GRAMA	EL RENO	3.0
		TOTAL: 17.5
GRASS MIX FOR SANDY SOILS:		
GRASS	VARIETY	PLS lbs per acre
SIDEOTS GRAMA	EL RENO	3.0
WESTERN WHEATGRASS	BARTON	2.5
SLENDER WHEAT GRASS	NATIVE	2.0
LITTLE BLUESTEM	PASTURA	2.0
SAND DROPSSEED	NATIVE	0.5
SWITCH GRASS	NEBRASKA 28	3.0
EROSION RESISTANT GRASS	MORPHA	1.0
OPTIONAL: PERENNIAL RYE		2.0
		TOTAL: 14-16

EL PASO COUNTY PROJECT NO. PPR-17-048

48 HOURS BEFORE YOU DIG, CALL UTILITY LOCATORS 811
UTILITY NOTIFICATION CENTER OF COLORADO
IT'S THE LAW

THE LOCATIONS OF EXISTING UNDERGROUND UTILITIES ARE SHOWN IN AN APPROXIMATE WAY ONLY. THE CONTRACTOR SHALL DETERMINE THE EXACT LOCATION OF ALL EXISTING UTILITIES BEFORE COMMENCING WORK. THE CONTRACTOR SHALL BE FULLY RESPONSIBLE FOR ANY AND ALL DAMAGES WHICH MIGHT BE CAUSED BY HIS FAILURE TO EXACTLY LOCATE AND PRESERVE ANY AND ALL UNDERGROUND UTILITIES.

NO.	REVISION	DATE

SCHEDULE OF ANTICIPATED CONSTRUCTION ACTIVITY:

BEGIN CONSTRUCTION UPON APPROVAL	ACTIVITY	COMPLETION	EROSION CONTROL ALL SHOWN ON GRADING PLAN
	ALL SITE GRADING AND UTILITY INSTALLATION	3 MONTHS	

REVIEW: PREPARED UNDER MY DIRECT SUPERVISION FOR AND ON BEHALF OF CLASSIC CONSULTING ENGINEERS AND SURVEYORS, LLC

KYLE R. CAMPBELL, COLORADO P.E. #29794

11.8.17 DATE

CLASSIC CONSULTING ENGINEERS & SURVEYORS

818 N. Cascade Avenue, Suite 200 Colorado Springs, Colorado 80903 (719)785-0780 (719)785-0799(Fax)

FALCON HIGH SCHOOL ADDITION
FALCON SCHOOL DISTRICT 49
CONSTRUCTION PLANS
DETAILS

DESIGNED BY	MAL	SCALE	DATE
			07/28/17

DRAWN BY	MES	(H) 1"= 20'	SHEET 4 OF 5

CHECKED BY	(V) 1"= N/A	JOB NO.	2366.92

