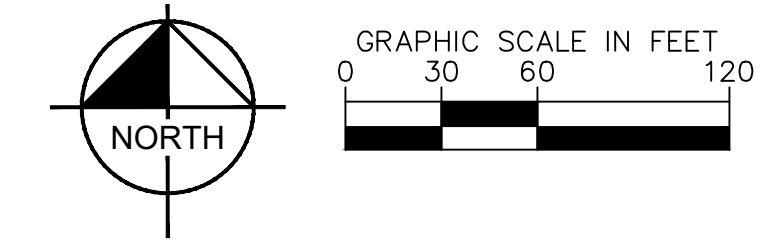


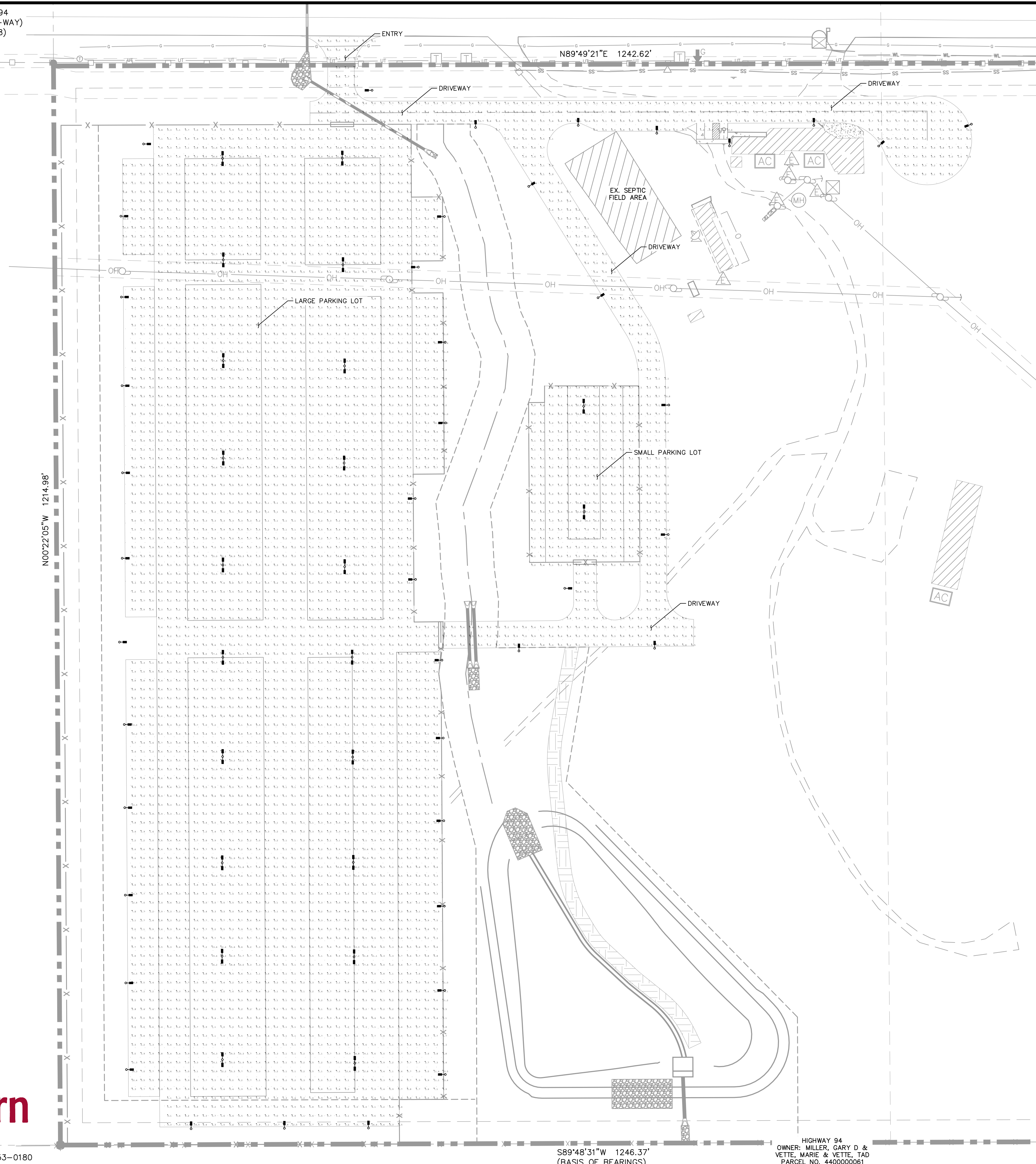
CO STATE HIGHWAY 94
(100' PUBLIC RIGHT-OF-WAY)
(REC. NO. 219151478)

12135 HIGHWAY 94
OWNER: FAIR DINKUM TRUST
PARCEL NO. 440000239

LIGHTING SUMMARY TABLE				
AREA	AVG. ILLUMINANCE (FC)	MAX (FC)	MIN (FC)	UNIFORMITY (AVG/MIN)
LARGE PARKING LOT	2.78	27.20	0.10	27.80
SMALL PARKING LOT	2.99	27.10	0.10	29.90
DRIVEWAYS/ENTRY	2.50	14.90	0.10	25.00
STANDARD	1.25			6.00



LEGEND
 PROPOSED LUMINAIRE



K:\CCS_Civil\19820003_UDON South\CADD\PlanSheets\SDP_EI.dwg Jun 20, 2024 2:58pm

Kimley»Horn

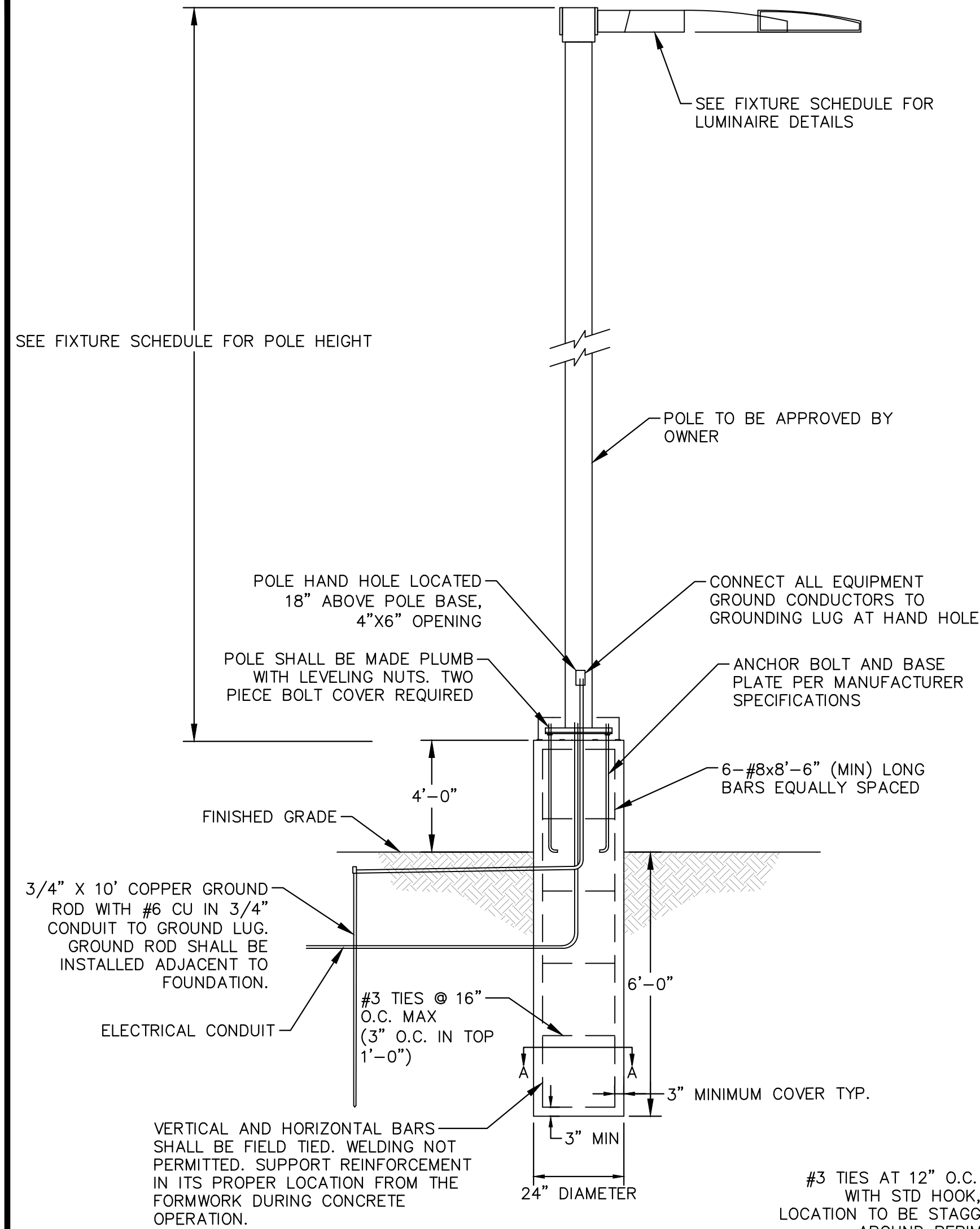
© 2024 KIMLEY-HORN AND ASSOCIATES, INC.
2 NORTH NEVADA AVENUE, SUITE 900
COLORADO SPRINGS, COLORADO 80903 (719) 453-0180

S89°48'31"W 1246.37'
(BASIS OF BEARINGS)

HIGHWAY 94
OWNER: MILLER, GARY D &
VETTE, MARIE & VETTE, TAD
PARCEL NO. 440000061

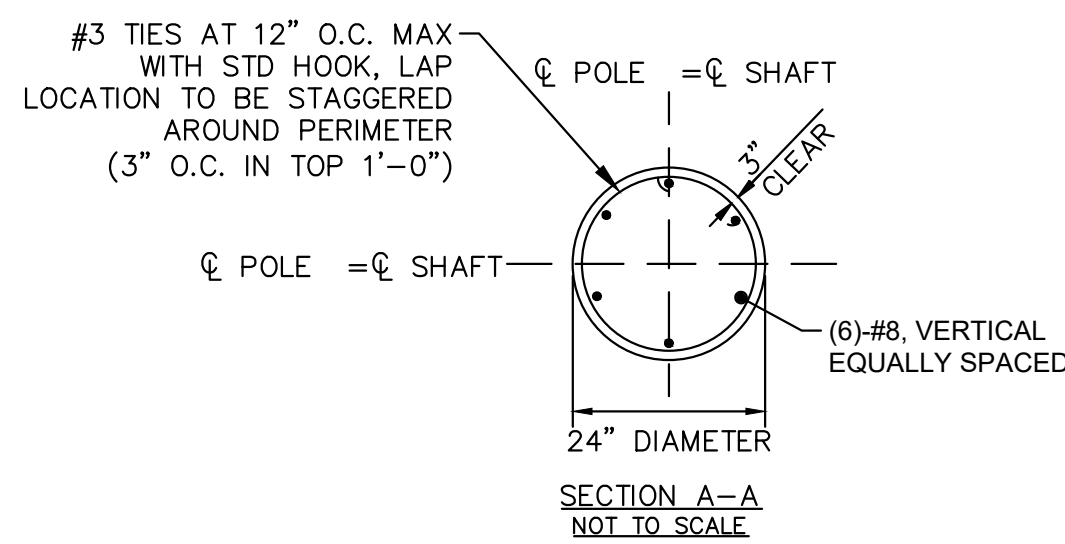
PHOTOMETRIC PLAN
SHEET 10 OF XX

UDON SOUTH - COUNTY PROJECT NO. SDP XX-XXXXX



- NOTES:**
- 4000 PSI MIN. 28 DAY COMPRESSIVE STRENGTH CONCRETE WITH GRADE 60 REINFORCING STEEL
 - IF WATER IS PRESENT IN HOLE, REMOVE BEFORE POURING CONCRETE.
 - FOUNDATION EXCAVATION SHALL BE BY 24" AUGER IN UNDISTURBED OR PROPERLY COMPACTED FILL PER SPECIFICATIONS.
 - FOUNDATION HAS BEEN DESIGNED FOR AN ALLOWABLE BEARING CAPACITY OF 1500 PSF.
 - FOUNDATION HAS BEEN DESIGNED FOR A MINIMUM ALLOWABLE LATERAL SOIL PRESSURE OF 100 PCF.

1 POLE FOUNDATION DETAIL
SCALE: NTS



91081AL 100/150/185 Watt Selectable Wattage & Color Temperature LED Area Light

Material: Aluminum construction with integrated fins to maximize heat dissipation.
 Color: Dark Bronze.
 Preset Power: 150 Watts
 Voltage: 120-277 Volt standard.
 Preset Color Temperature: 5000K
 Light Distribution: Type 3 standard.
 Type 4 and Type 5 options as special order.
 Photocell: Photocell is optional.
 Dimming: 0-10V Dimming Capable.
 Dimming control not provided (field install).
 ETL Listing: ETL Listed for Wet Locations.
 DLC Listing: DLC Premium.
 IP Rating: IP65
 EPA Rating: 0.55
 Warranty: 5 Years.
 Weight: 10 lbs.

POWER (W)	LOW	MID	HIGH
AMPS	0.87 @ 120V/0.38 @ 277V	1.31 @ 120V/0.57 @ 277V	1.62 @ 120V/0.70 @ 277V
COLOR TEMPERATURE (K)	3000 4000 5000	3000 4000 5000	3000 4000 5000
LUMENS	14,500 16,000 15,000	21,750 24,000 22,500	26,825 29,600 27,750
LUMENS/WATT	145 160 150	145 160 150	145 160 150

Disclaimer: All dimensions and specifications are subject to change without any notice.

Copyright © 2023 Energy Light, Inc. All Rights Reserved | 1881 Rose Road, Lake Zurich, IL 60047

2 LUMINAIRE CUTSHEET
SCALE: NTS

547103 14 Foot Square Steel Light Pole, 4 Inch Wide, 11 Gauge

Product Description:
 Pole Top Options: A removable pole cap is provided if the pole is drilled for attaching light fixtures. The drill pattern and drill orientation needs to be provided by the customer unless Energy Light fixtures are used for the project. If tenon option is selected, a steel tenon will be provided.
 Pole Shaft: 4 inch square 11 gauge.
 Pole shaft is weldable-grade, cold-rolled, commercial quality carbon steel tubing conforming to ASTM A500 Grade B. All welds conform to AWS D1.2 using ER70S-6 electrodes.
 Handhole: Reinforced, 3" X 5" size handhole is located at 18 inches from the base. Grounding lug incorporating a tapped 1/2"-13 NC hole is provided.
 Color: Commercial grade, super durable powder coat is the standard option.
 Dark bronze, white and black colors are provided at no extra charge. Other colors and custom colors options are available at a surcharge. Hot dip galvanizing is available with a surcharge and extended lead time. Powder coated, galvanized poles are also available as a premium option.
 Anchor Bolts: A set of 4 galvanized steel anchor bolts is provided with each pole assembly. Each anchor bolt includes 2 nuts and 2 washers. Top portion of the anchor bolt is threaded for securing and leveling the pole with the provided nuts and washers. An actual size paper anchor bolt template is provided.
 Bolt Circle: 8-1/2" (Bolt Circle Range 8"-9")
 Base Cover: Two-piece ABS plastic base cover is provided.
 Other Options: The following options are available:
 Vibration dampener, custom tenon sizes, custom colors, electric/GFI outlets, custom pole heights, additional handholes, UL compliant handholes and custom base plate dimensions.
 Warranty: 5 Years.
 Foundation design: Foundation should be designed by an engineer familiar with local soil and wind conditions as well as local code where the pole(s) will be installed.

MAXIMUM EPA (Square Feet)						Pole Weight (lbs)
90 mph	100 mph	110 mph	120 mph	130 mph	140 mph	
17.0	13.2	12.1	9.7	7.8	6.3	100

Disclaimer: All dimensions and specifications are subject to change without any notice.
 Energy Light, Inc. is not responsible for any claims arising from improper loading (what is attached to the light pole), improper use, incorrect foundation design and/or installation.

Copyright © 2021 Energy Light, Inc. All Rights Reserved | 1881 Rose Road, Lake Zurich, IL 60047

3 POLE CUTSHEET
SCALE: NTS

LUMINAIRE SCHEDULE

SYMBOL	DESCRIPTION	MANUFACTURER AND MODEL	VOLTAGE	WATTAGE	LUMENS	FINISH	POLE MANUFACTURER	POLE MODEL	POLE FINISH	MOUNTING HEIGHT
	SHORT ARM STYLE LUMINAIRE	ENERGY LIGHT INC POWER SELECTABLE LED AREA LIGHT CATALOG #91081AL	120-277V	100 - 185 W	14,500 - 27,750 LUMENS	DARK BROZE	ENERGY LIGHT INC	547103	DARK BRONZE	18'-0"
	SHORT ARM STYLE LUMINAIRE	ENERGY LIGHT INC POWER SELECTABLE LED AREA LIGHT CATALOG #91081AL	120-277V	200 - 370 W	29,000 - 55,500 LUMENS	DARK BROZE	ENERGY LIGHT INC	547103	DARK BRONZE	18'-0"