

THIS DOCUMENT AND ITS CONTENTS ARE THE WORK PRODUCT AND PROPERTY OF 51EC, INC., WHICH RETAINS ALL COMMON LAW, STATUTORY AND OTHER RESERVED RIGHTS, INCLUDING THE COPYRIGHT.

**SMITH PLUMBING & HEATING**  
PHOTOMETRICS  
1875 MAIN STREET  
COLORADO SPRINGS, CO 80911

| REV | DESCRIPTION | DRAWN | CHECK | APPR | DATE |
|-----|-------------|-------|-------|------|------|
|     |             |       |       |      |      |
|     |             |       |       |      |      |
|     |             |       |       |      |      |
|     |             |       |       |      |      |

ISSUANCE:  
**ISSUED FOR REVIEW**

CLIENT:  
HAMMERS CONSTRUCTION  
1411 WOOLSEY HEIGHTS  
COLORADO SPRINGS, CO 80915

ARCHITECT:  
HAMMERS CONSTRUCTION  
1411 WOOLSEY HEIGHTS  
COLORADO SPRINGS, CO 80915

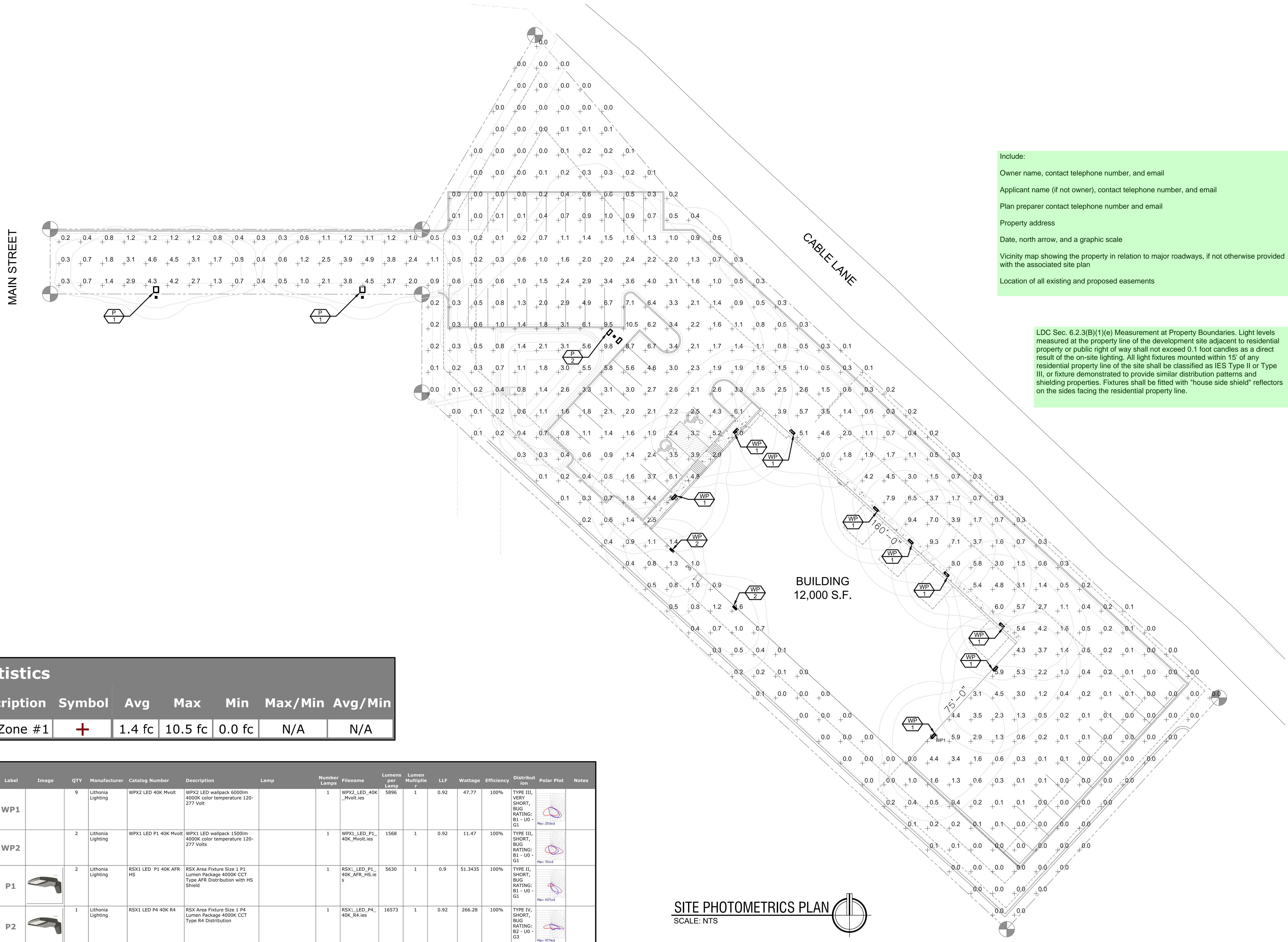
PROJECT NO:  
5151-21-01

TITLE:  
**SITE  
PHOTOMETRICS  
PLAN**

SHEET NO:  
**E-001**

Include:  
Owner name, contact telephone number, and email  
Applicant name (if not owner), contact telephone number, and email  
Plan preparer contact telephone number and email  
Property address  
Date, north arrow, and a graphic scale  
Vicinity map showing the property in relation to major roadways, if not otherwise provided with the associated site plan  
Location of all existing and proposed easements

LDC Sec. 6.2.3(B)(1)(e) Measurement at Property Boundaries. Light levels measured at the property line of the development site adjacent to residential property or public right of way shall not exceed 0.1 foot candles as a direct result of the on-site lighting. All light fixtures mounted within 15' of any residential property line of the site shall be classified as IES Type II or Type III, or fixture demonstrated to provide similar distribution patterns and shielding properties. Fixtures shall be fitted with "house side shield" reflectors on the sides facing the residential property line.



| Statistics   |        |        |         |        |         |         |
|--------------|--------|--------|---------|--------|---------|---------|
| Description  | Symbol | Avg    | Max     | Min    | Max/Min | Avg/Min |
| Calc Zone #1 | +      | 1.4 fc | 10.5 fc | 0.0 fc | N/A     | N/A     |

| Symbol | Label | Image | QTY | Manufacturer      | Catalog Number         | Description   | Lamp | Number Lamps | Filename                   | Lumens per Lamp | Lumen Multiplier | LLF  | Wattage | Efficiency | Distribution                                   | Polar Plot | Notes       |
|--------|-------|-------|-----|-------------------|------------------------|---|------|--------------|----------------------------|-----------------|------------------|------|---------|------------|--|------------|-------------|
| WP1    | WP1   |       | 9   | Lithonia Lighting | WPX2 LED 40K Mvolt     | WPX2 LED wallpack 6000lm 4000K color temperature 120-277 Volt                           |      | 1            | WPX2_LED_40K_Mvolt.ies     | 5896            | 1                | 0.92 | 47.77   | 100%       | TYPE III, VERY SHORT, BUG RATING: B1 - U0 - G1 |            | Max: 261cd  |
| WP2    | WP2   |       | 2   | Lithonia Lighting | WPX1 LED P1 40K Mvolt  | WPX1 LED wallpack 1500lm 4000K color temperature 120-277 Volts                          |      | 1            | WPX1_LED_P1_40K_Mvolt.ies  | 1568            | 1                | 0.92 | 11.47   | 100%       | TYPE III, SHORT, BUG RATING: B1 - U0 - G1      |            | Max: 701cd  |
| P1     | P1    |       | 2   | Lithonia Lighting | RSX1 LED P1 40K AFR HS | RSX Area Fixture Size 1 P1 Lumen Package 4000K CCT Type AFR Distribution with HS Shield |      | 1            | RSX1_LED_P1_40K_AFR_HS.ies | 5630            | 1                | 0.9  | 51.3435 | 100%       | TYPE II, SHORT, BUG RATING: B1 - U0 - G1       |            | Max: 4371cd |
| P2     | P2    |       | 1   | Lithonia Lighting | RSX1 LED P4 40K R4     | RSX Area Fixture Size 1 P4 Lumen Package 4000K CCT Type R4 Distribution                 |      | 1            | RSX1_LED_P4_40K_R4.ies     | 16573           | 1                | 0.92 | 266.28  | 100%       | TYPE IV, SHORT, BUG RATING: B2 - U0 - G3       |            | Max: 977cd  |

**SITE PHOTOMETRICS PLAN**  
SCALE: NTS



2960 NORTH ACADEMY BLVD, SUITE 101  
COLORADO SPRINGS, CO 80917  
FIFTYNEEC.COM | 719.368.7394

THIS DOCUMENT AND ITS CONTENTS ARE THE WORK PRODUCT AND PROPERTY OF 51EC, INC., WHICH RETAINS ALL COMMON LAW, STATUTORY AND OTHER RESERVED RIGHTS, INCLUDING THE COPYRIGHT.

SMITH PLUMBING & HEATING  
PHOTOMETRICS  
1875 MAIN STREET  
COLORADO SPRINGS, CO 80911

| REV | DESCRIPTION | DRAWN | CHECK | APPR | DATE |
|-----|-------------|-------|-------|------|------|
|     |             |       |       |      |      |
|     |             |       |       |      |      |
|     |             |       |       |      |      |
|     |             |       |       |      |      |
|     |             |       |       |      |      |
|     |             |       |       |      |      |
|     |             |       |       |      |      |
|     |             |       |       |      |      |
|     |             |       |       |      |      |
|     |             |       |       |      |      |

ISSUANCE:  
**ISSUED FOR REVIEW**

CLIENT:  
HAMMERS CONSTRUCTION  
1411 WOOLSEY HEIGHTS  
COLORADO SPRINGS, CO 80915

ARCHITECT:  
HAMMERS CONSTRUCTION  
1411 WOOLSEY HEIGHTS  
COLORADO SPRINGS, CO 80915

PROJECT NO:  
5151-21-01

TITLE:  
LIGHTING CUT SHEETS 1 OF 2

SHEET NO:  
E-002

### WPX LED Wall Packs

WPX2 LED 40K MVOLT  
WP1

#### Performance Data

| Luminaire   | Input Power (W) | 120V | 208V | 240V | 277V | 347V |
|-------------|-----------------|------|------|------|------|------|
| WPX1 LED P1 | 11W             | 0.09 | 0.05 | 0.05 | 0.04 | 0.03 |
| WPX1 LED P2 | 24W             | 0.20 | 0.12 | 0.10 | 0.09 | 0.07 |
| WPX2        | 47W             | 0.39 | 0.23 | 0.20 | 0.17 | 0.14 |
| WPX3        | 69W             | 0.58 | 0.33 | 0.29 | 0.25 | 0.20 |

#### Electrical Load

| Luminaire   | Input Power (W) | 120V | 208V | 240V | 277V | 347V |
|-------------|-----------------|------|------|------|------|------|
| WPX1 LED P1 | 11W             | 0.09 | 0.05 | 0.05 | 0.04 | 0.03 |
| WPX1 LED P2 | 24W             | 0.20 | 0.12 | 0.10 | 0.09 | 0.07 |
| WPX2        | 47W             | 0.39 | 0.23 | 0.20 | 0.17 | 0.14 |
| WPX3        | 69W             | 0.58 | 0.33 | 0.29 | 0.25 | 0.20 |

#### Lumen Output

| Luminaire   | Color Temperature | Lumens Output |
|-------------|-------------------|---------------|
| WPX1 LED P1 | 3000K             | 1,537         |
|             | 4000K             | 1,668         |
|             | 5000K             | 1,602         |
| WPX1 LED P2 | 3000K             | 2,748         |
|             | 4000K             | 2,912         |
|             | 5000K             | 2,954         |
| WPX2        | 3000K             | 5,719         |
|             | 4000K             | 5,896         |
|             | 5000K             | 6,201         |
| WPX3        | 3000K             | 8,984         |
|             | 4000K             | 9,269         |
|             | 5000K             | 9,393         |

#### Lumen Ambient Temperature (LAT) Multipliers

Use these factors to determine relative lumen output for average ambient temperatures from 0-50°C (32-122°F).

| Ambient | Ambient | Lumens Multiplier |
|---------|---------|-------------------|
| 0°C     | 32°F    | 1.05              |
| 5°C     | 41°F    | 1.04              |
| 10°C    | 50°F    | 1.03              |
| 15°C    | 59°F    | 1.02              |
| 20°C    | 68°F    | 1.01              |
| 25°C    | 77°F    | 1.00              |
| 30°C    | 86°F    | 0.99              |
| 35°C    | 95°F    | 0.98              |
| 40°C    | 104°F   | 0.97              |

#### Projected LED Lumen Maintenance

Data references the extrapolated performance projections in a 25°C ambient, based on 6,000 hours of LED testing (tested per IESNA LM-80-08 and projected per IESNA TM-21-11). To calculate LMF, use the lumen maintenance factor that corresponds to the desired number of operating hours below. For other lumen maintenance values, contact factory.

| Operating Hours          | 50,000 | 75,000 | 100,000 |
|--------------------------|--------|--------|---------|
| Lumen Maintenance Factor | >0.94  | >0.92  | >0.90   |

#### HID Replacement Guide

| Luminaire   | Equivalent HID Lamp | WPK Input Power |
|-------------|---------------------|-----------------|
| WPX1 LED P1 | 100W                | 11W             |
| WPX1 LED P2 | 150W                | 24W             |
| WPX2        | 250W                | 47W             |
| WPX3        | 400W                | 69W             |

#### Emergency Egress Battery Packs

The emergency battery backup is integral to the luminaire — no external housing or back box is required. The emergency battery will power the luminaire for a minimum duration of 90 minutes and deliver minimum initial output of 550 lumens. Both battery pack options are CEC compliant.

| Battery Type | Minimum Temperature Setting | Power (Watts) | Control Option | Ordering Example               |
|--------------|-----------------------------|---------------|----------------|--------------------------------|
| Standard     | 0°C                         | 4W            | E4WH           | WPX2 LED 40K MVOLT E4WH C08B0  |
| Cold Weather | -20°C                       | 14W           | E14WC          | WPX2 LED 40K MVOLT E14WC C08B0 |

#### Photometric Diagrams

To see complete photometric reports or download .ies files for this product, visit the Lithonia Lighting WPX LED homepage. Tested in accordance with IESNA LM-79 and LM-80 standards.

One Lithonia Way • Conyers, Georgia 30012 • Phone: 1-800-705-SERV (7378) • www.lithonia.com  
© 2020 Acuity Brands Lighting, Inc. All rights reserved.  
WPX LED Rev. 09/29/20

### WPX LED Wall Packs

WPX2 LED 40K MVOLT  
WP1

#### Specifications

| Luminaire | Height (H)   | Width (W)     | Depth (D)    | Stile Conduit Location | Weight      |
|-----------|--------------|---------------|--------------|------------------------|-------------|
| WPX1      | 8.1"(20.6cm) | 11.1"(28.3cm) | 3.2"(8.1cm)  | 4.0"(10.3cm)           | 8.6"(1.6cm) |
| WPX2      | 9.1"(23.1cm) | 13.3"(33.8cm) | 4.1"(10.5cm) | 4.5"(11.5cm)           | 8.2"(1.7cm) |
| WPX3      | 9.5"(24.1cm) | 13.8"(35.0cm) | 5.5"(13.7cm) | 4.7"(12.0cm)           | 8.7"(1.7cm) |

#### Ordering Information

EXAMPLE: WPX2 LED 40K MVOLT DBBKD

| Series      | Color Temperature | Voltage               | Options  | Finish            |
|-------------|-------------------|-----------------------|--|-------------------|
| WPX1 LED P1 | 30K 3000K         | MVOLT 120V - 277V     | (blank) None   | DBBKD Dark Bronze |
| WPX1 LED P2 | 40K 4000K         | 347 347V <sup>1</sup> | E4WH Emergency battery backup, CEC compliant (4W, 8°C min) <sup>2</sup>    | DBBKD White       |
| WPX2 LED    | 50K 5000K         |                       | DRBLD Black  | DRBLD Black       |
| WPX3 LED    |                   |                       | E14WC Emergency battery backup, CEC compliant (14W, 20°C min) <sup>2</sup> | DRBLD Black       |
|             |                   |                       | PE Photocell <sup>3</sup>  | PE Photocell      |

Note: The lumen output and input power shown in the ordering tree are average representations of all configuration options. Specific values are available on request.

#### INTENDED USE

The WPX LED wall packs are designed to provide a cost-effective, energy-efficient solution for the one-for-one replacement of existing HID wall packs. The WPX1, WPX2 and WPX3 are ideal for replacing up to 150W, 250W, and 400W HID luminaires respectively. WPX luminaires deliver a uniform, wide distribution.

#### CONSTRUCTION

WPX features a die-cast aluminum main body with optimal thermal management that also enhances LED efficiency and extends component life. The luminaires are IP66 rated and sealed against moisture or environmental contaminants.

#### ELECTRICAL

Light engine configurations consist of high-efficiency LED and LED lumen maintenance of 100/100,000 hours. Color temperature (CCT) options of 3000K, 4000K, and 5000K with minimum CRI of 90. Electronic drivers require system power factor >0.95 and THD <20%. All luminaires have 6kV surge protection. Note: WPX LED P1 package comes with a standard surge protection rating of 2.5kV. It can be ordered with an optional 6kV surge protection.  
All photometric (PE) options on MVOLT (120V - 277V) input.

Note: The standard WPX LED wall pack luminaires come with field-adjustable drive current feature. This feature allows tuning the output current of the LED drivers to adjust the lumen output (to dim the luminaire).

#### NOTES

- All WPX wall packs come with 6kV surge protection standard, except WPX1 LED P1 package which comes with 2.5kV surge protection standard. Add SP60kV option to get WPX1 LED P1 with 6kV surge protection.
- Battery pack options only available on WPX1 and WPX2.
- Battery pack options not available with 347V and PE options.

#### FEATURES & SPECIFICATIONS

#### INSTALLATION

WPX can be mounted directly over a standard electrical junction box. Three 1/2 inch conduit ports on three sides allow for surface conduit wiring. A port on the back surface allows cable-through conduit wiring on surfaces that don't have an electrical junction box. Wiring can be made in the integral wiring compartment in all cases. WPX is only recommended for installations with LEDs facing downwards.

#### LISTINGS

CSA Certified to meet U.S. and Canadian standards. Suitable for wet locations. IP66 Rated. DesignLights Consortium (DLC) qualified product. Not all versions of this product may be DLC qualified. Please check the DLC Qualified Products List at [www.designlights.org](http://www.designlights.org), to confirm which versions are qualified. International Dark Sky Association (IDA) Future Seal of Approval (FSA) is available for all products on this page utilizing 3000K color temperature only.

#### WARRANTY

5-year limited warranty. Complete warranty terms located at: [www.lithonia.com/Support/Service/Service\\_Center/Service\\_Center.aspx](http://www.lithonia.com/Support/Service/Service_Center/Service_Center.aspx)  
Note: Actual performance may differ as a result of end-use environment and application. All values are design or typical values, measured under laboratory conditions at 25°C. Specifications subject to change without notice.

One Lithonia Way • Conyers, Georgia 30012 • Phone: 1-800-705-SERV (7378) • www.lithonia.com  
© 2020 Acuity Brands Lighting, Inc. All rights reserved.  
WPX LED Rev. 09/29/20

### WPX LED Wall Packs

WPX1 LED P1 40K MVOLT  
WP2

#### Specifications

| Luminaire | Height (H)   | Width (W)     | Depth (D)    | Stile Conduit Location | Weight      |
|-----------|--------------|---------------|--------------|------------------------|-------------|
| WPX1      | 8.1"(20.6cm) | 11.1"(28.3cm) | 3.2"(8.1cm)  | 4.0"(10.3cm)           | 8.6"(1.6cm) |
| WPX2      | 9.1"(23.1cm) | 13.3"(33.8cm) | 4.1"(10.5cm) | 4.5"(11.5cm)           | 8.2"(1.7cm) |
| WPX3      | 9.5"(24.1cm) | 13.8"(35.0cm) | 5.5"(13.7cm) | 4.7"(12.0cm)           | 8.7"(1.7cm) |

#### Ordering Information

EXAMPLE: WPX2 LED 40K MVOLT DBBKD

| Series      | Color Temperature | Voltage               | Options  | Finish            |
|-------------|-------------------|-----------------------|--|-------------------|
| WPX1 LED P1 | 30K 3000K         | MVOLT 120V - 277V     | (blank) None   | DBBKD Dark Bronze |
| WPX1 LED P2 | 40K 4000K         | 347 347V <sup>1</sup> | E4WH Emergency battery backup, CEC compliant (4W, 8°C min) <sup>2</sup>    | DBBKD White       |
| WPX2 LED    | 50K 5000K         |                       | DRBLD Black  | DRBLD Black       |
| WPX3 LED    |                   |                       | E14WC Emergency battery backup, CEC compliant (14W, 20°C min) <sup>2</sup> | DRBLD Black       |
|             |                   |                       | PE Photocell <sup>3</sup>  | PE Photocell      |

Note: The lumen output and input power shown in the ordering tree are average representations of all configuration options. Specific values are available on request.

#### INTENDED USE

The WPX LED wall packs are designed to provide a cost-effective, energy-efficient solution for the one-for-one replacement of existing HID wall packs. The WPX1, WPX2 and WPX3 are ideal for replacing up to 150W, 250W, and 400W HID luminaires respectively. WPX luminaires deliver a uniform, wide distribution.

#### CONSTRUCTION

WPX features a die-cast aluminum main body with optimal thermal management that also enhances LED efficiency and extends component life. The luminaires are IP66 rated and sealed against moisture or environmental contaminants.

#### ELECTRICAL

Light engine configurations consist of high-efficiency LED and LED lumen maintenance of 100/100,000 hours. Color temperature (CCT) options of 3000K, 4000K, and 5000K with minimum CRI of 90. Electronic drivers require system power factor >0.95 and THD <20%. All luminaires have 6kV surge protection. Note: WPX LED P1 package comes with a standard surge protection rating of 2.5kV. It can be ordered with an optional 6kV surge protection.  
All photometric (PE) options on MVOLT (120V - 277V) input.

Note: The standard WPX LED wall pack luminaires come with field-adjustable drive current feature. This feature allows tuning the output current of the LED drivers to adjust the lumen output (to dim the luminaire).

#### NOTES

- All WPX wall packs come with 6kV surge protection standard, except WPX1 LED P1 package which comes with 2.5kV surge protection standard. Add SP60kV option to get WPX1 LED P1 with 6kV surge protection.
- Battery pack options only available on WPX1 and WPX2.
- Battery pack options not available with 347V and PE options.

#### FEATURES & SPECIFICATIONS

#### INSTALLATION

WPX can be mounted directly over a standard electrical junction box. Three 1/2 inch conduit ports on three sides allow for surface conduit wiring. A port on the back surface allows cable-through conduit wiring on surfaces that don't have an electrical junction box. Wiring can be made in the integral wiring compartment in all cases. WPX is only recommended for installations with LEDs facing downwards.

#### LISTINGS

CSA Certified to meet U.S. and Canadian standards. Suitable for wet locations. IP66 Rated. DesignLights Consortium (DLC) qualified product. Not all versions of this product may be DLC qualified. Please check the DLC Qualified Products List at [www.designlights.org](http://www.designlights.org), to confirm which versions are qualified. International Dark Sky Association (IDA) Future Seal of Approval (FSA) is available for all products on this page utilizing 3000K color temperature only.

#### WARRANTY

5-year limited warranty. Complete warranty terms located at: [www.lithonia.com/Support/Service/Service\\_Center/Service\\_Center.aspx](http://www.lithonia.com/Support/Service/Service_Center/Service_Center.aspx)  
Note: Actual performance may differ as a result of end-use environment and application. All values are design or typical values, measured under laboratory conditions at 25°C. Specifications subject to change without notice.

One Lithonia Way • Conyers, Georgia 30012 • Phone: 1-800-705-SERV (7378) • www.lithonia.com  
© 2020 Acuity Brands Lighting, Inc. All rights reserved.  
WPX LED Rev. 09/29/20

### WPX LED Wall Packs

WPX1 LED P1 40K MVOLT  
WP2

#### Performance Data

| Luminaire   | Input Power (W) | 120V | 208V | 240V | 277V | 347V |
|-------------|-----------------|------|------|------|------|------|
| WPX1 LED P1 | 11W             | 0.09 | 0.05 | 0.05 | 0.04 | 0.03 |
| WPX1 LED P2 | 24W             | 0.20 | 0.12 | 0.10 | 0.09 | 0.07 |
| WPX2        | 47W             | 0.39 | 0.23 | 0.20 | 0.17 | 0.14 |
| WPX3        | 69W             | 0.58 | 0.33 | 0.29 | 0.25 | 0.20 |

#### Electrical Load

| Luminaire   | Input Power (W) | 120V | 208V | 240V | 277V | 347V |
|-------------|-----------------|------|------|------|------|------|
| WPX1 LED P1 | 11W             | 0.09 | 0.05 | 0.05 | 0.04 | 0.03 |
| WPX1 LED P2 | 24W             | 0.20 | 0.12 | 0.10 | 0.09 | 0.07 |
| WPX2        | 47W             | 0.39 | 0.23 | 0.20 | 0.17 | 0.14 |
| WPX3        | 69W             | 0.58 | 0.33 | 0.29 | 0.25 | 0.20 |

#### Lumen Output

| Luminaire   | Color Temperature | Lumens Output |
|-------------|-------------------|---------------|
| WPX1 LED P1 | 3000K             | 1,537         |
|             | 4000K             | 1,668         |
|             | 5000K             | 1,602         |
| WPX1 LED P2 | 3000K             | 2,748         |
|             | 4000K             | 2,912         |
|             | 5000K             | 2,954         |
| WPX2        | 3000K             | 5,719         |
|             | 4000K             | 5,896         |
|             | 5000K             | 6,201         |
| WPX3        | 3000K             | 8,984         |
|             | 4000K             | 9,269         |
|             | 5000K             | 9,393         |

#### Lumen Ambient Temperature (LAT) Multipliers

Use these factors to determine relative lumen output for average ambient temperatures from 0-50°C (32-122°F).

| Ambient | Ambient | Lumens Multiplier |
|---------|---------|-------------------|
| 0°C     | 32°F    | 1.05              |
| 5°C     | 41°F    | 1.04              |
| 10°C    | 50°F    | 1.03              |
| 15°C    | 59°F    | 1.02              |
| 20°C    | 68°F    | 1.01              |
| 25°C    | 77°F    | 1.00              |
| 30°C    | 86°F    | 0.99              |
| 35°C    | 95°F    | 0.98              |
| 40°C    | 104°F   | 0.97              |

#### Projected LED Lumen Maintenance

Data references the extrapolated performance projections in a 25°C ambient, based on 6,000 hours of LED testing (tested per IESNA LM-80-08 and projected per IESNA TM-21-11). To calculate LMF, use the lumen maintenance factor that corresponds to the desired number of operating hours below. For other lumen maintenance values, contact factory.

| Operating Hours          | 50,000 | 75,000 | 100,000 |
|--------------------------|--------|--------|---------|
| Lumen Maintenance Factor | >0.94  | >0.92  | >0.90   |

#### HID Replacement Guide

| Luminaire   | Equivalent HID Lamp | WPK Input Power |
|-------------|---------------------|-----------------|
| WPX1 LED P1 | 100W                | 11W             |
| WPX1 LED P2 | 150W                | 24W             |
| WPX2        | 250W                | 47W             |
| WPX3        | 400W                | 69W             |

#### Emergency Egress Battery Packs

The emergency battery backup is integral to the luminaire — no external housing or back box is required. The emergency battery will power the luminaire for a minimum duration of 90 minutes and deliver minimum initial output of 550 lumens. Both battery pack options are CEC compliant.

| Battery Type | Minimum Temperature Setting | Power (Watts) | Control Option | Ordering Example               |
|--------------|-----------------------------|---------------|----------------|--------------------------------|
| Standard     | 0°C                         | 4W            | E4WH           | WPX2 LED 40K MVOLT E4WH C08B0  |
| Cold Weather | -20°C                       | 14W           | E14WC          | WPX2 LED 40K MVOLT E14WC C08B0 |

#### Photometric Diagrams

To see complete photometric reports or download .ies files for this product, visit the Lithonia Lighting WPX LED homepage. Tested in accordance with IESNA LM-79 and LM-80 standards.

One Lithonia Way • Conyers, Georgia 30012 • Phone: 1-800-705-SERV (7378) • www.lithonia.com  
© 2020 Acuity Brands Lighting, Inc. All rights reserved.  
WPX LED Rev. 09/29/20



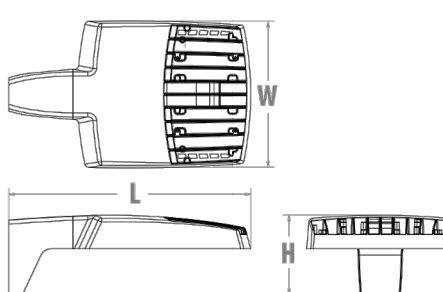
### RSX1 LED Area Luminaire

Category: RSX1 LED P1 40K AFR HS



#### Specifications

EPA (ft²/ft³): 0.57 ft² (0.05 m³)
Length: 21.8" (55.4 cm) (SPA mount)
Width: 13.3" (33.8 cm)
Height: 3.0" (7.6 cm) Main Body, 7.2" (18.4 cm) Arm
Weight: 22.0 lbs (10.0 kg) (SPA mount)



Introduction: The new RSX LED Area family delivers maximum value by providing significant energy savings, long life and outstanding photometric performance at an affordable price. The RSX1 delivers 7,000 to 17,000 lumens allowing it to replace 70W to 400W HID luminaires. The RSX features an integral universal mounting mechanism that allows the luminaire to be mounted on most existing drill hole patterns. This "no-drill" solution provides significant labor savings. An easy-access door on the bottom of mounting arm allows for wiring without opening the electrical compartment. A mast arm adaptor, adjustable integral slipfitter and other mounting configurations are available.

#### Ordering Information

EXAMPLE: RSX1 LED P4 40K R3 MVOLT SPA DDBXD

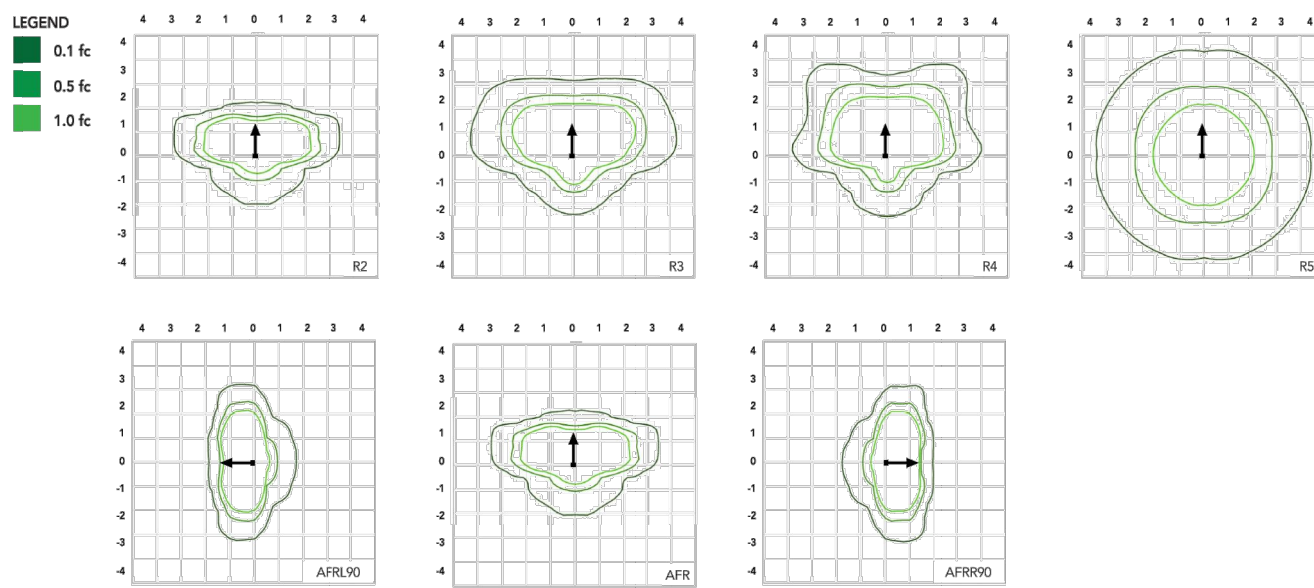
Table with columns: Series, Performance Package, Color Temperature, Distribution, Voltage, Mounting. Lists various configurations like RSX1 LED P1, P2, P3, P4 with their respective specifications.

Systems table with columns: Shipped Installed, Shipped Separately, and Finish. Lists accessories like photocell, sensors, and mounting options.

LITHONIA LIGHTING logo and contact information: One Lithonia Way • Conyers, Georgia 30012 • Phone: 1-800-705-SERV (7378) • www.acuitybrands.com

#### Photometric Diagrams

To see complete photometric reports or download .ies files for this product, visit Lithonia Lighting's RSX Area homepage.



#### Performance Data

Lumen Ambient Temperature (LAT) Multipliers

Table showing Lumen Ambient Temperature (LAT) Multipliers for various temperatures from 0°C to 50°C.

Electrical Load

Table showing Electrical Load for different system wattages (120W, 200W, 240W, 277V, 307V, 480V).

Projected LED Lumen Maintenance

Table showing Projected LED Lumen Maintenance for different operating hours (50,000, 75,000, 100,000).

LITHONIA LIGHTING logo and contact information: One Lithonia Way • Conyers, Georgia 30012 • Phone: 1-800-705-SERV (7378) • www.acuitybrands.com

#### Performance Data

Lumen Output

Lumen values are from photometric tests performed in accordance with IESNA LM-79-08. Data is considered to be representative of the configurations shown, within the tolerances allowed by Lighting Facts. Contact factory for performance data on any configurations not shown here.

Large table showing Performance Data with columns for Performance Package, System Watt, and various luminaire configurations (F1, F2, F3, F4) across different mounting heights (5TW, 12TW, 109W, 123W).

LITHONIA LIGHTING logo and contact information: One Lithonia Way • Conyers, Georgia 30012 • Phone: 1-800-705-SERV (7378) • www.acuitybrands.com



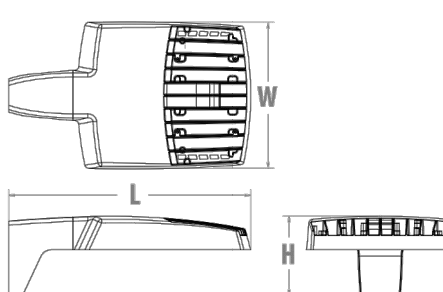
### RSX1 LED Area Luminaire

Category: RSX1 LED P4 40K R4



#### Specifications

EPA (ft²/ft³): 0.57 ft² (0.05 m³)
Length: 21.8" (55.4 cm) (SPA mount)
Width: 13.3" (33.8 cm)
Height: 3.0" (7.6 cm) Main Body, 7.2" (18.4 cm) Arm
Weight: 22.0 lbs (10.0 kg) (SPA mount)



Introduction: The new RSX LED Area family delivers maximum value by providing significant energy savings, long life and outstanding photometric performance at an affordable price. The RSX1 delivers 7,000 to 17,000 lumens allowing it to replace 70W to 400W HID luminaires. The RSX features an integral universal mounting mechanism that allows the luminaire to be mounted on most existing drill hole patterns. This "no-drill" solution provides significant labor savings. An easy-access door on the bottom of mounting arm allows for wiring without opening the electrical compartment. A mast arm adaptor, adjustable integral slipfitter and other mounting configurations are available.

#### Ordering Information

EXAMPLE: RSX1 LED P4 40K R3 MVOLT SPA DDBXD

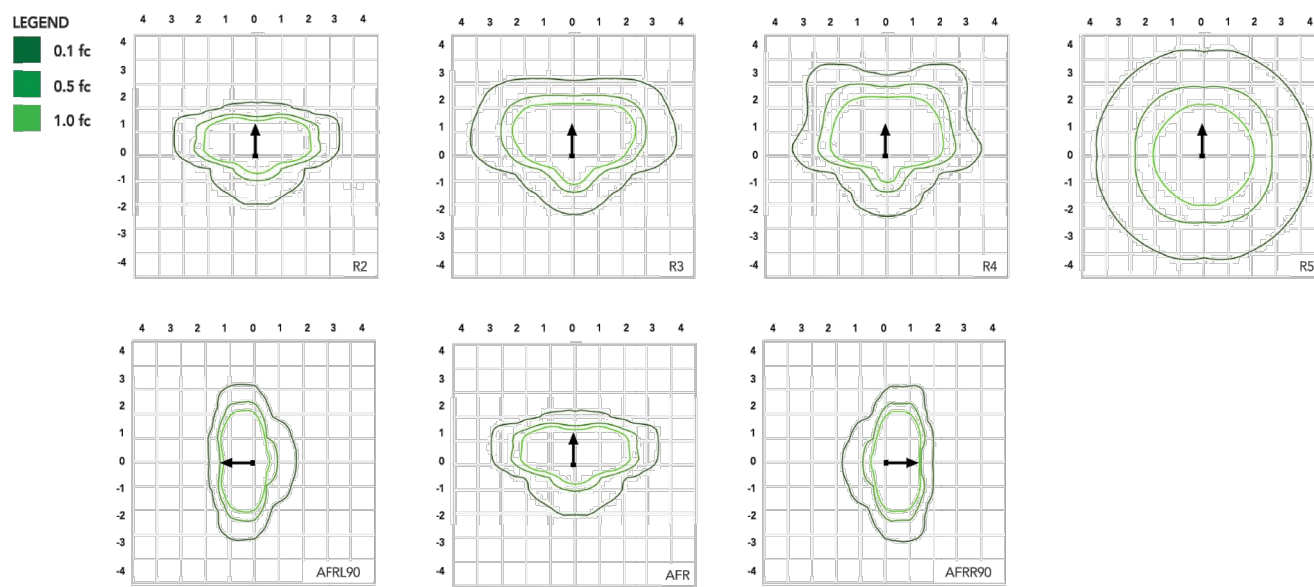
Table with columns: Series, Performance Package, Color Temperature, Distribution, Voltage, Mounting. Lists various configurations like RSX1 LED P1, P2, P3, P4 with their respective specifications.

Systems table with columns: Shipped Installed, Shipped Separately, and Finish. Lists accessories like photocell, sensors, and mounting options.

LITHONIA LIGHTING logo and contact information: One Lithonia Way • Conyers, Georgia 30012 • Phone: 1-800-705-SERV (7378) • www.acuitybrands.com

#### Photometric Diagrams

To see complete photometric reports or download .ies files for this product, visit Lithonia Lighting's RSX Area homepage.



#### Performance Data

Lumen Ambient Temperature (LAT) Multipliers

Table showing Lumen Ambient Temperature (LAT) Multipliers for various temperatures from 0°C to 50°C.

Electrical Load

Table showing Electrical Load for different system wattages (120W, 200W, 240W, 277V, 307V, 480V).

Projected LED Lumen Maintenance

Table showing Projected LED Lumen Maintenance for different operating hours (50,000, 75,000, 100,000).

LITHONIA LIGHTING logo and contact information: One Lithonia Way • Conyers, Georgia 30012 • Phone: 1-800-705-SERV (7378) • www.acuitybrands.com

#### Performance Data

Lumen Output

Lumen values are from photometric tests performed in accordance with IESNA LM-79-08. Data is considered to be representative of the configurations shown, within the tolerances allowed by Lighting Facts. Contact factory for performance data on any configurations not shown here.

Large table showing Performance Data with columns for Performance Package, System Watt, and various luminaire configurations (F1, F2, F3, F4) across different mounting heights (5TW, 12TW, 109W, 123W).

LITHONIA LIGHTING logo and contact information: One Lithonia Way • Conyers, Georgia 30012 • Phone: 1-800-705-SERV (7378) • www.acuitybrands.com



THIS DOCUMENT AND ITS CONTENTS ARE THE WORK PRODUCT AND PROPERTY OF 51EC, INC., WHICH RETAINS ALL COMMON LAW, STATUTORY AND OTHER RESERVED RIGHTS, INCLUDING THE COPYRIGHT.

SMITH PLUMBING & HEATING PHOTOMETRICS 1875 MAIN STREET COLORADO SPRINGS, CO 80911

Table with columns: REV, DESCRIPTION, DRAWN, CHECK, APPR, DATE. Contains revision history information.

ISSUANCE: ISSUED FOR REVIEW

CLIENT: HAMMERS CONSTRUCTION 1411 WOOLSEY HEIGHTS COLORADO SPRINGS, CO 80915

ARCHITECT: HAMMERS CONSTRUCTION 1411 WOOLSEY HEIGHTS COLORADO SPRINGS, CO 80915

PROJECT NO: 5151-21-01

TITLE: LIGHTING CUT SHEETS 2 OF 2

SHEET NO: E-003