

PIKES PEAK CHRISTIAN CHURCH
 4955 BRADLEY ROAD
 PARCEL NO: 65013-18-001
 ZONE: A-5 CAD-O
 USE: RELIGIOUS WORSHIP

IRRIGATION SYSTEM DESCRIPTION NOTE
 AN UNDERGROUND IRRIGATION SYSTEM WITH SURFACE DRIP COMPONENTS WILL BE USED TO IRRIGATE ALL PLANT MATERIAL AS REQUIRED PER PLAN. IRRIGATION SYSTEM TO BE DESIGN/BUILD. AS-BUILT PLAN SHALL BE PROVIDED TO OWNER ONCE INSTALLATION IS COMPLETE AND APPROVED.

LAYOUT NOTE
 CONTRACTOR IS RESPONSIBLE FOR INSTALLING ALL LANDSCAPE SHOWN ON THIS PLAN. ANY DEVIATIONS FROM THIS PLAN ARE TO BE APPROVED BY OWNER'S REPRESENTATIVE OR LANDSCAPE ARCHITECT. DEVIATIONS FROM THE APPROVED PLAN MAY REQUIRE APPROVAL BY EL PASO COUNTY AND OWNER REPRESENTATIVE.

PLANT SCHEDULE

Symbol	Abbr.	Quantity	Botanical Name	Common Name	Mature Width/Hght	Size
EVERGREEN TREES:						
	PE	16	<i>Pinus edulis</i>	Pinyon Pine	15'X15'	6' ht.
DECIDUOUS TREES:						
	GTSM	2	<i>Gleditsia triacanthos</i> 'Shademaster'	Shademaster Honeylocust	30'X25'	1-1/2" cal.
	CH	2	<i>Crataegus crus-galli</i> inermis 'Hawthorn'	Cockspur Hawthorn	15'X15'	1-1/2" cal.
	QAC	11	<i>Quercus alba</i> Q. robur 'Crimschmidt'	Crimson Spire Oak	15' x 45'	1-1/2" cal.
EVERGREEN SHRUBS:						
	JL	13	<i>Juniperus sabinna</i>	Buffalo Juniper	6-8' x 12-18"	5 gal
	JA	14	<i>Juniperus chinensis</i> 'Armstrong'	Armstrong Juniper	3-4' x 3-4'	5 gal.
DECIDUOUS SHRUBS:						
	SJ	13	<i>Spiraea japonica</i> 'Majic Carpet'	Majic Carpet, Spiraea	1-2' x 1-2'	#1 CONT.
	HP	19	<i>Hesperaloe parviflora</i>	Red Yucca	2-4' / 2-4'	#1 CONT.
	RHA	11	<i>Rhus aromatica</i> 'Gro-low'	Sumac Gro-Low	5-7' x 2-3'	#1 CONT.
ORNAMENTAL GRASSES:						
	CA	30	<i>Calamagrostis acutiflora</i> 'Karl Foerster'	Feather Reed Grass	1-3' / 2-3'	#1 CONT.
	CAO	10	<i>Oryzopsis hymenoides</i>	Indian Ricegrass	1-3' / 2-3'	#1 CONT.
	PH	8	<i>Sporobolus crylandrus</i>	Sand dropseed	1-3' / 2-3'	#1 CONT.

NOTE: ALL QUANTITIES SHALL BE PER PLAN. LEGEND SF ARE FOR REFERENCE ONLY.

GROUND COVER LEGEND

SYMBOL	DESCRIPTION	APPROX. SF
	Arkansas Tan Rock Cobble: 4-8" Diameter (with weed barrier)	10,897 SF
	River Rock: 2-4" Diameter, 4" DEPTH (with weed barrier)	8,425 SF
	4-8" Dia. Arkansas Tan Cobble	

NOTE: ALL QUANTITIES SHALL BE PER PLAN. LEGEND SF ARE FOR REFERENCE ONLY.

GRADE NOTE
 GRADE SHALL BE ESTABLISHED BASED ON GRADING PLAN BY OTHERS, AND FOR LANDSCAPE MATERIALS PER PLAN. FINAL SOIL GRADE FOR 5-12" DIAMETER ROCK AREAS SHALL BE 4" BELOW TOP OF SIDEWALK/CURB/PAVING. AT ALL OTHER ROCK AREAS GRADE SHALL BE 3" BELOW SIDEWALK/CURB. AT SOD/SEED AREAS GRADE SHALL BE 1" BELOW TOP OF SIDEWALK/CURB.

UTILITIES NOTE
 VERIFY LOCATION AND DEPTH OF ALL UNDERGROUND UTILITIES PRIOR TO START OF WORK. CALL 811 FOR UTILITY LOCATES. TREE TRUNK PLACEMENT SHALL BE 6" MINIMUM DISTANCE FROM ANY GAS OR ELECTRIC AND 10" FROM GAS MAINS RATED AT 120PSI. FOR SANITARY SEWER AND WATER MAINLINES TREES SHALL NOT BE LOCATED WITHIN EASEMENTS AND WITHIN 15' OF ANY MAINLINE. ANY CONFLICT BETWEEN TREE LOCATIONS AND UTILITIES SHOWN ON PLANS SHALL BE RESOLVED WITH GENERAL CONTRACTOR PRIOR TO PLANTING. ALL ELECTRICAL VAULTS AND TRANSFORMERS SHALL BE KEPT CLEAR FROM PLANT MATERIAL. PER COLORADO SPRINGS UTILITIES GUIDELINES "LANDSCAPING AROUND ELECTRICAL EQUIPMENT". SEE COLORADO SPRINGS UTILITIES CONSTRUCTION STANDARD DRAWINGS 16-302 FOR SPECIFIC CLEARANCE REQUIREMENTS. ALL SHRUBS TO BE LOCATED 3' CLEAR OF ALL FIRE HYDRANTS AT MATURE SIZE.

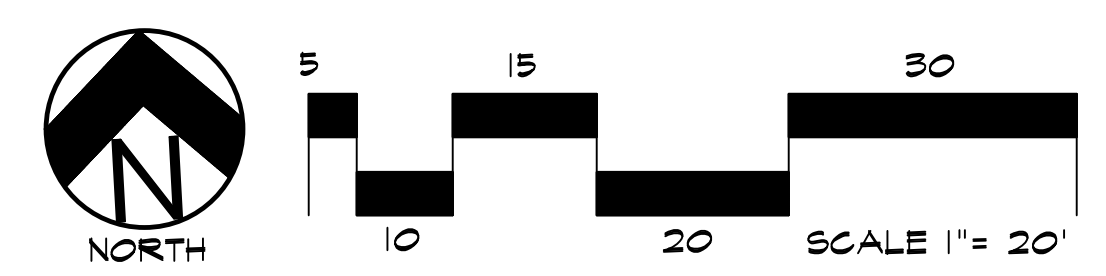
DOCUMENT NOTE
 IRRESPECTIVE OF ANY OTHER TERM IN THIS DOCUMENT, LANDSCAPE ARCHITECT SHALL NOT CONTROL OR BE RESPONSIBLE FOR CONSTRUCTION MEANS, METHODS, TECHNIQUES, SCHEDULES, SEQUENCES OR PROCEDURES, OR FOR CONSTRUCTION SAFETY OR ANY OTHER RELATED PROGRAMS, OR FOR ANOTHER PARTIES' ERRORS OR OMISSIONS OR FOR ANOTHER PARTIES' FAILURE TO COMPLETE THEIR WORK OR SERVICES IN ACCORDANCE WITH LANDSCAPE ARCHITECT'S DOCUMENTS.

Include:

- Owner name, contact telephone number, and email
- Applicant name (if not owner), contact telephone number, and email
- Plan preparer contact telephone number and email
- Vicinity map showing the subdivision in relation to section lines and existing or proposed arterial or collector roadways.
- The outlines of all structures, parking areas, outside storage areas, loading areas, and refuse collection area(s) in relation to the landscaping.
- The location of all utilities, walls, fences, exterior parking and loading areas, pedestrian walks or paths, pedestrian-oriented areas, vehicular drives, storm water detention areas, and other manmade elements. Detail drawings of all required structures used for screening purposes (Example: refuse areas, equipment screening, and/or gates).
- Sight distance triangles and any plantings, signs, walls, structures, or other visual obstructions within the triangles where applicable.
- If the application includes a request for approval of an alternative landscape plan, the landscape plan shall include a statement requesting approval of the alternative design and justification for the request unless otherwise provided for in the letter of intent.

OWNERS
 VE
 2-055
 2-0
 AL

LANDSCAPE PLAN - AREA 'A'



HIGHER GROUND DESIGNS, INC.
 LANDSCAPE ARCHITECTURE, PLANNING & IRRIGATION DESIGN
 5350 NORTH ACADEMY BLVD., STE. 207
 COLORADO SPRINGS, CO 80918
 Phone 719-477-1646
 Fax 719-566-1122



SMITH PLUMBING & HEATING
 1875 MAIN STREET
 EL PASO COUNTY, COLORADO

PREPARED FOR:

THESE DRAWINGS ARE THE PROPERTY OF HIGHER GROUND DESIGNS, INC. AND SHALL NOT BE USED FOR ANY OTHER PROJECT WITHOUT THE AUTHORIZATION BY HIGHER GROUND DESIGNS, INC.

CITY STAMP

NOT FOR CONSTRUCTION

JOB NUMBER
992-21

REVISIONS

ORIGINAL DATE
6-8-21

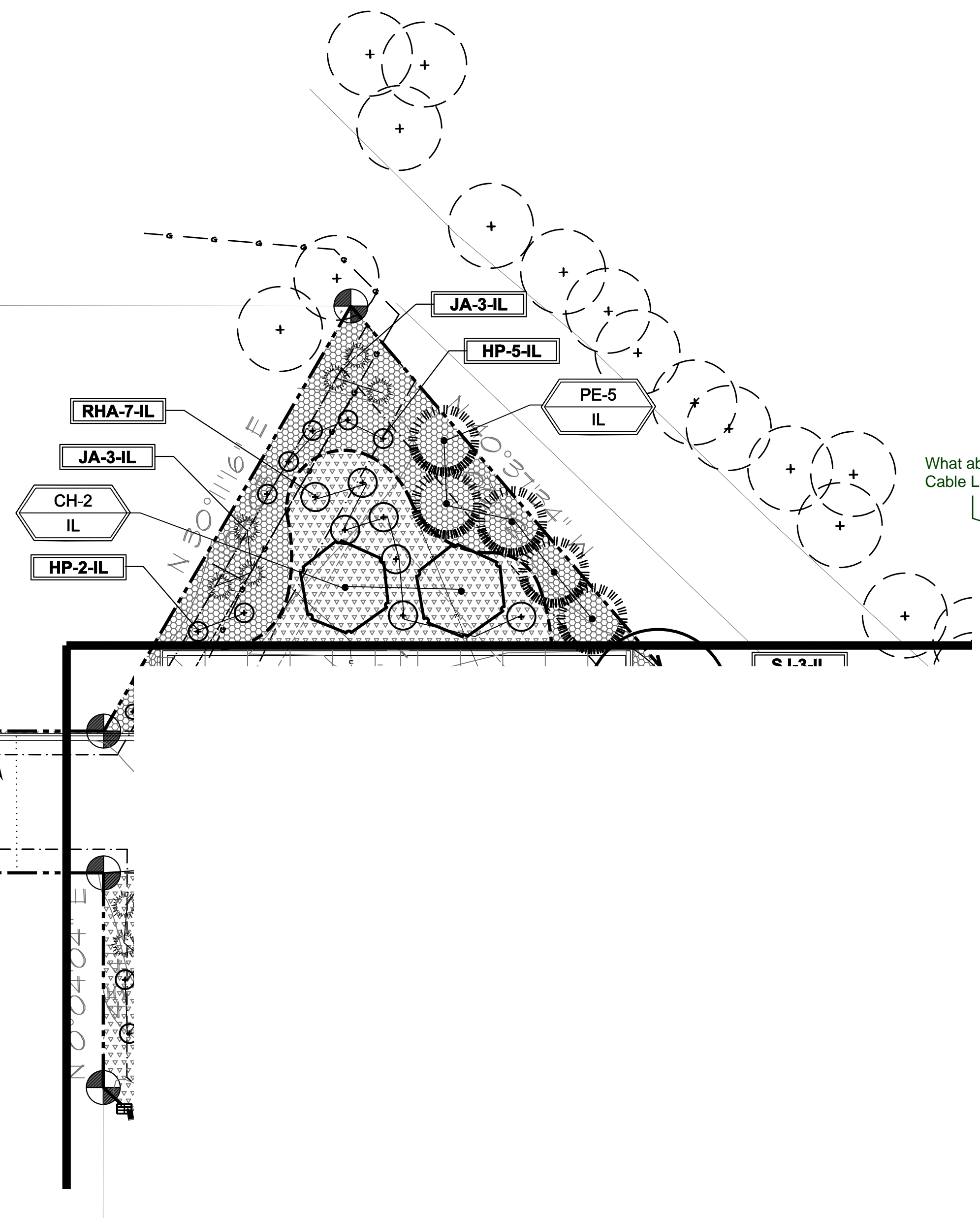
DRAWN BY
 DESCRIPTION
LANDSCAPE PLAN - AREA A

SHEET NO.
L1.1

1919 MAIN STREET, LLC
 1919 MAIN STREET
 PARCEL NO: 65020-00-028
 ZONE: CC CAD-0
 USE: SERVICE GARAGE

GREAT DANE VENTURES, LLC
 MAIN STREET
 PARCEL NO: 65020-00-061
 ZONE: CC CAD-0
 USE: WAREHOUSE/STORAGE

RONALD D. BLAIR
 1845 MAIN STREET
 PARCEL NO: 65020-00-059
 ZONE: CC CAD-0
 USE: MERCHANDISING



CODE REQUIREMENTS

LANDSCAPE SETBACKS (LS)					
STREET NAME OR ZONE BOUNDARY (ELEV.)	STREET CLASSIFICATION	WIDTH (FT.)	LINEAR FOOTAGE	TREE/FEET REQUIRED	NO. OF TREES REQ./PROVIDED
MAIN STREET	NON-ARTERIAL	6'	30	1/30 FT	1/0 (LIMITED AREA)

MOTOR VEHICLE LOTS (MV)			
NO. OF VEHICLE SPACES PROVIDED	SHADE TREES (1/15 SPACES) REQ./PROV.	VEHICLE LOT FRONTAGE(S)	2/3 LENGTH OF FRONTAGE (FT)
43	2/2	N/A	N/A
MIN. 3' SCREENING PLANTS REQ./PROV.	EVERGREEN PLANTS REQ. 50%/PROV.		
0/0	0/0		

INTERNAL LANDSCAPING (IL)			
INTERNAL LANDSCAPE AREA INCLUDES ALL LANDSCAPE AREAS NOT INCLUDING SETBACKS, BUFFERS OR MOTOR VEHICLE ISLANDS.			
NET SITE AREA (SF) (LESS PUBLIC R.O.W.)	PERCENT MINIMUM INTERNAL AREA (5%)	INTERNAL AREA (SF)	INTERNAL TREES (1/500 SF) (EXCLUDING DRIVEWAYS)
70,567 SF	NON-RESIDENTIAL	3,529 SF/ 3,700 SF	7/7
SHRUB SUBSTITUTES REQ./PROV.	INTERNAL PLANT ABBR. DENOTED ON PLAN	PERCENT GROUND PLANE VEG. REQ./PROV.	
0/0	IL	50%/50%	

LANDSCAPE BUFFERS AND SCREENS (LB)				
STREET NAME OR PROPERTY LINE (ELEV.)	LINEAR FOOTAGE	SETBACK BUFFER REQ. / PROV.	BUFFER TREES (1/25) REQ./PROV.	EVERGREEN TREES (1/3) REQ./PROV.
SOUTHEAST	158 LF	15/15	6/6	2/3
SOUTHWEST	387 LF	15/15	15/15	5/8

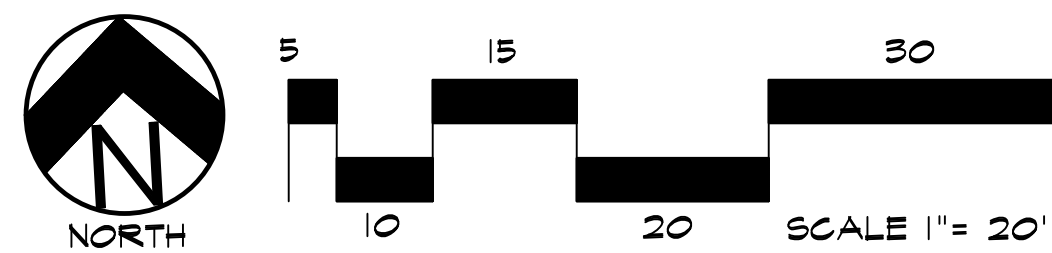
UTILITIES NOTE

VERIFY LOCATION AND DEPTH OF ALL UNDERGROUND UTILITIES PRIOR TO START OF WORK. CALL 811 FOR UTILITY LOCATES. TREE TRUNK PLACEMENT SHALL BE 6' MINIMUM DISTANCE FROM ANY GAS OR ELECTRIC AND 10' FROM GAS MAINS RATED AT 120PSI. FOR SANITARY SEWER AND WATER MAINLINES TREES SHALL NOT BE LOCATED WITHIN EASEMENTS AND WITHIN 15' OF ANY MAINLINE. ANY CONFLICT BETWEEN TREE LOCATIONS AND UTILITIES SHOWN ON PLANS SHALL BE RESOLVED WITH GENERAL CONTRACTOR PRIOR TO PLANTING. ALL ELECTRICAL VAULTS AND TRANSFORMERS SHALL BE KEPT CLEAR FROM PLANT MATERIAL. PER COLORADO SPRINGS UTILITIES GUIDELINES LANDSCAPING AROUND ELECTRICAL EQUIPMENT. SEE COLORADO SPRINGS UTILITIES CONSTRUCTION STANDARD DRAWINGS 16-302 FOR SPECIFIC CLEARANCE REQUIREMENTS. ALL SHRUBS TO BE LOCATED 3' CLEAR OF ALL FIRE HYDRANTS AT MATURE SIZE.

DOCUMENT NOTE

IRRESPECTIVE OF ANY OTHER TERM IN THIS DOCUMENT, LANDSCAPE ARCHITECT SHALL NOT CONTROL OR BE RESPONSIBLE FOR CONSTRUCTION MEANS, METHODS, TECHNIQUES, SCHEDULES, SEQUENCES OR PROCEDURES, OR FOR CONSTRUCTION SAFETY OR ANY OTHER RELATED PROGRAMS, OR FOR ANOTHER PARTIES' ERRORS OR OMISSIONS OR FOR ANOTHER PARTIES' FAILURE TO COMPLETE THEIR WORK OR SERVICES IN ACCORDANCE WITH LANDSCAPE ARCHITECT'S DOCUMENTS.

LANDSCAPE PLAN - AREA 'B'



HIGHER GROUND DESIGNS, INC.
 LANDSCAPE ARCHITECTURE, PLANNING & IRRIGATION DESIGN
 5350 NORTH ACADEMY BLVD., STE. 207
 COLORADO SPRINGS, CO 80918
 Phone 719-477-1648
 Fax 719-588-1122



SMITH PLUMBING & HEATING
 1875 MAIN STREET
 EL PASO COUNTY, COLORADO

THESE DRAWINGS ARE THE PROPERTY OF HIGHER GROUND DESIGNS, INC. AND SHALL NOT BE USED FOR ANY OTHER PROJECT WITHOUT THE AUTHORIZATION BY HIGHER GROUND DESIGNS, INC.

PREPARED FOR:

NOT FOR CONSTRUCTION	CITY STAMP	JOB NUMBER 992-21
		REVISIONS
		ORIGINAL DATE 6-8-21
		DRAWN BY DESCRIPTION LANDSCAPE PLAN - AREA B
	SHEET NO. L1.2	

GENERAL SITE NOTES

- CONTRACTOR RESPONSIBLE FOR COORDINATING AND INSTALLING ALL SLEEVING REQUIRED FOR LANDSCAPE AND IRRIGATION CONSTRUCTION. COORDINATE WITH GENERAL CONTRACTOR. ALL PLANTING AREAS SHALL RECEIVE SLEEVING. REFER TO PLANTING PLAN FOR ADDITIONAL INFORMATION.
- THE CONTRACTOR IS SPECIFICALLY CAUTIONED THAT THE LOCATION AND/OR ELEVATION OF EXISTING UTILITIES, AS SHOWN ON THESE PLANS, IS BASED ON RECORDS OF THE VARIOUS UTILITY COMPANIES AND, WHERE POSSIBLE, MEASUREMENTS TAKEN IN THE FIELD. THE INFORMATION IS NOT TO BE RELIED UPON AS BEING EXACT OR COMPLETE. THE CONTRACTOR MUST CALL THE LOCAL UTILITY LOCATION CENTER AT LEAST 48 HOURS BEFORE ANY EXCAVATION TO REQUEST EXACT FIELD LOCATIONS OF THE UTILITIES. PRIOR TO CONSTRUCTION, THE CONTRACTOR SHALL VERIFY PERTINENT LOCATIONS AND ELEVATIONS, ESPECIALLY AT CONNECTION POINTS AND AT POTENTIAL UTILITY CONFLICTS. IT SHALL BE THE RESPONSIBILITY OF THE CONTRACTOR TO RELOCATE ALL EXISTING UTILITIES THAT CONFLICT WITH THE PROPOSED IMPROVEMENTS SHOWN ON THESE PLANS.
- THE CONTRACTOR SHALL BE RESPONSIBLE FOR OBTAINING ALL NECESSARY PERMITS FOR ALL APPLICABLE AGENCIES.
- ALL MATERIALS, WORKMANSHIP, AND CONSTRUCTION OF PUBLIC IMPROVEMENTS SHALL MEET OR EXCEED THE STANDARDS AND SPECIFICATIONS SET FORTH IN LOCAL CITY STANDARDS AND SPECIFICATIONS AND APPLICABLE STATE AND FEDERAL REGULATIONS. WHERE THERE IS CONFLICT BETWEEN THESE PLANS AND THE SPECIFICATIONS, OR ANY APPLICABLE STANDARDS, THE HIGHER QUALITY STANDARD SHALL APPLY. ALL WORK SHALL BE INSPECTED AND APPROVED BY THE APPROPRIATE GOVERNING AGENCIES.
- THE CONTRACTOR SHALL HAVE ONE (1) SIGNED COPY OF THE APPROVED CONSTRUCTION DOCUMENTS, ONE (1) COPY OF THE APPROPRIATE STANDARDS AND SPECIFICATIONS, AND A COPY OF ANY PERMITS AND EXTENSION AGREEMENTS NEEDED FOR THE JOB, ON-SITE AT ALL TIMES.
- ALL REFERENCES TO ANY PUBLISHED STANDARDS SHALL REFER TO THE LATEST REVISION OF SAID STANDARD, UNLESS SPECIFICALLY STATED OTHERWISE.
- THE CONTRACTOR SHALL BE RESPONSIBLE FOR KEEPING ROADWAYS FREE AND CLEAR OF ALL CONSTRUCTION DEBRIS TRACKED FROM THE SITE.
- THE CONTRACTOR SHALL PROTECT ALL SITE ELEMENTS DURING CONSTRUCTION INCLUDING, BUT NOT LIMITED TO: CONCRETE FLATWORK, CURB & GUTTER, PAVING, SIGNS, TREES, UTILITIES, ETC. ANY DAMAGE TO INFRASTRUCTURE SHALL BE RESPONSIBILITY OF CONTRACTOR TO REPAIR AND/OR REPLACE IN EQUAL OR BETTER CONDITION. ANY DAMAGE SHALL BE DOCUMENTED THE DAY IT OCCURS AND REPORTED TO THE CLIENT WITHIN 12 HOURS. COORDINATE WITH GENERAL CONTRACTOR.
- CONTRACTOR IS RESPONSIBLE FOR SUBMITTING LANDSCAPE AND IRRIGATION SUBMITTALS TO OWNER FOR APPROVAL PRIOR TO START OF ANY WORK.

INSTALLATION NOTES

REMOVE EXISTING TREES, DEBRIS AND WEEDS FROM SITE PRIOR TO CONSTRUCTION (AS SHOWN PER PLAN).

LANDSCAPE CONTRACTOR IS RESPONSIBLE FOR MAINTAINING THE SITE DURING CONSTRUCTION. WEEDS AND TRASH SHALL BE REMOVED DAILY AS REQUIRED.

EXISTING TOPSOIL TO BE STOCKPILED ON-SITE AND USED DURING CONSTRUCTION TO ESTABLISH GRADES WITHIN LANDSCAPE AREAS AS SHOWN PER PLAN.

CONTRACTOR SHALL REFER TO ASSOCIATED LANDSCAPE CONTRACTORS OF COLORADO HANDBOOK (ALCC), 2007 REVISED EDITION FOR ALL CONSTRUCTION FOR THIS SITE. CONTACT OWNER/LANDSCAPE ARCHITECT FOR QUESTIONS.

QUANTITIES SHOWN IN PLANT SCHEDULE ARE FOR CONVENIENCE ONLY. CONTRACTOR IS RESPONSIBLE FOR INSTALLING ALL PLANT MATERIAL PER PLAN. LANDSCAPE CONTRACTOR SHALL BE RESPONSIBLE FOR ALL THEFTS OR DAMAGE TO PLANT MATERIAL ONCE PLANT MATERIAL IS DELIVERED TO JOB SITE.

LANDSCAPE ARCHITECT SHALL HAVE OPPORTUNITY TO INSPECT AND APPROVE ALL TREES AND ALL 1-15 GALLON MATERIAL AT JOB SITE PRIOR TO PLANTING, INCLUDING PLACEMENT INSPECTION.

ALL ROCK COVER AREAS ONLY TO BE PREPARED WITH LANDSCAPE FABRIC WITH STAPLES AT 5' O.C. FABRIC SEAMS TO BE OVERLAPPED 6" MIN. AND SECURED WITH STAPLES.

GROUND COVER SHALL BE CONTINUOUS UNDER ALL SHRUBS THROUGHOUT PROJECT SITE.

TREES AND SHRUBS TO RECEIVE ORGANIC MULCH PER DETAILS, INCLUDING ROCK AREAS-SEE DETAILS. ORGANIC MULCH TO BE 'CASCADE SHREDDED CEDAR' WITH NO LANDSCAPE FABRIC AND 4" DEPTH.

DO NOT PLANT SHRUBS OR TREES OF INCOMPATIBLE WATER REQUIREMENTS IMMEDIATELY ADJACENT TO ONE ANOTHER.

PLANT BACKFILL SHALL BE 70% NATIVE ON-SITE SOIL, AND 30% BREW-GRO BIOCOMP CLASS 1 (OR CITY APPROVED EQUAL)

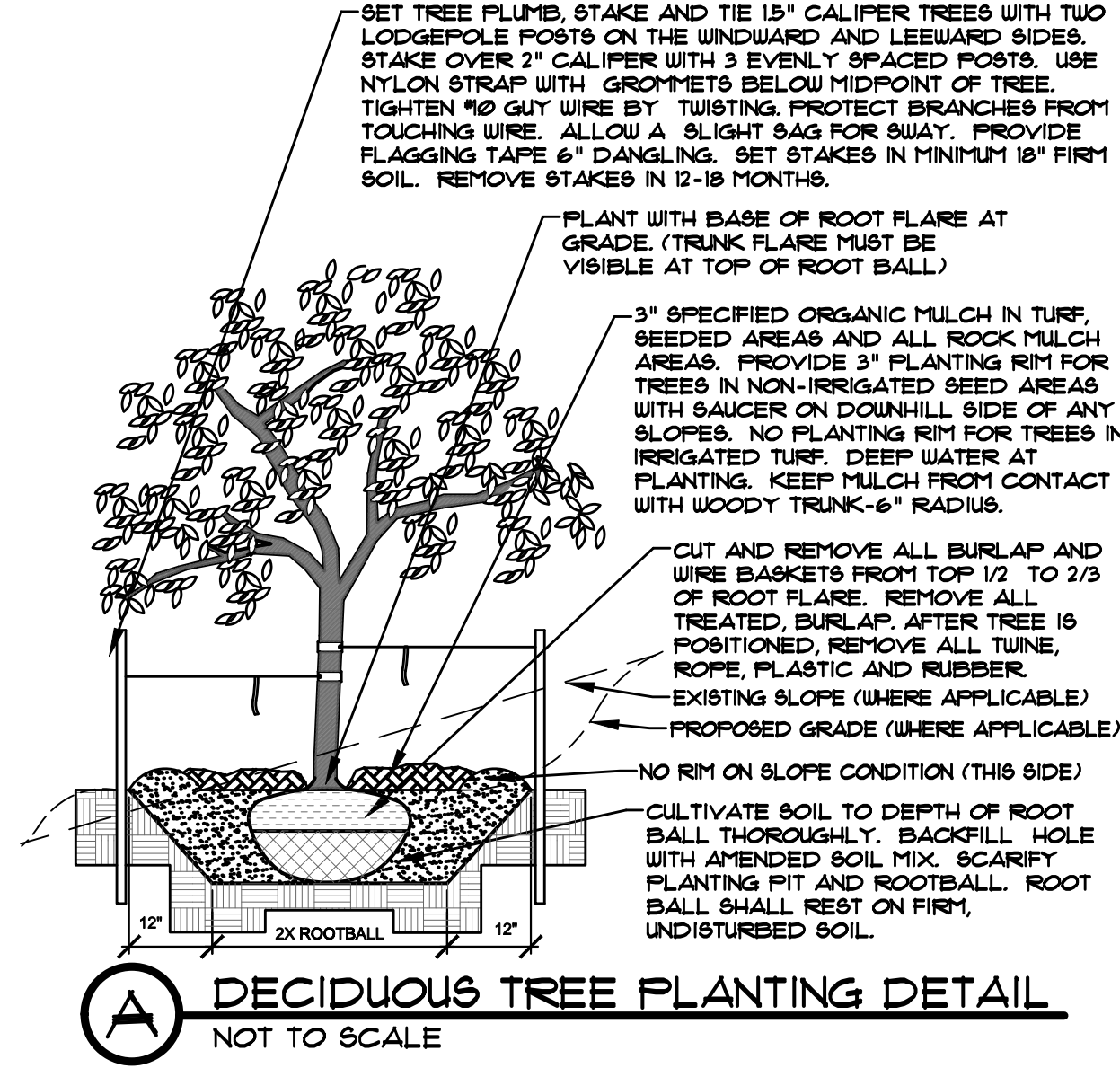
A REPRESENTATIVE SAMPLE OF THE BOTANICAL NAME TAGS, FURNISHED BY THE NURSERY STOCK PROVIDER SHALL REMAIN ATTACHED TO THE PLANTS UNTIL FINAL INSPECTION.

LANDSCAPE CONTRACTOR SHALL NOTIFY LANDSCAPE ARCHITECT IF STORM DRAINAGE FROM ADJACENT LANDSCAPE AREAS OR BUILDING DOWNSPOUTS WILL ADVERSELY AFFECT LANDSCAPED AREAS PER THE PLAN.

DECORATIVE BOULDERS SHALL BE BURIED 1/3 BELOW GRADE AND SHALL NOT OBSTRUCT VEHICULAR SIGHTLINES IF APPLICABLE.

PRIOR TO INSTALLING PLANTS OR GROUND COVER BROADCAST PREEN WEED PRE-EMERGENT IN ALL PLANTING AREAS PER MANUFACTURE RECOMMENDATIONS. WWW.PREEN.COM

- NOTES:
- MARK NORTH SIDE OF TREE AT NURSERY AND ALIGN TREE TO NORTH WHEN PLANTING.
 - DO NOT REMOVE OR CUT LEADER.
 - PRUNE ONLY DEAD, BROKEN, CROSSING OR WEAK BRANCHES (OR NARROW CROTCHES) IMMEDIATELY PRIOR TO PLANTING. DO NOT REMOVE TERMINAL BUDS THAT EXTEND TO TREE CROWN.
 - NO STRUCTURAL PRUNING OF TREE UNTIL AFTER ESTABLISHMENT PERIOD (2 GROWING SEASONS)
 - REMOVE ANY DOUBLE LEADER, UNLESS OTHERWISE DIRECTED BY OWNER'S REPRESENTATIVE.
 - KEEP PLANTS MOIST AND SHADED UNTIL PLANTING, AVOID FALL PLANTING IF POSSIBLE.
 - AMENDED BACK FILL SHALL BE 70% SOIL FROM PLANTING PIT AND 30% ORGANIC MATERIAL.
 - WRAP TRUNK ON EXPOSED SIDES OR SPECIES WITH THIN BARK USE ELECTRICAL TAPE, NOT TWINE.
 - WRAP OCTOBER 15 AND REMOVE BY MARCH 31.
 - DO NOT FERTILIZE TREE DURING THE FIRST GROWING SEASON.
 - COORDINATE WITH CITY FORESTRY FOR CURRENT INSECT & DISEASE RECOMMENDATIONS PRIOR TO PLANTING.



MAINTENANCE NOTE

ON-GOING MAINTENANCE DURING CONSTRUCTION:

THE CONTRACTOR SHALL BE RESPONSIBLE FOR PROVIDING ON-GOING MAINTENANCE OF ALL COMPLETED LANDSCAPE AND IRRIGATION WORK AS DEFINED UNDER CONTRACT WITH OWNER.

BEGIN MAINTENANCE IMMEDIATELY AFTER PLANTING AND CONTINUE UNTIL LANDSCAPE WORK IS COMPLETED, ACCEPTED BY OWNER, AND IF REQUESTED A FORMAL MAINTENANCE PERIOD IS INITIATED. MAINTAIN LAWNS BY WATERING, FERTILIZING, WEEDING, MOWING, TRIMMING AND OTHER OPERATIONS SUCH AS ROLLING, REGARDING, REPLANTING AS REQUIRED THROUGH CONSTRUCTION PERIOD. REMULCH WITH NEW MULCH IN AREAS WHERE MULCH HAS BEEN DISTURBED BY CONSTRUCTION OPERATIONS SUFFICIENTLY TO NULLIFY ITS PURPOSE. CONTRACTOR SHALL REPAIR SEEDED AREAS DAMAGED BY TRAFFIC AND/OR VANDALISM DURING THE CONSTRUCTION PERIOD.

IF THE IRRIGATION SYSTEM IS NOT AVAILABLE FOR PROPER WATERING AT THE TIME OF INSTALLATION, PROVIDE AND MAINTAIN TEMPORARY PIPING, HOSES, AND LAWN WATERING EQUIPMENT AS REQUIRED TO CONVEY WATER FROM SOURCES AND TO KEEP THE LAWN AREAS UNIFORMLY MOIST AS REQUIRED FOR PROPER GROWTH. FAILURE OF THE IRRIGATION SYSTEM SHALL NOT RELIEVE THE INSTALLER OF THE RESPONSIBILITY TO PROVIDE THE REQUIRED WATER. COORDINATE WITH OWNER.

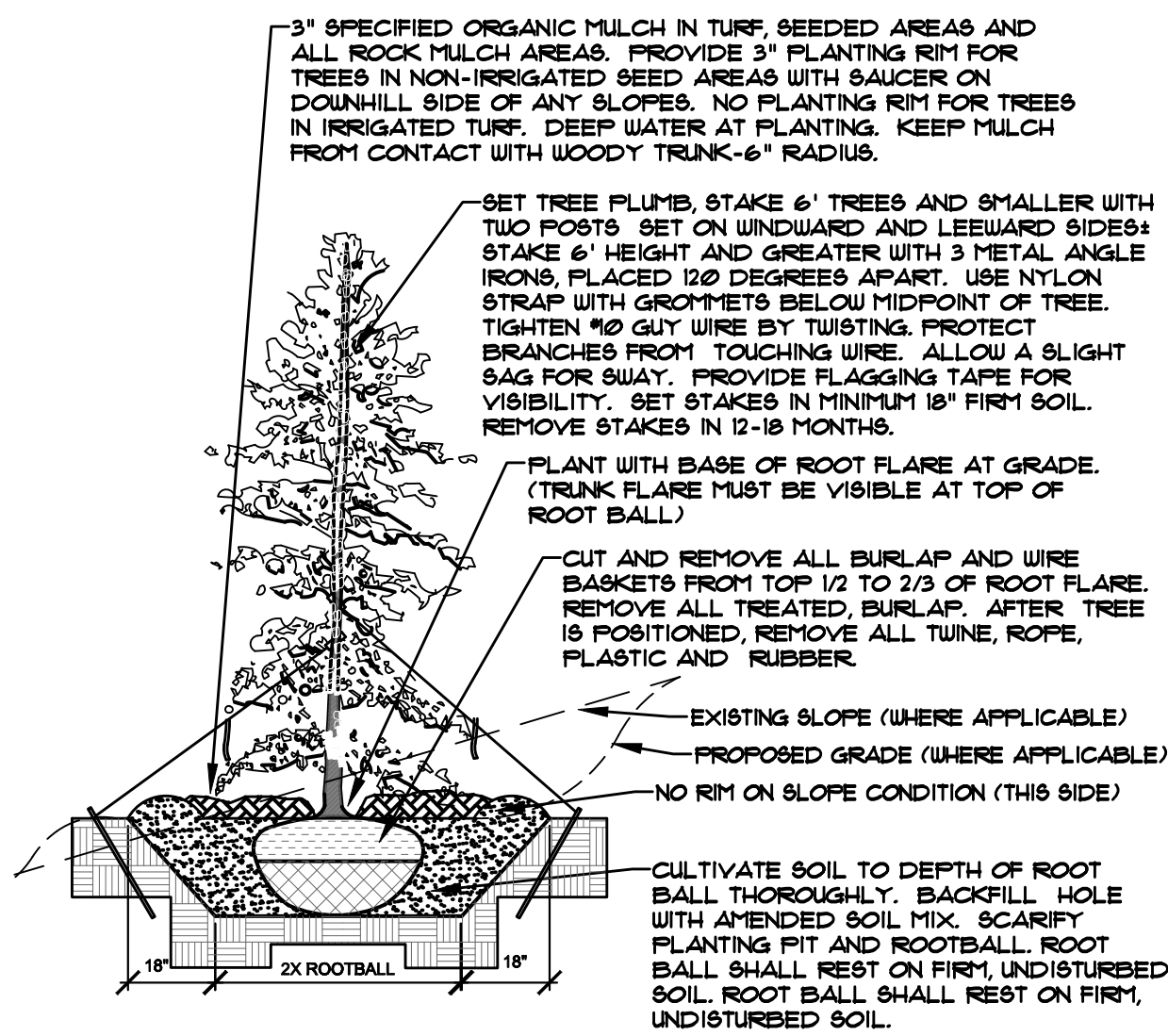
ONE-YEAR WARRANTY

AS AGREED WITH OWNER, CONTRACTOR SHALL PROVIDE ONE-YEAR WARRANTY ON ALL PLANT MATERIAL, GRASSES AND IRRIGATION SYSTEM. REPLACEMENT OF DEAD, DISEASED OR SUBSTANTIALLY DAMAGED PLANT MATERIALS SHALL BE OF THE SAME OR SIMILAR TYPE AS SET FORTH IN THE LANDSCAPE PLAN. REPLACEMENT SHALL BE MADE IN A TIME PERIOD NOT EXCEEDING 15 DAYS. PLANT MATERIAL NEEDING REPLACEMENT DURING WINTER MONTHS SHALL BE REPLACED AT THE START OF THE NEXT GROWING SEASON.

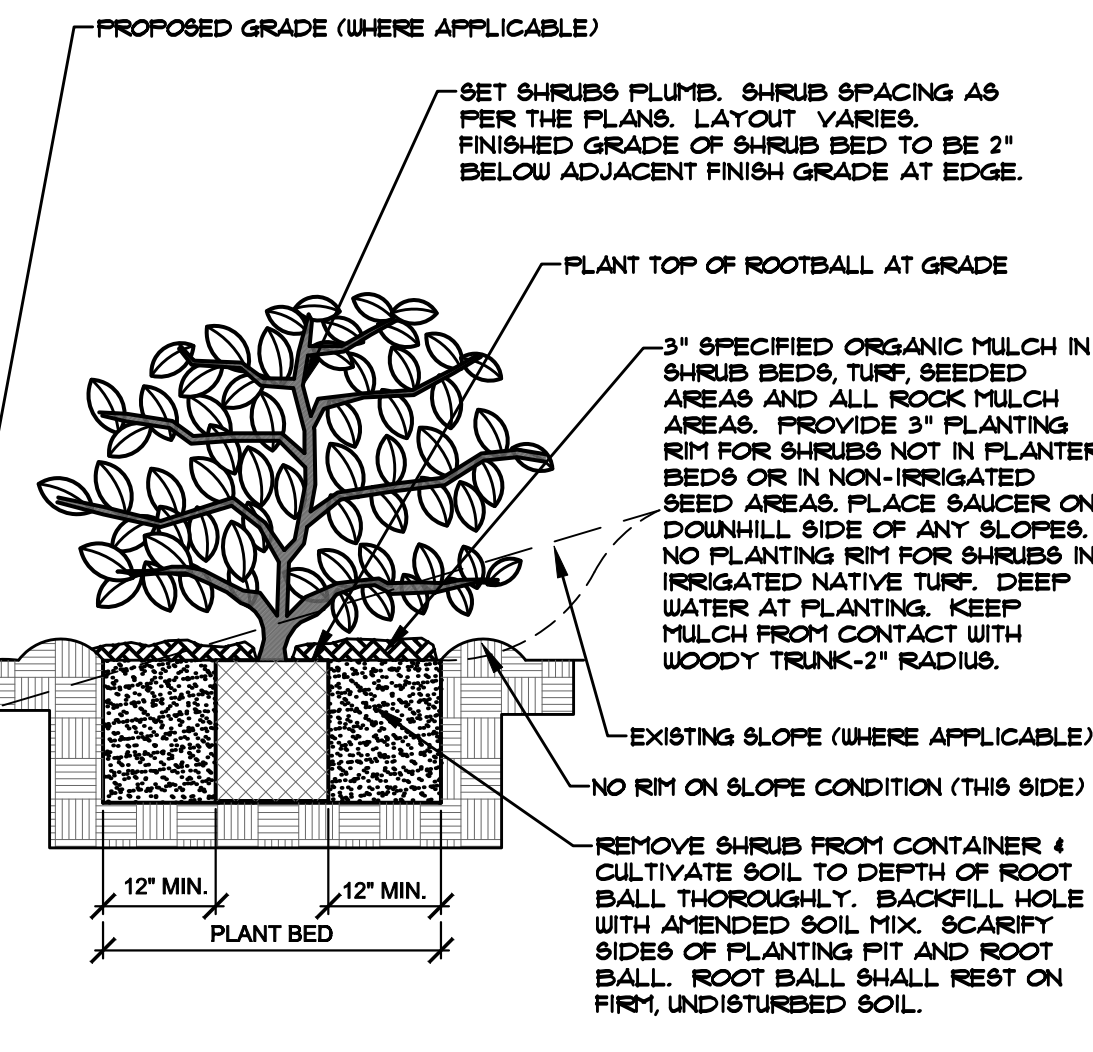
THE OWNER OF THIS PROPERTY AND ANY FUTURE OWNERS SHALL BE RESPONSIBLE FOR THE PROPER LANDSCAPE AND IRRIGATION SYSTEM MAINTENANCE OF THIS SITE AND ANY RIGHT-OF-WAY AREAS BETWEEN THE CURB AND PROPERTY BOUNDARIES OF THIS SITE. MAINTENANCE OF THIS INCLUDES, BUT IS NOT LIMITED TO, IRRIGATION INSPECTIONS AND ADJUSTMENTS, IRRIGATION SYSTEM SHUT DOWN AND START UP, IRRIGATION LEAK REPAIR, LANDSCAPE WEEDING, MOWING, SEEDING, FERTILIZING, WOOD MULCH AND ROCK ADDITIONS, PRUNING AND PLANT MATERIAL REPLACEMENTS. ALL MAINTENANCE SHALL BE DONE IN ACCORDANCE WITH THE ALCC SPECIFICATIONS HANDBOOK REV EDITION 2007. OWNER SHOULD CONTACT LANDSCAPE CONTRACTOR OR LANDSCAPE ARCHITECT REGARDING ANY QUESTIONS RELATING TO THE LANDSCAPE OR IRRIGATION SYSTEM.

- NOTES:
- MARK NORTH SIDE OF TREE AT NURSERY AND ALIGN TREE TO NORTH WHEN PLANTING.
 - DO NOT REMOVE OR CUT LEADER.
 - PRUNE ONLY DEAD OR BROKEN BRANCHES IMMEDIATELY PRIOR TO PLANTING.
 - REMOVE ANY DOUBLE LEADER, UNLESS OTHERWISE DIRECTED BY OWNER'S REPRESENTATIVE.
 - KEEP PLANTS MOIST AND SHADED UNTIL PLANTING.
 - AVOID FALL PLANTING IF POSSIBLE.
 - AMENDED BACKFILL SHALL BE 70% SOIL FROM PLANTING PIT AND 30% ORGANIC MATERIAL.
 - PINE AND SPRUCE TREES TO BE SPRAYED FOR IPB BARK BEETLE PRIOR TO PLANTING (SEE CONIFEROUS TREE NOTE ON PLANTING NOTES SHEET)

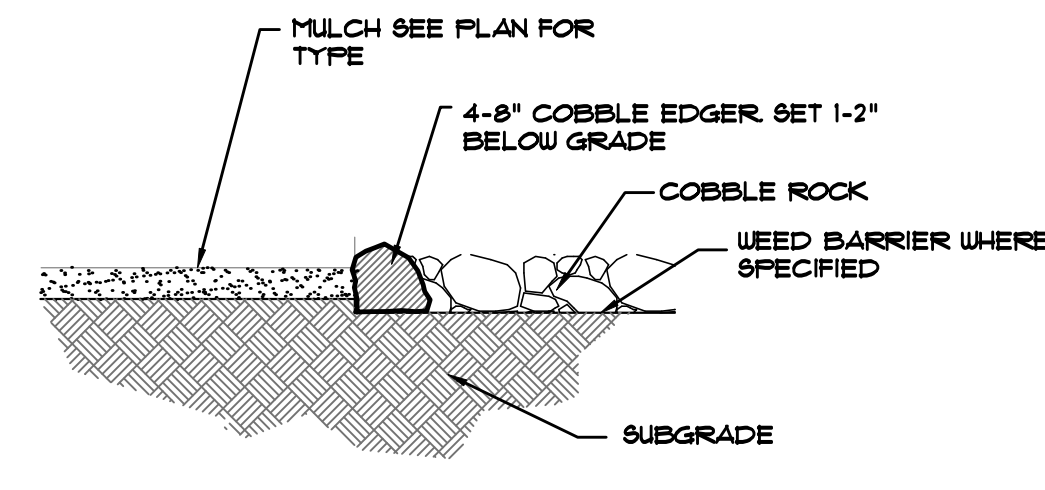
- NOTES:
- PRUNE ONLY DEAD OR BROKEN BRANCHES IMMEDIATELY PRIOR TO PLANTING.
 - KEEP PLANTS MOIST AND SHADED UNTIL PLANTING.
 - DO NOT FERTILIZE FOR AT LEAST ONE GROWING SEASON.
 - AMENDED BACK FILL SHALL BE 70% SOIL FROM PLANTING PIT AND 30% ORGANIC MATERIAL.
 - FOR ROOT END AT BOTTOM OF BALL SPLIT ROOT BALL VERTICALLY FROM BOTTOM HALFWAY TO TOP. SPREAD THE TWO HALVES OVER A MOUND OF SOIL IN PLANTING PIT.
 - FOR POT BOUND PLANTS ONLY: MAKE 4-5 VERTICAL CUTS IN ROOT BALL 1" DEEP. PLANT IMMEDIATELY.



B EVERGREEN TREE PLANTING DETAIL
NOT TO SCALE



C SHRUB PLANTING DETAIL
NOT TO SCALE



D MULCH/ROCK SECTION
NOT TO SCALE

SOIL PREP NOTES

SOIL PREPARATION FOR UNDISTURBED OR COMPACTED PLANTING AREAS:

- IF UNDISTURBED RIP EXISTING SOIL TO A DEPTH OF NINE (9) INCHES MINIMUM IN ONE DIRECTION USING AN AGRICULTURAL RIPPER WITH TINES SPACED NO FURTHER THAN EIGHTEEN (18) INCHES APART OR TILL TO 6" DEPTH. AREAS ADJACENT TO WALKS, STRUCTURES, CURBS, ETC., WHERE THE USE OF LARGE MECHANICAL EQUIPMENT IS DIFFICULT SHALL BE WORKED WITH SMALLER EQUIPMENT OR BY HAND.
- REMOVE ALL RUBBLE, STONES AND EXTRANEOUS MATERIAL OVER TWO (2) INCHES IN DIAMETER FROM THE SITE.

UTILITIES NOTE

VERIFY LOCATION AND DEPTH OF ALL UNDERGROUND UTILITIES PRIOR TO START OF WORK. CALL 811 FOR UTILITY LOCATES. TREE TRUNK PLACEMENT SHALL BE 6" MINIMUM DISTANCE FROM ANY GAS OR ELECTRIC AND 12" FROM GAS MAINS RATED AT 120PSI. FOR SANITARY SEWER AND WATER MAINS TREES SHALL NOT BE LOCATED WITHIN EASEMENTS AND WITHIN 15' OF ANY MAINLINE. ANY CONFLICT BETWEEN TREE LOCATIONS AND UTILITIES SHOWN ON PLANS SHALL BE RESOLVED WITH GENERAL CONTRACTOR PRIOR TO PLANTING. ALL ELECTRICAL VAULTS AND TRANSFORMERS SHALL BE KEPT CLEAR FROM PLANT MATERIAL. PER COLORADO SPRINGS UTILITIES GUIDELINES LANDSCAPING AROUND ELECTRICAL EQUIPMENT. SEE COLORADO SPRINGS UTILITIES CONSTRUCTION STANDARD DRAWINGS 16-302 FOR SPECIFIC CLEARANCE REQUIREMENTS. ALL SHRUBS TO BE LOCATED 3' CLEAR OF ALL FIRE HYDRANTS AT MATURE SIZE.

DOCUMENT NOTE

IRRESPECTIVE OF ANY OTHER TERM IN THIS DOCUMENT, LANDSCAPE ARCHITECT SHALL NOT CONTROL OR BE RESPONSIBLE FOR CONSTRUCTION MEANS, METHODS, TECHNIQUES, SCHEDULES, SEQUENCES OR PROCEDURES, OR FOR CONSTRUCTION SAFETY OR ANY OTHER RELATED PROGRAMS, OR FOR ANOTHER PARTIES' ERRORS OR OMISSIONS OR FOR ANOTHER PARTIES' FAILURE TO COMPLETE THEIR WORK OR SERVICES IN ACCORDANCE WITH LANDSCAPE ARCHITECT'S DOCUMENTS.

HIGHER GROUND DESIGNS, INC.
LANDSCAPE ARCHITECTURE, PLANNING & IRRIGATION DESIGN

5350 NORTH ACADEMY BLVD., STE. 207
COLORADO SPRINGS, CO 80918
Phone 719-477-1648
Fax 719-586-1122

HIGHER GROUND DESIGNS

SMITH PLUMBING & HEATING

1875 MAIN STREET
EL PASO COUNTY, COLORADO

THESE DRAWINGS ARE THE PROPERTY OF HIGHER GROUND DESIGNS, INC. AND SHALL NOT BE USED FOR ANY OTHER PROJECT WITHOUT THE AUTHORIZATION BY HIGHER GROUND DESIGNS, INC.

PREPARED FOR:

CITY STAMP

JOB NUMBER
992-21

REVISIONS

ORIGINAL DATE

6-8-21

DRAWN BY

DESCRIPTION

DETAILS AND NOTES

SHEET NO.

L1.3

NOT FOR CONSTRUCTION