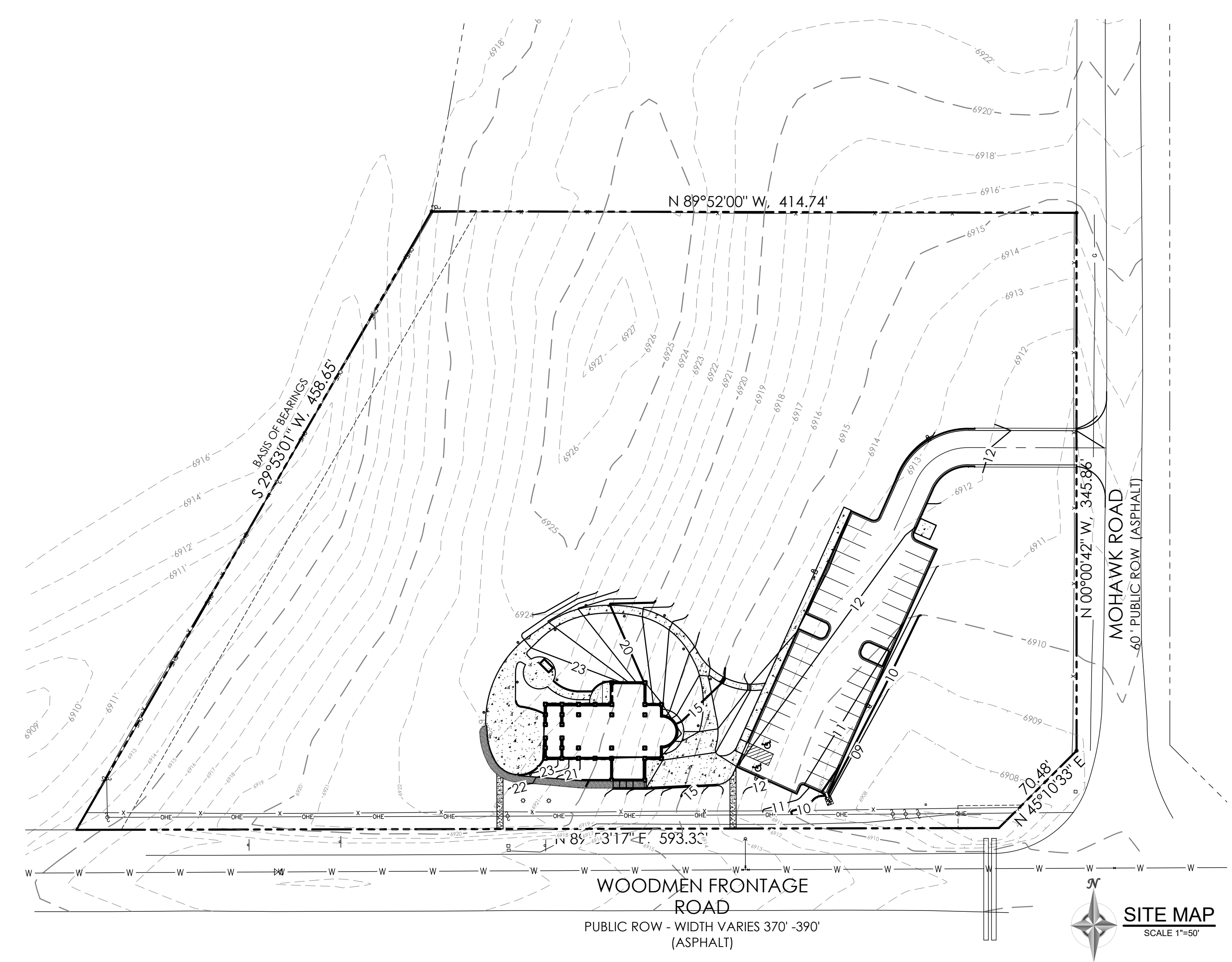


STANDARD EL PASO COUNTY GRADING & EROSION CONTROL PLAN NOTES

- 1. STORMWATER DISCHARGES FROM CONSTRUCTION SITES SHALL NOT CAUSE OR THREATEN TO CAUSE POLLUTION, CONTAMINATION, OR DEGRADATION OF STATE WATERS...
- 2. NOTWITHSTANDING ANYTHING DEPICTED IN THESE PLANS IN WORDS OR GRAPHIC REPRESENTATION, ALL CONSTRUCTION RELATED TO ROADS, STORM DRAINAGE AND EROSION CONTROL SHALL CONFORM TO THE STANDARDS AND REQUIREMENTS OF THE MOST RECENT VERSION OF THE RELEVANT ADOPTED EL PASO COUNTY STANDARDS...
- 3. A SEPARATE STORMWATER MANAGEMENT PLAN (SWMP) FOR THIS PROJECT SHALL BE COMPLETED AND AN EROSION AND STORMWATER QUALITY CONTROL PERMIT (ESQCP) ISSUED PRIOR TO COMMENCING CONSTRUCTION...

GRADING AND EROSION CONTROL PLANS for ST. JOHN THE BAPTIST ORTHODOX CHURCH LOT 4, BLOCK 2, PAWNEE RANCHEROS, FILING NO. 1, EL PASO COUNTY, COLORADO



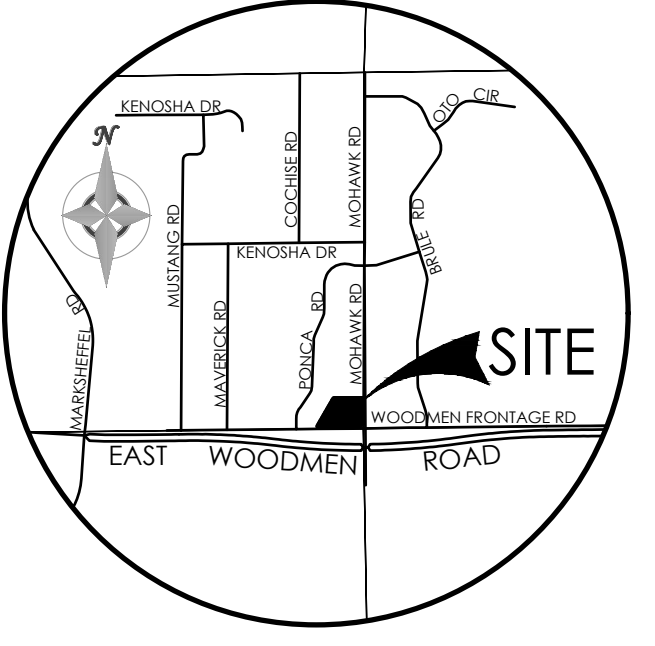
GENERAL NOTES

- 1. ALL NEW CONSTRUCTION IS TO CONFORM TO THE SPECIFICATIONS OF EL PASO COUNTY.
- 2. UNDERGROUND FACILITIES, STRUCTURES AND UTILITIES HAVE BEEN DRAWN FROM AVAILABLE RECORDS AND/OR SURFACE EVIDENCE. THE LOCATION OF ALL UTILITIES MAY NOT BE SHOWN OR MAY NOT HAVE BEEN LOCATED...
- 3. EXISTING CONDITIONS SHALL BE VERIFIED BY THE GENERAL CONTRACTOR. DISCREPANCIES ARE TO BE REPORTED TO THE ENGINEER PRIOR TO CONSTRUCTION.

Table with 3 columns: Grass, Variety, Amount in PLS lbs. per Acre. Includes items like Sideoats Grama, Western Wheatgrass, Slender Wheatgrass, etc.

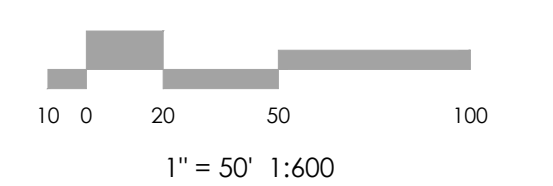
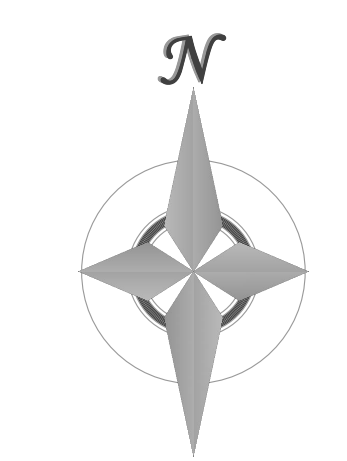
STANDARD EL PASO COUNTY CONSTRUCTION PLAN NOTES

- 1. ALL DRAINAGE AND ROADWAY CONSTRUCTION SHALL MEET THE STANDARDS AND SPECIFICATIONS OF THE CITY OF COLORADO SPRINGS/EL PASO COUNTY DRAINAGE CRITERIA MANUAL, VOLUMES 1 AND 2.
- 2. CONTRACTOR SHALL BE RESPONSIBLE FOR THE NOTIFICATION AND FIELD NOTIFICATION OF ALL EXISTING UTILITIES, WHETHER SHOWN ON THE PLANS OR NOT...
- 3. CONTRACTOR SHALL KEEP A COPY OF THESE APPROVED PLANS, THE GRADING AND EROSION CONTROL PLAN, THE STORMWATER MANAGEMENT PLAN (SWMP)...

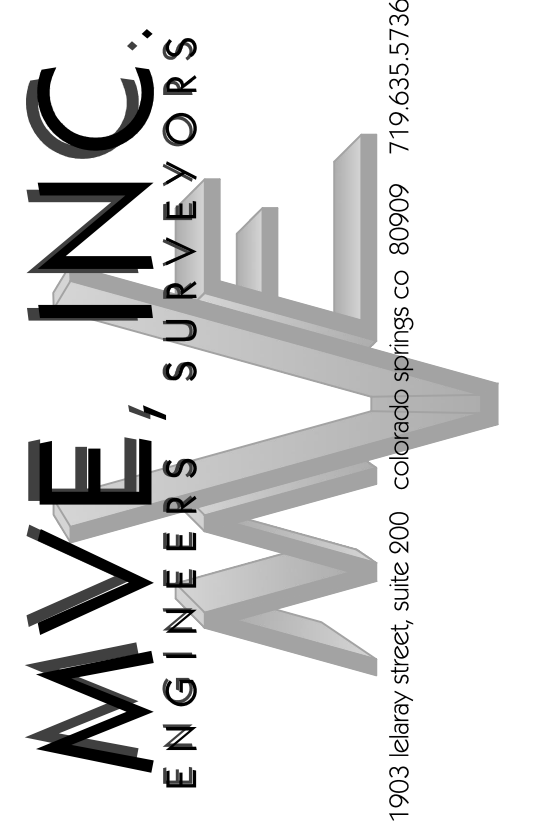


VICINITY MAP NOT TO SCALE

BENCHMARK



1" = 50' 1:600



REVISIONS

DESIGNED BY: ST. JOHN THE BAPTIST ORTHODOX CHURCH

GRADING & EROSION CONTROL PLAN COVER SHEET

C1.1 MVE PROJECT 61200 MVE DRAWING GEC-CS

September 8, 2023 SHEET 1 OF 3

COMPANIES AND AGENCIES

- OWNER: SS CONSTANTINE & HELEN ORTHODOX CHURCH, 2770 N. CHESTNUT ST., COLORADO SPRINGS, CO 80807
- ENGINEER: M.V.E. INC., 1903 LELARAY STREET, STE 200, COLORADO SPRINGS, CO 80909
- ELECTRIC: MOUNTAIN VIEW ELECTRIC ASSOCIATION, 11140 EAST WOODMEN ROAD, FALCON, CO 80831

SHEET INDEX

Table with 3 columns: PLAN SET SHEET NO., SHEET INDEX, M.V.E. DRAWING NO. Lists sheets 1.1 (1 of 3) COVER SHEET, 1.2 (2 of 3) GRADING & EROSION CONTROL PLAN, 1.3 (3 of 3) EROSION CONTROL DETAILS.

LEGEND

Legend defining symbols for Boundary Line, Lot Line, Easement Line, Index Contour, Intermediate Contour, Test Hole Location, Curbs and Gutter, Sign, Fence, Light Pole, Manhole, Utility Pole, Misc Object, Pile, Culvert, Rock, Mailbox, Tree, Riprap, Pole-anchor.



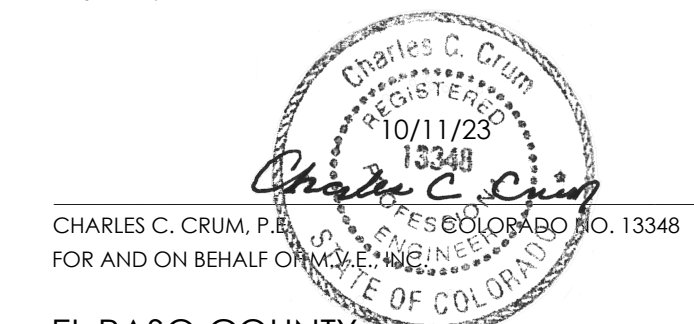
OWNERS STATEMENT

SS CONSTANTINE & HELEN ORTHODOX CHURCH, THE OWNER, HAS READ AND WILL COMPLY WITH THE REQUIREMENTS OF THE GRADING AND EROSION CONTROL PLAN.

Signature of Father Anthony, dated 9/16/23, for SS Constantine & Helen Orthodox Church.

DESIGN ENGINEER'S STATEMENT

THIS GRADING AND EROSION CONTROL PLAN WAS PREPARED UNDER MY DIRECTION AND SUPERVISION AND IS CORRECT TO THE BEST OF MY KNOWLEDGE AND BELIEF. SAID PLAN HAS BEEN PREPARED ACCORDING TO THE CRITERIA ESTABLISHED BY THE COUNTY FOR GRADING AND EROSION CONTROL PLANS...



CHARLES C. CRUM, P.E., FOR AND ON BEHALF OF M.V.E. INC., DATE 10/11/2023

EL PASO COUNTY

COUNTY PLAN REVIEW IS PROVIDED ONLY FOR GENERAL CONFORMANCE WITH COUNTY DESIGN CRITERIA. THE COUNTY IS NOT RESPONSIBLE FOR THE ACCURACY AND ADEQUACY OF THE DESIGN, DIMENSIONS, AND/OR ELEVATIONS WHICH SHALL BE CONFIRMED AT THE JOB SITE...

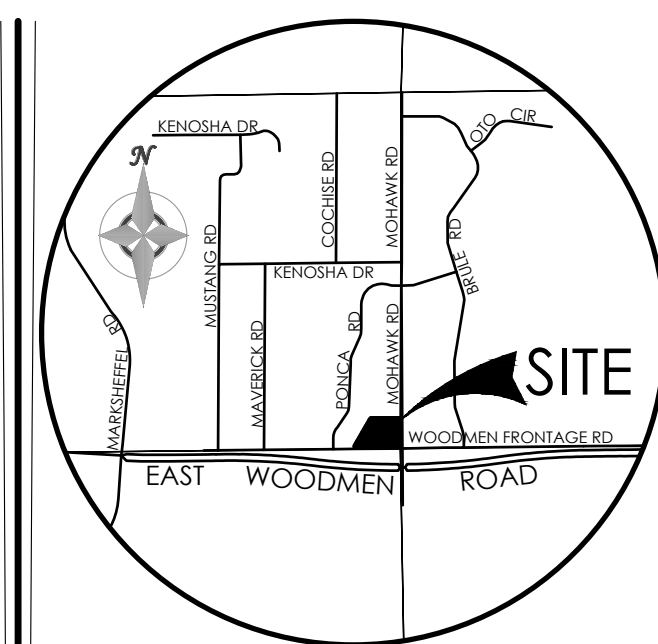
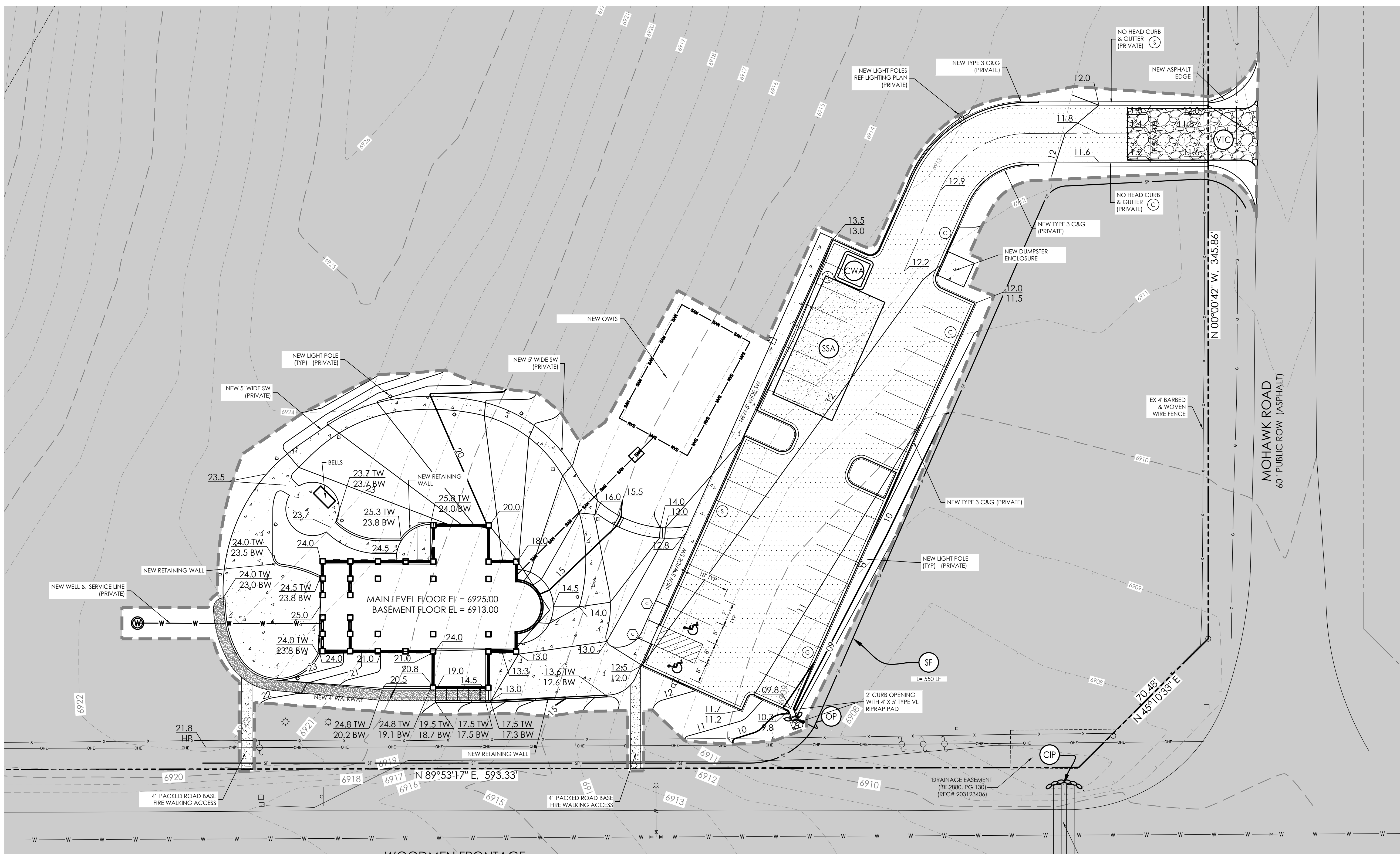
FILED IN ACCORDANCE WITH THE REQUIREMENTS OF THE EL PASO COUNTY LAND DEVELOPMENT CODE, DRAINAGE CRITERIA MANUAL AND ENGINEERING CRITERIA MANUAL AS AMENDED.

IN ACCORDANCE WITH EGM SECTION 1.1.2, THESE CONSTRUCTION DOCUMENTS WILL BE VALID FOR CONSTRUCTION FOR A PERIOD OF 2 YEARS FROM THE DATE SIGNED BY THE EL PASO COUNTY ENGINEER...

Approved by Gilbert LaForce, P.E., Engineering Manager, Date: 10/12/2023 9:21:17 AM, El Paso County Department of Public Works.

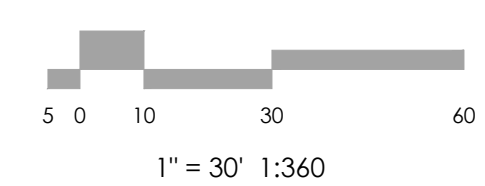
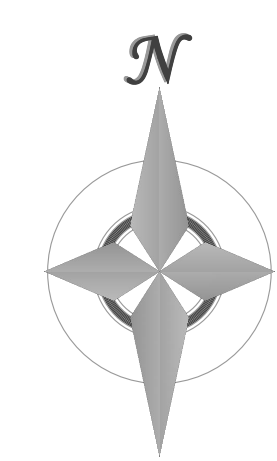
PPR 2255

EPC 10/12/23



VICINITY MAP
NOT TO SCALE

BENCHMARK



MVE, INC.
ENGINEERS / SURVEYORS

1903 Library Street, Suite 200, Colorado Springs, CO 80909 719.635.5736

REVISIONS

DESIGNED BY _____
DRAWN BY _____
CHECKED BY _____
AS-BUILT BY _____
CHECKED BY _____

ST. JOHN THE BAPTIST
ORTHODOX CHURCH

GRADING & EROSION
CONTROL PLAN
PLAN SHEET

C1.2 MVE PROJECT 61200
MVE DRAWING GEC-PS

September 8, 2023
SHEET 2 OF 3

PPR 2255

EPC 10/12/23

BMP LEGEND

MAP SYMBOL	KEY	DESCRIPTION
INITIAL BMPs		
	SSA	STABILIZED STAGING AREA (Initial BMP)
	VTC	VEHICLE TRACKING CONTROL (Initial BMP)
	CIP	CULVERT INLET PROTECTION (Initial BMP)
	SF	SILT FENCE (Initial BMP)
INTERIM BMPs		
	OP	OUTLET PROTECTION (RIP-RAP) (Interim BMP)
FINAL BMPs		
	SR	SURFACE ROUGHENING (Final BMP)
	MU	MULCHING (Final BMP)
	PS	PERMANENT SEEDING (Final BMP)
		DRAINAGE FLOW ARROW
		LIMITS OF CONSTRUCTION/DISTURBANCE
		LIMITS OF SOIL TYPE
		CUT/FILL BOUNDARY

EROSION CONTROL DATA

TIMING	
ANTICIPATED START & COMPLETION TIME PERIOD OF SITE GRADING	SUMMER 2023 - SPRING 2024
EXPECTED DATE ON WHICH FINAL STABILIZATION WILL BE COMPLETED	SUMMER 2024
AREAS	
TOTAL AREA OF SITE	4.79 ACRES
AREA OF THE SITE TO BE CLEARED, EXCAVATED OR GRADED	0.99 ACRES
RECEIVING WATERS	
NAME OF RECEIVING WATERS	SAND CREEK
SOIL DATA	
PRIMARY SOIL DESCRIPTION	SEE TABLE
PERMEABILITY	RAPID
SURFACE RUNOFF	SLOW
HAZARD OF EROSION	SLIGHT TO MODERATE
HYDROLOGIC SOIL GROUP	A
EXISTING PERCENT IMPERVIOUS	0%
DEVELOPED PERCENT IMPERVIOUS	9.8%

HYDROLOGIC SOIL GROUP

MAP UNIT NUMBER	DESCRIPTION
8 / 9	BLAKLAND LOAMY SAND
19	COLUMBINE

GENERAL NOTES

THERE ARE NO PROPOSED BATCH PLANTS ON SITE
NO-BUILD AREAS ARE AS INDICATED ON THIS PLAN

VEGETATION:
SITE CONSIST OF OPEN PRAIRIE WITH NATIVE GRASSES.

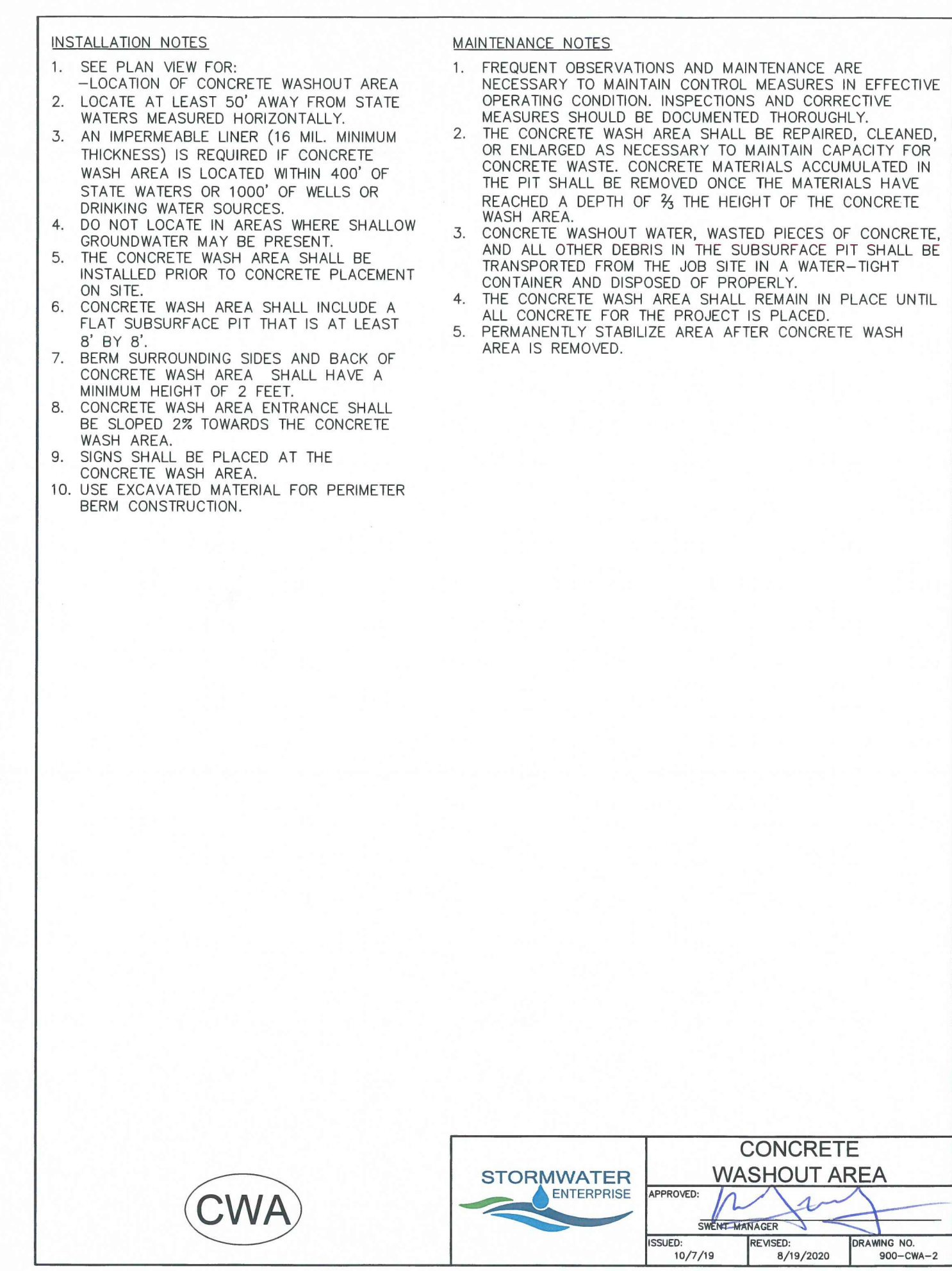
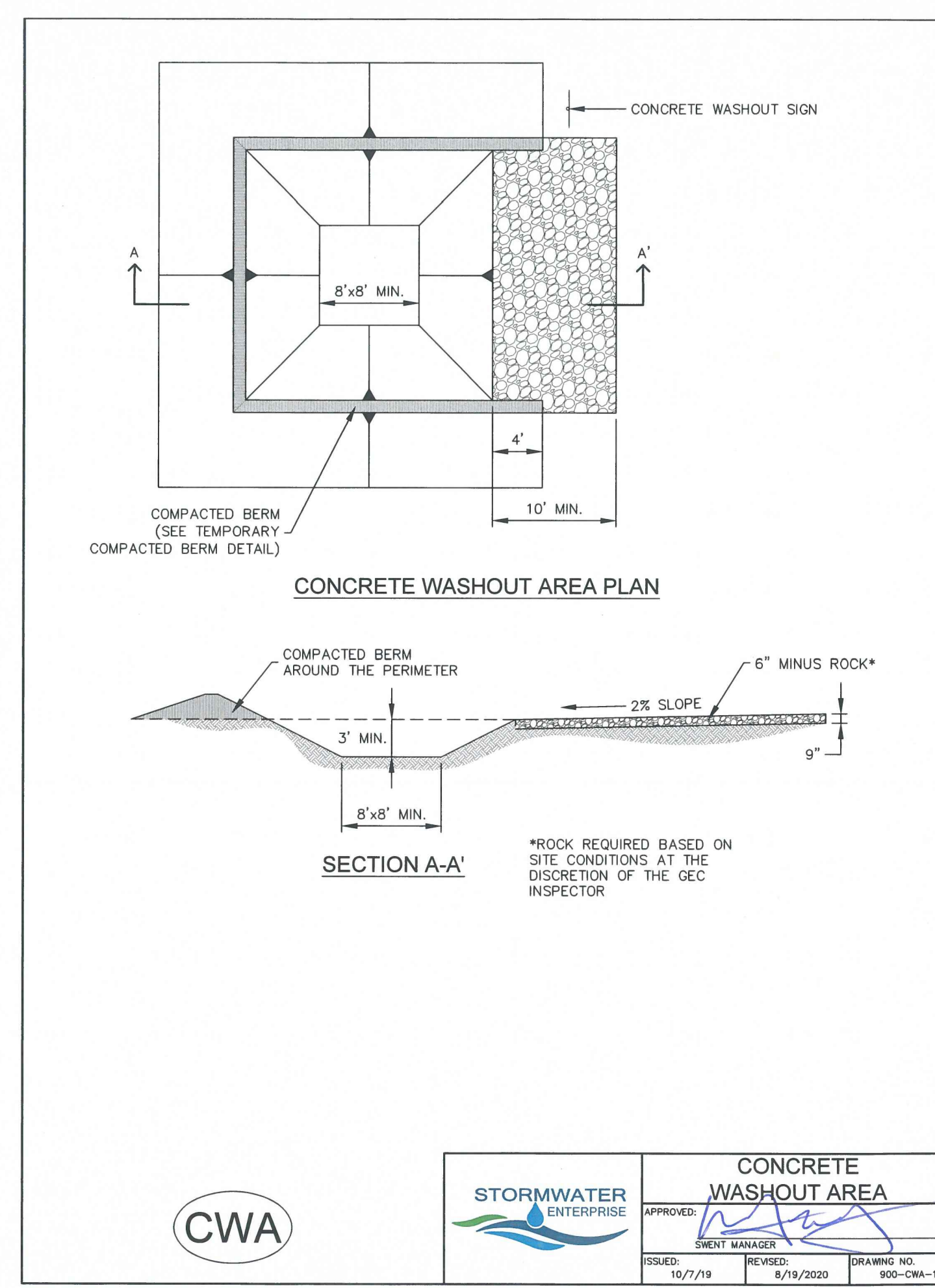
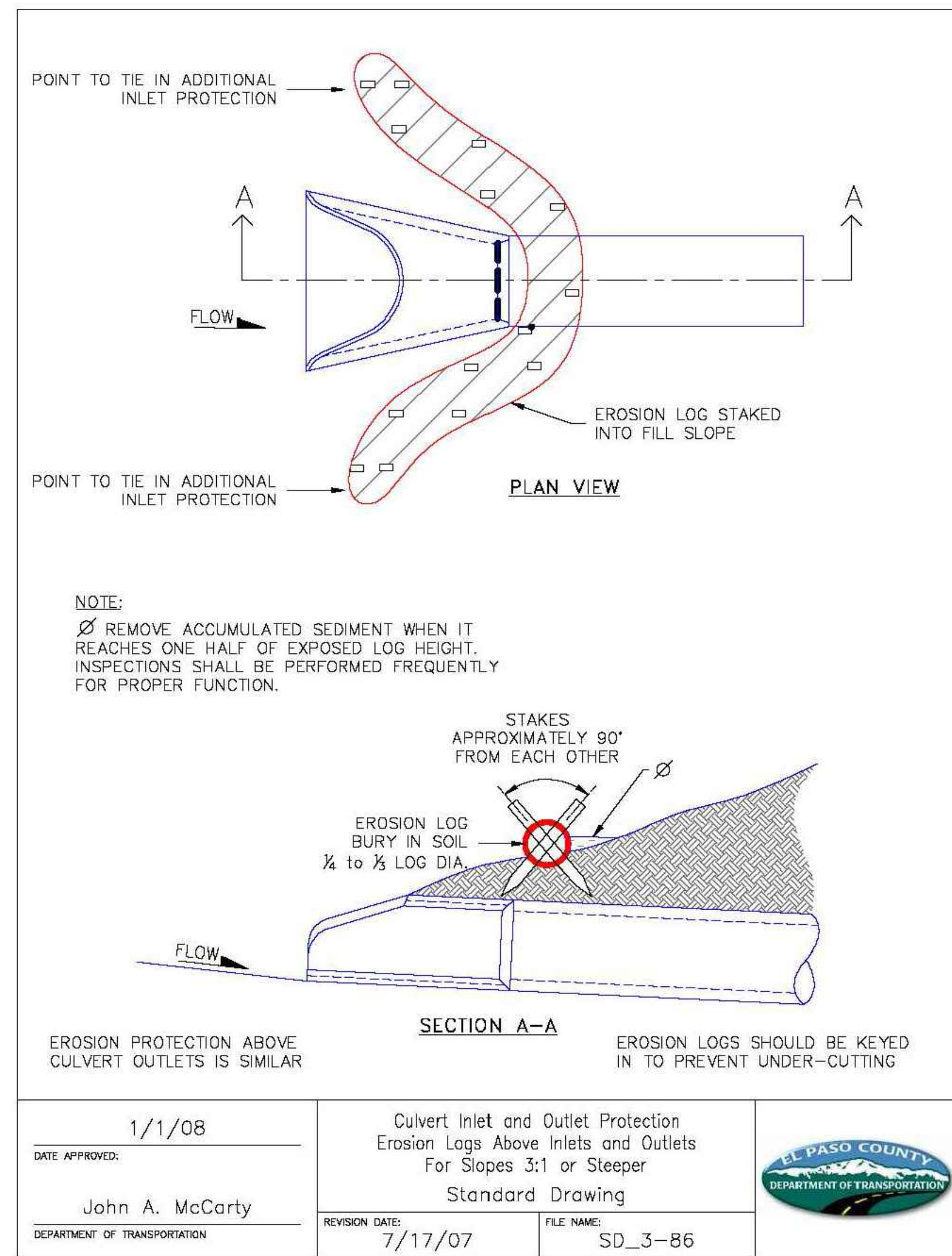
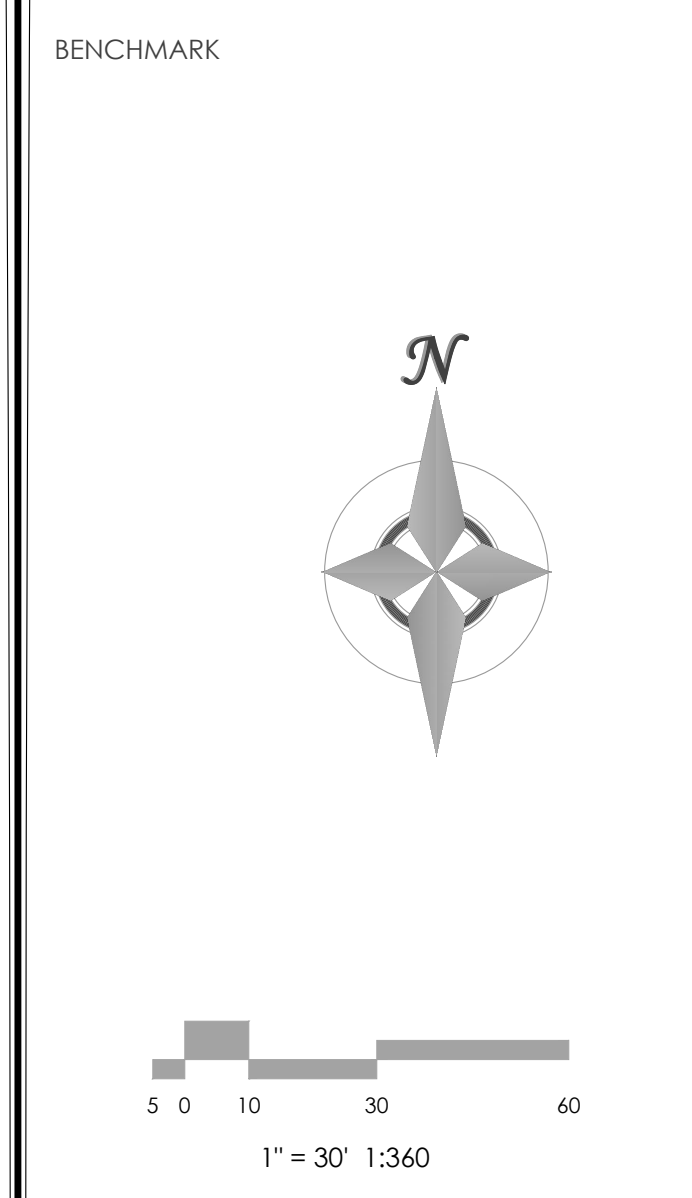
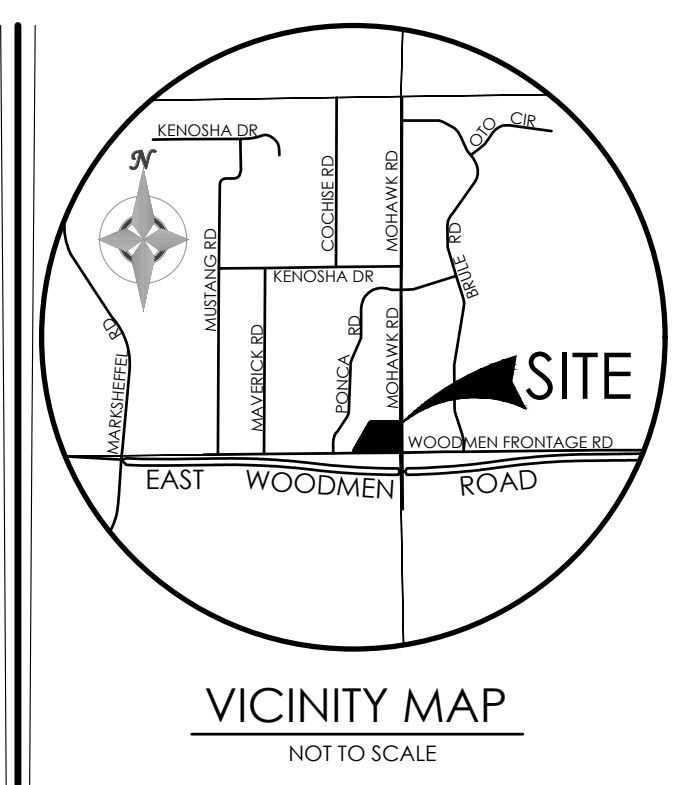
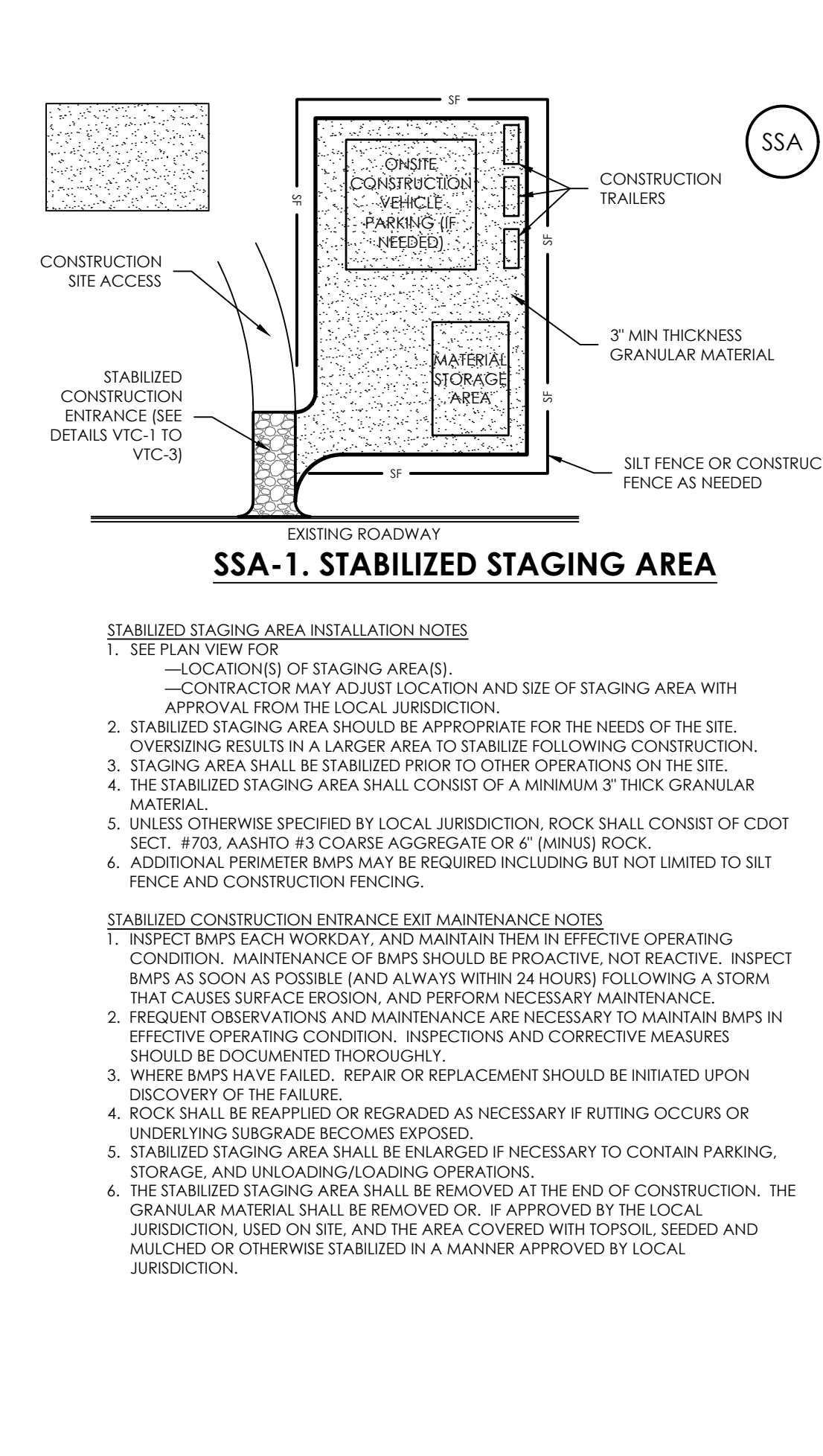
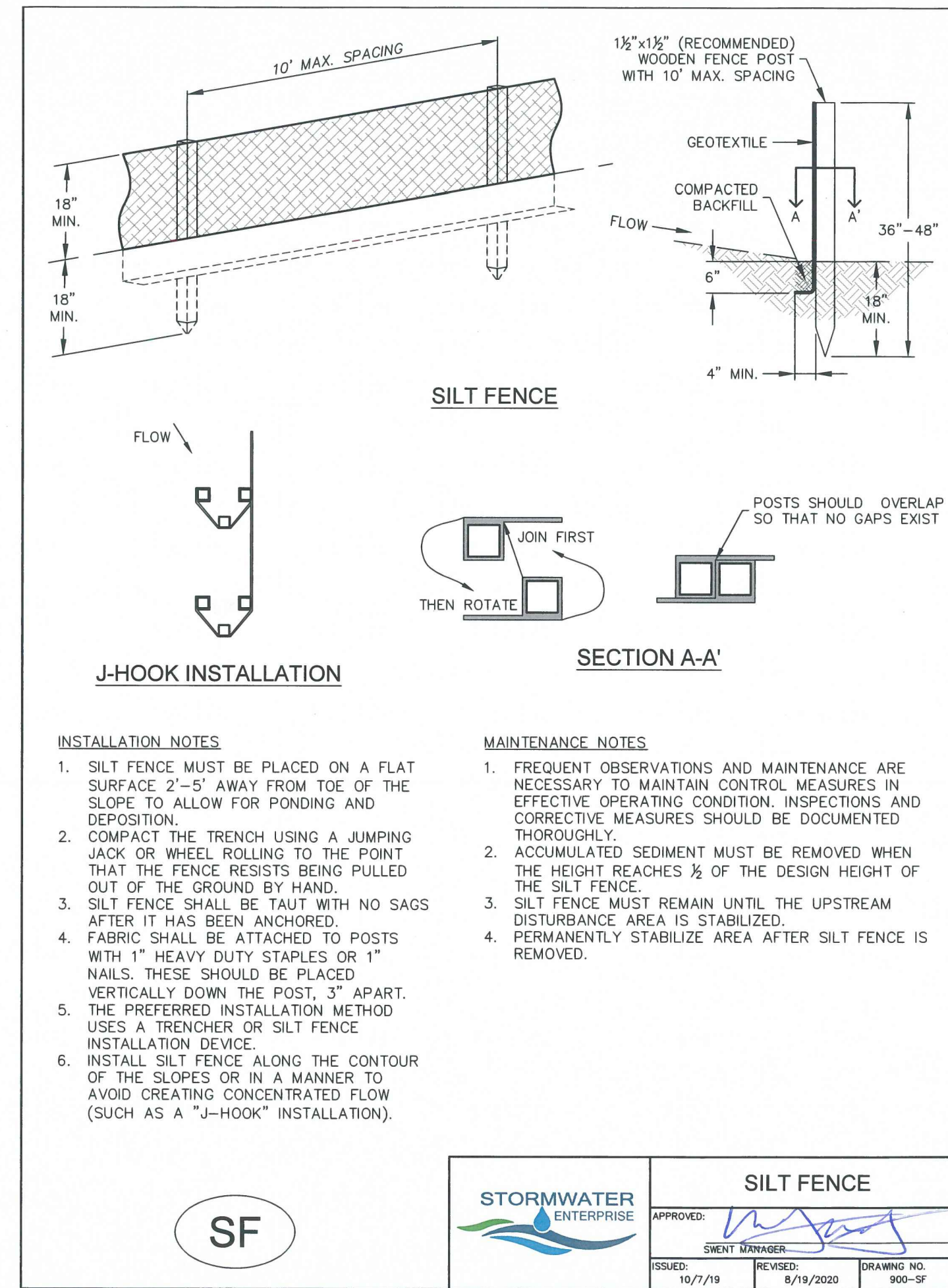
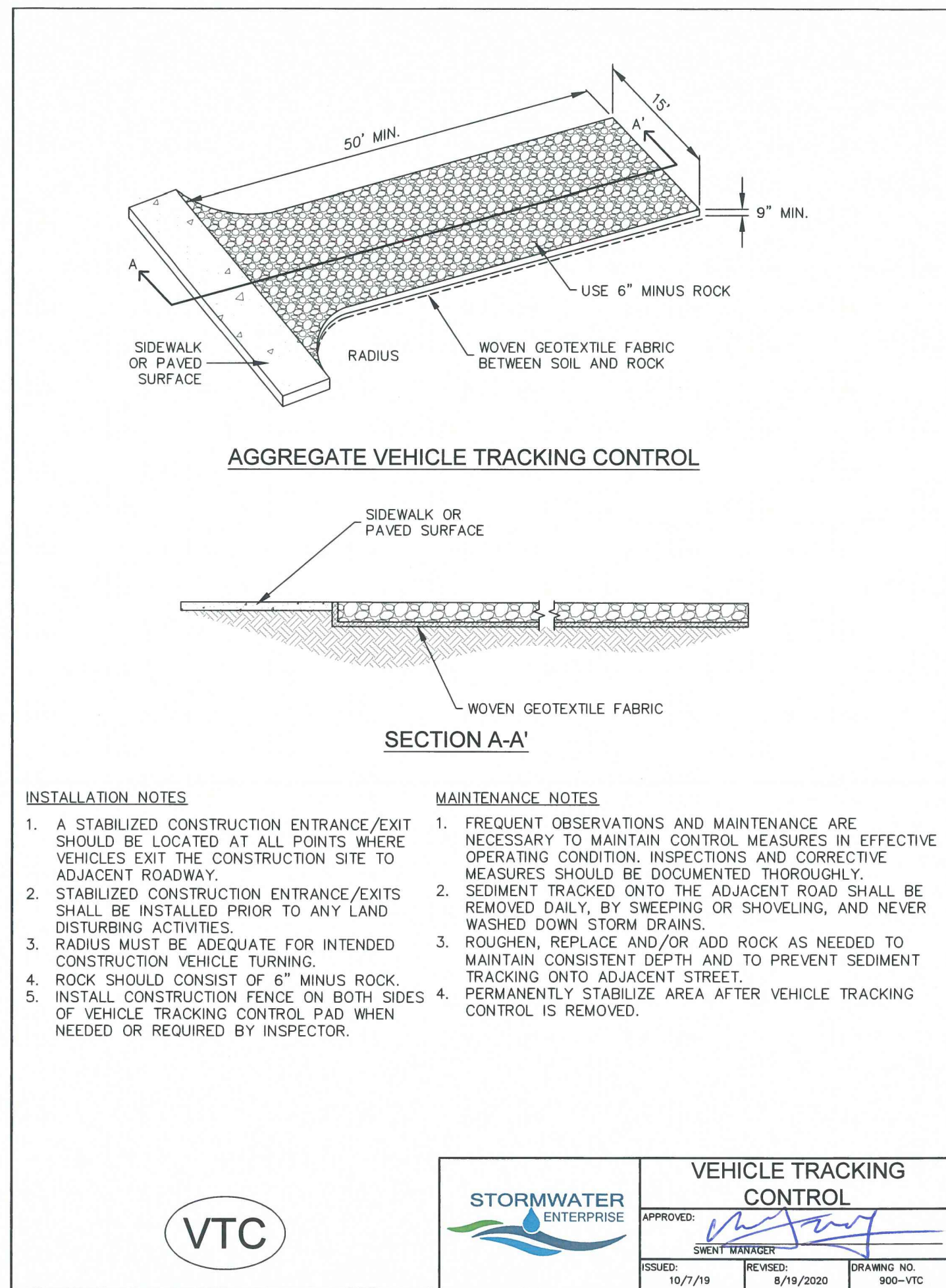
*NOTE: CONTRACTOR MAY NEED EPC WORK IN THE ROW PERMIT FOR THE CONNECTION TO THE EXISTING ROAD.

FLOODPLAIN STATEMENT

NO PORTION OF THE SUBJECT PROPERTY IS LOCATED WITHIN FEMA DESIGNATED SPECIAL FLOOD HAZARD AREA (SFHA'S) AS INDICATED ON THE FLOOD INSURANCE RATE MAP (FIRM) FOR EL PASO COUNTY, COLORADO AND INCORPORATED AREAS - MAP NUMBER 08041C0333G, EFFECTIVE DECEMBER 7, 2018.

MAP NOTES

- BOUNDARY BEARINGS AND DISTANCES SHOWN ON THIS MAP ARE RELATIVE TO A LINE BEGINNING AT THE MOST SOUTHWEST CORNER OF LOT 4, BLOCK 2, PAWNEE RANCHEROS FILING NO.1 WITH BEARING N 29°53'01" E, OF THE PUBLIC RECORDS OF EL PASO COUNTY, COLORADO.
- THE EXISTING TOPOGRAPHY SHOWN ON THIS PLAN WAS PREPARED AND PROVIDED BY ALESSI AND ASSOCIATES, INC.
- ALL EXISTING UNDERGROUND UTILITIES SHOWN ON THIS MAP ARE FROM UTILITY MAIN RECORD MAPS AND UTILITY SERVICE LOCATION MAPS. THE LOCATION OF UTILITIES AS SHOWN ARE APPROXIMATE. ALL UTILITIES MAY NOT BE SHOWN OR MAY NOT HAVE BEEN LOCATED. BELOW GROUND UTILITY LOCATIONS WERE NOT PERFORMED.



MVE, INC.
ENGINEERS / SURVEYORS

1903 Library Street, Suite 200, Colorado Springs, CO 80909 719.635.5736

DESIGNED BY _____
DRAWN BY _____
AS-BUILTS BY _____
CHECKED BY _____

ST. JOHN THE BAPTIST
ORTHODOX CHURCH

GRADING & EROSION
CONTROL PLAN
DETAIL SHEET

C1.3 MVE PROJECT 61200
MVE DRAWING GEC-ED

September 8, 2023
SHEET 3 OF 3