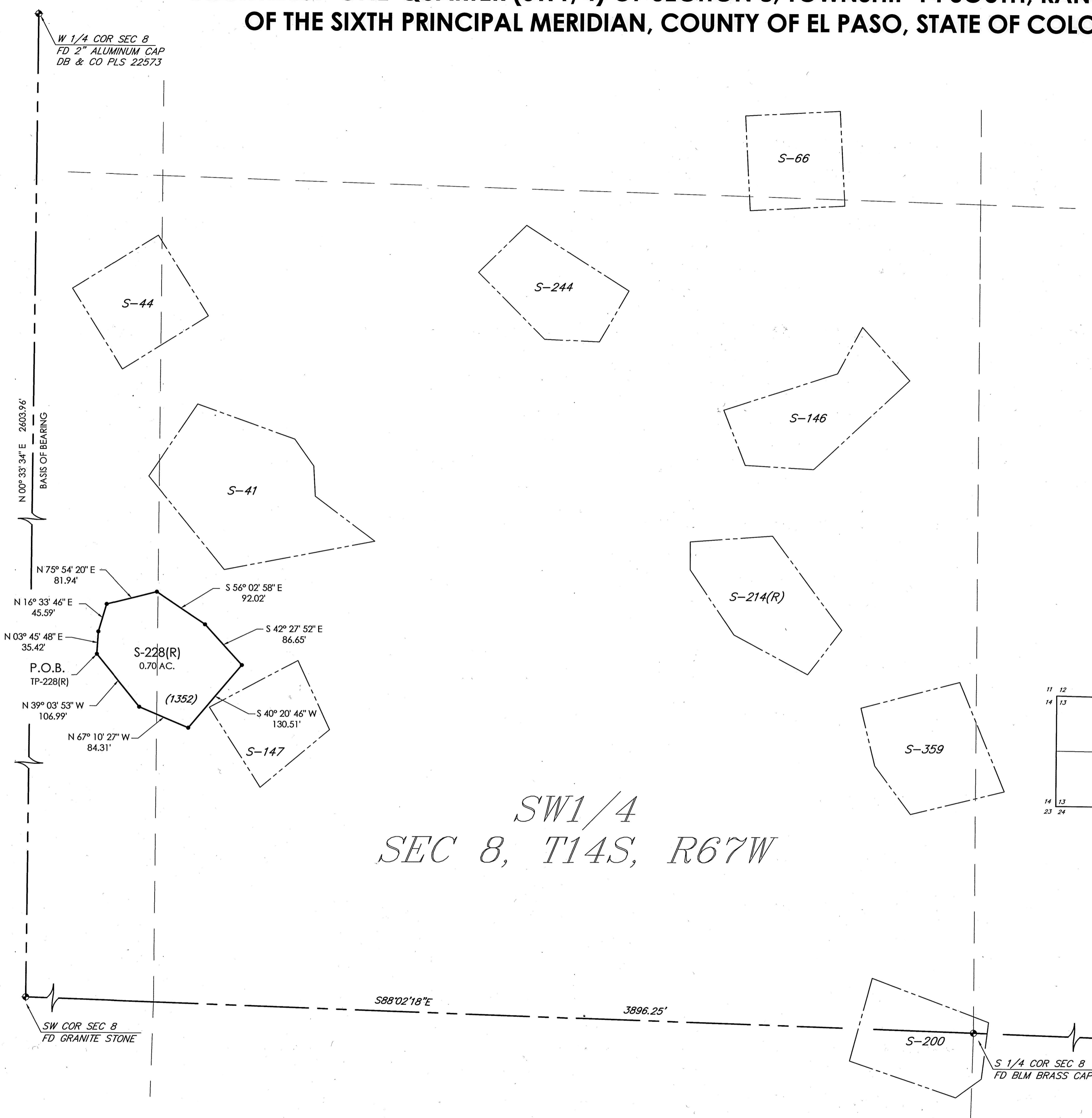
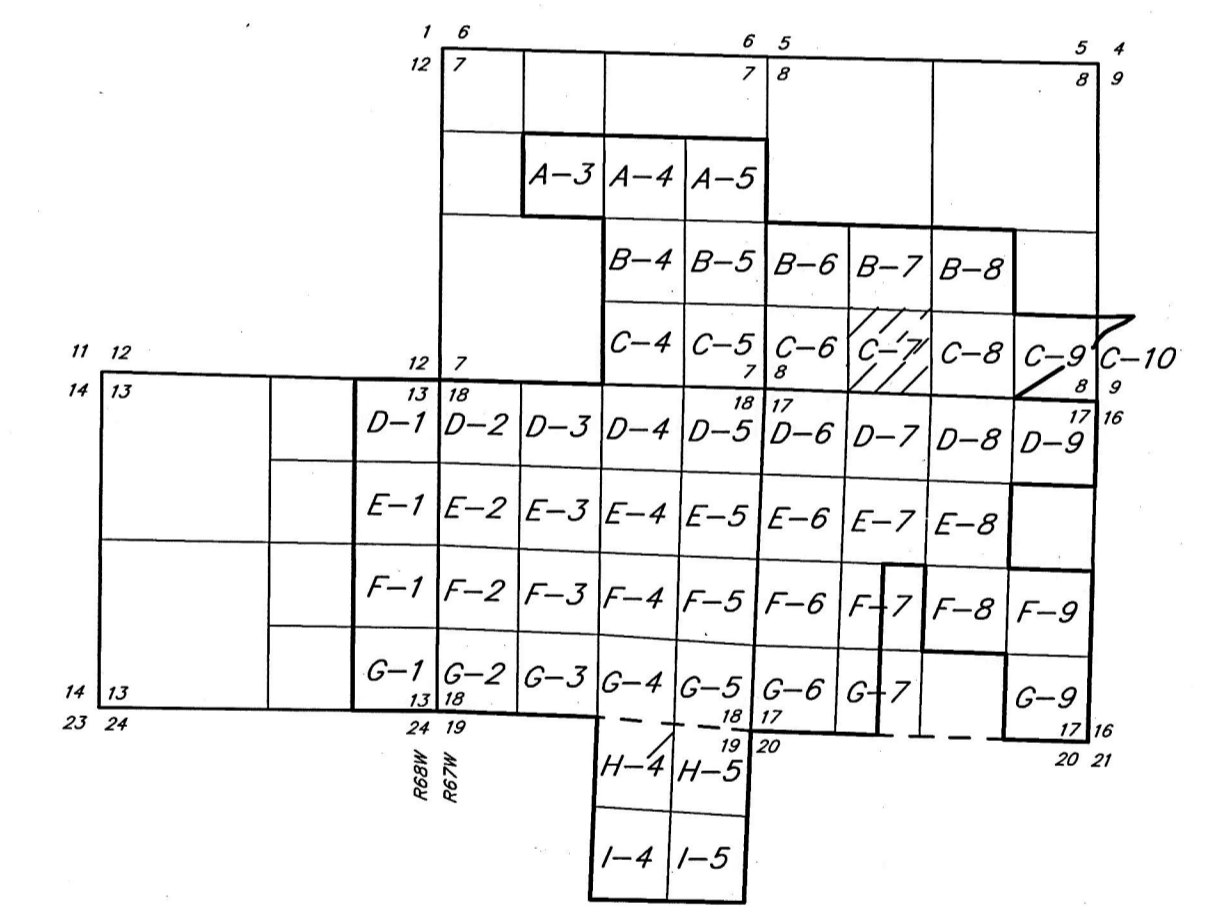
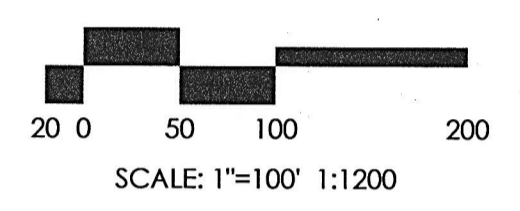
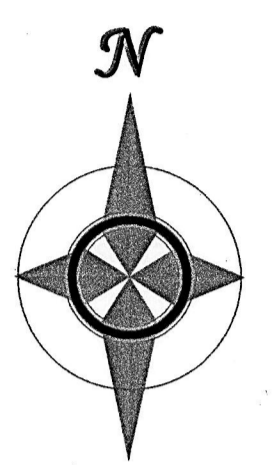


SITE S-228(R)

SITE ADDITION TO CRYSTAL PARK SUBDIVISION NO. 2, A PORTION OF THE
SOUTHWEST ONE-QUARTER (SW1/4) OF SECTION 8, TOWNSHIP 14 SOUTH, RANGE 67 WEST
OF THE SIXTH PRINCIPAL MERIDIAN, COUNTY OF EL PASO, STATE OF COLORADO



*SW1/4
SEC 8, T14S, R67W*



SHEET INDEX

PROPERTY CORNER LEGEND

● = ALL PROPERTY CORNERS ARE SET
REBAR AND ORANGE CAP STAMPED "TRAMPART
PLS 38560" UNLESS OTHERWISE DESIGNATED.

PROPERTY ADDRESS

(1352) SUN VALLEY LANE

TABLE OF SITE LOCATION TIES

TIE POINT	FROM:	TO:	BEARING	DISTANCE
TP-228(R)	SWc, Sec 8-14-67	S-228(R)	N 67° 17' 55" E	1307.71'

SHEET INDEX NO. C-7
SHEET 2 OF 2

MONUMENT VALLEY ENGINEERS INC.
** ENGINEERS ** SURVEYORS **
1911 LELARAY ST., COLORADO SPRINGS, COLORADO 80909
(719) 635-5736

SITE S-228(R)

SCALE 1" = 100'	DRAWN BY CCC	DWG. NO. 40222002
DATE 12/21/2020	CHECKED BY	JOB NO. 40222