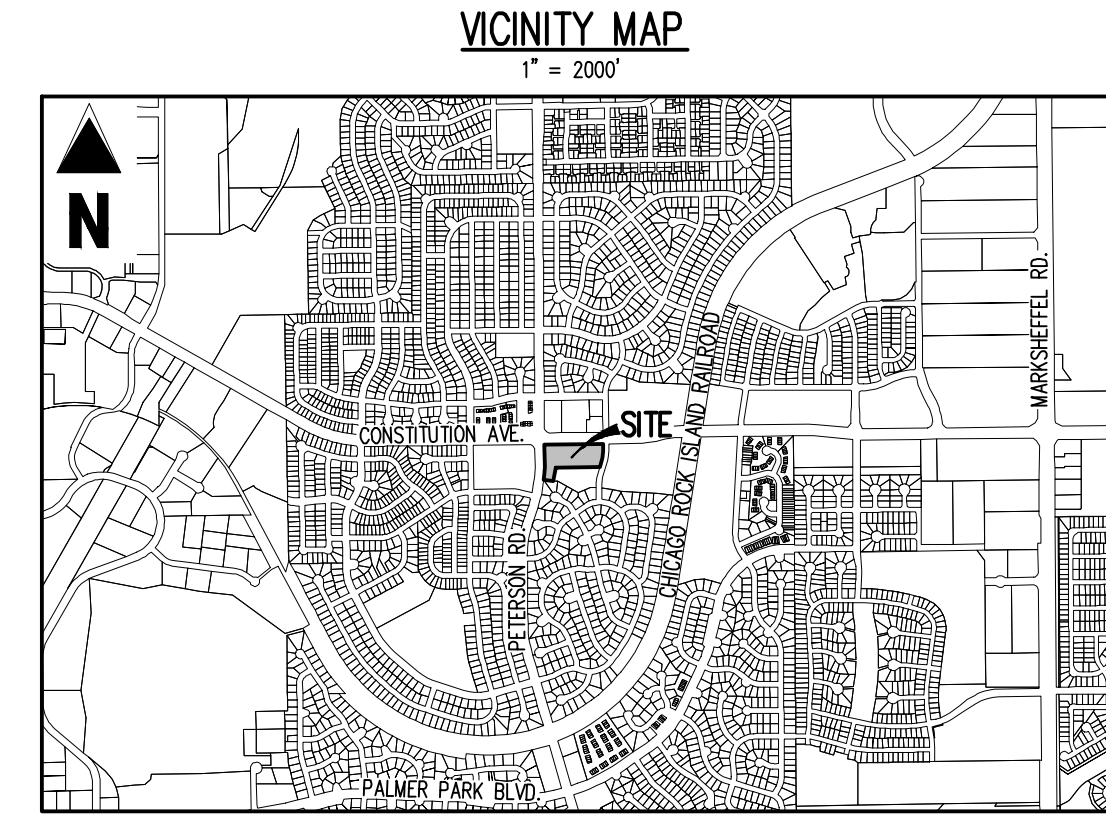
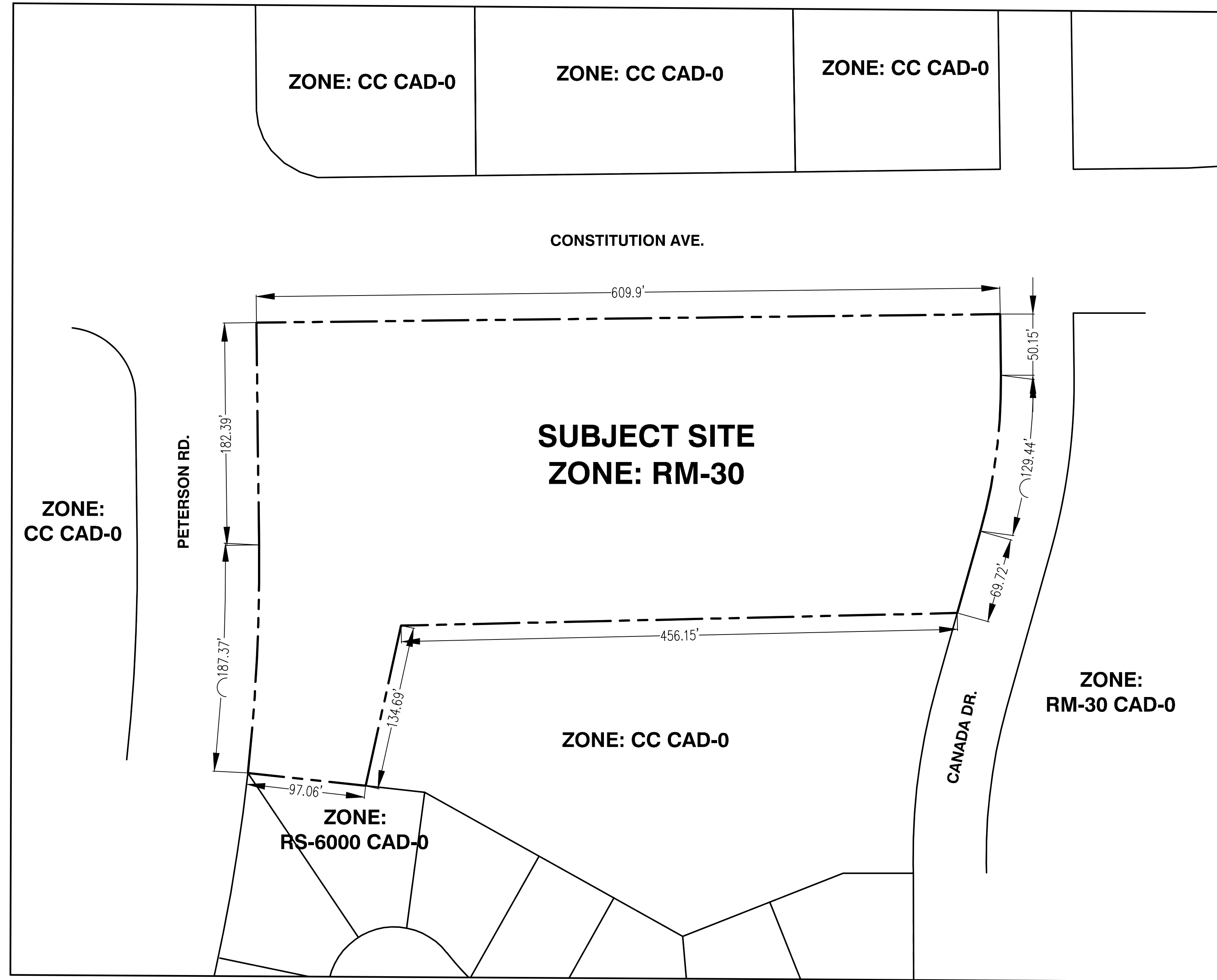
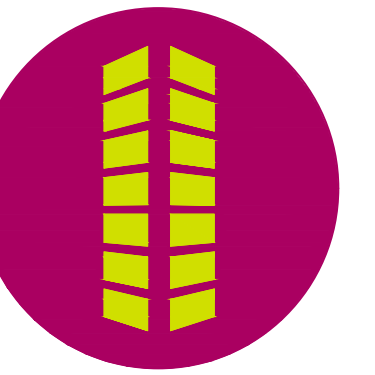


Unresolved version 5 comment from the letter intent:  
 Per version 5 comments, please change title to alternative landscape plans

# LANDSCAPE PLANS

**PRELIMINARY**  
 NOT FOR BIDDING  
 NOT FOR CONSTRUCTION

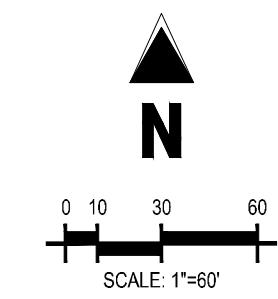
**COPYRIGHT**  
 THESE PLANS ARE AN INSTRUMENT OF SERVICE AND ARE THE PROPERTY OF GALLOWAY, AND MAY NOT BE DUPLICATED, DISCLOSED, OR REPRODUCED WITHOUT THE WRITTEN CONSENT OF GALLOWAY. COPYRIGHTS AND INFINGEMENTS WILL BE ENFORCED AND PROSECUTED.



ZONE MAP

**CAUTION**  
 UTILITIES EXIST WITHIN CONSTRUCTION LIMITS. CONTRACTOR IS RESPONSIBLE FOR IDENTIFYING THEIR LOCATION PRIOR TO CONSTRUCTION.

SCALE: 1" = 60'-0"



6855 CONSTITUTION AVE. STORAGE SITE  
 INDUSTRIAL DEVELOPMENT  
 REZONE PACKAGE  
 FOR JOHNSON DEVELOPMENT ASSOCIATES  
 LOT 1 OF THE EIGHT LINE SUBDIVISION  
 COLORADO SPRINGS, CO 80916

#	Date	Issue / Description	Init.

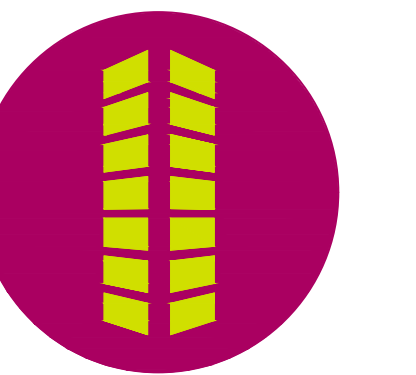
Project No: JDA000002.20  
 Drawn By: JRW  
 Checked By:  
 Date: 04/22/2022  
**LANDSCAPE COVER SHEET**



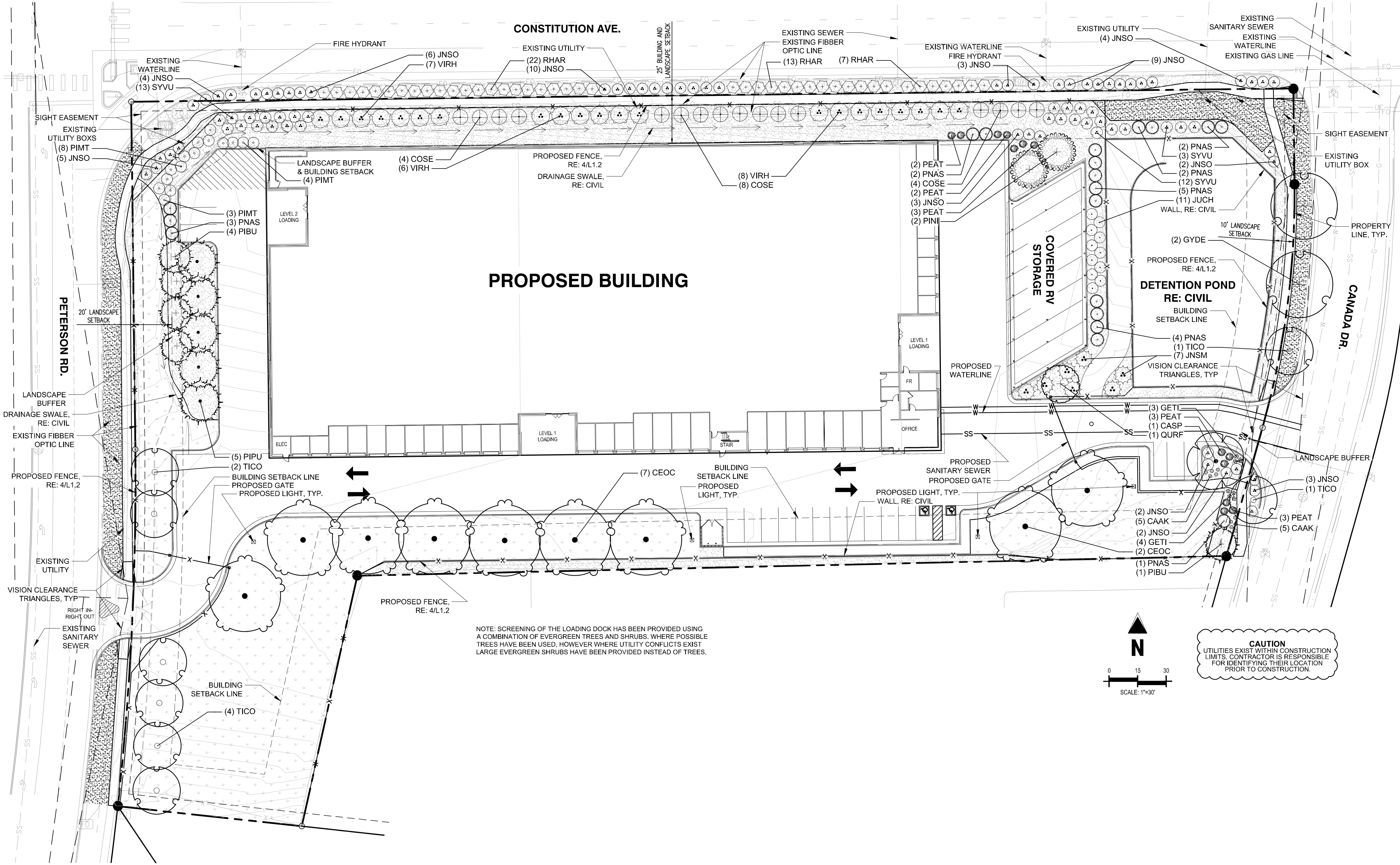
**L1.0**  
 Sheet 4 of 20

**PRELIMINARY**  
NOT FOR BIDDING  
NOT FOR CONSTRUCTION

**COPYRIGHT**  
THESE PLANS ARE AN INSTRUMENT OF SERVICE AND ARE THE PROPERTY OF GALLOWAY, AND MAY NOT BE DUPLICATED, DISCLOSED, OR REPRODUCED WITHOUT THE WRITTEN CONSENT OF GALLOWAY. COPYRIGHTS AND INFRINGEMENTS WILL BE ENFORCED AND PROSECUTED.



6855 CONSTITUTION AVE. STORAGE SITE  
INDUSTRIAL DEVELOPMENT  
REZONE PACKAGE  
FOR JOHNSON DEVELOPMENT ASSOCIATES  
LOT 1 OF THE EIGHT LINE SUBDIVISION  
COLORADO SPRINGS, CO 80916



NOTE: SCREENING OF THE LOADING DOCK HAS BEEN PROVIDED USING A COMBINATION OF EVERGREEN TREES AND SHRUBS. WHERE POSSIBLE TREES HAVE BEEN USED, HOWEVER WHERE UTILITY CONFLICTS EXIST LARGE EVERGREEN SHRUBS HAVE BEEN PROVIDED INSTEAD OF TREES.

**PLANT LEGEND**

DECIDUOUS TREES	COMMON NAME
[Symbol]	NORTHERN CATALPA
[Symbol]	COMMON HACKBERRY
[Symbol]	KENTUCKY COFFEETREE 'ESPRESSO'
[Symbol]	COLUMNAR ENGLISH OAK
[Symbol]	LITTLELEAF LINDEN
[Symbol]	COLORADO SPRUCE
[Symbol]	LACEBARK PINE
[Symbol]	AUSTRIAN PINE
[Symbol]	ARNOLD SENTINEL AUSTRIAN PINE
[Symbol]	BLUE POINT JUNIPER
[Symbol]	BAYLEY'S RED TWIG DOGWOOD
[Symbol]	ROYAL GOLD WOODWAXEN
[Symbol]	RUSSIAN SAGE
[Symbol]	GRO-LOW FRAGRANT SUMAC
[Symbol]	COMMON LILAC
[Symbol]	ALLEGHANY LANTANAPHYLLUM VIBURNUM
[Symbol]	BUFFALO JUNIPER
[Symbol]	CALGARY CARPET JUNIPER
[Symbol]	TANNENBAUM MUGO PINE
[Symbol]	KARL FOERSTER FEATHER REED GRASS
[Symbol]	EL PASO LOW GROW SEED MIX
[Symbol]	RTF (RHIZOMATOUS TALL FESCUE)

**LANDSCAPE MATERIALS**

SYMBOL	LANDSCAPE DESCRIPTION
[Symbol]	ROLLED TOP STEEL EDGER 1/8" THICK AND 6" DEEP
SYMBOL	LANDSCAPE DESCRIPTION
[Symbol]	2"-4" ANGULAR ROCK MULCH - 4" DEEP COLOR: TAN/GRAY WITH WOOD MULCH RING AROUND ALL PLANT MATERIAL, SEE PLANTING NOTES & DETAILS

**General Landscape Requirements**

Total Site Area	Req. Landscape Area (5%)	Provd. Landscape Area	Trees Req. 1/500sf	Trees Provd.
161,885	8,094	59503	16	16

**Street Tree Req.**

Street	Classification	Tree Requirements	Length	Total Trees Req.	Min. % of Evergreen Trees Req. (30%)	Deciduous Trees Provd.	Evergreen Trees Provd.	Total Trees Provd.	Shrubs Req.*	Shrubs Provd.*
Constitution Ave.	Principle Arterial	1 tree / 20'	510	26	9	0	9	9	170	170
Peterson Rd.	Minor Arterial	1 tree / 25'	290	12	4	6	6	12	0	0
Canada Dr.	Non-Arterial	1 tree / 30'	167.3	6	2	4	2	6	0	0

\*Due to the presence and locations of exiting utilities the required number of trees can not be planted. The applicant requests that these trees be replaced with shrubs at a rate of 10 shrubs to 1 tree.

\*\*Due to the presence and locations of exiting utilities the applicant requests that some trees and shrubs be allowed to be planted behind the landscape buffer line (but still visible from the ROW).

**Parking Landscape Requirements**

Total Parking	Trees Req. (1/15 spots)	Trees Provd.
19	1	1

**Landscape Buffer Requirements**

Length	Total Trees Req. (1/25')	Min. % of Evergreen Trees Req. (30%)	Deciduous Trees Provd.	Evergreen Trees Provd.	Total Trees Provd.
Multi-family buffer	167.3	7	2	7	7

#	Date	Issue / Description	Init.

Project No: JDA00002.20  
Drawn By: JRW  
Checked By:  
Date: 04/22/2022

LANDSCAPE PLAN



Know what's below.  
Call before you dig.

## PLANT SCHEDULE

DECIDUOUS TREES		CODE	QTY	COMMON NAME	BOTANICAL NAME	CONT.	CAL / SIZE	HT. X SPD.	WATER USE	LIGHT REQ.
	CASP	1	NORTHERN CATALPA	CATALPA SPECIOSA	B&B	2" CAL	50 X30'	LOW	SUN	
	CEOC	9	COMMON HACKBERRY	CELTIS OCCIDENTALIS	B&B	2" CAL	60 X40'	LOW	SUN/PART SHADE	
	GYDE	2	KENTUCKY COFFEETREE 'ESPRESSO'	GYMNOCLADUS DIOICA 'ESPRESSO'	B&B	2" CAL	50 X35'	LOW	SUN	
	QURF	1	COLUMNAR ENGLISH OAK	QUERCUS ROBUR 'FASTIGIATA' TM	B&B	2" CAL	40 X20'	MODERATE	SUN	
	TICO	8	LITTLELEAF LINDEN	TILIA CORDATA	B&B	2" CAL	40 X30'	MODERATE	SUN/PART SHADE	
EVERGREEN TREES		CODE	QTY	COMMON NAME	BOTANICAL NAME	CONT.	CAL / SIZE	HT. X SPD.	WATER USE	LIGHT REQ.
	PIPU	5	COLORADO SPRUCE	PICEA PUNGENS	B&B	6" HT	60 X25'	LOW	SUN/PART SHADE	
	PIBU	5	LACEBARK PINE	PINUS BUNGEANA	B&B	6" HT	30 X20'	LOW	SUN	
	PINI	2	AUSTRIAN PINE	PINUS NIGRA	B&B	6" HT	50 X20'	LOW	SUN/PART SHADE	
	PNAS	19	ARNOLD SENTINEL AUSTRIAN PINE	PINUS NIGRA 'ARNOLD SENTINEL'	B&B	6" HT	25 X7'	LOW	SUN/PART SHADE	
UPRIGHT JUNIPERS		CODE	QTY	COMMON NAME	BOTANICAL NAME	CONT.	HT. X SPD.	WATER USE	LIGHT REQ.	
	JUCH	11	BLUE POINT JUNIPER	JUNIPERUS CHINENSIS 'BLUE POINT'	#5 CONT.	12'X6'	VERY LOW	SUN/PART SHADE		
DECIDUOUS SHRUBS		CODE	QTY	COMMON NAME	BOTANICAL NAME	CONT.	HT. X SPD.	WATER USE	LIGHT REQ.	
	COSE	16	BAYLEY'S RED TWIG DOGWOOD	CORNUS SERICEA 'BAILEY'	#5 CONT.	8'X8'	LOW	SUN/PART SHADE		
	GETI	7	ROYAL GOLD WOADWAXEN	GENISTA TINCTORIA 'ROYAL GOLD'	#5 CONT.	2'X2'	VERY LOW	SUN		
	PEAT	13	RUSSIAN SAGE	PEROVSKIA TRIPLICIFOLIA	#5 CONT.	4'X4'	VERY LOW	SUN		
	RHAR	42	GRO-LOW FRAGRANT SUMAC	RHUS AROMATICA 'GRO-LOW'	#5 CONT.	3'X8'	LOW	SUN		
	SYVU	28	COMMON LILAC	SYRINGA VULGARIS	#5 CONT.	6'X6'	LOW	SUN/PART SHADE		
	VI RH	21	ALLEGHANY LANTANAPHYLLUM VIBURNUM	VIBURNUM X RHYTIDOPHYLLOIDES 'ALLEGHANY'	#5 CONT.	10'X10'	MODERATE	SUN/PART SHADE		
EVERGREEN SHRUBS		CODE	QTY	COMMON NAME	BOTANICAL NAME	CONT.	HT. X SPD.	WATER USE	LIGHT REQ.	
	JNSO	53	BUFFALO JUNIPER	JUNIPERUS SABINA 'BUFFALO'	#5 CONT.	1'X6'	VERY LOW	SUN/PART SHADE		
	JNSM	7	CALGARY CARPET JUNIPER	JUNIPERUS SABINA 'MONNA'	#5 CONT.	9'X10'	VERY LOW	SUN/PART SHADE		
	PIMT	15	TANNENBAUM MUGO PINE	PINUS MUGO 'TANNENBAUM'	#5 CONT.	15'X6'	LOW	SUN		
ORNAMENTAL GRASSES		CODE	QTY	COMMON NAME	BOTANICAL NAME	CONT.	HT. X SPD.	WATER USE	LIGHT REQ.	
	CAAK	10	KARL FOERSTER FEATHER REED GRASS	CALAMAGROSTIS X ACUTIFLORA 'KARL FOERSTER'	#1 CONT.	5'X2'	LOW	SUN		
SOD/SEED		CODE	QTY	COMMON NAME	BOTANICAL NAME	TYPE				
	SEED	27,874 SF	EL PASO LOW GROW SEED MIX	EL PASO LOW GROW SEED MIX	SEED					
	SOD	5,754 SF	RTF (RHIZOMATOUS TALL FESCUE)	FESCUE SOD	SOD					

## LANDSCAPE MATERIALS

SYMBOL	LANDSCAPE DESCRIPTION	QTY	DETAIL
	L-01 ROLLED TOP STEEL EDGER 1/8" THICK AND 6" DEEP	293 LF	SEE NOTES
SYMBOL	LANDSCAPE DESCRIPTION	QTY	DETAIL
	L-03 2"-4" ANGULAR ROCK MULCH - 4" DEEP COLOR: TAN/GRAY WITH WOOD MULCH RING AROUND ALL PLANT MATERIAL, SEE PLANTING NOTES & DETAILS	293.7 CY	SEE NOTES

## PLANTING NOTES

- GENERAL**
- ALL WORK SHALL CONFORM TO ALL APPLICABLE STATE AND LOCAL CODES, STANDARDS, AND SPECIFICATIONS.
  - LANDSCAPE DESIGN IS DIAGRAMMATIC IN NATURE. THE CONTRACTOR SHALL BE RESPONSIBLE FOR HIS OWN TAKEOFFS AND QUANTITY CALCULATIONS. IN THE EVENT OF A DISCREPANCY BETWEEN THE PLAN AND THE LANDSCAPE LEGEND, THE PLANT QUANTITY AS SHOWN ON THE PLAN SHALL TAKE PRECEDENCE AND NOTIFY THE LANDSCAPE ARCHITECT OF THESE DISCREPANCIES. MINOR ADJUSTMENTS TO THE LANDSCAPE MATERIAL AND LOCATIONS MAY BE PROPOSED FOR CITY CONSIDERATION AT THE CONSTRUCTION DOCUMENT STAGE TO RESPOND TO MARKET AND FIELD CONDITIONS. HOWEVER, THERE SHALL BE NO REDUCTION IN THE NUMBER AND SIZE OF MATERIALS.
  - CONTRACTOR SHALL MAKE HIMSELF AWARE OF THE LOCATIONS OF EXISTING AND PROPOSED UTILITIES, AND SHALL BE RESPONSIBLE FOR ANY DAMAGE TO THE UTILITIES AND/OR ANY INJURY TO ANY PERSON. THIS DRAWING IS PART OF A COMPLETE SET OF CONTRACT DOCUMENTS. UNDER NO CIRCUMSTANCES SHOULD THIS PLAN BE USED FOR CONSTRUCTION PURPOSES WITHOUT EXAMINING ACTUAL LOCATIONS OF UTILITIES ON SITE AND REVIEW ALL RELATED PLANS AND DOCUMENTS.
  - ALL UTILITY EASEMENTS SHALL REMAIN UNOBSTRUCTED AND FULLY ACCESSIBLE ALONG THEIR ENTIRE LENGTH FOR MAINTENANCE EQUIPMENT.
  - THE CONTRACTOR SHALL TAKE EXTREME CARE NOT TO DAMAGE ANY EXISTING PLANTS INDICATED AS "TO REMAIN". ANY SUCH PLANTS DAMAGED BY THE CONTRACTOR SHALL BE REPLACED WITH THE SAME SPECIES, SIZE, AND QUANTITY AT THE CONTRACTOR'S OWN EXPENSE, AND AS ACCEPTABLE TO THE OWNER. REFER TO THE "TREE PROTECTION NOTES ON THE PLANS (AS APPLICABLE).
  - LANDSCAPE CONTRACTOR SHALL EXAMINE THE SITE CONDITIONS UNDER WHICH THE WORK IS TO BE PERFORMED AND NOTIFY THE GENERAL CONTRACTOR IN WRITING OF UNSATISFACTORY CONDITIONS. IF SITE CONDITIONS OR PLANT AVAILABILITY REQUIRE CHANGES TO THE PLAN, THEN AN APPROVAL WILL BE OBTAINED FROM THE CITY. DO NOT PROCEED UNTIL CONDITIONS HAVE BEEN CORRECTED.
  - ALL CONSTRUCTION DEBRIS AND MATERIAL SHALL BE REMOVED AND CLEANED OUT PRIOR TO INSTALLATION OF TOPSOIL, TREES, SHRUBS, AND TURF.
  - FOR ALL INFORMATION ON SURFACE MATERIAL OF WALKS, DRIVES, AND PARKING LOTS, SEE THE SITE PLAN. SEE PHOTOMETRIC PLAN FOR FREE STANDING LIGHTING INFORMATION.
  - THE LANDSCAPE CONTRACTOR SHALL NOTIFY THE LANDSCAPE ARCHITECT ONE WEEK PRIOR TO BEGINNING CONSTRUCTION.
  - WINTER WATERING SHALL BE AT THE EXPENSE OF THE CONTRACTOR UNTIL SUCH TIME AS FINAL ACCEPTANCE IS RECEIVED.
  - ALL LANDSCAPE CONSTRUCTION PRACTICES, WORKMANSHIP, AND ETHICS SHALL BE IN ACCORDANCE WITH INDUSTRY STANDARDS SET FORTH IN THE CONTRACTORS HANDBOOK PUBLISHED BY THE COLORADO LANDSCAPE CONTRACTORS ASSOCIATION.
  - LANDSCAPE AND IRRIGATION WORK SHALL BE COMPLETED PRIOR TO THE ISSUANCE OF THE FINAL CERTIFICATE OF OCCUPANCY.
- MULCHING**
- AFTER ALL PLANTING IS COMPLETE, THE CONTRACTOR SHALL INSTALL A MINIMUM 4" THICK LAYER OF MULCH AS SPECIFIED IN THE SCHEDULE. INSTALL A 4" THICK RING OF DOUBLE SHREDED CEDAR BARK MULCH AROUND ALL PLANT MATERIAL IN ROCK MULCH BEDS WHERE LANDSCAPING IS SHOWN ON THE PLANS. WOOD MULCH RING SIZE SHALL BE THE CONTAINER SIZE OF THE SHRUBS, PERENNIALS, AND ORNAMENTAL GRASSES. TREE RING SIZE SHALL BE GREEN INDUSTRIES OF COLORADO INDUSTRY STANDARD WIDTH.
  - ALL MULCH SHALL BE HARVESTED IN A SUSTAINABLE MANNER FROM A LOCAL SOURCE.
  - INSTALL DEWITT PRO-5 WEED BARRIER FABRIC UNDER ALL ROCK MULCH SHRUB BEDS SPECIFIED ON THE PLANS ONLY. NO LANDSCAPE FABRIC SHALL BE USED IN WOOD MULCH AREAS. NO PLASTIC WEED BARRIERS SHALL BE SPECIFIED.
  - ABSOLUTELY NO EXPOSED GROUND SHALL BE LEFT SHOWING ANYWHERE ON THE PROJECT AFTER MULCH HAS BEEN INSTALLED.
  - ALL PLANTING AREAS WITH LESS THAN A 4:1 GRADIENT SHALL RECEIVE A LAYER OF MULCH. TYPE AND DEPTH PER PLANS. SUBMIT 1 CUBIC FOOT SAMPLE OF MULCH (ONE SAMPLE PER TYPE) TO LANDSCAPE ARCHITECT FOR APPROVAL PRIOR TO INSTALLATION. THE MULCH SHALL BE SPREAD EVENLY THROUGHOUT ALL PLANTING AREAS EXCEPT SLOPES 4:1 OR STEEPER, OR AS OTHERWISE DENOTED ON THE PLAN. ABSOLUTELY NO EXPOSED GROUND SHALL REMAIN IN AREAS TO RECEIVE MULCH AFTER MULCH HAS BEEN INSTALLED.
  - ALL PLANTING AREAS ON SLOPES OVER 4:1 SHALL RECEIVE COCONUT FIBER EROSION CONTROL NETTING FROM ROLLS. NETTING SHALL BE #OT-125, AS MANUFACTURED BY NORTH AMERICAN GREEN (OR EQUAL). INSTALL AND STAKE PER MANUFACTURER'S SPECIFICATIONS. SEE ALSO THE CIVIL ENGINEER'S EROSION CONTROL PLAN.
- UTILITY NOTES**
- THE LANDSCAPE CONTRACTOR IS REQUIRED TO CONTACT THE COUNTY PUBLIC WORKS DEPARTMENT, AND ANY OTHER PUBLIC OR PRIVATE AGENCY NECESSARY FOR UTILITY LOCATION PRIOR TO ANY CONSTRUCTION.
  - THIS DRAWING IS A PART OF A COMPLETE SET OF BID DOCUMENTS, SPECIFICATIONS, ADDITIONAL DRAWINGS, AND EXHIBITS. UNDER NO CIRCUMSTANCES SHOULD THESE PLANS BE USED FOR CONSTRUCTION PURPOSES WITHOUT EXAMINING ACTUAL LOCATIONS OF UTILITIES ON SITE, AND REVIEWING ALL RELATED DOCUMENTS.
  - THE LOCATION OF THE ALL UNDERGROUND UTILITIES ARE LOCATED ON THE ENGINEERING DRAWINGS FOR THIS PROJECT. THE MOST CURRENT REVISION IS HERE IN MADE PART OF THIS DOCUMENT. UNDERGROUND UTILITIES EXIST THROUGHOUT THIS SITE AND MUST BE LOCATED PRIOR TO ANY CONSTRUCTION ACTIVITY. WHERE UNDERGROUND UTILITIES EXIST, FIELD ADJUSTMENT MAY BE NECESSARY AND MUST BE APPROVED BY A REPRESENTATIVE OF THE OWNER. NEITHER THE OWNER NOR THE LANDSCAPE ARCHITECT ASSUMES ANY RESPONSIBILITY WHATSOEVER, IN RESPECT TO THE CONTRACTORS ACCURACY IN LOCATING THE INDICATED PLANT MATERIAL, AND UNDER NO CIRCUMSTANCES SHOULD THESE PLANS BE USED WITHOUT REFERENCING THE ABOVE MENTIONED DOCUMENTS.
- FINISH GRADING AND SOIL PREPARATION**
- CONTRACTOR SHALL CONSTRUCT AND MAINTAIN FINISH GRADES AS RECOMMENDED BY THE GEOTECHNICAL REPORT. ALL LANDSCAPE AREAS SHALL HAVE POSITIVE DRAINAGE AWAY FROM STRUCTURES AT THE MINIMUM SLOPE SPECIFIED IN THE REPORT. AREAS OF POTENTIAL PONDING SHALL BE REGRADED TO BLEND IN WITH THE SURROUNDING GRADES AND ELIMINATE PONDING POTENTIAL. SHOULD ANY CONFLICTS AND/OR DISCREPANCIES ARISE BETWEEN THE GEOTECHNICAL REPORT, THE GRADING PLANS, THESE NOTES, AND ACTUAL CONDITIONS, THE CONTRACTOR SHALL IMMEDIATELY BRING SUCH ITEMS TO THE ATTENTION OF THE LANDSCAPE ARCHITECT AND OWNER.
  - AFTER FINISH GRADES HAVE BEEN ESTABLISHED, IT IS RECOMMENDED THAT THE CONTRACTOR SHALL HAVE SOIL SAMPLES TESTED BY AN ESTABLISHED SOIL TESTING LABORATORY FOR THE FOLLOWING: GENERAL SOIL FERTILITY, PH, ORGANIC MATTER CONTENT, SALT (CEC), LIME, SODIUM ADSORPTION RATIO (SAR) AND BORON CONTENT. EACH SAMPLE SUBMITTED SHALL CONTAIN NO LESS THAN ONE QUART OF SOIL. CONTRACTOR SHALL ALSO SUBMIT THE PROJECT'S PLANT LIST TO THE LABORATORY ALONG WITH THE SOIL SAMPLES. THE SOIL REPORT PRODUCED BY THE LABORATORY SHALL CONTAIN RECOMMENDATIONS FOR THE FOLLOWING (AS APPROPRIATE): GENERAL SOIL PREPARATION AND BACKFILL MIXES, PRE-PLANT FERTILIZER APPLICATIONS, AND ANY OTHER SOIL RELATED ISSUES. THE REPORT SHALL ALSO PROVIDE A FERTILIZER PROGRAM FOR THE ESTABLISHMENT PERIOD AND FOR LONG-TERM MAINTENANCE.
  - THE CONTRACTOR SHALL RECOMMEND INSTALLATION OF SOIL AMENDMENTS AND FERTILIZERS PER THE SOILS REPORT FOR THE THE OWNER/OWNER'S REPRESENTATIVE CONSIDERATION.
  - AT A MINIMUM, ALL TOPSOIL SHALL BE AMENDED WITH NITROGEN STABILIZED ORGANIC AMENDMENT COMPOST AT A RATE OF 5.0 CUBIC YARDS AND AMMONIUM PHOSPHATE 16-20-0 AT A RATE OF 15 POUNDS PER THOUSAND SQUARE FEET OF LANDSCAPE AREA. COMPOST SHALL BE MECHANICALLY INTEGRATED INTO THE TOP 6" OF SOIL BY MEANS OF ROTOTILLING AFTER CROSS-RIPPING. GROUND COVER & PERENNIAL BED AREAS SHALL BE AMENDED AT A RATE OF 8 CUBIC FEET PER THOUSAND SQUARE FEET OF NITROGEN STABILIZED ORGANIC AMENDMENT AND 10 LBS. OF 12-12-12 FERTILIZER PER CU. YD., ROTOTILLED TO A DEPTH OF 6". NO MANURE OR ANIMAL-BASED PRODUCTS SHALL BE USED FOR ORGANIC AMENDMENTS.
- PLANTING**
- ALL DECIDUOUS TREES SHALL HAVE FULL, WELL-SHAPED HEADS/ALL EVERGREENS SHALL BE UNSHEARED AND FULL TO THE GROUND, UNLESS OTHERWISE SPECIFIED. TREES WITH CENTRAL LEADERS WILL NOT BE ACCEPTED IF LEADER IS DAMAGED OR REMOVED. PRUNE ALL DAMAGED TWIGS AFTER PLANTING.
  - ALL PLANTS WITHIN A SPECIES SHALL HAVE SIMILAR SIZE, AND SHALL BE OF A FORM TYPICAL FOR THE SPECIES. ANY PLANT DEEMED UNACCEPTABLE BY THE LANDSCAPE ARCHITECT SHALL BE IMMEDIATELY REMOVED FROM THE SITE AND SHALL BE REPLACED WITH AN ACCEPTABLE PLANT OF LIKE TYPE AND SIZE AT THE CONTRACTOR'S OWN EXPENSE. ANY PLANTS APPEARING TO BE UNHEALTHY, EVEN IF DETERMINED TO STILL BE ALIVE, SHALL NOT BE ACCEPTED. THE LANDSCAPE ARCHITECT SHALL BE THE SOLE JUDGE AS TO THE ACCEPTABILITY OF PLANT MATERIAL.

## IRRIGATION CONCEPT

- AN AUTOMATIC IRRIGATION SYSTEM SHALL BE INSTALLED AND OPERATIONAL BY THE TIME OF FINAL INSPECTION. THE ENTIRE IRRIGATION SYSTEM SHALL BE INSTALLED BY A QUALIFIED IRRIGATION CONTRACTOR.
- THE IRRIGATION SYSTEM WILL HAVE APPROPRIATE BACKFLOW PREVENTION DEVICES INSTALLED TO PREVENT CONTAMINATION OF THE WATER SOURCE IF APPLICABLE.
- ALL NON-TURF/SEED PLANTED AREAS WILL BE DRIP IRRIGATED. TURF SOD/SEED SHALL RECEIVE POP-UP SPRAY IRRIGATION FOR HEAD TO HEAD COVERAGE.
- ALL PLANTS SHARING SIMILAR HYDROZONE CHARACTERISTICS SHALL BE PLACED ON A VALVE DEDICATED TO PROVIDE THE NECESSARY WATER REQUIREMENTS SPECIFIC TO THAT HYDROZONE.
- THE IRRIGATION SYSTEM SHALL BE DESIGNED AND INSTALLED, TO THE MAXIMUM EXTENT POSSIBLE, TO CONSERVE WATER BY USING THE FOLLOWING DEVICES AND SYSTEMS: MATCHED PRECIPITATION RATE TECHNOLOGY ON ROTOR AND SPRAY HEADS (WHEREVER POSSIBLE), RAIN SENSORS, AND SMART MULTI-PROGRAM COMPUTERIZED IRRIGATION CONTROLLERS FEATURING SENSORY INPUT CAPABILITIES.

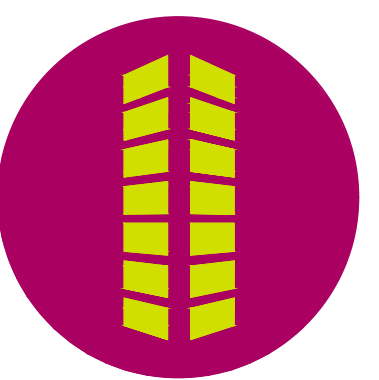
## LANDSCAPE GUARANTEE AND MAINTENANCE

- THE LANDSCAPE CONTRACTOR SHALL GUARANTEE ALL TREES, SHRUBS, PERENNIALS, SOD, SEEDED AREAS, AND IRRIGATION SYSTEMS FOR A PERIOD OF ONE YEAR FROM THE DATE OF THE OWNER'S ACCEPTANCE. THE CONTRACTOR SHALL REPLACE, AT HIS OWN EXPENSE, ANY PLANTS WHICH DIE IN THAT TIME, OR REPAIR ANY PORTIONS OF THE IRRIGATION SYSTEM WHICH OPERATE IMPROPERLY.
- THE LANDSCAPE CONTRACTOR SHALL MAINTAIN THE LANDSCAPE IN A NEAT, CLEAN, AND HEALTHY CONDITION FOR A PERIOD OF 90 DAYS. THIS SHALL INCLUDE PROPER PRUNING, MOWING AND AERATION OF LAWNS, WEEDING, REPLACEMENT OF MULCH, REMOVAL OF LITTER, AND THE APPROPRIATE WATERING OF ALL PLANTINGS. IRRIGATION SHALL BE MAINTAINED IN PROPER WORKING ORDER, WITH SCHEDULING ADJUSTMENTS BY SEASON AND TO MAXIMIZE WATER CONSERVATION. IF SITE OPENS DURING WINTER, TO AVOID FREEZE DAMAGE ON PLANTINGS, THE 90 DAYS SHOULD BEGIN AFTER ACCEPTANCE OF THE WORK.
- DURING THE LANDSCAPE MAINTENANCE PERIOD, THE LANDSCAPE CONTRACTOR SHALL MAINTAIN POSITIVE DRAINAGE AWAY FROM STRUCTURES IN ALL LANDSCAPE AREAS AT THE MINIMUM SLOPE SPECIFIED IN THE GEOTECHNICAL REPORT. LANDSCAPE AREAS WHICH SETTLE AND CREATE THE POTENTIAL FOR PONDING SHALL BE REPAIRED TO ELIMINATE PONDING POTENTIAL AND BLEND IN WITH THE SURROUNDING GRADES. SHOULD ANY CONFLICTS AND/OR DISCREPANCIES ARISE BETWEEN THE GEOTECHNICAL REPORT, THE GRADING PLANS, THESE NOTES, AND ACTUAL CONDITIONS, THE CONTRACTOR SHALL IMMEDIATELY BRING SUCH ITEMS TO THE ATTENTION OF THE LANDSCAPE ARCHITECT AND OWNER.

PRELIMINARY  
NOT FOR BIDDING  
NOT FOR CONSTRUCTION

**COPYRIGHT**

THESE PLANS ARE AN INSTRUMENT OF SERVICE AND ARE THE PROPERTY OF GALLOWAY, AND MAY NOT BE DUPLICATED, DISCLOSED, OR REPRODUCED WITHOUT THE WRITTEN CONSENT OF GALLOWAY. COPYRIGHTS AND INFRINGEMENTS WILL BE ENFORCED AND PROSECUTED.



6855 CONSTITUTION AVE. STORAGE SITE  
INDUSTRIAL DEVELOPMENT  
REZONE PACKAGE  
FOR JOHNSON DEVELOPMENT ASSOCIATES  
LOT 1 OF THE EIGHT LINE SUBDIVISION  
COLORADO SPRINGS, CO 80916

#	Date	Issue / Description	Init.

Project No: JDA00002.20  
 Drawn By: JRW  
 Checked By: \_\_\_\_\_  
 Date: 04/22/2022

LANDSCAPE NOTES

PRELIMINARY  
 NOT FOR BIDDING  
 NOT FOR CONSTRUCTION

**COPYRIGHT**  
 THESE PLANS ARE AN INSTRUMENT OF SERVICE AND ARE THE PROPERTY OF GALLOWAY, AND MAY NOT BE DUPLICATED, DISCLOSED, OR REPRODUCED WITHOUT THE WRITTEN CONSENT OF GALLOWAY. COPYRIGHTS AND INFRINGEMENTS WILL BE ENFORCED AND PROSECUTED.

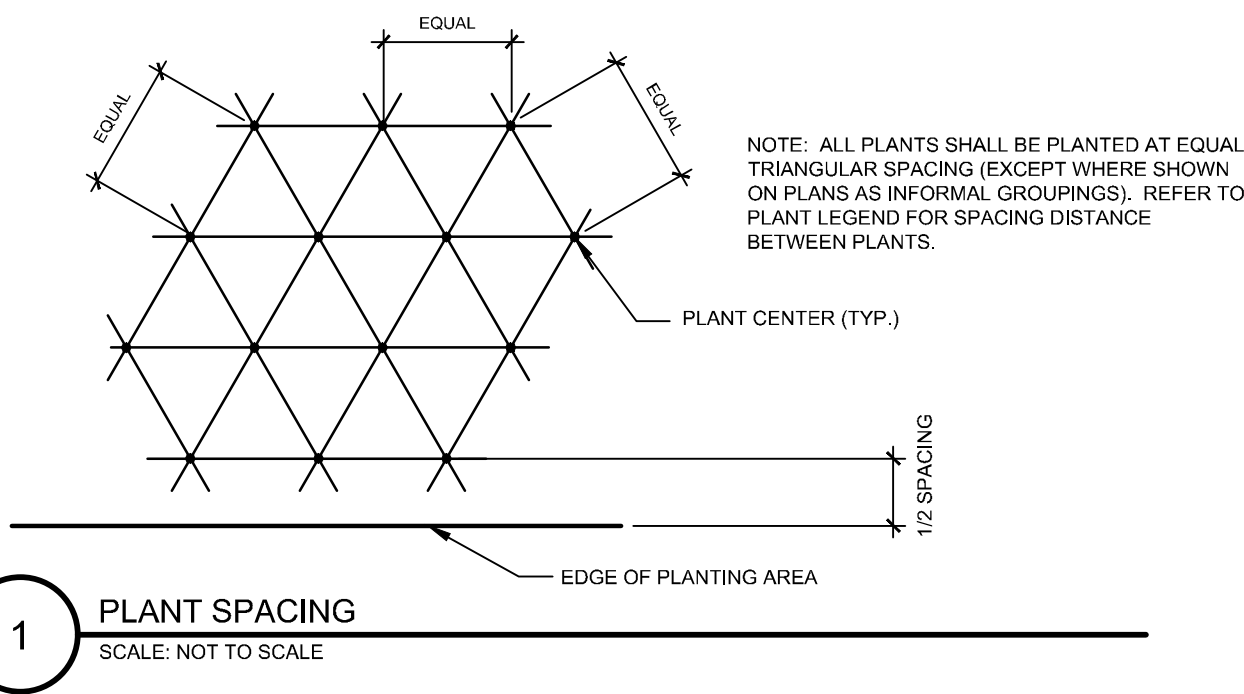


**6855 CONSTITUTION AVE. STORAGE SITE  
 INDUSTRIAL DEVELOPMENT  
 REZONE PACKAGE  
 FOR JOHNSON DEVELOPMENT ASSOCIATES**  
**LOT 1 OF THE EIGHT LINE SUBDIVISION  
 COLORADO SPRINGS, CO 80916**

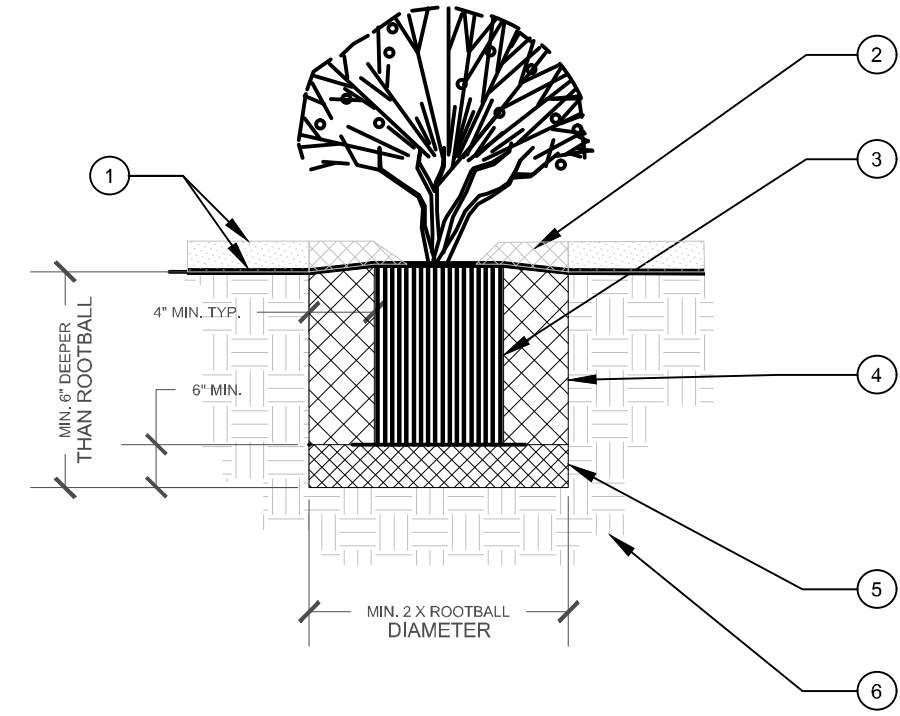
#	Date	Issue / Description	Init.

Project No: JDA00002.20  
 Drawn By: JRW  
 Checked By:  
 Date: 04/22/2022

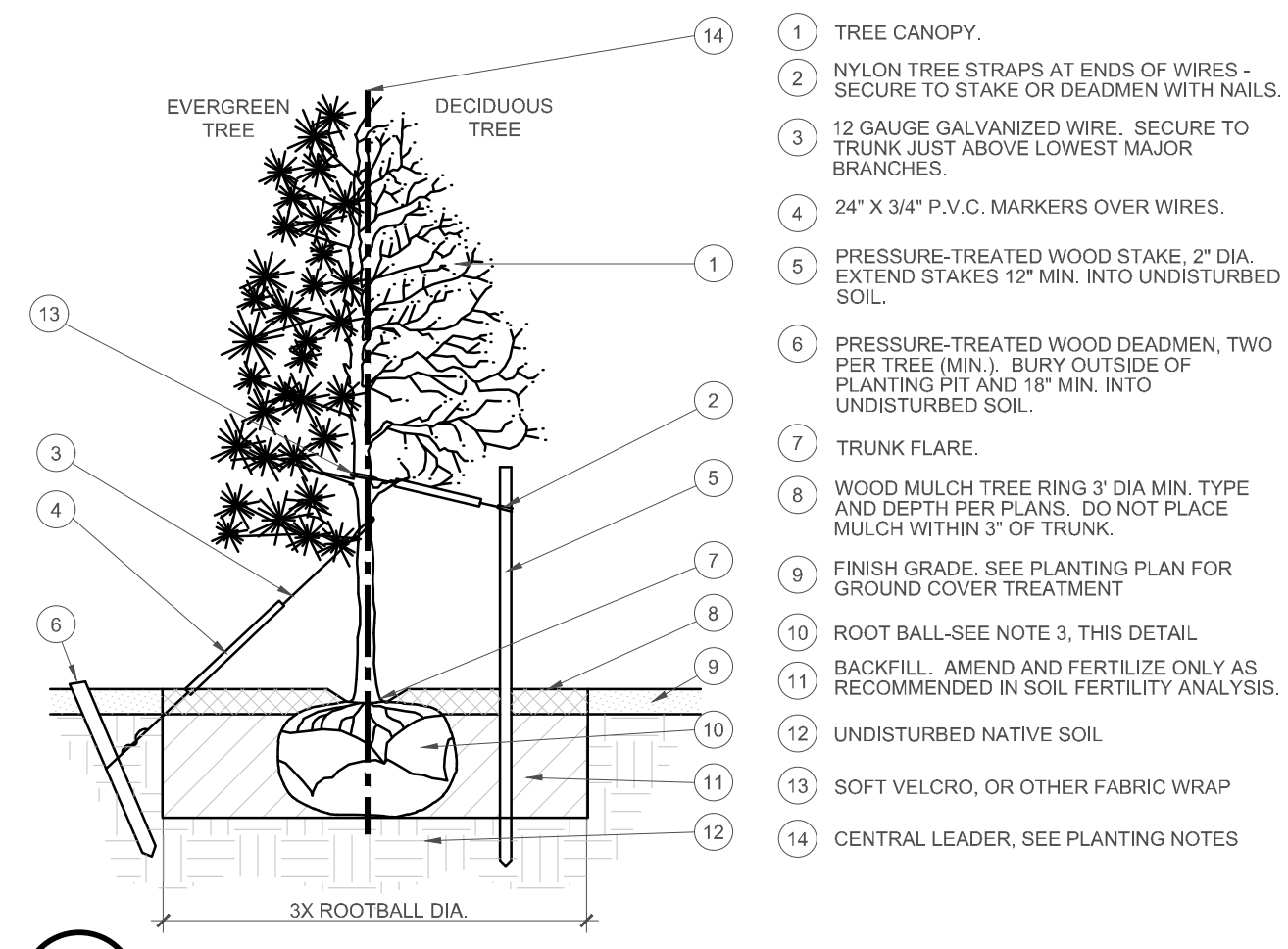
LANDSCAPE DETAILS



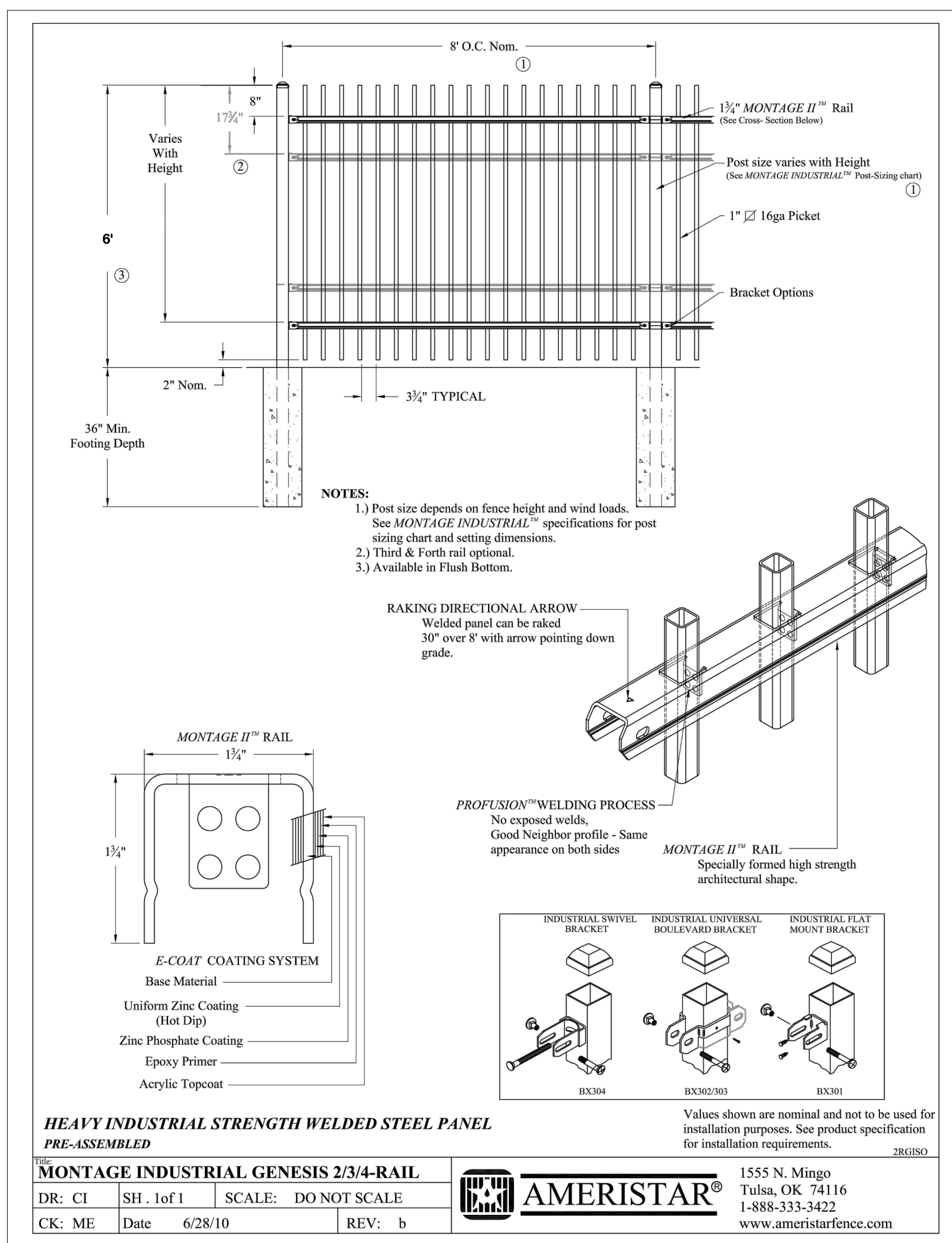
**1 PLANT SPACING**  
 SCALE: NOT TO SCALE



**2 SHRUB AND PERENNIAL DETAIL**  
 SCALE: NOT TO SCALE



**3 TREE PLANTING DETAIL**  
 SCALE: NOT TO SCALE



**4 6' FENCE**  
 OR APPROVED EQUAL  
 SCALE: NTS

**HEAVY INDUSTRIAL STRENGTH WELDED STEEL PANEL**  
**PRE-ASSEMBLED**  
**MONTAGE INDUSTRIAL GENESIS 2 3/4-RAIL**  
 DR: CI SH: 1 of 1 SCALE: DO NOT SCALE  
 CK: ME Date: 6/28/10 REV: b

**AMERISTAR®**

1555 N. Mingo  
 Tulsa, OK 74116  
 1-888-333-3422  
 www.ameristarfence.com

Values shown are nominal and not to be used for installation purposes. See product specification for installation requirements.

2806380

COLOR: BLACK

C:\Users\johndev\Documents\Ammerstar\03\_28\_2015\6855 Const\Drawings\02\_L1.3\_04\_22\_2022.dwg - 04/22/2022 11:42:00 AM