



# Life Storage

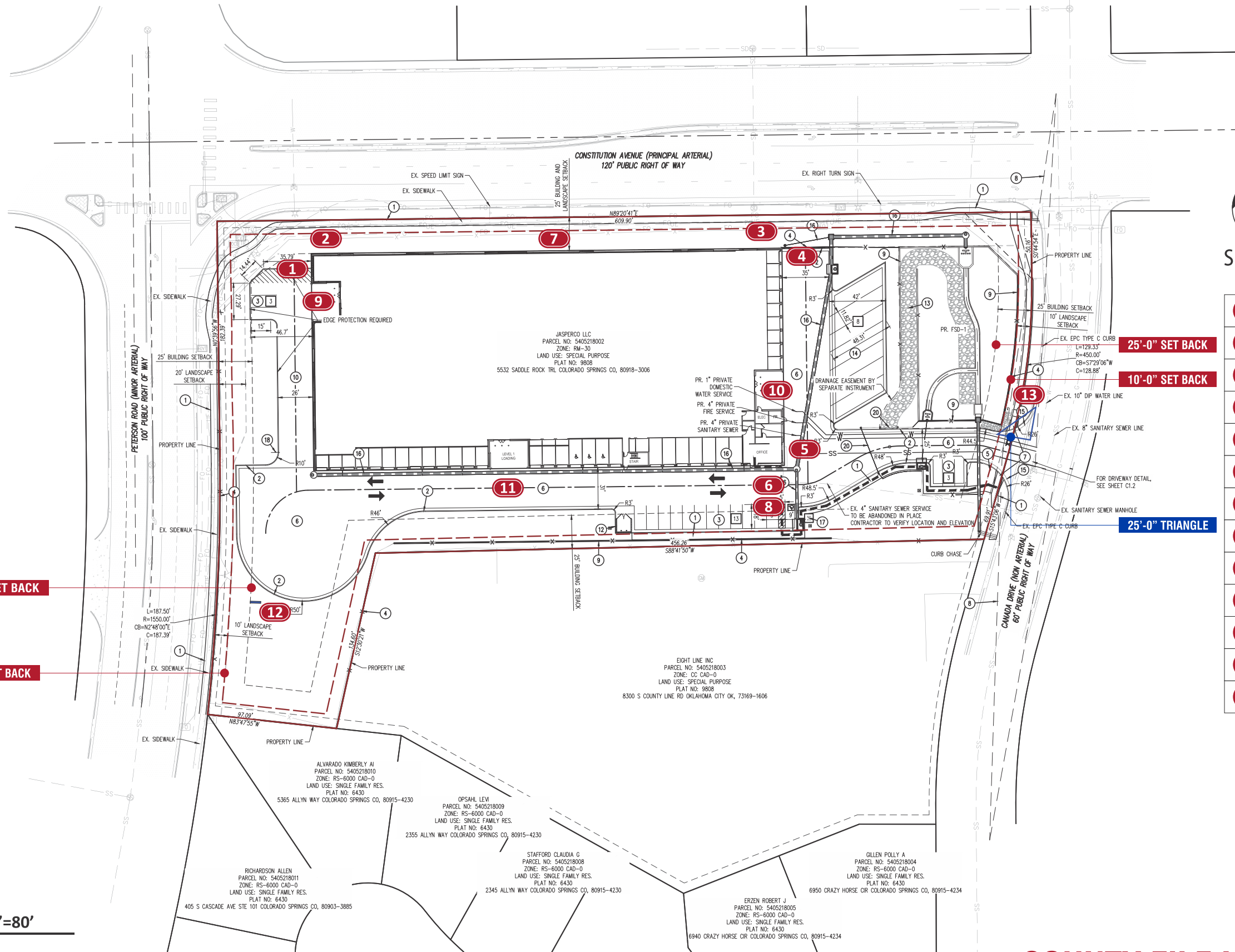
**2460 Canada Drive  
Colorado Springs, Colorado 80915**

Offered by:



700 PARKER SQUARE, SUITE 205  
FLOWER MOUND, TX 75028  
T. 800.675.6353

**COUNTY FILE NUMBER: PPR2224**



<b>1</b>	Remote Face-Lit Channel Letters
<b>2</b>	Remote Face-Lit Channel Letters
<b>3</b>	Remote Face-Lit Channel Letters
<b>4</b>	Remote Face-Lit Channel Letters
<b>5</b>	Remote Face-Lit Channel Letters
<b>6</b>	Remote Face-Lit Channel Letters
<b>7</b>	Remote Face-Lit Channel Letters
<b>8</b>	Office Raceway Channel Letters
<b>9</b>	Loading Raceway Channel Letters
<b>10</b>	Loading Raceway Channel Letters
<b>11</b>	Loading Raceway Channel Letters
<b>12</b>	D/F Pylon sign Structure
<b>13</b>	Directional Ground Sign

25'-0" SET BACK

10'-0" SET BACK

25'-0" SET BACK

10'-0" SET BACK

25'-0" TRIANGLE

SITE PLAN : OVERVIEW : SCALE-1"=80'

**COUNTY FILE NUMBER: PPR2224**



700 Parker Sq STE 205  
Flower Mound, TX 75028  
T. 800.675.6353

**Project:** Life Storage

**Location:** 2460 Canada Drive  
Colorado Springs, Colorado 80915

**Date:** 2/7/23 **Sales:** KB **Designer:** MH  
**File Name:** LS - Colorado Springs, CO

**Revision**

- R1:MH:6/9/23: revised site plan.
- R2:MH:6/14/23: revised site, add second pylon, del directional.
- R3:mh:6/15/23: revised sign amounts.
- R4:mh:7/20/23: updated site address.
- R5:

**Approvals**

**Customer:**

**Landlord:**

**CONCEPTUAL DRAWINGS ONLY:**

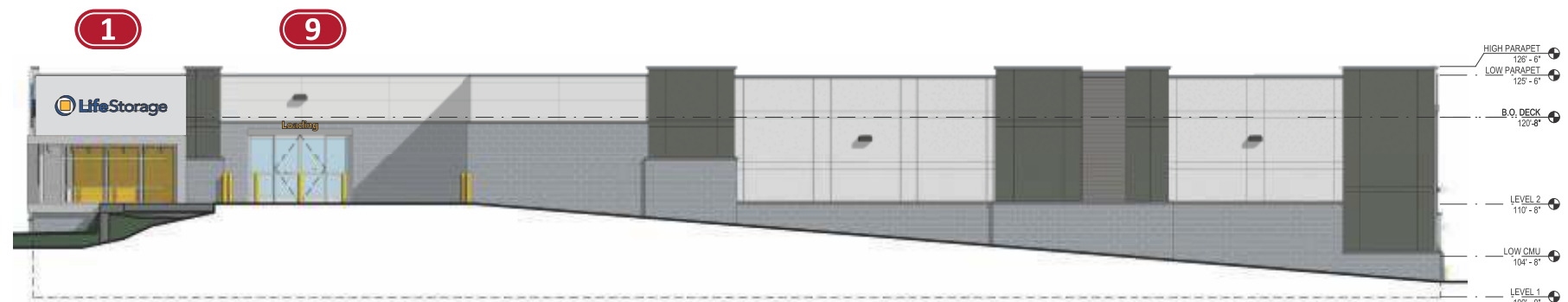
Dimensions are approximate & may change due to construction factors or exact field conditions. Colors shown are as close as printing will allow. Always follow written specifications.

**ALL RIGHTS RESERVED:**

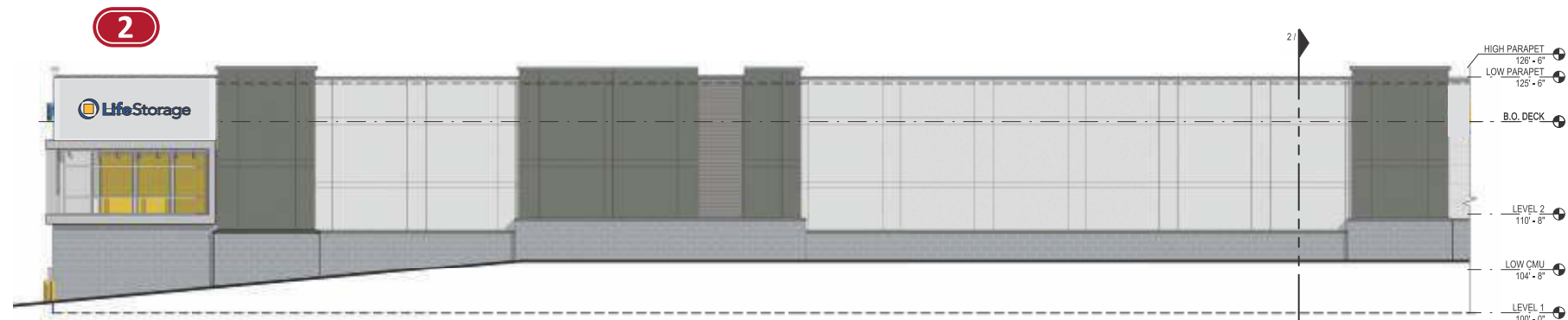
This design has been created for you in connection with a project being planned for you by AD ART. It may not be shown to anyone outside your organization, and may not be reproduced in any manner without prior consent.

**SHEET**

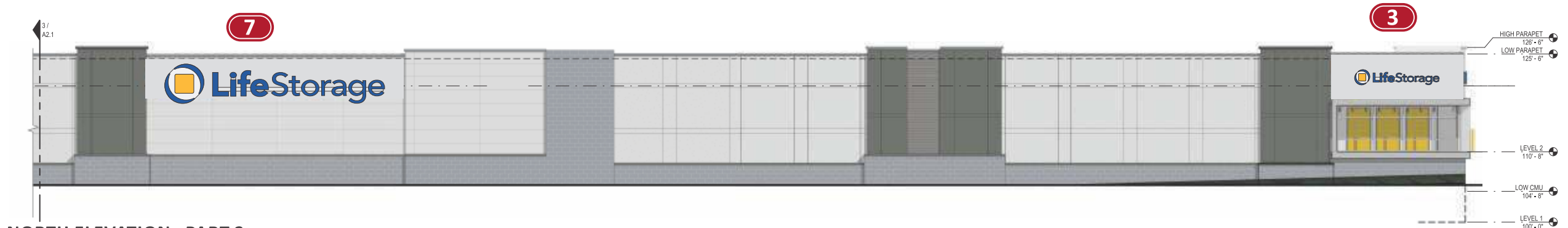
**2**



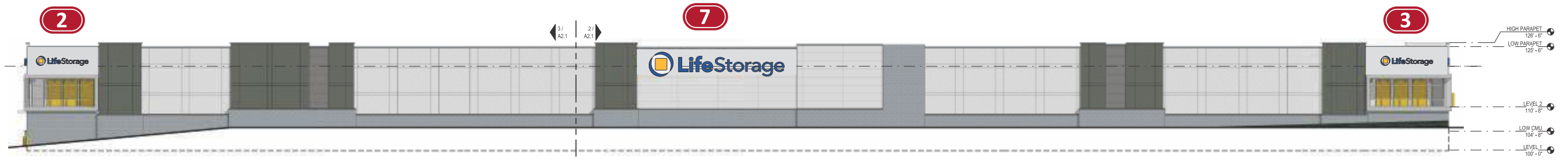
WEST ELEVATION



NORTH ELEVATION : PART 1



NORTH ELEVATION : PART 2



NORTH ELEVATION : COMPLETE

**COUNTY FILE NUMBER: PPR2224**

**ADART**  
 700 Parker Sq STE 205  
 Flower Mound, TX 75028  
 T. 800.675.6353

<b>Project:</b> Life Storage
<b>Location:</b> 2460 Canada Drive Colorado Springs, Colorado 80915
<b>Date:</b> 2/7/23 <b>Sales:</b> KB <b>Designer:</b> MH
<b>File Name:</b> LS - Colorado Springs, CO

<b>Revision</b>
R1:MH:6/9/23: revised site plan.
R2:MH:6/14/23: revised site, add second pylon, del directional.
R3:mh:6/15/23: revised sign amounts.
R4:mh:7/20/23: updated site address.
R5:

<b>Approvals</b>
<b>Customer:</b>
<b>Landlord:</b>

**CONCEPTUAL DRAWINGS ONLY:**  
 Dimensions are approximate & may change due to construction factors or exact field conditions. Colors shown are as close as printing will allow. Always follow written specifications.

**ALL RIGHTS RESERVED:**  
 This design has been created for you in connection with a project being planned for you by AD ART. It may not be shown to anyone outside your organization, and may not be reproduced in any manner without prior consent.



EAST ELEVATION



SOUTH ELEVATION : PART 1



SOUTH ELEVATION : PART 2



SOUTH ELEVATION : COMPLETE

COUNTY FILE NUMBER: PPR2224

**ADART**  
 700 Parker Sq STE 205  
 Flower Mound, TX 75028  
 T. 800.675.6353

<b>Project:</b> Life Storage
<b>Location:</b> 2460 Canada Drive Colorado Springs, Colorado 80915
<b>Date:</b> 2/7/23 <b>Sales:</b> KB <b>Designer:</b> MH
<b>File Name:</b> LS - Colorado Springs, CO

<b>Revision</b>
R1:MH:6/9/23: revised site plan.
R2:MH:6/14/23: revised site, add second pylon, del directional.
R3:mh:6/15/23: revised sign amounts.
R4:mh:7/20/23: updated site address.
R5:

<b>Approvals</b>
<b>Customer:</b>
<b>Landlord:</b>

**CONCEPTUAL DRAWINGS ONLY:**  
 Dimensions are approximate & may change due to construction factors or exact field conditions. Colors shown are as close as printing will allow. Always follow written specifications.

**ALL RIGHTS RESERVED:**  
 This design has been created for you in connection with a project being planned for you by AD ART. It may not be shown to anyone outside your organization, and may not be reproduced in any manner without prior consent.

SHEET

**4**



LOGO BACKER PANEL: .125 ALUMINUM PANEL PTM BUILDING WALL

- 1
- 2
- 3
- 4
- 5
- 6

**FACE-LIT, RACEWAY CHANNEL LETTERS**

(6) REQUIRED - FABRICATE AND INSTALL -

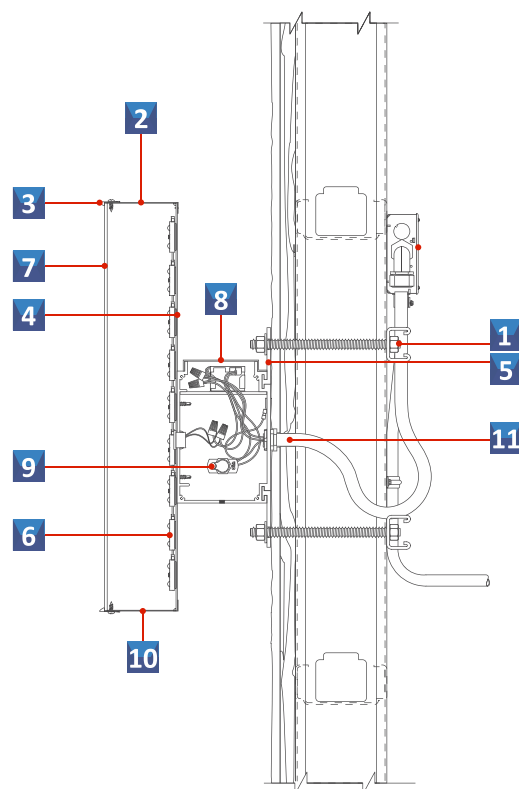
SCALE: 1" = 1'-0"

29.5 SF

**SPECIFICATIONS**

- 1 NON-CORROSIVE INSTALLATION HARDWARE: GALVANIZED
- 2 5" DEEP FABRICATED ALUMINUM RETURNS ALL INTERIORS LIGHT ENHANCEMENT WHITE ICON ARCHES: PRE-FINISHED WHITE ICON SQUARE: WRISCO CAUTION YELLOW LETTERS: PRE-FINISHED WHITE
- 3 1" TRIM CAP RETAINER: ICON ARCHES: JEWELITE WHITE ICON SQUARE: GEMINI 2540 MANGO YELLOW LETTERS: JEWELITE WHITE
- 4 FLAT ALUMINUM BACK
- 5 1/4" TH. METAL FLAT BAR FOR SECURE INSTALL
- 6 SLOAN VL 4 HO 6500K WHITE LED MODULES
- 7 3/16" TH. #7328 ACRYLIC FACE W/ 1ST SURFACE TRANSLUCENT & PERFORATED VINYL AS SHOWN
- 8 SLOAN MULTI-TAP POWER SUPPLY MOUNTED IN A 7 1/4" x 7 1/4" EXTRUDED .050 ALUMINUM RACEWAY SUPPORT/WIRING BOX PAINTED: **PAINT COLOR TBD**
- 9 VISIBLE CUT-OFF SWITCH WITH FLIP COVER
- 10 1/4" WEEP HOLES (2) TWO PER LETTER
- 11 GROUNDED WALL PASS-THRU SEALED WATER TIGHT. WHIP ON LEFT SIDE

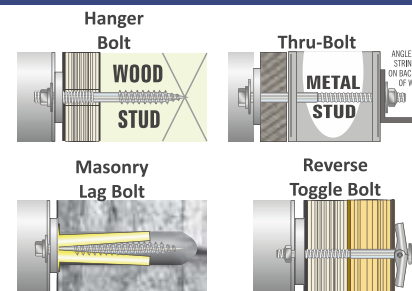
**SECTION DETAIL**



**COLOR SCHEDULE**

- 3M 3630-157 SULTAN BLUE PANTONE 288 C BLUE
- 1" JEWELITE TRIM CAP BLUE
- PERFORATED VINYL 3M 3635-157 SULTAN BLUE PANTONE 288 C BLUE
- 3M 3630-25 SUNFLOWER YELLOW PANTONE 7549 C YELLOW
- 1" GEMINI TRIM CAP 2540 MANGO YELLOW
- WHITE

**MOUNTING DETAILS**



\*All Hardware to be Galvanized and Non Corrosive

**MANUFACTURING NOTES**

CHANNEL LETTER SETS SMALLER THAN 48" WILL CONSTRUCTED USING .040 ALUMINUM RETURNS & .063 ALUMINUM BACKS.

CHANNEL LETTER SETS 48"-71" WILL BE CONSTRUCTED USING .063 ALUMINUM RETURNS & .090 ALUMINUM BACKS.

WALL SIGNS ARE REQUIRED TO BE ON DEDICATED CIRCUITS W/ INTERMATIC ASTRONOMIC ET8015C TIMERS

**BRACING DETAIL**

WHEN NEEDED SUPPORTS TO BE .090 ALUMINUM PAINTED TO MATCH RW & POP-RIVITED TO LETTER RETURN (FACING UP TO HIDE FROM SITE)



**Digital Timer Technical Specifications**



Name: Intermatic ET8015C 7-Day 30-Amps SPST Electronic Astronomic Time Switch.  
 Voltage: 120-277 VAC, 50/60 Hz  
 Circuit: (1) 30 amp  
 Enclosure: NEMA 1  
 Weight: 2.8 pounds  
 Dimensions: 5.2 x 3.2 x 8 inches  
 Time Switch: 7-Day Astronomic  
 Backup: 2 AAA Batteries



**COUNTY FILE NUMBER: PPR2224**



700 Parker Sq STE 205  
 Flower Mound, TX 75028  
 T. 800.675.6353

Project: Life Storage

Location: 2460 Canada Drive  
 Colorado Springs, Colorado 80915

Date: 2/7/23 Sales: KB Designer: MH  
 File Name: LS - Colorado Springs, CO

**Revision**

- R1:MH:6/9/23: revised site plan.
- R2:MH:6/14/23: revised site, add second pylon, del directional.
- R3:mh:6/15/23: revised sign amounts.
- R4:mh:7/20/23: updated site address.
- R5:

**Approvals**

Customer:

Landlord:

**CONCEPTUAL DRAWINGS ONLY:**

Dimensions are approximate & may change due to construction factors or exact field conditions. Colors shown are as close as printing will allow. Always follow written specifications.

**ALL RIGHTS RESERVED:**

This design has been created for you in connection with a project being planned for you by AD ART. It may not be shown to anyone outside your organization, and may not be reproduced in any manner without prior consent.

**SHEET**

5



**7** FACE-LIT, RACEWAY CHANNEL LETTERS

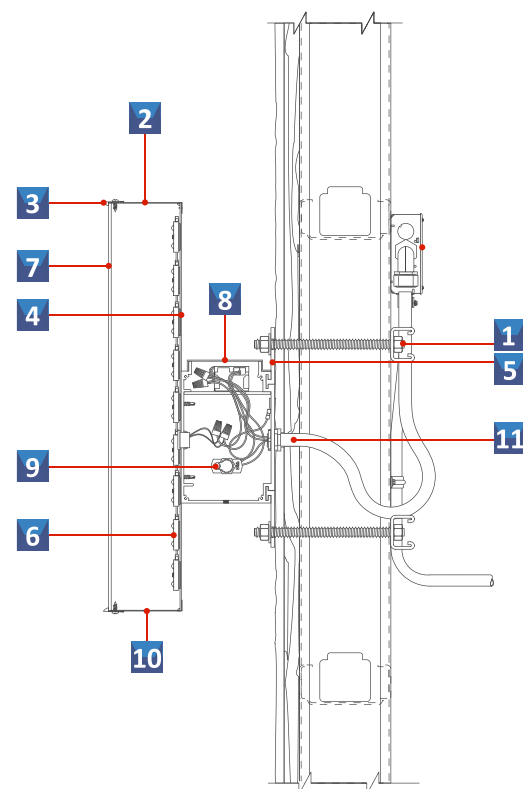
(1) REQUIRED - FABRICATE AND INSTALL -

SCALE: 3/8" = 1'-0"  
200.0 SF

**SPECIFICATIONS**

- 1** NON-CORROSIVE INSTALLATION HARDWARE: GALVANIZED
- 2** 5" DEEP FABRICATED ALUMINUM RETURNS ALL INTERIORS LIGHT ENHANCEMENT WHITE  
ICON ARCHES: PRE-FINISHED WHITE  
ICON SQUARE: WRISCO CAUTION YELLOW  
LETTERS: PRE-FINISHED WHITE
- 3** 1" TRIM CAP RETAINER:  
ICON ARCHES: JEWELITE WHITE  
ICON SQUARE: GEMINI 2540 MANGO YELLOW  
LETTERS: JEWELITE WHITE
- 4** FLAT ALUMINUM BACK
- 5** 1/4" TH. METAL FLAT BAR FOR SECURE INSTALL
- 6** SLOAN VL 4 HO 6500K WHITE LED MODULES
- 7** 3/16" TH. #7328 ACRYLIC FACE W/ 1ST SURFACE TRANSLUCENT & PERFORATED VINYL AS SHOWN
- 8** SLOAN MULTI-TAP POWER SUPPLY MOUNTED IN A 7 1/4" x 7 1/4" EXTRUDED .050 ALUMINUM RACEWAY SUPPORT/WIRING BOX PAINTED: **PAINT COLOR TBD**
- 9** VISIBLE CUT-OFF SWITCH WITH FLIP COVER
- 10** 1/4" WEEP HOLES (2) TWO PER LETTER
- 11** GROUNDED WALL PASS-THRU SEALED WATER TIGHT. WHIP ON LEFT SIDE

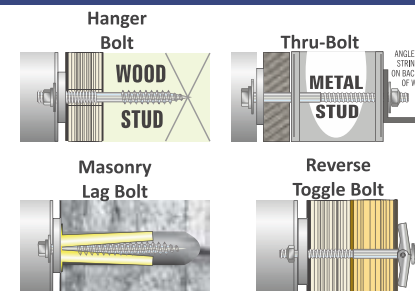
**SECTION DETAIL**



**COLOR SCHEDULE**

- 3M 3630-157 SULTAN BLUE PANTONE 288 C BLUE
- 1" JEWELITE TRIM CAP BLUE
- PERFORATED VINYL 3M 3635-157 SULTAN BLUE PANTONE 288 C BLUE
- 3M 3630-25 SUNFLOWER YELLOW PANTONE 7549 C YELLOW
- 1" GEMINI TRIM CAP 2540 MANGO YELLOW
- WHITE

**MOUNTING DETAILS**



\*All Hardware to be Galvanized and Non Corrosive

**MANUFACTURING NOTES**

CHANNEL LETTER SETS SMALLER THAN 48" WILL CONSTRUCTED USING .040 ALUMINUM RETURNS & .063 ALUMINUM BACKS.  
  
CHANNEL LETTER SETS 48"-71" WILL BE CONSTRUCTED USING .063 ALUMINUM RETURNS & .090 ALUMINUM BACKS.

**BRACING DETAIL**

WHEN NEEDED SUPPORTS TO BE .090 ALUMINUM PAINTED TO MATCH RW & POP-RIVITED TO LETTER RETURN (FACING UP TO HIDE FROM SITE)



**Digital Timer Technical Specifications**



Name: Intermatic ET8015C 7-Day 30-Amps SPST Electronic Astronomic Time Switch.  
Voltage: 120-277 VAC, 50/60 Hz  
Circuit: (1) 30 amp  
Enclosure: NEMA 1  
Weight: 2.8 pounds  
Dimensions: 5.2 x 3.2 x 8 inches  
Time Switch: 7-Day Astronomic  
Backup: 2 AAA Batteries

**WALL SIGNS ARE REQUIRED TO BE ON DEDICATED CIRCUITS w/ INTERMATIC ASTRONOMICAL ET8015C TIMERS**



**COUNTY FILE NUMBER: PPR2224**



700 Parker Sq STE 205  
Flower Mound, TX 75028  
T. 800.675.6353

**Project:** Life Storage

**Location:** 2460 Canada Drive  
Colorado Springs, Colorado 80915

**Date:** 2/7/23    **Sales:** KB    **Designer:** MH  
**File Name:** LS - Colorado Springs, CO

**Revision**

- R1:MH:6/9/23: revised site plan.
- R2:MH:6/14/23: revised site, add second pylon, del directional.
- R3:mh:6/15/23: revised sign amounts.
- R4:mh:7/20/23: updated site address.
- R5:

**Approvals**

**Customer:**

**Landlord:**

**CONCEPTUAL DRAWINGS ONLY:**

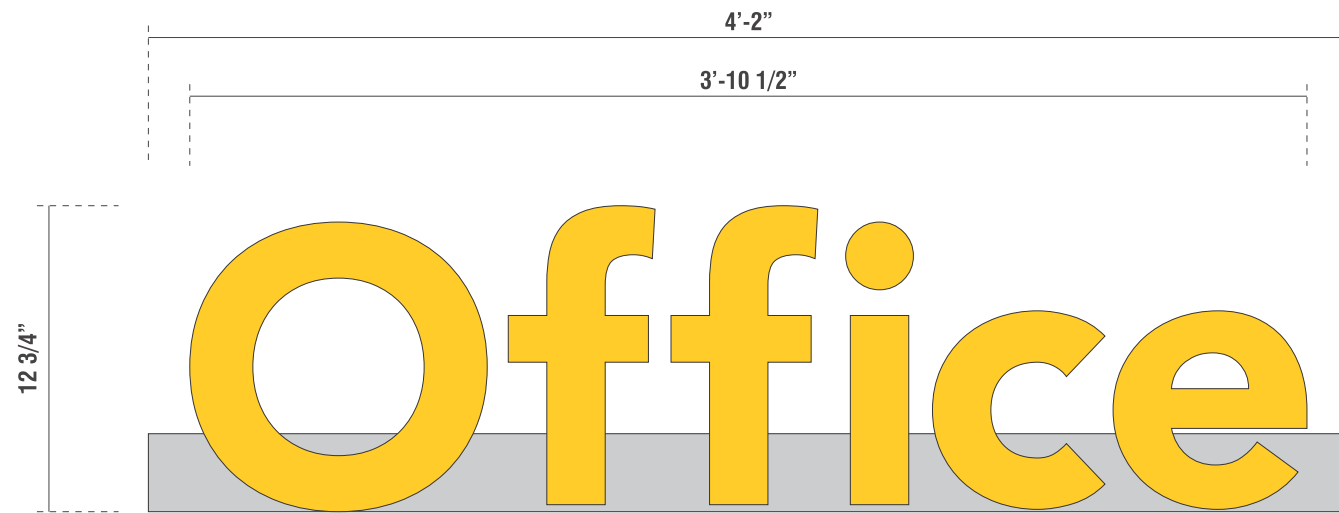
Dimensions are approximate & may change due to construction factors or exact field conditions. Colors shown are as close as printing will allow. Always follow written specifications.

**ALL RIGHTS RESERVED:**

This design has been created for you in connection with a project being planned for you by AD ART. It may not be shown to anyone outside your organization, and may not be reproduced in any manner without prior consent.

**SHEET**

**6**



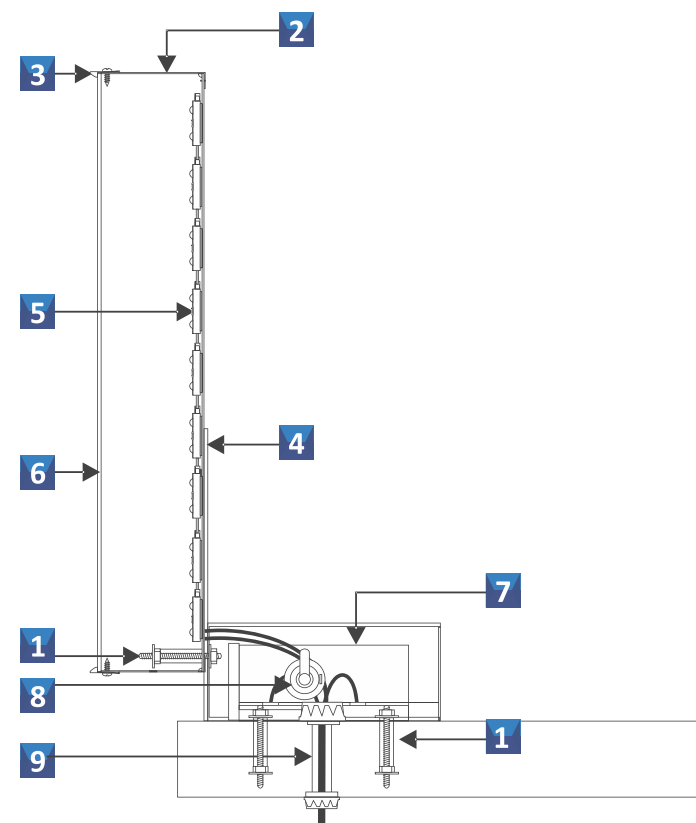
**8 OFFICE SIGN**  
 (1) REQUIRED - FABRICATE AND INSTALL -

SCALE: 1 1/2" = 1'-0"  
 4.1 SQ.FT.

**SPECIFICATIONS**

- 1** NON-CORROSIVE INSTALLATION HARDWARE:  
#10 1/4" PITCH SCREW GALVANIZED
- 2** 3" DEEP FABRICATED ALUMINUM RETURNS  
FINISHED WRISCO CUSTION YELLOW W/ INTERIORS FINISHED  
LIGHT ENHANCEMENT WHITE
- 3** 1" TRIM CAP RETAINER: MANGO YELLOW
- 4** FLAT ALUMINUM BACK MOUNTED TO 1/2 HEIGHT  
ALUMINUM PLATE ATTACHED BY #10 1/4" PITCH  
GALVANIZED SCREW
- 5** SLOAN V180 MINI LED DIODE MODULE: WHITE
- 6** 3/16" TH. #7447 ACRYLIC FACE W/ 1ST SURFACE  
3M 3630-25 SUNFLOWER YELLOW VINYL AS SHOWN
- 7** LOW VOLTAGE ELECTRONIC POWER SUPPLY  
MOUNTED IN AN EXTRUDED .050 ALUMINUM  
RACEWAY SUPPORT/WIRING BOX  
PAINTED: **COLOR TBD**
- 8** VISIBLE CUT-OFF SWITCH WITH FLIP COVER
- 9** GROUNDED WALL PASS-THRU SEALED WATER  
TIGHT. WHIP ON LEFT SIDE

**SECTION DETAIL**



- 3M 3630-157 SULTAN BLUE  
PANTONE 288 C BLUE
- 1" JEWELITE TRIM CAP  
BLUE
- PERFORATED VINYL  
3M 3635-157 SULTAN BLUE  
PANTONE 288 C BLUE
- 3M 3630-25 SUNFLOWER YELLOW  
PANTONE 7549 C YELLOW
- 1" GEMINI TRIM CAP  
2540 MANGO YELLOW
- WHITE

**COUNTY FILE NUMBER: PPR2224**



700 Parker Sq STE 205  
 Flower Mound, TX 75028  
 T. 800.675.6353

**Project:** Life Storage

**Location:** 2460 Canada Drive  
 Colorado Springs, Colorado 80915

**Date:** 2/7/23    **Sales:** KB    **Designer:** MH  
**File Name:** LS - Colorado Springs, CO

**Revision**

- R1:MH:6/9/23: revised site plan.
- R2:MH:6/14/23: revised site, add second pylon, del directional.
- R3:mh:6/15/23: revised sign amounts.
- R4:mh:7/20/23: updated site address.
- R5:

**Approvals**

**Customer:**

**Landlord:**

**CONCEPTUAL DRAWINGS ONLY:**

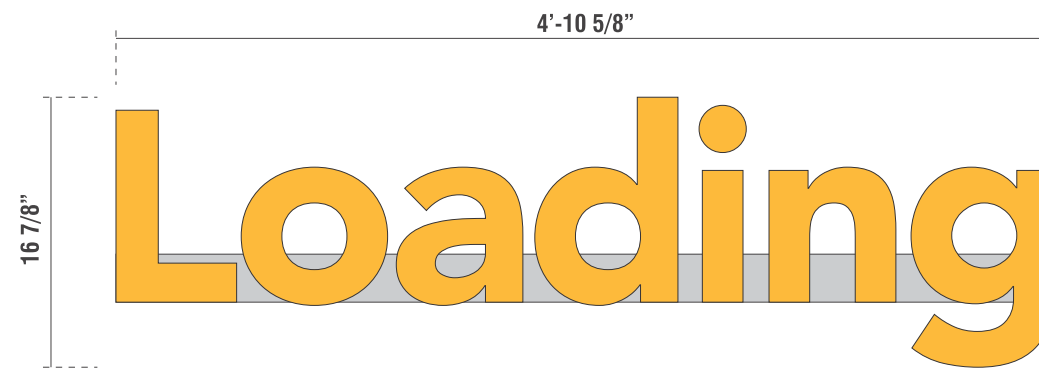
Dimensions are approximate & may change due to construction factors or exact field conditions. Colors shown are as close as printing will allow. Always follow written specifications.

**ALL RIGHTS RESERVED:**

This design has been created for you in connection with a project being planned for you by AD ART. It may not be shown to anyone outside your organization, and may not be reproduced in any manner without prior consent.

SHEET

7



9 10 11 **LOADING SIGN**

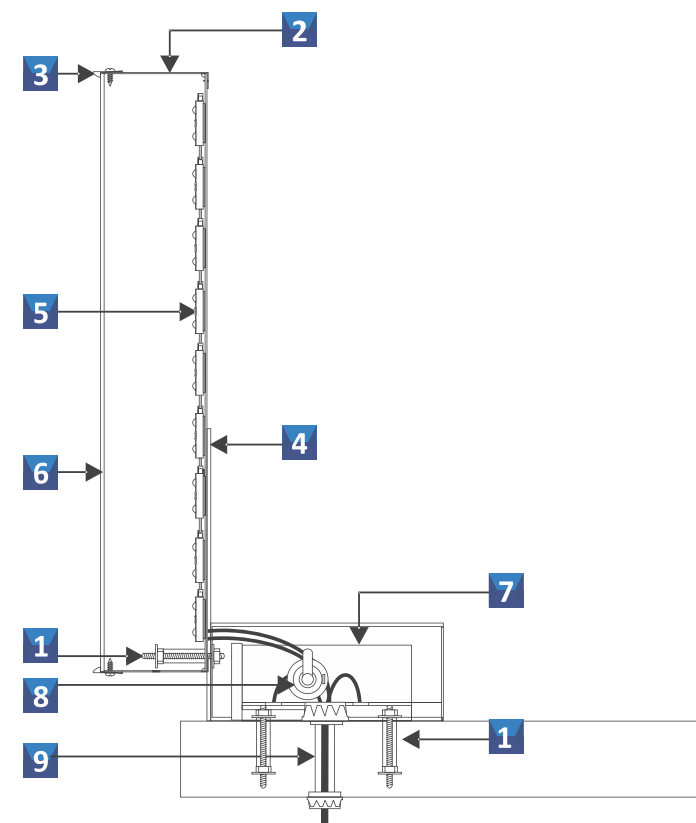
( 3 ) REQUIRED - FABRICATE AND INSTALL -

SCALE: 1" = 1'-0"  
6.8 SQ.FT.

### SPECIFICATIONS

- 1 NON-CORROSIVE INSTALLATION HARDWARE:  
#10 1/4" PITCH SCREW GALVANIZED
- 2 3" DEEP FABRICATED ALUMINUM RETURNS  
FINISHED WRISCO CUSTION YELLOW W/ INTERIORS FINISHED  
LIGHT ENHANCEMENT WHITE
- 3 1" TRIM CAP RETAINER: MANGO YELLOW
- 4 FLAT ALUMINUM BACK MOUNTED TO 1/2 HEIGHT  
ALUMINUM PLATE ATTACHED BY #10 1/4" PITCH  
GALVANIZED SCREW
- 5 SLOAN V180 MINI LED DIODE MODULE: WHITE
- 6 3/16" TH. #7447 ACRYLIC FACE W/ 1ST SURFACE  
3M 3630-25 SUNFLOWER YELLOW VINYL AS SHOWN
- 7 LOW VOLTAGE ELECTRONIC POWER SUPPLY  
MOUNTED IN AN EXTRUDED .050 ALUMINUM  
RACEWAY SUPPORT/WIRING BOX  
PAINTED: **COLOR TBD**
- 8 VISIBLE CUT-OFF SWITCH WITH FLIP COVER
- 9 GROUNDED WALL PASS-THRU SEALED WATER  
TIGHT. WHIP ON LEFT SIDE

### SECTION DETAIL



- 3M 3630-157 SULTAN BLUE  
PANTONE 288 C BLUE
- 1" JEWELITE TRIM CAP  
BLUE
- PERFORATED VINYL  
3M 3635-157 SULTAN BLUE  
PANTONE 288 C BLUE
- 3M 3630-25 SUNFLOWER YELLOW  
PANTONE 7549 C YELLOW
- 1" GEMINI TRIM CAP  
2540 MANGO YELLOW
- WHITE

**COUNTY FILE NUMBER: PPR2224**



700 Parker Sq STE 205  
Flower Mound, TX 75028  
T. 800.675.6353

Project: Life Storage

Location: 2460 Canada Drive  
Colorado Springs, Colorado 80915

Date: 2/7/23 Sales: KB Designer: MH  
File Name: LS - Colorado Springs, CO

#### Revision

- R1:MH:6/9/23: revised site plan.
- R2:MH:6/14/23: revised site, add second pylon, del directional.
- R3:mh:6/15/23: revised sign amounts.
- R4:mh:7/20/23: updated site address.
- R5:

#### Approvals

Customer: \_\_\_\_\_

Landlord: \_\_\_\_\_

#### CONCEPTUAL DRAWINGS ONLY:

Dimensions are approximate & may change due to construction factors or exact field conditions. Colors shown are as close as printing will allow. Always follow written specifications.

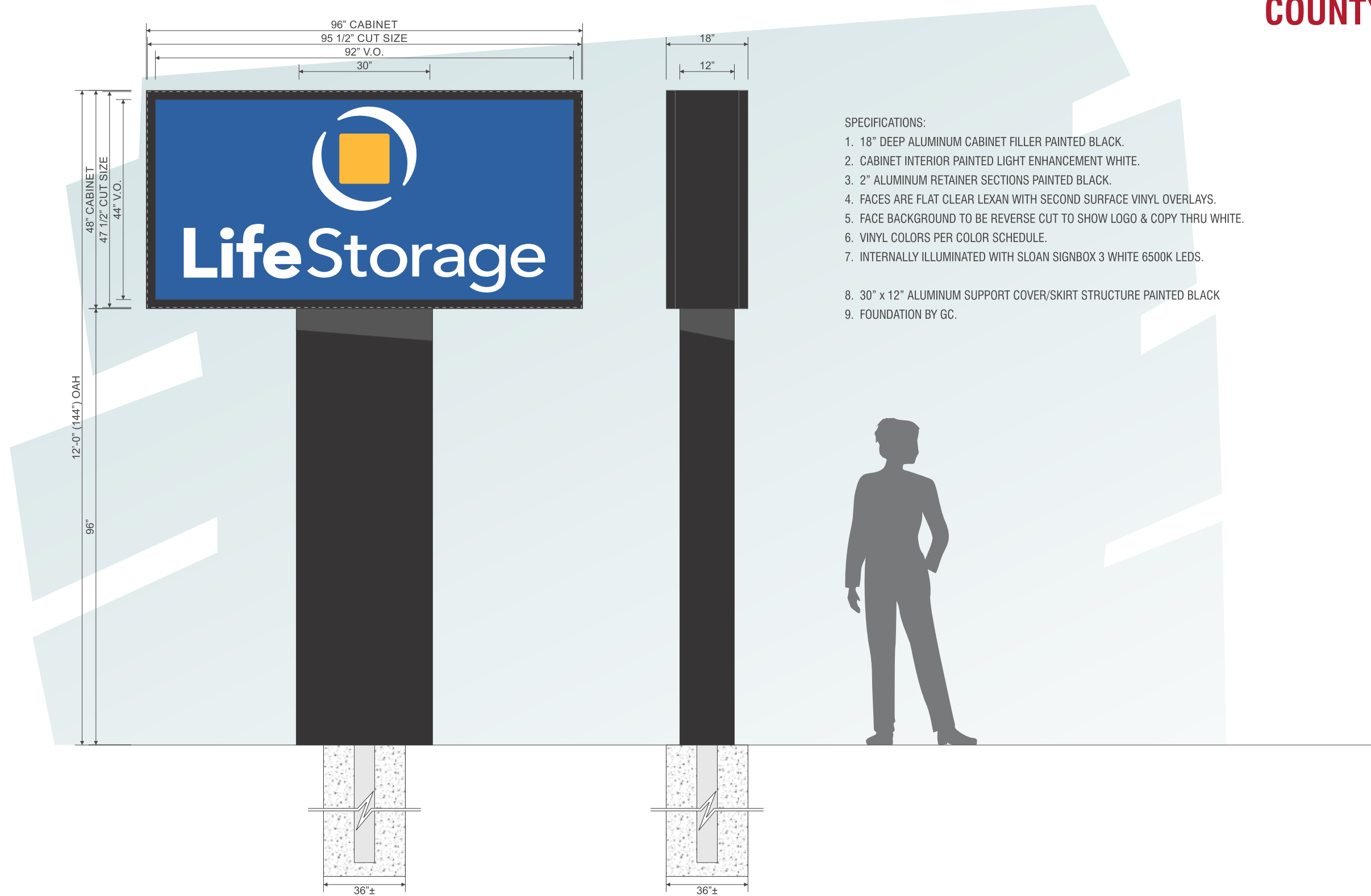
#### ALL RIGHTS RESERVED:

This design has been created for you in connection with a project being planned for you by AD ART. It may not be shown to anyone outside your organization, and may not be reproduced in any manner without prior consent.

SHEET

8





SPECIFICATIONS:

- 18" DEEP ALUMINUM CABINET FILLER PAINTED BLACK.
- CABINET INTERIOR PAINTED LIGHT ENHANCEMENT WHITE.
- 2" ALUMINUM RETAINER SECTIONS PAINTED BLACK.
- FACES ARE FLAT CLEAR LEXAN WITH SECOND SURFACE VINYL OVERLAYS.
- FACE BACKGROUND TO BE REVERSE CUT TO SHOW LOGO & COPY THRU WHITE.
- VINYL COLORS PER COLOR SCHEDULE.
- INTERNALLY ILLUMINATED WITH SLOAN SIGNBOX 3 WHITE 6500K LEDS.
- 30" x 12" ALUMINUM SUPPORT COVER/SKIRT STRUCTURE PAINTED BLACK
- FOUNDATION BY GC.

CODE INFORMATION:	
EXISTING SF:	FORMULA: The total area of F/S Signs shall not exceed 2sf for each LF of the building wall closest to the F/S Sign or 40sf, whichever is smaller. The max F/S Sign area shall be 40sf where no building is present.
0.0	NUMBER ALLOWED: 1 per lot
ALLOWED SF:	MAX OVER ALL HEIGHT: NTE building height; No building, max 12ft
40.0	GRADE TO SIGN CLEARANCE: Not obstruct view; Out of sight triangle
RECOMMENDED SF:	SET BACK: Low profile min 3ft from a lot, parcel, or tract line; Pole 10ft from a lot, parcel, or tract line
40.0	ILLUMINATION: Internal & External

Relevant code sections regarding signs. Freestanding Signs. (I) Number of Freestanding Signs. Commercial Lot or Parcel Less than 10 Acres in Area: Where the commercial lot or parcel is less than 10 acres in total area, 1 sign is allowed per road frontage. Free standing signs: Commercial Lot or Parcel Less than 8 Acres in Area: Where the commercial lot or parcel is less than 8 acres in total area, the maximum area of each sign shall be 40 square feet. All other freestanding signs exceeding 6 feet in height shall be setback a minimum of 10 feet from a lot, parcel, or tract line. Site Acreage Total: 3.72 Acres (162,043.0 SF)

COLOR SCHEDULE	
	3M 3630-157 SULTAN BLUE PANTONE 288 C BLUE
	3M 3630-25 SUNFLOWER YELLOW PANTONE 7549 C YELLOW
	WHITE
	BLACK

**12** D/F MONUMENT CABINET / STRUCTURE  
( 1 ) TWO REQUIRED - FABRICATE & INSTALL

SCALE: 1/2" = 1'-0"  
Cabinet: 50.0 SF

**ADART**  
700 Parker Sq STE 205  
Flower Mound, TX 75028  
T. 800.675.6353

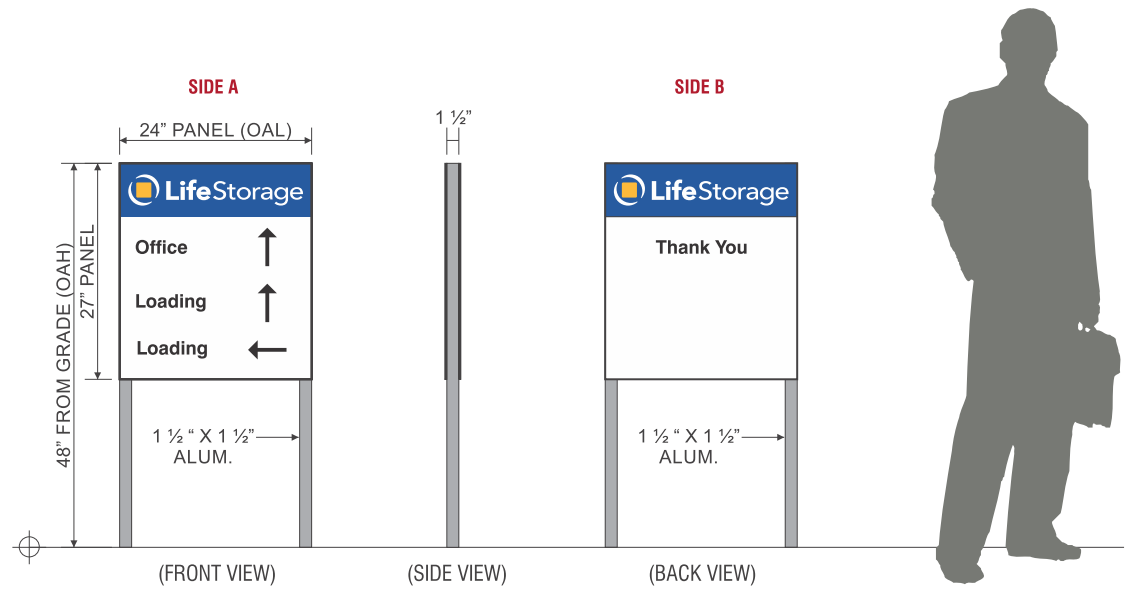
**Project:** Life Storage  
**Location:** 2460 Canada Drive  
Colorado Springs, Colorado 80915  
**Date:** 2/7/23 **Sales:** KB **Designer:** MH  
**File Name:** LS - Colorado Springs, CO

**Revision**  
R1:MH:6/9/23: revised site plan.  
R2:MH:6/14/23: revised site, add second pylon, del directional.  
R3:mh:6/15/23: revised sign amounts.  
R4:mh:7/20/23: updated site address.  
R5:

**Approvals**  
**Customer:**  
**Landlord:**

**CONCEPTUAL DRAWINGS ONLY:**  
Dimensions are approximate & may change due to construction factors or exact field conditions. Colors shown are as close as printing will allow. Always follow written specifications.  
**ALL RIGHTS RESERVED:**  
This design has been created for you in connection with a project being planned for you by AD ART. It may not be shown to anyone outside your organization, and may not be reproduced in any manner without prior consent.

**SHEET**  
**9**



**13 D/F DIRECTIONAL GROUND SIGN: PETERSON RD**





( 1 ) QTY

SCALE: 1/2" = 1'-0"

PANEL: 4.5 SF

**SPECIFICATIONS:**

1. 1 1/2" SQUARE ALUMINUM FRAME STRUCTURE.
2. ACM PANELS WITH DIRECT DIGITAL PRINT LOGO & GREEN BACKGROUND
3. COPY & ARROWS ARE FIRST SURFACE REFLECTIVE VINYL OVERLAYS.
4. ACM PANELS TO BE MECHANICALLY ATTACHED TO SUPPORT FRAME.

COLOR SCHEDULE	
	3M 3630-157 SULTAN BLUE PANTONE 288 C BLUE
	3M 3630-25 SUNFLOWER YELLOW PANTONE 7549 C YELLOW
	WHITE
	BLACK

**COUNTY FILE NUMBER: PPR2224**



**700 Parker Sq STE 205  
Flower Mound, TX 75028  
T. 800.675.6353**

<b>Project:</b> Life Storage
<b>Location:</b> 2460 Canada Drive Colorado Springs, Colorado 80915
<b>Date:</b> 2/7/23 <b>Sales:</b> KB <b>Designer:</b> MH
<b>File Name:</b> LS - Colorado Springs, CO

<b>Revision</b>
R1:MH:6/9/23: revised site plan.
R2:MH:6/14/23: revised site, add second pylon, del directional.
R3:mh:6/15/23: revised sign amounts.
R4:mh:7/20/23: updated site address.
R5:

<b>Approvals</b>
<b>Customer:</b>
<b>Landlord:</b>

**CONCEPTUAL DRAWINGS ONLY:**  
Dimensions are approximate & may change due to construction factors or exact field conditions. Colors shown are as close as printing will allow. Always follow written specifications.

**ALL RIGHTS RESERVED:**  
This design has been created for you in connection with a project being planned for you by AD ART. It may not be shown to anyone outside your organization, and may not be reproduced in any manner without prior consent.