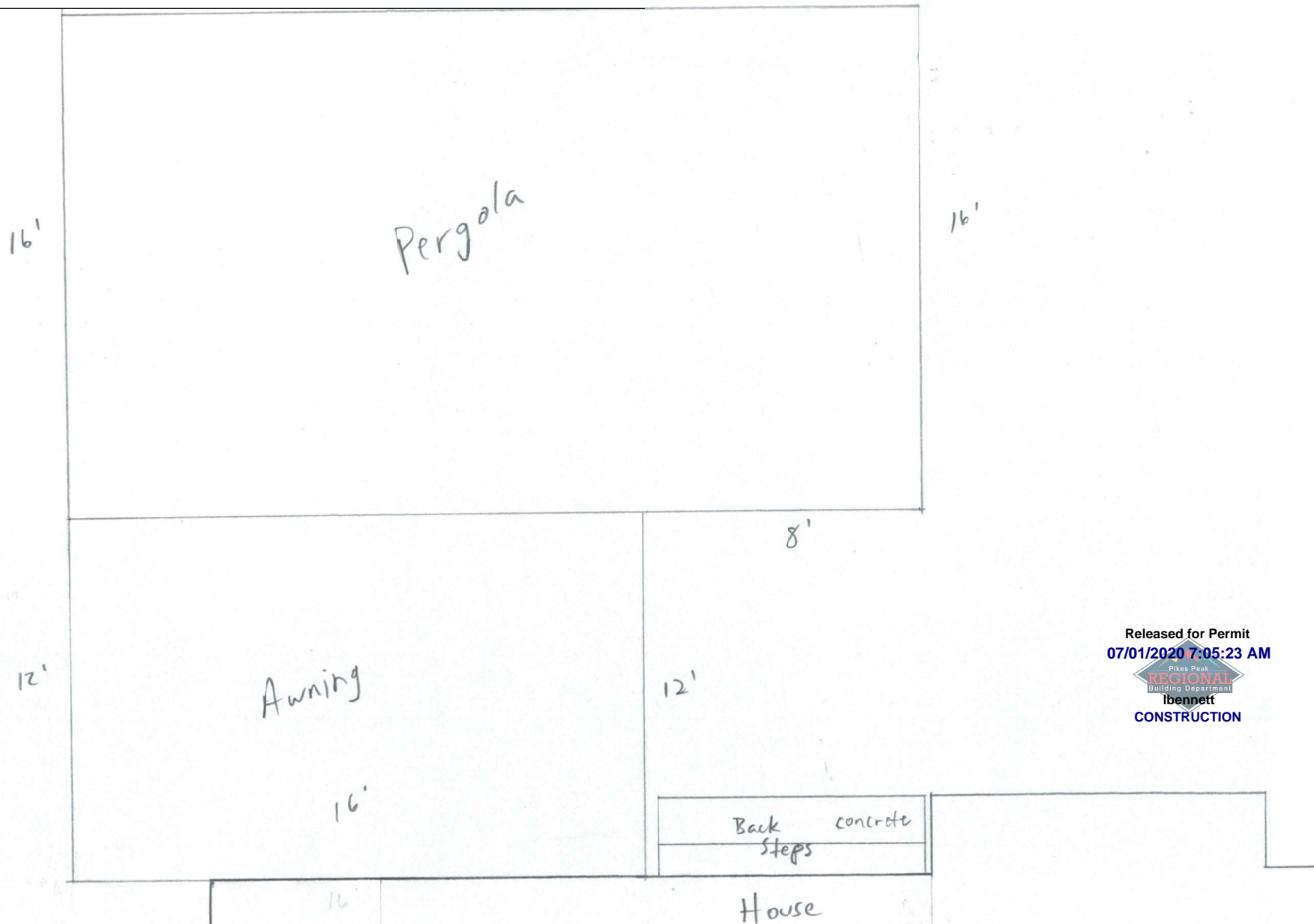
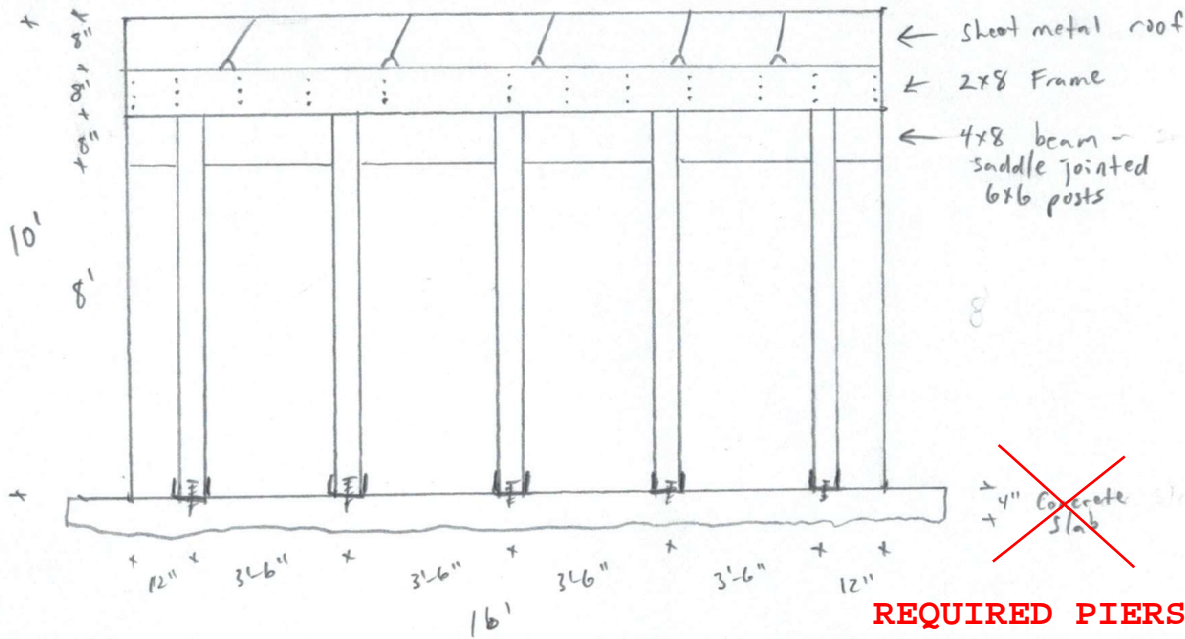


**USE ON OF THESE CONNECTION OPTIONS
FOR YOUR PATIO COVER**



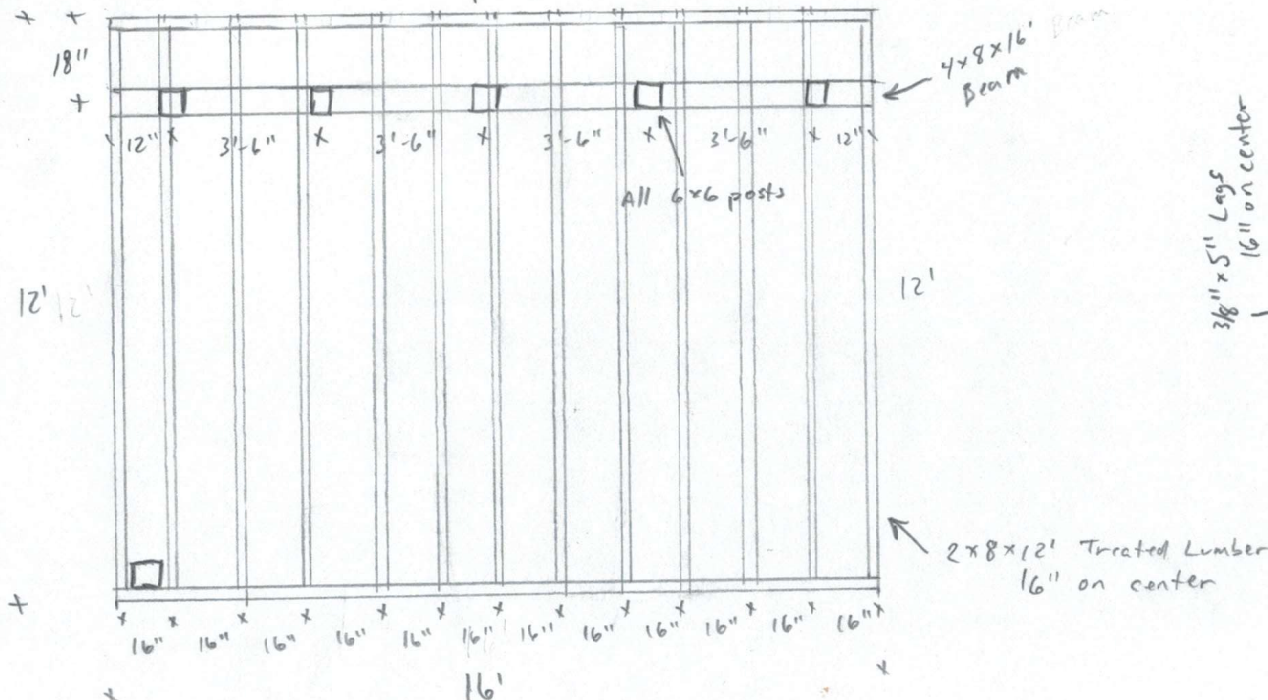
Awning

Front View

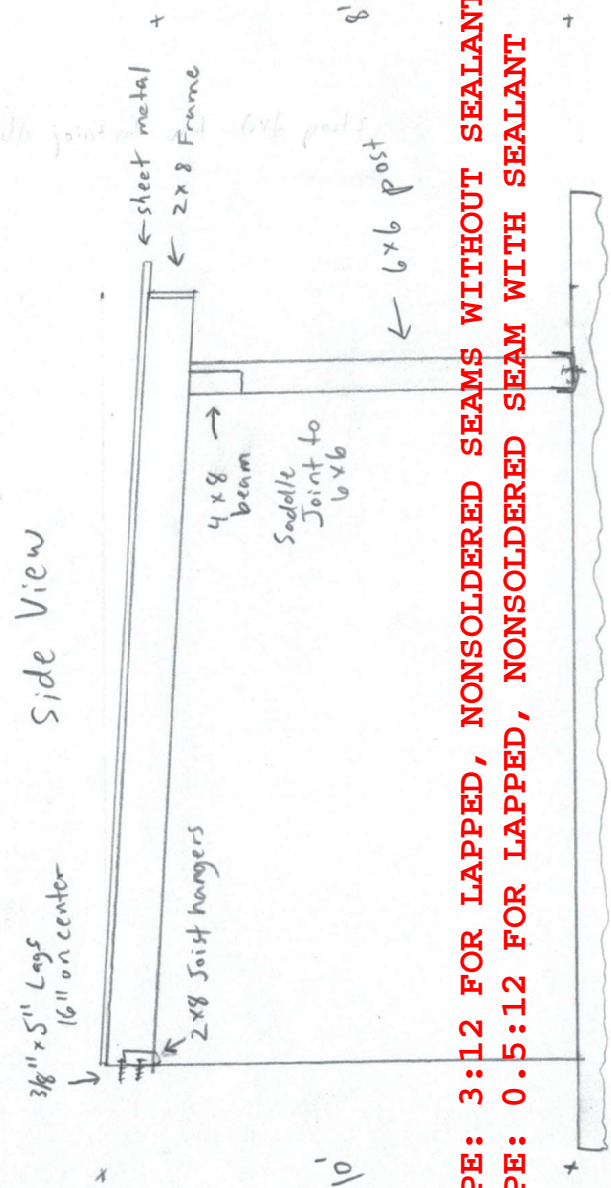


REQUIRED PIERS:
8" DIAMETER
30" DEEP

Top View



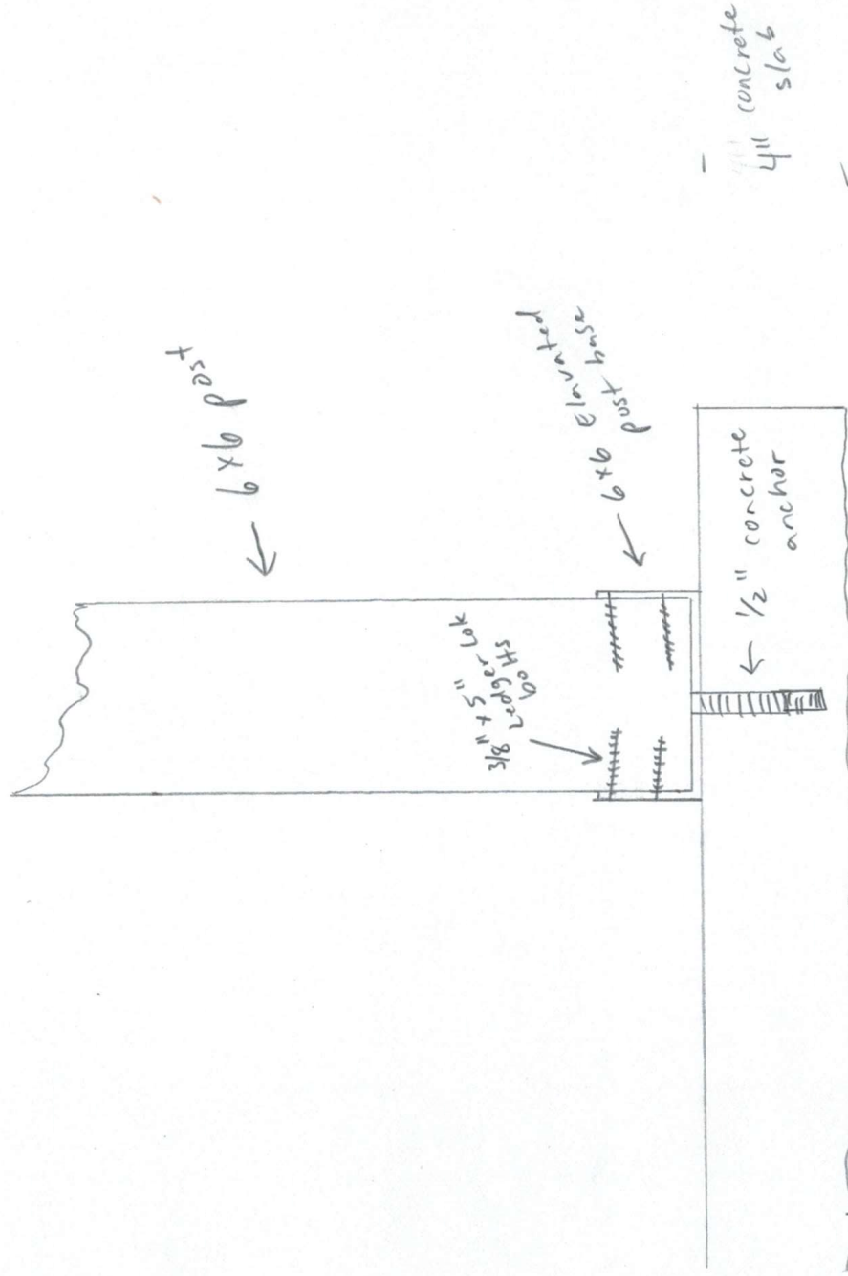
Side View



MINIMUM SLOPE: 3:12 FOR LAPPED, NONSOLDERED SEAMS WITHOUT SEALANT
MINIMUM SLOPE: 0.5:12 FOR LAPPED, NONSOLDERED SEAM WITH SEALANT

Awning + Pergola

Pier View



ONLY TO BE USED FOR PERGOLA
NOT PERMITTED FOR PATIO COVER - PIERS FOR COVER MUST BE FROST PROTECTED

Top View
24'



Pergola

Beam / Rafter View

