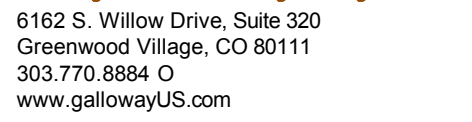
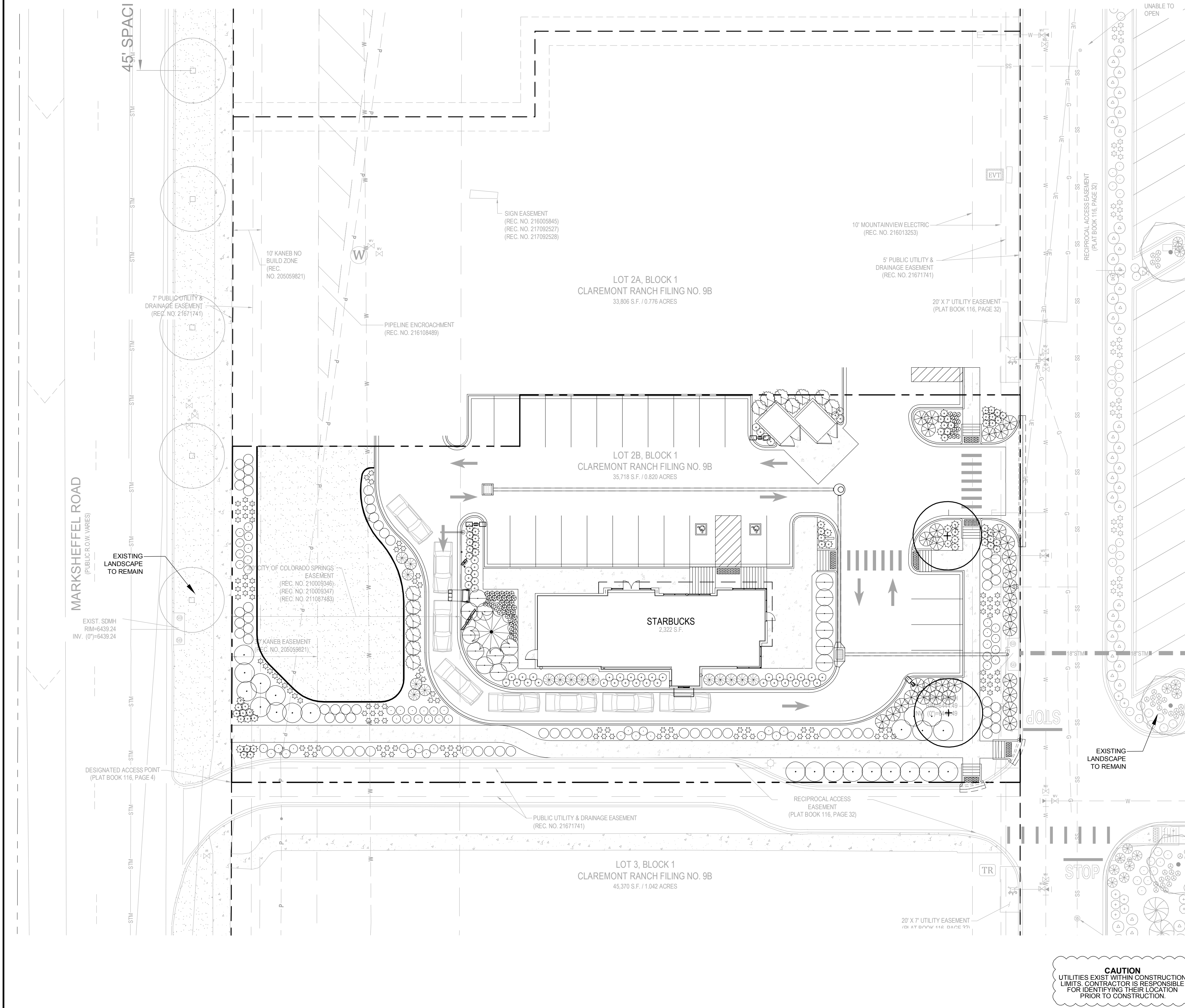


CLAREMONT RANCH FILING NO. 9B
LOT 2B, BLOCK 1
 A PORTION OF SECTION 4, TOWNSHIP 14 SOUTH, RANGE 65 WEST
 OF THE 6TH P.M., EL PASO COUNTY, COLORADO
SITE DEVELOPMENT PLAN



©2017, Galloway & Company, Inc. All Rights Reserved



PLANTING LEGEND						
QTY	LEGEND ABBREV	BOTANIC NAME	COMMON NAME	PLANTING SIZE (MINIMUM)	MATURE SIZE (H X S)	WATER USE (VLL,M,H)
DECIDUOUS TREES						
2	GLTR	GLEDTISIA TRIACANTHOS INERMIS 'SKYLINE'	SKYLINE HONEYLOCUST	2.5" CAL. B&B	50'X30'	L
EVERGREEN TREES						
1	PIPU	PICEA PUNGENS 'BABY BLUE EYES'	BABY BLUE EYES SPRUCE	8' HEIGHT B&B	18'X8'	L/M
DECIDUOUS SHRUBS						
50	CACL	CARYOPTERIS X CLANDONENSIS	BLUE MIST SPIREA	#5 CONT. 18-24"	3'X3'	VL
16	PRBE	PRUNUS BESSEYI 'PAWNEE BUTTES'	PAWNEE BUTTES SAND CHERRY	#5 CONT. 18-24"	18'X8'	VL
23	RHAR	RHUS AROMATICA 'GROW-LOW'	GRO-LOW FRAGRANT SUMAC	#5 CONT. 18-24"	2'X8'	L/M
67	RHTR	RHUS TRILOBATA	THREE LEAF SUMAC	#5 CONT. 18-24"	4'X4'	VL
16	SYPA	SYRINGA PATULA 'MISS KIM'	MISS KIM LILAC	#5 CONT. 18-24"	5'X5'	VL
EVERGREEN SHRUBS						
13	JUCH	JUNIPERUS CHINENSIS 'BLUE POINT'	BLUE POINT JUNIPER	#5 CONT. 3' HEIGHT	12'X6'	VL
32	JUHO	JUNIPERUS HORIZONTALIS 'BLUE CHIP'	BLUE CHIP JUNIPER	#5 CONT. 18-24"	10'X8'	VL
ORNAMENTAL GRASSES						
109	CAAC	CALAMAGROSTIS ACUTIFLORA 'KARL FOERSTER'	FEATHER REED GRASS	#3 CONT.	5'X2'	L
46	PAVI	PANICUM VIRGATUM 'SHENANDOAH'	RED SWITCH GRASS	#3 CONT.	3'X2'	L
28	PEAL	PENNISETUM ALOPECUROIDES 'HAEMELN'	HARDY FOUNTAIN GRASS	#3 CONT.	3'X2'	L
PERENNIALS						
60	SAPA	SALVIA PACHYPHYLLA	MOJAVE SAGE	#1 CONT.	3'X3'	VL
24	SASY	SALVIA SYLVESTRIS 'MAINACHT'	MAY NIGHT SALVIA	#1 CONT.	2'X2'	VL
MISCELLANEOUS						
3,953 SF	---	GRASS SEED	XERISCAPE SEED MIX, SEE NOTES	SEED	---	VL
8,233 SF	---	ROCK COBBLE MULCH	2" x4" MULTI-COLOR ROCK COBBLE MULCH WITH WOOD MULCH RING AROUND ALL PLANT MATERIAL. SEE PLANTING NOTES & DETAILS	MULCH	---	---
215 LF	---	STEEL EDGING	14 GAUGE, 4" HIGH BY 1/8" THICK, BLACK COLOR	EDGER	---	---

SEED NOTES

- | | | |
|---|---|--------------|
| 1. ALL SEED MIXES AVAILABLE THROUGH:
WESTERN NATIVE SEED COMPANY
P.O. BOX 168
COALDALE, CO 81222
(719) 942-3935 | 1. 'XERISCAPE SEED (LAWN) MIX'
SEEDING RATE: 2-4 LBS/1000 SQ.FT. | |
| | % SCIENTIFIC NAME | COMMON NAME |
| | 70 BUCHLOE DACTYLOIDES | BUFFALOGRASS |
| 2. DRYLAND SEED MIXES ARE AVAILABLE AS FOLLOWS:
50% "FOOTHILLS GRASS MIX", 50%-"XERISCAPE WILDFLOWER MIX" | 30 BOUTELOUA GRACILIS | BLUE GRAMA10 |
| SEED ESTABLISHMENT NOTES | | |
| 3. ALL SEED APPLICATIONS SHALL BE DRILL SEEDED, WITH HYDROSLURRY APPLIED OVER THE SEED BED AFTER SEEDING. THE SLURRY MIX SHALL CONTAIN THE FOLLOWING: | 1. THE LANDSCAPE CONTRACTOR SHALL SEED ALL NATIVE SEED AREAS AS SOON AS POSSIBLE AFTER COMPLETION OF GRAVING OPERATIONS. SOIL PREPARATION MEASURES IN AREAS TO BE SEEDED SHALL BE COMPLETED PRIOR TO SEEDING. | |
| LBS./1,000 SQ.FT. | 2. FOR PROPER ESTABLISHMENT, SEED SHALL BE INSTALLED WHEN AT LEAST THREE MONTHS REMAIN IN THE GROWING SEASON. IF LESS THAN THREE MONTHS REMAIN IN THE GROWING SEASON AT THE TIME OF SEEDING, THE LANDSCAPE CONTRACTOR SHALL IMMEDIATELY NOTIFY THE LANDSCAPE ARCHITECT AND OWNER. THE IRRIGATION SYSTEM FOR SEEDED AREAS SHALL BE FULLY OPERATIONAL AT THE TIME OF SEEDING. | |
| WOOD FIBER MULCH | 3. THE CONTRACTOR SHALL BE SOLELY RESPONSIBLE FOR ADDITIONAL CORRECTIVE MEASURES AT HIS OWN COST, TO SATISFY ESTABLISHMENT REQUIREMENTS AND ENSURE TIMELY CLOSOUT. THESE MEASURES MAY INCLUDE, AT THE OWNER'S OPTION, RESEEDING OF SPARSELY GERMINATED AREAS AND/OR INSTALLATION OF SOD IN ALL SEEDED AREAS. | |
| 15-15-15 ORGANIC FERTILIZER | | |
| ORGANIC CINDER | | |

[illegible]

Project No:	EDI000040
Drawn By:	ACP
Checked By:	DTT
Date:	

LANDSCAPE PLAN

L1.1