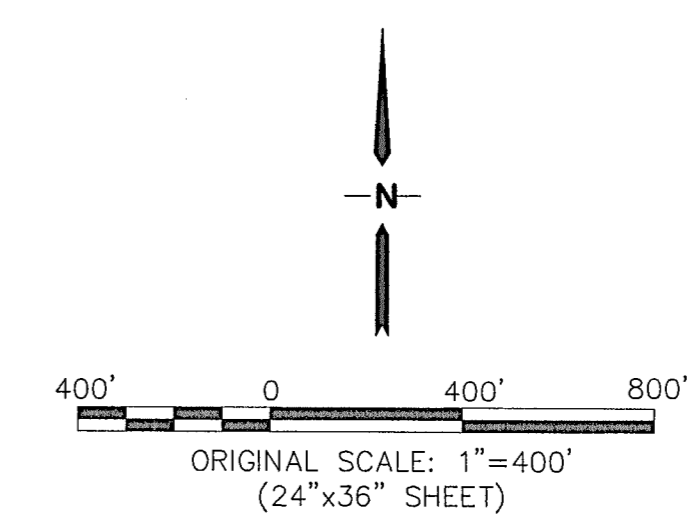
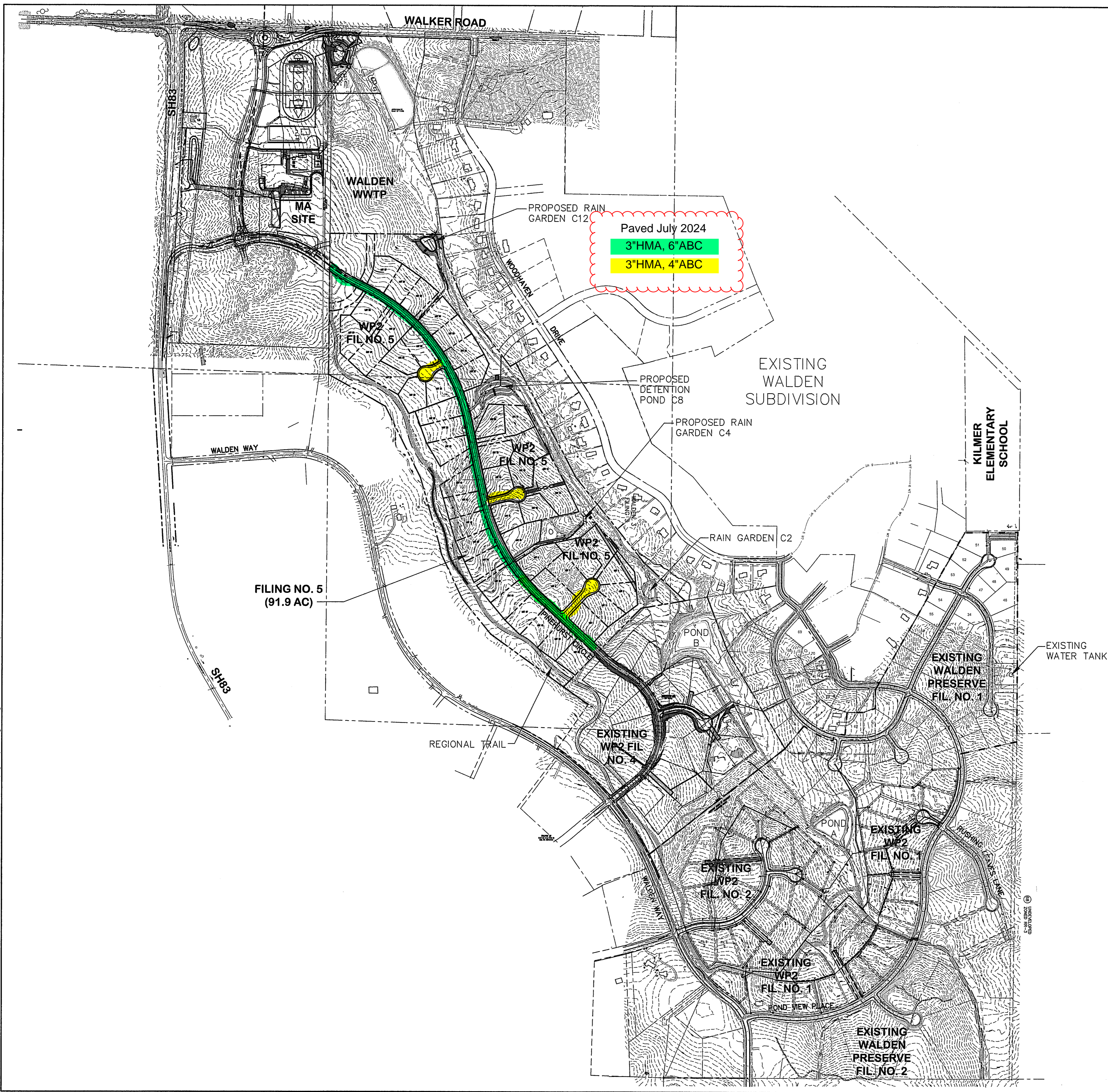
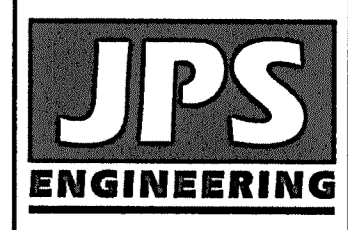


C:\Users\Owner\Dropbox\japrojects\040201\walden\dwg\ctul\WALDEN PRESERVE 2\Fig 5\C1.dwg Aug 15, 2022 -- 3:56pm

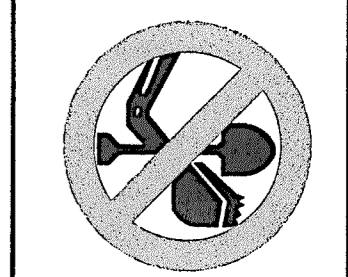


# WALDEN PRESERVE 2 - FILING NO. 5

## OVERALL SITE PLAN



19 E. Willamette Ave.  
Colorado Springs, CO  
80903  
PH: 719-477-9429  
FAX: 719-471-0766  
www.jpsegr.com



CALL UTILITY NOTIFICATION  
CENTER OF COLORADO  
1-800-922-1987  
CALL 2-BUSINESS DAYS IN ADVANCE  
BEFORE YOU DIG, GRADE, OR EXCAVATE  
FOR THE MARKING OF UNDERGROUND  
MEMBER, UTILITIES.

NO.	REVISION	BY	DATE
1	FINAL PLAT SUBMITTAL	JPS	1/10/22
2	EPC COMMENTS	JPS	7/6/22

HORIZ. SCALE: 1"=400'	DRAWN: BJJ
VERT. SCALE: N/A	DESIGNED: JPS
SURVEYED: RAMPART	CHECKED: JPS
CREATED: 9/14/20	LAST MODIFIED: 8/15/22
PROJECT NO: 040201	MODIFIED BY: MSP
SHEET:	

C1