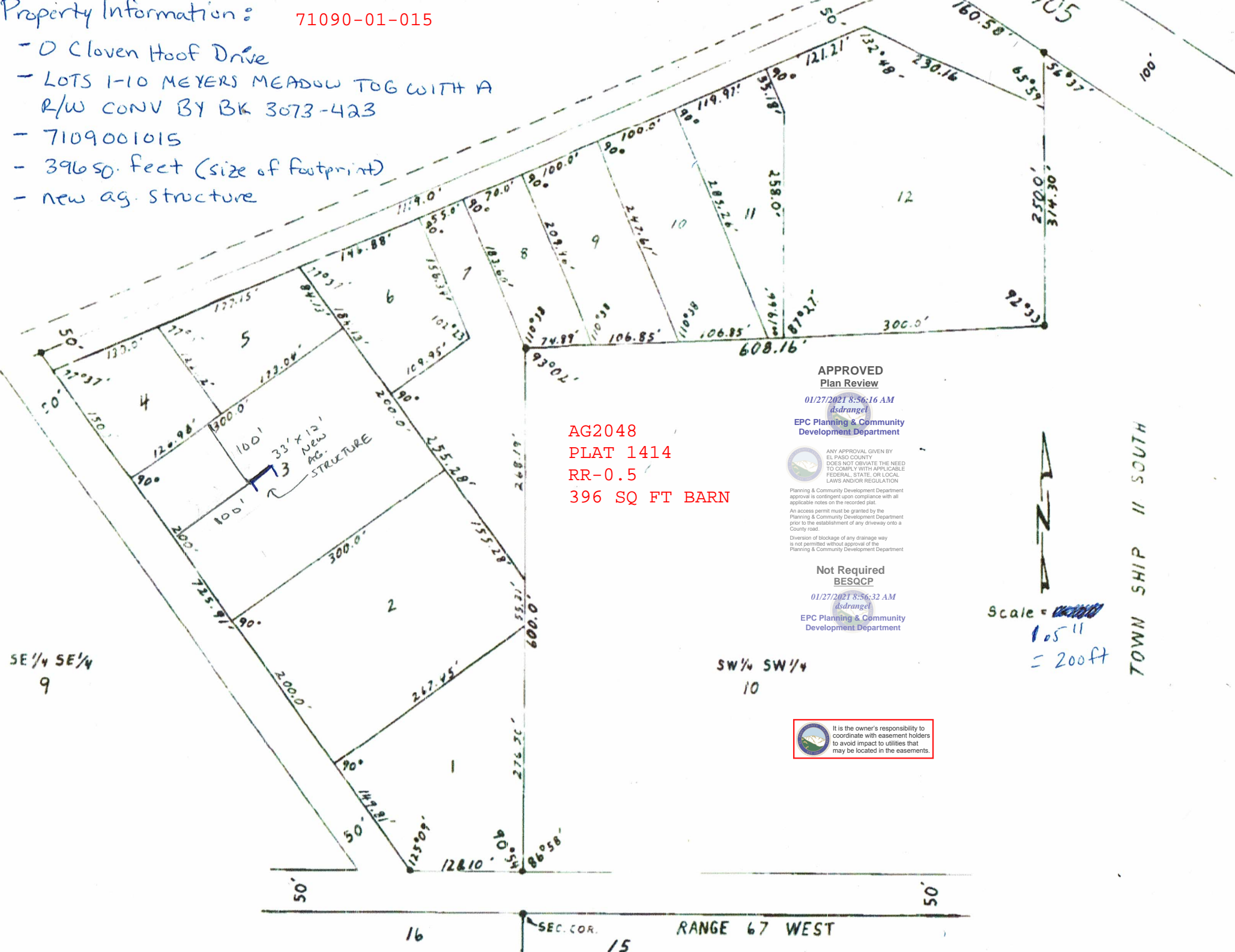


Property Information: 71090-01-015

- O Cloven Hoof Drive
- LOTS 1-10 MEYERS MEADOW TCG WITH A R/W CONV BY BK 3073-423
- 7109001015
- 396 sq. feet (size of footprint)
- new ag. structure



AG2048
 PLAT 1414
 RR-0.5
 396 SQ FT BARN

APPROVED
 Plan Review

01/27/2021 8:56:16 AM
 dsdrangel

EPC Planning & Community
 Development Department



ANY APPROVAL GIVEN BY
 EL PASO COUNTY
 DOES NOT OBVIATE THE NEED
 TO COMPLY WITH APPLICABLE
 FEDERAL, STATE, OR LOCAL
 LAWS AND/OR REGULATION

Planning & Community Development Department
 approval is contingent upon compliance with all
 applicable notes on the recorded plat.
 An access permit must be granted by the
 Planning & Community Development Department
 prior to the establishment of any driveway onto a
 County road.

Diversion of blockage of any drainage way
 is not permitted without approval of the
 Planning & Community Development Department

Not Required
 BESQCP

01/27/2021 8:56:32 AM
 dsdrangel

EPC Planning & Community
 Development Department



It is the owner's responsibility to
 coordinate with easement holders
 to avoid impact to utilities that
 may be located in the easements.



Scale = ~~1" = 100'~~
 1" = 11'
 = 200ft

TOWNSHIP 11 SOUTH

SE 1/4 SE 1/4
 9

SW 1/4 SW 1/4
 10

16

15

RANGE 67 WEST

SEC. COR.