

**FLYING HORSE NORTH FILING NO. 9**  
**PUD PLAN & PRELIMINARY PLAN MAJOR AMENDMENT**  
A PORTION OF SECTIONS 34 (NE 1/4), 35 (NW 1/4, & NE 1/4) AND 36 TOWNSHIP 11 SOUTH, RANGE 66 WEST  
 AND A PORTION OF SECTIONS 30 (SW 1/4, SE 1/4, & NE 1/4) AND 31 (SW 1/4, NW 1/4, & NE 1/4), TOWNSHIP 11 SOUTH, RANGE 65 WEST OF  
 THE SIXTH PRINCIPAL MERIDIAN, COUNTY OF EL PASO, STATE OF COLORADO

**LEGEND**

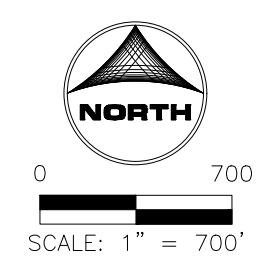
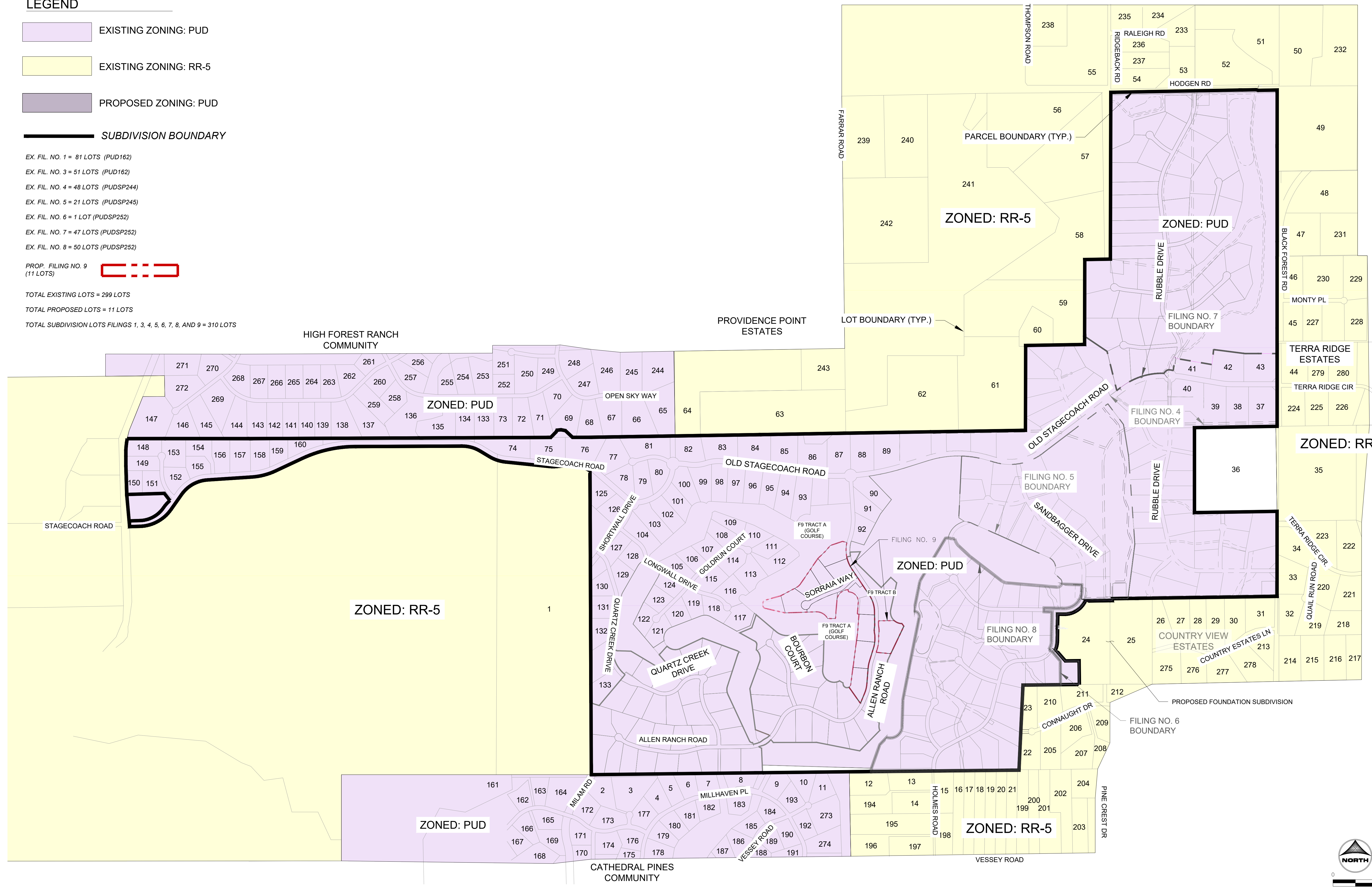
- EXISTING ZONING: PUD
- EXISTING ZONING: RR-5
- PROPOSED ZONING: PUD

**—** SUBDIVISION BOUNDARY

- EX. FIL. NO. 1 = 81 LOTS (PUD162)
- EX. FIL. NO. 3 = 51 LOTS (PUD162)
- EX. FIL. NO. 4 = 48 LOTS (PUDSP244)
- EX. FIL. NO. 5 = 21 LOTS (PUDSP245)
- EX. FIL. NO. 6 = 1 LOT (PUDSP252)
- EX. FIL. NO. 7 = 47 LOTS (PUDSP252)
- EX. FIL. NO. 8 = 50 LOTS (PUDSP252)

PROP. FILING NO. 9  
 (11 LOTS)

TOTAL EXISTING LOTS = 299 LOTS  
 TOTAL PROPOSED LOTS = 11 LOTS  
 TOTAL SUBDIVISION LOTS FILINGS 1, 3, 4, 5, 6, 7, 8, AND 9 = 310 LOTS



PCD FILE NO.: PUDSP\_

DRAWN BY: DLH	JOB DATE: 4/2/2026	BAR IS ONE INCH ON OFFICIAL DRAWINGS.
APPROVED: KMH	JOB NUMBER: 2502599	0" = 1"
CAD DATE: 4/2/2026		IF NOT ONE INCH, ADJUST SCALE ACCORDINGLY.
CAD FILE: J:\2025\2502599\CAD\DWG\CIF9 Major PUD Amendment\Zoning_Map		

NO.	DATE	BY	REVISION DESCRIPTION

**HRGreen**  
 HR GREEN - COLORADO SPRINGS  
 1975 RESEARCH PARKWAY SUITE 160  
 COLORADO SPRINGS, CO 80920  
 PHONE: 719.300.4140  
 FAX: 713.965.0044



**FLYING HORSE NORTH FILING NO. 9**  
**PUD & PRELIMINARY PLAN MAJOR AMENDMENT**  
 PRI #2, LLC.  
 EL PASO COUNTY, CO

**MAJOR PUD AMENDMENT**  
**ZONING MAP**

**SHEET**  
**ZN**  
**4**

LYON, RICHELIE - 4/2/2026 9:07 AM