

# CIRCLE K AT HIGHWAY 24 & MERIDIAN ROAD PRELIMINARY PLAN

A PORTION OF THE SE 1/4 OF SECTION 12, TOWNSHIP 13 SOUTH, RANGE 65 WEST OF THE 6TH P.M.  
COUNTY OF EL PASO COUNTY, STATE OF COLORADO

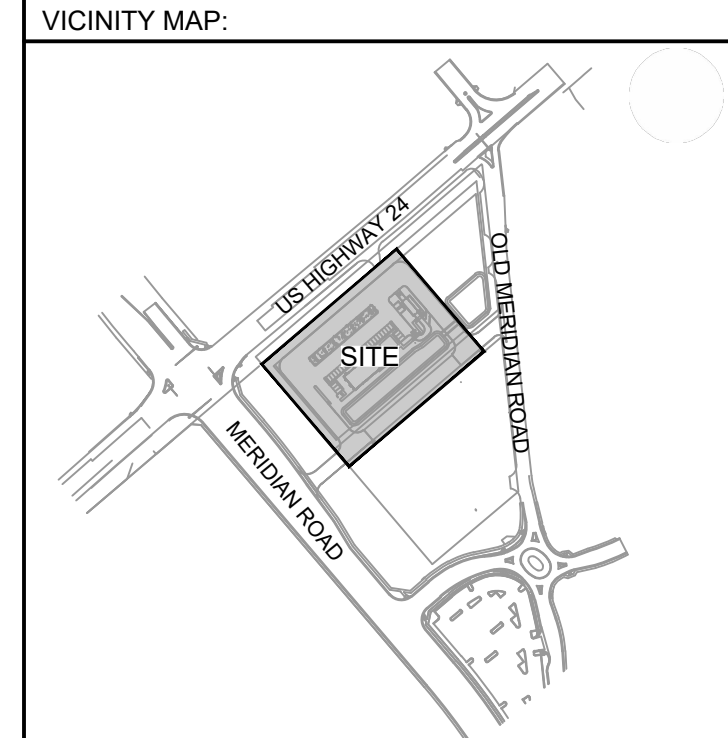


**Matrix**  
Excellence by Design  
2435 RESEARCH PARKWAY, SUITE 300  
COLORADO SPRINGS, CO 80920  
PHONE: (719) 575-0100

**LAND DEVELOPMENT**  
CONSULTANTS, LLC  
950 S. CHERRY ST., SUITE 512  
DENVER, CO 80246

OWNER/DEVELOPER:  
**CIRCLE K**  
ROCKY MOUNTAINS DIVISION  
5500 S QUEBEC STREET, SUITE 100  
GREENWOOD VILLAGE, CO 80111  
PHONE: (720) 758-6223

SEAL  
  
FOR AND ON BEHALF OF MATRIX DESIGN GROUP, INC



PROJECT:  
**CIRCLE K STORES INC.**  
PRELIMINARY PLAN  
HIGHWAY 24 & MERIDIAN ROAD  
FALCON, CO

REVISION HISTORY:

NO.	DATE	DESCRIPTION	BY

DRAWING INFORMATION:  
PROJECT NO: 21.1207.037  
DRAWN BY: LCB  
CHECKED BY: NMS  
DESIGNED BY: NMS

SHEET TITLE:  
**PRELIMINARY  
GRADING PLAN**

SHEET 1 OF 1  
**GR01**  
ISSUE DATE: AUGUST 2021

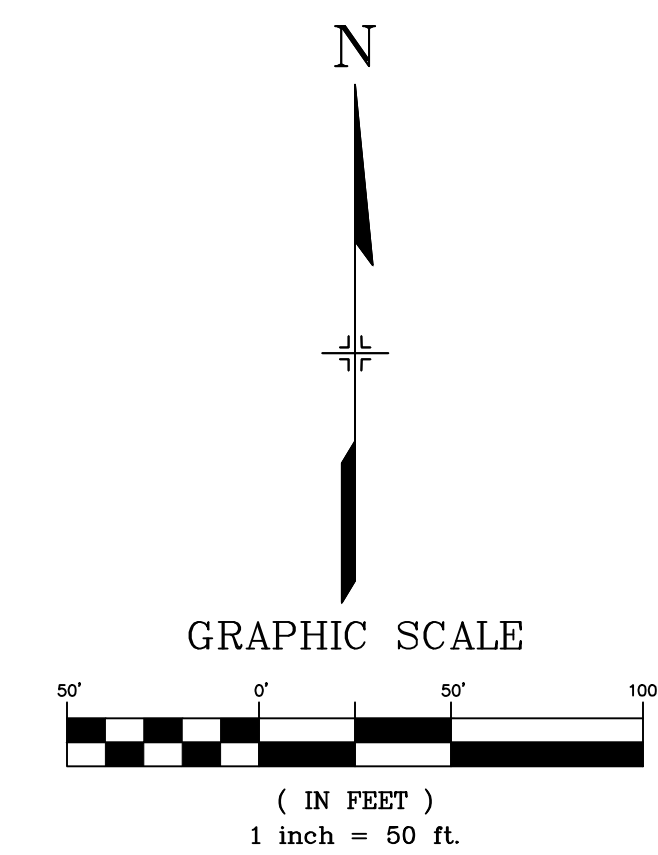
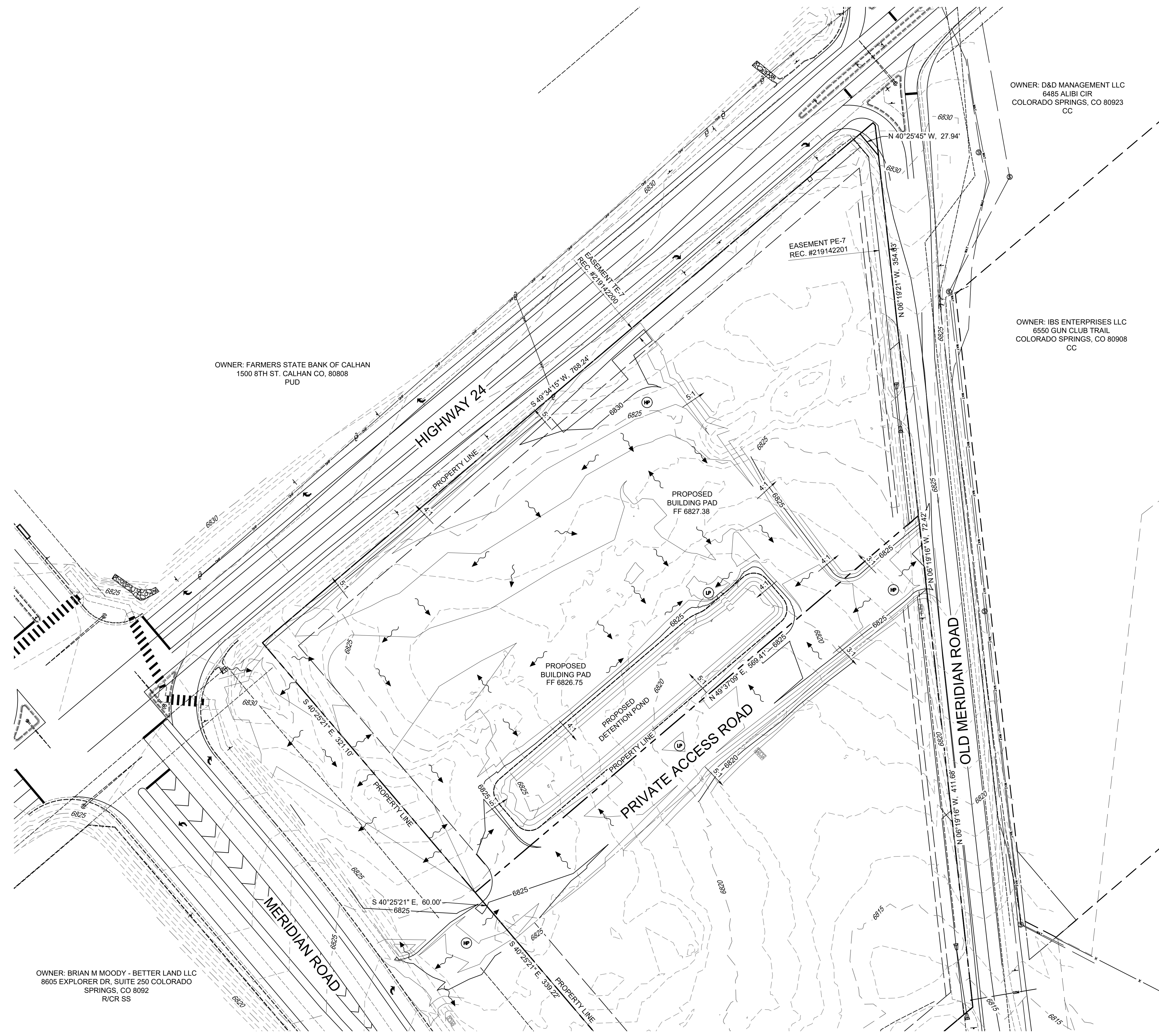
## GRADING LEGEND

- PROPOSED CONTOURS
- EXISTING CONTOURS
- PROPERTY BOUNDARY
- CUT-FILL LINE
- SLOPE ARROW
- HIGH POINT / LOW POINT

Add standard EPC notes and signature blocks  
Show all inlet protections for private road  
Show temp sediment basin  
Show inlet protections for Old and New Meridian roads  
Show VTC for access point  
Show area of seeding  
Add legend symbols  
Please ensure checklist items applicable to initial site clearance, demo etc are included.

Grading & Erosion Control plan, detailed grading sheets included Final Plat Offsite CDs  
EPC notes and signature blocks included on Final Plat Offsite CDs Cover Sheet  
BMPs and Legend included on Grading & Erosion Control plan

Note  
Additional comments and final approval of the GEC plan will be conducted as part of the Site Development Plan PPR22-30 review unless early grading is being requested.  
Run off and water quality controls must be in place prior to road construction or paving.



FILE LOCATION: S:\CIRCLE K HWY 24 & MERIDIAN\DWG\PLAN SETS\PRELIMINARY PLANS\GR01.DWG