

## MEMO

**Subject:        Grazing Yak Solar Project; Summary of Project Lighting**

---

### Summary

The Grazing Yak Solar Project (Project) is a proposed photovoltaic (PV) solar facility located approximately four miles southeast of the Town of Calhan, El Paso County, Colorado. The Project is located on Washington Road, approximately 0.5 mile west of its intersection with McQueen Road. The Project consists of a 35 MW photovoltaic solar array and a 1-mile underground collection line connecting the Project with the existing Golden West Wind project substation. Power from the existing Golden West substation will deliver power to Colorado Springs Utilities via an existing 29-mile transmission line to the Jackson Fuller Substation. The Project also includes 12 inverter skids, site access roads, and other necessary ancillary features.

If required during construction and emergency maintenance, temporary lighting would be minimal and localized to the immediate construction/maintenance site (see attached *Lighting Plan*). Lighting may also be used in the dusk hours to safely finish tasks and for workers to leave. Temporary construction or emergency maintenance lighting would be removed from the site upon completion of the work.

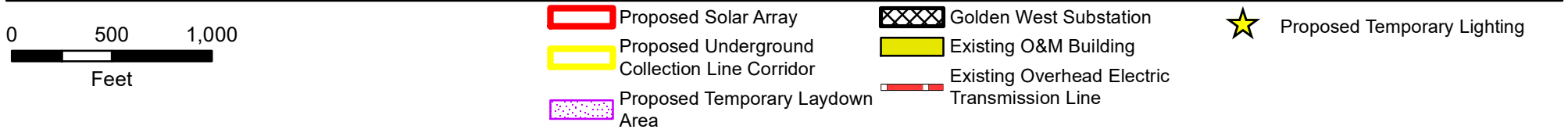
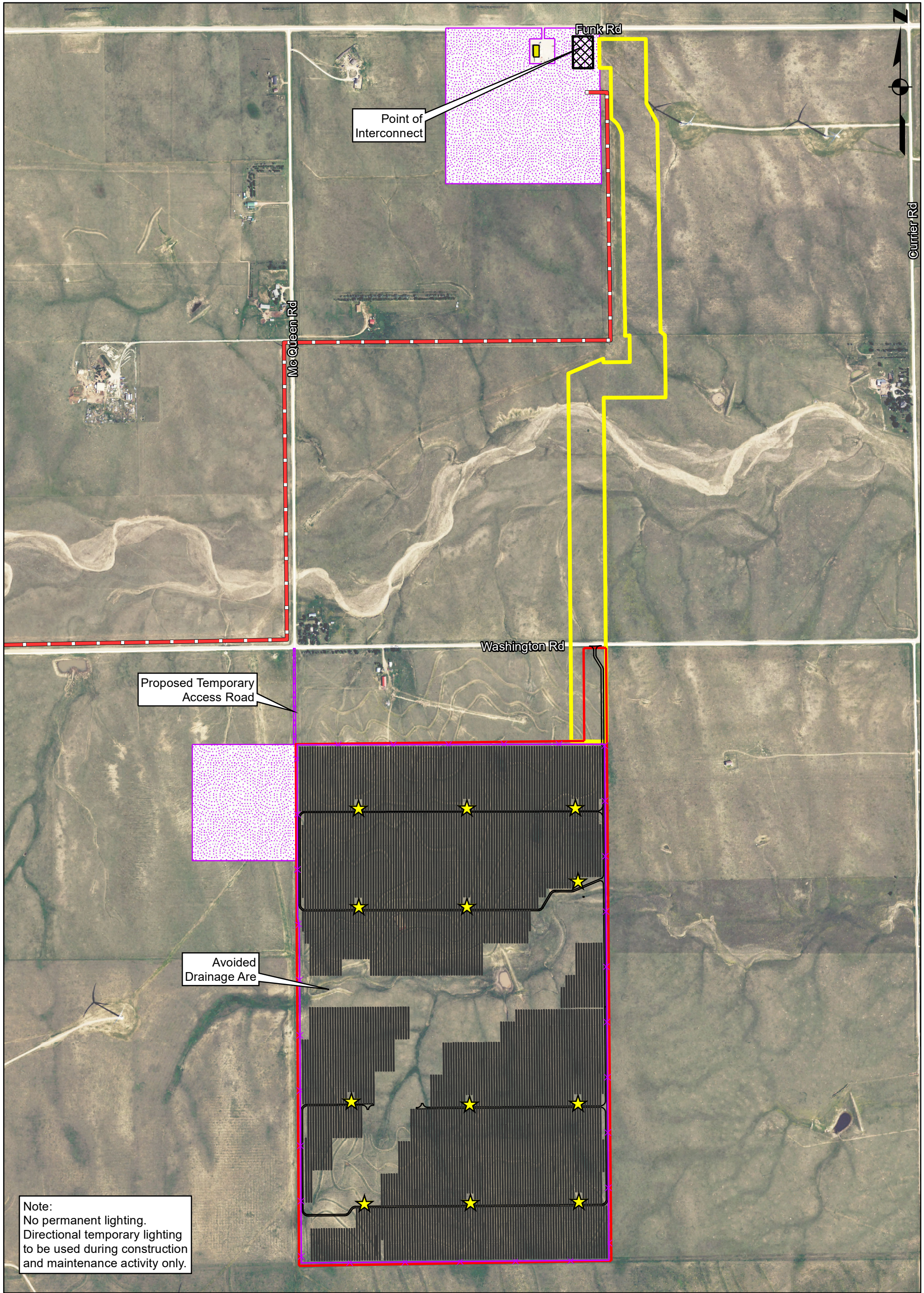
During operations, PV solar facilities typically do not have nighttime lighting unless emergency maintenance is required. While the facility would not be staffed on a full-time basis, adequate lighting would be required for worker safety during nighttime visits, if required. It is anticipated that light from maintenance trucks would be used during a maintenance situation that might occur during the nighttime. If temporary lighting is required, it would be placed in a manner compliant with Chapter 6 of the El Paso County Land Development Code and regulations of the Occupational Health and Safety Administration and other applicable codes, standards, laws and regulations.

Temporary light trees would be used, downcast and positioned and/or shielded from oncoming traffic and residences in the vicinity of the Project site, as necessary. Cutoff-type luminaires would be used where possible. Individual light sources would not exceed 150,000 lumens per light source (typical of a 1250W metal halide light). Light standards would not exceed 24 feet in height. Generators used to power light sources would not exceed 70 dB at 25 feet from the source.

No changes to lighting the existing Golden West Wind project substation will be made, and there will be no lighting of the underground collection line easement.

provided the  
emergency locations  
and construction  
lighting locations per  
condition of approval  
of the WSE-O.  
Discussed with the  
WSE-O.







## dsdparsons (1)

provided the emergency locations and construction lighting locations per condition of approval of the WSE-O. Diagram attached to this letter is ok

provided the emergency locations and construction lighting locations per condition of approval of the WSE-O. Diagram attached to this letter is ok