

DETAILED GRADING LEGEND

- 0000.00 FG FINISHED GRADE ELEVATION
- 0000.00 TC TOP OF CURB ELEVATION
- 0000.00 TP TOP OF PAVEMENT ELEVATION
- 0000.00 TW FG @ TOP OF RETAINING WALL
- 0000.00 BW FG @ BOTTOM OF RETAINING WALL
- 0000.00 ME MATCH EXISTING GRADE
- 0000.00 TE TOP ELEVATION OF STRUCTURE
- 0000.00 XX HIGH POINT HIGH POINT AT SPECIFIC CALLOUT
- 0000.00 XX LOW POINT LOW POINT AT SPECIFIC CALLOUT
- 1.00% SLOPE INDICATOR



PANDA EXPRESS, INC.
1683 Walnut Grove Ave.
Rosemead, California
91770
Telephone: 626.799.9898
Facsimile: 626.372.8288

All ideas, designs, arrangement and plans indicated or represented by this drawing are the property of Panda Express Inc. and were created for use on this specific project. None of these ideas, designs, arrangements or plans may be used by or disclosed to any person, firm, or corporation without the written permission of Panda Express Inc.

REVISIONS:

| | |
|--|--|
| | |
| | |
| | |
| | |
| | |
| | |
| | |
| | |
| | |
| | |

ISSUE DATE:

1ST PERMIT/BID SET 07-15-2021

| | |
|--|--|
| | |
| | |
| | |
| | |
| | |
| | |
| | |
| | |
| | |
| | |

DRAWN BY: JA

PANDA PROJECT #: S8-22-D8137

PANDA STORE #: -

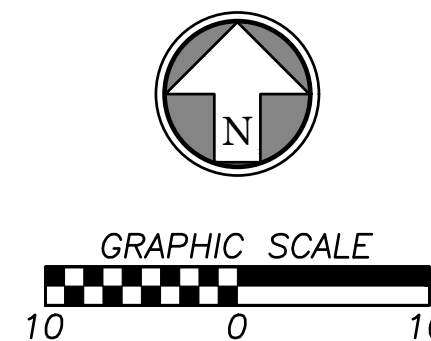
ARCH PROJECT #: 20044.016



8813 PENROSE LANE, SUITE 400
LENEXA, KS 66218
ph: 913.649.8181 • fx: 913.649.1275

PANDA EXPRESS

TRUE WARM & WELCOME
E WOODMEN RD & MERIDIAN RD, LOT 8
FALCON, CO 80831



CIVIL ENGINEERING / SURVEYING / UTILITIES
7101 College Blvd., Suite 400
Overland Park, Kansas 66210
p. (913) 663-1900
BHC is a trademark of Brangardt Rosenfield & Company, P.A.

DETAILED GRADING PLAN

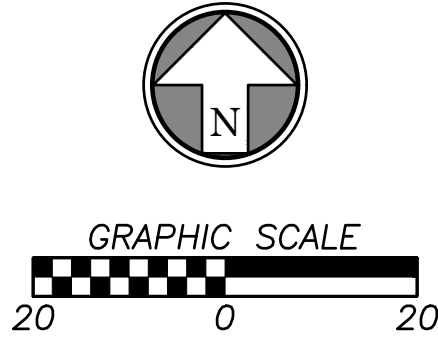
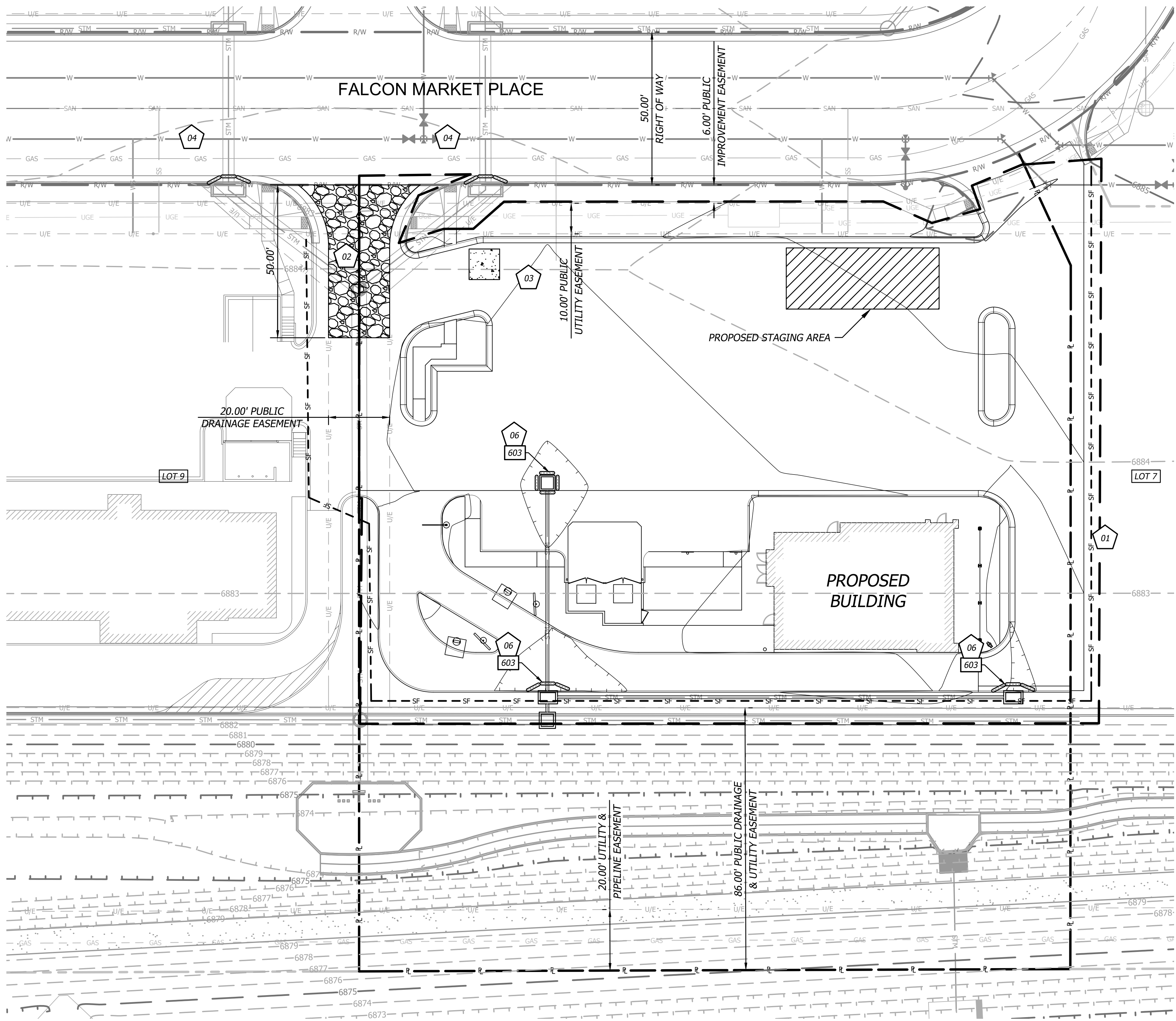
C3.1

TRUE WARM & WELCOME 2300 R5

PERMIT/BID SET 07-15-2021

EL PASO COUNTY EROSION CONTROL NOTES

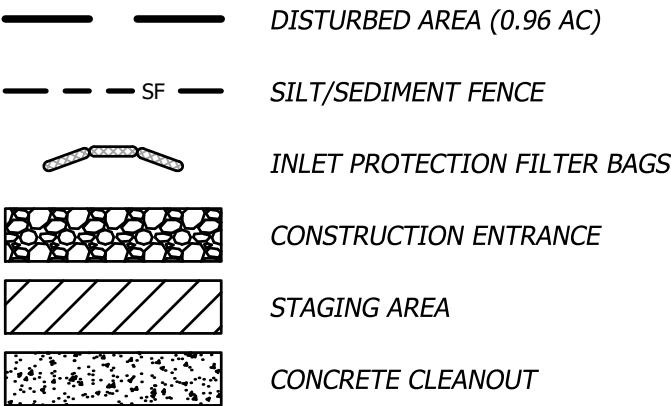
SEE C3.2 FOR EROSION CONTROL NOTES.



EROSION & SEDIMENT CONTROL STAGING CHART

| Phase | Project Stage | BMP Plan Ref. No. | BMP Description | Remove After Stage: | Notes: |
|-------------------------|--|-------------------|--------------------------------------|---------------------|--|
| Phase I (PRE-CON) | A – Place BMP's Prior to Land Disturbance | 01 | Perimeter Silt Fence | E | Place as shown on plan |
| | | 02 | Construction Entrance & Staging Area | D | Place as shown on plan |
| | | 03 | Concrete Wash-Out | D | Place as shown on plan |
| | | 04 | Existing Inlet Protection | E | Place as shown on plan |
| Phase II (MID-CON) | B – After Stripping, Grubbing, & Mass Grading | 05 | Interior Silt Fence | E | Place as shown on plan |
| | C – After Utility Storm Sewer Construction | 06 | Storm Inlet Protection | D | Place as shown on plan |
| Phase III (POST-CON) | D – After Construction of Building and Parking Lot | 07 | Steep Slope Protection | E | Place as shown on plan |
| | E – Final Grading, Paving & Landscaping | 08 | Final Seeding, Sod, and Landscaping | N/A | Silt fencing & inlet protect may be removed once seed & sodded areas are established on 80% of site. |

EROSION CONTROL LEGEND



DETAILS

SEE EROSION CONTROL DETAIL SHEET FOR THE FOLLOWING

- 600 TEMPORARY CONSTRUCTION ENTRANCE
- 601 FILTER FABRIC SILT FENCE
- 603 STORM INLET PROTECTION
- 604 CONCRETE WASH-OUT



PANDA EXPRESS, INC.
 1683 Walnut Grove Ave.
 Rosemead, California 91770
 Telephone: 626.799.9898
 Facsimile: 626.372.8288

All ideas, designs, arrangement and plans indicated or represented by this drawing are the property of Panda Express Inc. and were created for use on this specific project. None of these ideas, designs, arrangements or plans may be used by or disclosed to any person, firm, or corporation without the written permission of Panda Express Inc.

REVISIONS:

| | |
|--|--|
| | |
| | |
| | |
| | |
| | |
| | |
| | |
| | |
| | |
| | |

ISSUE DATE:

| | |
|--------------------|------------|
| 1ST PERMIT/BID SET | 07-15-2021 |
|--------------------|------------|

| | |
|--|--|
| | |
| | |
| | |
| | |
| | |
| | |
| | |
| | |
| | |
| | |

DRAWN BY: JA

PANDA PROJECT #: S8-22-D8137
 PANDA STORE #: -
 ARCH PROJECT #: 20044.016



hckloverarchitect
 8813 PENROSE LANE, SUITE 400
 LENEXA, KS 66219
 ph: 913.649.8181 • fx: 913.649.1275

PANDA EXPRESS
 TRUE WARM & WELCOME
 E WOODMEN RD & MERIDIAN RD, LOT 8
 FALCON, CO 80831

MID-CON EROSION CONTROL

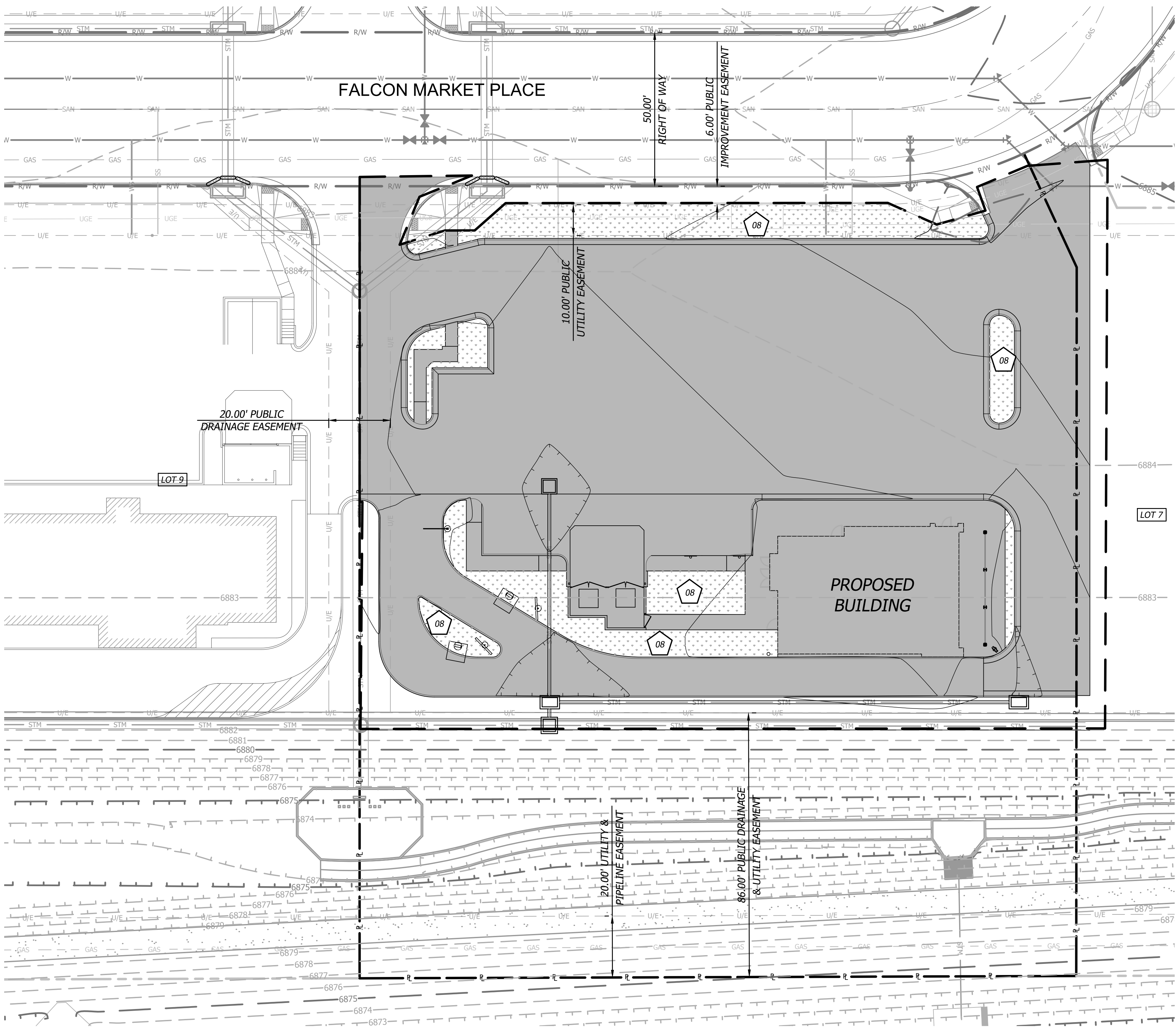
C3.3

TRUE WARM & WELCOME 2300 R5

PERMIT/BID SET 07-15-2021

EL PASO COUNTY GRADING AND EROSION CONTROL PLANS

SEE C3.2 FOR EROSION CONTROL NOTES.



EROSION & SEDIMENT CONTROL STAGING CHART

| Phase | Project Stage | BMP Plan Ref. No. | BMP Description | Remove After Stage: | Notes: |
|-------------------------|--|-------------------|--------------------------------------|---------------------|--|
| Phase I (PRE-CON) | A – Place BMP's Prior to Land Disturbance | 01 | Perimeter Silt Fence | E | Place as shown on plan |
| | | 02 | Construction Entrance & Staging Area | D | Place as shown on plan |
| | | 03 | Concrete Wash-Out | D | Place as shown on plan |
| | | 04 | Existing Inlet Protection | E | Place as shown on plan |
| Phase II (MID-CON) | B – After Stripping, Grubbing, & Mass Grading | 05 | Interior Silt Fence | E | Place as shown on plan |
| | C – After Utility Storm Sewer Construction | 06 | Storm Inlet Protection | D | Place as shown on plan |
| Phase III (POST-CON) | D – After Construction of Building and Parking Lot | 07 | Steep Slope Protection | E | Place as shown on plan |
| | E – Final Grading, Paving & Landscaping | 08 | Final Seeding, Sod, and Landscaping | N/A | Silt fencing & inlet protect may be removed once seed & sodded areas are established on 80% of site. |

EROSION CONTROL LEGEND

- DISTURBED AREA (0.96 AC)
- SILT/SEDIMENT FENCE
- INLET PROTECTION FILTER BAGS
- CONSTRUCTION ENTRANCE
- STAGING AREA
- CONCRETE CLEANOUT

DETAILS

SEE EROSION CONTROL DETAIL SHEET FOR THE FOLLOWING

- 600 TEMPORARY CONSTRUCTION ENTRANCE
- 601 FILTER FABRIC SILT FENCE
- 603 STORM INLET PROTECTION
- 604 CONCRETE WASH-OUT



PANDA EXPRESS, INC.
1683 Walnut Grove Ave.
Rosemead, California
91770
Telephone: 626.799.9898
Facsimile: 626.372.8288

All ideas, designs, arrangement and plans indicated or represented by this drawing are the property of Panda Express Inc. and were created for use on this specific project. None of these ideas, designs, arrangements or plans may be used by or disclosed to any person, firm, or corporation without the written permission of Panda Express Inc.

REVISIONS:

ISSUE DATE:

1ST PERMIT/BID SET 07-15-2021

DRAWN BY: JA

PANDA PROJECT #: S8-22-D8137

PANDA STORE #: -

ARCH PROJECT #: 20044.016



hckloverarchitect
8813 PENROSE LANE, SUITE 400
LENEXA, KS 66219
ph: 913.649.8181 • fx: 913.649.1275

PANDA EXPRESS
TRUE WARM & WELCOME
E WOODMEN RD & MERIDIAN RD, LOT 8
FALCON, CO 80831

POST-CON EROSION CONTROL

C3.4

TRUE WARM & WELCOME 2300 R5

PERMIT/BID SET 07-15-2021