

Symbol	Label	Quantity	Catalog Number	Description	Filename	Lumens Per Lamp	Wattage	Efficiency
□	A	2	SLM-LED-18L-SIL-FT-40-70CRI-IL	CONTACT RYAN ZINSELMEIER-314-531-2600	SLM-LED-18L-SIL-FT-40-70CRI-IL.ies	12046	148.5	100%
□	B	1	SLM-LED-18L-SIL-3-40-70CRI-IL	CONTACT RYAN ZINSELMEIER-314-531-2600	SLM-LED-18L-SIL-3-40-70CRI-IL.ies	13767	148.5	100%
□	D	2	SLM-LED-18L-SIL-FT-40-70CRI-IL	CONTACT RYAN ZINSELMEIER-314-531-2600	SLM-LED-18L-SIL-FT-40-70CRI-IL.ies	12046	297	100%

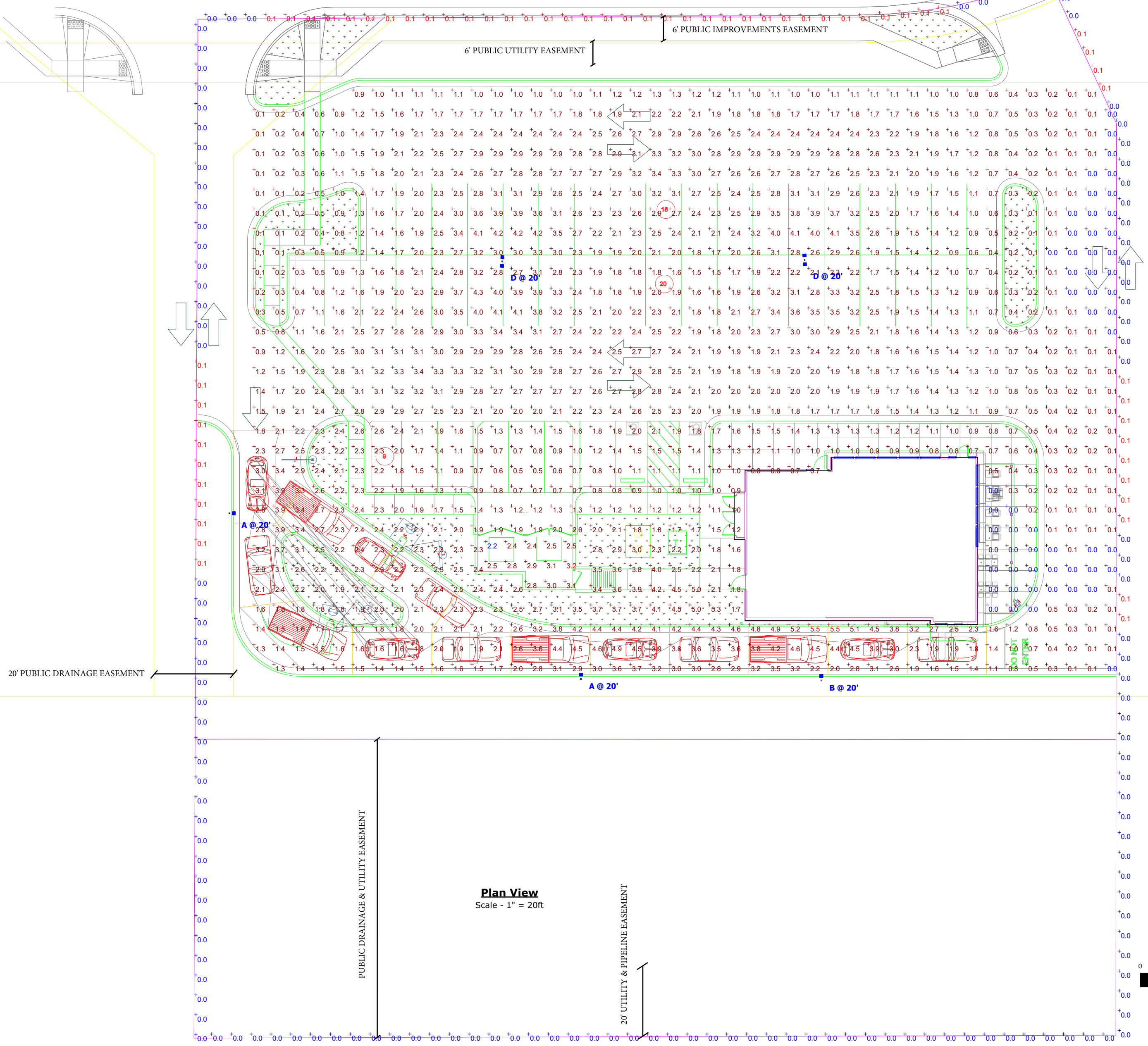
Description	Symbol	Avg	Max	Min	Max/Min	Avg/Min
CALC SUMMARY- PAVED SURFACE	+	1.8 fc	5.5 fc	0.0 fc	N/A	N/A
CALC SUMMARY- PROPERTY LINE	+	0.0 fc	0.1 fc	0.0 fc	N/A	N/A
TRASH ENCLOSURE	+	2.7 fc	3.2 fc	2.2 fc	1.5:1	1.2:1

Note
 1. MOUNTING HEIGHT OF 20'
 2. CALCULATIONS TAKEN AT GROUND LEVEL
 3. CONTACT VILLA LIGHTING- RYAN ZINSELMEIER- RYAN.ZINSELMEIER@VILLALIGHTING.COM- 314-531-2600

Property Owner:
 Panda Express, Inc.
 1683 Walnut Grove Ave.
 Rosemead, CA 91770
 626-799-9898
 alex.phelps@pandarg.com

Authorized Representative:
 HCKlover Architect
 8813 Penrose Lane Suite 400
 Lenexa, KS 66219
 hcpermitting@klover.net

Property Address:
 7545 Falcon Marketplace
 Peyton, CO 80831



PANDA EXPRESS
 FALCON, CO

Designer
 R. ZINSELMEIER
 Date
 04/25/2022
 Scale
 NOTED
 Drawing No.
 Summary
 1 of 1



Catalog #: _____ Project: _____

Prepared By: _____ Date: _____ Type: _____

Slice Medium (SLM)

Outdoor LED Area Light



OVERVIEW	
Lumen Package	9,000 - 48,000
Wattage Range	63 - 401
Efficacy Range (LPW)	112 - 156
Weight lbs(kg)	30 (13.6)

QUICK LINKS

[Ordering Guide](#)
[Performance](#)
[Photometrics](#)
[Dimensions](#)

FEATURES & SPECIFICATIONS

Construction

- Rugged die-cast aluminum housing contains factory prewired driver and optical unit. Cast aluminum wiring access door located underneath.
- Fixtures are finished with LSI's DuraGrip® polyester powder coat finishing process. The DuraGrip finish withstands extreme weather changes without cracking or peeling. Other standard LSI finishes available. Consult factory.
- Shipping weight: 37 lbs in carton.

Optical System

- State-of-the-Art one piece silicone optic sheet delivers industry leading optical control with an integrated gasket to provide IP66 rated seal.
- Proprietary silicone refractor optics provide exceptional coverage and uniformity in distribution types 2, 3, 5W, FT, FTA and AM.
- Silicone optical material does not yellow or crack with age and provides a typical light transmittance of 93%.
- Zero uplight.
- Available in 5000K, 4000K, and 3000K color temperatures per ANSI C78.377. Also available in phosphor converted amber with peak intensity at 610nm.
- Minimum CRI of 70
- Integral louver (IL) and house-side shield (IH) options available for improved backlight control without sacrificing street side performance. See page 3 for more details.

Electrical

- High-performance driver features overvoltage, under-voltage, short-circuit and over temperature protection.
- 0-10V dimming (10% - 100%) standard.
- Standard Universal Voltage (120-277 VAC) Input 50/60 Hz or optional High Voltage (347-480 VAC).
- L80 Calculated Life: >100k Hours (See Lumen Maintenance on Page 5)
- Total harmonic distortion: <20%
- Operating temperature: -40°C to +50°C (-40°F to +122°F). 42L and 48L lumen packages rated to +40°C.
- Power factor: >.90
- Input power stays constant over life.
- Field replaceable 10kV surge protection device meets a minimum Category C Low operation (per ANSI/IEEE C62.41.2).
- High-efficacy LEDs mounted to metal-core circuit board to maximize heat dissipation
- Driver is fully encased in potting material for moisture resistance and complies with FCC standards. Driver and key electronic components can easily be accessed.

Controls

- Optional integral passive infrared Bluetooth™ motion and photocell sensor. Fixtures operate independently and can be commissioned via iOS or Android configuration app.
- LSI's AirLink™ wireless control system options reduce energy and maintenance costs while optimizing light quality 24/7.

Installation

- A single fastener secures the hinged door, underneath the housing and provides quick & easy access to the electrical compartment.
- Included terminal block accepts up to 12 ga. wire.
- Utilizes LSI's traditional B3 drill pattern. (See drawing on page 9)

Warranty

- LSI luminaires carry a 5-year limited warranty. Refer to <https://www.lsiindustries.com/resources/terms-and-warranty.aspx> for more information.

Listings

- Listed to UL 1598 and UL 8750.
- Meets Buy American Act requirements.
- IDA compliant; with 3000K color temperature selection.
- Title 24 Compliant; see local ordinance for qualification information.
- Suitable for wet locations.
- IP66 rated Luminaire per IEC 60598-1.
- 3G rated for ANSI C136.31 high vibration applications applications are qualified.
- IK08 rated luminaire per IEC 66262 mechanical impact code.
- DesignLights Consortium® (DLC) qualified product. Not all versions of this product may be DLC qualified. Please check the DLC Qualified Products List at www.designlights.org/QPL to confirm which versions are qualified.
- Patented Silicone Optics (US Patent NO. 10,816,165 B2)





Slice Medium Outdoor LED Area Light

ORDERING GUIDE

[Back to Quick Links](#)TYPICAL ORDER EXAMPLE: **SLM LED 36L SIL FTA UNV DIM 50 70CRI ALSCS04 BRZ IL**

Luminaire Prefix	Light Source	Lumen Package	Light Output	Distribution	Orientation ²	Voltage	Driver
SLM - Slice Medium	LED	9L - 9,000 lms 12L - 12,000 lms 18L - 18,000 lms 24L - 24,000 lms 30L - 30,000 lms 36L - 36,000 lms 42L - 42,000 lms 48L - 48,000 lms Custom Lumen Packages ¹	SIL - Silicone	2 - Type 2 3 - Type 3 5W - Type 5 Wide FT - Forward Throw FTA - Forward Throw Automotive AM - Automotive Merchandise	(blank) - standard (no rotation) L - Optics rotated left 90° R - Optics rotated right 90°	UNV - Universal Voltage (120-277V) HV - High Voltage (347-480V)	DIM - 0-10V Dimming (0-10%)

Color Temp	Color Rendering	Controls (Choose One)	Finish	Options
50 - 5,000 CCT 40 - 4,000 CCT 30 - 3,000 CCT AMB - Phosphor Converted Amber ¹¹	70CRI - 70 CRI	(Blank) - None Wireless Controls System ALSC - AirLink Synapse Control System ALSCS02 - AirLink Synapse Control System with 12-20' Motion Sensor ALSCS04 - AirLink Synapse Control System with 20-40' Motion Sensor ALBCS1 - AirLink Blue Wireless Motion & Photo Sensor Controller (8-24' mounting height) ALBCS2 - AirLink Blue Wireless Motion & Photo Sensor Controller (25-40' mounting height) Stand-Alone Controls EXT - 0-10V Dimming leads extended to housing exterior CR7P - 7 Pin Control Receptacle ANSI C136.41 ⁵ IMSBT1 - Integral Bluetooth™ Motion and Photocell Sensor (8-24' MH) ⁴ IMSBT2 - Integral Bluetooth™ Motion and Photocell Sensor (25-40' MH) ⁴ Button Type Photocells PCI120 - 120V PCI208-277 - 208 -277V PCI347 - 347V	BLK - Black BRZ - Dark Bronze GMG - Gun Metal Gray GPT - Graphite MSV - Metallic Silver PLP - Platinum Plus SVG - Satin Verde Green WHT - White	(Blank) - None IH - Integral Houseside Shield ² IL - Integral Louver (Sharp Spill Light Cutoff) ²

Accessories Ordering Information⁶

Controls Accessories	
Description	Order Number
Twist Lock Photocell (120V) for use with CR7P ⁷	122514
Twist Lock Photocell (208-277) for use with CR7P ⁷	122515
Twist Lock Photocell (347V) for use with CR7P ⁷	122516
Twist Lock Photocell (480V) for use with CR7P ⁷	1225180
AirLink 5 Pin Twist Lock Controller ⁷	61409
AirLink 7 Pin Twist Lock Controller ⁷	661410
Pole-Mounted Occupancy Sensor (24V)	663284CLR ⁸
Shorting Cap for use with CR7P ⁷	14932

Fusing Options ¹⁰	
Description	Order Number
Single Fusing (120V)	See Fusing Accessory Guide
Single Fusing (277V)	
Double Fusing (208V, 240V)	
Double Fusing (480V)	
Double Fusing (347V)	

Shielding Options	
Description	Order Number
Mirada Small	See Shielding Guide
Mirada Medium	
Mirada Large	
Zone Medium	
Zone Large	
Slice Medium	

Mounting Accessories ⁸	
Description	Order Number
Round Pole Adapter (3" Round/Tapered Poles)	408273CLR
Round Pole Adapter (4" Round Poles)	379967CLR
Round Pole Adapter (5" Round Poles)	379968CLR
Universal Mounting Bracket	684616CLR
Adjustable Slip Fitter (2" - 2 3/8" Tenon)	688138CLR
Quick Mount Pole Bracket (Square Pole)	687073CLR
Quick Mount Pole Bracket (4-5" Round Pole)	689903CLR
15 Tilt Quick Mount Pole Bracket (Square Pole)	688003CLR
15 Tilt Quick Mount Pole Bracket (4-5" Round Pole)	689905CLR
Wall Mount Bracket	382132CLR
Wood Pole Bracket (6" Minimum Pole Diameter)	751219CLR

Shielding & Miscellaneous Accessories	
Description	Order Number
Integral Louver/Shield	684812
Internal Houseside Shield	743414
10' Linear Bird Spike Kit (6' Recommended per Luminaire)	751632

FOOTNOTES:

- Custom lumen and wattage packages available, consult factory. Values are within industry standard tolerances but not DLC listed.
- Not available on "Type 5W" distribution.
- Consult factory for availability.
- IMSBT is field configurable via the LSI app that can be downloaded from your smartphone's native app store.
- Control device or shorting cap must be ordered separately. See Accessory Ordering Information.

- Accessories are shipped separately and field installed.
- Fusing must be located in hand hole of pole.
- "CLR" denotes finish. See Finish options.
- Only available with ALSC/ALSCH control options.
- Fusing must be located in hand hole of pole. See [Fusing Accessory Guide](#) for compatibility.
- Only available in 9L and 12L Lumen Packages. Consult factory for lead time and availability.

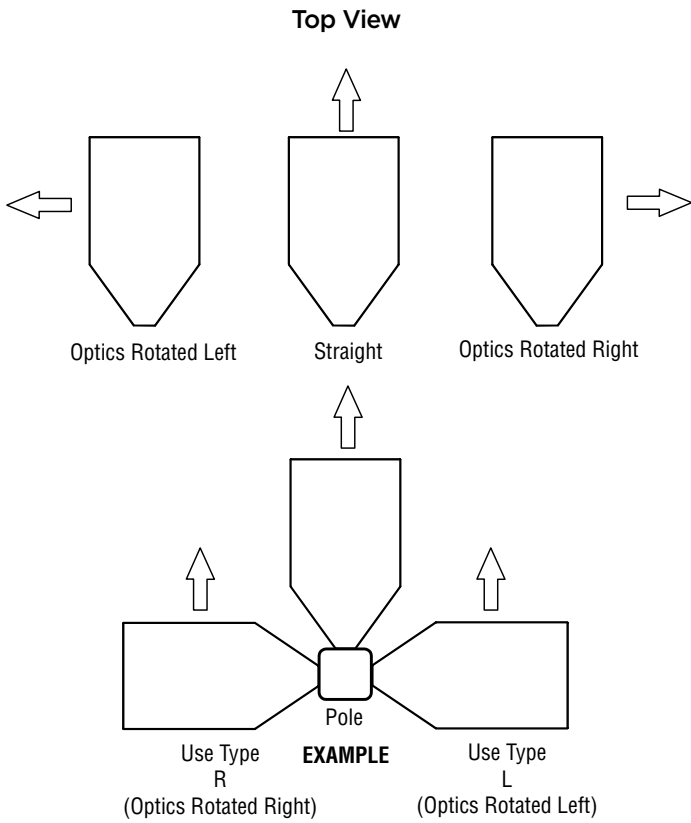




Slice Medium Outdoor LED Area Light

OPTICS ROTATION

ACCESSORIES/OPTIONS



Integral Louver (IL) and House-Side Shield (IH)

Accessory louver and shield available for improved backlight control without sacrificing street side performance. LSI's Integral Louver (L) and Integral House-Side Shield (IH) options deliver backlight control that significantly reduces spill light behind the poles for applications with pole locations close to adjacent properties. The design maximizes forward reflected light while reducing glare, maintaining the optical distribution selected, and most importantly eliminating light trespass. Both options rotate with the optical distribution.

Luminaire Shown with Integral Louver (IL)



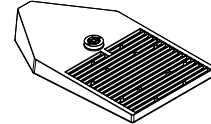
Luminaire Shown with IMSBT Option



7 Pin Photoelectric Control

7-pin ANSI C136.41-2013 control receptacle option available for twist lock photocontrols or wireless control modules. Control accessories sold separately. Dimming leads from the receptacle will be connected to the driver dimming leads (Consult factory for alternate wiring).

Fixture Shown with CR7P





Slice Medium Outdoor LED Area Light

PERFORMANCE

[Back to Quick Links](#)

Delivered Lumens*												
Lumen Package	Distribution	CRI	3000K CCT			4000K CCT			5000K CCT			Wattage
			Delivered Lumens	Efficacy	BUG Rating	Delivered Lumens	Efficacy	BUG Rating	Delivered Lumens	Efficacy	BUG Rating	
9L	2	70	9411	149	B2-U0-G2	9603	152	B2-U0-G2	9603	152	B2-U0-G2	63
	3		9548	152	B2-U0-G2	9743	155	B2-U0-G2	9743	155	B2-U0-G2	
	5W		9261	147	B3-U0-G2	9450	150	B3-U0-G2	9450	150	B3-U0-G2	
	FT		9464	150	B2-U0-G2	9657	153	B2-U0-G2	9657	153	B2-U0-G2	
	FTA		9531	151	B2-U0-G2	9725	154	B2-U0-G2	9725	154	B2-U0-G2	
	AM		9649	153	B2-U0-G1	9845	156	B2-U0-G1	9845	156	B2-U0-G1	
12L	2	70	12533	147	B3-U0-G2	12788	150	B3-U0-G2	12788	150	B3-U0-G2	85
	3		12714	150	B2-U0-G2	12974	153	B2-U0-G2	12974	153	B2-U0-G2	
	5W		12333	145	B4-U0-G2	12584	148	B4-U0-G2	12584	148	B4-U0-G2	
	FT		12603	148	B2-U0-G2	12861	151	B2-U0-G2	12861	151	B2-U0-G2	
	FTA		12692	149	B3-U0-G2	12950	152	B3-U0-G2	12950	152	B3-U0-G2	
	AM		12848	151	B3-U0-G1	13111	154	B3-U0-G2	13111	154	B3-U0-G2	
18L	2	70	18421	136	B3-U0-G3	18797	139	B3-U0-G3	18797	139	B3-U0-G3	135
	3		18691	138	B3-U0-G3	19072	141	B3-U0-G3	19072	141	B3-U0-G3	
	5W		18128	134	B4-U0-G2	18498	137	B4-U0-G2	18498	137	B4-U0-G2	
	FT		18526	137	B3-U0-G3	18904	140	B3-U0-G3	18904	140	B3-U0-G3	
	FTA		18656	138	B3-U0-G3	19037	141	B3-U0-G3	19037	141	B3-U0-G3	
	AM		18886	140	B3-U0-G2	19271	143	B3-U0-G2	19271	143	B3-U0-G2	
24L	2	70	24847	141	B4-U0-G3	25354	144	B4-U0-G3	25354	144	B4-U0-G3	176
	3		25210	143	B3-U0-G4	25724	146	B3-U0-G4	25724	146	B3-U0-G4	
	5W		24451	139	B5-U0-G3	24950	142	B5-U0-G3	24950	142	B5-U0-G3	
	FT		24987	142	B3-U0-G4	25497	145	B3-U0-G4	25497	145	B3-U0-G4	
	FTA		25162	143	B4-U0-G3	25676	146	B4-U0-G3	25676	146	B4-U0-G3	
	AM		25473	145	B3-U0-G2	25993	148	B3-U0-G2	25993	148	B3-U0-G2	
30L	2	70	31109	134	B4-U0-G3	31743	137	B4-U0-G3	31743	137	B4-U0-G3	232
	3		31562	136	B4-U0-G4	32206	139	B4-U0-G4	32206	139	B4-U0-G4	
	5W		30612	132	B5-U0-G3	31237	135	B5-U0-G3	31237	135	B5-U0-G3	
	FT		31283	135	B4-U0-G4	31921	138	B4-U0-G4	31921	138	B4-U0-G4	
	FTA		31503	136	B4-U0-G3	32146	139	B4-U0-G3	32146	139	B4-U0-G3	
	AM		31892	137	B3-U0-G3	32543	140	B4-U0-G3	32543	140	B4-U0-G3	
36L	2	70	36846	129	B4-U0-G3	37597	131	B4-U0-G3	37597	131	B4-U0-G3	286
	3		37383	131	B4-U0-G4	38146	133	B4-U0-G4	38146	133	B4-U0-G4	
	5W		36258	127	B5-U0-G4	36998	129	B5-U0-G4	36998	129	B5-U0-G4	
	FT		37052	130	B4-U0-G4	37808	132	B4-U0-G4	37808	132	B4-U0-G4	
	FTA		37313	130	B4-U0-G4	38075	133	B4-U0-G4	38075	133	B4-U0-G4	
	AM		37774	132	B4-U0-G3	38545	135	B4-U0-G3	38545	135	B4-U0-G3	
42L	2	70	42623	121	B5-U0-G4	43492	124	B5-U0-G4	43492	124	B5-U0-G4	352
	3		43245	123	B4-U0-G5	44127	125	B4-U0-G5	44127	125	B4-U0-G5	
	5W		41943	119	B5-U0-G4	42799	122	B5-U0-G4	42799	122	B5-U0-G4	
	FT		42863	122	B4-U0-G5	43737	124	B4-U0-G5	43737	124	B4-U0-G5	
	FTA		43163	123	B5-U0-G4	44044	125	B5-U0-G4	44044	125	B5-U0-G4	
	AM		43696	124	B4-U0-G3	44588	127	B4-U0-G3	44588	127	B4-U0-G3	
48L	2	70	45975	114	B5-U0-G4	46914	116	B5-U0-G4	46914	116	B5-U0-G4	401
	3		46646	115	B4-U0-G5	47598	118	B4-U0-G5	47598	118	B4-U0-G5	
	5W		45243	112	B5-U0-G4	46166	114	B5-U0-G4	46166	114	B5-U0-G4	
	FT		46235	114	B4-U0-G5	47178	116	B4-U0-G5	47178	116	B4-U0-G5	
	FTA		46559	115	B5-U0-G4	47509	117	B5-U0-G4	47509	117	B5-U0-G4	
	AM		47134	116	B4-U0-G3	48096	119	B4-U0-G3	48096	119	B4-U0-G3	



Slice Medium Outdoor LED Area Light

PERFORMANCE (CONT.)

ELECTRICAL DATA (AMPS)*						
Lumens	120V	208V	240V	277V	347V	480V
9L	0.53	0.30	0.26	0.23	0.18	0.13
12L	0.71	0.41	0.35	0.31	0.24	0.18
18L	1.13	0.65	0.56	0.49	0.39	0.28
24L	1.47	0.85	0.73	0.64	0.51	0.37
30L	1.93	1.12	0.97	0.84	0.67	0.48
36L	2.38	1.38	1.19	1.03	0.82	0.60
42L	2.93	1.69	1.47	1.27	1.01	0.73
48L	3.4	1.9	1.7	1.5	1.2	.8

*Electrical data at 25°C (77°F). Actual wattage may differ by +/-10%

FOOTNOTES:

- Lumen maintenance values at 25C are calculated per TM-21 based on LM-80 data and in-situ testing.
- In accordance with IESNA TM-21-11, Projected Values represent interpolated value based on time durations that are within six times the IESNA LM-80-08 total test duration for the device under testing.
- In accordance with IESNA TM-21-11, Calculated Values represent time durations that exceed six times the IESNA LM-80-08 total test duration for the device under testing.

RECOMMENDED LUMEN MAINTENANCE ¹ (9-18L)					
Ambient	Initial ²	25h ²	50h ²	75h ²	100h ²
0 C	100%	97%	94%	90%	87%
10 C	100%	97%	94%	90%	87%
20 C	100%	97%	94%	90%	87%
25 C	100%	97%	93%	90%	86%
30 C	100%	97%	93%	89%	86%
40 C	100%	97%	92%	88%	84%
50 C	100%	96%	91%	87%	83%

RECOMMENDED LUMEN MAINTENANCE ¹ (24-48L)					
C	0 hrs. ²	25 hrs. ²	50 hrs. ²	75 hrs. ²	100 hrs. ²
0 C - 25 C	100%	95%	89%	84%	79%
40 C	100%	94%	87%	80%	74%

PHOTOMETRICS

[Back to Quick Links](#)

Luminaire photometry has been conducted by a NVLAP accredited testing laboratory in accordance with IESNA LM-79-08. As specified by IESNA LM-79-08 the entire luminaire is tested as the source resulting in a luminaire efficiency of 100%.

See <http://www.lsicorp.com/products/led-lighting-solutions.aspx> for detailed photometric data.

SLM-LED-30L-SIL-2-40-70CRI

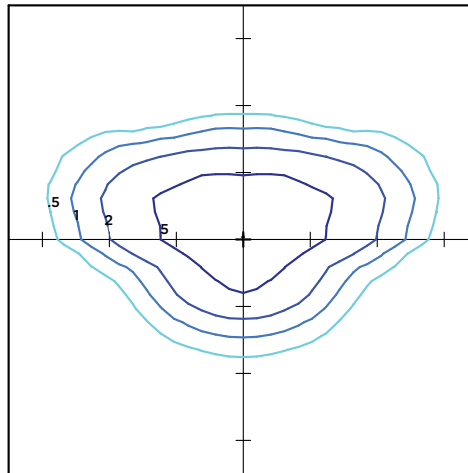
LUMINAIRE DATA

Type 2 Distribution	
Description	4000 Kelvin, 70 CRI
Delivered Lumens	31,743
Watts	232
Efficacy	137
IES Type	Type II - Short
BUG Rating	B4-U0-G3

Zonal Lumen Summary

Zone	Lumens	%Luminaire
Low (0-30)°	4953	16%
Medium (30-60)°	19157	60%
High (60-80)°	7350	23%
Very High (80-90)°	284	1%
Uplight (90-180)°	0	0%
Total Flux	31743	100%

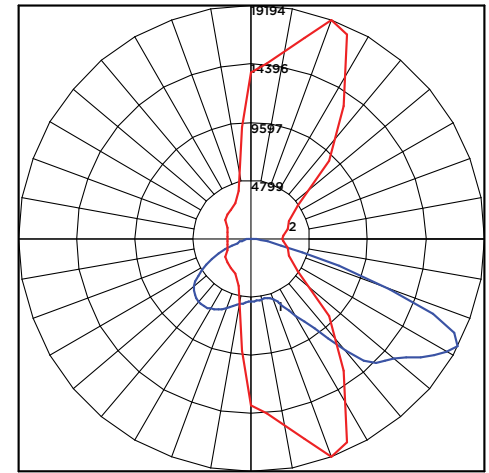
ISO FOOTCANDLE



25' Mounting Height/ 25' Grid Spacing

■ 5 FC ■ 2 FC ■ 1 FC ■ 0.5 FC

POLAR CURVE





Slice Medium Outdoor LED Area Light

PHOTOMETRICS (CONT.)

SLM-LED-30L-SIL-3-40-70CRI

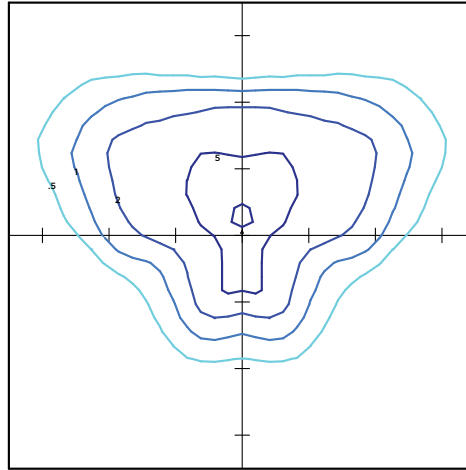
LUMINAIRE DATA

Type 3 Distribution	
Description	4000 Kelvin, 70 CRI
Delivered Lumens	32,206
Watts	232
Efficacy	139
IES Type	Type III - Short
BUG Rating	B4-U0-G4

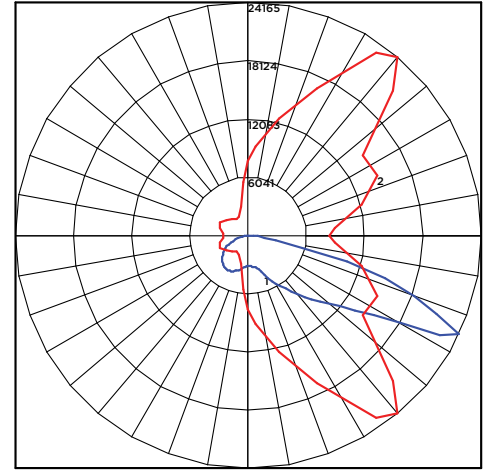
Zonal Lumen Summary

Zone	Lumens	%Luminaire
Low (0-30)°	3408	11%
Medium (30-60)°	16397	51%
High (60-80)°	11868	37%
Very High (80-90)°	533	2%
Uplight (90-180)°	0	0%
Total Flux	32206	100%

ISO FOOTCANDLE



POLAR CURVE



25' Mounting Height/ 25' Grid Spacing

■ 5 FC ■ 2 FC ■ 1 FC ■ 0.5 FC

SLM-LED-30L-SIL-FT-40-70CRI

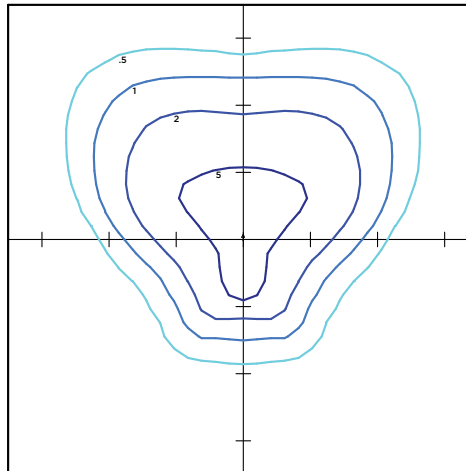
LUMINAIRE DATA

Type FT Distribution	
Description	4000 Kelvin, 70 CRI
Delivered Lumens	31,921
Watts	232
Efficacy	138
IES Type	Type IV - Short
BUG Rating	B4-U0-G4

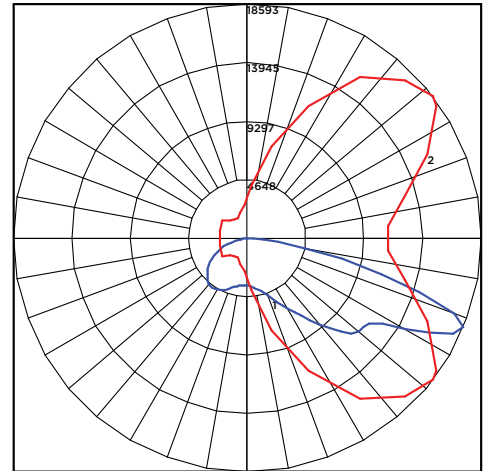
Zonal Lumen Summary

Zone	Lumens	%Luminaire
Low (0-30)°	3874	12%
Medium (30-60)°	15694	49%
High (60-80)°	11696	37%
Very High (80-90)°	657	2%
Uplight (90-180)°	0	0%
Total Flux	31921	100%

ISO FOOTCANDLE



POLAR CURVE



25' Mounting Height/ 25' Grid Spacing

■ 5 FC ■ 2 FC ■ 1 FC ■ 0.5 FC





Slice Medium Outdoor LED Area Light

PHOTOMETRICS (CONT.)

SLM-LED-30L-SIL-5W-40-70CRI

LUMINAIRE DATA

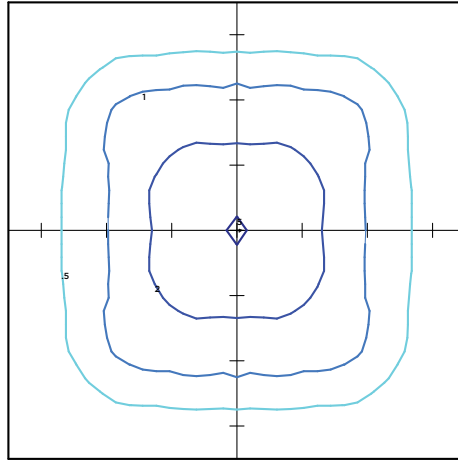
Type 5W Distribution

Description	4000 Kelvin, 70 CRI
Delivered Lumens	31,237
Watts	232
Efficacy	135
IES Type	Type IV - Short
BUG Rating	B5-U0-G3

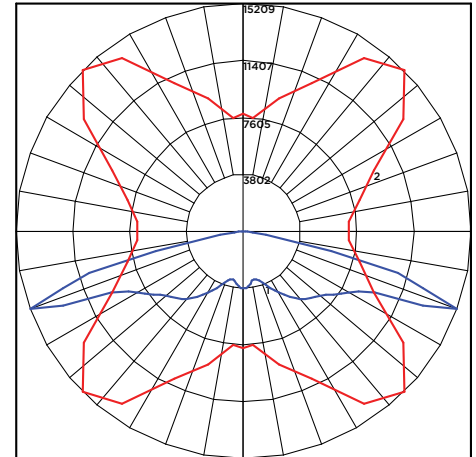
Zonal Lumen Summary

Zone	Lumens	%Luminaire
Low (0-30)°	3186	10%
Medium (30-60)°	13594	44%
High (60-80)°	14195	45%
Very High (80-90)°	261	1%
Uplight (90-180)°	0	0%
Total Flux	31237	100%

ISO FOOTCANDLE



POLAR CURVE



25' Mounting Height/ 25' Grid Spacing

■ 5 FC ■ 2 FC ■ 1 FC ■ 0.5 FC

SLM-LED-30L-SIL-FTA-40-70CRI

LUMINAIRE DATA

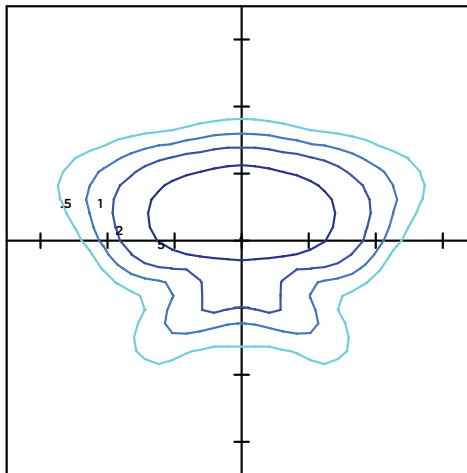
Type FTA Distribution

Description	4000 Kelvin, 70 CRI
Delivered Lumens	32,146
Watts	232
Efficacy	139
IES Type	Type I - Very Short
BUG Rating	B4-U0-G3

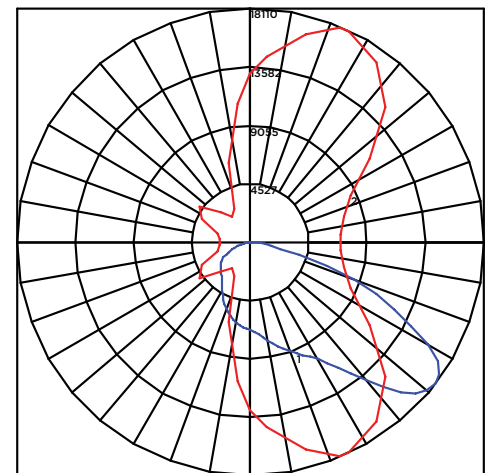
Zonal Lumen Summary

Zone	Lumens	%Luminaire
Low (0-30)°	7371	23%
Medium (30-60)°	18710	58%
High (60-80)°	5624	17%
Very High (80-90)°	441	1%
Uplight (90-180)°	0	0%
Total Flux	32146	100%

ISO FOOTCANDLE



POLAR CURVE



25' Mounting Height/ 25' Grid Spacing

■ 5 FC ■ 2 FC ■ 1 FC ■ 0.5 FC





Slice Medium Outdoor LED Area Light

PHOTOMETRICS (CONT.)

SLM-LED-30L-SIL-AM-40-70CRI

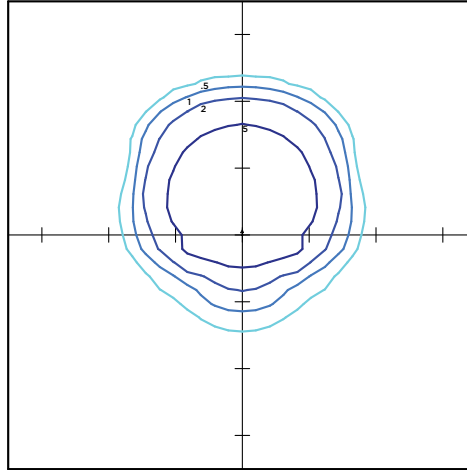
LUMINAIRE DATA

Type AM Distribution	
Description	4000 Kelvin, 70 CRI
Delivered Lumens	32,543
Watts	232
Efficacy	140
IES Type	Type III - Very Short
BUG Rating	B4-U0-G3

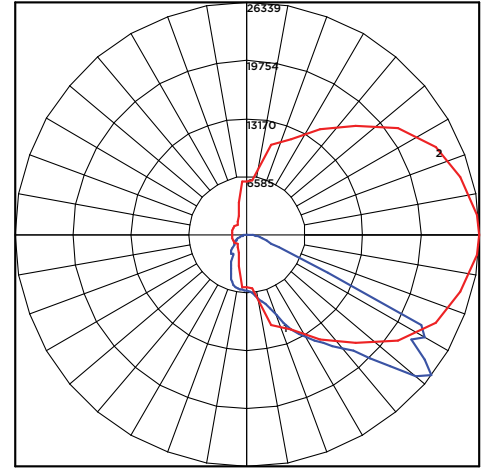
Zonal Lumen Summary

Zone	Lumens	%Luminaire
Low (0-30)°	6390	9%
Medium (30-60)°	20951	43%
High (60-80)°	4838	48%
Very High (80-90)°	365	1%
Uplight (90-180)°	0	0%
Total Flux	32543	100%

ISO FOOTCANDLE



POLAR CURVE

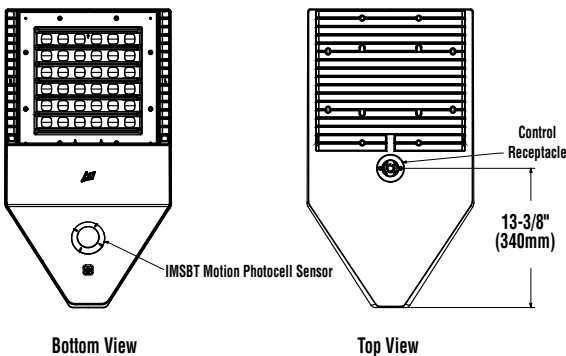
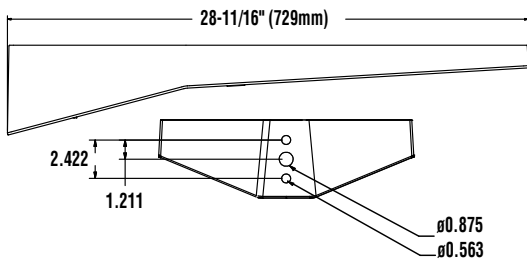
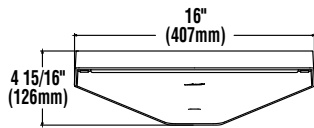


25' Mounting Height/ 25' Grid Spacing

5 FC
 2 FC
 1 FC
 0.5 FC

PRODUCT DIMENSIONS

[Back to Quick Links](#)



LUMINAIRE EPA CHART - SLM									
Tilt Degree		0°	30°	45°	Tilt Degree	0°	30°	45°	
■	Single	0.5	2.1	2.6	⊠	T90°	1.2	2.9	3.6
■	D180°	1.1	2.1	2.6	⊠	TN120°	1.3	4.4	5.4
■	D90°	0.9	2.5	3.1	⊠	Q90°	1.2	2.9	3.6





Slice Medium Outdoor LED Area Light

CONTROLS

AirLink Wireless Lighting Controller

The AirLink integrated controller is a California Title 24 compliant lighting controller that provides real-time light monitoring and control with utility-grade power monitoring. It includes a 24V sensor input and power supply to connect a sensor into the outdoor AirLink wireless lighting system.

The wireless integrated controller is compatible with this fixture.

Click the link below to learn more details about AirLink.

<https://www.lsicorp.com/documents/datasheets/airlink-outdoor-specsheet.pdf>

Integral Bluetooth™ Motion and Photocell Sensor (IMSBT)

Slim low profile sensor provides multi-level control based on motion and/or daylight. Sensor controls 0-10 VDC LED drivers and is rated for cold and wet locations (-30° C to 70° C). Two unique PIR lenses are available and used based on fixture mounting height. All control parameters are adjustable via an iOS or Android App capable of storing and transmitting sensor profiles.

Click the link below to learn more details about IMSBT.

<https://www.lsicorp.com/documents/datasheets/imsbt-specsheet.pdf>

AirLink Blue

Wireless Bluetooth Mesh Outdoor Lighting Control System that provides energy savings, code compliance and enhanced safety/security for parking lots and parking garages. Three key components; Bluetooth wireless radio/sensor controller, Time Keeper and an iOS App. Capable of grouping multiple fixtures and sensors as well as scheduling time-based events by zone. Radio/Sensor Controller is factory integrated into Area/Site, Wall Mounted, Parking Garage and Canopy luminaires.

Click the link below to learn more details about AirLink Blue.

<https://www.lsi-airlink.com/airlink-blue/>

POLES & BRACKETS

LSI offers a full line of poles and mounting accessories to complete your lighting assembly. Aluminum and steel in both square and round shafts. In addition, LSI offers round tapered, fluted and hinge based poles. Designed and engineered for durability and protected with our oven baked DuraGrip Protection System. Also available with our DuraGrip+ Protection system for unmatched corrosion resistance and an extended warranty. American made in our Ohio facility with industry leading lead times.

Click the link below to learn more details about poles & brackets.

<https://www.lsicorp.com/products/poles-and-brackets-area-street.aspx>



BKA UMB CLR

The 3G rated UMB allows for seamless integration of LSI luminaires onto existing/ retrofit or new construction poles. The UMB was designed for square or round (tapered or straight) poles with two mounting hole spacings between 3.5" - 5".



BKA ASF CLR

The adjustable Slip Fitter is a 3G rated rugged die cast aluminum adapter to mount LSI luminaires onto a 2" iron pipe, 2 3/8 OD tenon. The Adjustable Slip Fitter can be rotated 180° allowing for tilting LSI luminaires up to 45° and 90° when using a vertical tenon.



BKS PQM15 CLR

The Pole Quick Mount Bracket allows for preset 15° uptilt of LSI luminaires for greater throw of light and increased vertical illumination as well as fast installation onto poles with LSI's 3" or 5" bolt pattern.



BKS PQMH CLR

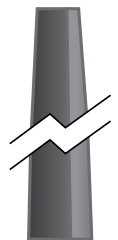
The Pole Quick Mount Bracket allows for lightning fast installation of LSI luminaires onto existing and new construction poles with LSI's B3 or B5 standard pole bolt patterns.



Square Pole
14'-39'



Round Pole
10'-30'



Tapered Pole
20'-39'

