

**CORE ENGINEERING GROUP**  
15004 151<sup>ST</sup> AVENUE, SUITE 301  
FONTAINE, CO 80903  
PH: 719.570.1100  
CONTACT: RICHARD L. SCHINDLER, P.E.  
EMAIL: Rich@cog1.com

DATE: \_\_\_\_\_

DESCRIPTION: \_\_\_\_\_

NO: \_\_\_\_\_

PREPARED FOR: **LORSON, LLC**  
212 N. WAHSATCH AVE, SUITE 301  
COLORADO SPRINGS, COLORADO 80903  
(719) 635-3200  
CONTACT: JEFF MARK

PROJECT: **THE RIDGE AT LORSON RANCH**  
FONTAINE BLVD.-MERIDIAN RD  
COLORADO SPRINGS, COLORADO

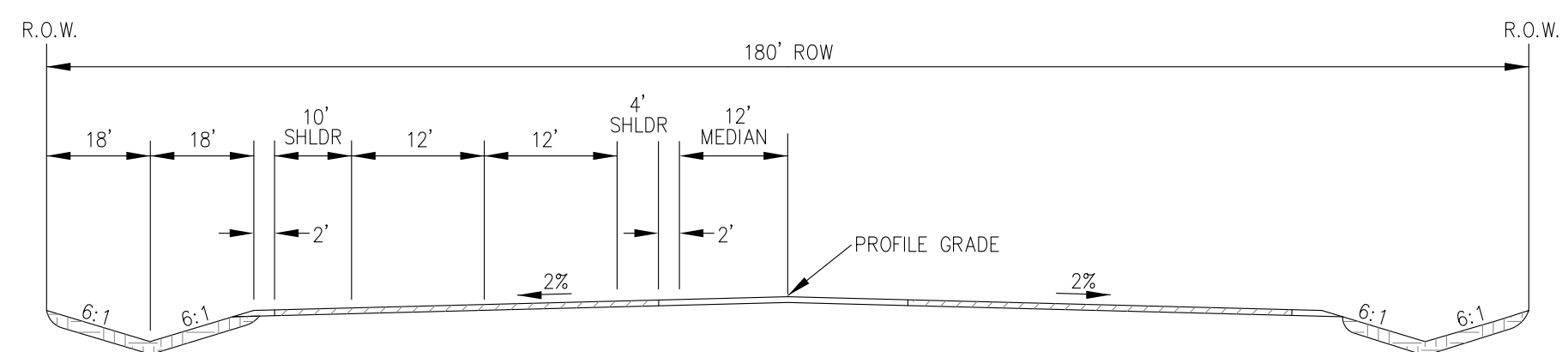
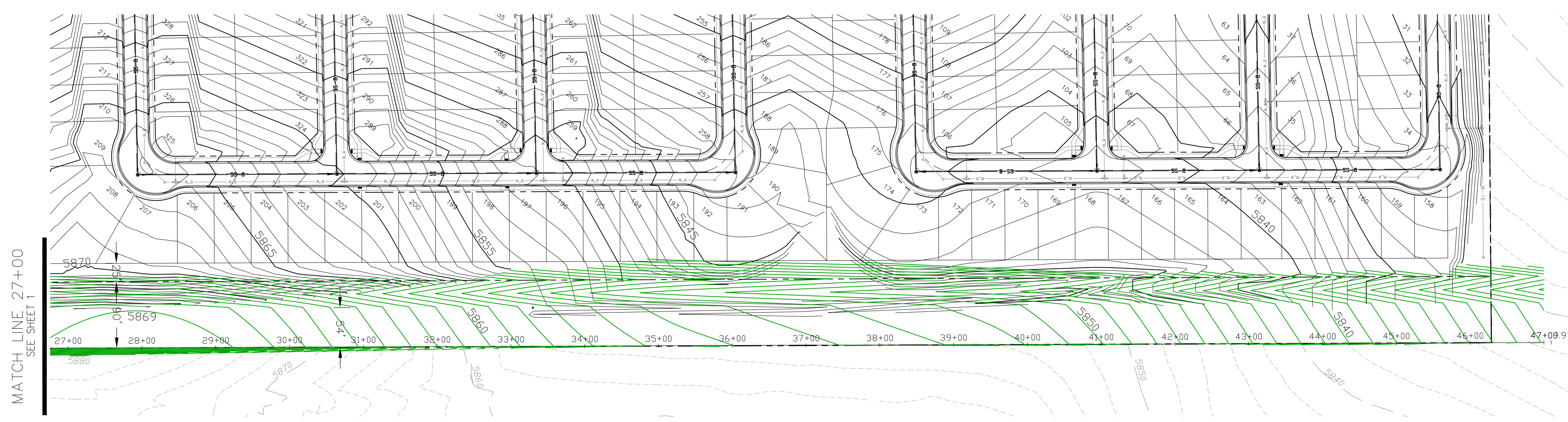
DRAWN: RLS  
DESIGNED: RLS  
CHECKED: RLS

DATE: JULY 19, 2021

PROJECT NO. 100.064

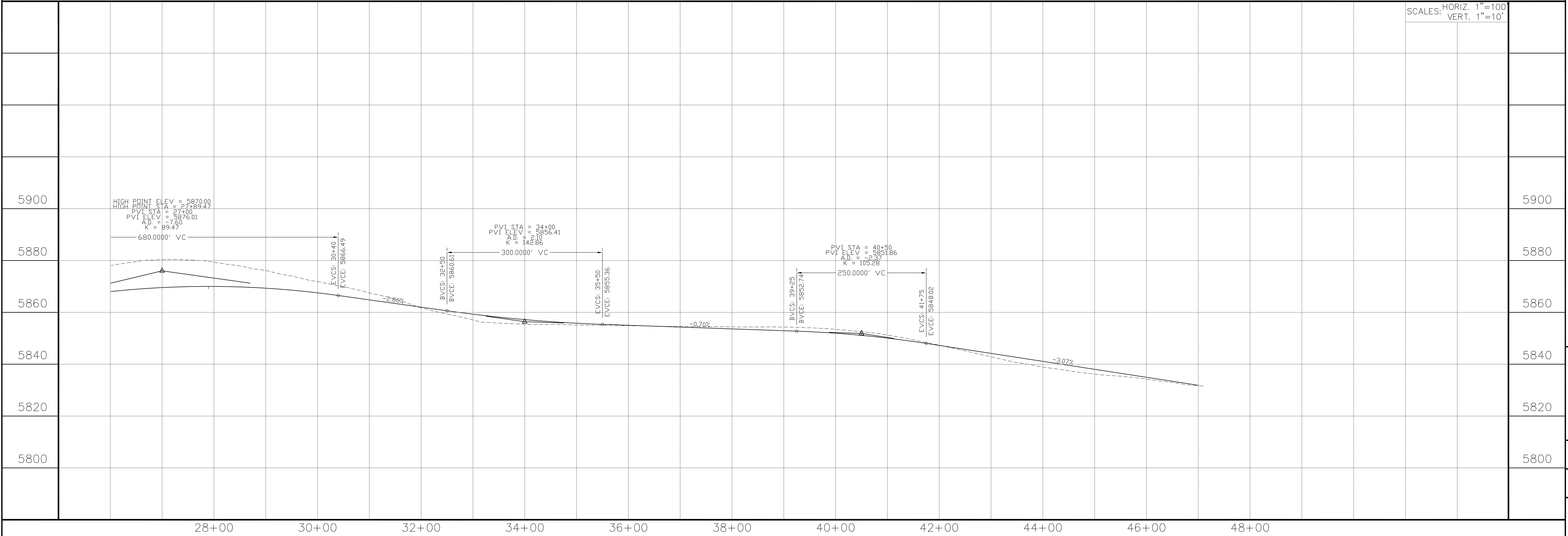
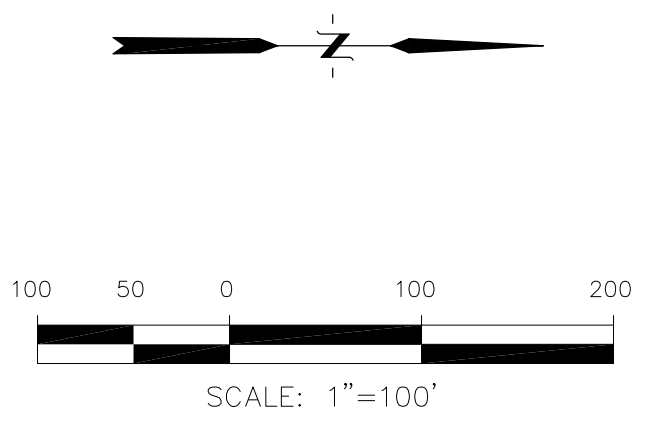
SHEET NUMBER 1

TOTAL SHEETS: 2



RURAL PRINCIPAL ARTERIAL-4 LANE  
NOT TO SCALE

FUTURE MERIDIAN ROAD



**CORE**  
ENGINEERING GROUP  
15004 151<sup>ST</sup> AVENUE S.  
DENVER, CO 80232  
PH: 719.570.1100  
CONTACT: RICHARD L. SCHINDLER, P.E.  
EMAIL: Rich@ceg1.com

DATE: \_\_\_\_\_  
DESCRIPTION: \_\_\_\_\_  
NO: \_\_\_\_\_

PREPARED FOR:  
**LORSON, LLC**  
212 N. WAHSATCH AVE, SUITE 301  
COLORADO SPRINGS, COLORADO 80903  
CONTACT: JEFF MARK

DRAWN: RLS  
DESIGNED: RLS  
CHECKED: RLS

CONCEPT PROFILE  
MERIDIAN ROAD  
STA 27+00 TO 48+00

DATE:  
JULY 19, 2021

PROJECT NO.  
100.064

SHEET NUMBER  
2

TOTAL SHEETS: 2