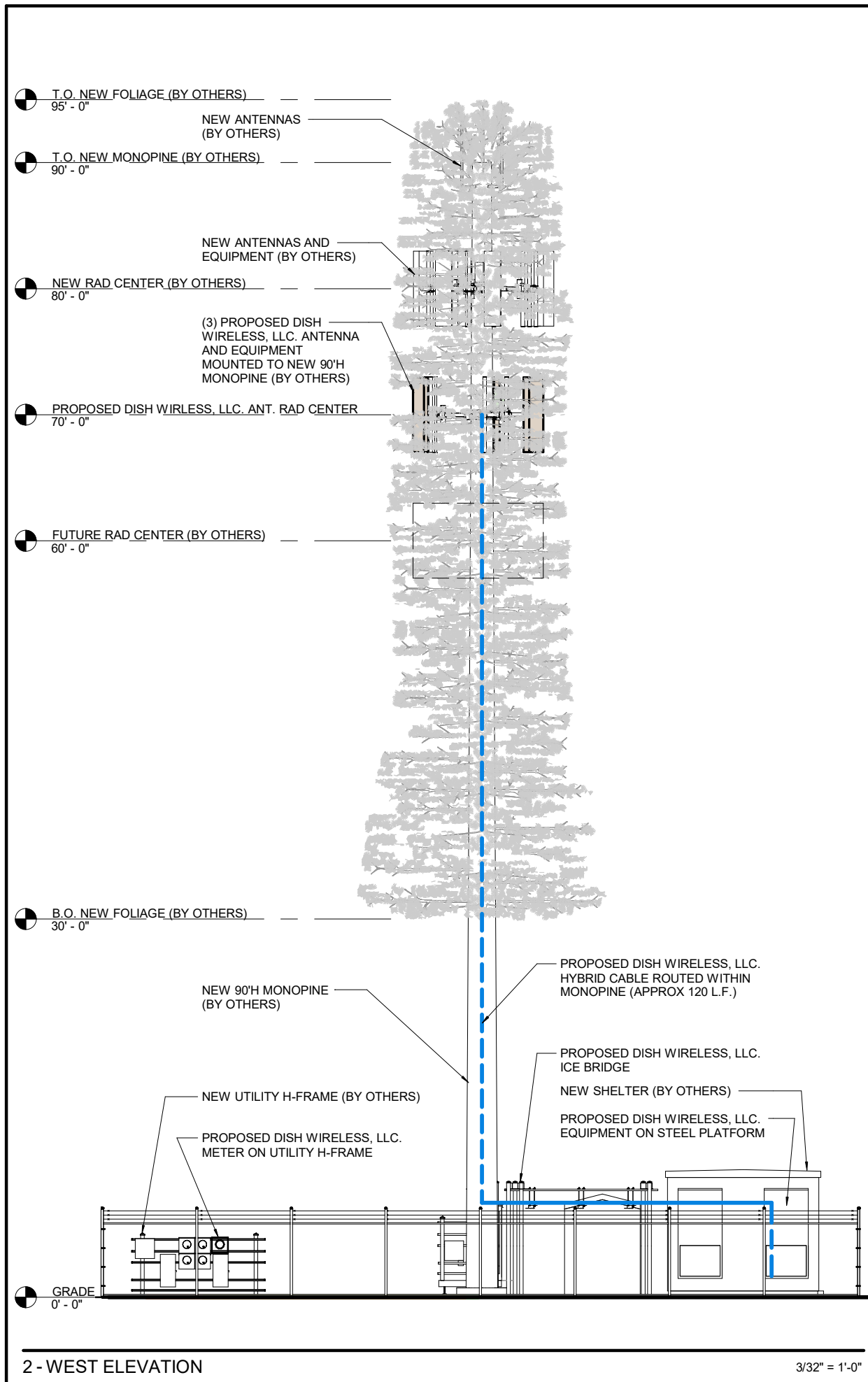


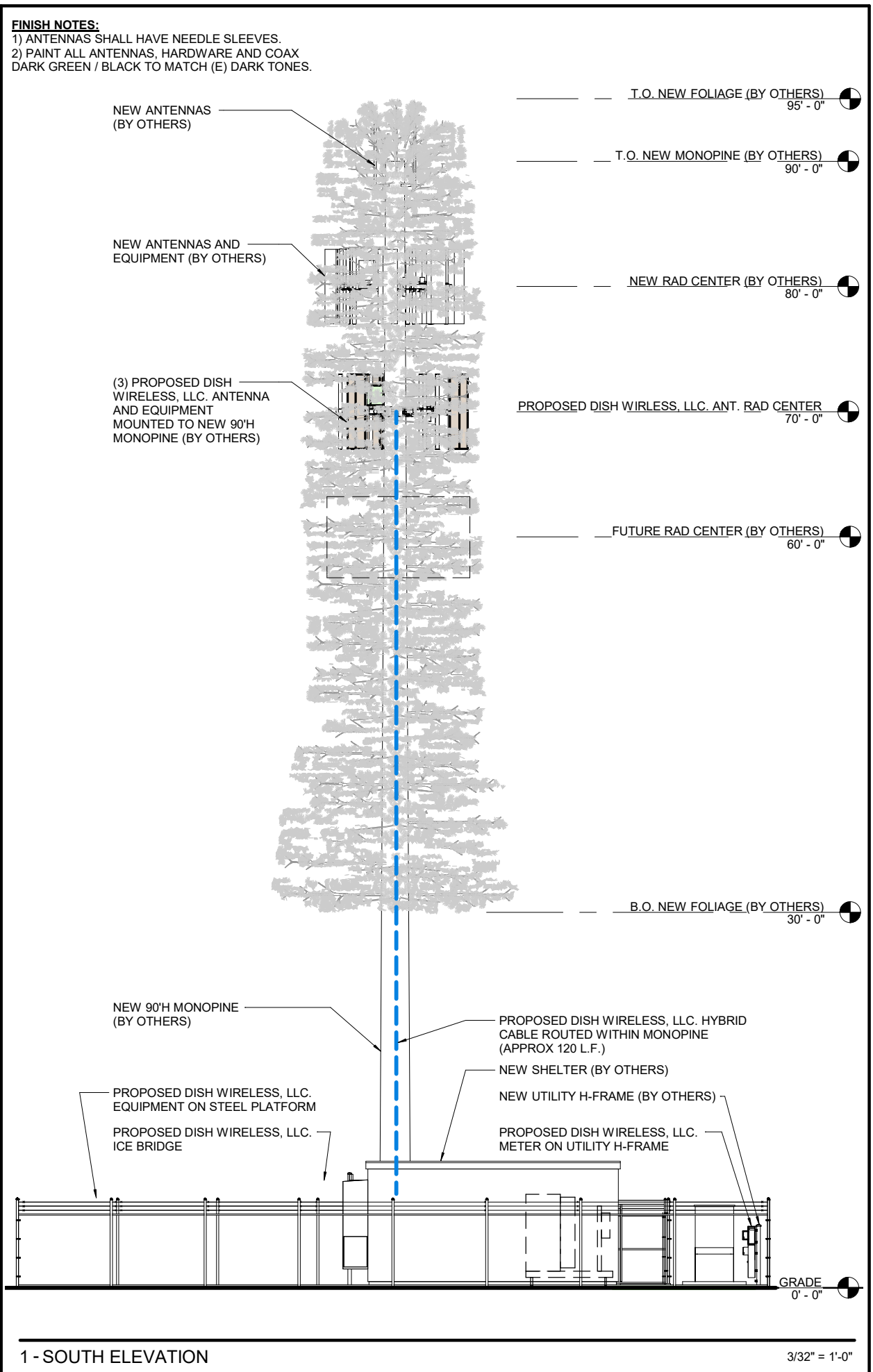
PENETRATIONS
 ANTENNAS
 LEASE AREA
 EXISTING EASEMENT
 ACCESS/UTILITY EASEMENT
 GEN. CONST./UTILITY EASEMENT
 OVP/ELEC. EQ.
 POWER/GROUNDING
 MW/FIBER EQ.
 FIBER
 BB/URRH
 HYBRID & COAX CABLES



2 - WEST ELEVATION

3/32" = 1'-0"

FINISH NOTES:
 1) ANTENNAS SHALL HAVE NEEDLE SLEEVES.
 2) PAINT ALL ANTENNAS, HARDWARE AND COAX DARK GREEN / BLACK TO MATCH (E) DARK TONES.



1 - SOUTH ELEVATION

3/32" = 1'-0"



CONSULTANT

NOT FOR CONSTRUCTION

IT IS A VIOLATION OF LAW FOR ANY PERSON, UNLESS THEY ARE ACTING UNDER THE DIRECTION OF A LICENSED PROFESSIONAL ENGINEER, TO ALTER THIS DOCUMENT.

DRAWN BY:	CHECKED BY:	APPROVED BY:
QTR	NAC	SGP

RFDS REV #: XXX

ZONING DOCUMENT

SUBMITTALS

A	11/10/21 ZD REVIEW
B	02/07/22 JX COMMENTS

(VENDOR) PROJECT NUMBER
DNDEN00337B

DISH WIRELESS PROJECT NUMBER
DNDEN00337B
14540 N MERIDIAN RD
ELBERT, CO 14450

SHEET TITLE
ELEVATIONS

SHEET NUMBER
A2.00