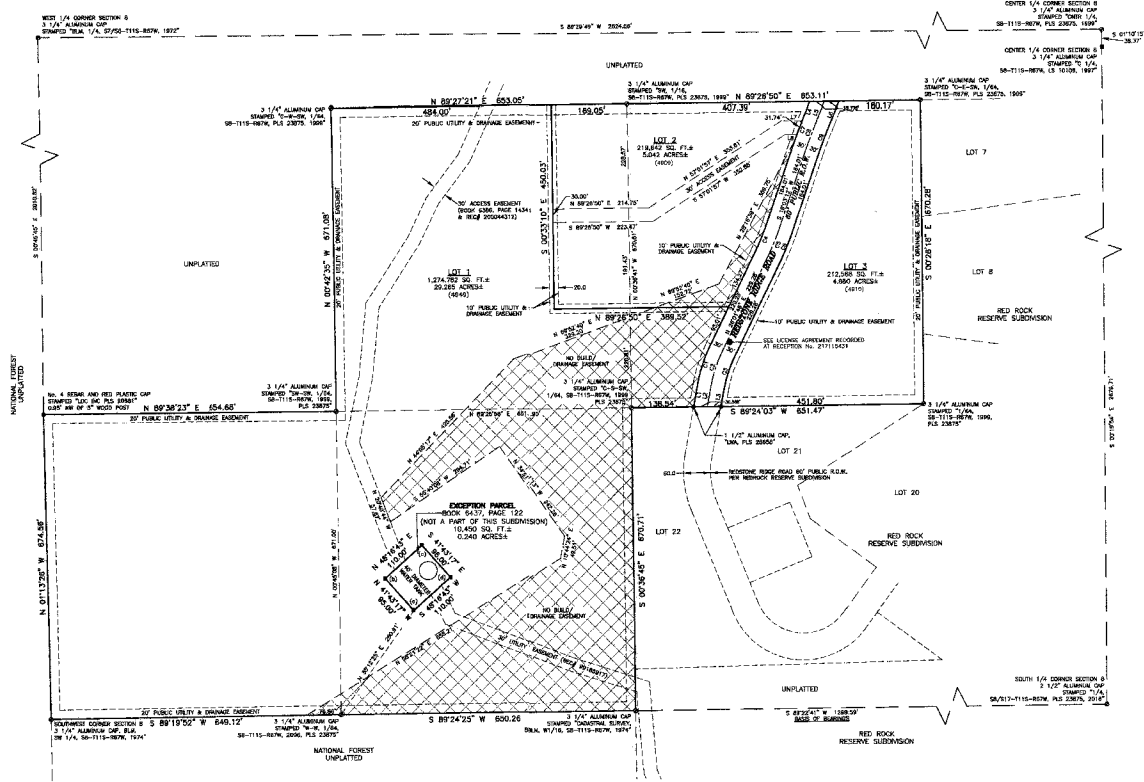


ROCKWOOD MINOR SUBDIVISION FILING No. 2

A REPLAT OF LOTS 1 AND 2, ROCKWOOD MINOR SUBDIVISION
A PORTION OF THE SOUTHWEST QUARTER OF
SECTION 8, TOWNSHIP 11 SOUTH, RANGE 67 WEST OF THE 6TH P.M.
COUNTY OF EL PASO, STATE OF COLORADO

14063

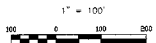
AS PLATTED:



NO.	DATE	DESCRIPTION	BY
1	10/20/2011	FILED	...
2	11/02/2011
3	11/02/2011
4	11/02/2011
5	11/02/2011
6	11/02/2011
7	11/02/2011
8	11/02/2011
9	11/02/2011
10	11/02/2011
11	11/02/2011
12	11/02/2011
13	11/02/2011
14	11/02/2011
15	11/02/2011
16	11/02/2011
17	11/02/2011
18	11/02/2011
19	11/02/2011
20	11/02/2011
21	11/02/2011
22	11/02/2011
23	11/02/2011
24	11/02/2011
25	11/02/2011
26	11/02/2011
27	11/02/2011
28	11/02/2011
29	11/02/2011
30	11/02/2011

NO.	DATE	DESCRIPTION	BY
1	10/20/2011	FILED	...
2	11/02/2011
3	11/02/2011
4	11/02/2011
5	11/02/2011
6	11/02/2011
7	11/02/2011
8	11/02/2011
9	11/02/2011
10	11/02/2011
11	11/02/2011
12	11/02/2011
13	11/02/2011
14	11/02/2011
15	11/02/2011
16	11/02/2011
17	11/02/2011
18	11/02/2011
19	11/02/2011
20	11/02/2011
21	11/02/2011
22	11/02/2011
23	11/02/2011
24	11/02/2011
25	11/02/2011
26	11/02/2011
27	11/02/2011
28	11/02/2011
29	11/02/2011
30	11/02/2011

- LEGEND**
- FOUND SECTION MONUMENT AS NOTED
 - FOUND MONUMENT AS NOTED
 - (A) FOUND #5 WEATHER-ALUMINUM CAP STAMPED "2.00 FT WC - PLS 23875"
 - (B) FOUND #4 WEATHER-PLASTIC CAP, STAMPING ILLIGIBLE
 - (C) FOUND #4 WEATHER-PLASTIC CAP STAMPED "78910"
 - (D) FOUND #4 WEATHER-PLASTIC CAP STAMPED "78910"
 - (E) FOUND #4 WEATHER-PLASTIC CAP STAMPED "78910"
 - (F) FOUND #4 WEATHER-PLASTIC CAP STAMPED "78910"
 - (G) FOUND #4 WEATHER-PLASTIC CAP STAMPED "78910"
 - (H) FOUND #4 WEATHER-PLASTIC CAP STAMPED "78910"
 - (I) FOUND #4 WEATHER-PLASTIC CAP STAMPED "78910"
 - (J) FOUND #4 WEATHER-PLASTIC CAP STAMPED "78910"
 - (K) FOUND #4 WEATHER-PLASTIC CAP STAMPED "78910"
 - (L) FOUND #4 WEATHER-PLASTIC CAP STAMPED "78910"
 - (M) FOUND #4 WEATHER-PLASTIC CAP STAMPED "78910"
 - (N) FOUND #4 WEATHER-PLASTIC CAP STAMPED "78910"
 - (O) FOUND #4 WEATHER-PLASTIC CAP STAMPED "78910"
 - (P) FOUND #4 WEATHER-PLASTIC CAP STAMPED "78910"
 - (Q) FOUND #4 WEATHER-PLASTIC CAP STAMPED "78910"
 - (R) FOUND #4 WEATHER-PLASTIC CAP STAMPED "78910"
 - (S) FOUND #4 WEATHER-PLASTIC CAP STAMPED "78910"
 - (T) FOUND #4 WEATHER-PLASTIC CAP STAMPED "78910"
 - (U) FOUND #4 WEATHER-PLASTIC CAP STAMPED "78910"
 - (V) FOUND #4 WEATHER-PLASTIC CAP STAMPED "78910"
 - (W) FOUND #4 WEATHER-PLASTIC CAP STAMPED "78910"
 - (X) FOUND #4 WEATHER-PLASTIC CAP STAMPED "78910"
 - (Y) FOUND #4 WEATHER-PLASTIC CAP STAMPED "78910"
 - (Z) FOUND #4 WEATHER-PLASTIC CAP STAMPED "78910"



PCD FILE # VR-17-010

DATE	REVISIONS	BY
09/16/2011
10/20/2011
11/02/2011
11/02/2011
11/02/2011

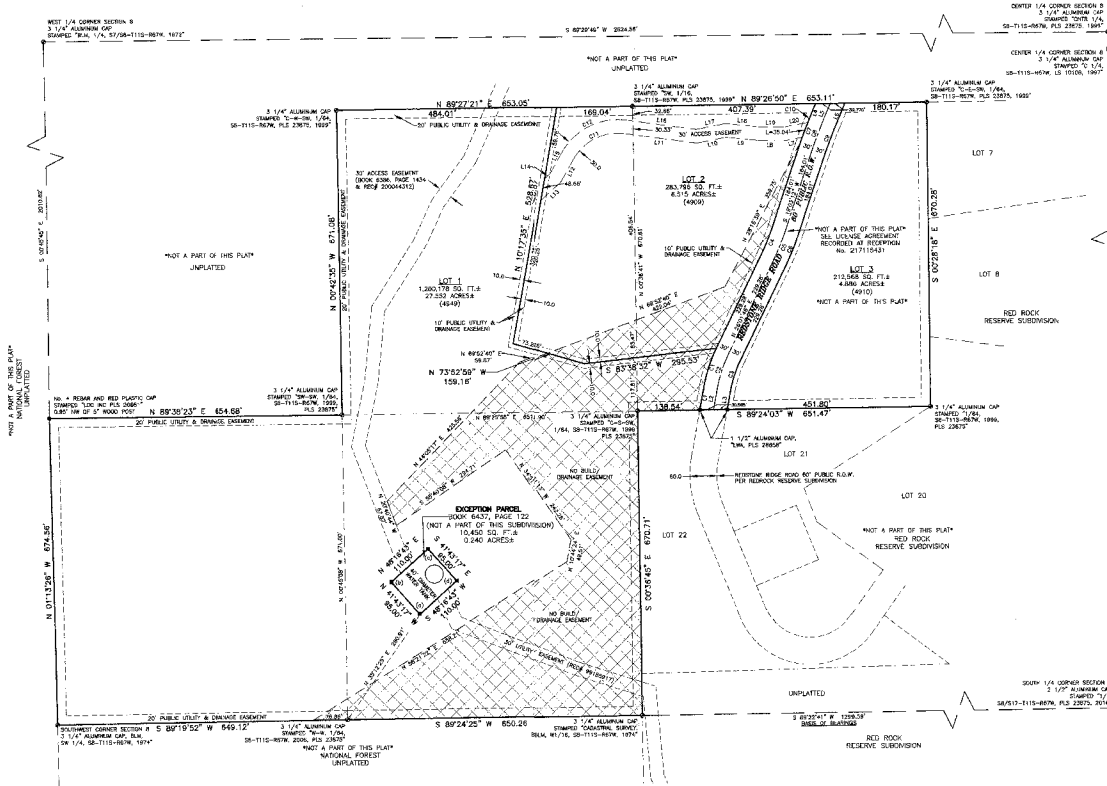
BARRON LAND
 SURVEYING & MAPPING & CONSTRUCTION
 2700 N. Academy Blvd., Suite 211
 Denver, Oregon, 97111 P: 715.962.8227
 F: 715.962.8227
 www.BARRONLAND.com
 PROJECT No. 17-1002 SHEET 2 OF 3

ROCKWOOD MINOR SUBDIVISION FILING No. 2

14063

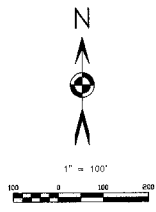
A REPLAT OF LOTS 1 AND 2, ROCKWOOD MINOR SUBDIVISION
 A PORTION OF THE SOUTHWEST QUARTER OF
 SECTION 8, TOWNSHIP 11 SOUTH, RANGE 67 WEST OF THE 6TH P.M.
 COUNTY OF EL PASO, STATE OF COLORADO

AS REPLATTED:



NO.	BEARING	DISTANCE	MONUMENT	REMARKS
1	N 89°27'21" E	653.06'	3 1/4" ALUMINUM CAP STAMPED TW 1/16 58-1115-8676, PLS 22675, 1897	
2	N 89°24'03" W	651.47'	3 1/4" ALUMINUM CAP STAMPED TW 1/16 58-1115-8676, PLS 22675, 1897	
3	S 89°24'22" W	650.26'	3 1/4" ALUMINUM CAP STAMPED TW 1/16 58-1115-8676, PLS 22675, 1897	
4	S 89°27'21" E	653.06'	3 1/4" ALUMINUM CAP STAMPED TW 1/16 58-1115-8676, PLS 22675, 1897	
5	N 89°27'21" E	653.06'	3 1/4" ALUMINUM CAP STAMPED TW 1/16 58-1115-8676, PLS 22675, 1897	
6	N 89°27'21" E	653.06'	3 1/4" ALUMINUM CAP STAMPED TW 1/16 58-1115-8676, PLS 22675, 1897	
7	N 89°27'21" E	653.06'	3 1/4" ALUMINUM CAP STAMPED TW 1/16 58-1115-8676, PLS 22675, 1897	
8	N 89°27'21" E	653.06'	3 1/4" ALUMINUM CAP STAMPED TW 1/16 58-1115-8676, PLS 22675, 1897	
9	N 89°27'21" E	653.06'	3 1/4" ALUMINUM CAP STAMPED TW 1/16 58-1115-8676, PLS 22675, 1897	
10	N 89°27'21" E	653.06'	3 1/4" ALUMINUM CAP STAMPED TW 1/16 58-1115-8676, PLS 22675, 1897	
11	N 89°27'21" E	653.06'	3 1/4" ALUMINUM CAP STAMPED TW 1/16 58-1115-8676, PLS 22675, 1897	
12	N 89°27'21" E	653.06'	3 1/4" ALUMINUM CAP STAMPED TW 1/16 58-1115-8676, PLS 22675, 1897	
13	N 89°27'21" E	653.06'	3 1/4" ALUMINUM CAP STAMPED TW 1/16 58-1115-8676, PLS 22675, 1897	
14	N 89°27'21" E	653.06'	3 1/4" ALUMINUM CAP STAMPED TW 1/16 58-1115-8676, PLS 22675, 1897	
15	N 89°27'21" E	653.06'	3 1/4" ALUMINUM CAP STAMPED TW 1/16 58-1115-8676, PLS 22675, 1897	
16	N 89°27'21" E	653.06'	3 1/4" ALUMINUM CAP STAMPED TW 1/16 58-1115-8676, PLS 22675, 1897	
17	N 89°27'21" E	653.06'	3 1/4" ALUMINUM CAP STAMPED TW 1/16 58-1115-8676, PLS 22675, 1897	
18	N 89°27'21" E	653.06'	3 1/4" ALUMINUM CAP STAMPED TW 1/16 58-1115-8676, PLS 22675, 1897	
19	N 89°27'21" E	653.06'	3 1/4" ALUMINUM CAP STAMPED TW 1/16 58-1115-8676, PLS 22675, 1897	
20	N 89°27'21" E	653.06'	3 1/4" ALUMINUM CAP STAMPED TW 1/16 58-1115-8676, PLS 22675, 1897	
21	N 89°27'21" E	653.06'	3 1/4" ALUMINUM CAP STAMPED TW 1/16 58-1115-8676, PLS 22675, 1897	
22	N 89°27'21" E	653.06'	3 1/4" ALUMINUM CAP STAMPED TW 1/16 58-1115-8676, PLS 22675, 1897	

- LEGEND**
- FOUND SECTION MONUMENT AS NOTED
 - FOUND MONUMENT AS NOTED
 - a) FOUND #5 REBAR w/ ALUMINUM CAP STAMPED "2.00 FT WC PLS 22675"
 - b) FOUND #4 REBAR & PLASTIC CAP, STAMPING ILLEGIBLE
 - c) FOUND #4 REBAR & PLASTIC CAP STAMPED "R100"
 - d) FOUND #4 REBAR
 - 10.W. RIGHT OF WAY
 - ADDRESS OF RECORD



RBD ✓

DATE	BY	REVISIONS	DATE	BY
06/16/2017				
1	Ch. comment		12/15/2017	JAT
2	Layout corrected		11/20/2017	JAT
3	Area adjusted		11/21/2017	JAT

PCD FILE # YR-17-010

BARRON LAND

BOUNDARY & SURVEYING & ENGINEERING • CONSULTATION
 2700 N. Academy Blvd., Suite 211 • P.O. Box 6827
 Colorado Springs, CO 80921 • P: 719.466.8227
 www.BARRONLAND.com

PROJECT No. 17-002 SHEET 3 OF 3