

February 17, 2022

El Paso County
PCD Engineering Division
2880 International Circle, Suite 110
Colorado Springs, CO 80910

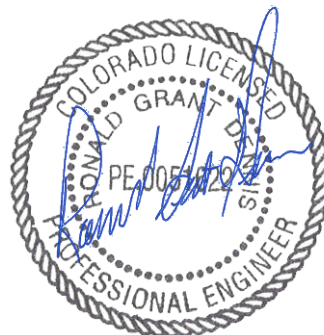
Attn: El Paso County
PCD Engineering Division

The permanent stormwater Best Management Practices (BMPs) for Bent Grass Residential Filing No. 2 revisions to the regional detention Pond WU. Galloway & Company, Inc. has reviewed the attached pond as-built from Galloway & Company, Inc. as appropriate. Based upon this information and information gathered during periodic site visits to the project during significant/key phases of the stormwater BMP installation, Galloway & Company, Inc. is of the opinion that the revisions were constructed in general compliance with the approved Grading & Erosion Control Plan, Construction Plans, and Specifications as filed with El Paso County.

Statement of Engineer in Responsible Charge:

I, Grant Dennis, a registered Professional Engineer in the State of Colorado, in accordance with Sections 5.2 and 5.3 of the Bylaws and Rules of the State Board of Registration for Professional Engineers and Professional Land Surveyors, do hereby certify that I or a person under my responsible charge periodically observed the construction of the above mentioned project. Based on the on-site field observations and review of the pertinent documentation, it is my professional opinion that the required revisions were constructed in general conformance with the approved plans. I have attached the post-construction As-Built drawings. The As-Built drawings accurately depicts the final installation of the revisions as shown on the approved construction drawings.

GALLOWAY
Grant Dennis, P.E.
Colorado No. 0051622

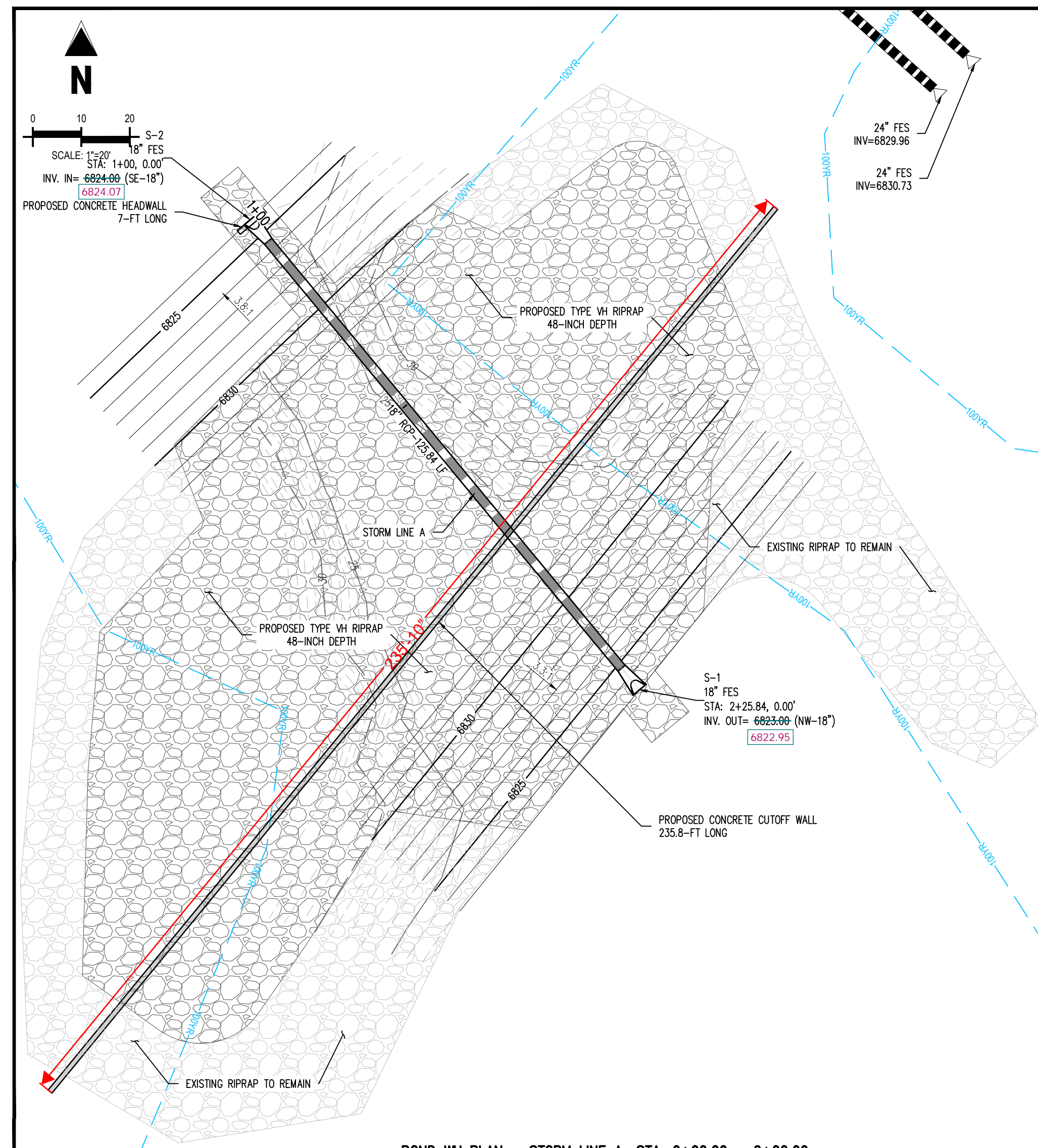


02/17/2022

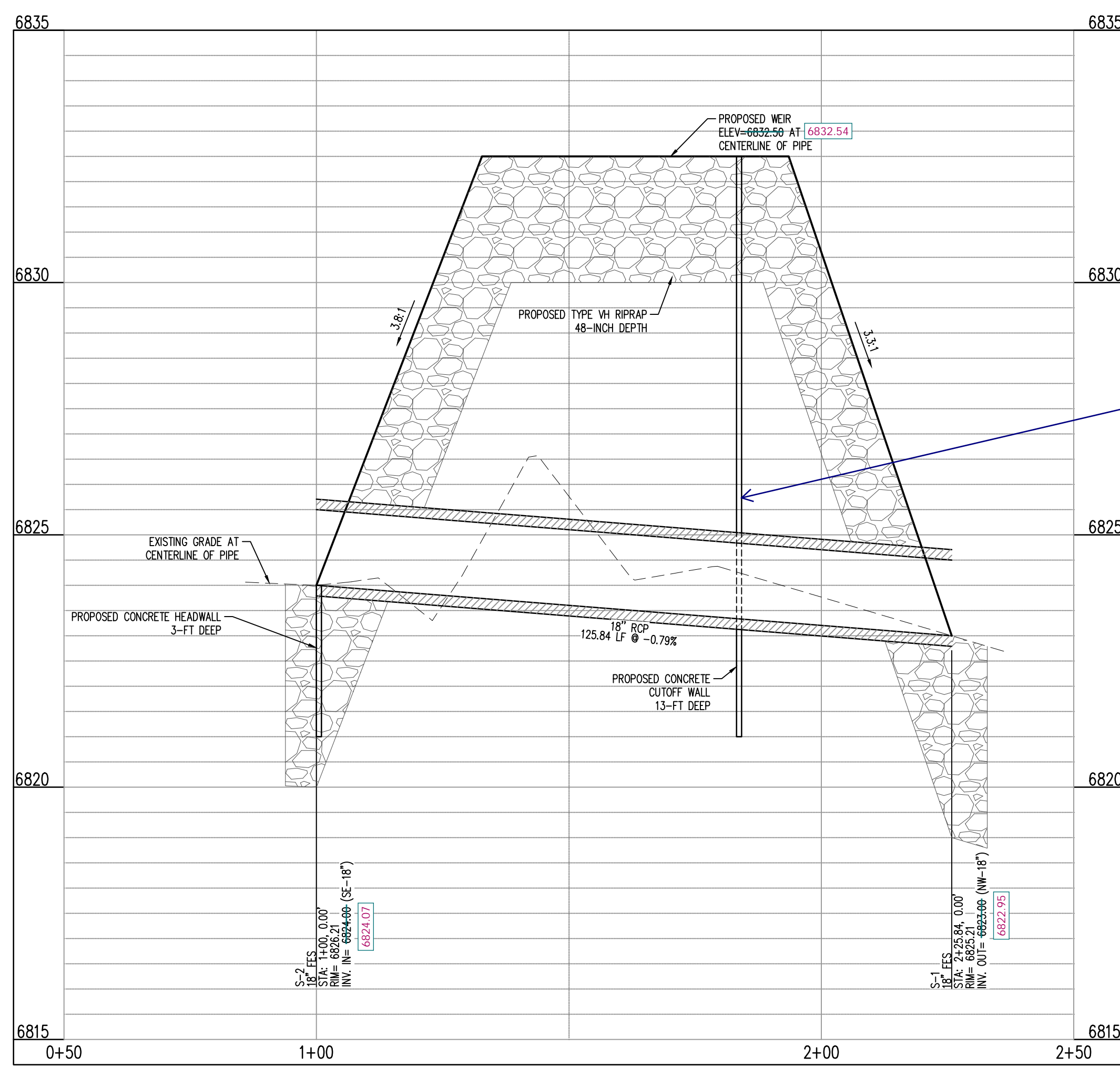
Appendices:

A. Pond WU As-builts



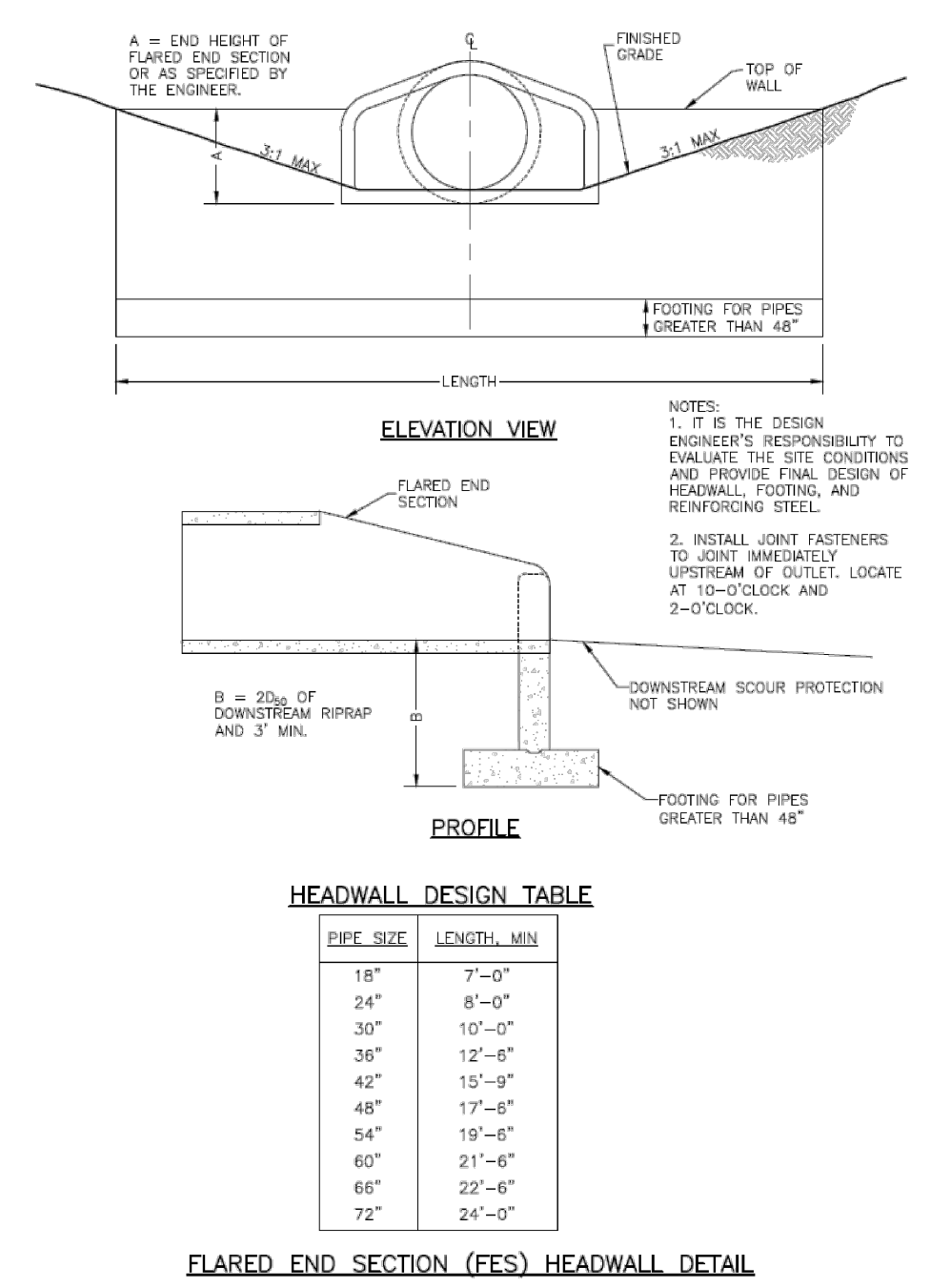


POND WJ PLAN - STORM LINE A: STA. 0+00.00 - 2+00.00



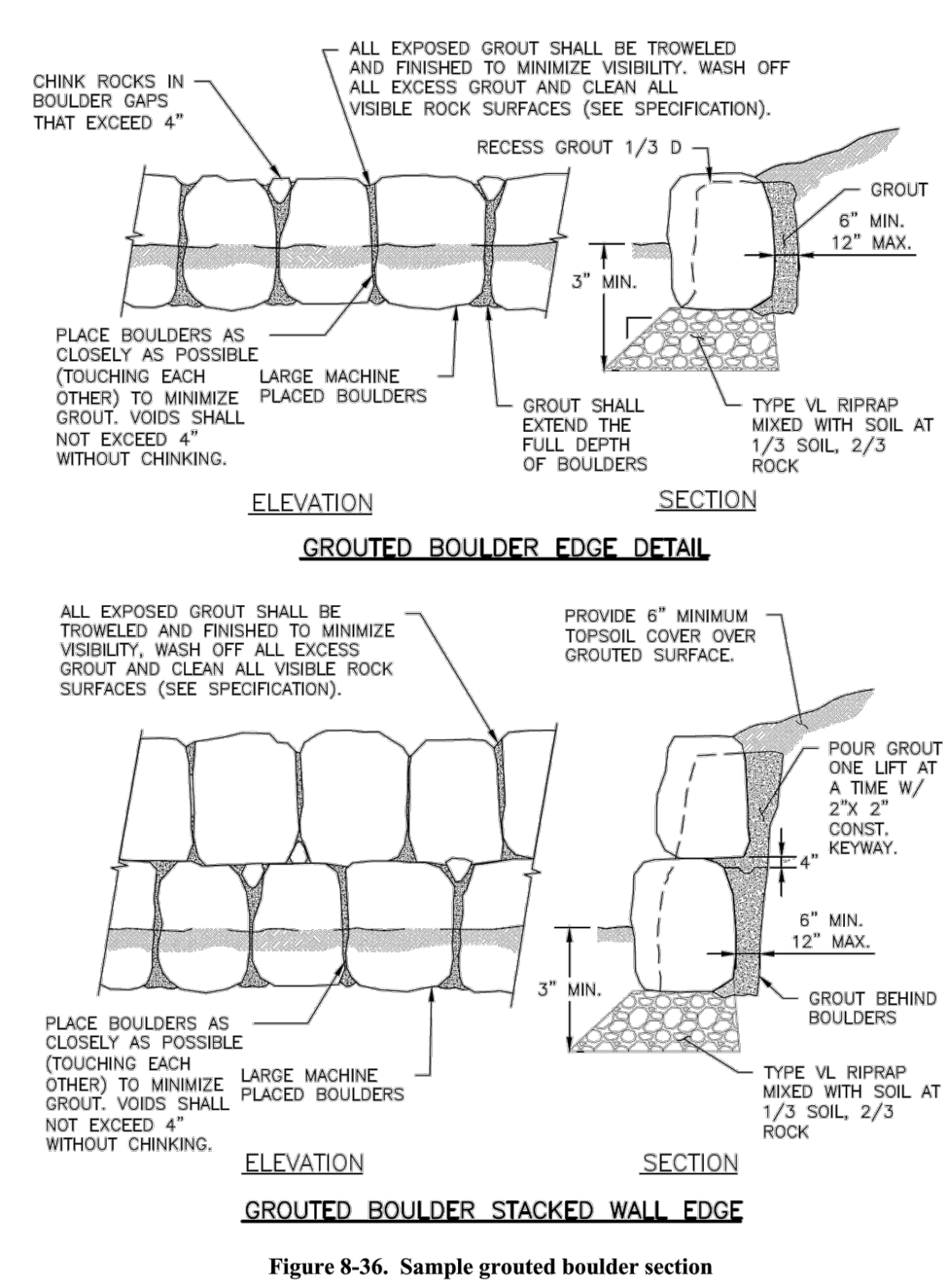
POND WJ PROFILE - STORM LINE A: STA. 0+00.00 - 2+00.00
SCALE: H:1"=20', V:1"=10'

Hydraulic Structures Chapter 9

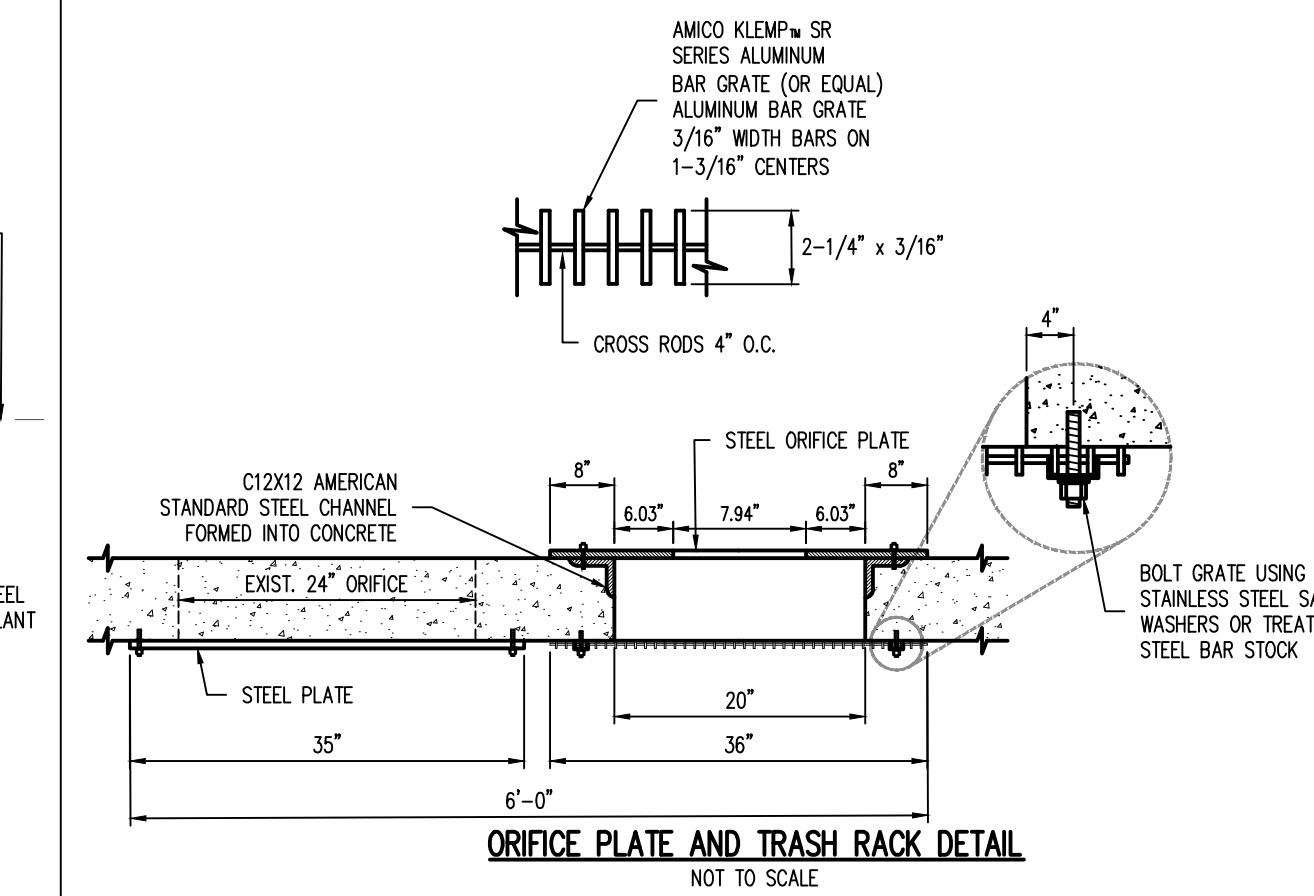
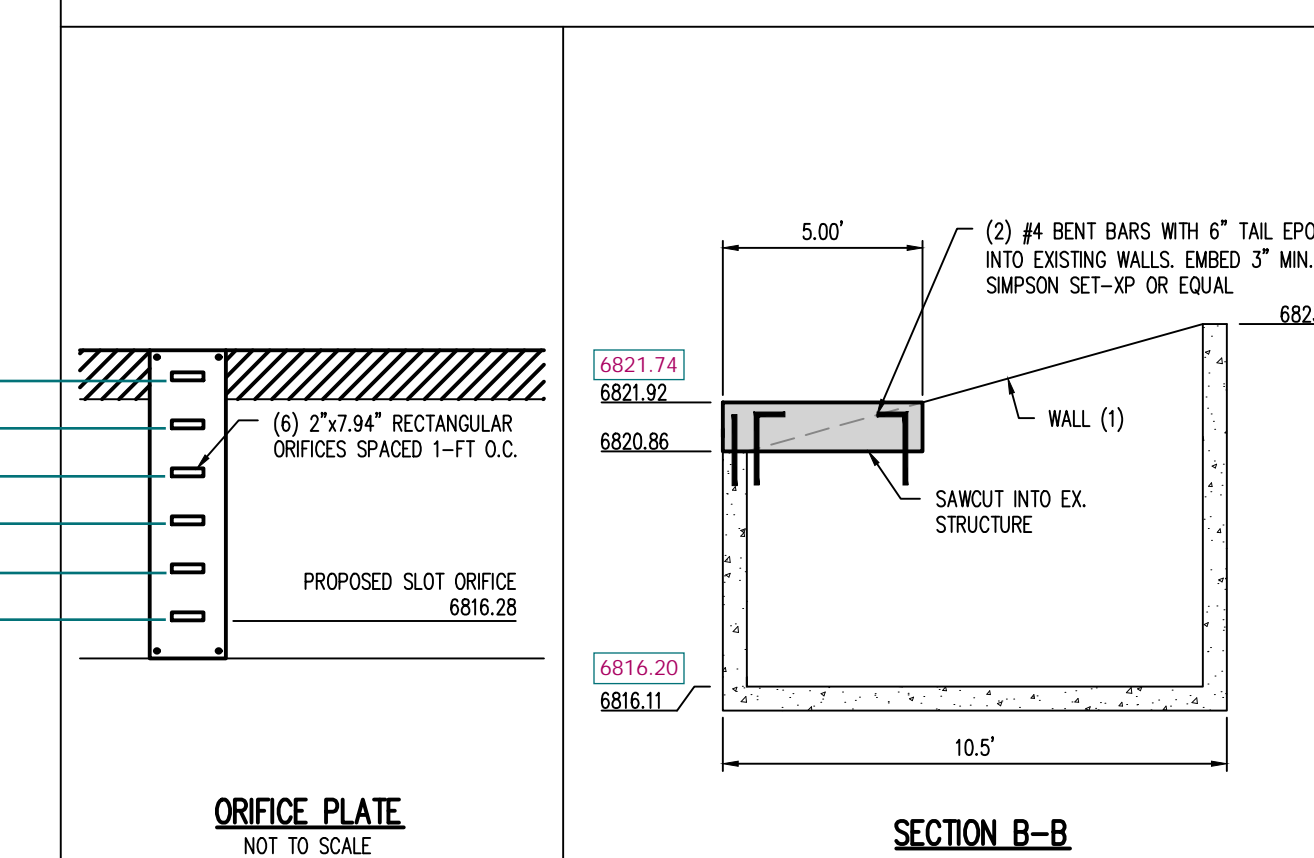
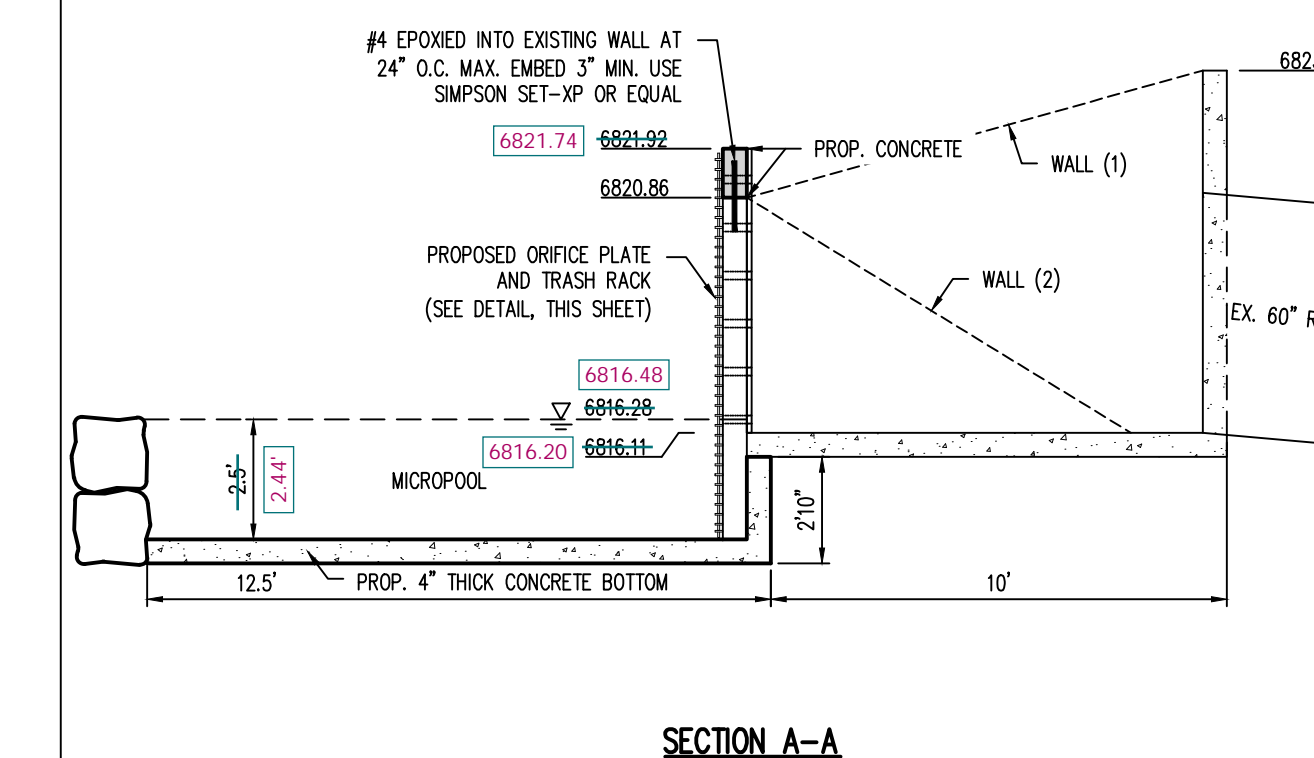
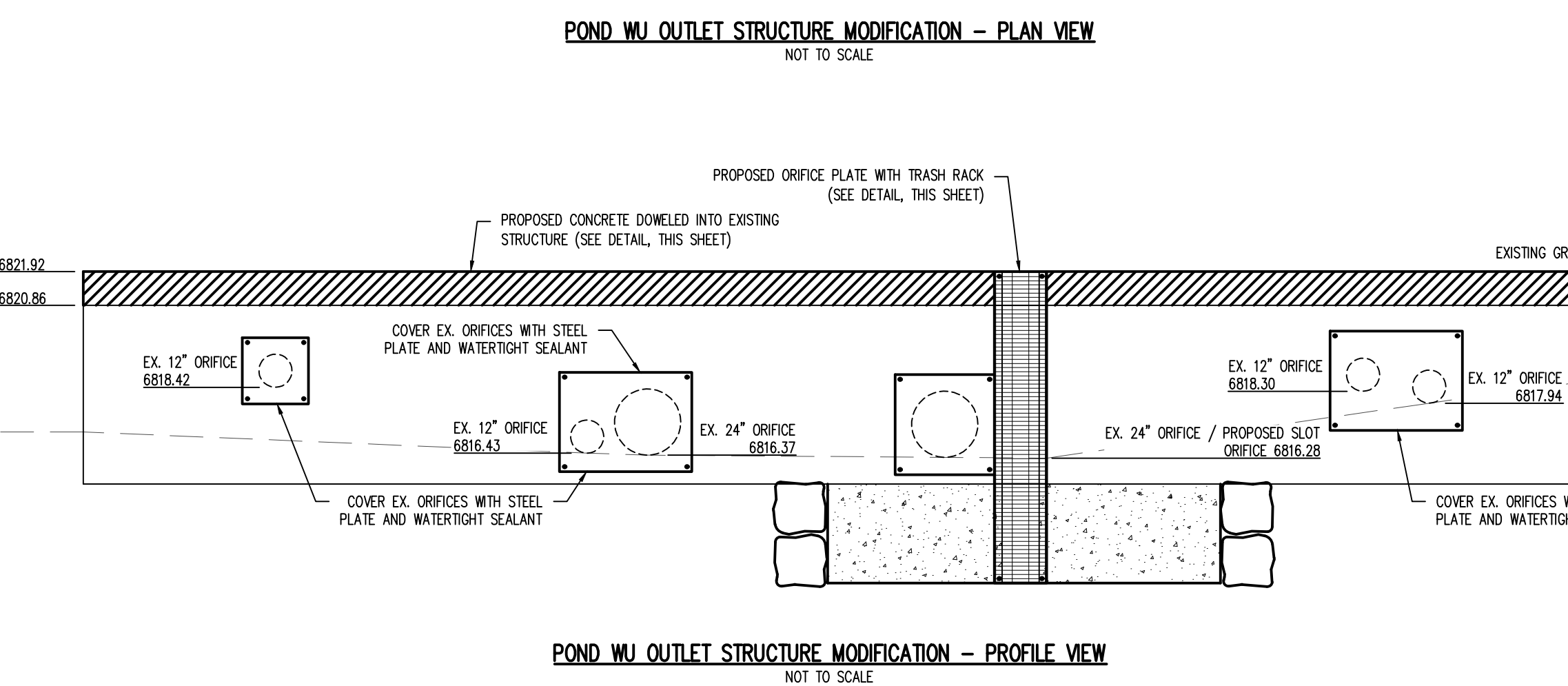
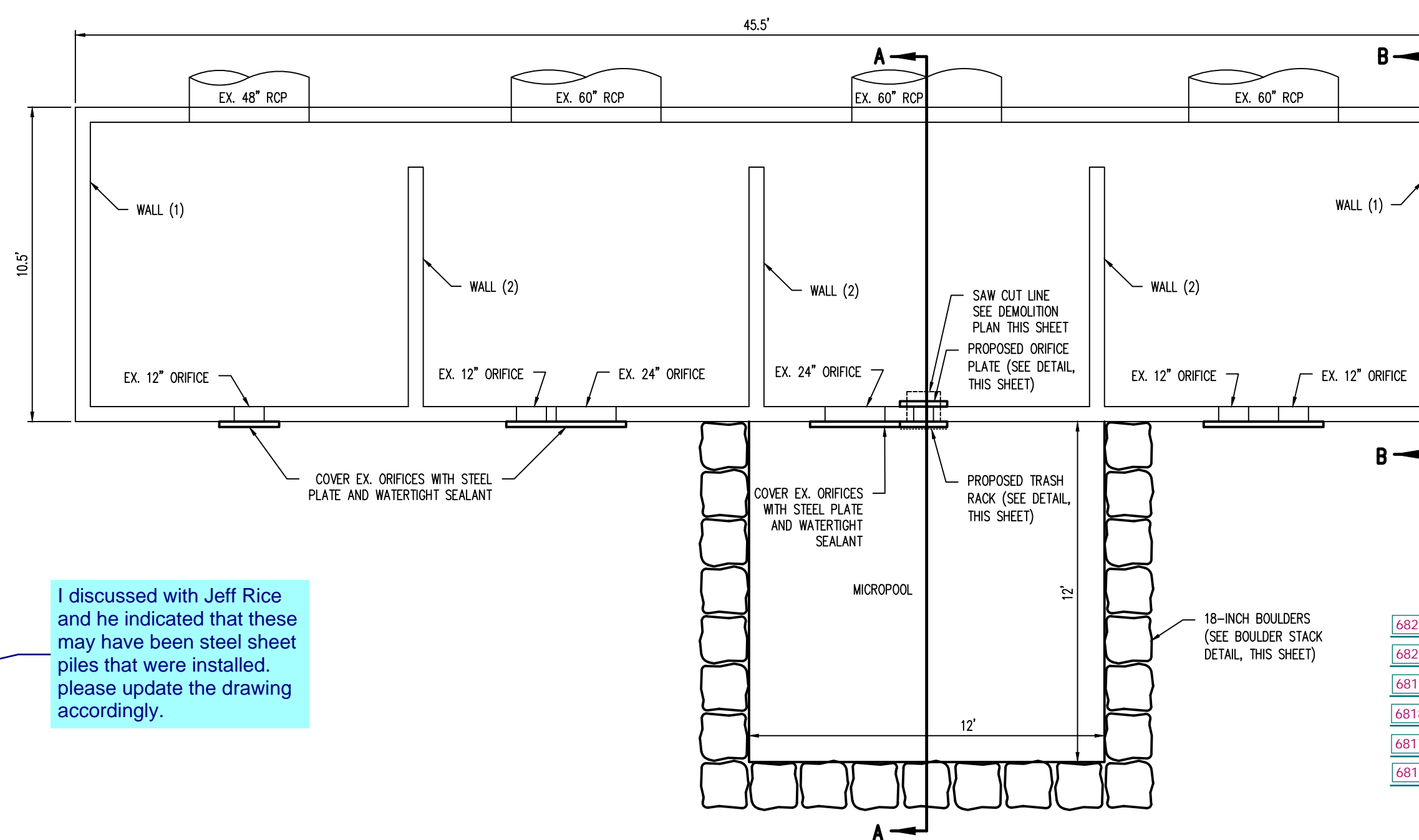
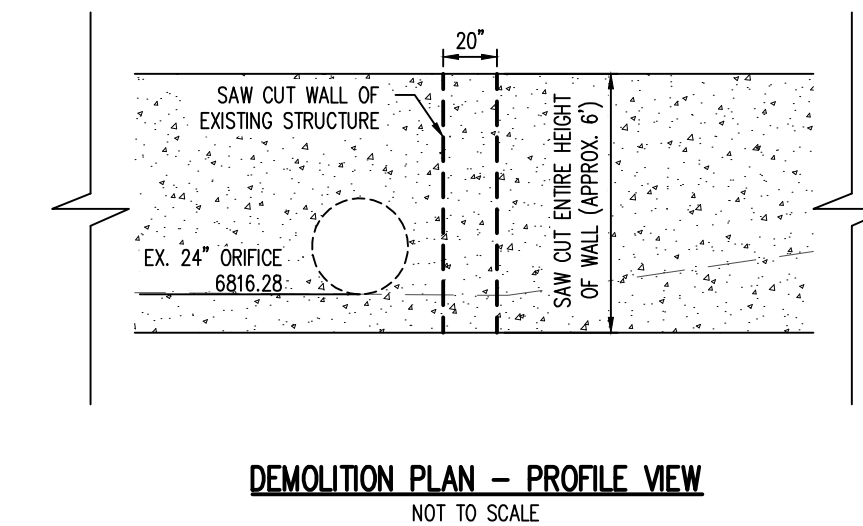
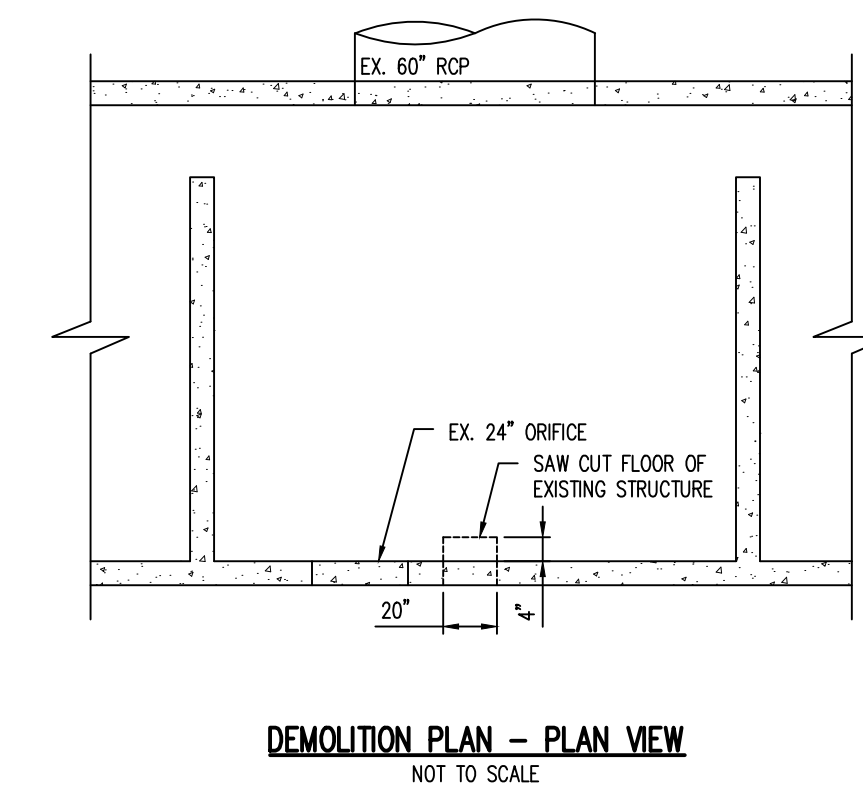


9-62 Urban Drainage and Flood Control District Urban Storm Drainage Criteria Manual Volume 2 November 2016

Open Channels Chapter 8



8-82 Urban Drainage and Flood Control District Urban Storm Drainage Criteria Manual Volume 1 January 2016



I discussed with Jeff Rice and he indicated that these may have been steel sheet piles that were installed. please update the drawing accordingly.

Galloway
1155 Kelly Johnson Blvd., Suite 305
Colorado Springs, CO 80920
719.900.7220
gallowayus.com

PROFESSIONAL ENGINEER
04/20/2020

COPYRIGHT
THESE PLANS ARE AN INSTRUMENT OF SERVICE AND ARE THE PROPERTY OF GALLOWAY, AND MAY NOT BE DUPLICATED, DISCLOSED, OR REPRODUCED WITHOUT THE WRITTEN CONSENT OF GALLOWAY. COPYRIGHTS AND INFRINGEMENTS WILL BE ENFORCED AND PROSECUTED.

CHALLENGER HOMES

FINAL GRADING & EROSION CONTROL PLANS
BENT GRASS RESIDENTIAL FILING NO. 2
FOR
CHALLENGER COMMUNITIES, LLC.
BENT GRASS MEADOWS DRIVE & MERIDIAN ROAD
FALCON, CO 80831 - EL PASO COUNTY

#	Date	Issue / Description	Init.

Project No: CLH000014.20
Drawn By: JDP
Checked By: RGD
Date: 4/17/2020

POND WJ DETAILS

SF1914
5/13/2020

G6.06
Sheet 20 of 29