

Assessor No. 62000-00-461
Zonta 136 acres
13580 Bridle Bit Road

2 parcels (3.55
and 16.68 acres)

Future New Breed Ranch

30' access easement
Book 854 at Page 535

Lot 10, Bridle Bit Ranch
13120 Bridle Bit Road

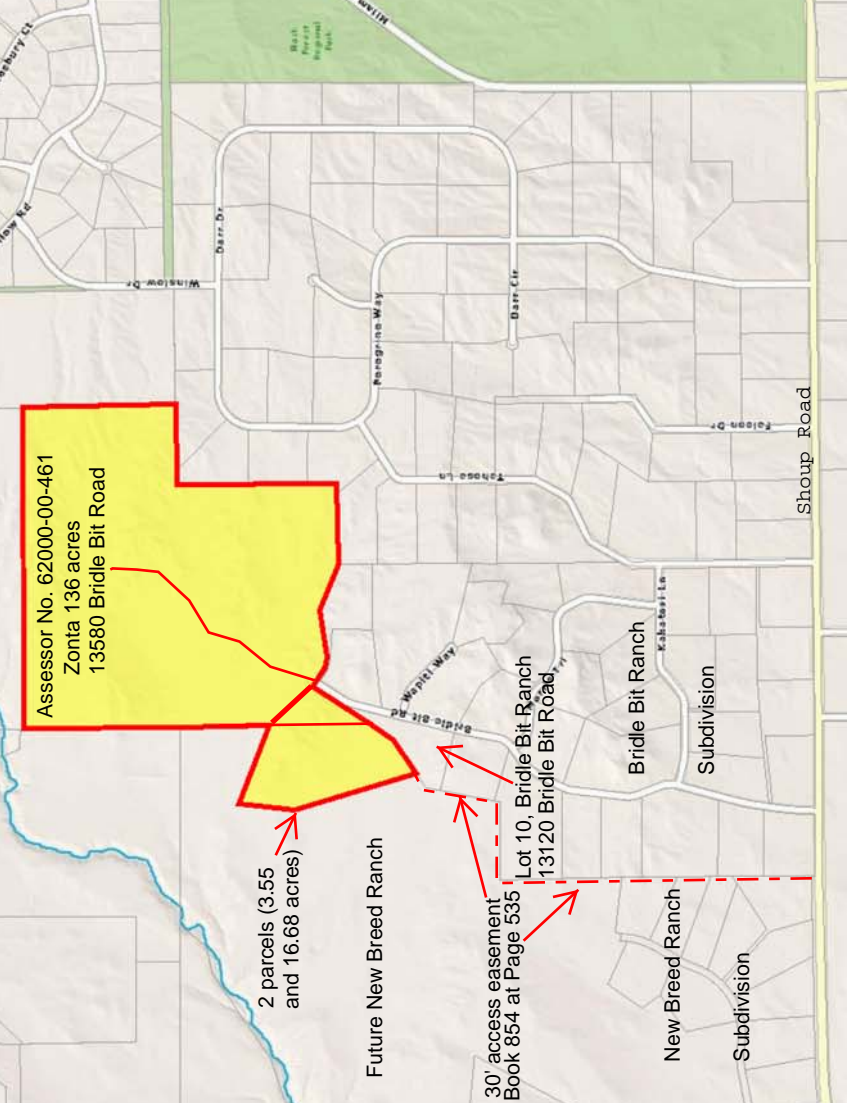
Bridle Bit Ranch

New Breed Ranch

Subdivision

Subdivision

Shoup Road



Sketch of proposal



West Parcel

13250 Bridle Bit Rd

These two parcels would each be reconfigured
to be at least 5 acres to comply with the RR-5 zone

East Parcel

13260m Bridle Bit Road

13120 Bridle Bit Road

Lot 10 will
stay about the
same size

New Breed Ranch

Zonta 136 Acres

Zonta 136 Acres

New Breed Ranch

Bridle Bit Road (County Road)

Wapiti Way (County Road)

Other Bridle Bit Ranch lots