

Kramer Construction, Inc.  
 5030 Silver Drive, Colorado Springs, CO 80921  
 phone 719-243-4188  
 Eastgate Building E  
 1225 E Highway 24, Colorado Springs, CO  
 Units 100, 105, 110, 115, 120, 125 & 130  
 TR A Highway 24 Eastgate Business Park  
 EX Purposed Building e

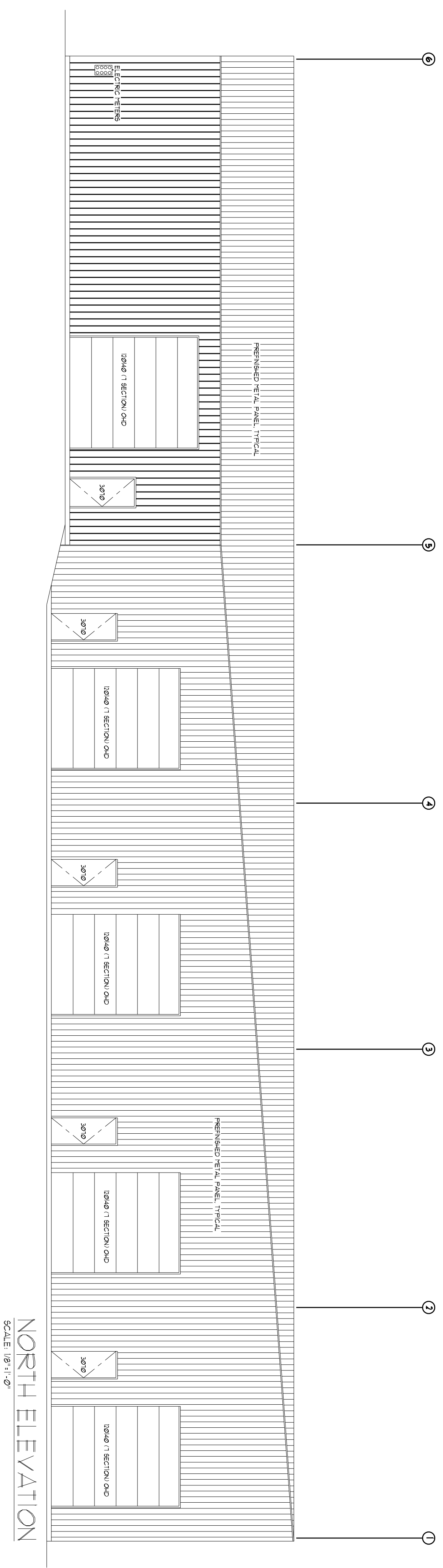
RJM Designs  
 Robert J Maixner  
 ARCHITECT/PLANNER  
 cell (719) 660-6183  
 maxarctec@aol.com



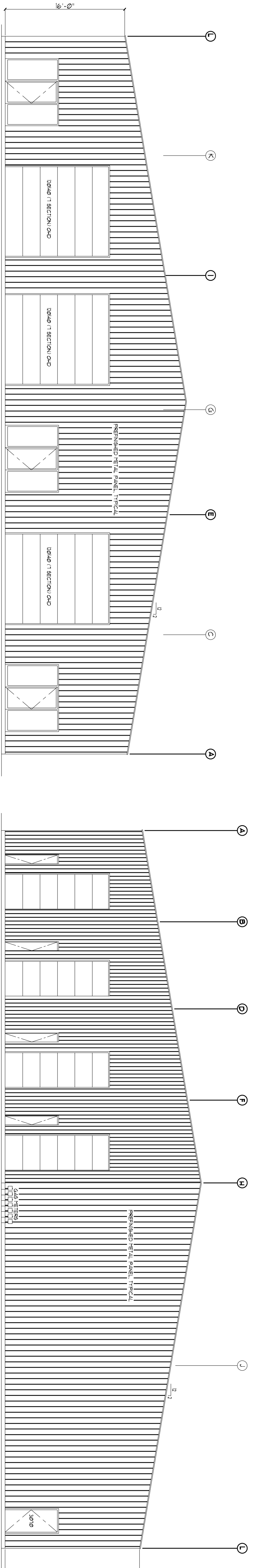
01/25/2019  
 SQUARE FOOTAGE  
 Unfinished Area 17,945 sq

DATE	BY
06/19/2019	RJM
ISSUED	
19-115	
SHEET NO.	

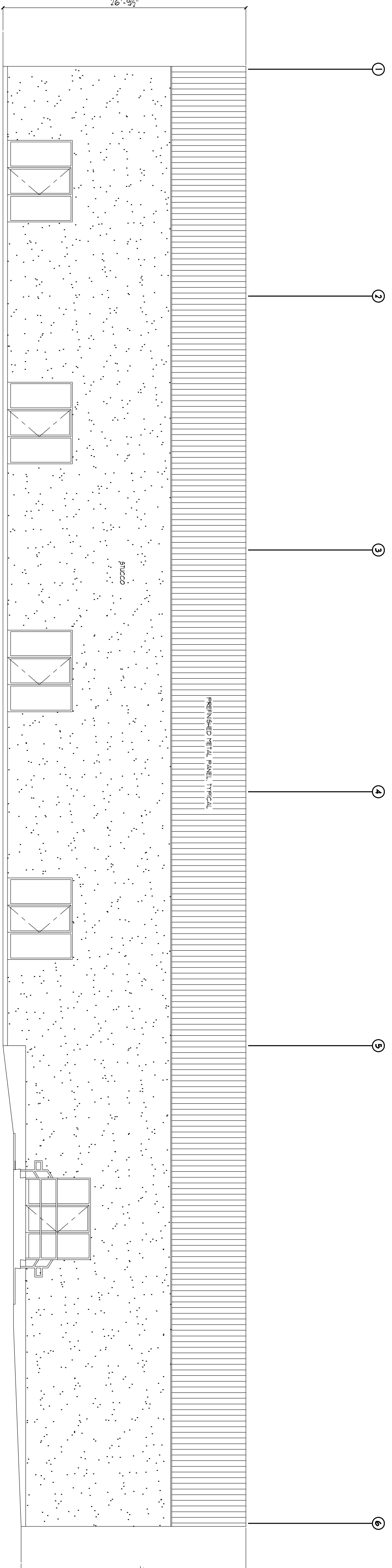
A = 2



NORTH ELEVATION  
 SCALE 1/8" = 1'-0"

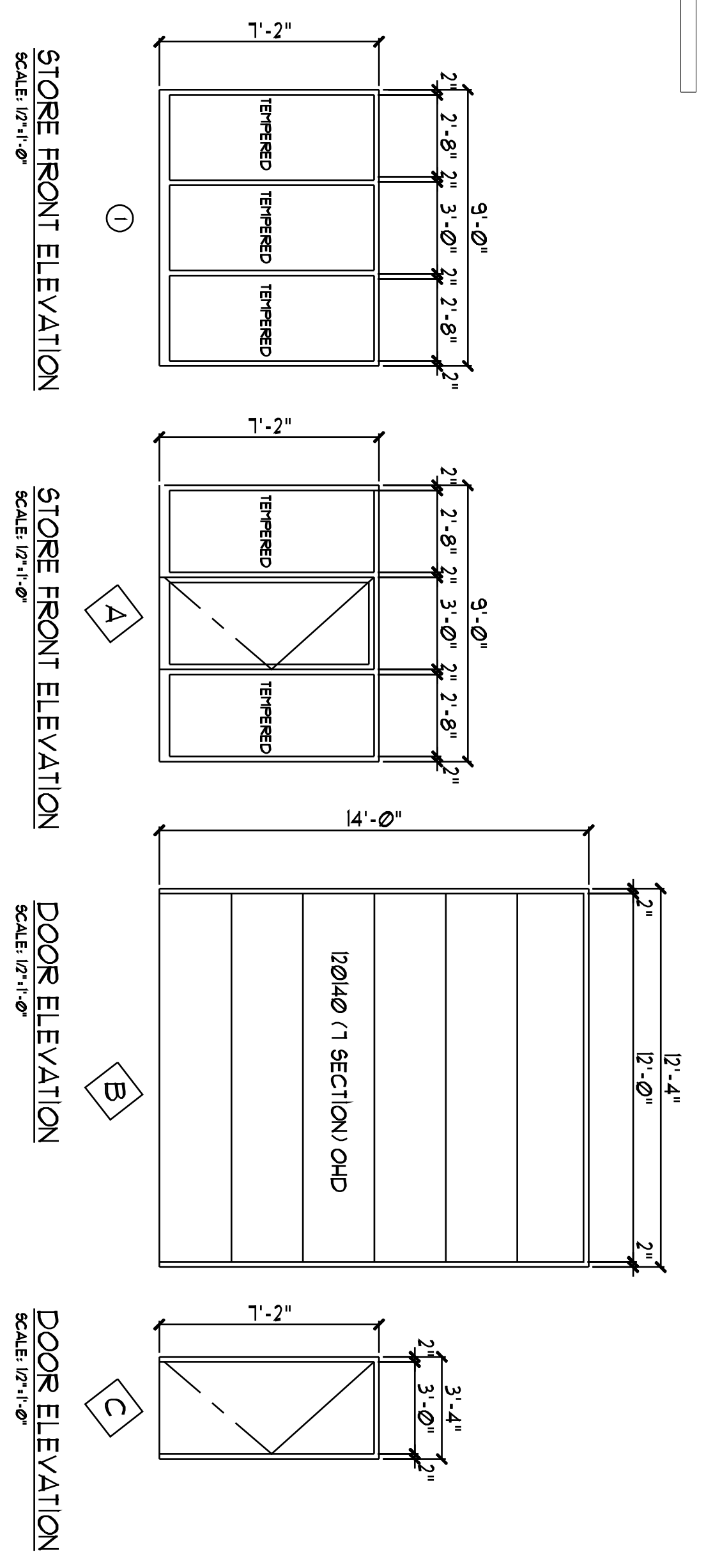


WEST ELEVATION  
 SCALE 1/8" = 1'-0"



SOUTH ELEVATION  
 SCALE 1/8" = 1'-0"

EAST ELEVATION  
 SCALE 1/8" = 1'-0"



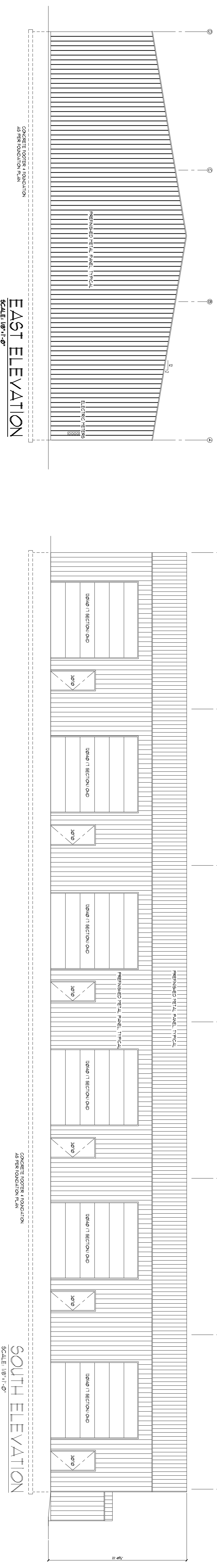
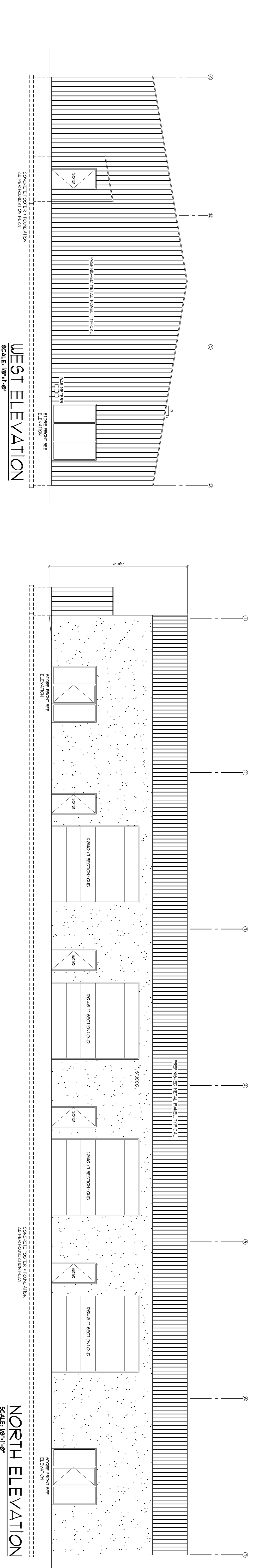
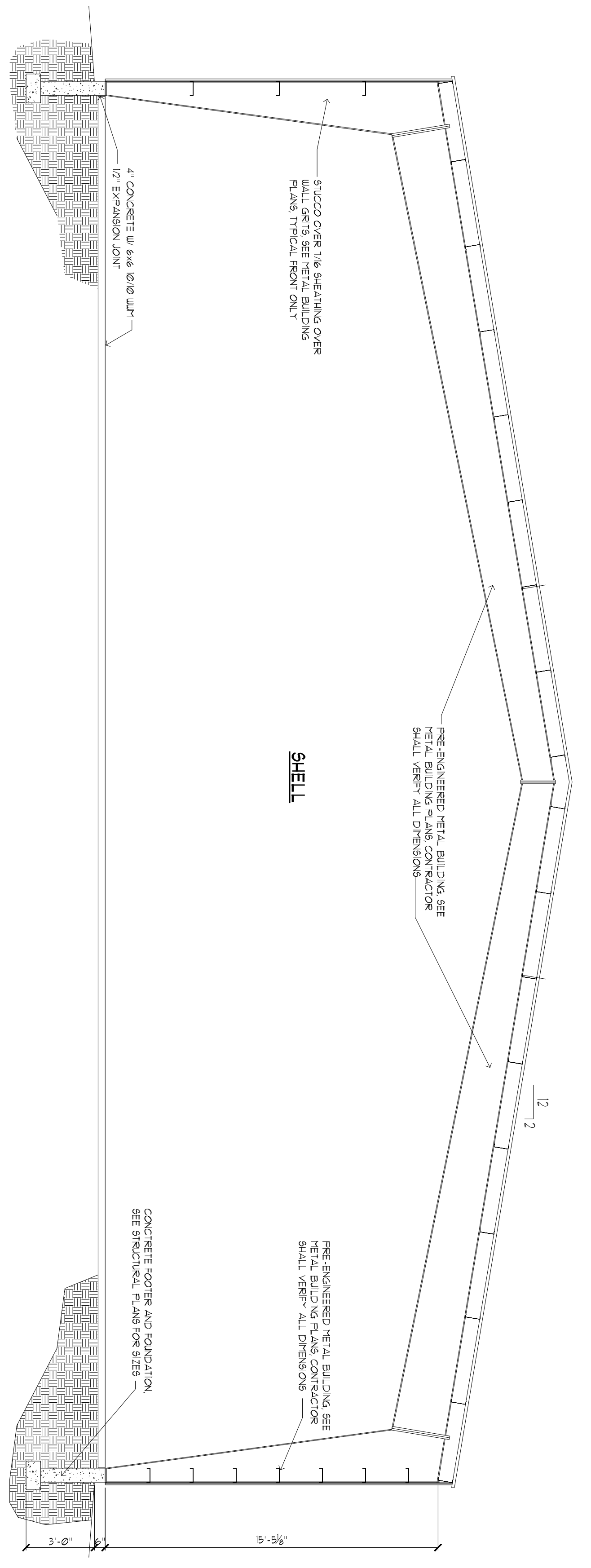
### DOOR & WINDOW SCHEDULE

MARK	SIZE	DOOR TYPE	DOOR MAT'L.	FRAME FINISH	FRAME MAT'L.	HURDLE GROUP	REMARKS
4	3'-0" x 7'-0"	SR	AL	AN	AL	GP 4	ILLUMINATED EXIT SIGN
6	7'-0" x 4'-0"	OVD	STL	PRE-FIN	UD	PR	120/140 (1 SECTION) OVD
6	3'-0" x 7'-0"	FL	LN	PR	LN	GP 6	120/140 (1 SECTION) OVD
WINDOW 1	3'-0" x 7'-0"				AL		

GROUP 1 LABELED DOOR CLOSER STROKE SEAL, LATCH	GROUP 2 BITS PASSAGE LEVER KNOBS LOCKET	GROUP 3 TRACK KNOBS	GROUP 4 BITS CLOSER THRESHOLD FULL PLATE KETED LOCKSET	GROUP 5 BITS CLOSER LOCK DOOR FALL KETED LOCKSET	GROUP 6 BITS FULL PLATE KETED LOCKSET	ADDITIONALS: AL: ALUMINUM AN: ANODIZED BR: BRASS CMT: CASHEMINT FL: FLUSH FPO: FINISHED HN: HOLLOW METAL HCU: HOLLOW CORE WOOD PI: PAINT	PICT: PICTURE SR: STAINLESS ST: STAIN STL: STEEL UD: WOOD
---	---	---------------------------	---	---	--	---	---

NOTE: ALL COLORS WILL BE SELECTED BY OWNER  
NOTE: ALL GLASS UNLESS NOTED OTHERWISE SHALL BE TINTED GLASS.  
OR WITHIN 24" OF AN ARC OF A DOOR SHALL BE TINTED GLASS.



	<b>RJM Designs</b> Robert J Maixner <b>ARCHITECT/PLANNER</b> cell (719) 660-6183 maxarcotec@aol.com	<b>Kramer Construction, Inc.</b> 5030 Silver Drive, Colorado Springs, CO 80921 phone 719-243-4188 <b>Eastgate Building</b> 1245 E Highway 24, Colorado Springs, CO Suites 105, 110, 115, 120, 125, 130 TR A Highway 24 Eastgate Business Park, EX Purposed Building B	85/0506 57
DRAWN RJM CHECKED RJM DATE 06 / 10 / 2019 BY 19-102 SHEET NO	<b>SQUARE FOOTAGE</b> 10 / 72 / 2019 Floor Plan 9179 sq	<b>A=2</b>	