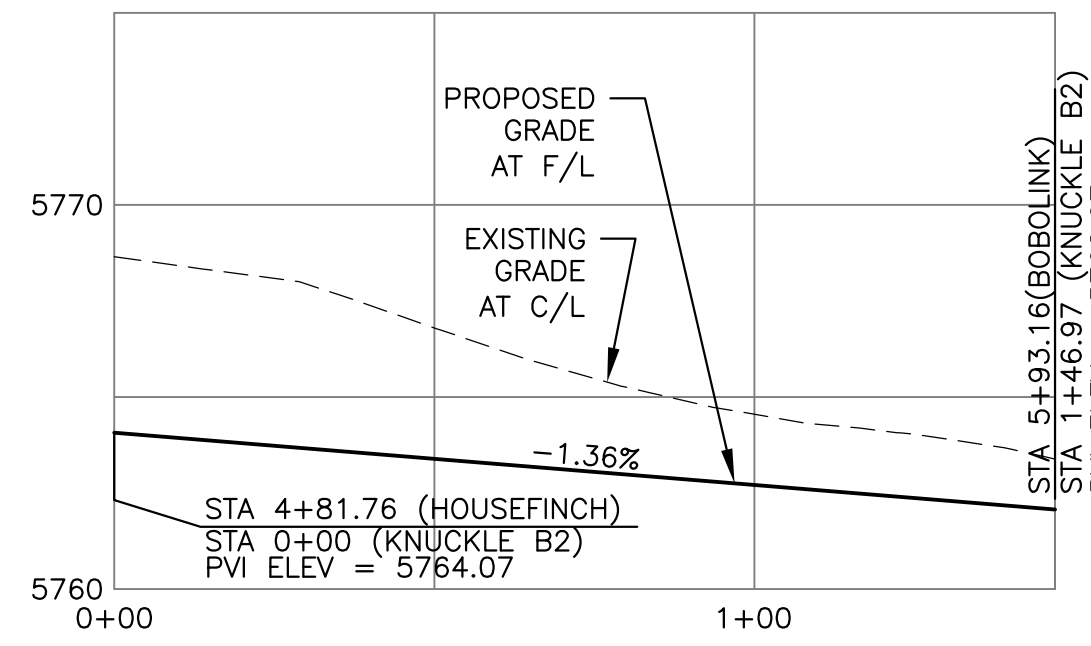
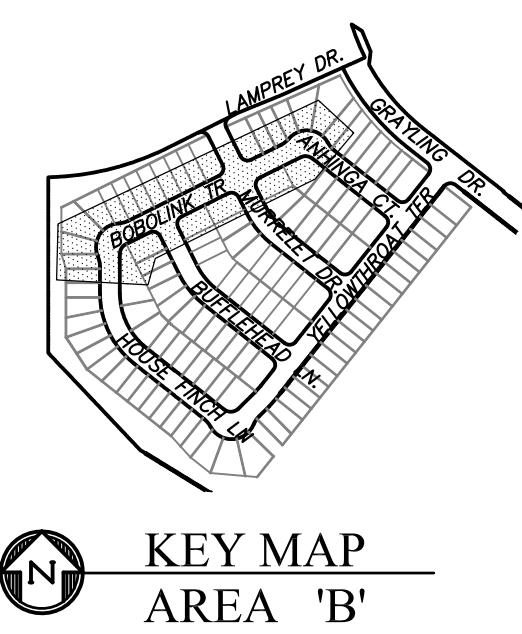
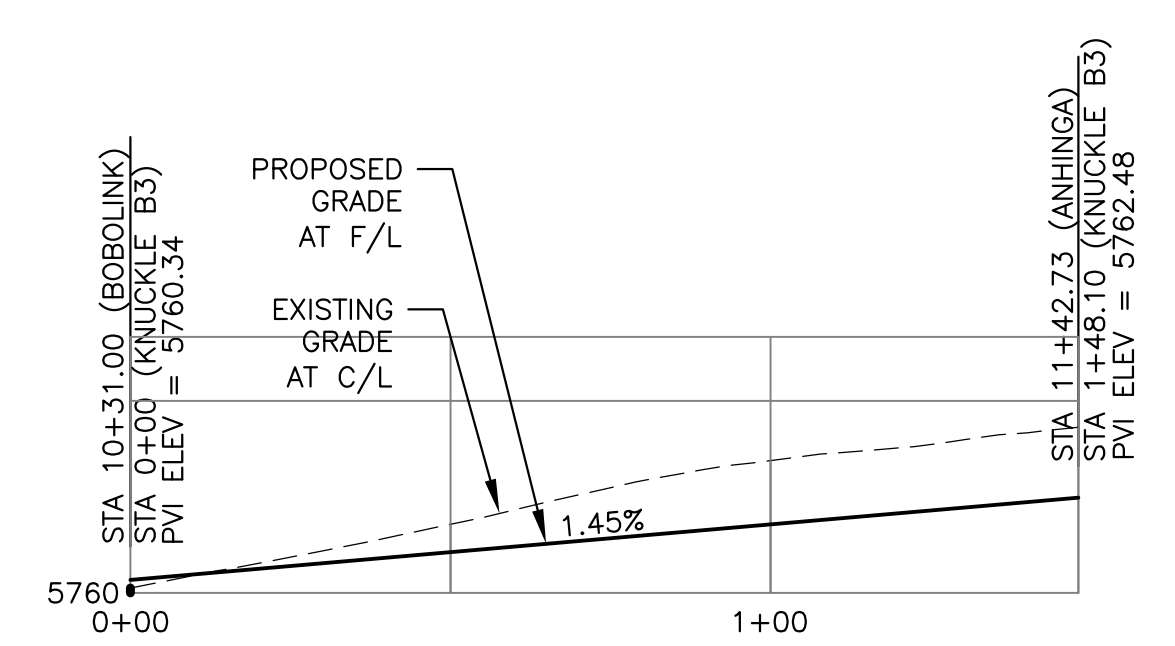


- NOTES**
1. ALL SPOT ELEVATIONS ARE FLOW LINE UNLESS OTHERWISE NOTED.
 2. SEE GRADING PLAN FOR GRADING INFORMATION.
 3. ALL STORM SEWER SHALL BE CLASS III RCP.
 4. ALL MHS SHALL BE TYPE 1 UNLESS OTHERWISE NOTED.

- 1 CURVE DATA ID
- 2 CURB TRANSITIONS
- 3 PEDESTRIAN RAMP, SEE SHEET C10.1

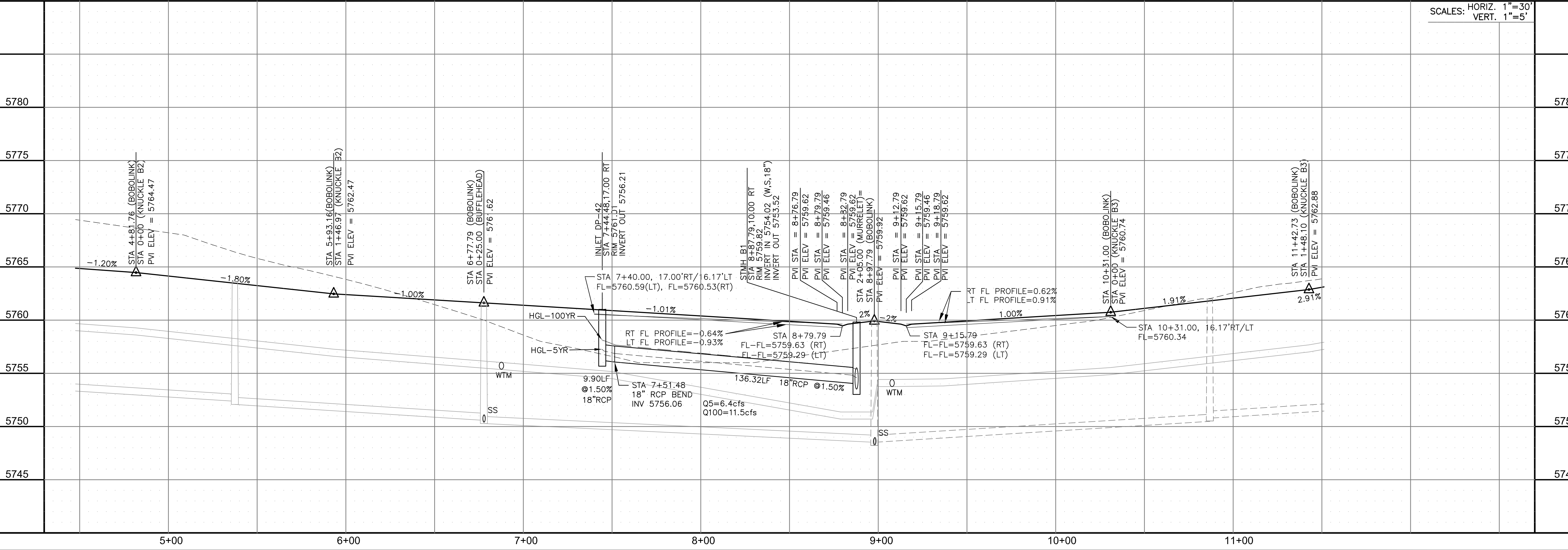
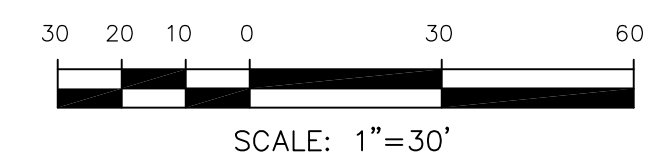
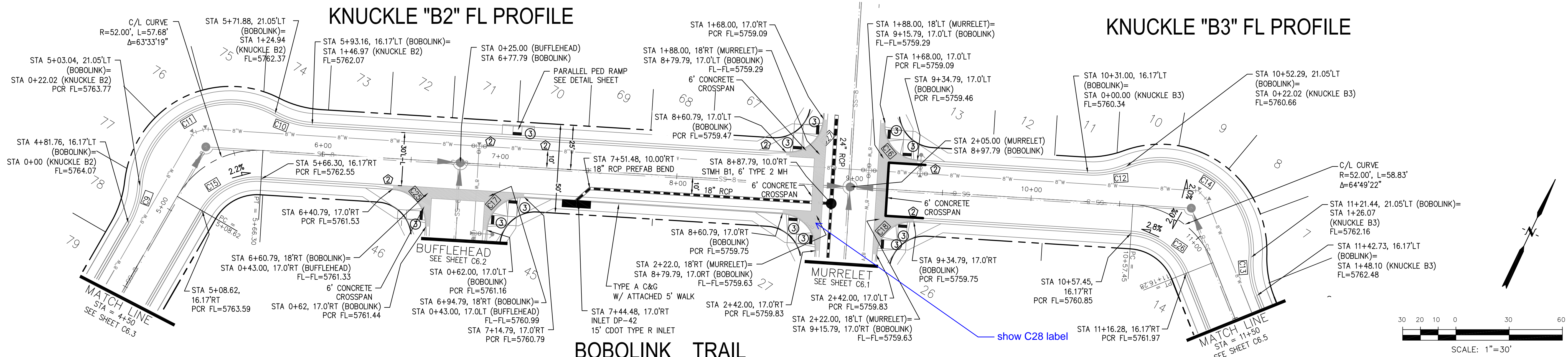


CURVE TABLE			
CURVE	LENGTH	RADIUS	DELTA
C9	22.02'	48.83	25°50'31"
C10	22.02'	48.83	25°50'31"
C11	102.92'	51.17	115°14'20"
C12	22.02'	48.83	25°50'31"
C13	22.02'	48.83	25°50'31"
C14	104.05'	51.17	116°30'24"
C15	39.74'	35.83	63°33'19"
C16	31.42'	20.00	90°00'00"
C17	31.42'	20.00	90°00'00"
C18	31.42'	20.00	90°00'00"
C25	31.42'	20.00	90°00'00"
C26	40.54'	35.83	64°49'22"
C27	31.42'	20.00	90°00'00"
C28	31.42'	20.00	90°00'00"



KNUCKLE "B2" FL PROFILE

KNUCKLE "B3" FL PROFILE



SCALES: HORIZ. 1"=30'
VERT. 1"=5'

CORE ENGINEERING GROUP
15004 1ST AVENUE S.
BURNING WOODS, CO 80906
CONTACT: RICHARD L. SCHINDLER, P.E.
EMAIL: Rich@cegi.com

DATE: _____
DESCRIPTION: _____
NO: _____

PREPARED FOR: **LORSON, LLC**
212 N. WAHSATCH AVE, SUITE 301
COLORADO SPRINGS, COLORADO 80903
CONTACT: JEFF MARK

PROJECT: **THE HILLS AT LORSON RANCH FILING NO. 1**
FONTAINE BLVD, WALLELL DR
COLORADO SPRINGS, COLORADO

DRAWN: RLS
DESIGNED: RLS
CHECKED: RLS

STREET / STORM - AREA 'B'
BOBOLINK TRAIL
STA 4+50 TO 11+50

DATE: MARCH 23, 2021
PROJECT NO. 100.062
SHEET NUMBER C6.4
TOTAL SHEETS: 42