

Planning and Community Development
2880 International Cir. Suite 110
Colorado Springs, CO 80910

FIRST-CLASS



US POSTAGE IMPITNEY BOWES



ZIP 80910 **\$ 000.630**
02 7H
0001332609 JAN 17 2024

5233302019
LIBUYOTIKI2 PROPERTIES LLC
8281 SPRAGUE WAY
COLORADO SPRINGS, CO 80908



NOTICE 80910 02/22/2024

RETURN TO SENDER
NOT DELIVERABLE AS ADDRESSED
UNABLE TO FORWARD
SORT IN MANUAL ONLY NO AUTOMATION
BL: 3698899955

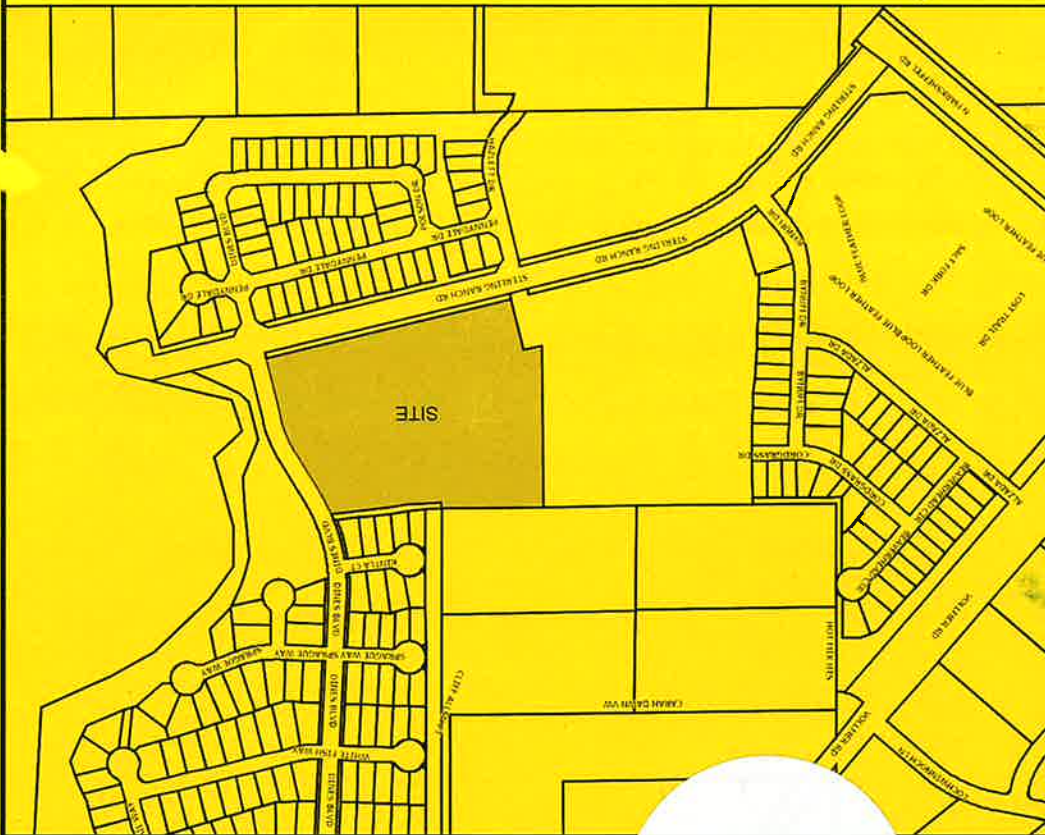
NOTICE OF LAND

COPYRIGHT 2022 by the Board of County Commissioners, El Paso County, Colorado. All rights reserved. No part of this document or data contained hereon may be reproduced, used to prepare derivative products, or distributed without the specific written approval of the Board of County Commissioners, El Paso County, Colorado. This document was prepared from the best data available at the time of printing. El Paso County, Colorado, makes no claim as to the completeness or accuracy of the data contained hereon.



940921080050330

Please report any parcel discrepancies to:
El Paso County Assessor
1675 W. Garden of the Gods Rd.
Colorado Springs, CO 80907



UNADDRESSED.
SEE VICINITY MAP (LEFT).

OWNER:
CLASSIC SRJ LAND, LLC
PARCEL NO.:
5233302049

FILE NO.:
SF241
EL PASO COUNTY
PARCEL INFORMATION