

GENERAL NOTES

- PRIOR TO BEGINNING ANY WORK ON THE SITE, THE CONTRACTOR SHALL CONTACT THE OFFICE OF THE OWNER'S REPRESENTATIVE FOR SPECIFIC INSTRUCTIONS RELEVANT TO THE SEQUENCING OF WORK.
- READ THOROUGHLY AND BECOME FAMILIAR WITH THE DRAWINGS, NOTATIONS, DETAILS AND SPECIFICATIONS FOR THIS AND RELATED WORK PRIOR TO CONSTRUCTION.
- LANDSCAPE CONTRACTOR SHALL PROVIDE ALL LABOR, MATERIALS AND SERVICES NECESSARY TO FURNISH AND INSTALL LANDSCAPE ELEMENTS AND PLANTINGS AS SPECIFIED HEREIN AND AS SHOWN ON THESE PLANS.
- REPORT ANY DISCREPANCIES IN THE LANDSCAPE PLANS IMMEDIATELY TO THE OWNER/ OWNER'S REPRESENTATIVE.
- NO MATERIAL SUBSTITUTIONS SHALL BE MADE WITHOUT LANDSCAPE ARCHITECT'S APPROVAL. ALTERNATE MATERIALS OF SIMILAR SIZE AND CHARACTER MAY BE CONSIDERED IF SPECIFIED PLANT MATERIALS CANNOT BE OBTAINED. OWNER'S REPRESENTATIVE RESERVES THE RIGHT TO REVISE PLANT LIST AS DEEMED NECESSARY.
- ALL PLANT LOCATIONS ARE APPROXIMATE, ADJUST AS NECESSARY TO AVOID CONFLICTS.
- QUANTITIES OF MATERIALS SHOWN IN PLANT SCHEDULE TAKE PRECEDENCE OVER QUANTITIES SHOWN ON THE LANDSCAPE PLAN. LANDSCAPE CONTRACTOR SHALL BE RESPONSIBLE FOR VERIFYING ALL QUANTITIES IN PLANT SCHEDULE.
- CONTRACTOR SHALL LOCATE ALL UTILITIES BEFORE WORK. UTILITIES HAVE BEEN SHOWN ON PLAN FOR ROUGH LOCATION OF SERVICES. LOCATE EXACT UTILITY LOCATIONS BY CONTACTING "CALL BEFORE YOU DIG" AT (800) 922-1987 OR 811. CONTRACTOR WILL BE RESPONSIBLE FOR THE REPAIR OF ANY DAMAGE HE MAY CAUSE TO UTILITIES.
- REMOVE ALL RUBBISH, EQUIPMENT AND MATERIAL AND LEAVE THE AREA IN A NEAT, CLEAN CONDITION EACH DAY. MAINTAIN PAVED AREAS UTILIZED FOR HAULING EQUIPMENT AND MATERIALS BY OTHER TRADES IN A CLEAN AND UNOBSTRUCTED CONDITION AT ALL TIMES.
- STORAGE OF ANY MATERIALS, BUILDINGS, VEHICLES OR EQUIPMENT, FENCING AND WARNING SIGNS SHALL BE MAINTAINED THROUGHOUT THE SITE WORK AND CONSTRUCTION PERIODS BY THE CONTRACTOR.
- CONTRACTOR TO UTILIZE STOCKPILED TOPSOIL FROM GRADING OPERATION AS AVAILABLE. TILL INTO TOP 6" OF SOIL. FOR GRADING SEE CIVIL ENGINEER DRAWINGS.
- A 3' DIAMETER CLEAR SPACE SHALL BE MAINTAINED AROUND ALL FIRE HYDRANTS.

TREE PLANTING NOTES

- ALL TREE LOCATIONS ARE APPROXIMATE; ADJUST AS NECESSARY TO AVOID CONFLICTS. OBTAIN OWNER'S REPRESENTATIVE'S APPROVAL OF LOCATIONS PRIOR TO PLANTING TREES.
- ALL PLANT MATERIAL SHALL BE WELL-FORMED AND DEVELOPED IN GOOD CONDITION, HEALTHY AND DISEASE-FREE, AND BE TYPICAL OF THE SPECIES. PLANTS SHALL COMPLY IN ALL APPLICABLE RESPECTS WITH ACCEPTABLE STANDARDS AS SET FORTH IN THE COLORADO NURSERY ACT OF 1965 - TITLE 35, ARTICLE 25, CRS 1974 (SEE LANDSCAPE THE NURSERY ACT).
- OWNER AND OWNER'S REPRESENTATIVE RESERVES THE RIGHT TO REJECT AT ANY TIME OR PLACE PRIOR TO FINAL ACCEPTANCE OF WORK, ANY AND ALL PLANTS WHICH, IN THEIR OPINION, FAIL TO MEET THE REQUIREMENTS OF THE SPECIFICATIONS.
- AT THE COMPLETION OF PLANTING OPERATIONS ALL PLANTS SHALL BE INSPECTED BY THE OWNER AND OWNER'S REPRESENTATIVE. CONTRACTOR SHALL REPLACE IMMEDIATELY ANY PLANTS NOT IN HEALTHY AND VIGOROUS CONDITION AT THAT TIME AT NO EXPENSE TO THE OWNER. ANY PLANT NOT IN HEALTHY CONDITION DURING THE WARRANTY PERIOD SHALL BE REPLACED AS PER THE ORIGINAL SPECIFICATIONS, AT NO CHARGE TO THE OWNER.
- PLANTING BEDS RECEIVING MULCH ARE TO BE FREE OF WEEDS AND GRASS. WOOD MULCH IS TO BE SHREDDED CEDAR WOOD MULCH UNLESS OTHERWISE SPECIFIED. POROUS WEED BARRIER FABRIC. SHALL BE INSTALLED WHERE NOTED IN THE DETAILS.
- ALL PLANT MATERIALS SHALL HAVE BACKFILL CAREFULLY PLACED AROUND BASE AND SIDES OF BALL TO TWO-THIRDS (2/3) DEPTH OF BALL, THEN THOROUGHLY SOAKED WITH WATER TO ALLOW SETTLEMENT. ALL WIRE, BURLAP FASTENERS AND LOOSE BURLAP AROUND BASE OF TRUNK SHALL BE REMOVED AT THIS TIME. REMAINDER OF PIT SHALL THEN BE BACKFILLED, ALLOWING FOR DEPTH OF MULCH, SAUCER AND SETTLEMENT OF BACKFILL. BACKFILL SHALL THEN BE THOROUGHLY WATERED AGAIN.
- LANDSCAPE CONTRACTOR TO REMOVE TREE STAKES, TREE WRAP, AND ALL DEAD WOOD ON TREES AND SHRUBS ONE YEAR AFTER PROVISIONAL ACCEPTANCE.
- ALL WORK ON TREES TO REMAIN, INCLUDING CROWN AND ROOT PRUNING SHALL BE PERFORMED BY A TREE SERVICE LICENSED FORESTER.
- THE CONTRACTOR SHALL PROVIDE ALL WATER, WATERING DEVICES AND LABOR NEEDED TO IRRIGATE PLANT MATERIALS UNTIL AUTOMATIC IRRIGATION SYSTEMS ARE OPERATIONAL AND ACCEPTED. THE CONTRACTOR SHALL SUPPLY ENOUGH WATER TO MAINTAIN THE PLANT'S HEALTHY CONDITION BASED ON SEASONAL CONSIDERATIONS.
- ALL PLANT MATERIALS SHALL BE PROTECTED FROM THE DRYING ACTION OF THE SUN AND WIND AFTER BEING DUG, WHILE BEING TRANSPORTED, AND WHILE AWAITING PLANTING. BALLS OF PLANTS THAT CANNOT BE PLANTED IMMEDIATELY SHALL BE PROTECTED FROM DRYING ACTION BY COVERING THEM WITH MOIST MULCH. PERIODICALLY, APPLY WATER TO MULCH-COVERED BALLS TO KEEP MOIST. IF PLANTING SHOULD OCCUR DURING GROWING SEASON, APPLY ANTI-DESICCANT TO LEAVES BEFORE TRANSPORT TO REDUCE LIKELIHOOD OF WINDBURN. REAPPLY ANTI-DESICCANT AFTER PLANTING TO REDUCE TRANSPIRATION.
- AFTER PLANTING IS COMPLETED, REPAIR INJURIES TO ALL PLANTS AS REQUIRED. LIMIT AMOUNT OF PRUNING TO A MINIMUM NECESSARY TO REMOVE DEAD OR INJURED TWIGS AND BRANCHES. PRUNE IN SUCH A MANNER AS NOT TO CHANGE NATURAL HABIT OR SHAPE OF PLANT. CENTRAL LEADERS SHALL NOT BE REMOVED.

SEED MIX SCHEDULE

MIX NAME	SUPPLIER	SPECIES	CONDITION	APPLICATION METHOD	APPLICATION RATE
EL PASO COUNTY CONSERVATION DISTRICT ALL-PURPOSE LOW GROW MIX		25% BUFFALOGRASS 20% BLUE GRAMA 29% SIDEOATS GRAMA 5% GREEN NEEDLEGRASS 20% WESTERN WHEATGRASS 1% DROPSEED	TEMPORARY IRRIGATION	DRILL OR BROADCAST WITH STRAW OR BLANKET PER NOTES	21 PLS/ACRE OR 42 PLS/ACRE

SEEDING NOTES

- CONTRACTOR IS RESPONSIBLE FOR MAINTAINING EXISTING EROSION CONTROL MEASURES DURING THE DURATION OF WORK ON-SITE.
- ALL AREAS TO BE SEEDED SHALL BE TILLED AS SPECIFIED AND THEN HARROWED, RAKED OR ROLLED TO PRODUCE A FIRM SEED BED FOR PLANTING. IMPORTED TOPSOIL MAY BE REQUIRED TO PROVIDE AN ACCEPTABLE PLANTING MEDIUM. LARGE ROCKS (1 INCH DIAMETER) AND DEBRIS THAT MAY IMPEDE SEEDING SHALL BE CLEARED FROM THE SITE. ANY REQUIRED EROSION CONTROL FEATURES (E.G., WATER BARS, BERMS, BASINS, TURNOUTS) SHALL BE CONSTRUCTED PRIOR TO SEEDING. SITES THAT ARE NOT ADEQUATELY PREPARED PRIOR TO SEEDING (E.G., COMPACTED SOIL, INSUFFICIENT TOPSOIL, ROCKY, ERODED SURFACE, ETC.) SHALL BE REJECTED.
- ALL SPECIFIED SEED MIXES SHALL CONSIST OF CERTIFIED SEED VARIETIES THAT ARE FREE OF NOXIOUS WEEDS AND HAVE BEEN TESTED FOR PURITY AND GERMINATION WITHIN SIX MONTHS OF THE PLANTING DATE. CERTIFICATION LABELS WHICH INDICATE THE SPECIES, PURITY, GERMINATION, WEED CONTENT, ORIGIN, AND TEST DATE SHALL BE SUBMITTED FOR ALL SEED MATERIALS.
- SEEDING SHALL OCCUR DEPENDING ON THE PROJECT SCHEDULE. IT IS PREFERABLE THAT SEEDING OCCUR DURING THE FALL (SEPTEMBER-NOVEMBER) OR SPRING (MARCH-MAY) TO MAXIMIZE PLANTING SUCCESS. IF THE PROJECT SCHEDULE DOES NOT COINCIDE WITH THE PREFERRED SEEDING PERIODS, OR IF THERE ARE UNSUITABLE SITE CONDITIONS (I.E. FROZEN GROUND), THEN SOIL STABILIZATION AND/OR STORM WATER BEST MANAGEMENT PRACTICES SHALL BE IMPLEMENTED TO STABILIZE THE AREA UNTIL THE NEXT APPROPRIATE SEEDING DATE. ANY SEEDING CONDUCTED OUTSIDE THE PREFERRED MONTHS SHALL BE APPROVED BY THE OWNER.
- SEEDING METHOD: DRILL SEEDING OR BROADCAST SEEDING SHALL BE USED. AS OUTLINED BELOW, THE SIZE AND SLOPE OF THE SEEDED AREA SHALL DETERMINE WHICH SEEDING METHOD(S) IS APPROPRIATE AND ACCEPTABLE. REFER TO MANUFACTURER'S SPECIFICATIONS FOR ADJUSTING SEEDING RATES FOR APPLICATIONS DIFFERING FROM THE SEED MIX TABLE.
 - SLOPES LESS THAN 3:1 - SEED SHALL BE PLANTED USING A RANGELAND DRILL. SEEDING SHALL BE ACCOMPLISHED USING BI-DIRECTIONAL DRILLING AND FOLLOWING THE SLOPE CONTOUR. THE DRILL EQUIPMENT SHALL BE CALIBRATED EACH DAY OR WHENEVER THERE IS A CHANGE IN THE SEED MIX TO ENSURE PROPER SEED DISTRIBUTION AND RATE.
 - SLOPES GREATER THAN 3:1 OR AREAS LESS THAN 0.10 ACRE - SEED SHALL BE BROADCAST BY HAND OR MECHANICAL SPREADER. BROADCAST SEEDED AREAS SHALL BE RAKED OR HARROWED TO INCORPORATE THE SEED INTO THE SOIL AT A DEPTH NOT EXCEEDING 0.75 INCHES.
 - BROADCAST SEEDING SHALL BE AVOIDED WHEN WIND SPEED EXCEEDS 15 MILES PER HOUR.
 - ALTERNATIVE METHODS TO BE REVIEWED AND APPROVED BY OWNER OR LANDSCAPE ARCHITECT.
- FINE GRADE SEED TO ELIMINATE IRREGULARITIES ON THE SURFACE. ROLL OR PERFORM ADDITIONAL FINE GRADING. SEED AREAS BY MEANS OF APPROVED BROADCAST OR HYDRAULIC-TYPE SPREADERS. DO NOT SEED DURING WINDY WEATHER.
- WEED-FREE NATIVE HAY, WEED-FREE STRAW, OR VIRGIN WOOD FIBER HYDRO-MULCH SHALL BE USED PER NOTES BELOW TO CONTROL EROSION AND PROMOTE SEED GERMINATION AND PLANT ESTABLISHMENT. NATIVE HAY, STRAW, OR HYDRO-MULCH SHALL BE APPLIED PER SEED SUPPLIER'S RECOMMENDATIONS FOR OPTIMAL GROWTH PER SEED MIX TYPE AND SLOPE.
 - HYDRO-MULCHING: ALL IRRIGATED SEEDING SHALL BE HYDRO MULCHED. ORGANIC TACKIFIER SHALL BE USED. MULCH SEEDED AREAS WITHIN 24 HOURS OF SEEDING. HYDRO-MULCH SHALL BE APPLIED USING A COLOR DYE AND THE MANUFACTURER'S RECOMMENDED RATE OF AN ORGANIC TACKIFIER.
 - STRAW CRIMPING: ALL NON-IRRIGATED OR TEMPORARILY IRRIGATED TO BE NATIVE HAY OR STRAW CRIMPED INTO THE SOIL TO A DEPTH OF AT LEAST 3 INCHES, AND SHALL PROTRUDE ABOVE THE GROUND AT LEAST 3 INCHES.
 - ALTERNATIVE METHODS TO BE REVIEWED AND APPROVED BY OWNER OR LANDSCAPE ARCHITECT.
 - EROSION CONTROL BLANKETS ARE TO BE APPLIED ON SLOPES 3:1 AND GREATER.
- IF A WATER HOOK-UP IS AVAILABLE A SPRINKLER SYSTEM MAY BE USED TO PROMOTE RAPID PLANT ESTABLISHMENT. GENERALLY, WATERING AT 0.75-1.0 INCHES/WEEK IS RECOMMENDED DURING THE APRIL-OCTOBER GROWING SEASON DEPENDING ON NATURAL RAINFALL. THE USE OF WATER TRUCKS FOR IRRIGATION IS PROHIBITED DUE TO TRAFFIC IMPACTS ON THE SEEDED AREAS AND TYPICAL POOR WATER DISTRIBUTION OBSERVED WITH THIS TYPE OF WATERING.
- APPROVAL OF SEEDED TURF AREAS SHALL BE BASED UPON THE SEED PRODUCERS GUARANTEED SEEDING GERMINATION RATE FOR A ONE SQUARE FOOT AREA. IF GUARANTEED GERMINATION RATE IS NOT ACHIEVED, THE CONTRACTOR SHALL OVERSEE UNTIL THE GERMINATION RATE IS ACHIEVED. REVEGETATION SHALL HAVE AT LEAST 3 NATIVE GRASS SEEDLINGS/SQUARE FOOT AND NO BARE AREAS EXCEEDING ONE SQUARE METER AFTER THE SECOND GROWING SEASON. FOR DRILL SEEDED AREAS, PLANTING ROWS SHALL BE NOTICEABLE BY THE END OF THE FIRST FULL GROWING SEASON. IF A PARTIAL OR TOTAL SEEDING FAILURE IS APPARENT AFTER THE SECOND GROWING SEASON, POORLY VEGETATED AREAS SHALL BE RESEEDED IN THE SAME MANNER DESCRIBED ABOVE. APPROPRIATE SITE PREPARATION PRACTICES SHALL BE USED TO CREATE A SUITABLE SEEDBED FOR PLANTING, BUT ANY ESTABLISHED NATIVE VEGETATION SHALL BE UNDISTURBED TO THE EXTENT POSSIBLE. AREAS THAT ERODE BEFORE GERMINATION AND ESTABLISHMENT CAN OCCUR SHALL BE REPAIRED AND IMMEDIATELY RESEEDED DURING THE SAME SEASON.
- ALL BARE AREAS TO BE RESEEDED WITH PROPER REMOVAL OF WEEDS. ALL NATIVE SEED AREAS ARE TO MEET STANDARD LOCAL JURISDICTION REQUIREMENTS FOR GERMINATION AND ESTABLISHMENT.

PLANT SCHEDULE

SYMBOL	QTY	BOTANICAL / COMMON NAME	PLANT SIZE	CONTAINER	MAT. H.	MAT. W.
DECIDUOUS TREES						
	104	ACER GINNALA AMUR MAPLE	1.5" CAL.	B&B	20'	15'
	73	ROBINIA NEOMEXICANA NEW MEXICO LOCUST	1.5" CAL.	B&B	15'	15'
	4	TILIA TOMENTOSA SILVER LINDEN	2" CAL.	B&B	50'	40'
EVERGREEN TREES *						
	42	PINUS EDULIS PINON PINE	6' HT.	B&B	25'	15'
	58	PINUS NIGRA AUSTRIAN BLACK PINE	6' HT.	B&B	50'	35'
	19	PINUS PONDEROSA PONDEROSA PINE	6' HT.	B&B	60'	35'
ORNAMENTAL TREES						
	50	KOELREUTERIA PANICULATA GOLDEN RAIN TREE	1.5" CAL.	B&B	25'	25'

* SALVAGED / RELOCATED PONDEROSA PINES FROM SITE ACCEPTABLE ALTERNATIVE FOR EVERGREEN TREES. CONTRACTOR TO ENSURE COUNTY MINIMUMS FOR STREET TREES ARE MET.

LEGEND

- EXISTING TREE TO REMAIN
- 3/4" ROCK
- 1 1/2" ROCK
- NATIVE SEED-LOW
- 2-4" COBBLE

2024-08-27 16:11

CONSULTANTS:

PLANNER/ LANDSCAPE ARCHITECT/ CIVIL ENGINEER:



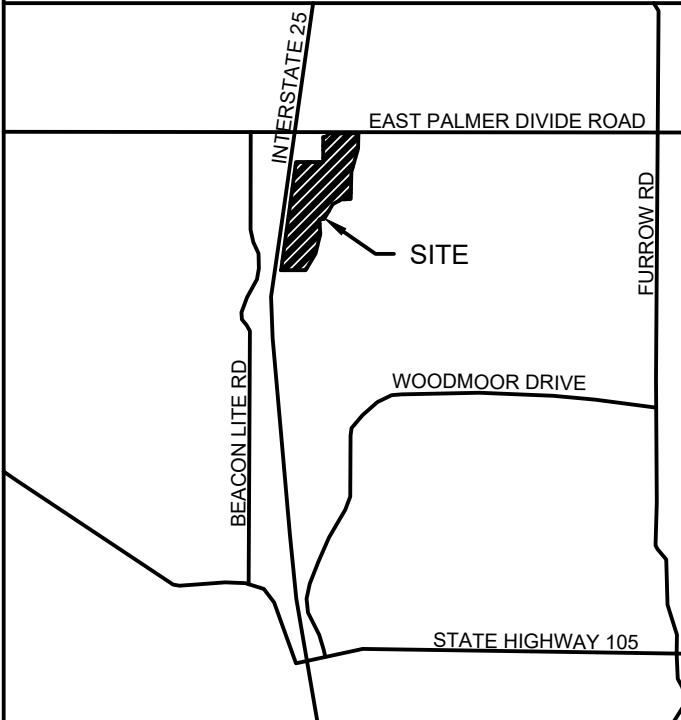
2435 RESEARCH PARKWAY, SUITE 300
COLORADO SPRINGS, CO 80920
PHONE: (719) 575-0100
FAX : (719) 575-0208

OWNER/DEVELOPER:

MONUMENT RIDGE EAST, LLC
5055 LIST DRIVE
COLORADO SPRINGS, CO 80919

APPROVAL:

VICINITY MAP:



PROJECT:

**MONUMENT RIDGE EAST
PRELIMINARY LANDSCAPE PLAN**

EL PASO COUNTY, CO
AUGUST 27, 2024

REVISION HISTORY:

NO.	DATE	DESCRIPTION	BY

DRAWING INFORMATION:

PROJECT NO: 24.1669.001

DRAWN BY: AV

CHECKED BY: AP

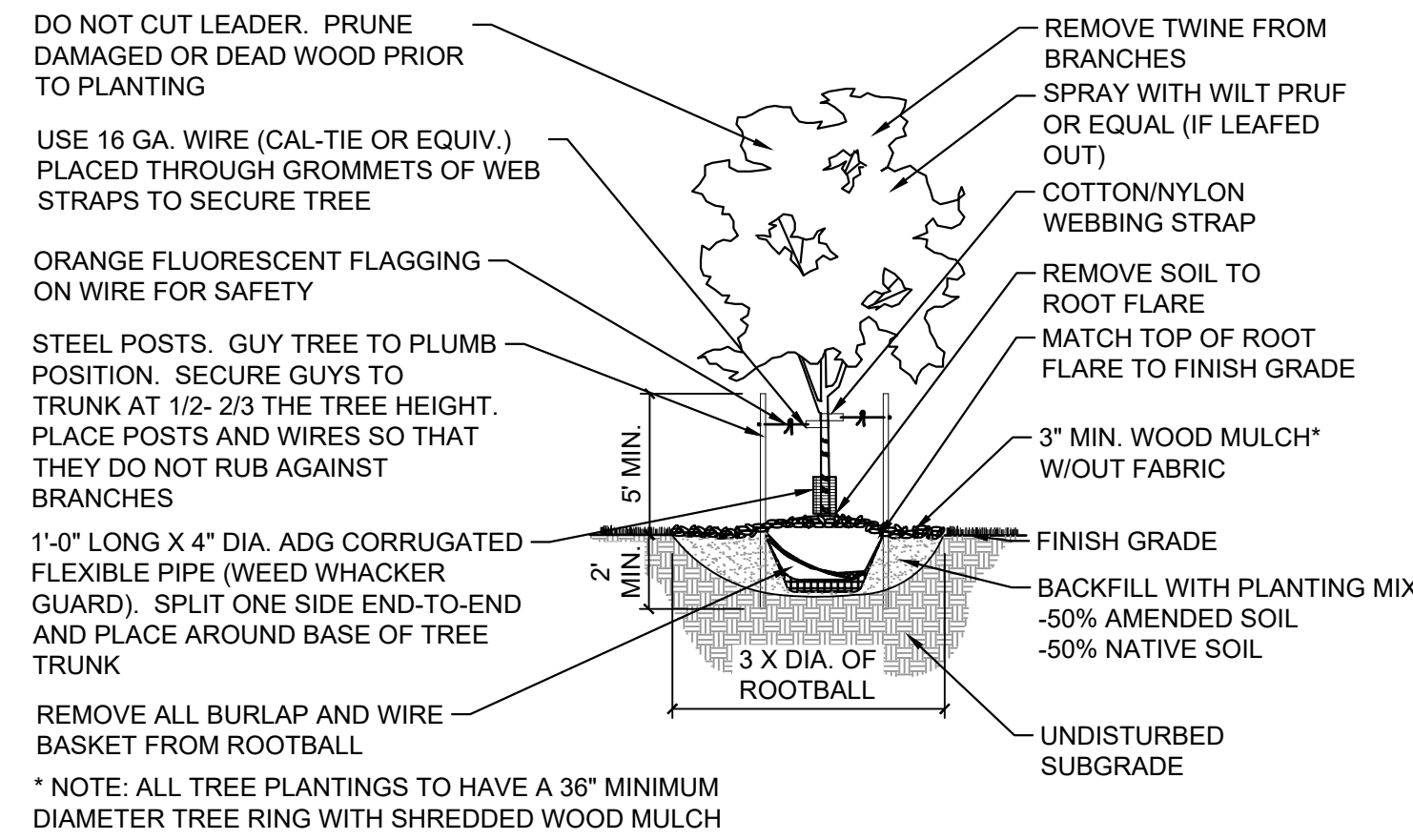
APPROVED BY: AP

SHEET TITLE:

**LANDSCAPE
NOTES**

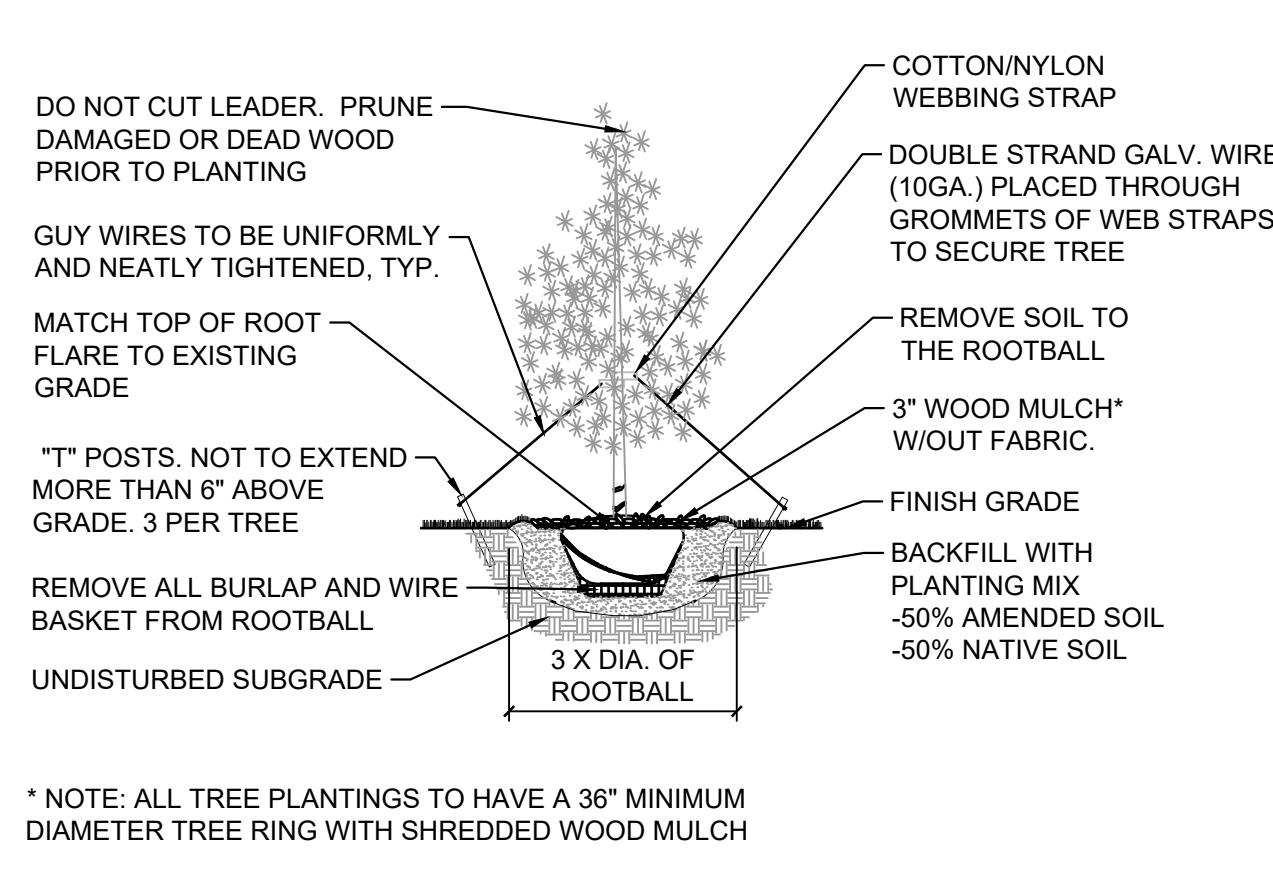
LD01

SHEET 2 OF 8



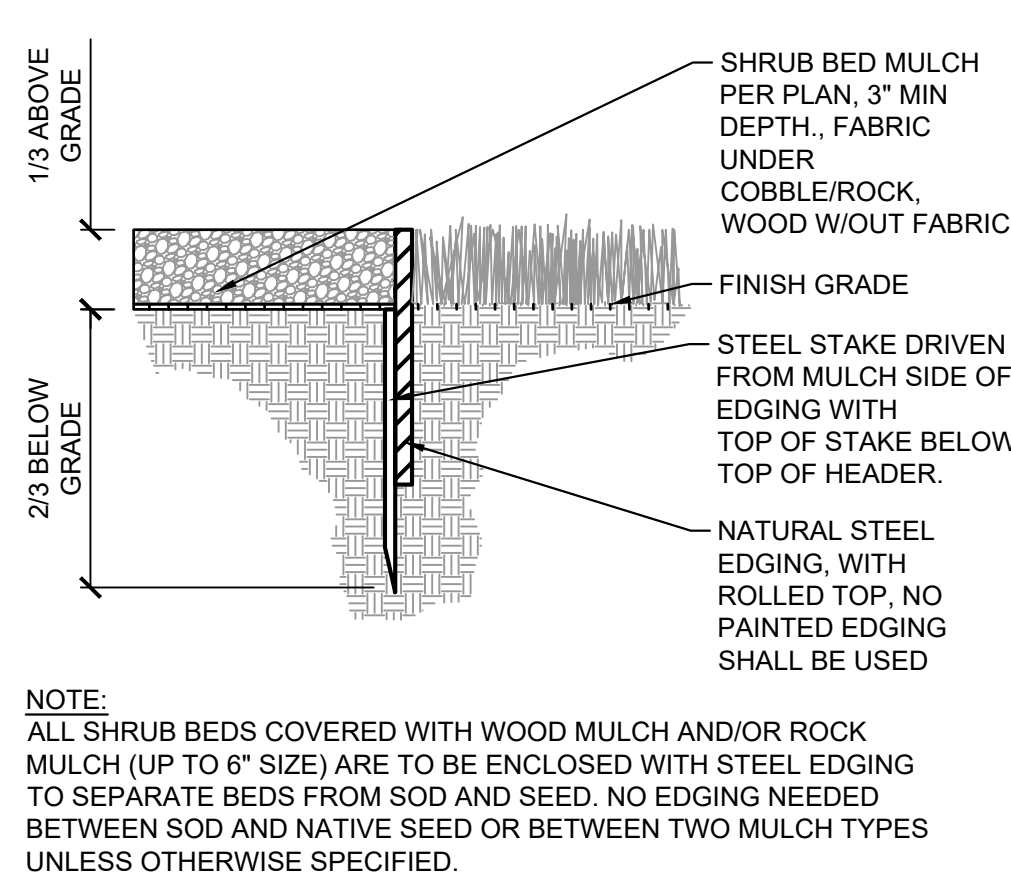
1 DECIDUOUS TREE

NTS MS-STD-LS-01



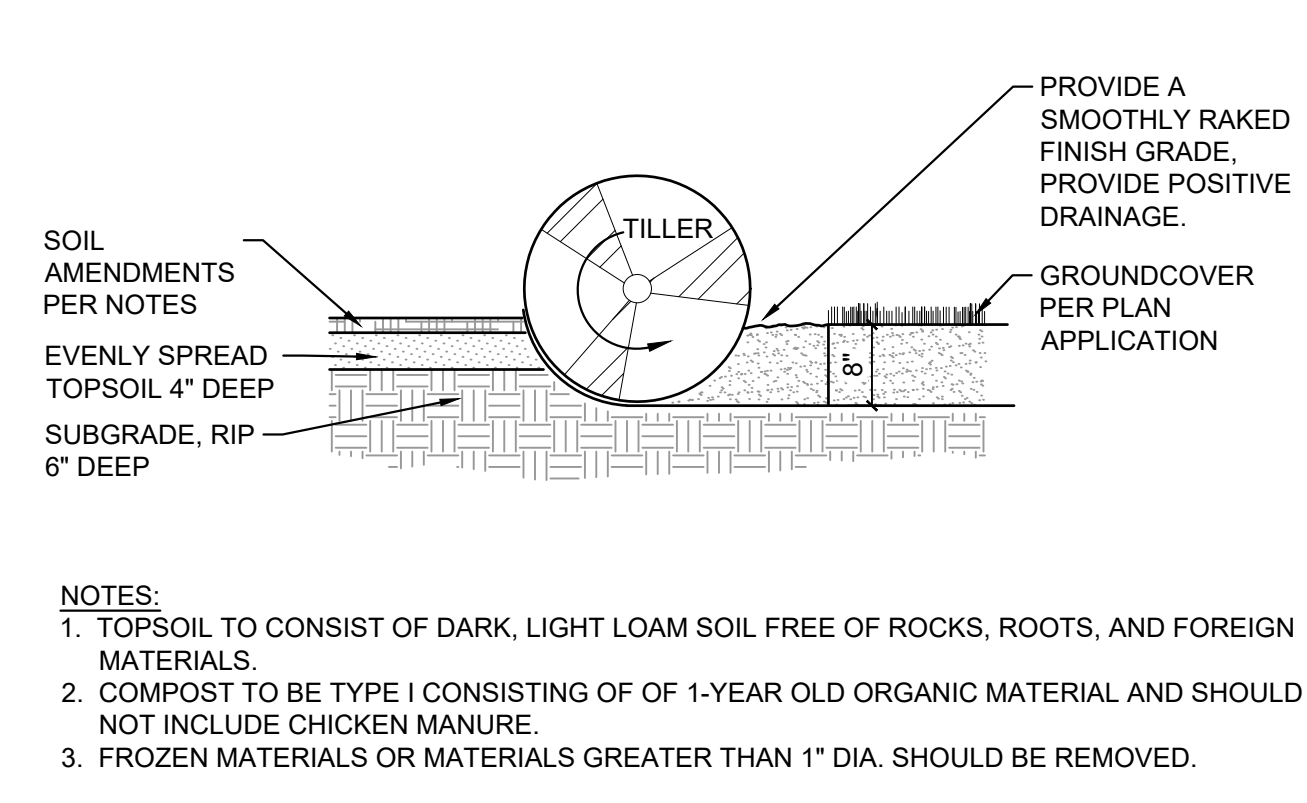
2 EVERGREEN TREE

NTS MS-STD-LS-02



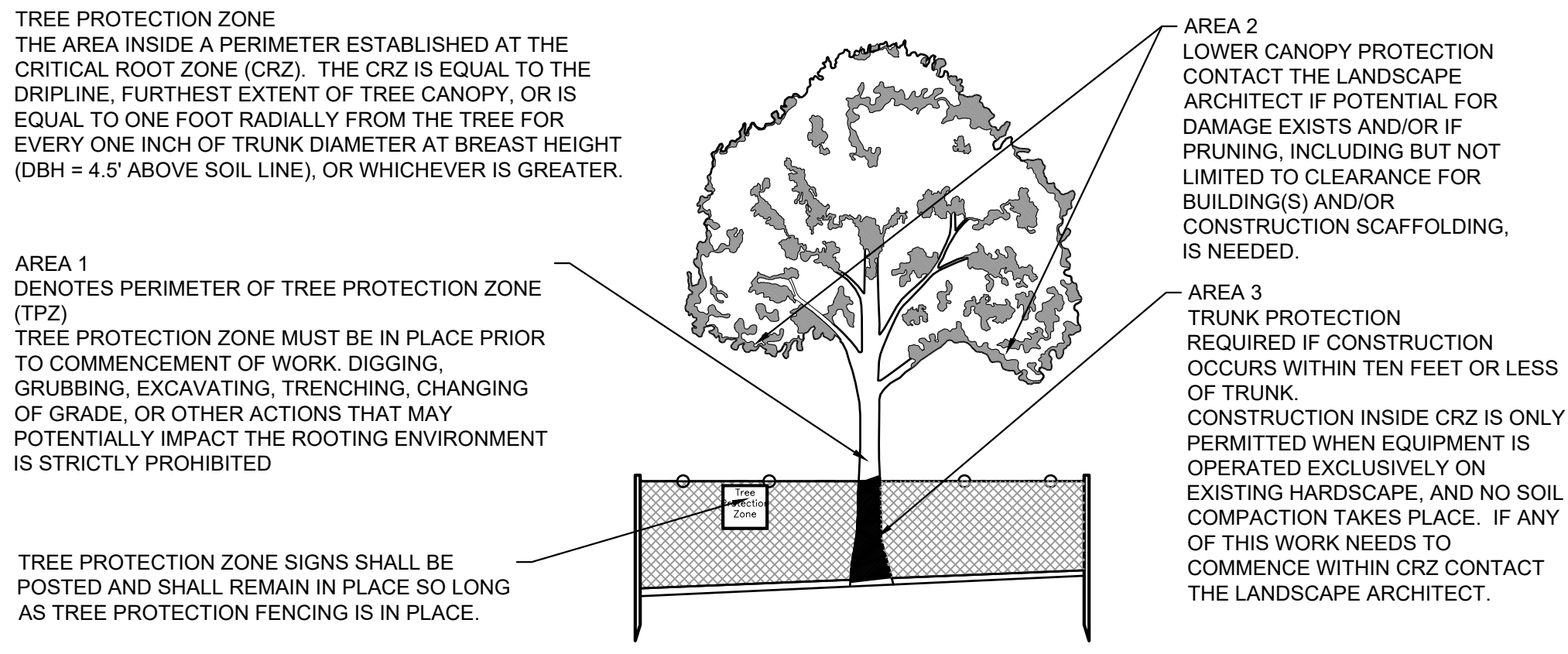
3 STEEL EDGING

NTS MS-STD-LS-12



4 SOIL PREP FOR ALL AREAS

NTS MS-STD-LS-05



5 EXISTING TREE PROTECTION

NTS MS-STD-LS-11

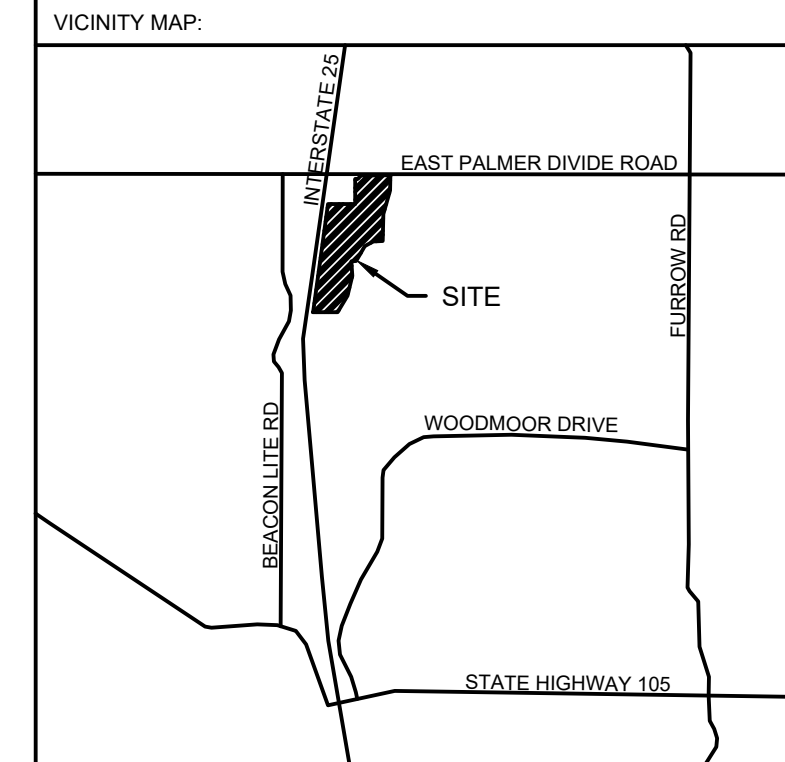
- NOTES:**
- TREE PROTECTION SHALL BE INSTALLED PRIOR TO COMMENCEMENT OF DEMOLITION/CONSTRUCTION ACTIVITIES, APPROVED BY LANDSCAPE ARCHITECT, AND SHALL REMAIN IN PLACE UNTIL AFTER CONSTRUCTION. ONCE APPROVED, THE TREE PROTECTION ZONE SHALL NOT BE RESIZED, MODIFIED, REMOVED, OR ALTERED IN ANY MANNER WITHOUT NOTIFYING THE LANDSCAPE ARCHITECT.
 - NO MATERIALS, DEBRIS, EQUIPMENT, OR SITE AMENITIES SHALL BE STORED WITHIN THE TREE PROTECTION ZONE.
 - WHILE TREE PROTECTION FENCING IS IN PLACE, TREES SHALL BE DEEP-ROOT WATERED AT AN INTERVAL OF ONCE PER WEEK WHEN TEMPERATURES ARE AT OR ABOVE 50-DEGREES F. TREES SHALL BE WATERED AT THE RATE OF 10 GALLONS PER INCH CALIPER.
 - MINIMUM TREE PROTECTION ZONE, AREA 1 FENCING SHALL BE "ORANGE PLASTIC SAFETY FENCING," MIN. 48" IN HEIGHT, TOP SECURED TO METAL T-POSTS WITH 12-GAUGE WIRE WOVEN THROUGH TOP OF FENCING FOR ENTIRE LENGTH.
 - HEAVY DUTY T-POSTS SHALL BE PLACED SO THAT WIRE & FENCE ARE TAUT.
 - CHAIN LINK FENCING MAY BE ALLOWED WHERE HEAVY CONSTRUCTION ACTIVITY IS ADJACENT TO EXISTING TREES.
 - "TREE PROTECTION ZONE" SIGNS SHALL REMAIN IN PLACE DURING THE ENTIRE COMMENCEMENT OF CONSTRUCTION.

CONSULTANTS:
 PLANNER/ LANDSCAPE ARCHITECT/ CIVIL ENGINEER:

 2435 RESEARCH PARKWAY, SUITE 300
 COLORADO SPRINGS, CO 80920
 PHONE: (719) 575-0100
 FAX: (719) 575-0208

OWNER/DEVELOPER:
MONUMENT RIDGE EAST, LLC
 5055 LIST DRIVE
 COLORADO SPRINGS, CO 80919

APPROVAL:



PROJECT:
**MONUMENT RIDGE EAST
 PRELIMINARY LANDSCAPE PLAN**

EL PASO COUNTY, CO
 AUGUST 27, 2024

REVISION HISTORY:

NO.	DATE	DESCRIPTION	BY

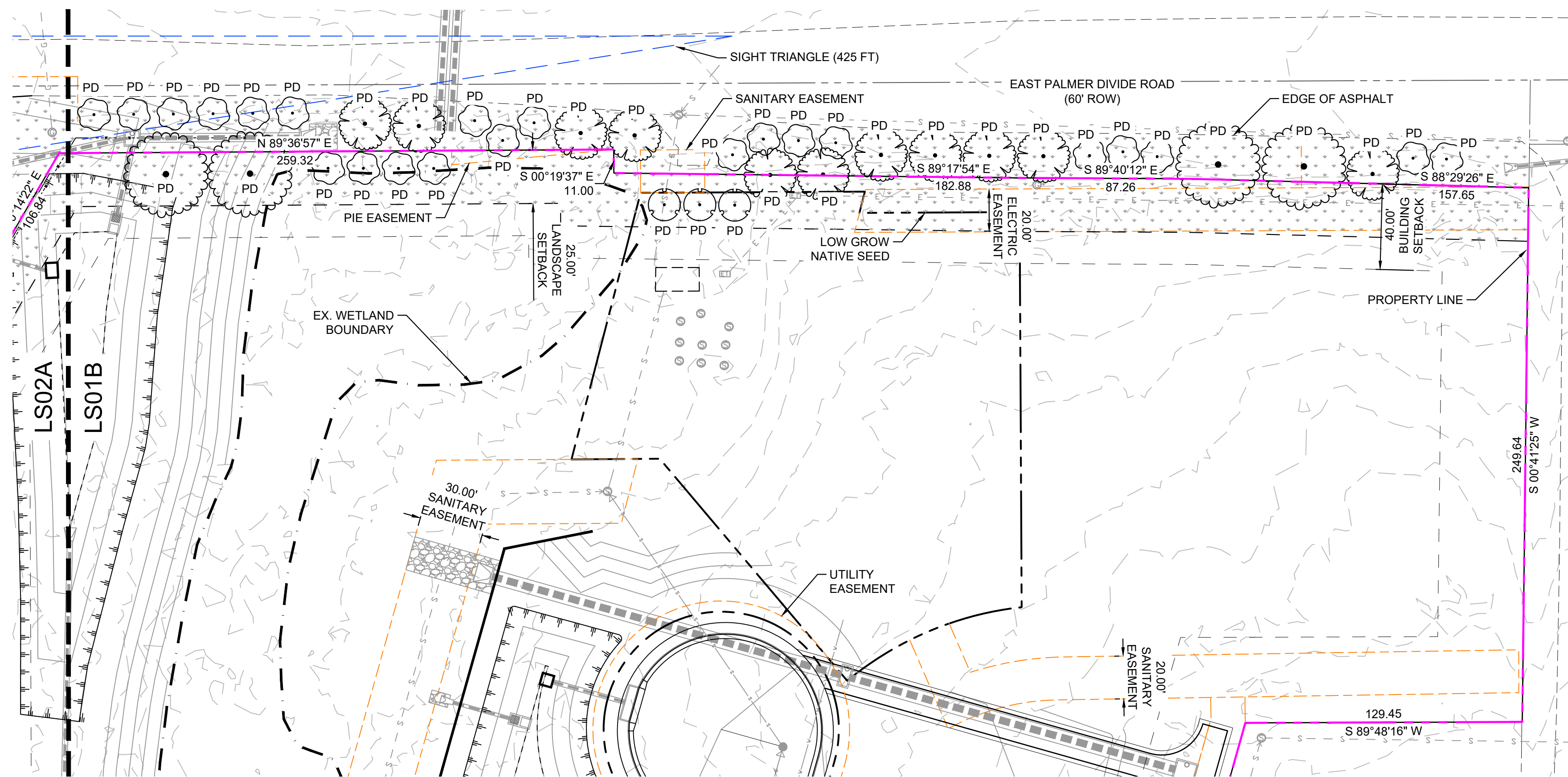
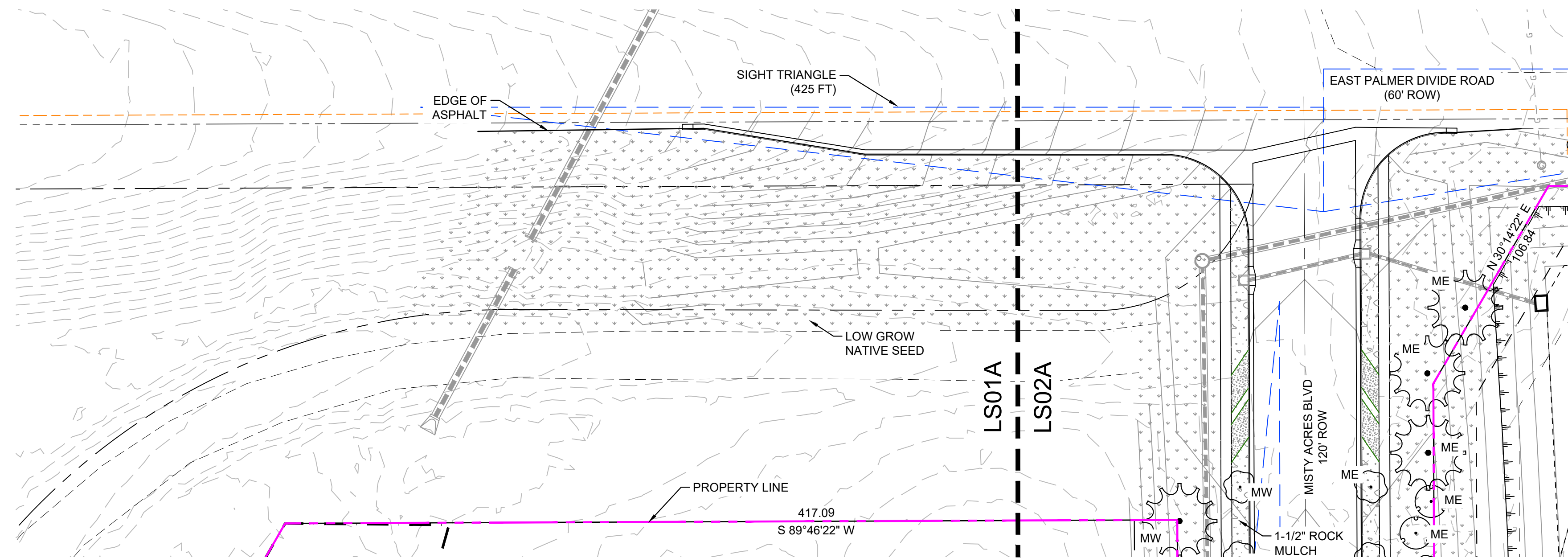
DRAWING INFORMATION:
 PROJECT NO: 24.1669.001
 DRAWN BY: AV
 CHECKED BY: AP
 APPROVED BY: AP

**LANDSCAPE
 DETAILS**

LD02
 SHEET 3 OF 8

FILE LOCATION: S:\24.1669.001 MONUMENT RIDGE EAST\500 CAD\241669.001 PLAN SET\DEVELOPMENT PLAN\LD01.DWG

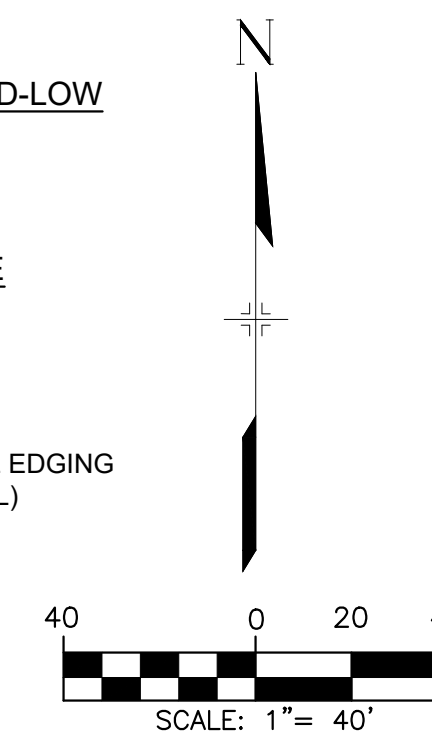
FILE LOCATION: S:\24-1669-001 MONUMENT RIDGE EAST\1500 CAD\1504 PLAN SET\DEVELOPMENT PLAN\LS01.DWG



LEGEND

- EXISTING TREE TO REMAIN
- 3/4" ROCK
- 1 1/2" ROCK
- NATIVE SEED-LOW
- 2-4" COBBLE
- EDGING
4" ROLLED TOP STEEL EDGING
(OR APPROVED EQUAL)

2024-08-23 10:36

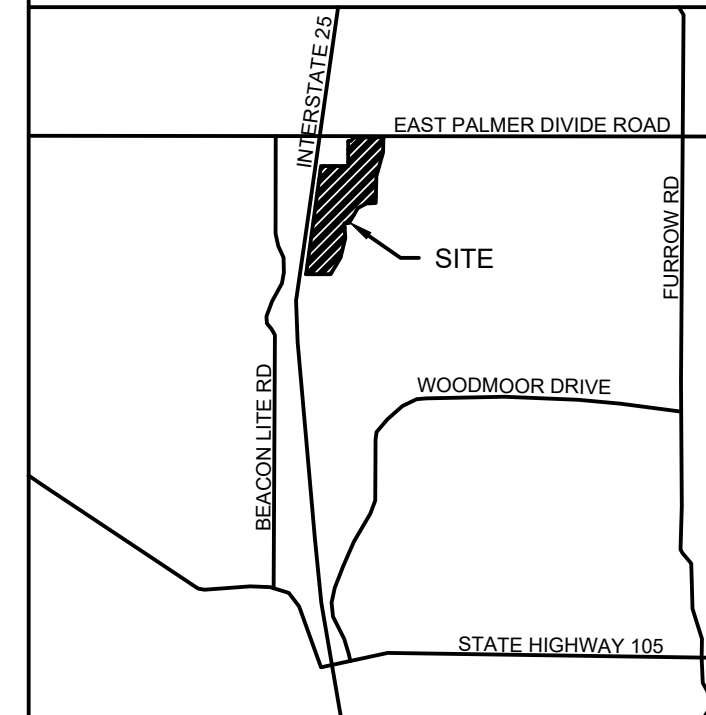


CONSULTANTS:
PLANNER/ LANDSCAPE ARCHITECT/ CIVIL ENGINEER:
Matrix
2435 RESEARCH PARKWAY, SUITE 300
COLORADO SPRINGS, CO 80920
PHONE: (719) 575-0100
FAX: (719) 575-0208

OWNER/DEVELOPER:
MONUMENT RIDGE EAST, LLC
5055 LIST DRIVE
COLORADO SPRINGS, CO 80919

APPROVAL:

VICINITY MAP:



PROJECT:
**MONUMENT RIDGE EAST
PRELIMINARY LANDSCAPE PLAN**

EL PASO COUNTY, CO
AUGUST 27, 2024

REVISION HISTORY:

NO.	DATE	DESCRIPTION	BY

DRAWING INFORMATION:

PROJECT NO: 24.1669.001
DRAWN BY: AV
CHECKED BY: AP
APPROVED BY: AP

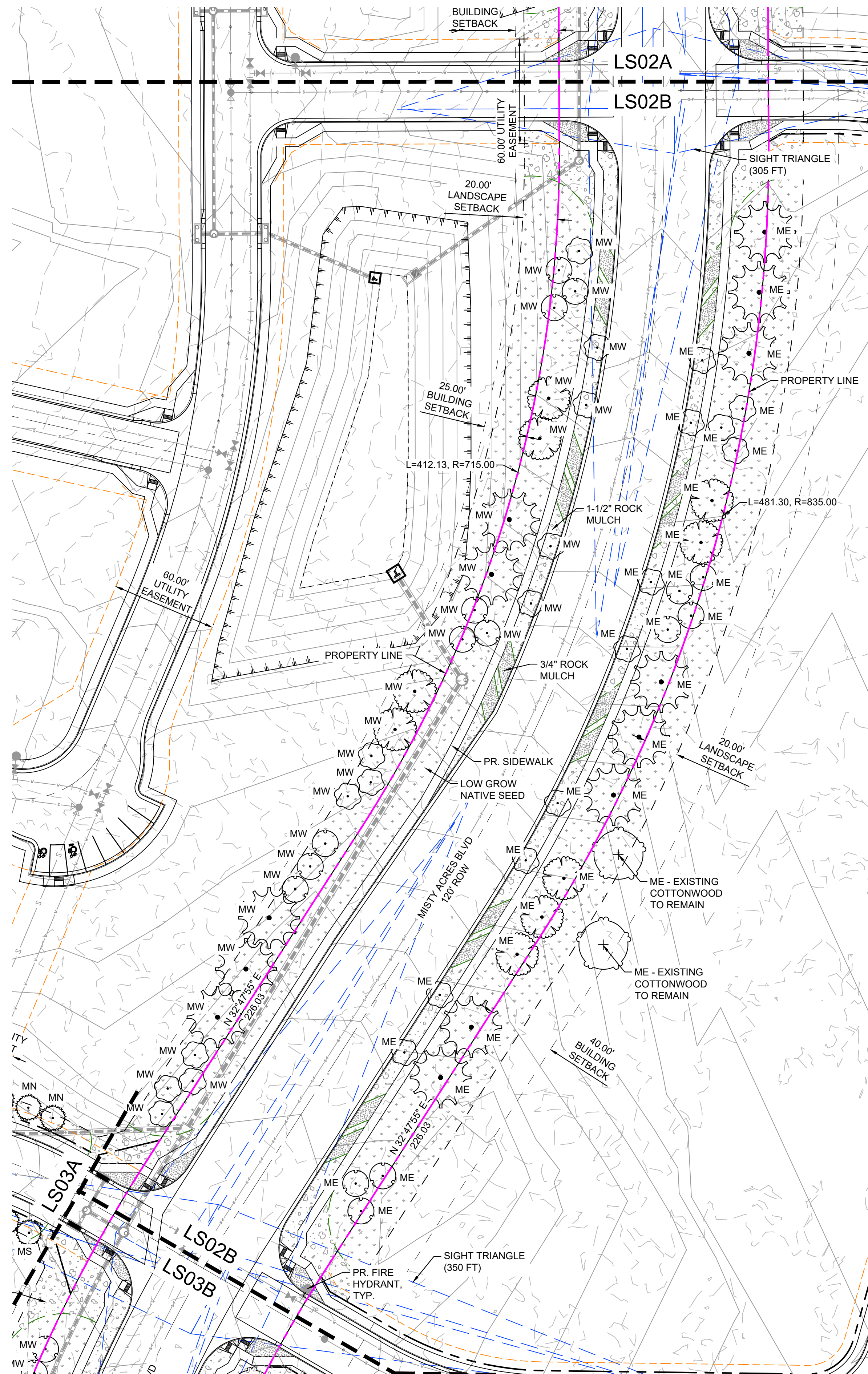
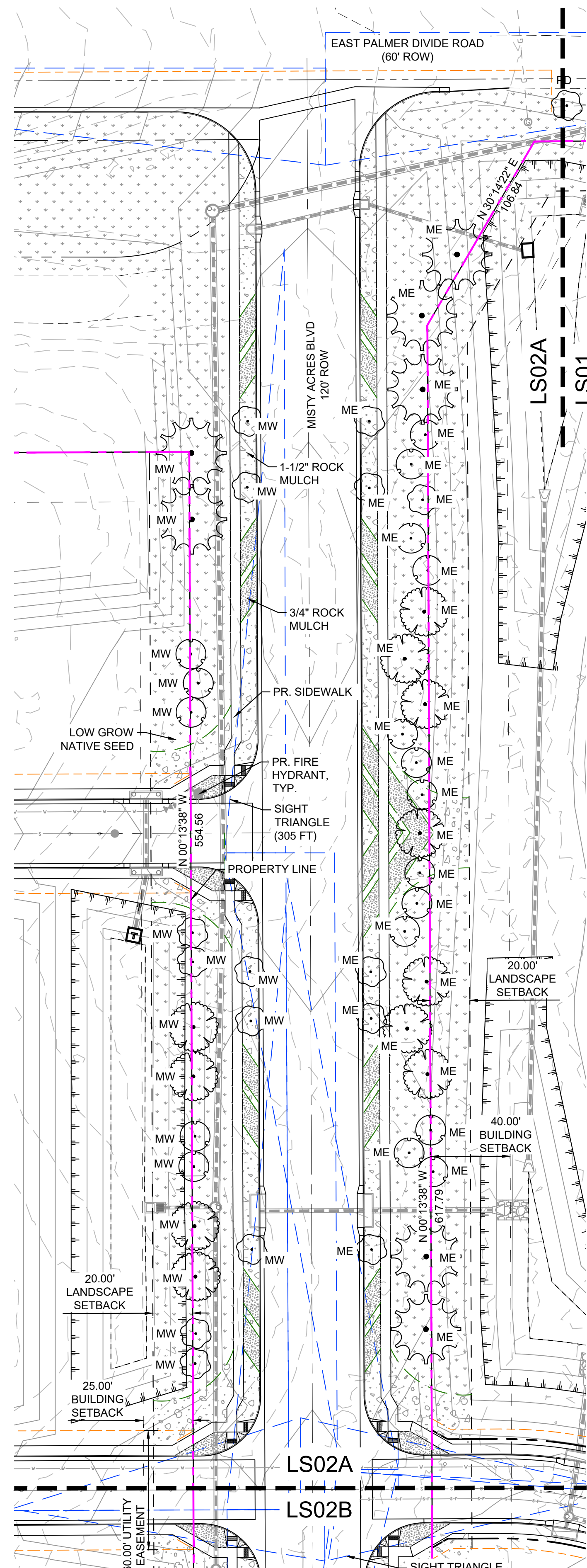
SHEET TITLE:

**PRELIMINARY
LANDSCAPE PLAN**

LS01

SHEET 4 OF 8

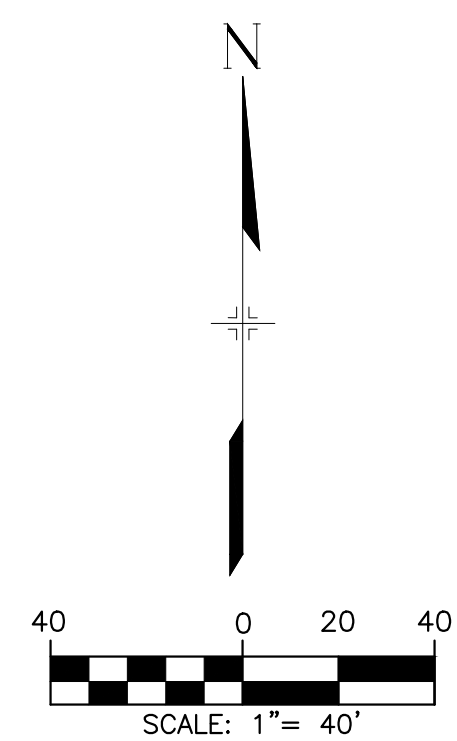
FILE LOCATION: S:\24-1669-001 MONUMENT RIDGE EAST\500 CAD\504 PLAN SET\DEVELOPMENT PLAN\LS01.DWG



LEGEND

- EXISTING TREE TO REMAIN
- 3/4" ROCK
- 1 1/2" ROCK
- NATIVE SEED-LOW
- 2-4" COBBLE
- EDGING
4" ROLLED TOP STEEL EDGING
(OR APPROVED EQUAL)

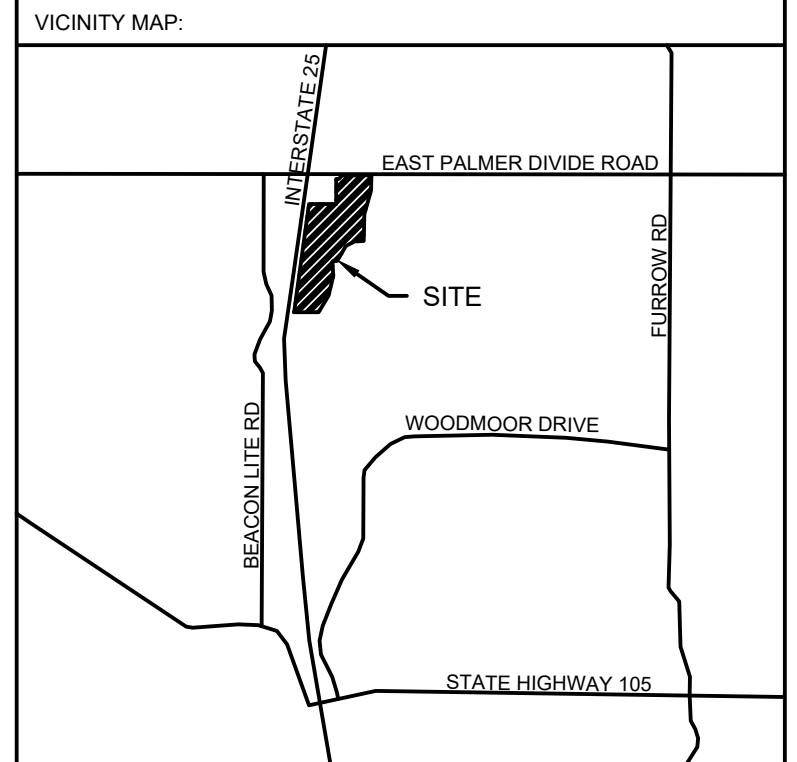
2024-08-23 10:36



CONSULTANTS:
 PLANNER/ LANDSCAPE ARCHITECT/ CIVIL ENGINEER:
Matrix
 2435 RESEARCH PARKWAY, SUITE 300
 COLORADO SPRINGS, CO 80920
 PHONE: (719) 575-0100
 FAX: (719) 575-0208

OWNER/DEVELOPER:
MONUMENT RIDGE EAST, LLC
 5055 LIST DRIVE
 COLORADO SPRINGS, CO 80919

APPROVAL:



PROJECT:
**MONUMENT RIDGE EAST
 PRELIMINARY LANDSCAPE PLAN**
 EL PASO COUNTY, CO
 AUGUST 27, 2024

REVISION HISTORY:

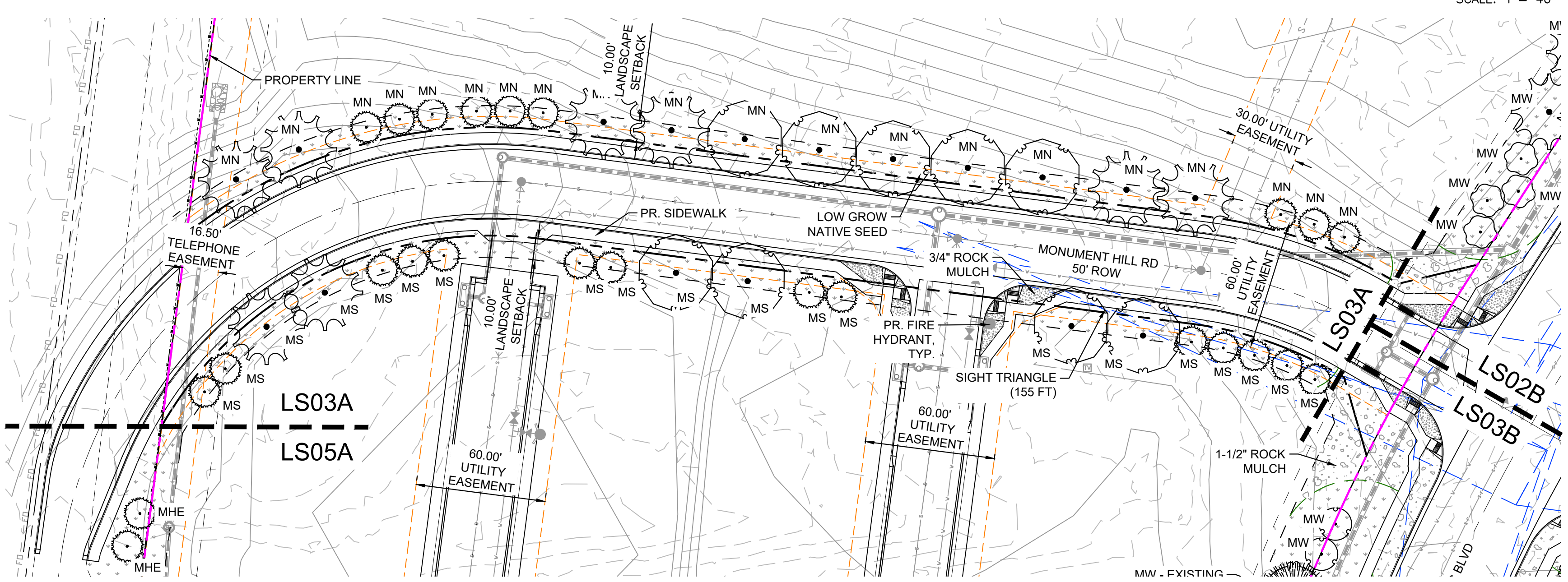
NO.	DATE	DESCRIPTION	BY

DRAWING INFORMATION:
 PROJECT NO: 24.1669.001
 DRAWN BY: AV
 CHECKED BY: AP
 APPROVED BY: AP

**PRELIMINARY
 LANDSCAPE PLAN**

LS02
 SHEET 5 OF 8

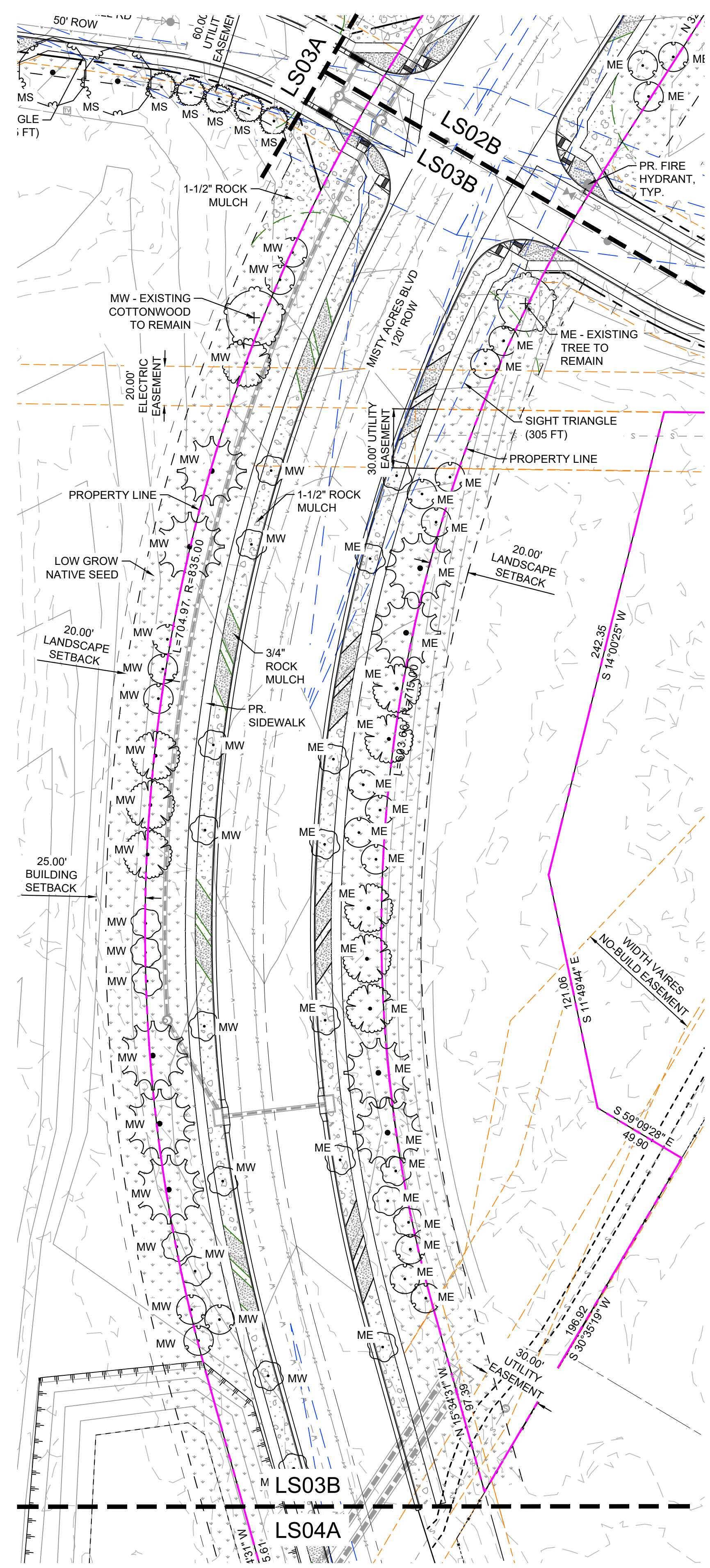
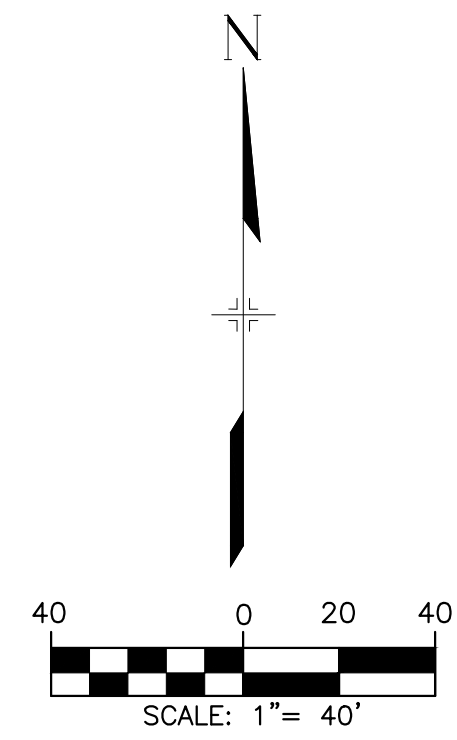
FILE LOCATION: S:\24-1669-001 MONUMENT RIDGE EAST\500 CAD\504 PLAN SET\DEVELOPMENT PLAN\501.DWG



2024-08-23 10:36

LEGEND

- EXISTING TREE TO REMAIN
- 3/4" ROCK
- 1 1/2" ROCK
- NATIVE SEED-LOW
- 2-4" COBBLE
- EDGING
4" ROLLED TOP STEEL EDGING
(OR APPROVED EQUAL)



CONSULTANTS:
 PLANNER/ LANDSCAPE ARCHITECT/ CIVIL ENGINEER:
Matrix
 2435 RESEARCH PARKWAY, SUITE 300
 COLORADO SPRINGS, CO 80920
 PHONE: (719) 575-0100
 FAX: (719) 575-0208

OWNER/DEVELOPER:
MONUMENT RIDGE EAST, LLC
 5055 LIST DRIVE
 COLORADO SPRINGS, CO 80919

APPROVAL:

VICINITY MAP:

PROJECT:
**MONUMENT RIDGE EAST
 PRELIMINARY LANDSCAPE PLAN**
 EL PASO COUNTY, CO
 AUGUST 27, 2024

REVISION HISTORY:

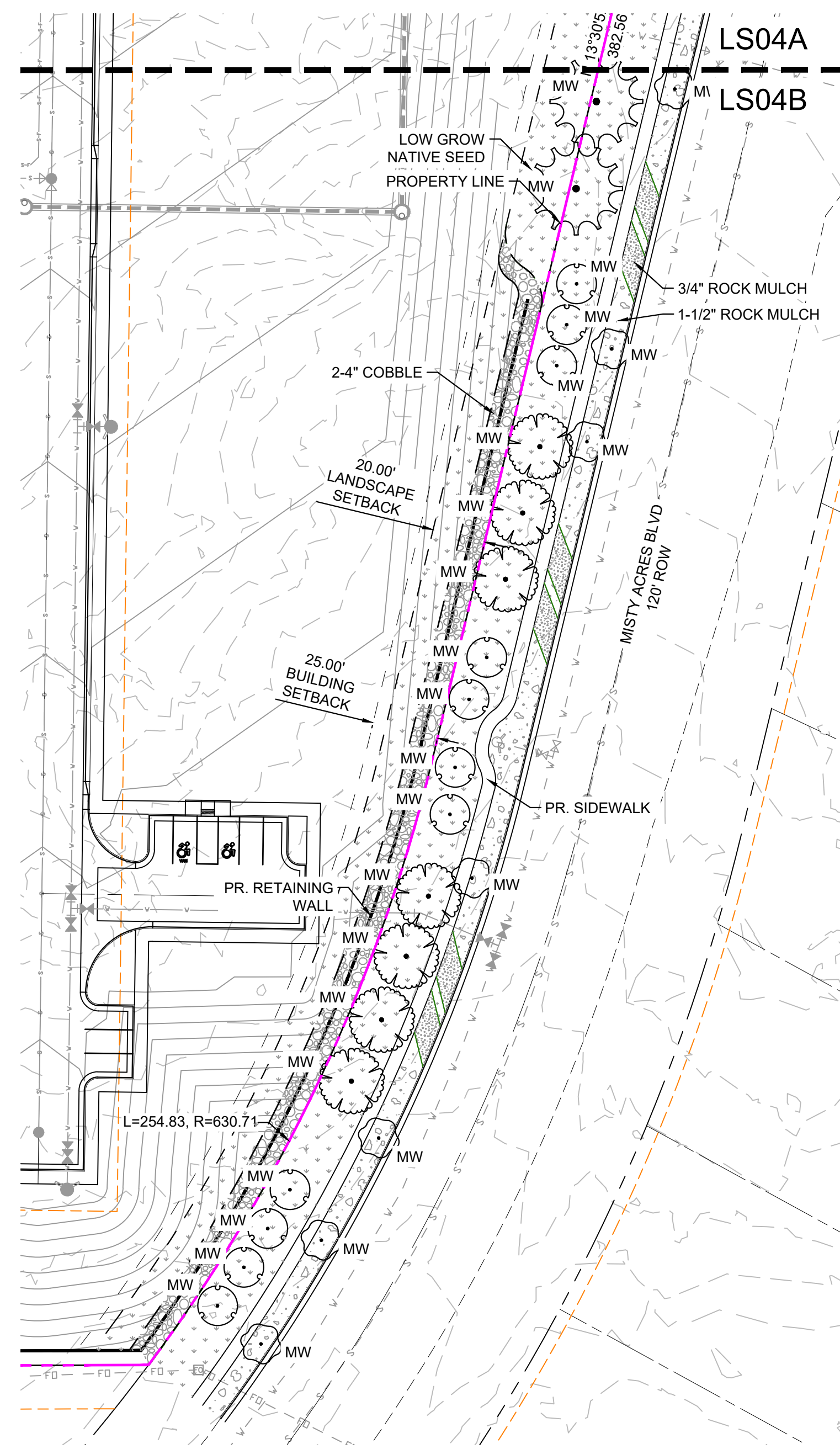
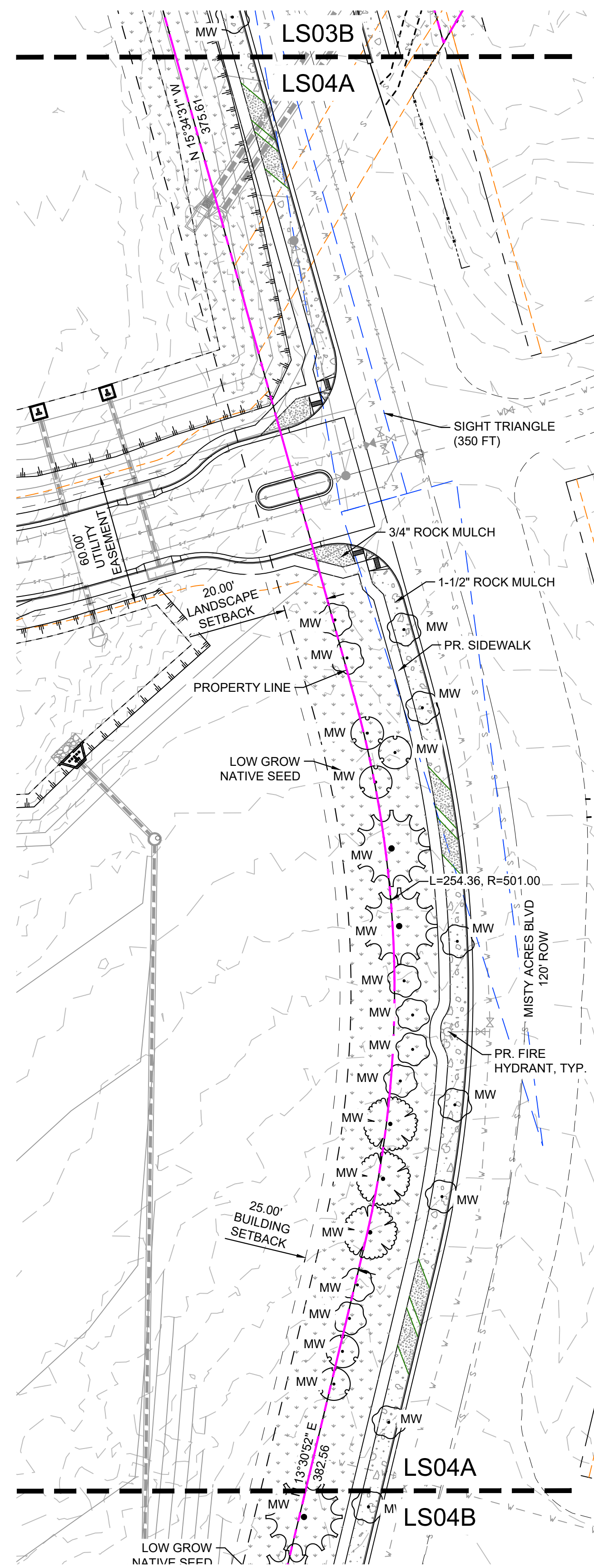
NO.	DATE	DESCRIPTION	BY

DRAWING INFORMATION:
 PROJECT NO: 24.1669.001
 DRAWN BY: AV
 CHECKED BY: AP
 APPROVED BY: AP

SHEET TITLE:
**PRELIMINARY
 LANDSCAPE PLAN**

LS03
 SHEET 6 OF 8

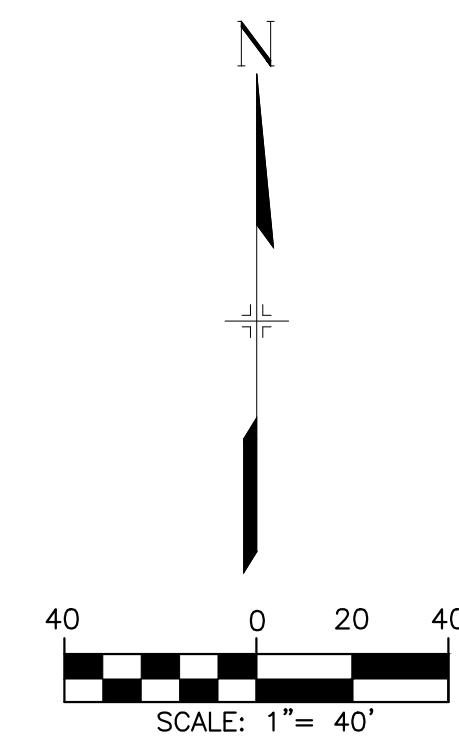
FILE LOCATION: S:\24-1669-001 MONUMENT RIDGE EAST\1500 CAD\1504 PLAN SET\DEVELOPMENT PLAN\LS04.DWG



LEGEND

- EXISTING TREE TO REMAIN
- 3/4" ROCK
- 1 1/2" ROCK
- NATIVE SEED-LOW
- 2-4" COBBLE
- EDGING
4" ROLLED TOP STEEL EDGING
(OR APPROVED EQUAL)

2024-08-23 10:36

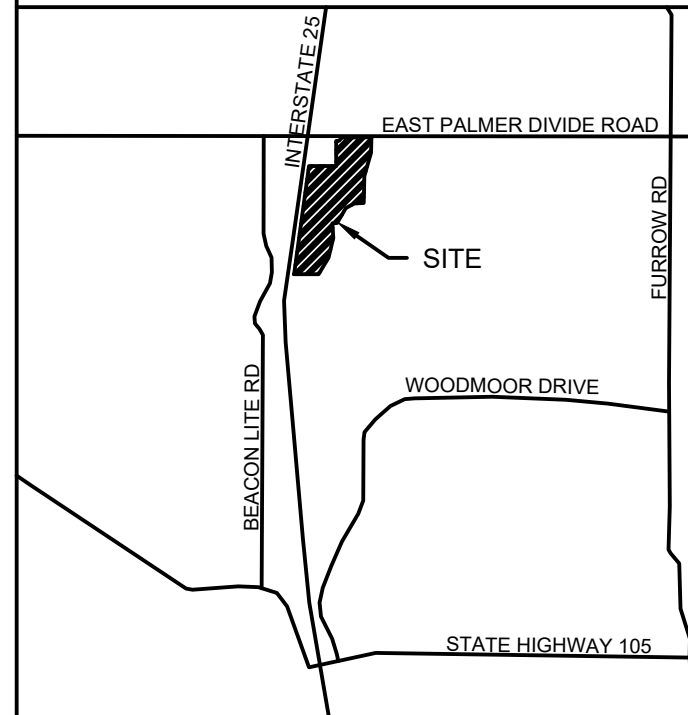


CONSULTANTS:
PLANNER/ LANDSCAPE ARCHITECT/ CIVIL ENGINEER:
Matrix
2435 RESEARCH PARKWAY, SUITE 300
COLORADO SPRINGS, CO 80920
PHONE: (719) 575-0100
FAX: (719) 575-0208

OWNER/DEVELOPER:
MONUMENT RIDGE EAST, LLC
5055 LIST DRIVE
COLORADO SPRINGS, CO 80919

APPROVAL:

VICINITY MAP:



PROJECT:
**MONUMENT RIDGE EAST
PRELIMINARY LANDSCAPE PLAN**
EL PASO COUNTY, CO
AUGUST 27, 2024

REVISION HISTORY:

NO.	DATE	DESCRIPTION	BY

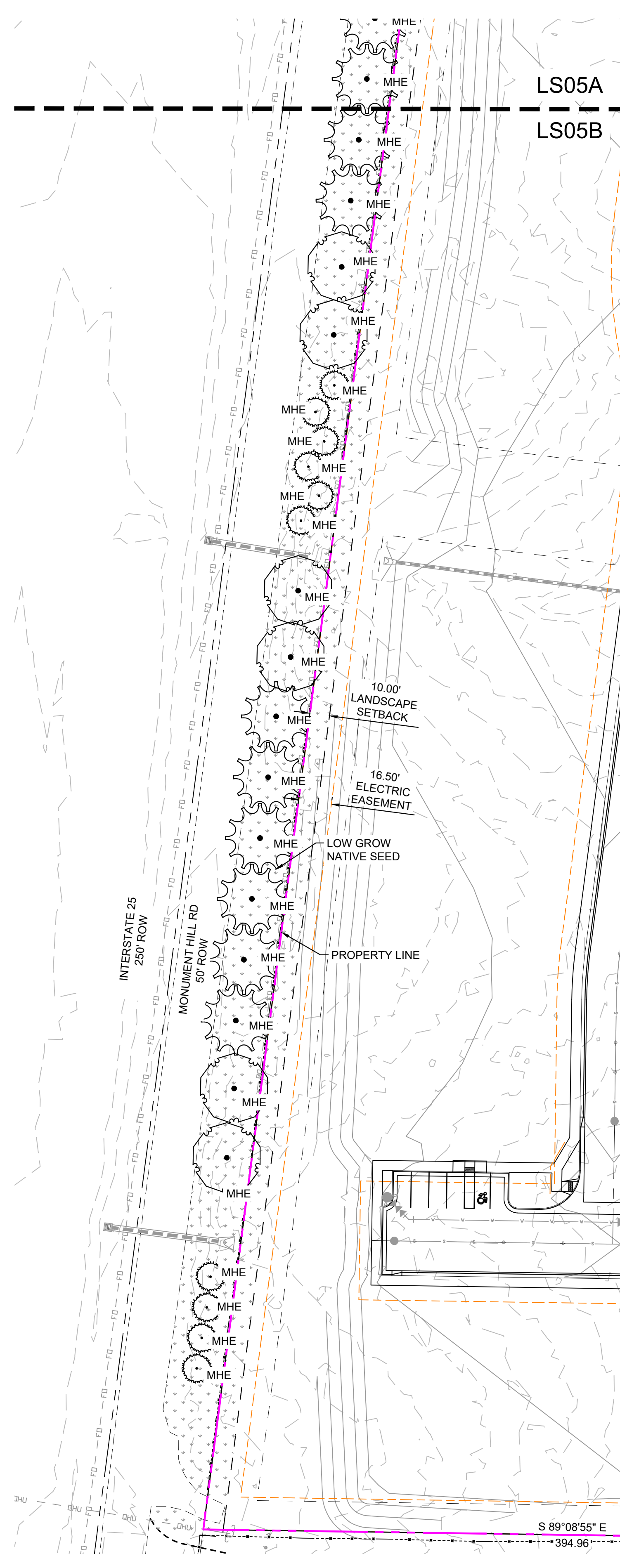
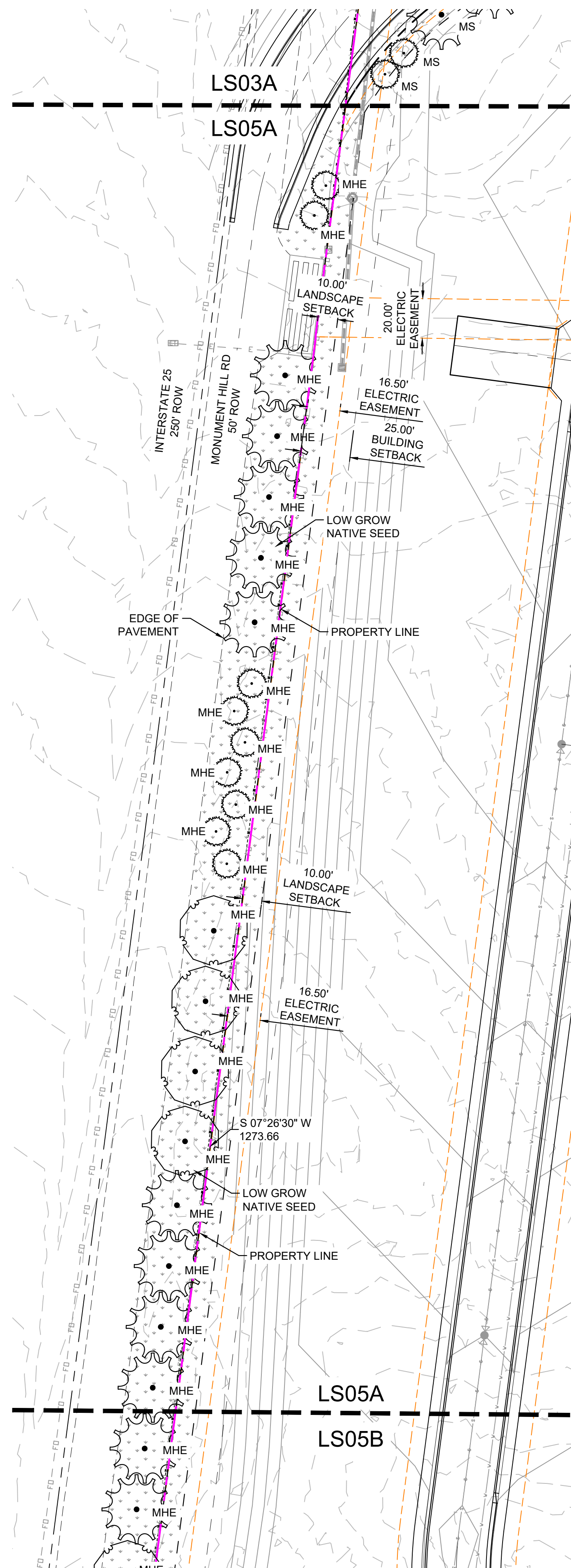
DRAWING INFORMATION:
PROJECT NO: 24.1669.001
DRAWN BY: AV
CHECKED BY: AP
APPROVED BY: AP
SHEET TITLE:

**PRELIMINARY
LANDSCAPE PLAN**

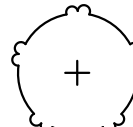

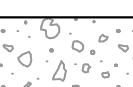

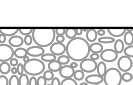
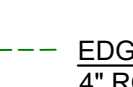
LS04

SHEET 7 OF 8

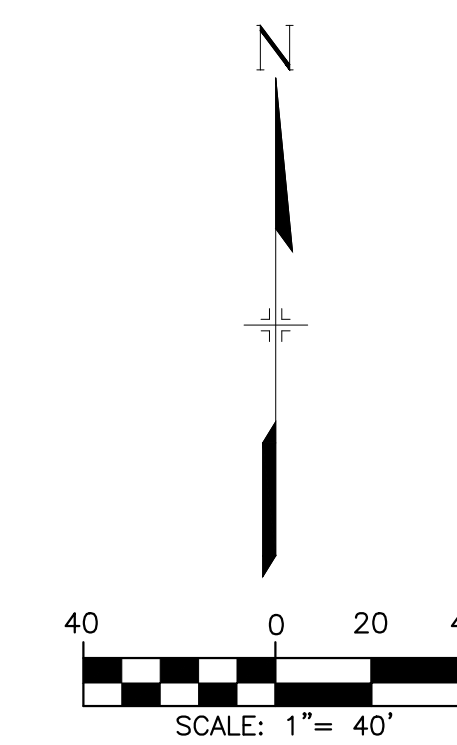
FILE LOCATION: S:\24-1669-001 MONUMENT RIDGE EAST\1500 CAD\1504 PLAN SET\DEVELOPMENT PLAN\LS05.DWG



LEGEND

-  EXISTING TREE TO REMAIN
-  3/4" ROCK
-  1 1/2" ROCK
-  NATIVE SEED-LOW
-  2-4" COBBLE
-  EDGING
4" ROLLED TOP STEEL EDGING
(OR APPROVED EQUAL)

2024-08-23 10:36

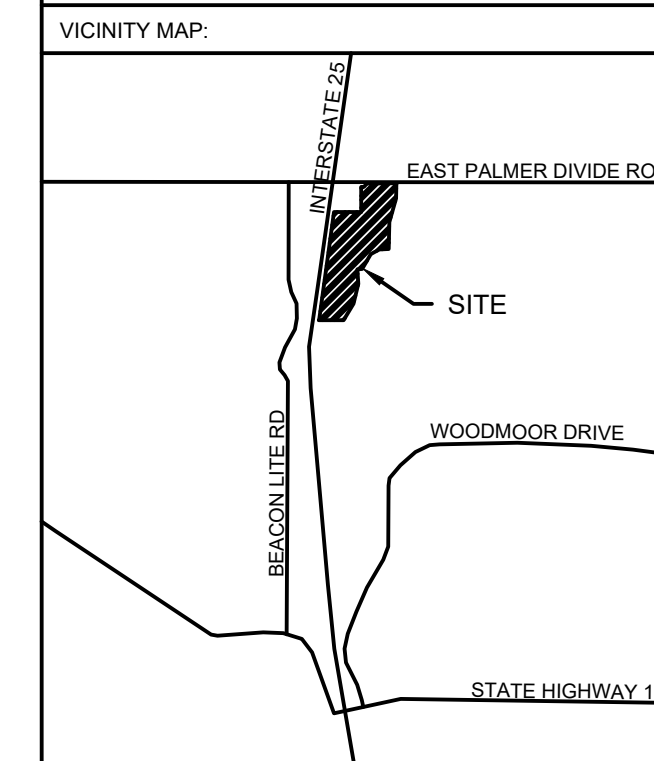


CONSULTANTS:
 PLANNER/ LANDSCAPE ARCHITECT/ CIVIL ENGINEER:

 2435 RESEARCH PARKWAY, SUITE 300
 COLORADO SPRINGS, CO 80920
 PHONE: (719) 575-0100
 FAX: (719) 575-0208

OWNER/DEVELOPER:
MONUMENT RIDGE EAST, LLC
 5055 LIST DRIVE
 COLORADO SPRINGS, CO 80919

APPROVAL:



PROJECT:
**MONUMENT RIDGE EAST
 PRELIMINARY LANDSCAPE PLAN**

EL PASO COUNTY, CO
 AUGUST 27, 2024

REVISION HISTORY:

NO.	DATE	DESCRIPTION	BY

DRAWING INFORMATION:
 PROJECT NO: 24-1669-001
 DRAWN BY: AV
 CHECKED BY: AP
 APPROVED BY: AP
 SHEET TITLE:

**PRELIMINARY
 LANDSCAPE PLAN**

LS05

SHEET 8 OF 8