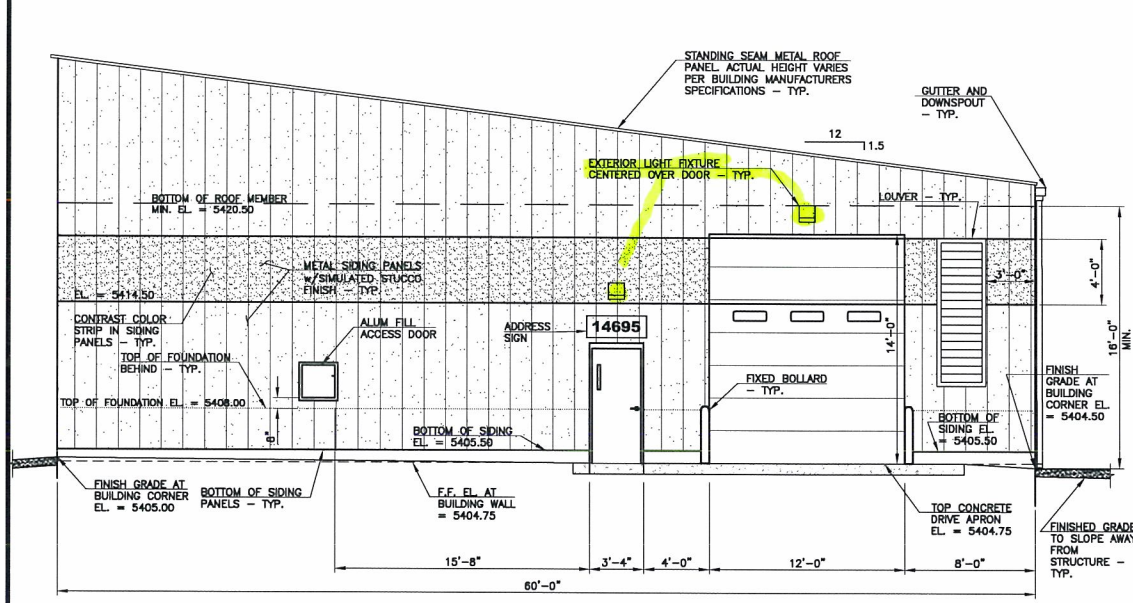
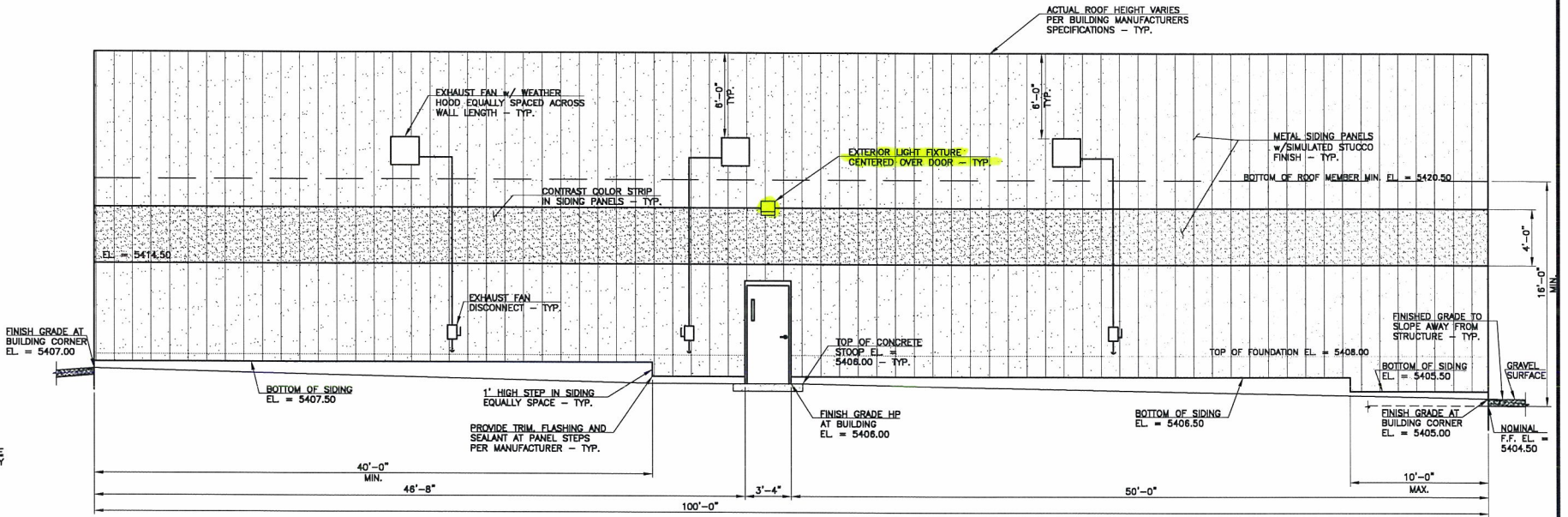


G:\LFMSDD\1605201\100516052005.dwg, Phosphorus Building Architectural Elevations and Lighting Plan, 10/4/2017 9:30:15 AM, sc, \GMS\02\WorkCentre 7345 PS, 1:2:2



SOUTH ELEVATION
SCALE 3/16" = 1'-0"



WEST ELEVATION
SCALE 3/16" = 1'-0"

THIS DRAWING IS THE PROPERTY OF GMS, INC., AND IS NOT TO BE REPRODUCED, MODIFIED OR USED FOR ANY OTHER PROJECT OR EXTENSION OF THIS PROJECT EXCEPT BY AGREEMENT WITH THIS COMPANY.

© 2017 GMS, INC.

PHOSPHORUS BUILDING
ARCHITECTURAL ELEVATIONS AND LIGHTING PLAN
SITE DEVELOPMENT AMENDMENT FOR THE
HAROLD D. THOMPSON REGIONAL WATER RECLAMATION FACILITY
LOWER FOUNTAIN METROPOLITAN SEWAGE DISPOSAL DISTRICT

DRAWN SKC
DESIGNED DRF
CHECKED MAM
DATE SEPTEMBER 2017
PROJECT NO. 16052.011
GMS FILE NO. 2830

GMS, INC.
CONSULTING ENGINEERS
611 N. WEBER, SUITE 300
COLORADO SPRINGS, COLORADO 80903

SHEET
5
OF
10

XREF FILENAME: G:\
BASE DWG: G:\
PLOT STYLE: FILE:16052.dwg
FILENAME: G:\LFMSDD\1605201\100516052005.dwg