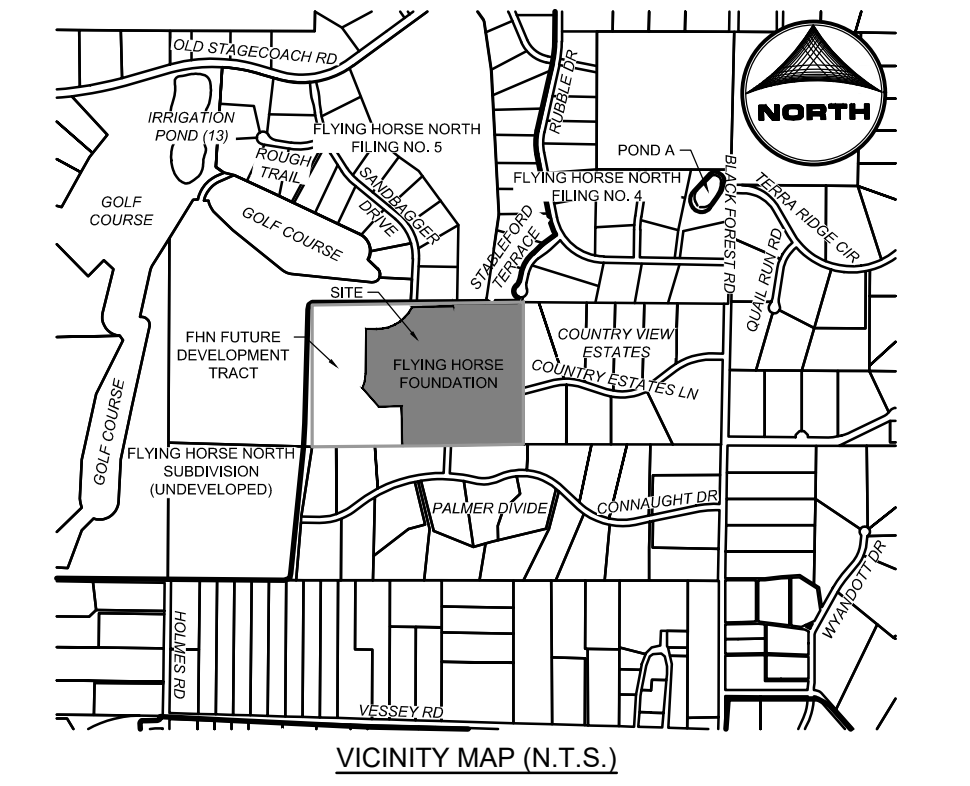
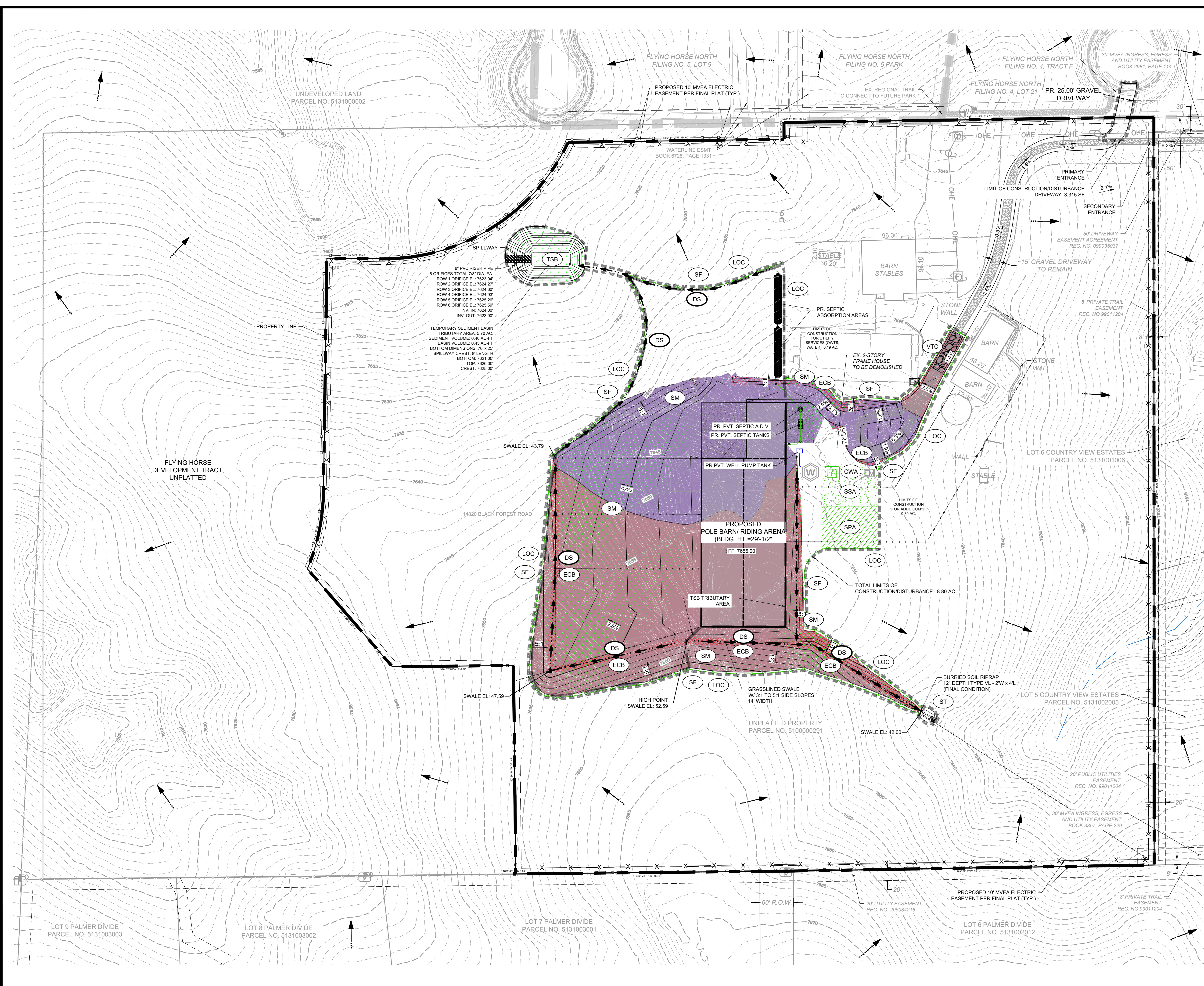




HR GREEN - COLORADO SPRINGS 1975 RESEARCH PARKWAY SUITE 160 COLORADO SPRINGS, CO 80920 PHONE: 719.300.4140 FAX: 713.965.0044



**GEC LEGEND:**

LOC	LIMITS OF CONSTRUCTION / LIMITS OF DISTURBANCE	PHASE:	INITIAL/INTERIM/FINAL
SF	SILT FENCE		INITIAL/INTERIM
SSA	STABILIZED STAGING AREA		INITIAL/INTERIM
CWA	CONCRETE WASH OUT		INITIAL
VTC	VEHICLE TRACKING CONTROL		INITIAL
DS	DRAINAGE SWALE		INTERIM
ECB	EROSION CONTROL BLANKET		INTERIM/FINAL
SM	SEEDING & MULCHING		FINAL
TRM	TURF REINFORCED MAT		FINAL
ST	SEDIMENT TRAP		INITIAL
TSB	TEMPORARY SEDIMENT BASIN		INITIAL
TSB	TSB TRIBUTARY AREA		INITIAL
	CUT CONDITION (161,535 SQFT)		
	FILL CONDITION (102,026 SQFT)		
2.0%	SLOPE		

- GRADING & EROSION CONTROL PLAN NOTES:**
- SEE UDFCD USDCM VOLUME 3 FOR FULL CONSTRUCTION BMP FACTSHEETS. DETAILS PROVIDED ON SHEETS 3 THROUGH 7.
  - ALL STORMWATER MANAGEMENT MEASURES SHOWN ON THIS PLAN MUST BE INSTALLED AND MAINTAINED PER THE EL PASO COUNTY DRAINAGE CRITERIA MANUAL AND THE EL PASO COUNTY ENGINEERING CRITERIA MANUAL; LATEST REVISIONS.
  - AREA WITHIN LIMITS OF DISTURBANCE TO BE CLEARED, GRUBBED AND STOCKPILED PRIOR TO IMPORT OF ANY FILL.
  - ALL GREATER THAN 4:1 SLOPES MUST BE RECEIVE SLOPE TRACKING TREATMENT AND EROSION CONTROL BLANKET.
  - STOCKPILES REQUIRED DURING ONSITE CONSTRUCTION ACTIVITIES WILL BE PLACED AT THE DISCRETION OF THE CONTRACTOR. STOCKPILING OF MATERIAL MUST NOT OCCUR OUTSIDE THE LIMITS OF DISTURBANCE SHOWN ON THIS PLAN.
  - NON-STRUCTURAL CONTROLS (I.E. STREET SWEEPING) WILL BE AT THE DISCRETION OF THE PROJECT'S CERTIFIED GEC ADMINISTRATOR THROUGHOUT THE DURATION OF LAND DISTURBING ACTIVITIES.
  - THERE ARE NO ANTICIPATED ASPHALT AND/OR CONCRETE BATCH PLANTS, OR MASONRY MIX STATIONS ASSOCIATED WITH THIS PROJECT. IF THE CONTRACTOR REQUIRES AN ASPHALT/CONCRETE BATCH PLANTS OR MASONRY MIX STATIONS, THESE PLANS WILL BE AMENDED AS REQUIRED.
  - THERE ARE NO EXISTING PRESERVATION EASEMENTS LOCATED ON SITE.
  - ONSITE EXISTING VEGETATION IS NATIVE GRASSES AND WEEDS AS WELL AS PLANTED TREES.
  - THE LIMITS OF CONSTRUCTION (LOC) AND LIMITS OF DISTURBANCE (LOD) ARE CONSIDERED THE SAME AREA FOR THIS DEVELOPMENT.

**PROJECT INFO:**

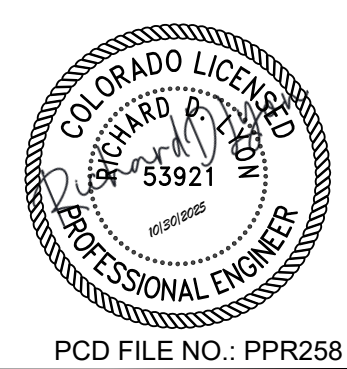
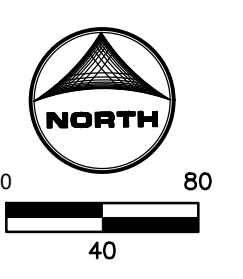
**EARTHWORK VOLUME:**

BASE SURFACE: EXISTING-FOUNDATION  
COMPARISON SURFACE: PROPOSED-FOUNDATION

CUT FACTOR: 1.00  
FILL FACTOR: 1.15  
CUT VOLUME(ADJUSTED): 20,068.57 CUBIC YARDS  
FILL VOLUME(ADJUSTED): 16,081.76 CUBIC YARDS  
NET VOLUME(ADJUSTED): 3,986.81 (CUT) CUBIC YARDS

CUT FACTOR: 1.00  
FILL FACTOR: 1.00  
CUT VOLUME(UNADJUSTED): 20,068.57 CUBIC YARDS  
FILL VOLUME(UNADJUSTED): 13984.14 CUBIC YARDS  
NET VOLUME(UNADJUSTED): 6,084.43 (CUT) CUBIC YARDS

LOC - LIMITS OF CONSTRUCTION/DISTURBANCE = 8.80 AC



DRAWN BY: CMD	JOB DATE: 10/30/2025	BAR IS ONE INCH ON OFFICIAL DRAWINGS.
APPROVED: RDL	JOB NUMBER: 2502010	0" = 1"
CAD DATE: 1/23/2025		IF NOT ONE INCH, ADJUST SCALE ACCORDINGLY.
CAD FILE: J:\2025\2502010\CADIDwgs\GEC\GEC		

NO.	DATE	BY	REVISION DESCRIPTION

**HRGreen** HR GREEN - COLORADO SPRINGS  
1975 RESEARCH PARKWAY SUITE 160  
COLORADO SPRINGS, CO 80920  
PHONE: 719.300.4140 FAX: 713.965.0044

**FLYING HORSE FOUNDATION**  
**JEFFREY B. SMITH**  
EL PASO COUNTY, COLORADO

**GRADING & EROSION CONTROL PLAN**  
INITIAL, INTERIM, & FINAL GEC

**SHEET GEC 2**









